



USAID
FROM THE AMERICAN PEOPLE



**Turkish State
Meteorological Service**

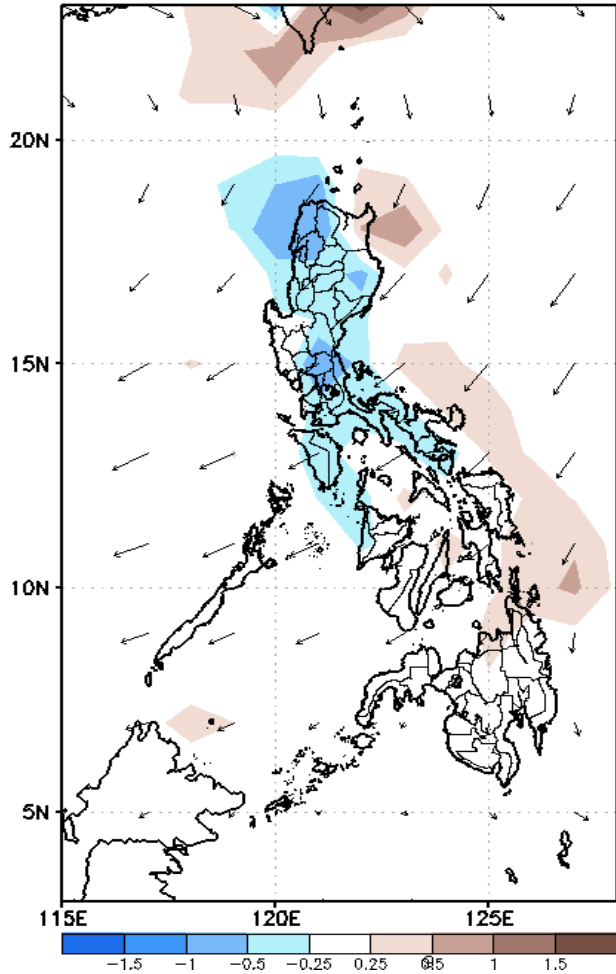
Week 1 & Week 2 Forecast for the Philippines using GEFS Model



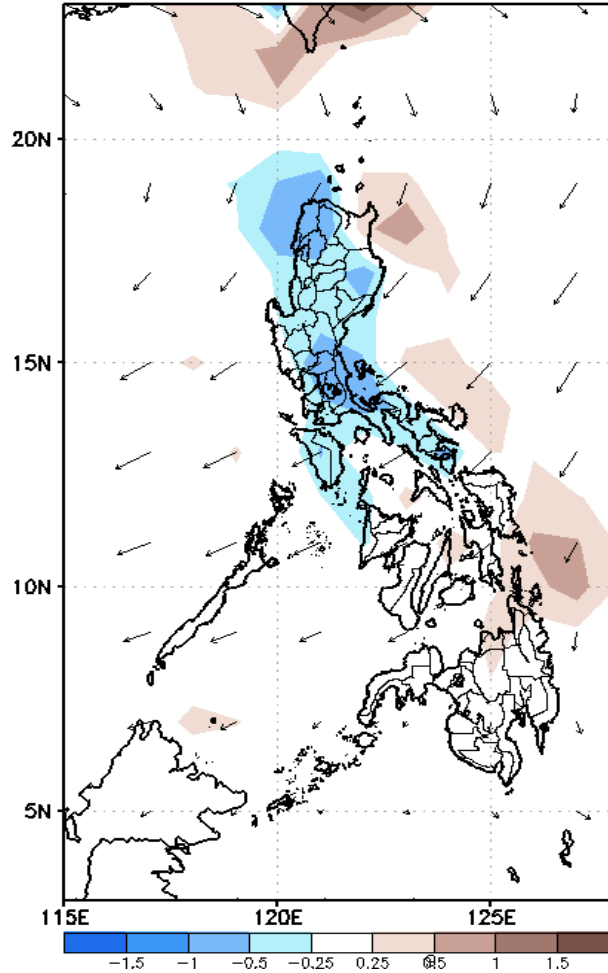
GEFS Week-1 Forecasts: Divergence & Wind

Week 1: Nov 27-Dec 03, 2019

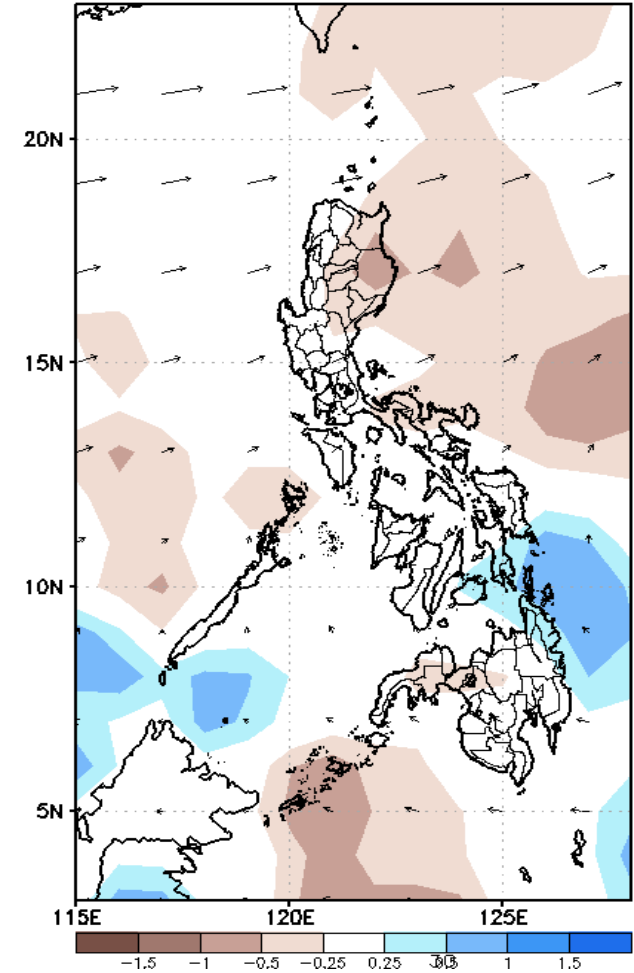
GEFS Week-1 850-hPa Divergence and Wind
Valid: 20191127 - 20191203



GEFS Week-1 700-hPa Divergence and Wind
Valid: 20191127 - 20191203



GEFS Week-1 200-hPa Divergence and Wind
Valid: 20191127 - 20191203

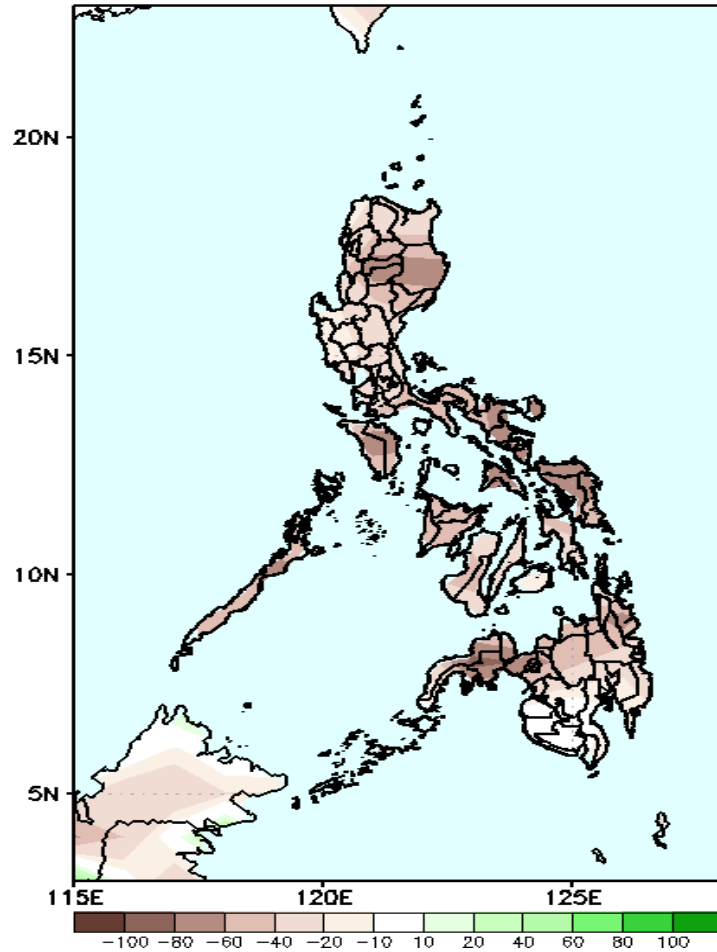


Low level (850 hPa) Divergence (Brown shaded color) suggest likelihood of heavy precipitation in northwestern and southern Luzon during the forecast period. Northwesterly wind affecting most part of the country.

Precipitation Anomaly and Exceedance Probability > 25/50 mm

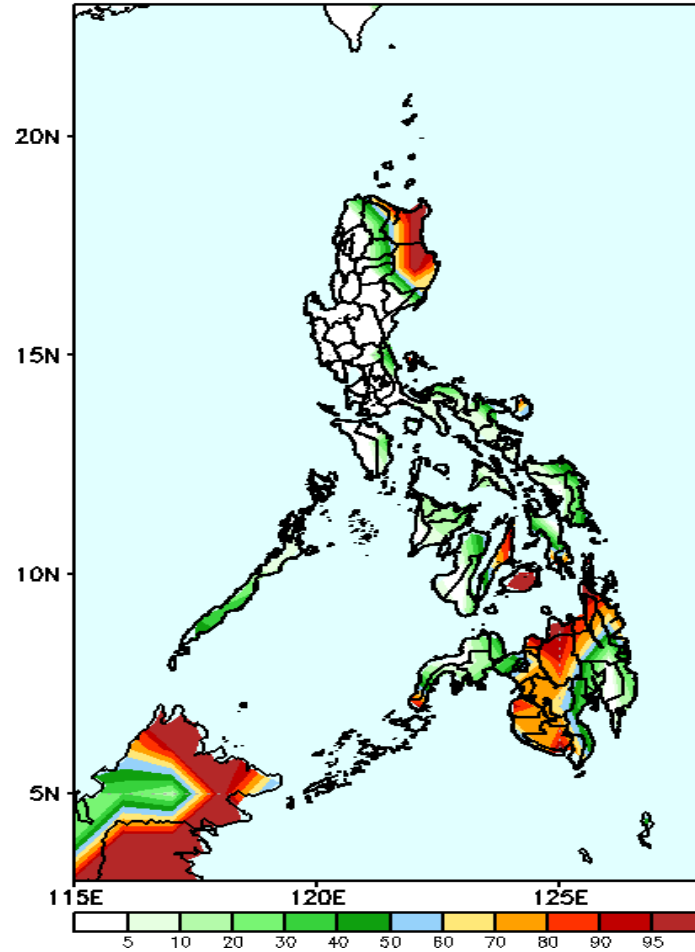
Week 1: Nov 27-Dec 03, 2019

GEFS Week-1 Precip Anomaly
Valid: 20191127 - 20191203



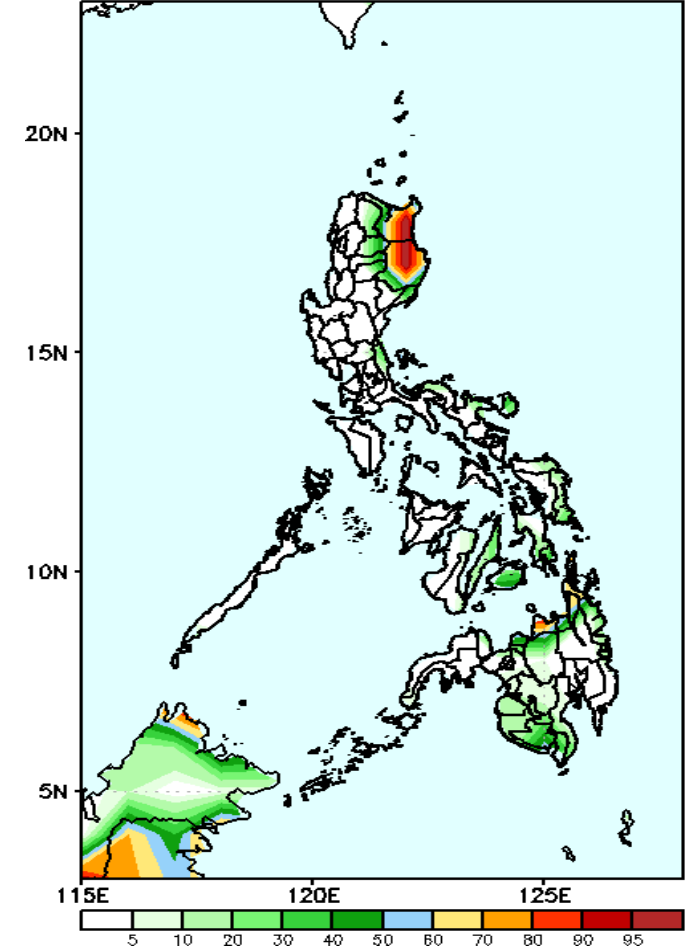
Most parts of the country will likely to have rainfall deficit of up to 100 mm.

GEFS Week-1 Exceedance Prob. > 25mm
Valid: 20191127 - 20191203



High probabilities for rainfall exceeding 25mm in northeastern Luzon, Bicol Region, eastern parts Reg 6 & 7, Palawan and western Mindanao.

GEFS Week-1 Exceedance Prob. > 50mm
Valid: 20191127 - 20191203

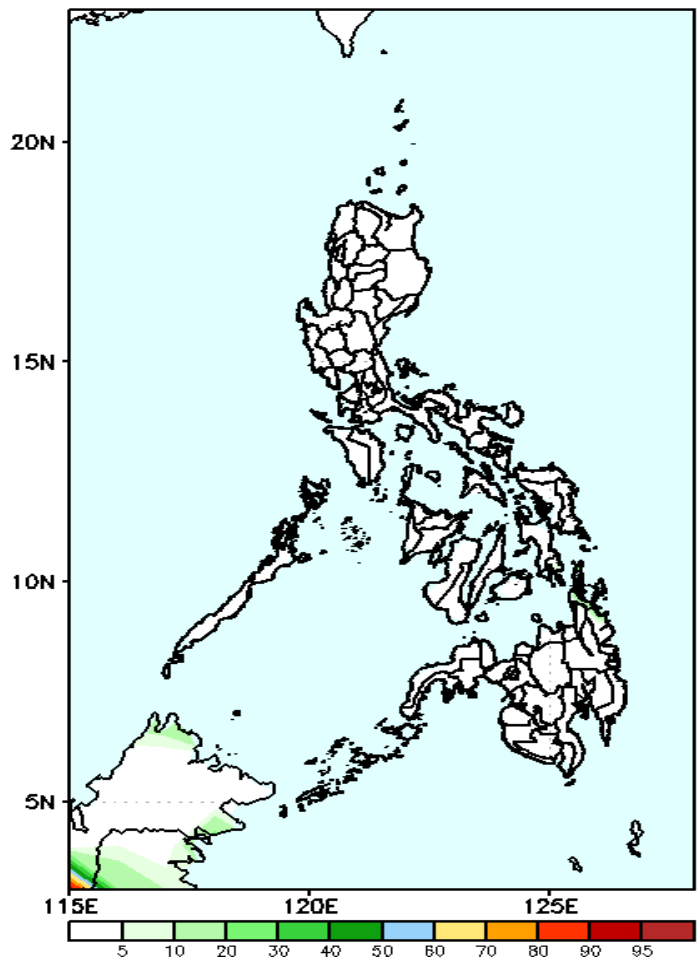


High probabilities for rainfall exceeding 50mm in northeastern Luzon while less likely for the rest of the country during the forecast period.

Exceedance Probability > 100/150/200 mm

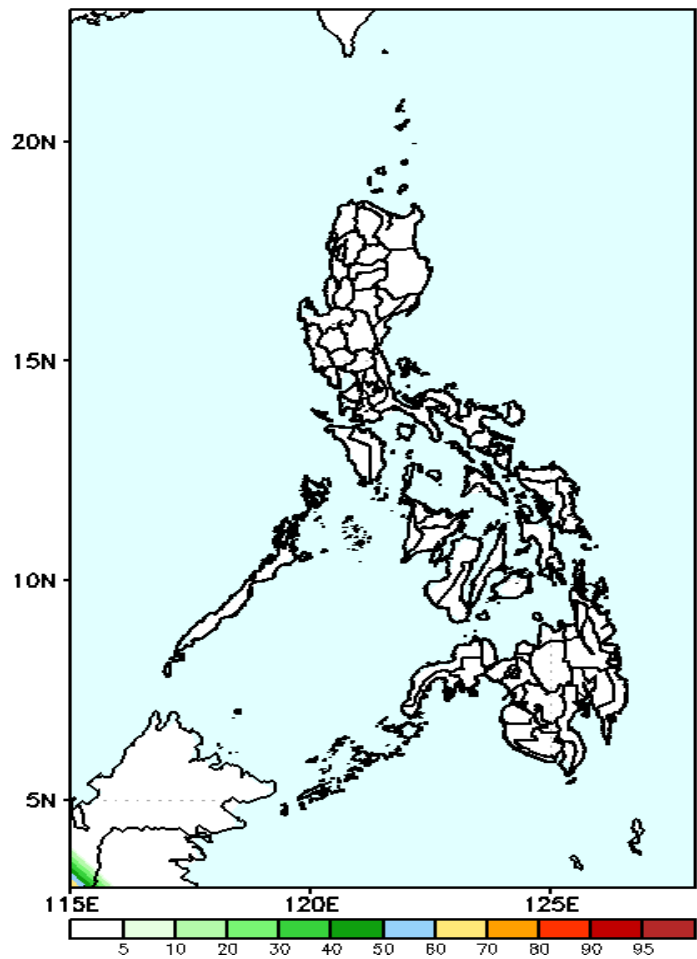
Week 1: Nov 27- Dec 03, 2019

GEFS Week-1 Exceedance Prob. > 100mm
Valid: 20191127 – 20191203



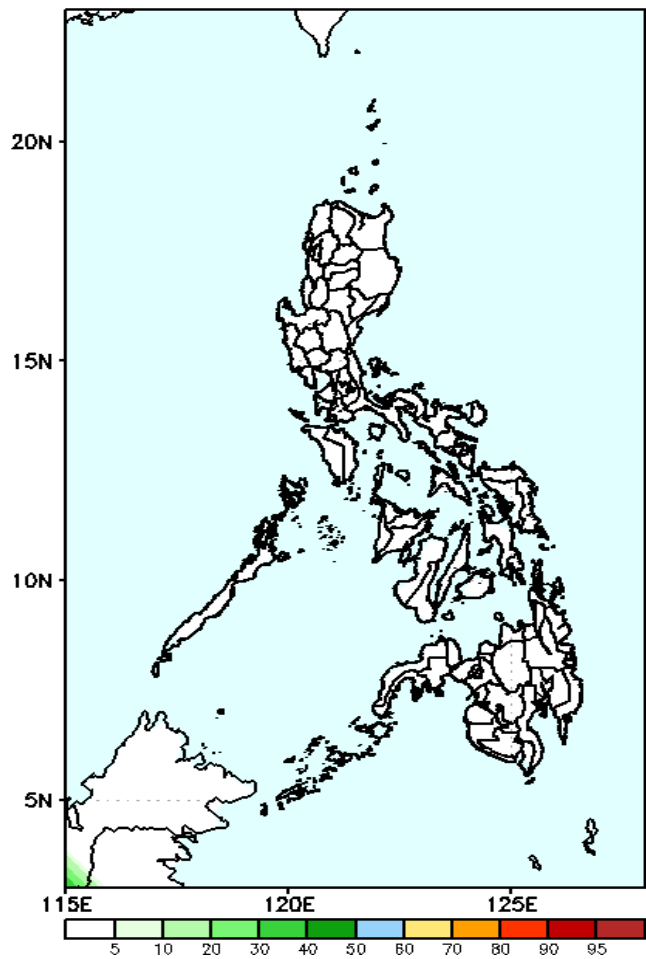
Less probabilities for rainfall exceeding 100mm in most parts of the country except in Cagayan province where 60-80% chance is expected.

GEFS Week-1 Exceedance Prob. > 150mm
Valid: 20191127 – 20191203



Less probability of rainfall to exceed 150mm in most parts of the country during the forecast period.

GEFS Week-1 Exceedance Prob. > 200mm
Valid: 20191127 – 20191203



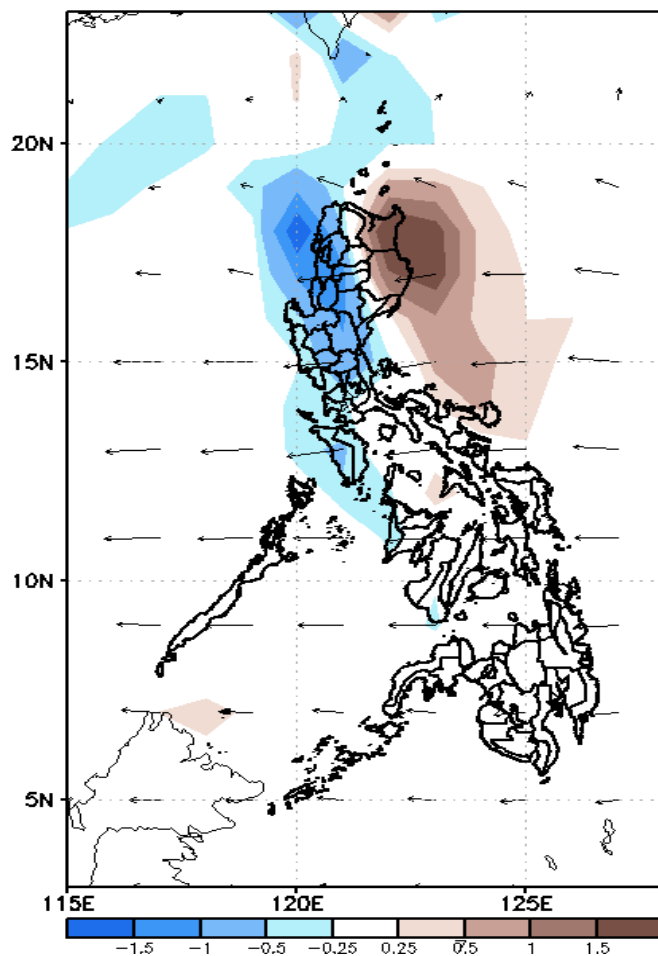
Less probability of rainfall to exceed 200 mm in most parts of the country during the forecast period.



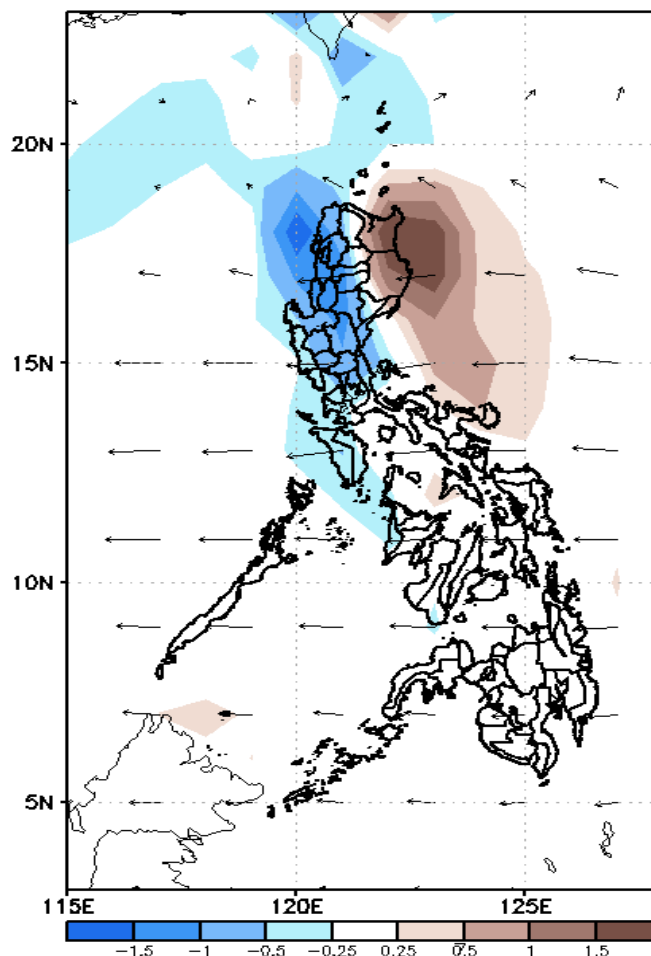
GEFS Week-2 Forecasts: Divergence & Wind

Week 2: Dec 04-Dec 10, 2019

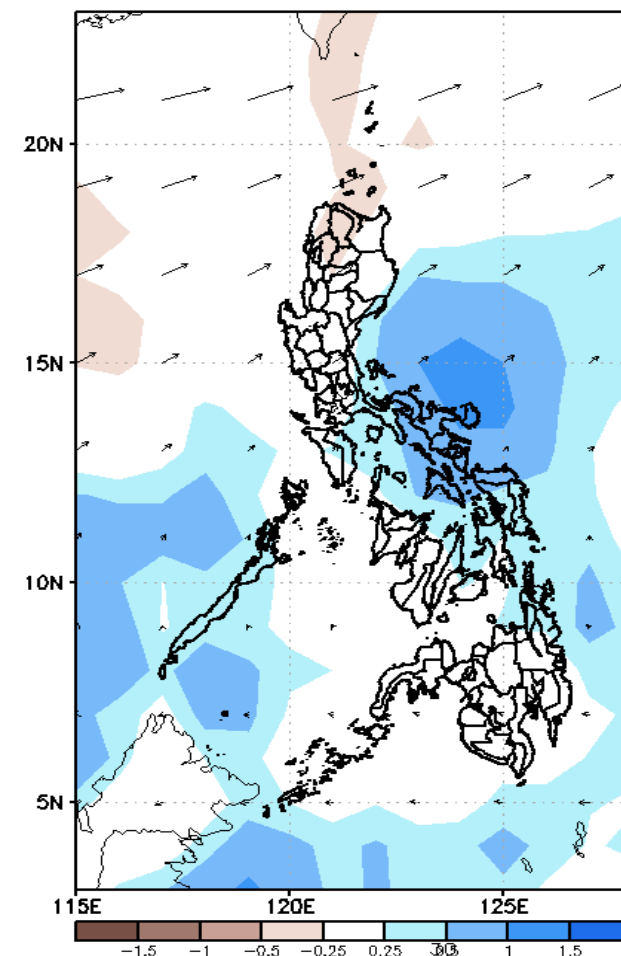
GEFS Week-2 850-hPa Divergence and Wind
Valid: 20191204 - 20191210



GEFS Week-2 700-hPa Divergence and Wind
Valid: 20191204 - 20191210



GEFS week-2 200-hPa Divergence and Wind
Valid: 20191204 - 20191210

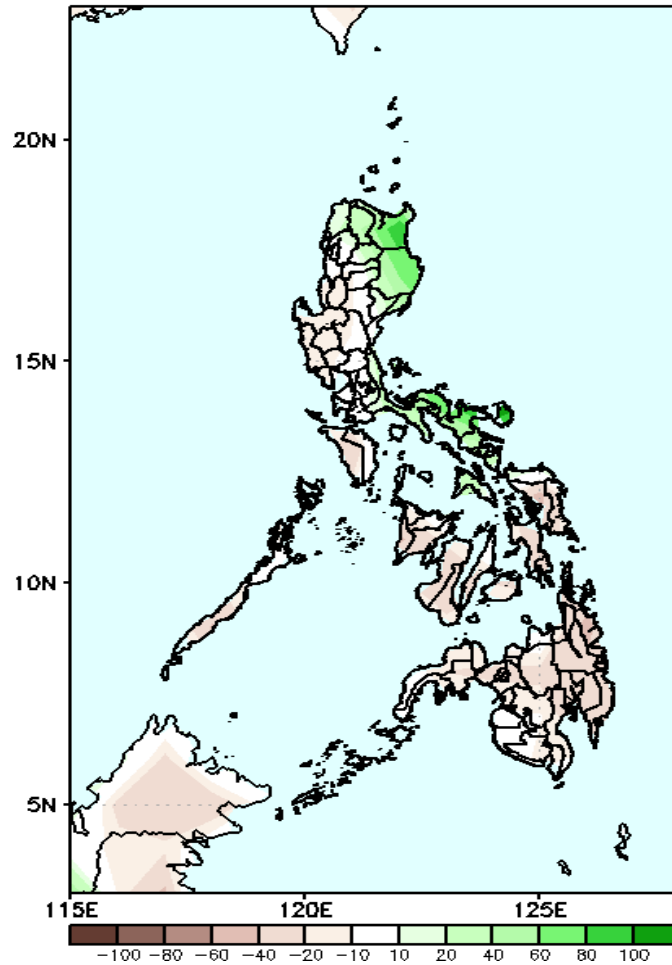


Low level (850 hPa) Divergence (Brown shaded color) suggest likelihood of heavy precipitation in northwestern Luzon and eastern Visayas. Moreover a cyclonic wind pattern is affecting most parts Visayas during the forecast period.

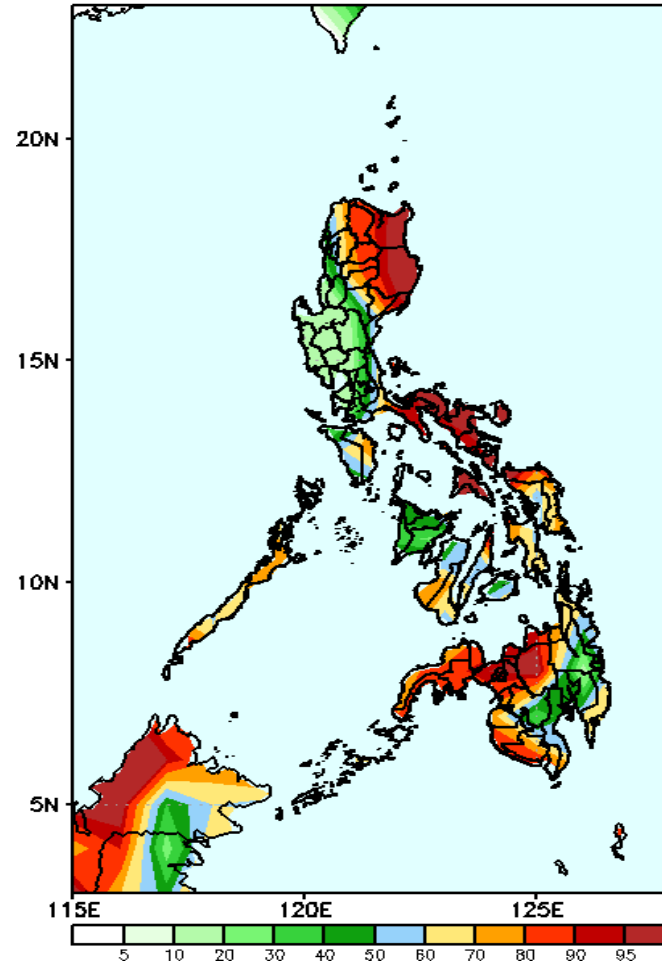
Precipitation Anomaly and Exceedance Probability > 25/50 mm

Week 2: Dec 04-Dec 10, 2019

GEFS Week-2 Precip Anomaly
Valid: 20191204 - 20191210

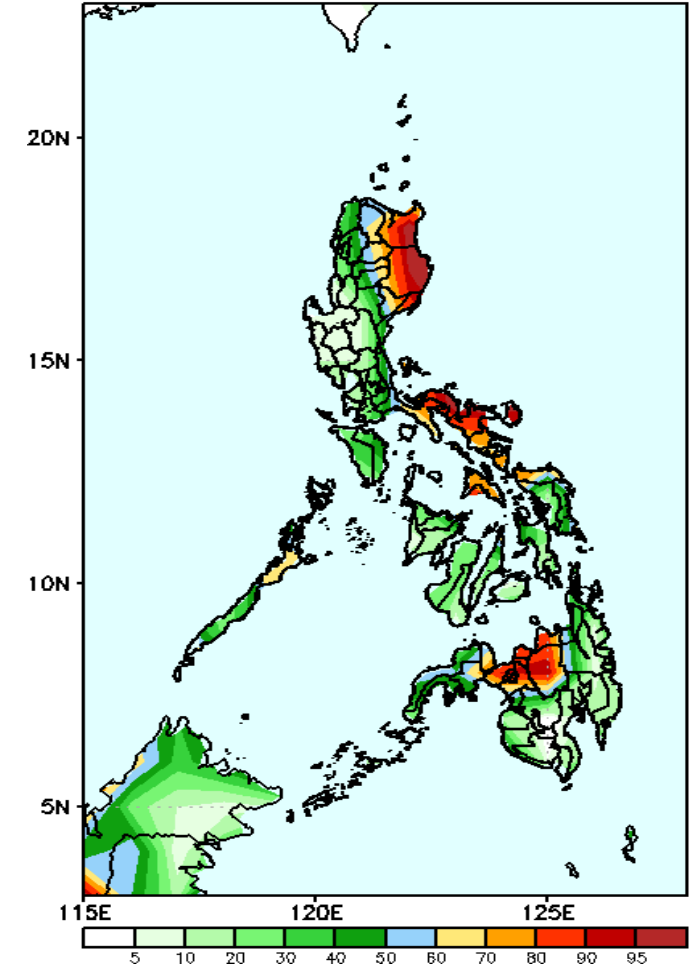


GEFS Week-2 Exceedance Prob. > 25mm
Valid: 20191204 - 20191210



50-95% probabilities for rainfall exceeding 25mm in Region 2 and eastern Visayas while less likely for the rest of the country.

GEFS Week-2 Exceedance Prob. > 50mm
Valid: 20191204 - 20191210

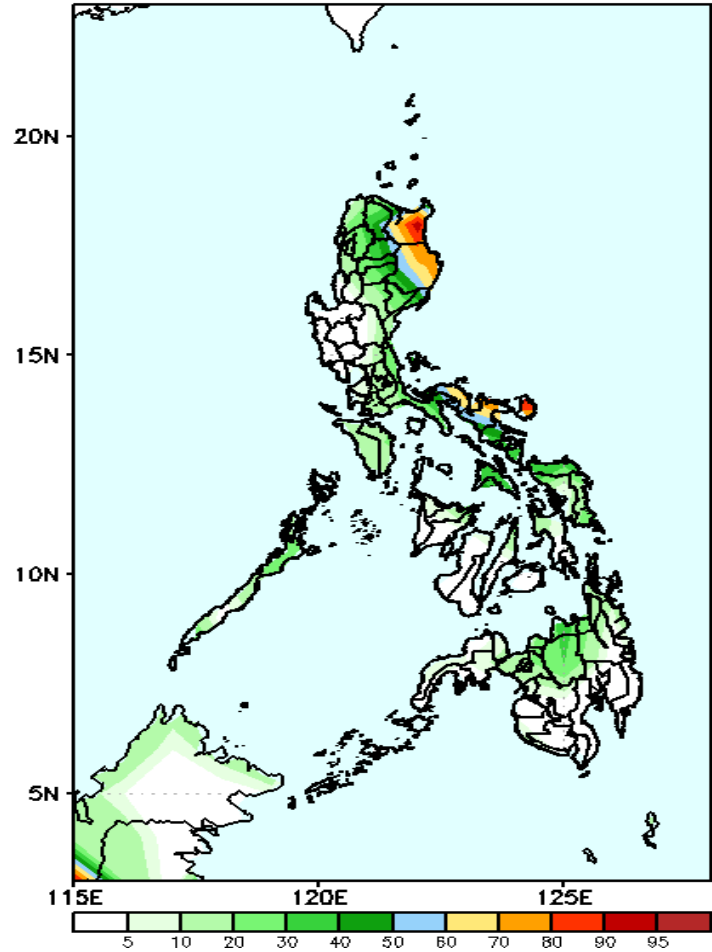


50-80% probabilities for rainfall exceeding 50mm in Cagayan and up to 60% for the rest of the country.

Exceedance Probability > 100/150/200 mm

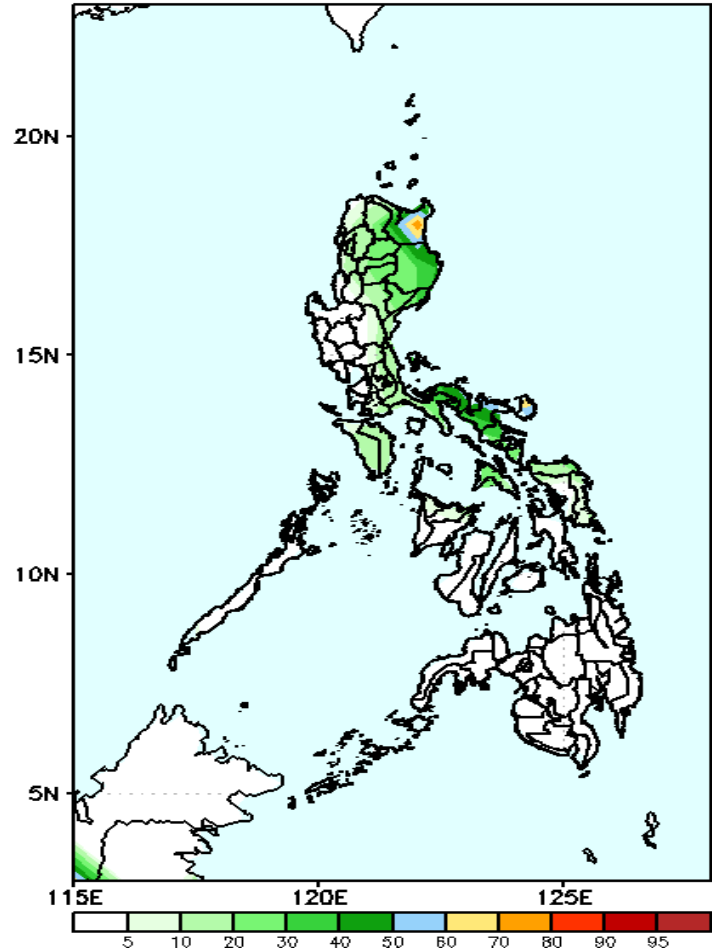
Week 2: Dec 04-Dec 10, 2019

GEFS Week-2 Exceedance Prob. > 100mm
Valid: 20191204 – 20191210



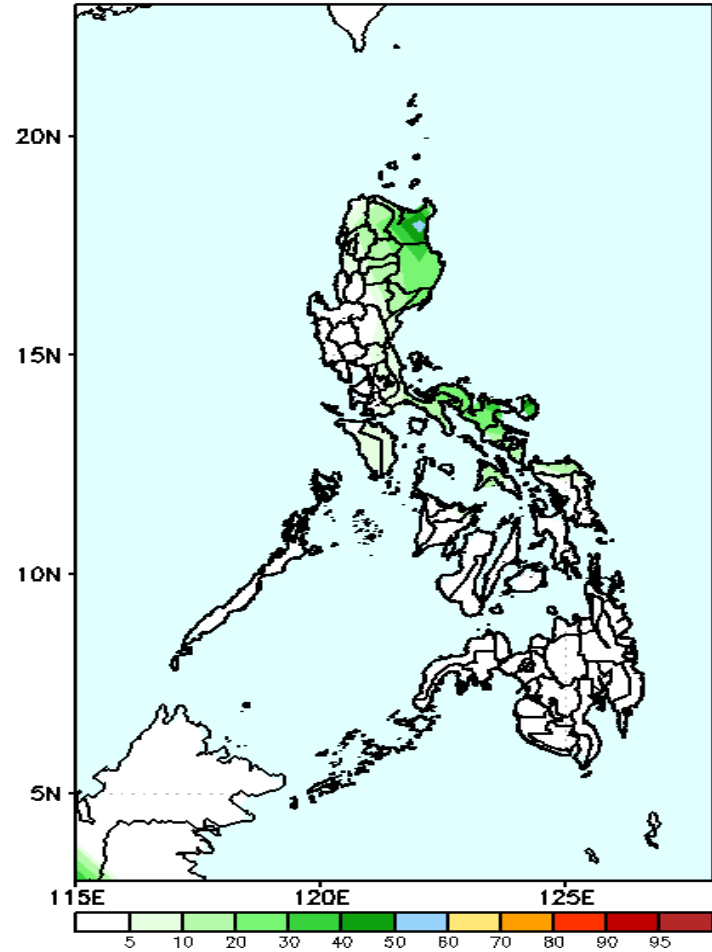
Less probability of rainfall to exceed 100mm in most parts of the country except in the northeastern parts of Luzon and eastern Visayas with 30-50% chance.

GEFS Week-2 Exceedance Prob. > 150mm
Valid: 20191204 – 20191210



Less probability of rainfall to exceed 150 mm in most parts of the country during the forecast period.

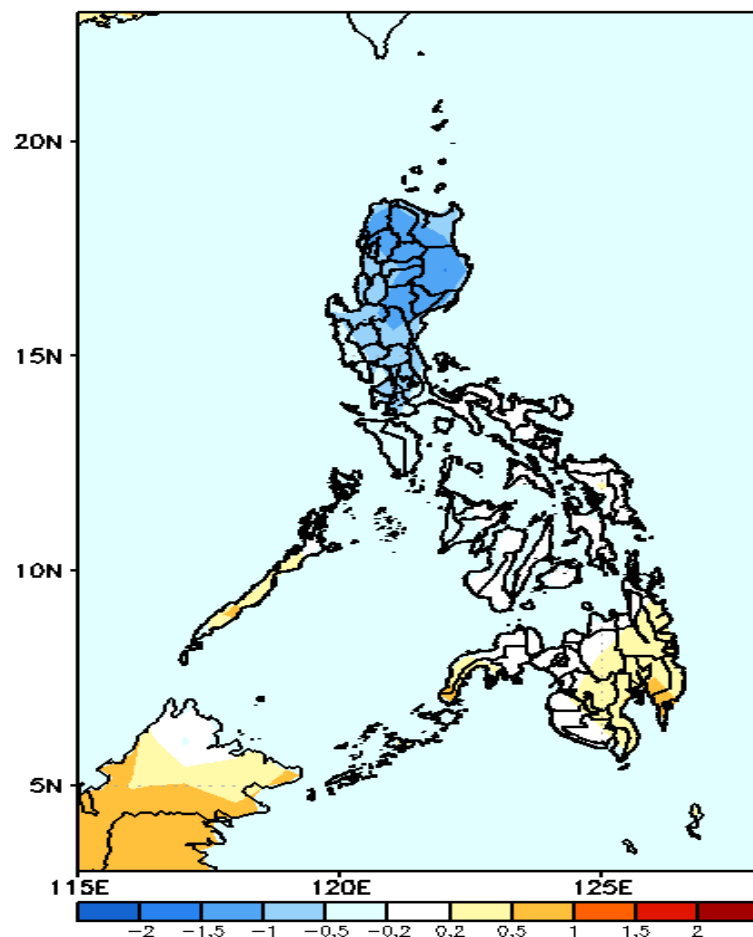
GEFS Week-2 Exceedance Prob. > 200mm
Valid: 20191204 – 20191210



Less probability of rainfall to exceed 200 mm in most parts of the country during the forecast period.

GEFS Week-1 & 2 Forecasts: T2m Anomaly

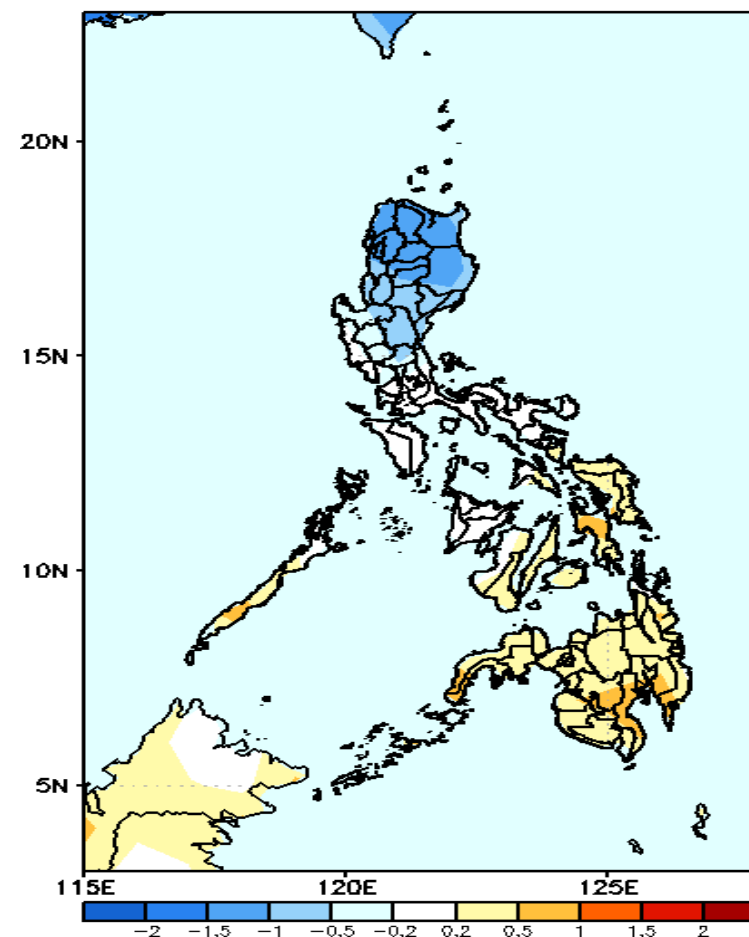
GEFS Week-1 T2m Anomaly
Valid: 20191127 - 20191203



2m Temperature Week1 (Nov 25-Dec 01, 2019)

Slightly warmer than average surface air temperature will likely experience in the eastern part of Visayas and Mindanao while slightly cooler than average temperature for Luzon.

GEFS Week-2 T2m Anomaly
Valid: 20191204 - 20191210



2m Temperature Week 2: Dec 02-Dec 08, 2019

Cooler to slightly cooler surface air temperature are expected in Luzon and Visayas while the rest of the country will likely experience average temperature.