



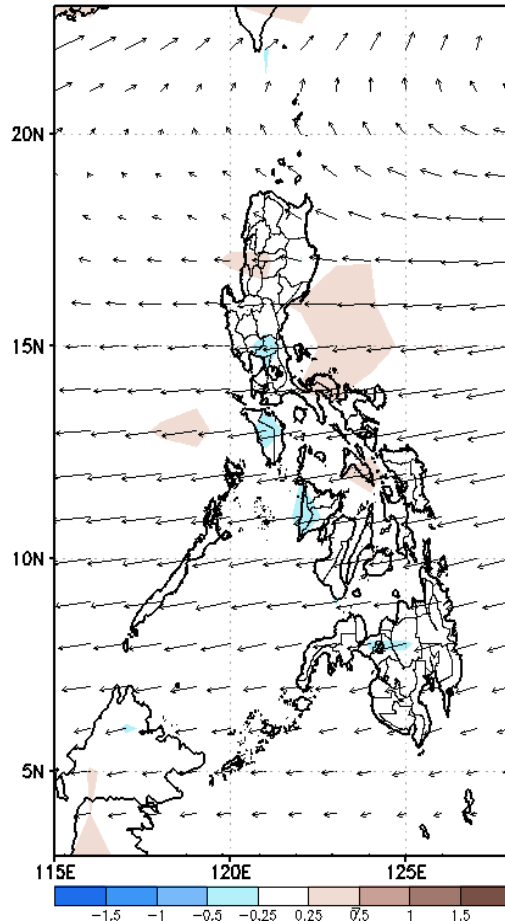
Week 1 & Week 2 Forecast for the Philippines using GEFS Model



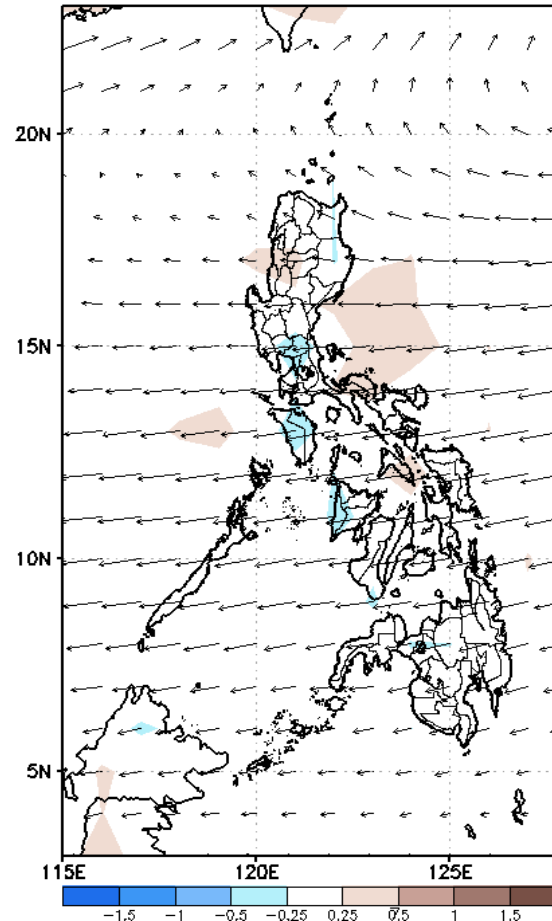
GEFS Week-1 Forecasts: Wind Anomaly Forecast

Week 1: Apr 28 – May 04, 2023

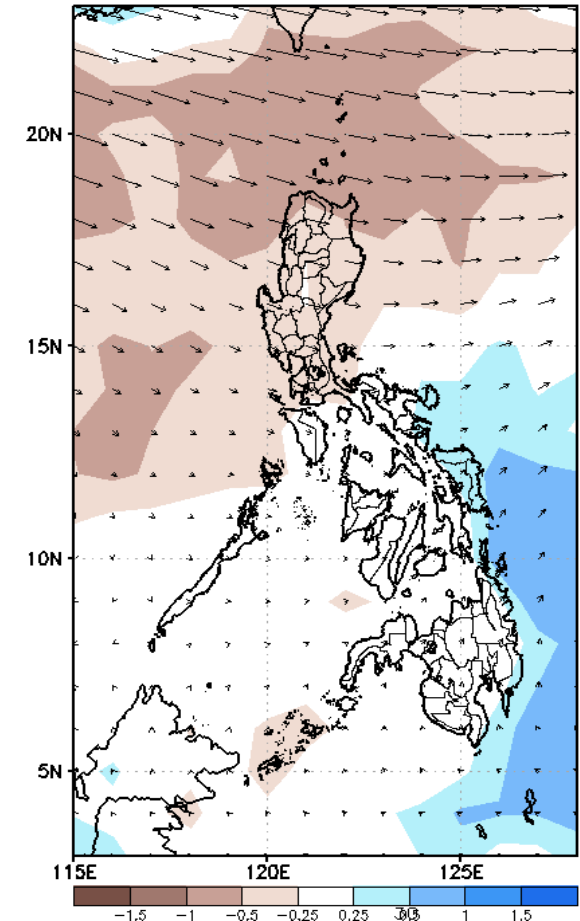
GEFS Week-1 850-hPa Divergence and Wind Anomaly
Valid: 20230428 – 20230504



GEFS Week-1 700-hPa Divergence and Wind Anomaly
Valid: 20230428 – 20230504

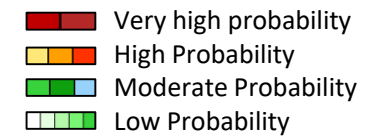


GEFS Week-1 200-hPa Divergence and Wind Anomaly
Valid: 20230428 – 20230504



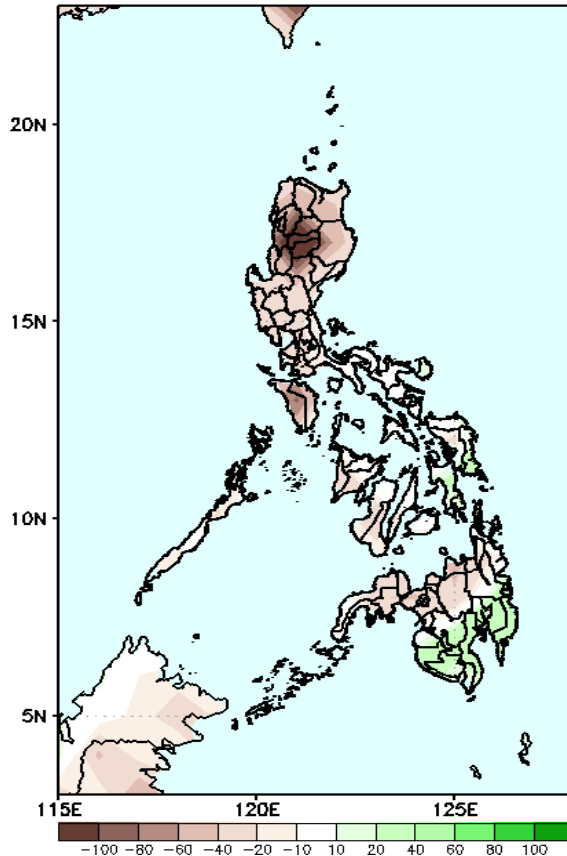
Easterlies is forecasted to affect most parts of the country; expect dry and hot weather during the forecast period.

Precipitation Anomaly and Exceedance Probability > 25/50 mm



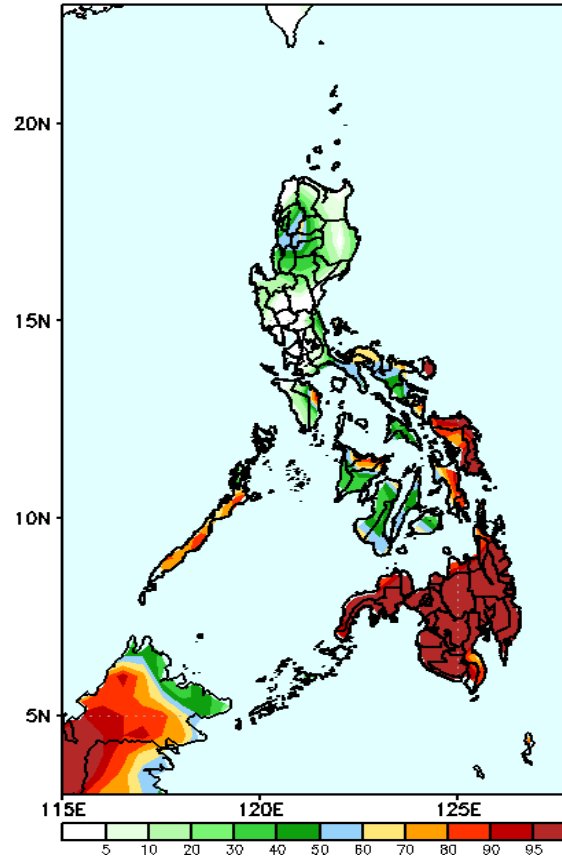
Week 1: Apr 28 – May 04, 2023

GEFS Week-1 Precip Anomaly
Valid: 20230428 – 20230504



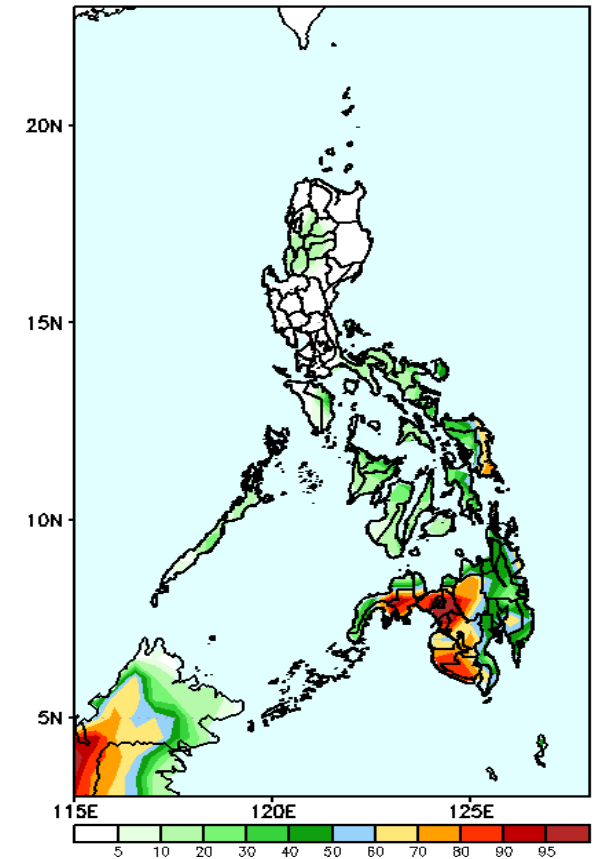
Rainfall deficit of more than 40-100mm is expected in most parts of the country except in SOCCSKARGEN and Davao region where an increase of 20-60mm is forecasted during the forecast period.

GEFS Week-1 Exceedance Prob. > 25mm
Valid: 20230428 – 20230504



High to a very high probability to exceed 25mm of rainfall in Mindanao, Palawan, and Eastern Visayas; moderate to high probability in the Bicol region, Benguet, Ilocos Sur, Abra, Mountain Province, Ifugao, Palawan, and the rest of Visayas while low likelihood over the rest of the country.

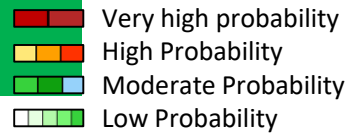
GEFS Week-1 Exceedance Prob. > 50mm
Valid: 20230428 – 20230504



Moderate to High probability to exceed 50mm of rainfall in Mindanao and Eastern Visayas while low likelihood over the rest of the country.

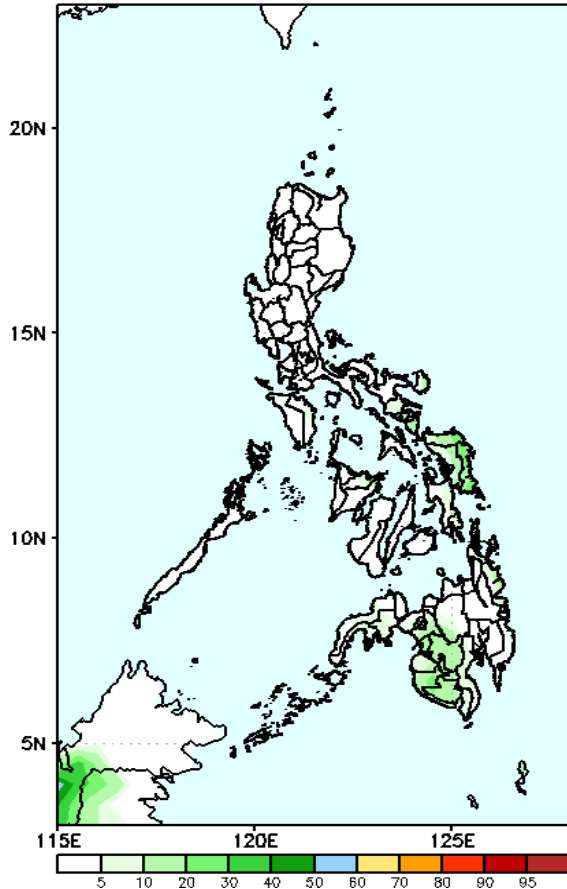


Exceedance Probability > 100/150/200 mm



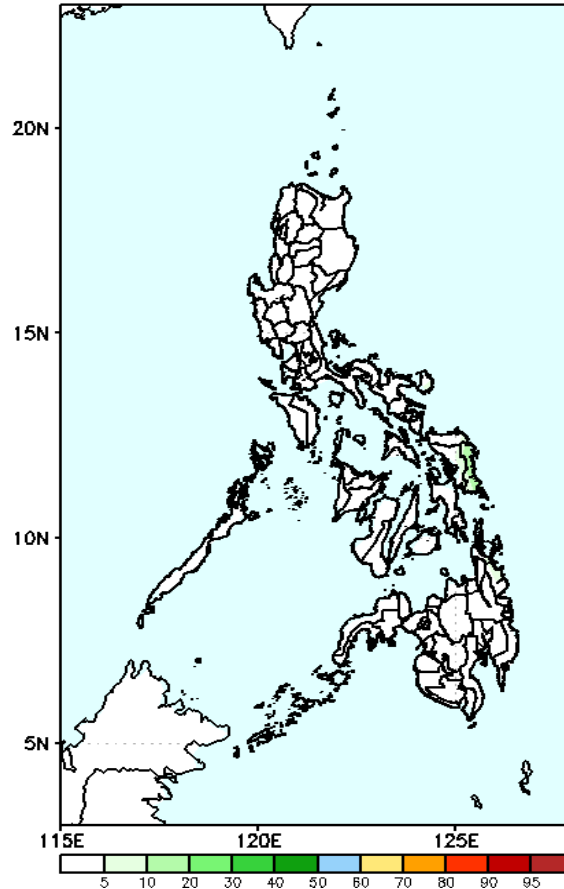
Week 1: Apr 28 – May 04, 2023

GEFS Week-1 Exceedance Prob. > 100mm
Valid: 20230428 – 20230504



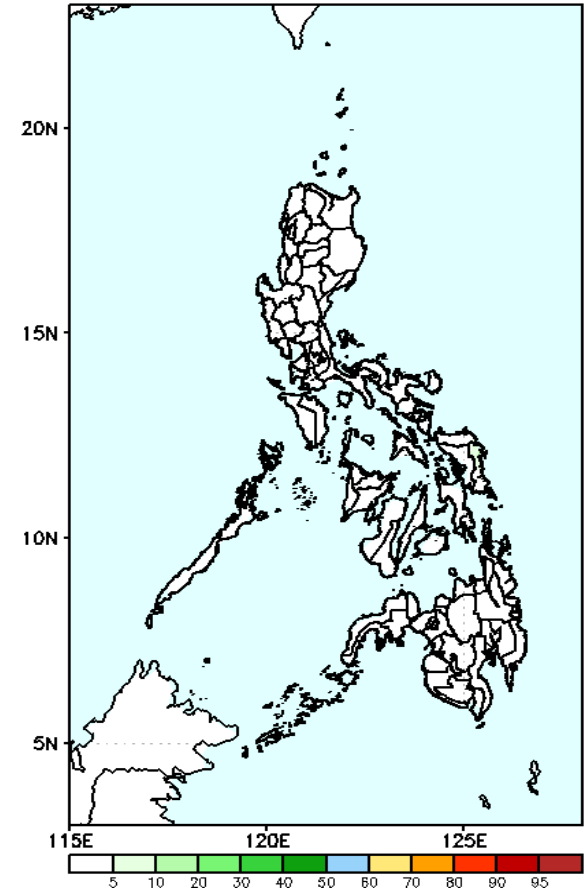
Low probability of rainfall to exceed 100mm in most parts of the country during the forecast period.

GEFS Week-1 Exceedance Prob. > 150mm
Valid: 20230428 – 20230504



Low probability of rainfall to exceed 150mm in most parts of the country during the forecast period.

GEFS Week-1 Exceedance Prob. > 200mm
Valid: 20230428 – 20230504

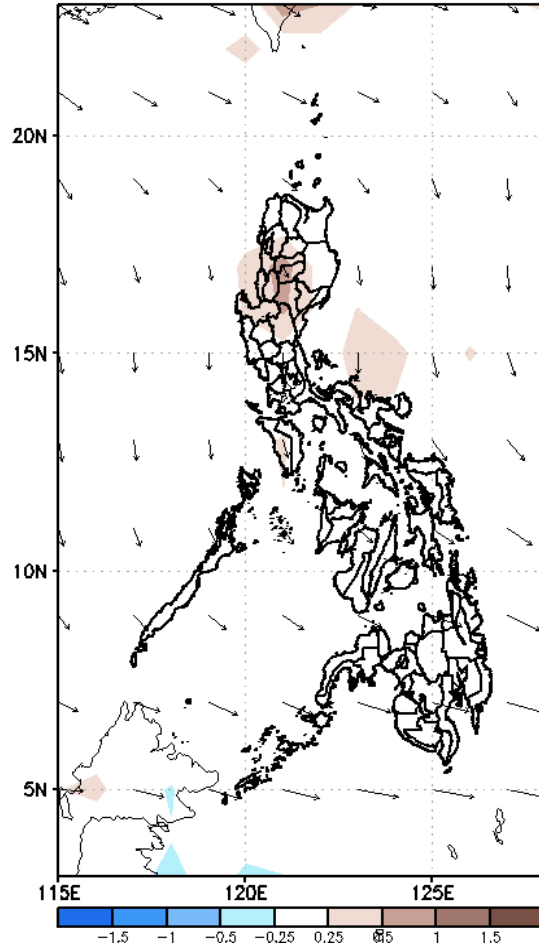


Low probability of rainfall to exceed 200mm in most parts of the country during the forecast period.

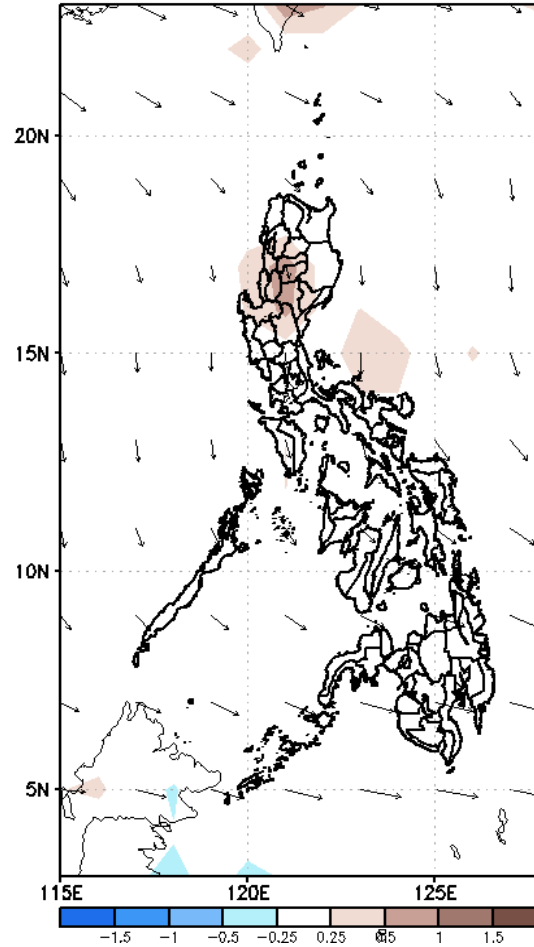
GEFS Week-2 Forecasts: Wind Anomaly Forecast

Week 2: May 05 - 11, 2023

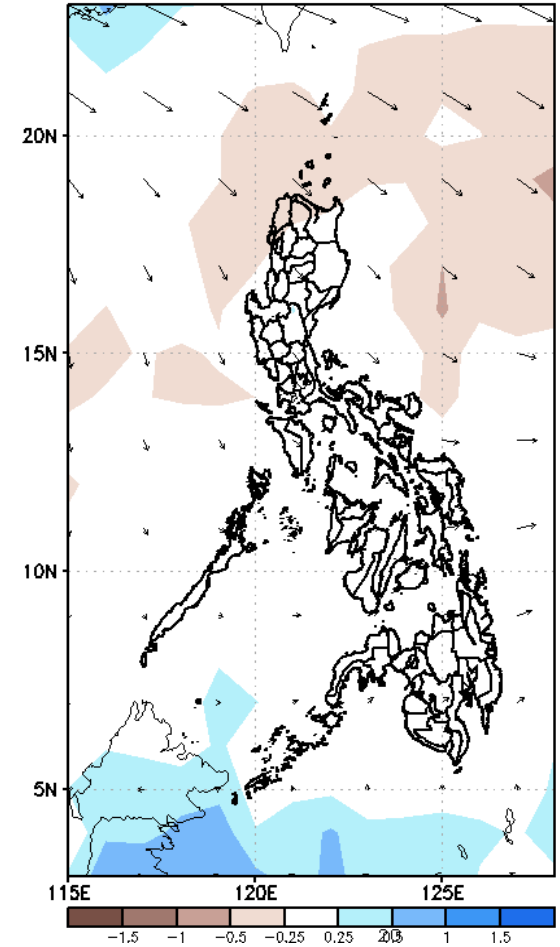
GEFS Week-2 850-hPa Divergence and Wind Anomaly
Valid: 20230505 - 20230511



GEFS Week-2 700-hPa Divergence and Wind Anomaly
Valid: 20230505 - 20230511

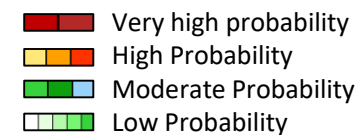


GEFS week-2 200-hPa Divergence and Wind Anomaly
Valid: 20230505 - 20230511



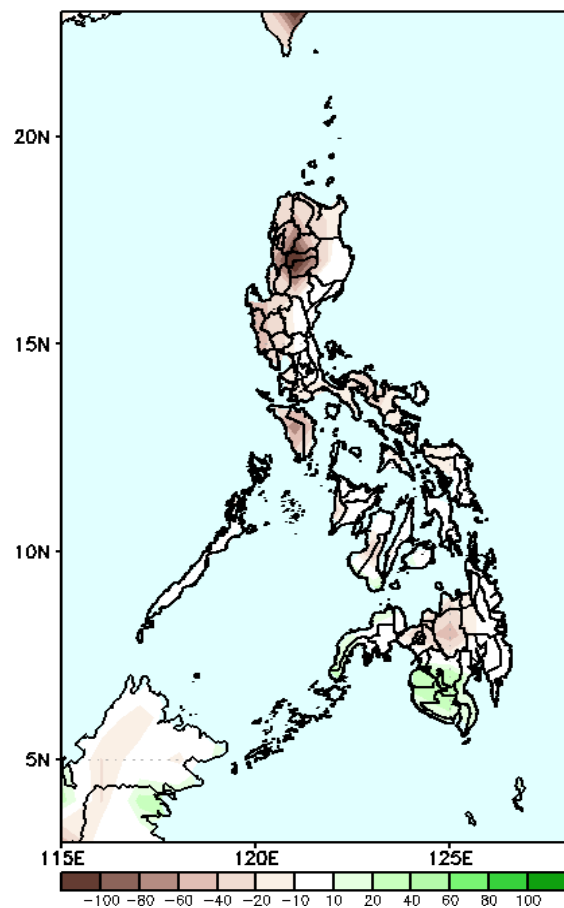
Easterlies is forecasted to affect most parts of the country; expect dry and hot weather during the forecast period.

Precipitation Anomaly and Exceedance Probability > 25/50 mm



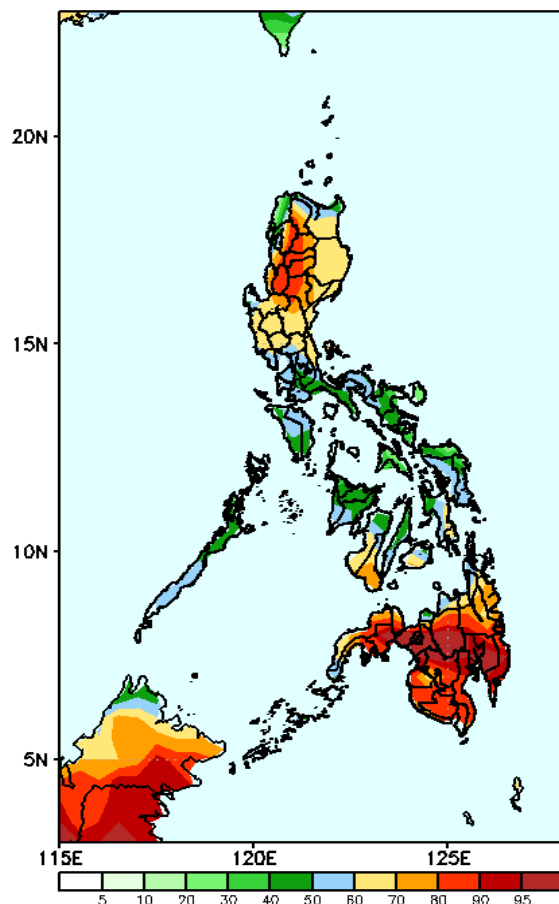
Week 2: May 05 - 11, 2023

GEFS Week-2 Precip Anomaly
Valid: 20230505 - 20230511



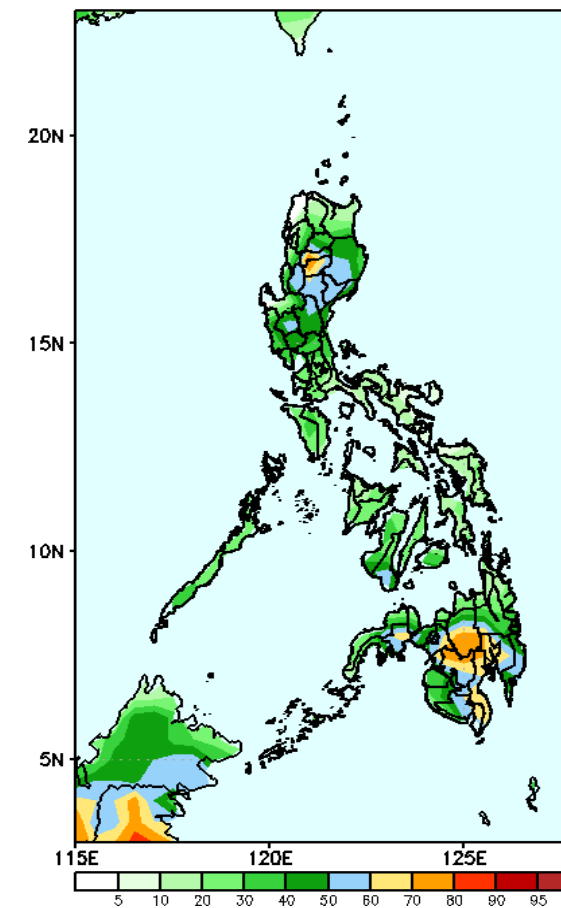
Rainfall deficit of more than 40-100mm is expected in most parts of the country except in where an increase of 20-60mm is forecasted during the forecast period.

GEFS Week-2 Exceedance Prob. > 25mm
Valid: 20230505 - 20230511



High to a very high probability to exceed 25mm of rainfall in Mindanao and most parts of Northern Luzon and Central Luzon; moderate to high probability over the rest of the country.

GEFS Week-2 Exceedance Prob. > 50mm
Valid: 20230505 - 20230511

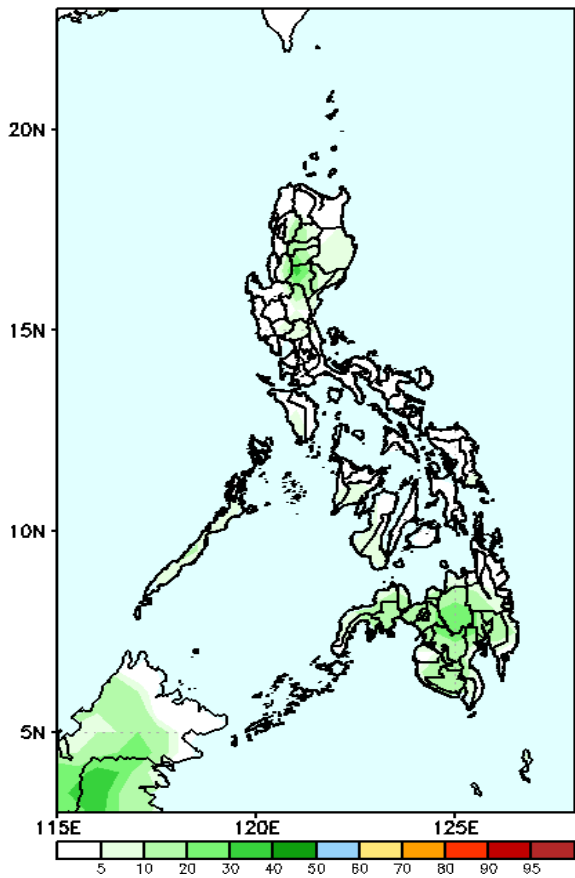


Moderate to High probability to exceed 50mm of rainfall in some parts of Mindanao, Northern and Central Luzon, and the southern parts of Negros Provinces, while low likelihood over the rest of the country.

Exceedance Probability > 100/150/200 mm

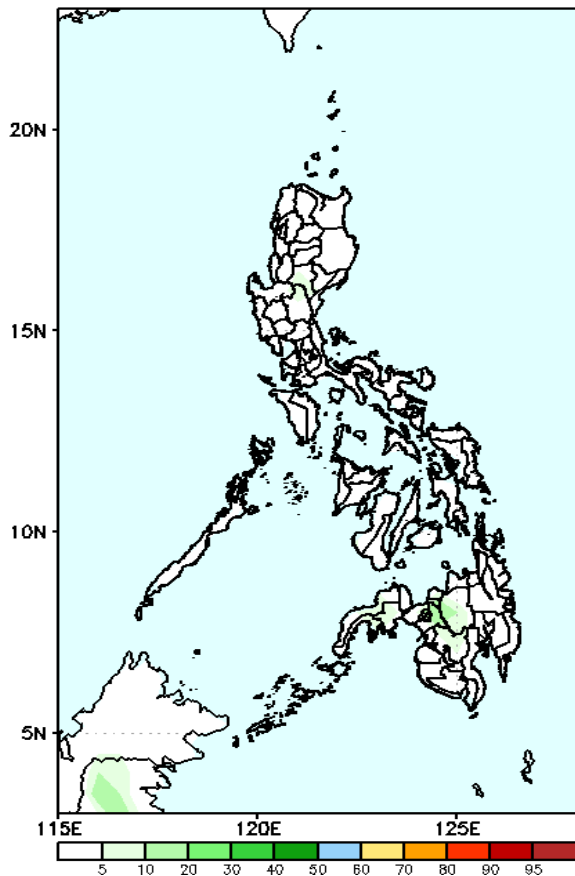
Week 2: May 05 - 11, 2023

GEFS Week-2 Exceedance Prob. > 100mm
Valid: 20230505 - 20230511



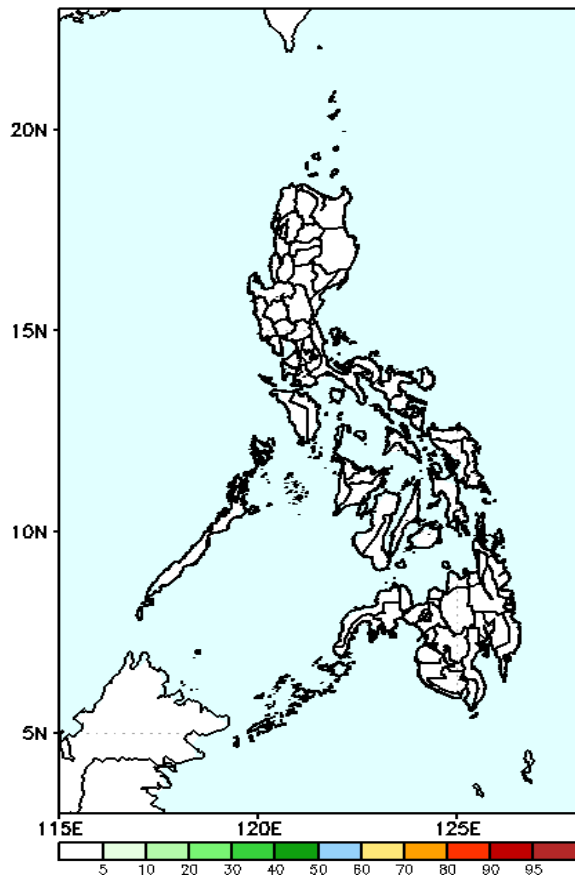
Low probability of rainfall to exceed 100mm in most parts of the country during the forecast period.

GEFS Week-2 Exceedance Prob. > 150mm
Valid: 20230505 - 20230511



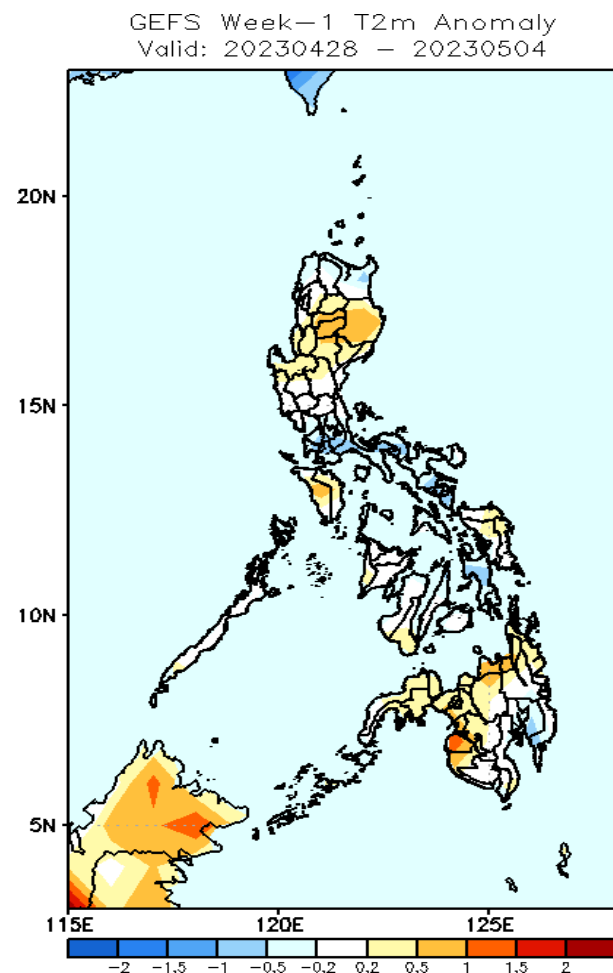
Low probability of rainfall to exceed 150mm in most parts of the country during the forecast period.

GEFS Week-2 Exceedance Prob. > 200mm
Valid: 20230505 - 20230511



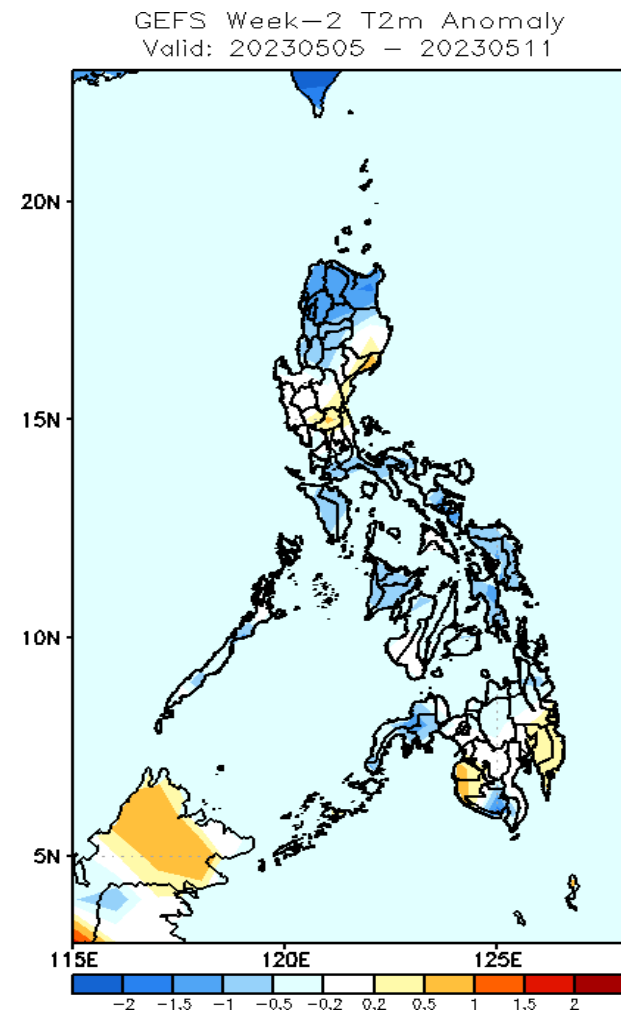
Low probability of rainfall to exceed 200mm in most parts of the country during the forecast period.

GEFS Week-1 & 2 Forecasts: T2m Anomaly



2m Temperature Week 1: Apr 28 – May 04, 2023

Average to slightly warmer than average surface air temperature anomaly will likely experience in most parts of the country except CALABARZON, Bicol region, Leyte provinces and some parts of Davao region were slightly cooler than average temperature will be likely during the forecast period.



2m Temperature Week 2: May 05-11, 2023

Average to cooler than average surface air temperature anomaly will likely experience in most parts of the country except Aurora, Bicol region, Davao Oriental, Davao de Oro, Maguindanao and Sultan Kudarat were slightly warmer than average temperature will be likely during the forecast period.