



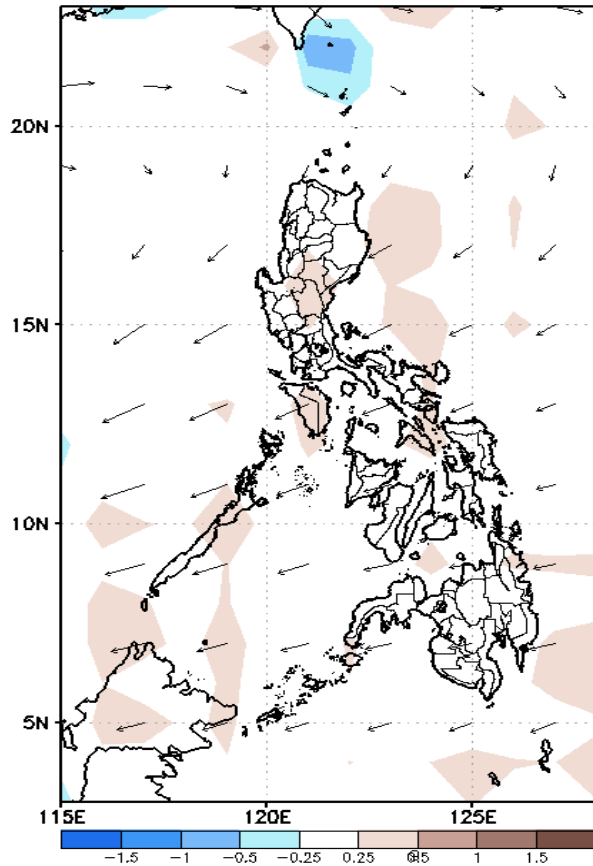
Week 1 & Week 2 Forecast for the Philippines using GEFS Model



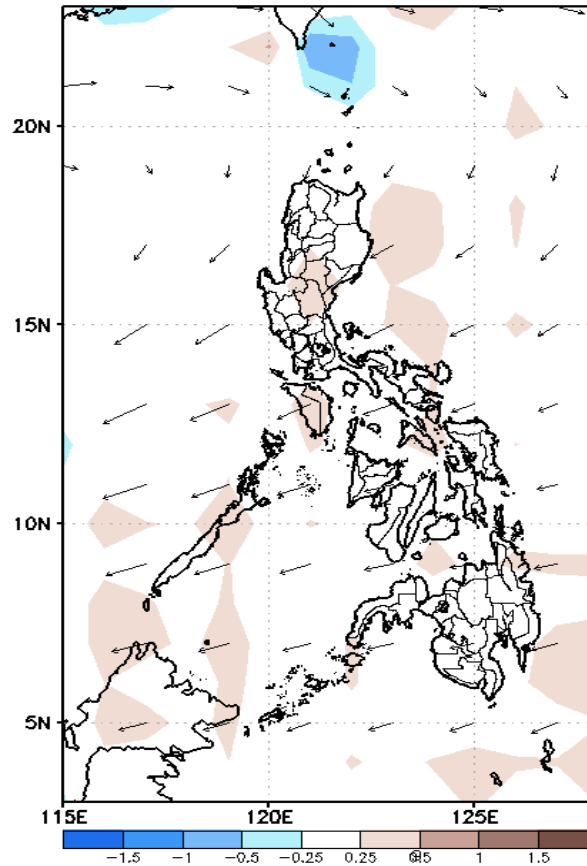
GEFS Week-1 Forecasts: Divergence & Wind Anomaly

Week 1: June 24-30, 2021

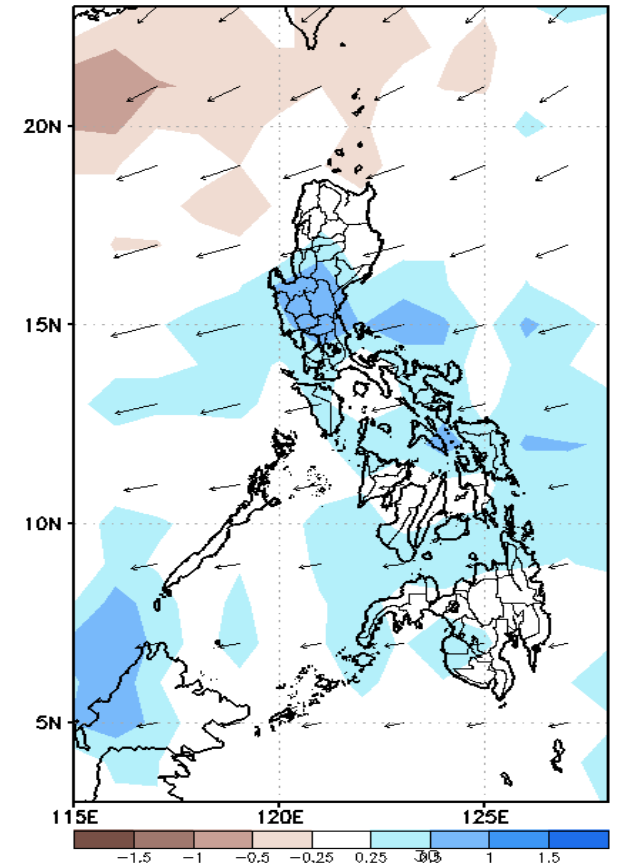
GEFS Week-1 850-hPa Divergence and Wind Anomaly
Valid: 20210628 - 20210704



GEFS Week-1 700-hPa Divergence and Wind Anomaly
Valid: 20210628 - 20210704



GEFS Week-1 200-hPa Divergence and Wind Anomaly
Valid: 20210628 - 20210704

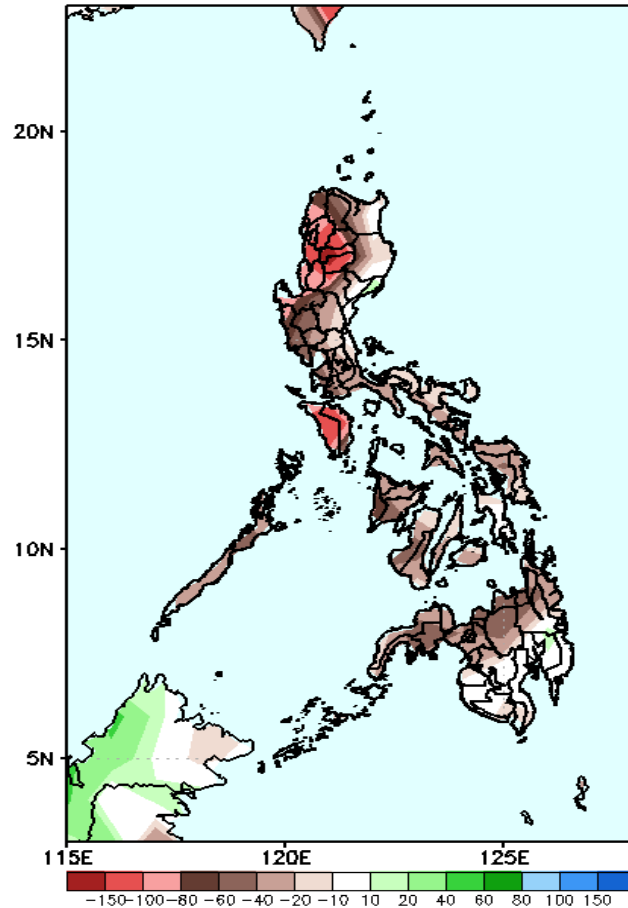


Upper and low level Divergence suggest likelihood of precipitation in some parts of Northern, most of Central Luzon, most parts Visayas and parts of Western Mindanao. Southwest monsoon affecting parts of Western Luzon while Easterlies affecting the rest of the country. Attributing to warmer temperature and higher heat index; with humid environment(especially in the western section of the country) during the forecast period.

Precipitation Anomaly and Exceedance Probability > 25/50 mm

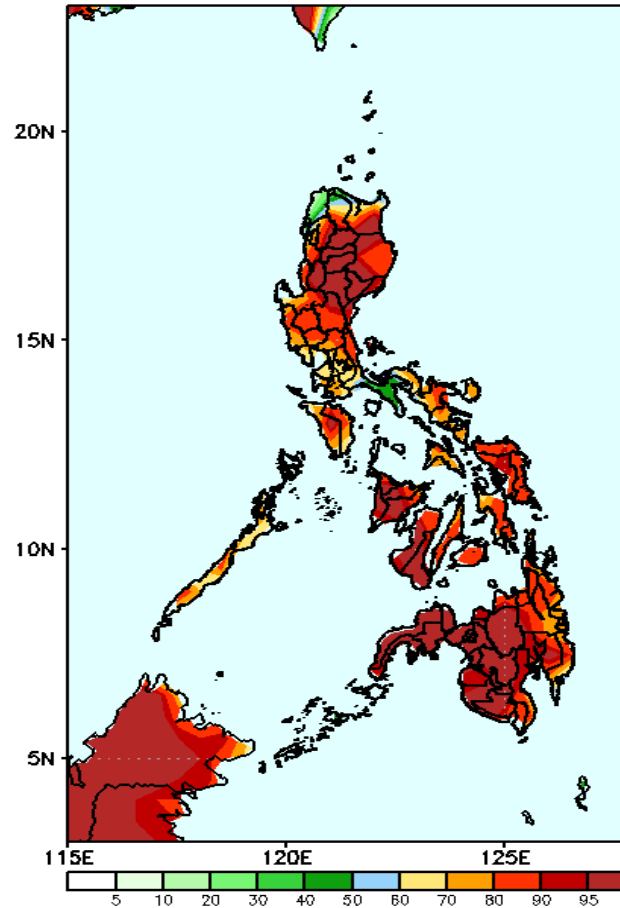
Week 1: June 24-30, 2021

GEFS Week-1 Precip Anomaly
Valid: 20210628 – 20210704



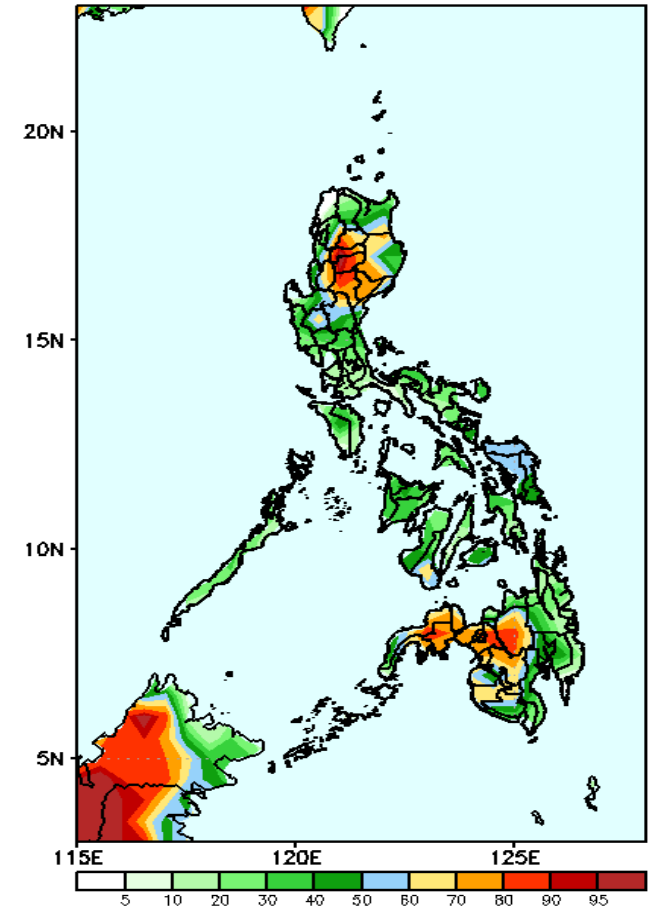
Rainfall deficit of up to 150mm is expected in Cordillera & Ilocos Region and Mindoro and 40-80mm for the rest of the country during the forecast period.

GEFS Week-1 Exceedance Prob. > 25mm
Valid: 20210628 – 20210704



High probability of rainfall to exceed 25mm in most parts of the country during the forecast period.

GEFS Week-1 Exceedance Prob. > 50mm
Valid: 20210628 – 20210704



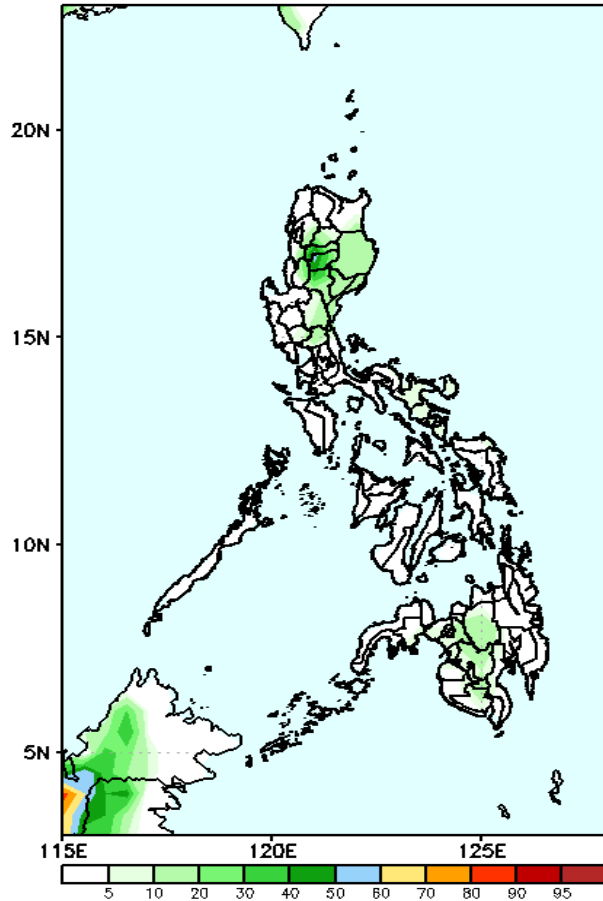
High probability of rainfall to exceed 50mm in most parts of Cordillera Region, Nueva Viscaya, Quirino, Northern Mindanao and Zamboanga Peninsula while less likely for the rest of the country during the forecast period.



Exceedance Probability > 100/150/200 mm

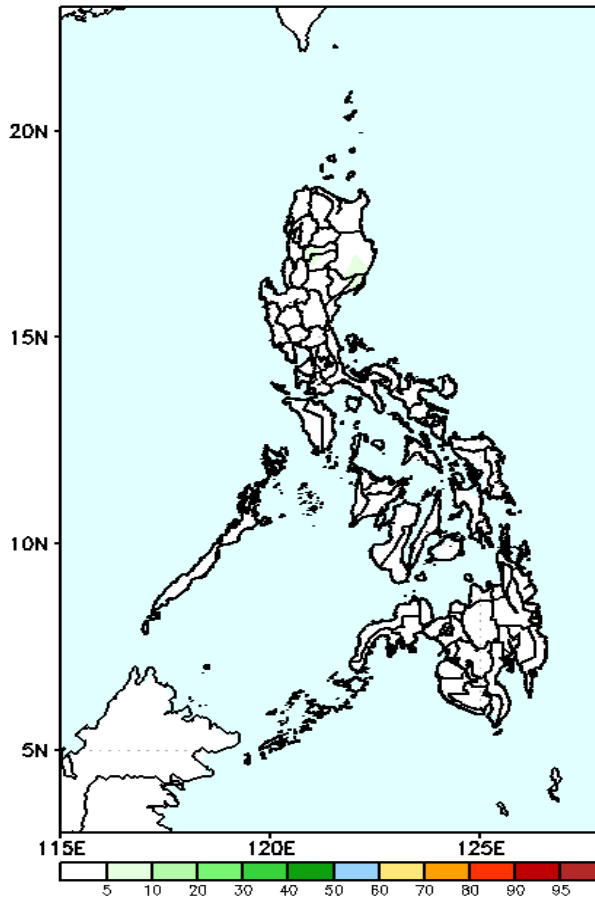
Week 1: June 24-30, 2021

GEFS Week-1 Exceedance Prob. > 100mm
Valid: 20210628 – 20210704



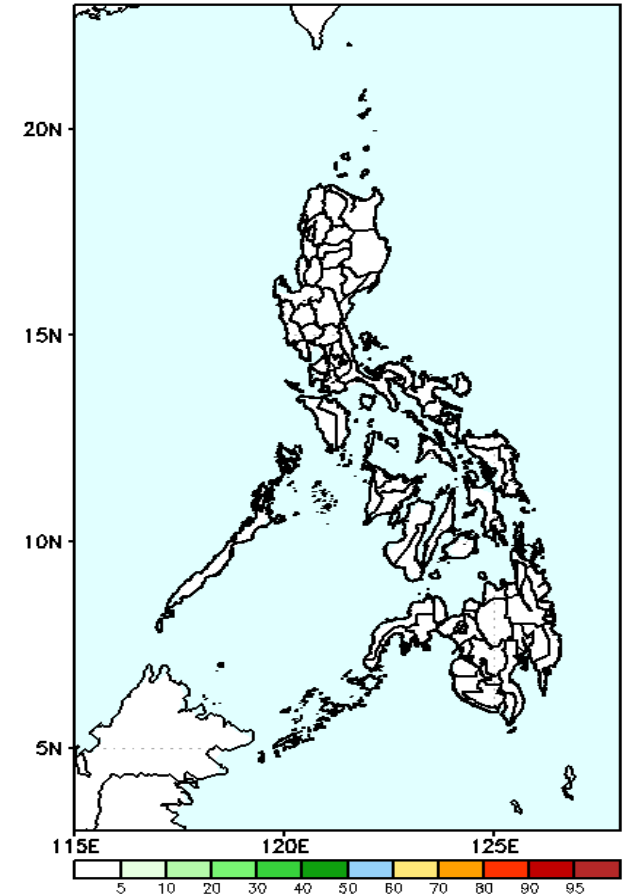
Less probability of rainfall to exceed 100mm in most parts of the country during the forecast period.

GEFS Week-1 Exceedance Prob. > 150mm
Valid: 20210628 – 20210704



Less probability of rainfall to exceed 150mm in most parts of the country during the forecast period.

GEFS Week-1 Exceedance Prob. > 200mm
Valid: 20210628 – 20210704

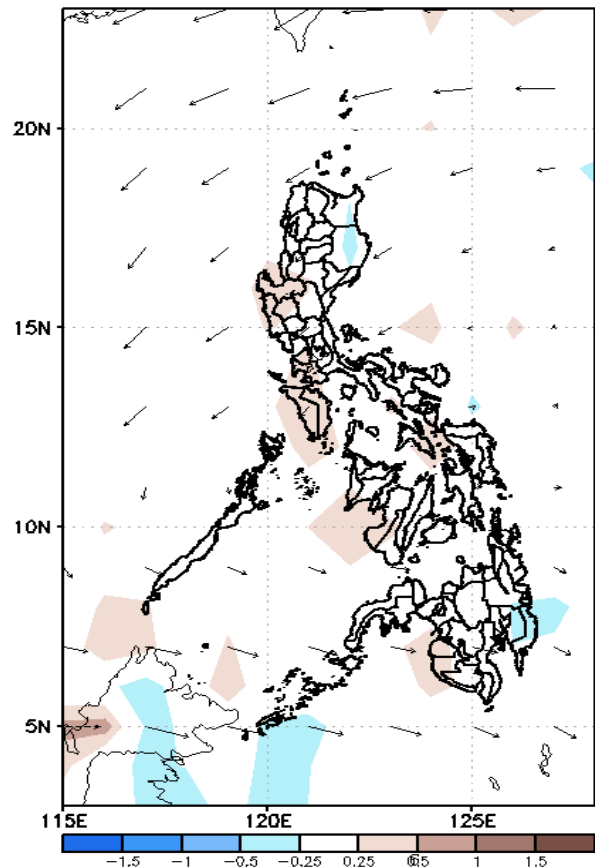


Less probability of rainfall to exceed 200mm in most parts of the country during the forecast period.

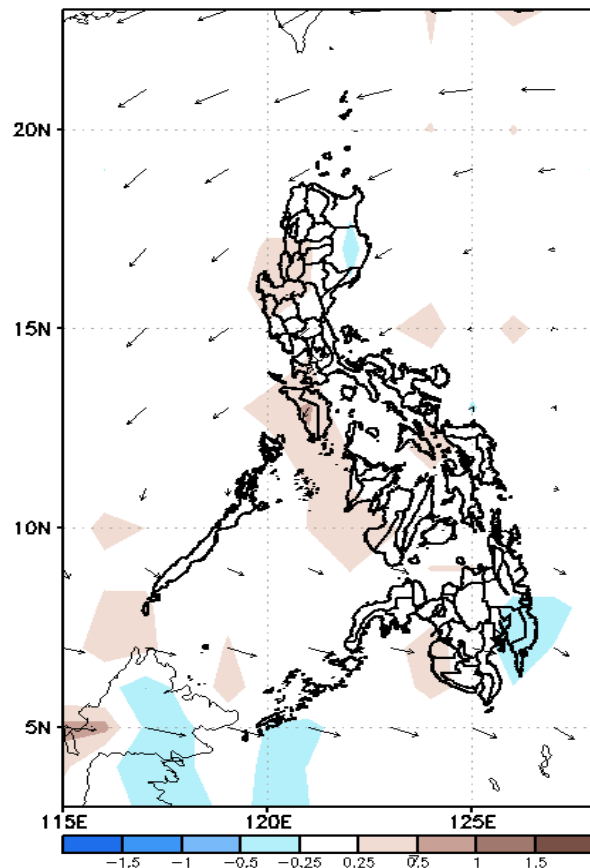
GEFS Week-2 Forecasts: Divergence & Wind Anomaly

Week 2: July 05-11, 2021

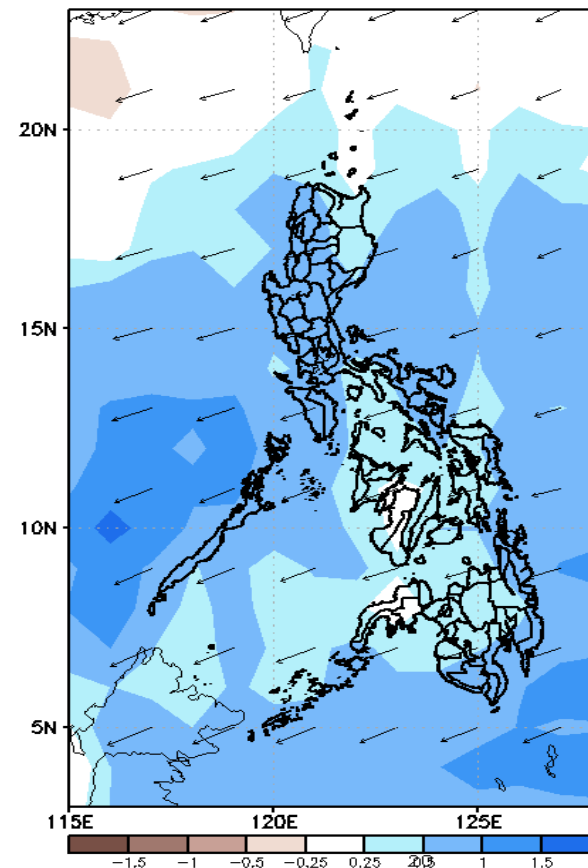
GEFS Week-2 850-hPa Divergence and Wind Anomaly
Valid: 20210705 - 20210711



GEFS Week-2 700-hPa Divergence and Wind Anomaly
Valid: 20210705 - 20210711



GEFS week-2 200-hPa Divergence and Wind Anomaly
Valid: 20210705 - 20210711

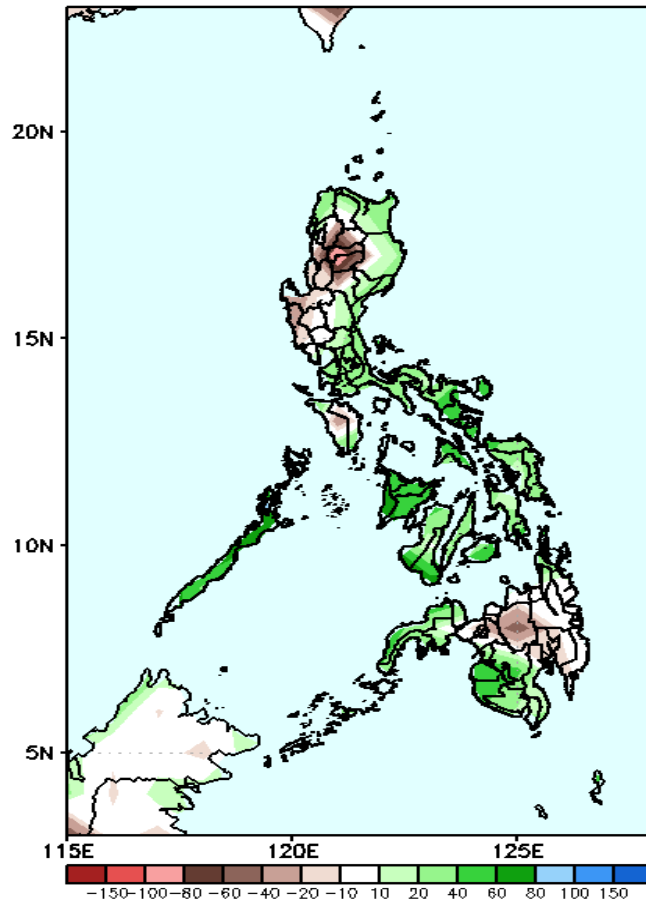


Upper and low level Divergence suggest likelihood of precipitation in most parts of the country. Southwest monsoon affecting Western Luzon and Visayas while Easterlies affecting the remaining parts of the country. Attributing to warmer temperature and higher heat index; with humid environment(especially in the western section of the country) during the forecast period.

Precipitation Anomaly and Exceedance Probability > 25/50 mm

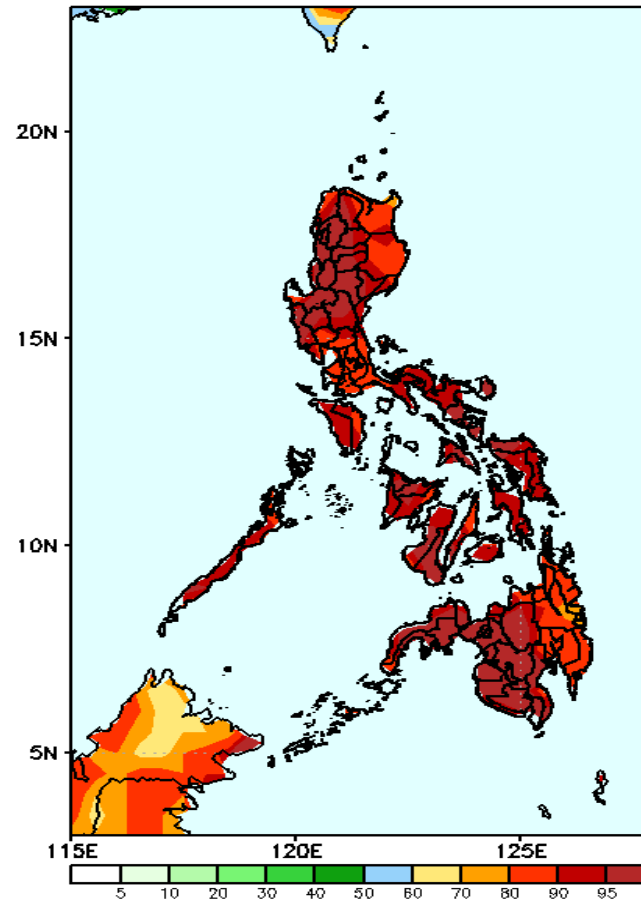
Week 2: July 05-11, 2021

GEFS Week-2 Precip Anomaly
Valid: 20210705 – 20210711



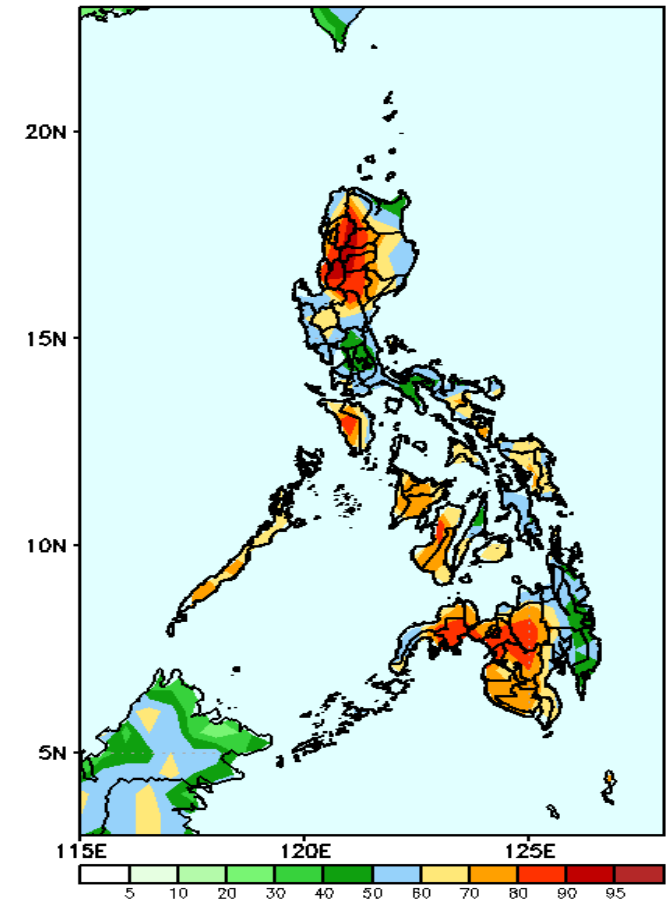
Increase of rainfall of 40-80mm is expected in most parts of the country except in Cordillera & Ilocos Region and Bukidnon where 40-100mm rainfall deficit is more likely during the forecast period.

GEFS Week-2 Exceedance Prob. > 25mm
Valid: 20210705 – 20210711



High probability of rainfall to exceed 25mm in most parts of the country during the forecast period.

GEFS Week-2 Exceedance Prob. > 50mm
Valid: 20210705 – 20210711

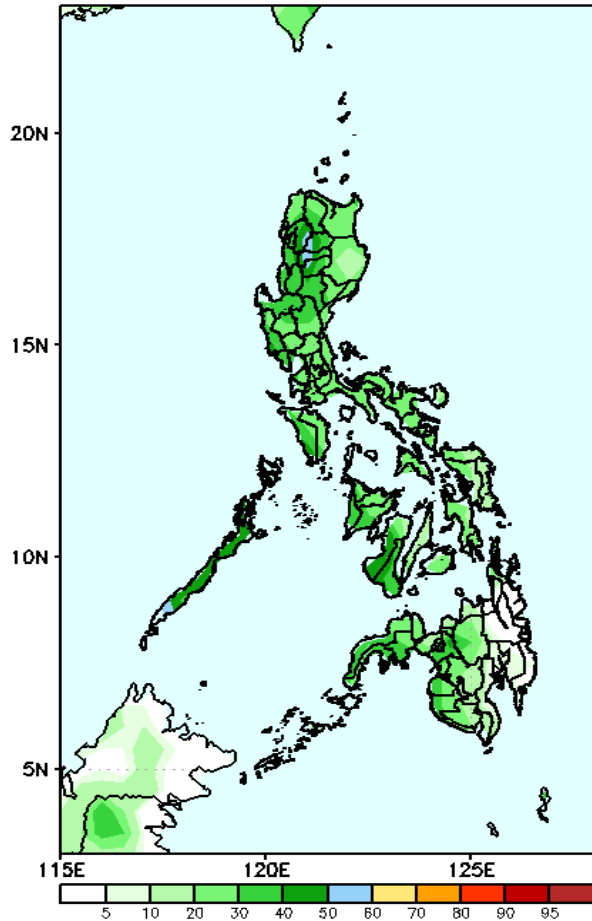


High probability of rainfall to exceed 50mm in most parts of Ilocos Region, CAR, Mindoro, Palawan, Bicol Region, most parts of Visayas and western & Northern Mindanao while less likely for rest of the country during the forecast period.

Exceedance Probability > 100/150/200 mm

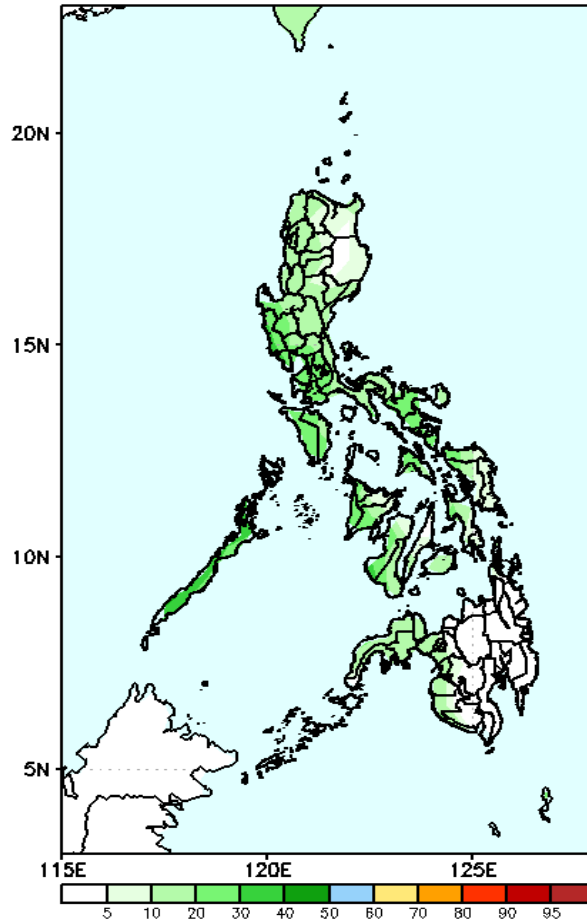
Week 2: July 05-11, 2021

GEFS Week-2 Exceedance Prob. > 100mm
Valid: 20210705 – 20210711



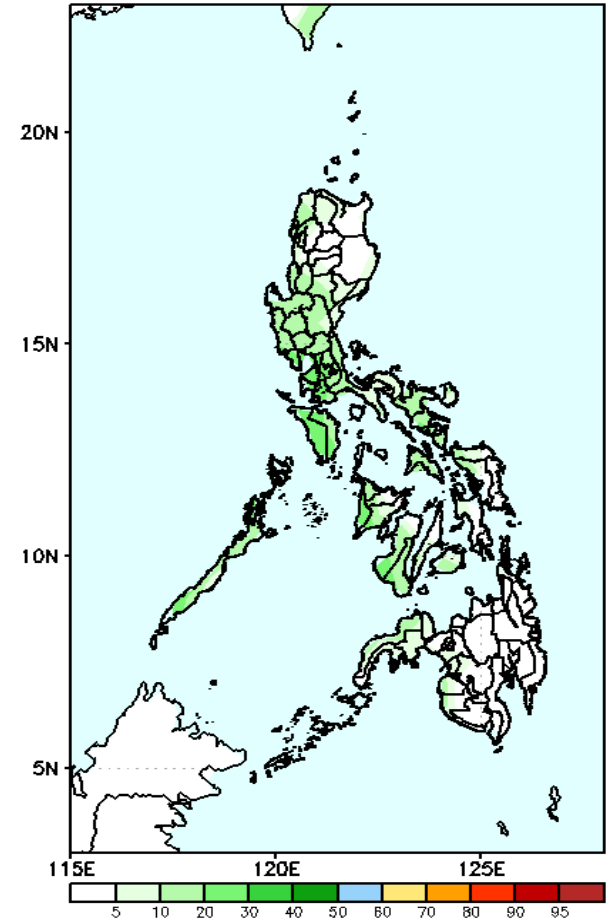
40-60% probability of rainfall to exceed 100mm in most parts of the country during the forecast period.

GEFS Week-2 Exceedance Prob. > 150mm
Valid: 20210705 – 20210711



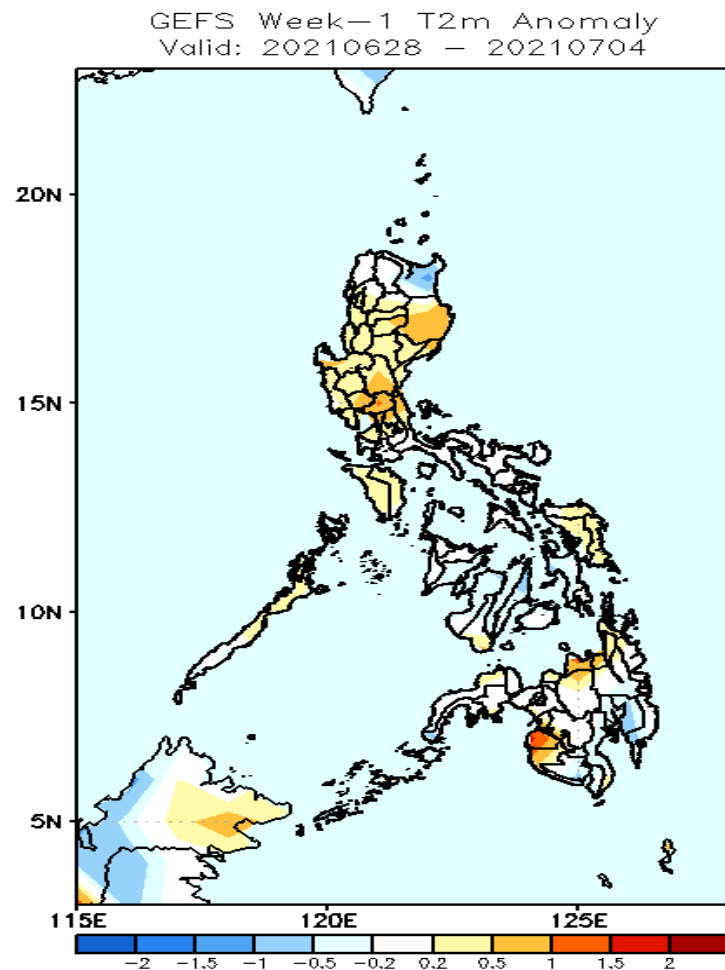
Less probability of rainfall to exceed 150mm in most parts of the country during the forecast period.

GEFS Week-2 Exceedance Prob. > 200mm
Valid: 20210705 – 20210711



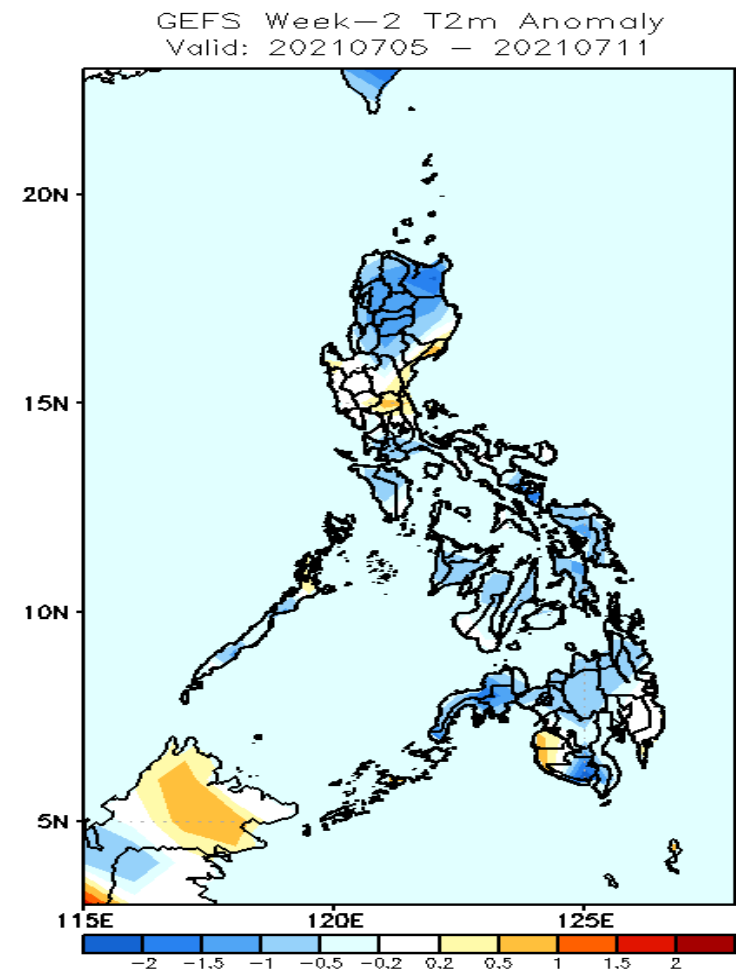
Less probability of rainfall to exceed 200mm in most parts of the country during the forecast period.

GEFS Week-1 & 2 Forecasts: T2m Anomaly



2m Temperature Week 1: June 28- Jul 04, 2021

Slightly warmer to warmer than average surface air temperature will likely experience in most parts of Luzon, Eastern Visayas, Northern Mindanao, Maguindanao and Sultan Kudarat while average to slightly cooler for the rest of the country during the forecast period.



2m Temperature Week 2: July 05-11, 2021

Slightly cooler to cooler than average surface air temperature will likely experience in most parts of the country except with some patches of average to slightly warmer than average temperature during the forecast period.