



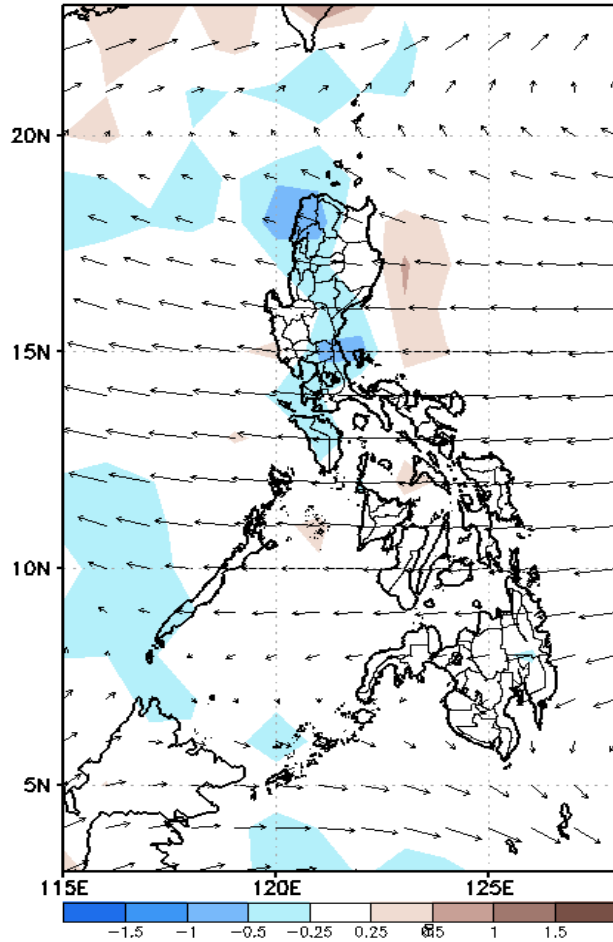
Week 1 & Week 2 Forecast for the Philippines using GEFS Model



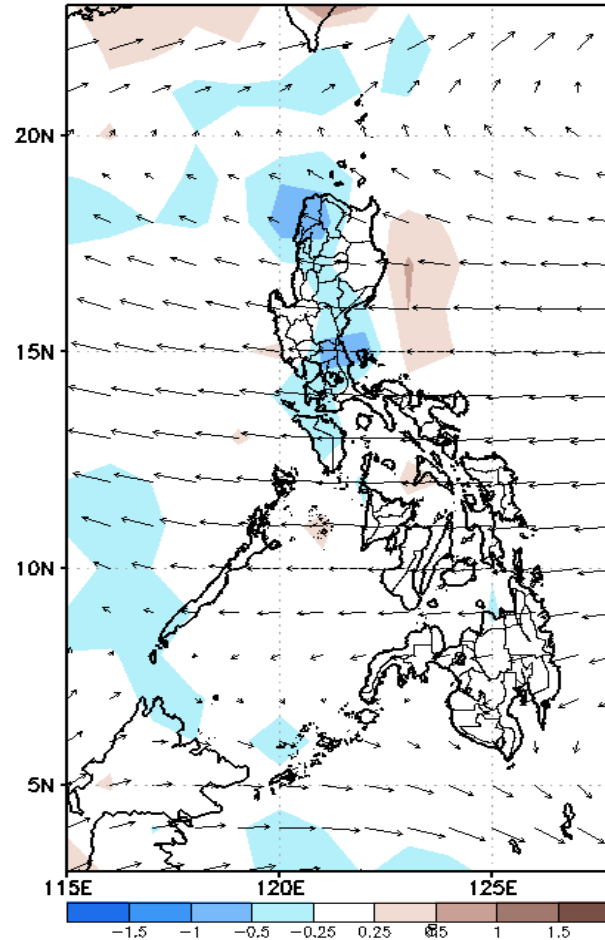
GEFS Week-1 Forecasts: Divergence & Wind Anomaly

Week 1: Apr 04-10, 2022

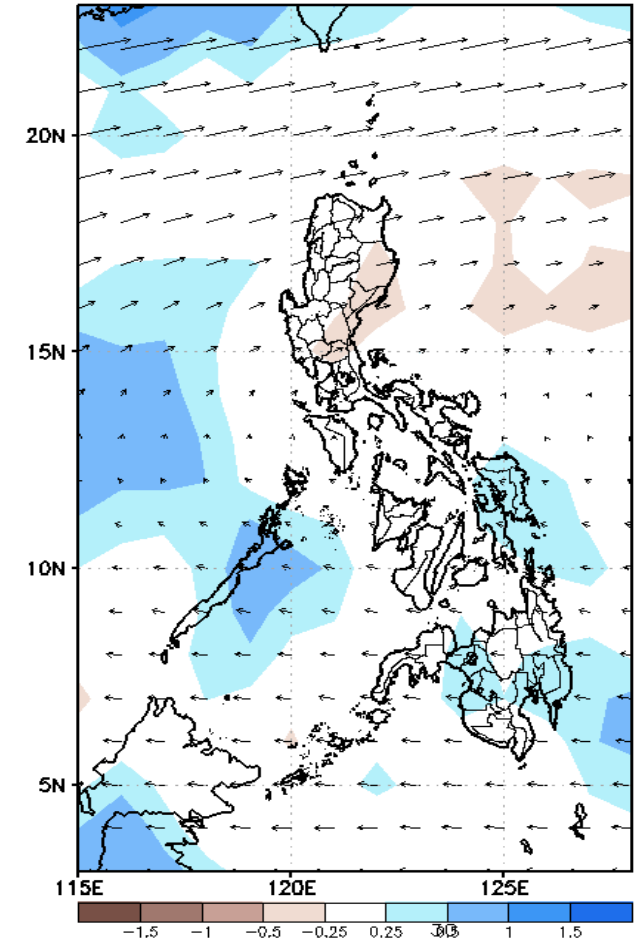
GEFS Week-1 850-hPa Divergence and Wind Anom
Valid: 20220328 - 20220403



GEFS Week-1 700-hPa Divergence and Wind Anom
Valid: 20220328 - 20220403



GEFS Week-1 200-hPa Divergence and Wind Anom
Valid: 20220328 - 20220403

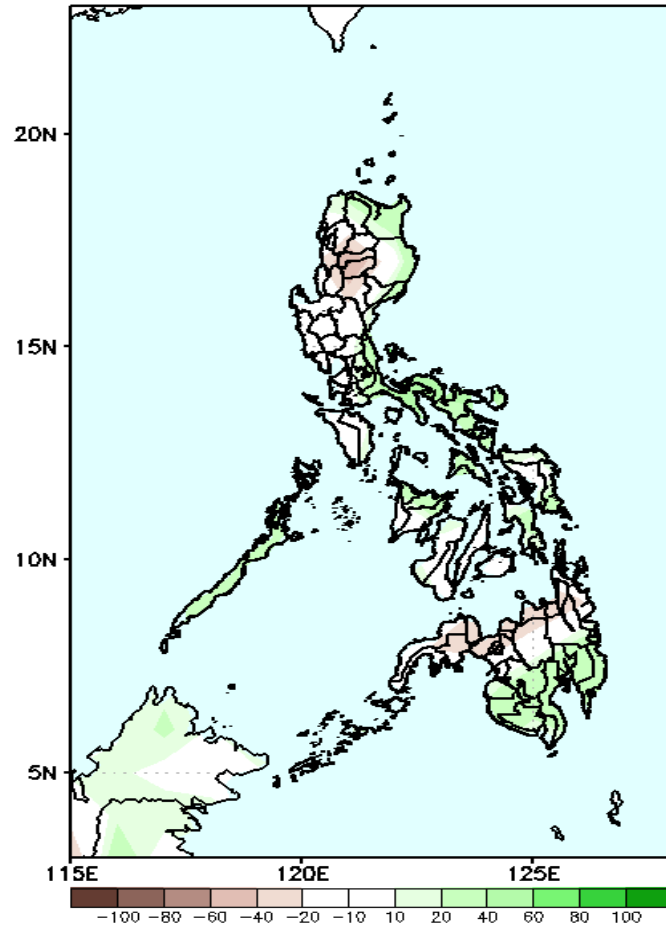


Upper and low level Divergence suggest a likelihood of light to moderate precipitation in Palawan and most parts of Eastern Visayas and Mindanao. Easterlies affecting most parts of the country attributing to warmer temperatures during the forecast period.

Precipitation Anomaly and Exceedance Probability > 25/50 mm

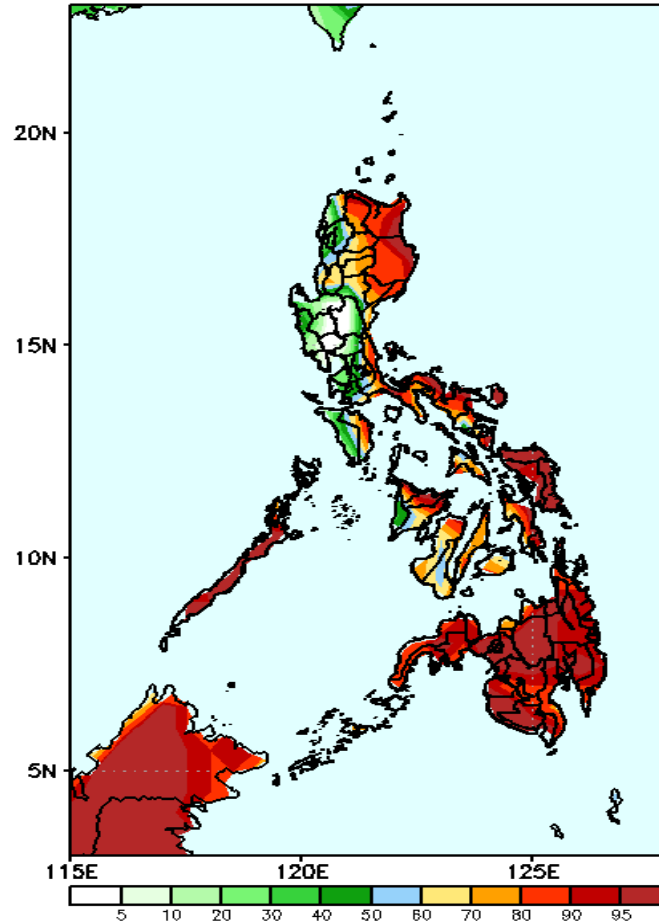
Week 1: Apr 04-10, 2022

GEFS Week-1 Precip Anomaly
Valid: 20220328 - 20220403



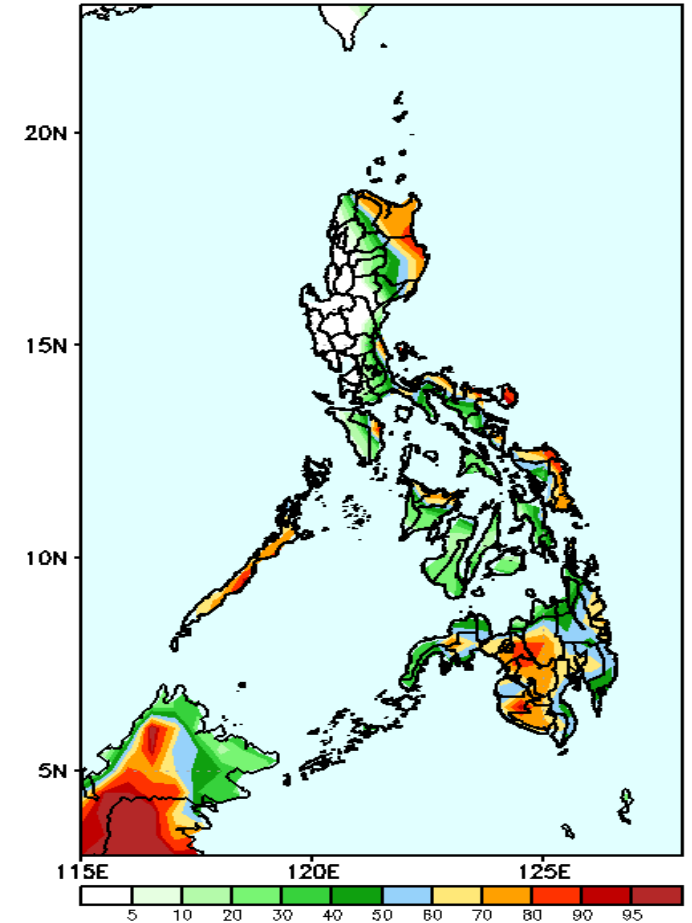
Increase of rainfall 20-60mm is expected in most parts of eastern Luzon, Eastern Samar, Southern Leyte, Palawan, Aklan, Capiz, and southern Mindanao while 20-40mm rainfall deficit in Cordillera Region and Northern Mindanao.

GEFS Week-1 Exceedance Prob. > 25mm
Valid: 20220328 - 20220403



High probability of rainfall to exceed 25mm in most parts of the country except in the western parts of Luzon(excluding Palawan) during the forecast period.

GEFS Week-1 Exceedance Prob. > 50mm
Valid: 20220328 - 20220403

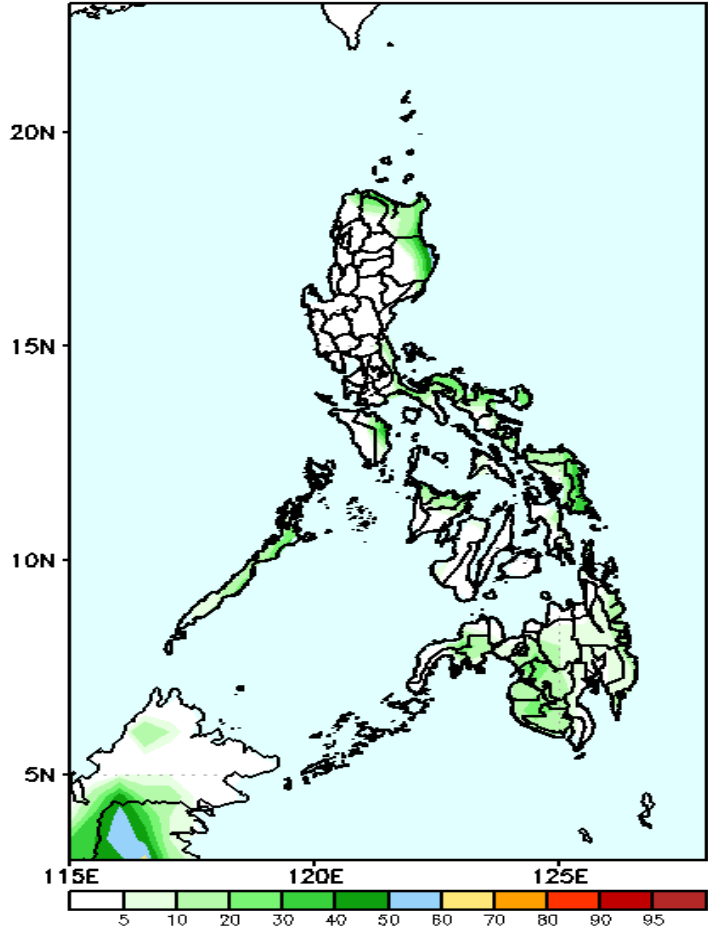


50-90% probability of rainfall to exceed 50mm in Palawan and most parts of eastern Luzon, Visayas & Mindanao while less likely for the rest of Luzon during the forecast period.

Exceedance Probability > 100/150/200 mm

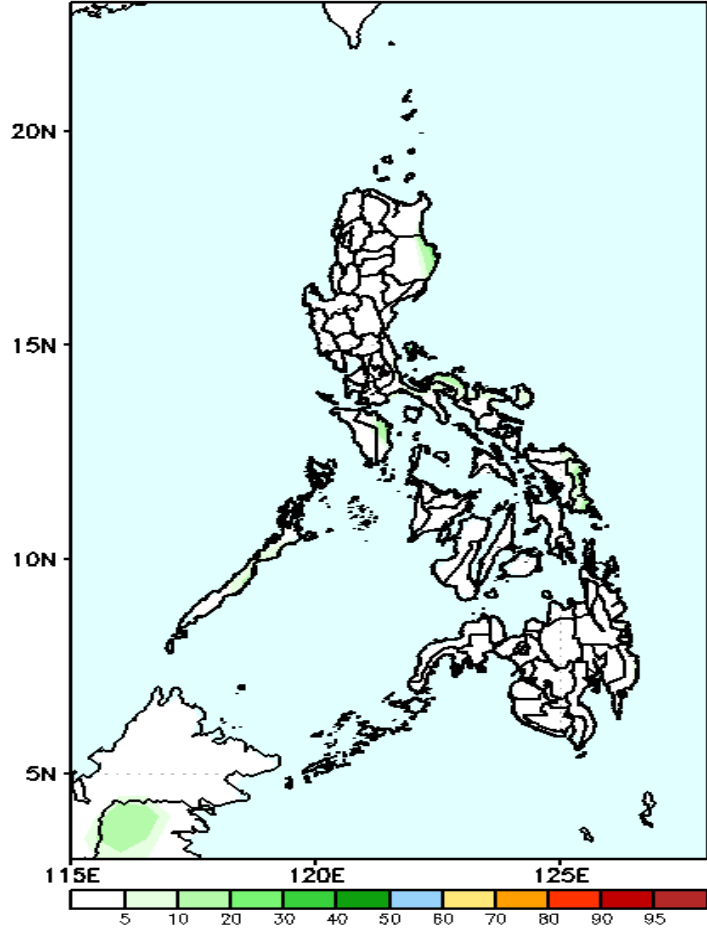
Week 1: Apr 04-10, 2022

GEFS Week-1 Exceedance Prob. > 100mm
Valid: 20220328 – 20220403



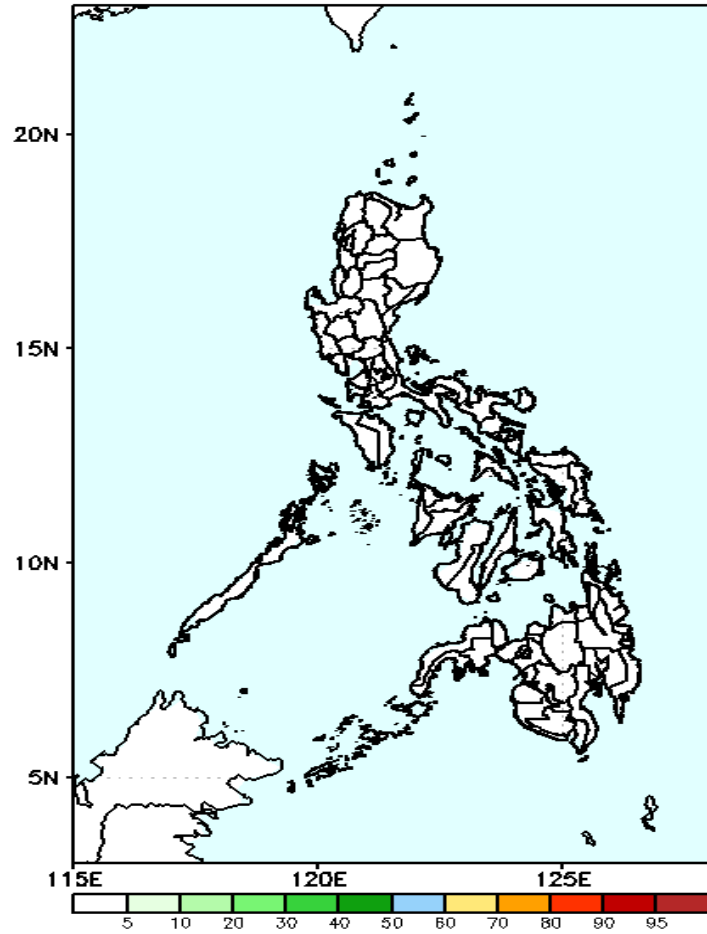
Low probability of rainfall to exceed 100mm in most parts of the country during the forecast period.

GEFS Week-1 Exceedance Prob. > 150mm
Valid: 20220328 – 20220403



Low probability of rainfall to exceed 150mm in most parts of the country during the forecast period.

GEFS Week-1 Exceedance Prob. > 200mm
Valid: 20220328 – 20220403

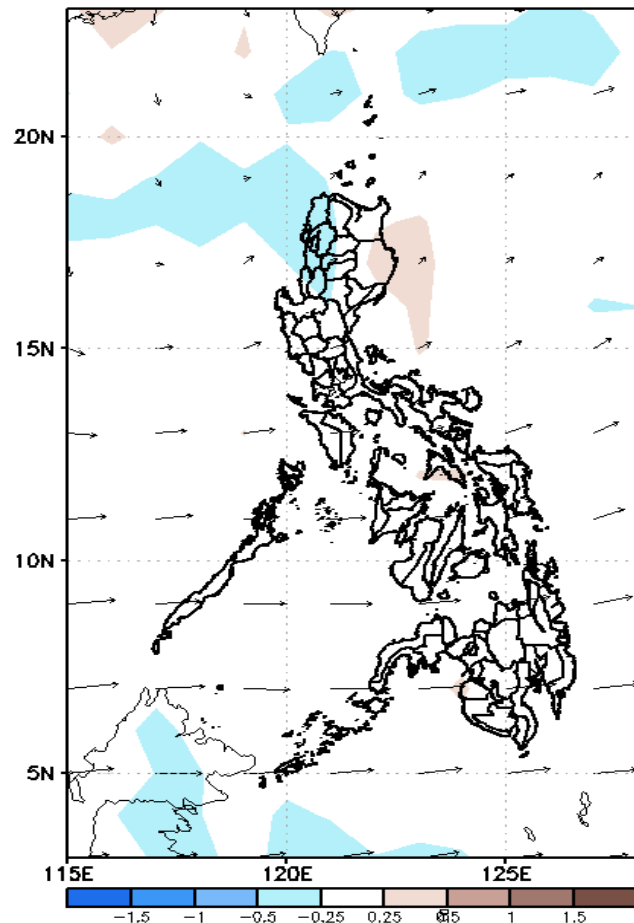


Low probability of rainfall to exceed 200mm in most parts of the country during the forecast period.

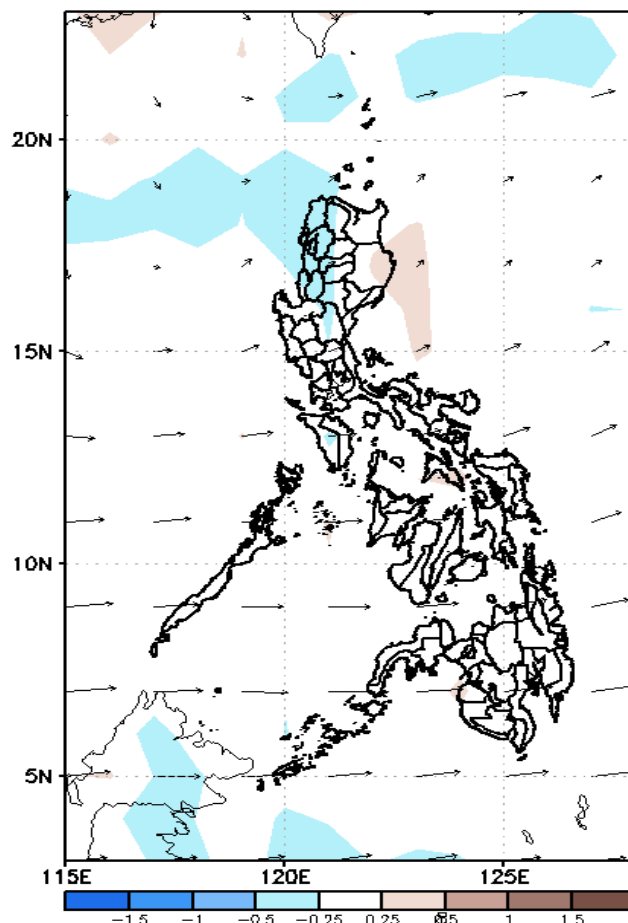
GEFS Week-2 Forecasts: Divergence & Wind Anomaly

Week 2: Mar 28-Apr 03, 2022

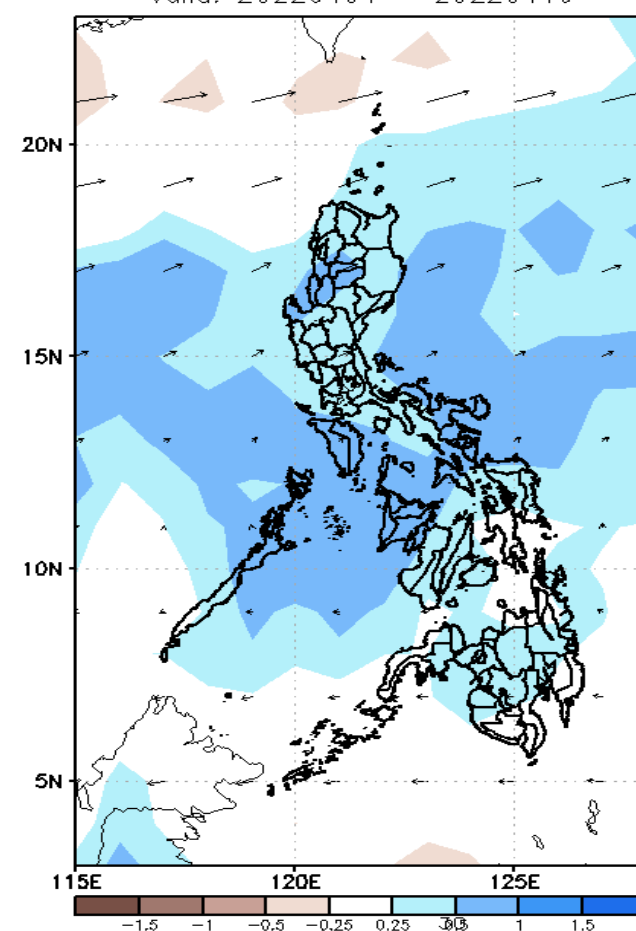
GEFS Week-2 850-hPa Divergence and Wind Anom
Valid: 20220404 - 20220410



GEFS Week-2 700-hPa Divergence and Wind Anom
Valid: 20220404 - 20220410



GEFS week-2 200-hPa Divergence and Wind Anom
Valid: 20220404 - 20220410

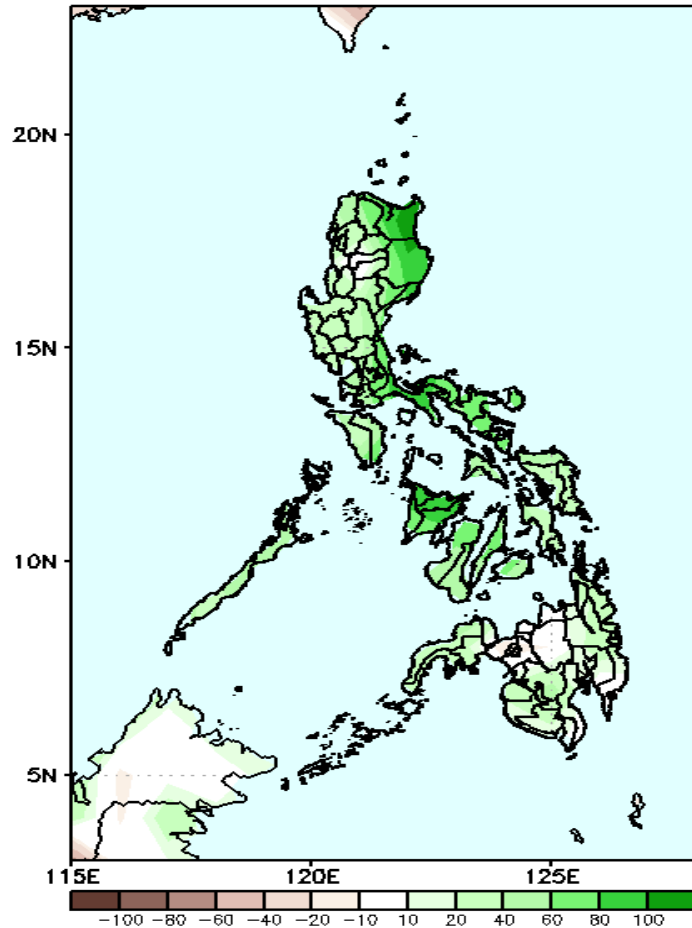


Upper and low level Divergence suggest a likelihood of light to moderate precipitation in most parts of the country. Easterlies affecting most parts of the country attributing to warmer temperatures during the forecast period.

Precipitation Anomaly and Exceedance Probability > 25/50 mm

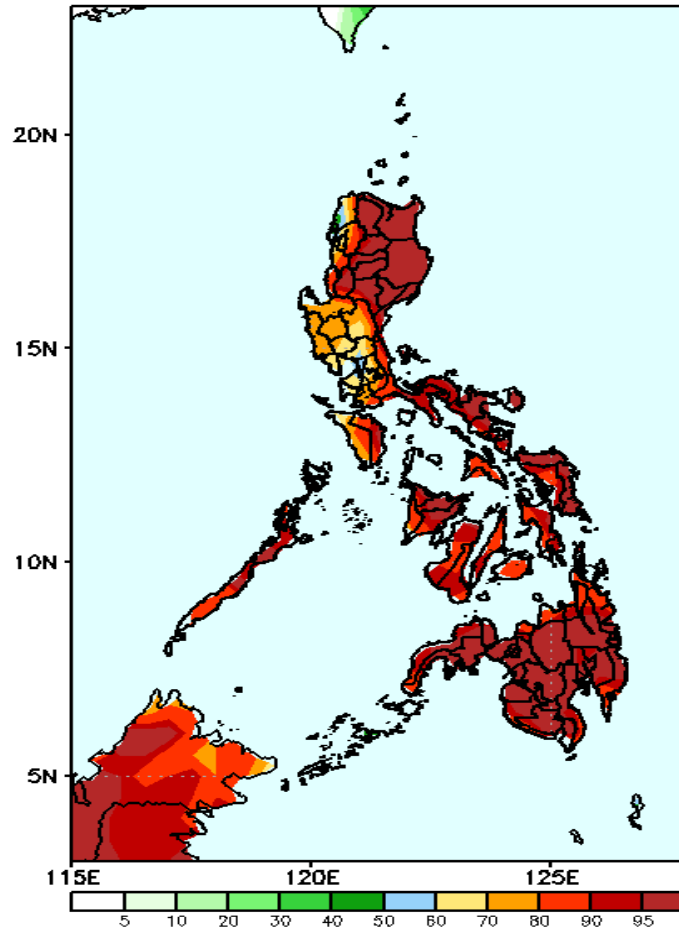
Week 2: Mar 28-Apr 03, 2022

GEFS Week-2 Precip. Anomaly
Valid: 20220404 - 20220410



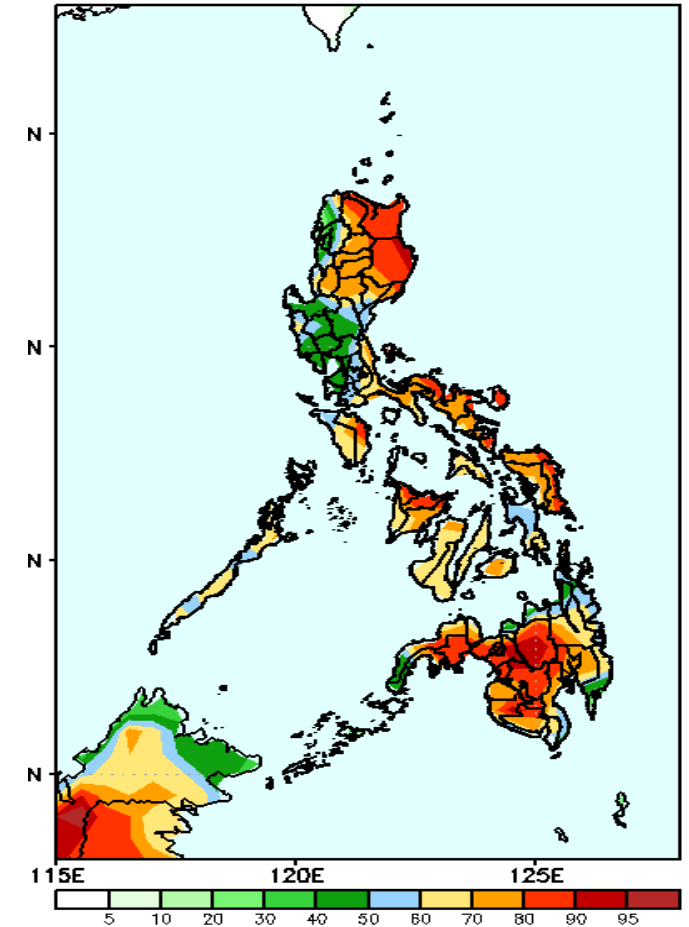
Increase of rainfall of 60-100mm in most parts of the country except in some areas in Mt. Province, Ifugao & Northern Mindanao during the forecast period.

GEFS Week-2 Exceedance Prob. > 25mm
Valid: 20220404 - 20220410



High probability of rainfall to exceed 25mm in most parts of the country during the forecast period.

GEFS Week-2 Exceedance Prob. > 50mm
Valid: 20220404 - 20220410



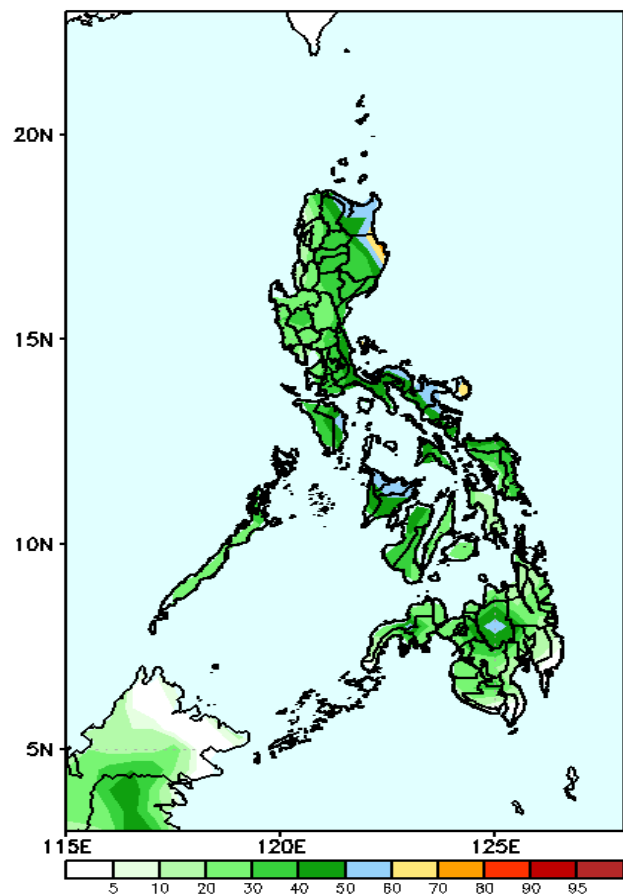
70-100% probability of rainfall to exceed 50mm in most parts of the country except in Ilocos Region & Central Luzon during the forecast period



Exceedance Probability > 100/150/200 mm

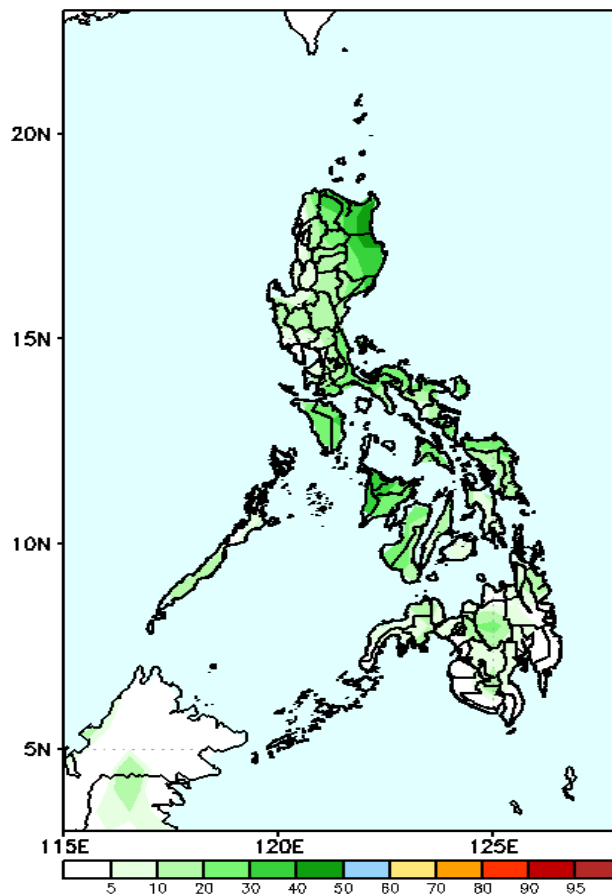
Week 2: Mar 28-Apr 03, 2022

GEFS Week-2 Exceedance Prob. > 100mm
Valid: 20220404 – 20220410



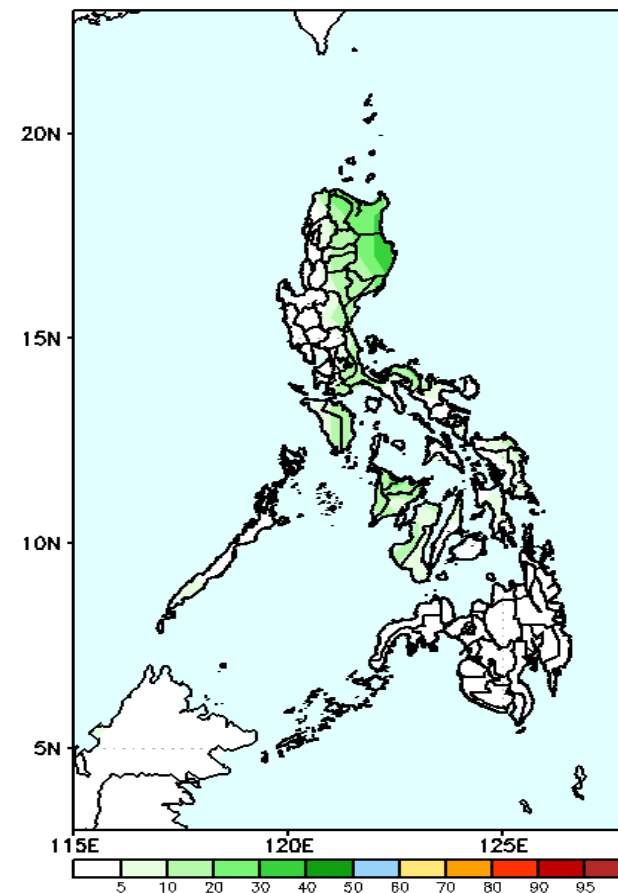
Low probability of rainfall to exceed 100mm in most parts of the country during the forecast period.

GEFS Week-2 Exceedance Prob. > 150mm
Valid: 20220404 – 20220410



Low probability of rainfall to exceed 150mm in most parts of the country during the forecast period.

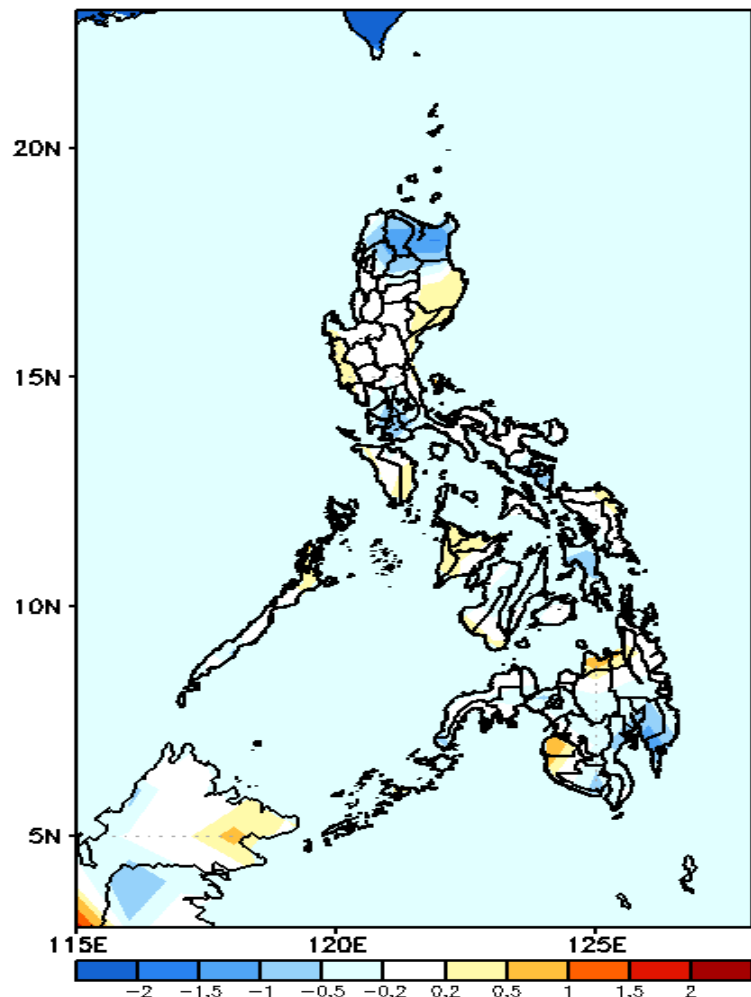
GEFS Week-2 Exceedance Prob. > 200mm
Valid: 20220404 – 20220410



Low probability of rainfall to exceed 200mm in most parts of the country during the forecast period.

GEFS Week-1 & 2 Forecasts: T2m Anomaly

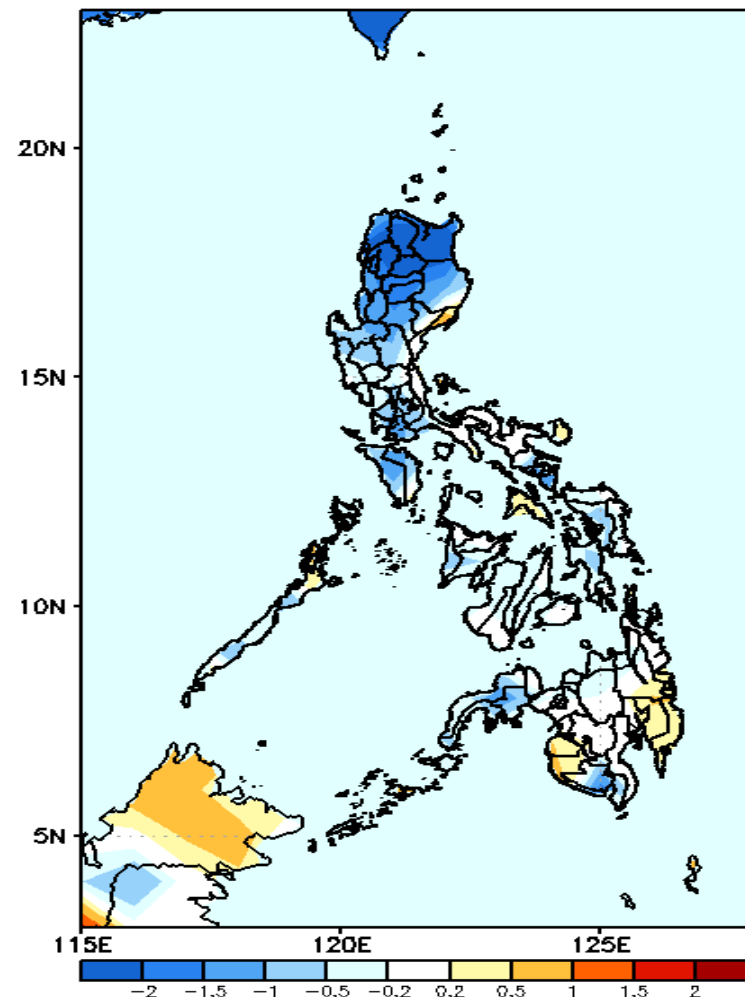
GEFS Week-1 T2m Anomaly
Valid: 20220328 — 20220403



2m Temperature Week 1: Mar 28-Apr 03, 2022

Average to slightly warmer than average surface air temperature will likely experience in most parts of the country except in northern Luzon. Southern Leyte and Davao Region where slightly cooler temp is expected during the forecast period

GEFS Week-2 T2m Anomaly
Valid: 20220404 — 20220410



2m Temperature Week 2: Apr 04-10, 2022

Cooler than average surface air temperature will likely experience in most parts of Luzon, average to slightly cooler temperature in Visayas and average to slightly warmer temperature in Mindanao during the forecast period