



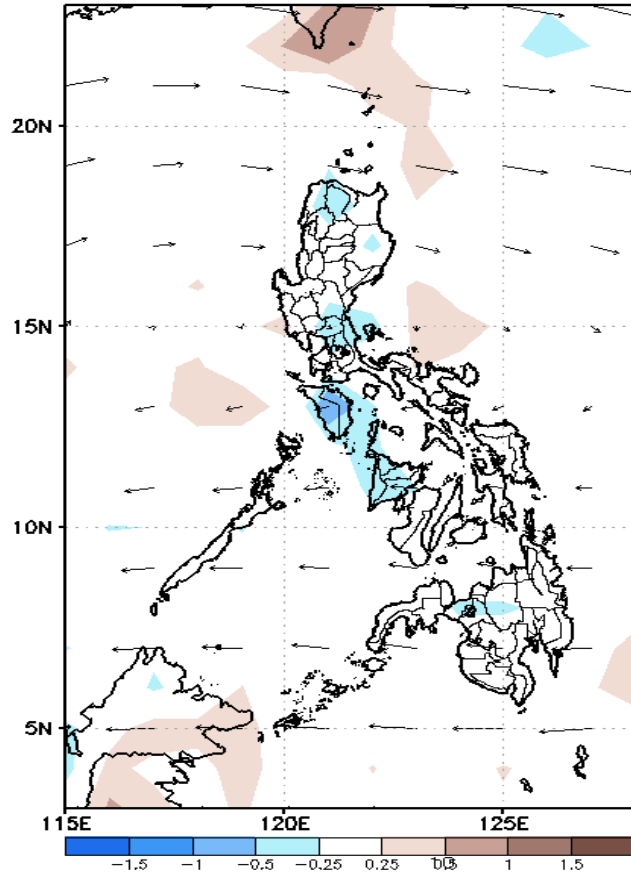
Week 1 & Week 2 Forecast for the Philippines using GEFS Model



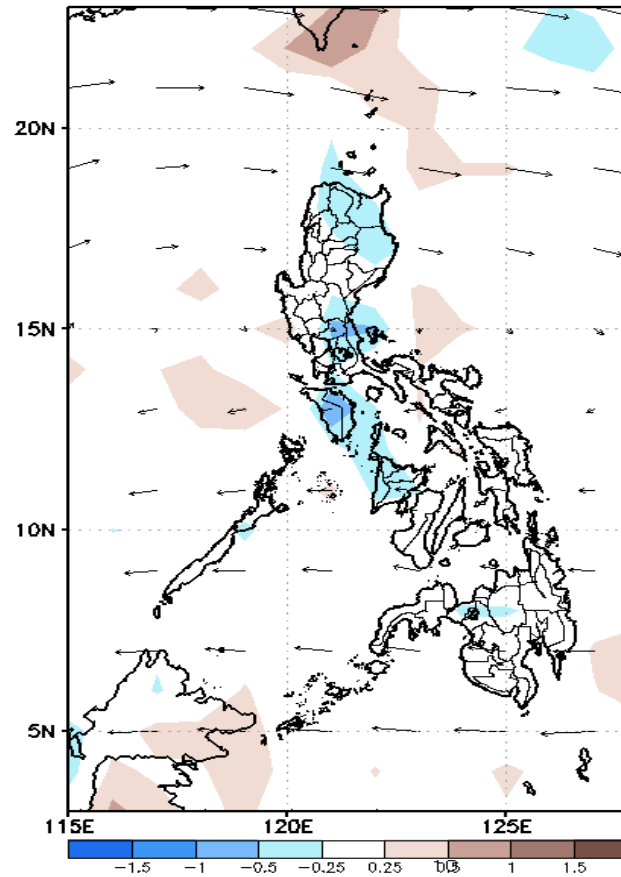
GEFS Week-1 Forecasts: Divergence & Wind Anomaly

Week 1: Oct 28- Nov 03, 2021

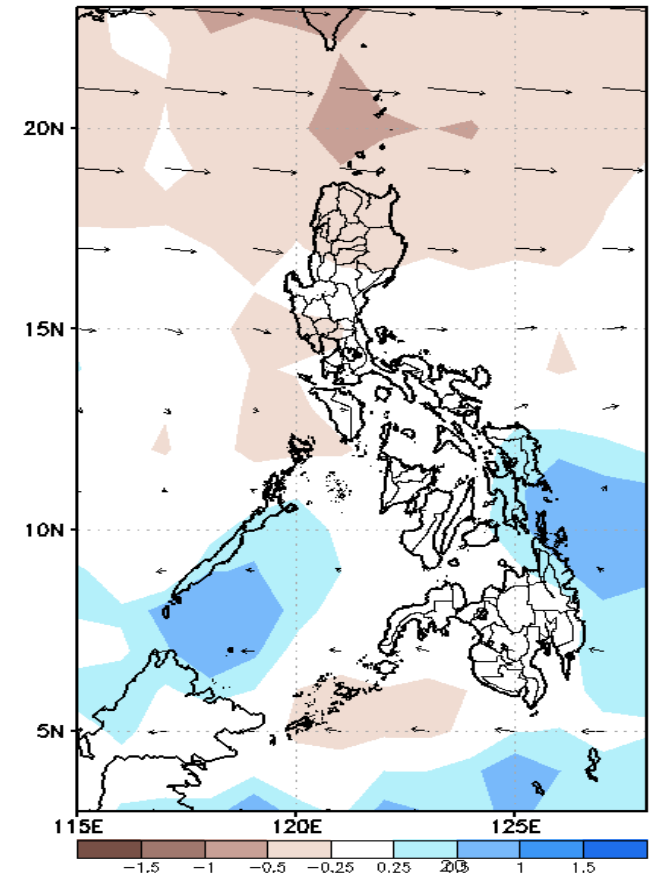
GEFS Week-1 850-hPa Divergence and Wind Anom
Valid: 20211028 - 20211103



GEFS Week-1 700-hPa Divergence and Wind Anom
Valid: 20211028 - 20211103



GEFS Week-1 200-hPa Divergence and Wind Anom
Valid: 20211028 - 20211103

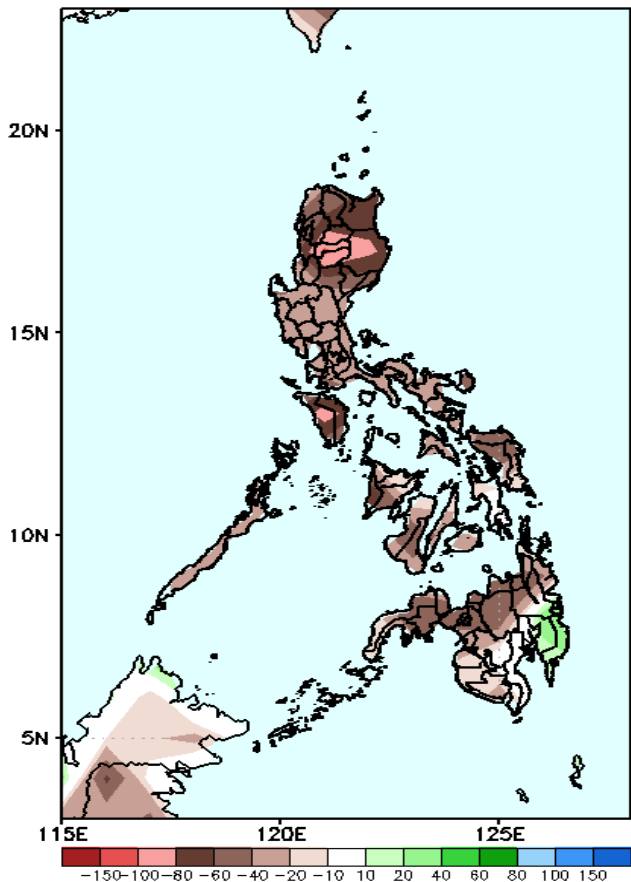


Upper and low level Divergence suggest likelihood of light precipitation in most parts of Luzon, Panay island, Eastern Visayas and Mindanao. Northeast Monsoon affecting the eastern sections of Luzon and Visayas. Easterlies affecting most parts of Mindanao. Attributing to light to moderate rains due to thunderstorms during the forecast period.

Precipitation Anomaly and Exceedance Probability > 25/50 mm

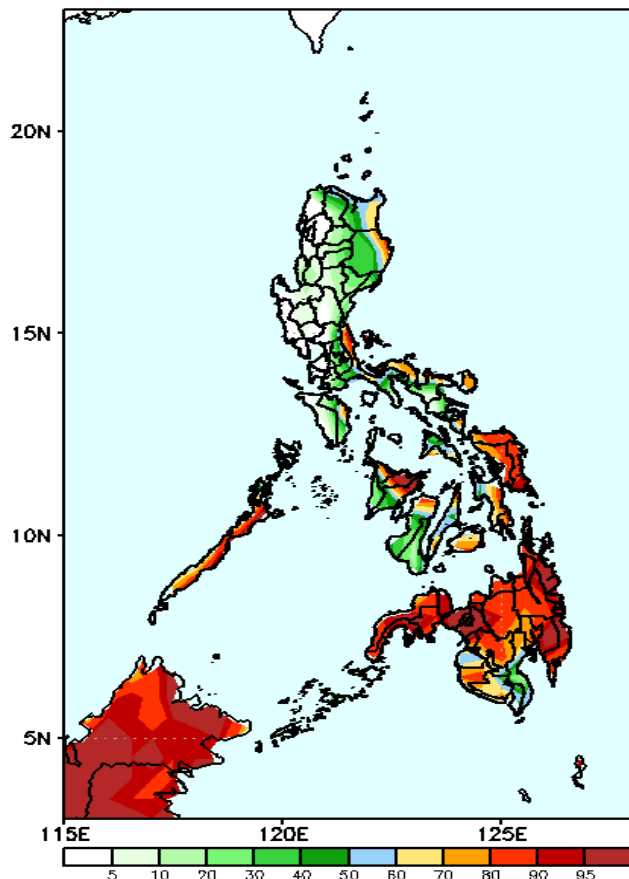
Week 1: Oct 28- Nov 03, 2021

GEFS Week-1 Precip Anomaly
Valid: 20211028 - 20211103



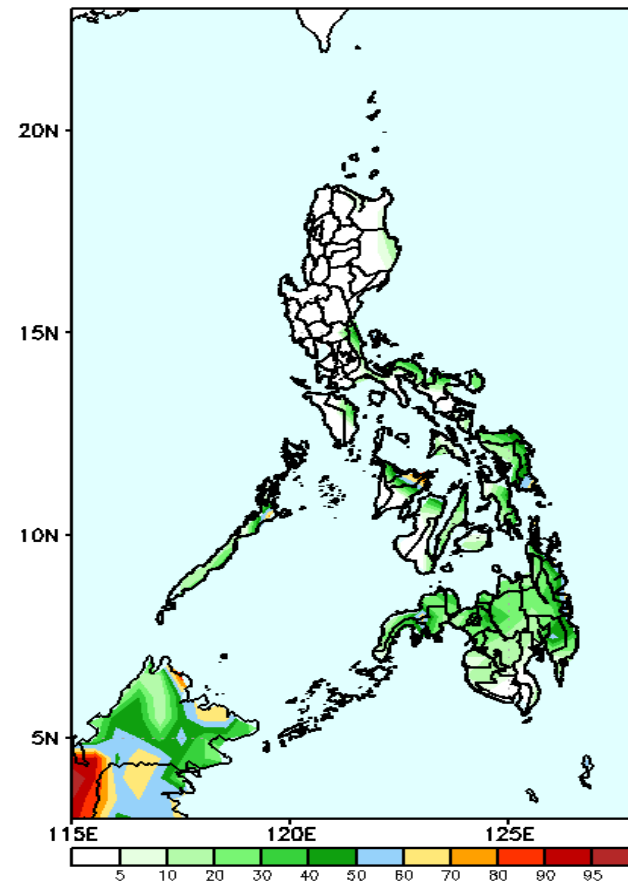
Rainfall deficit of 20-80mm in most parts of the country and up to 100mm in Cordillera Region & Isabela while increase of rainfall of 20-40mm in southeastern Mindanao during the forecast period.

GEFS Week-1 Exceedance Prob. > 25mm
Valid: 20211028 - 20211103



High probability of rainfall to exceed 25mm in some parts of Eastern Luzon and most parts of Visayas and Mindanao during the forecast period.

GEFS Week-1 Exceedance Prob. > 50mm
Valid: 20211028 - 20211103



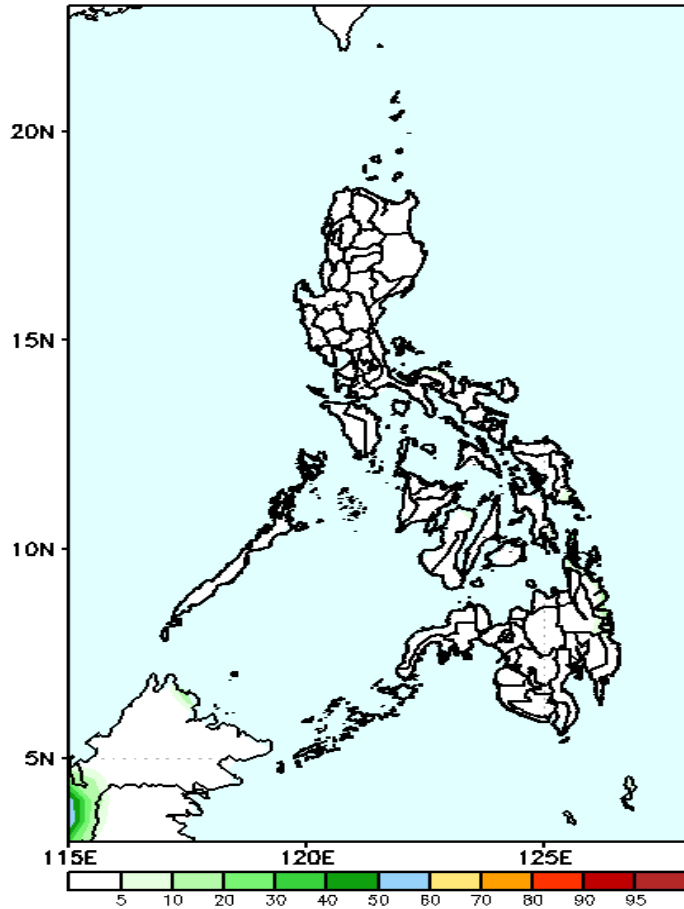
Low probability of rainfall to exceed 50mm in most parts of the country during the forecast period.



Exceedance Probability > 100/150/200 mm

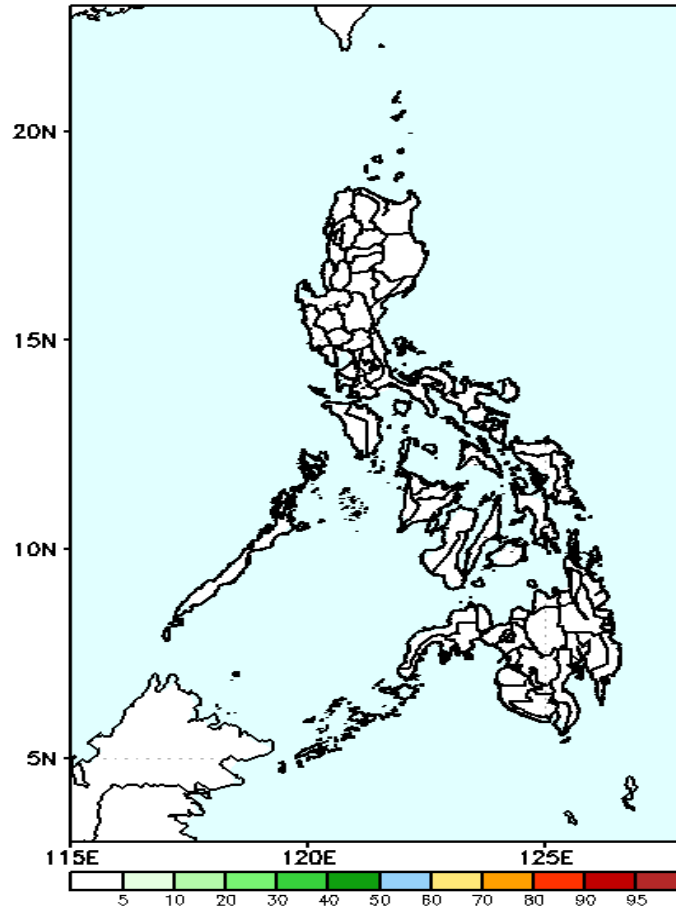
Week 1: Oct 28- Nov 03, 2021

GEFS Week-1 Exceedance Prob. > 100mm
Valid: 20211028 - 20211103



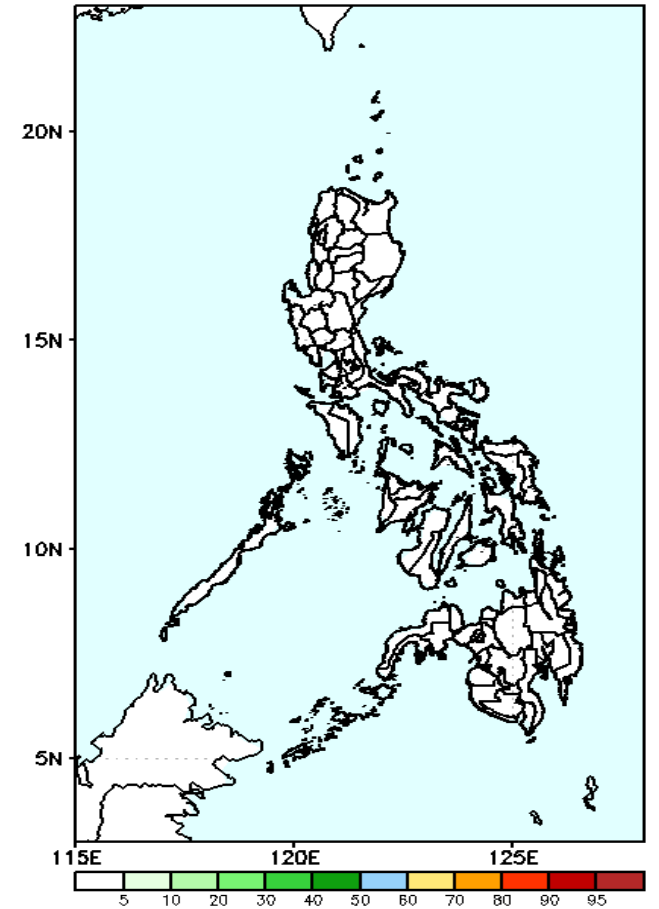
Less probability of rainfall to exceed 100mm in most parts of the country is expected during the forecast period.

GEFS Week-1 Exceedance Prob. > 150mm
Valid: 20211028 - 20211103



Less probability of rainfall to exceed 150mm in most parts of the country is expected during the forecast period.

GEFS Week-1 Exceedance Prob. > 200mm
Valid: 20211028 - 20211103



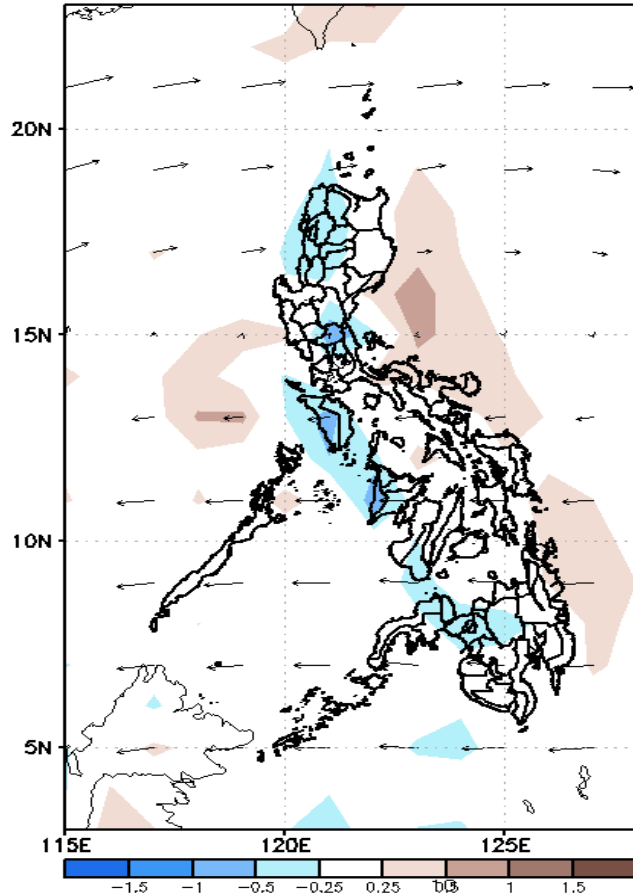
Less probability of rainfall to exceed 200mm in most parts of the country is expected during the forecast period.



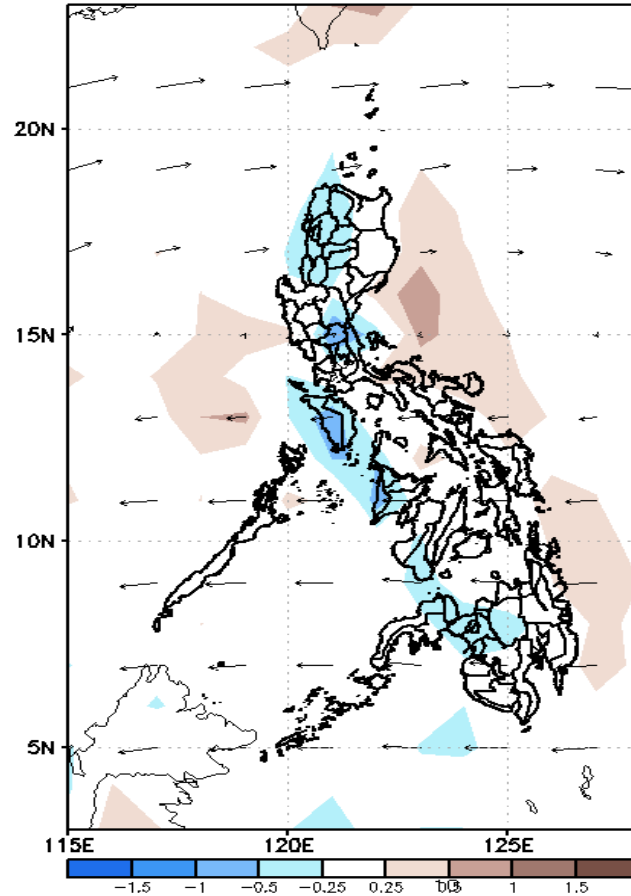
GEFS Week-2 Forecasts: Divergence & Wind Anomaly

Week 2: Nov 04-10, 2021

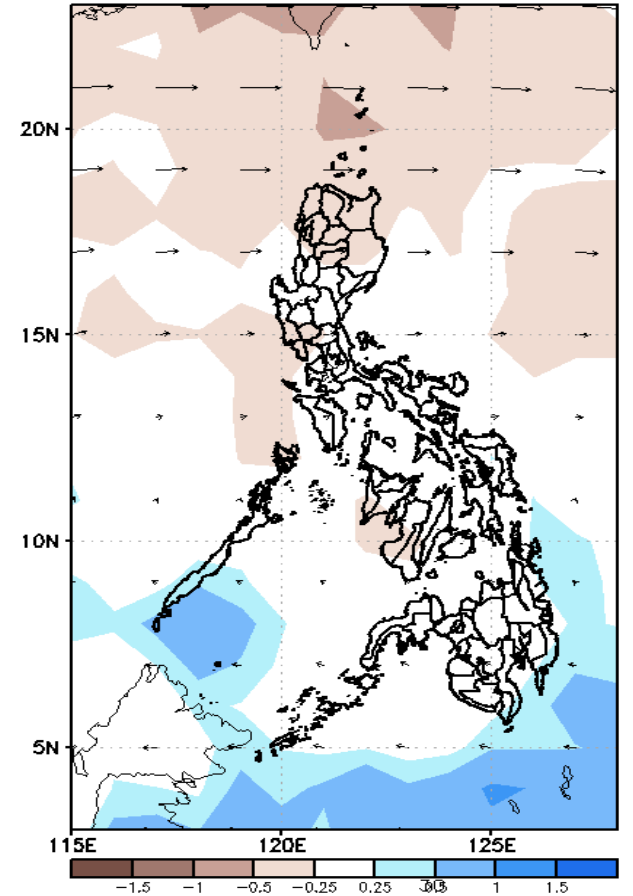
GEFS Week-2 850-hPa Divergence and Wind Anom
Valid: 20211104 - 20211110



GEFS Week-2 700-hPa Divergence and Wind Anom
Valid: 20211104 - 20211110



GEFS week-2 200-hPa Divergence and Wind Anom
Valid: 20211104 - 20211110

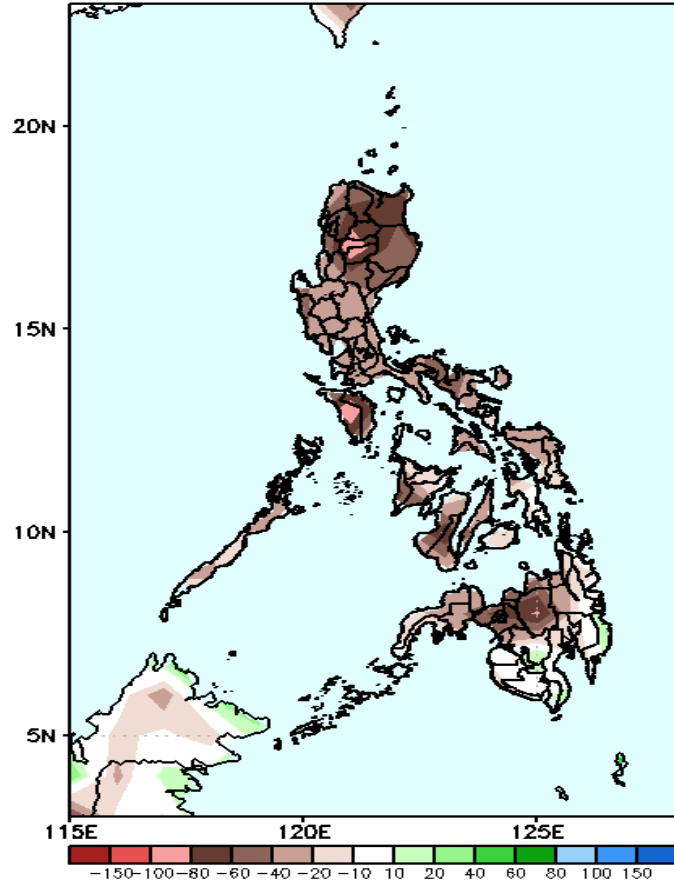


Upper and low level Divergence suggest likelihood of light precipitation in some parts of Luzon and Western Visayas. Easterlies affecting most parts of the country. Attributing to light to moderate rains due to thunderstorms during the forecast period.

Precipitation Anomaly and Exceedance Probability > 25/50 mm

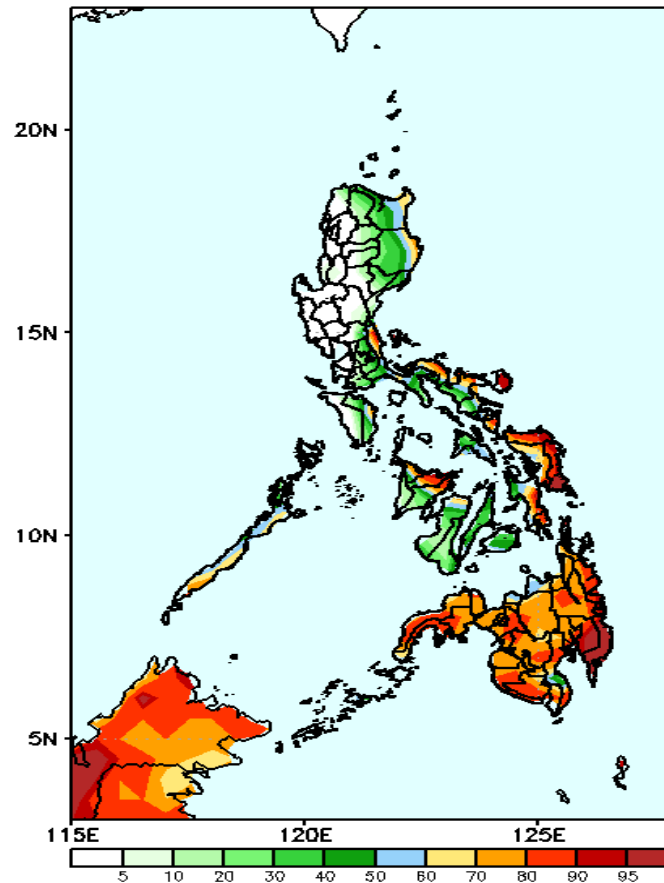
Week 2: Nov 04-10, 2021

GEFS Week-2 Precip Anomaly
Valid: 20211104 - 20211110



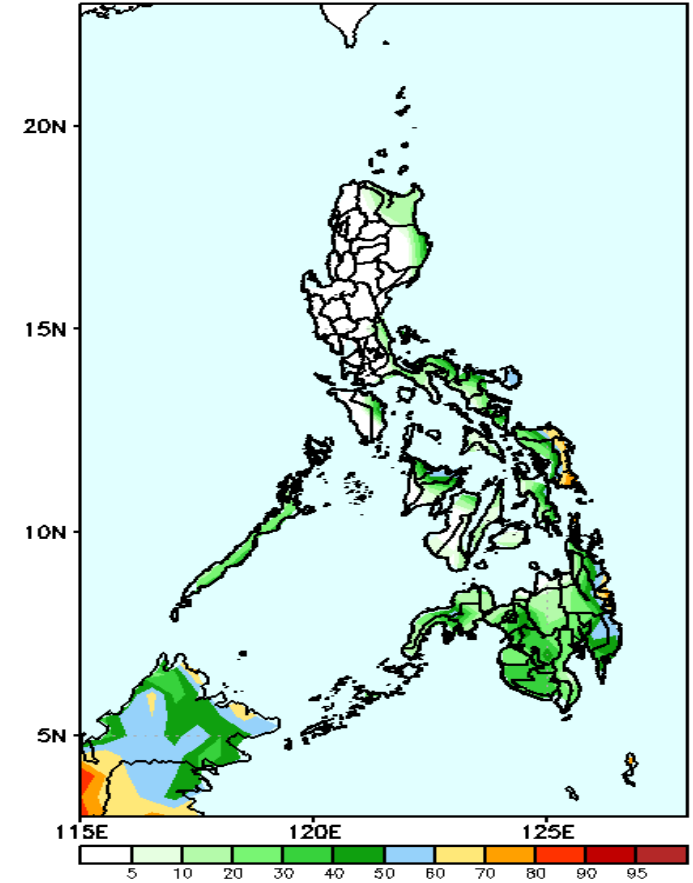
Rainfall deficit of 20-80mm in most parts of the country and up to 100mm in Cordillera Region & Occidental Mindoro during the forecast period.

GEFS Week-2 Exceedance Prob. > 25mm
Valid: 20211104 - 20211110



High probability of rainfall to exceed 25mm in some parts of Eastern Luzon, Eastern Visayas and most parts of Mindanao during the forecast period.

GEFS Week-2 Exceedance Prob. > 50mm
Valid: 20211104 - 20211110



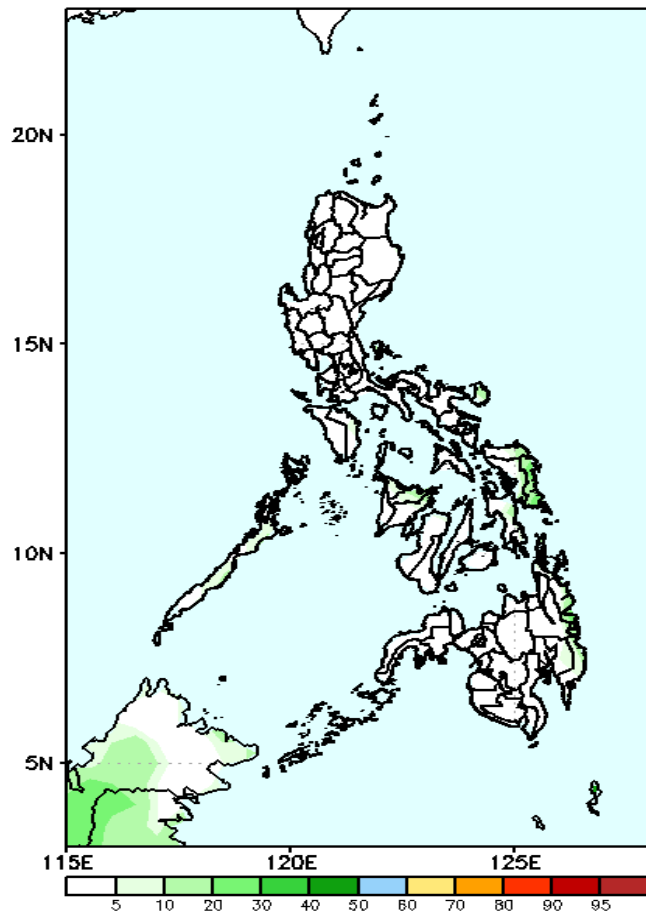
Less probability of rainfall to exceed 50mm in most parts of the country during the forecast period.



Exceedance Probability > 100/150/200 mm

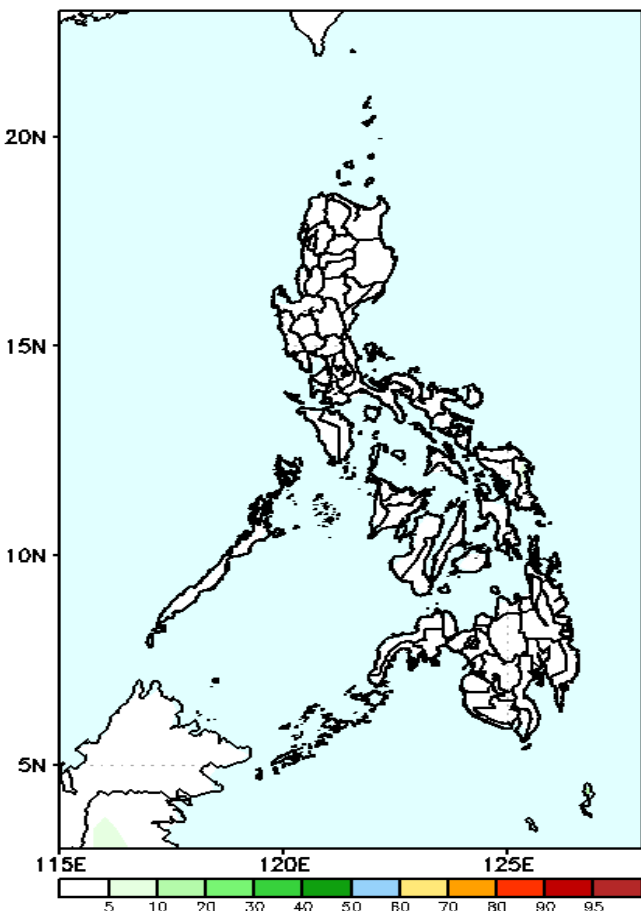
Week 2: Nov 04-10, 2021

GEFS Week-2 Exceedance Prob. > 100mm
Valid: 20211104 - 20211110



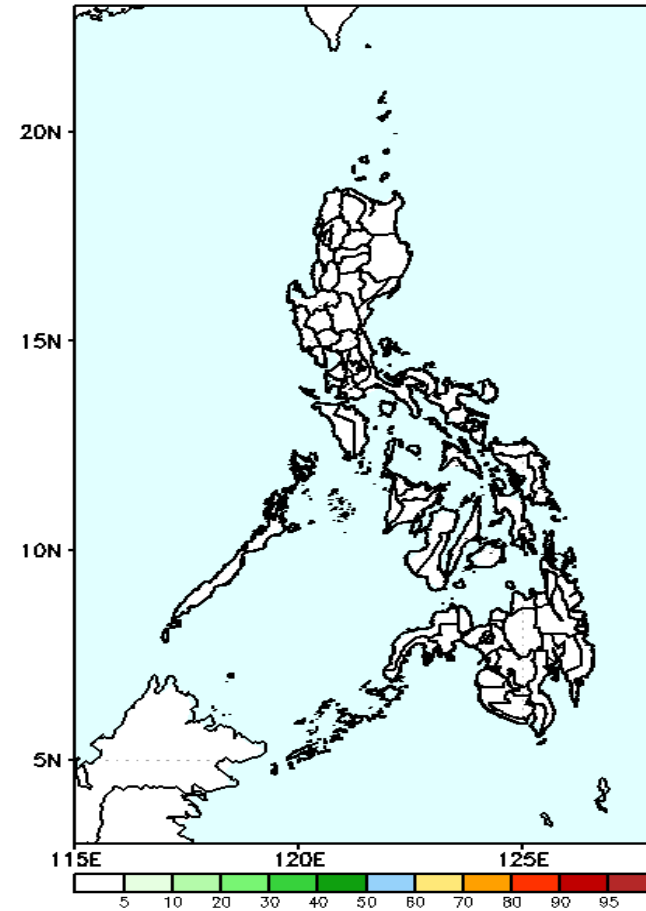
Less probability of rainfall to exceed 100mm in most parts of the country is expected during the forecast period.

GEFS Week-2 Exceedance Prob. > 150mm
Valid: 20211104 - 20211110



Less probability of rainfall to exceed 150mm in most parts of the country is expected during the forecast period.

GEFS Week-2 Exceedance Prob. > 200mm
Valid: 20211104 - 20211110

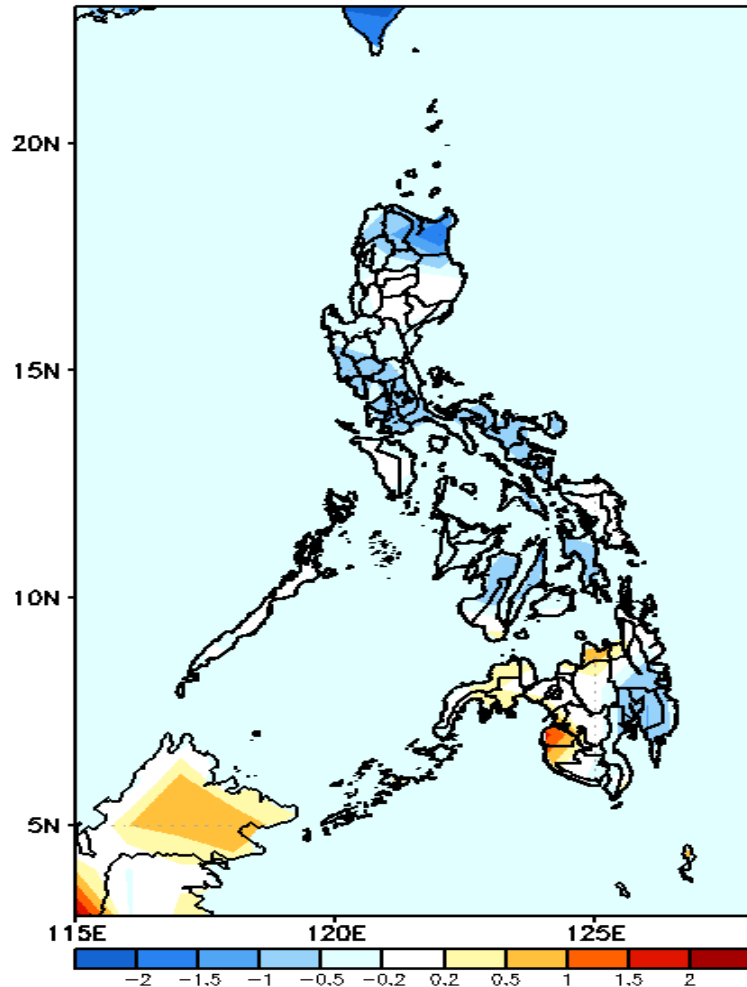


Less probability of rainfall to exceed 200mm in most parts of the country is expected during the forecast period.



GEFS Week-1 & 2 Forecasts: T2m Anomaly

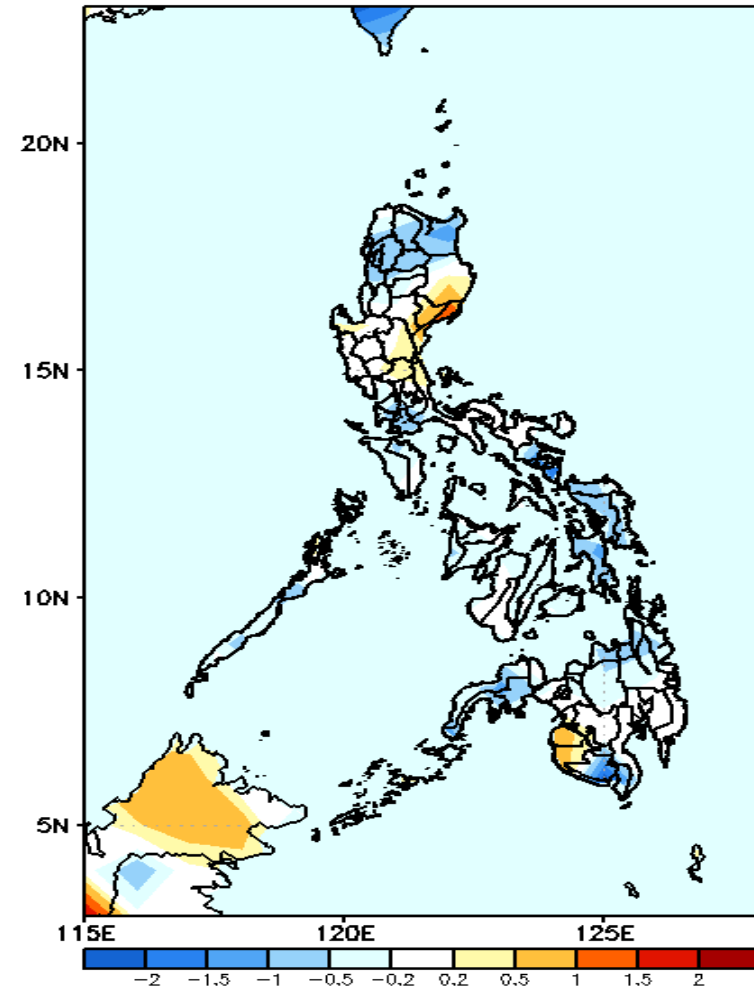
GEFS Week-1 T2m Anomaly
Valid: 20211028 - 20211103



2m Temperature Week 1: Oct 28- Nov 03, 2021

Average to slightly cooler surface air temperature will likely experience in most parts of the country except in Misamis Oriental & Maguindanao where slightly warmer temperature are expected during the forecast period.

GEFS Week-2 T2m Anomaly
Valid: 20211104 - 20211110



2m Temperature Week 2: Nov 04-10, 2021

Average to slightly cooler than average surface air temperature will likely experience in most parts of the country except in eastern part of Cagayan Valley where slightly warmer temperature are expected during the forecast period.