



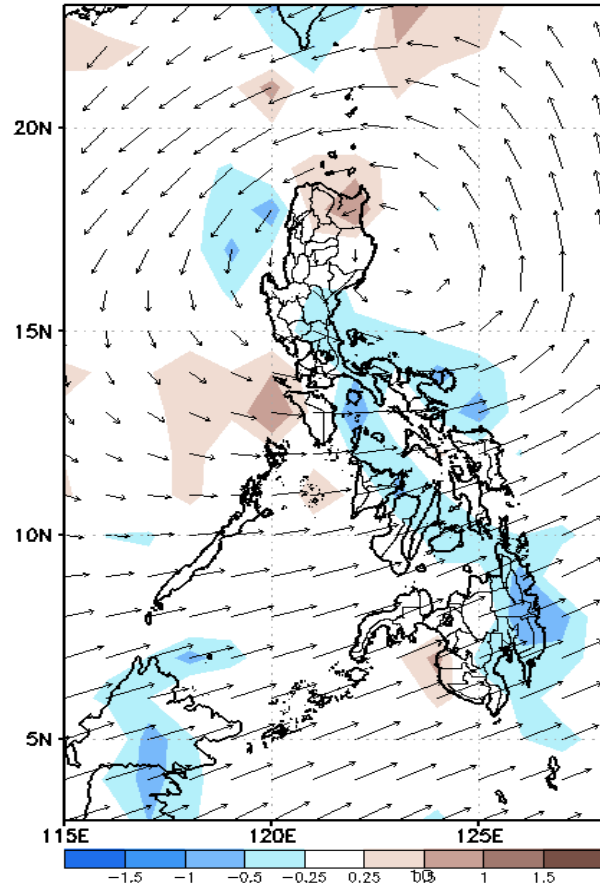
Week 1 & Week 2 Forecast for the Philippines using GEFS Model



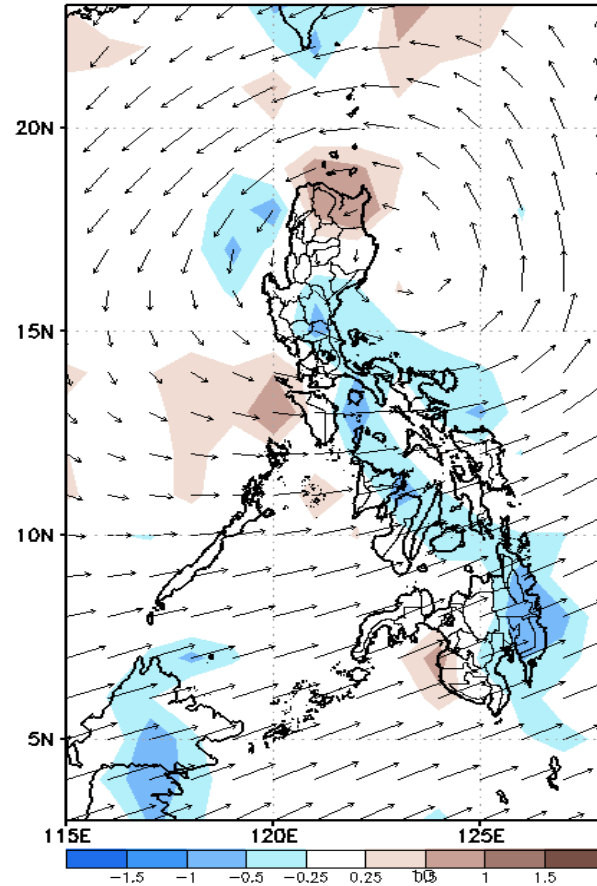
GEFS Week-1 Forecasts: Wind Anomaly Forecast

Week 1: Oct 28- Nov 03, 2022

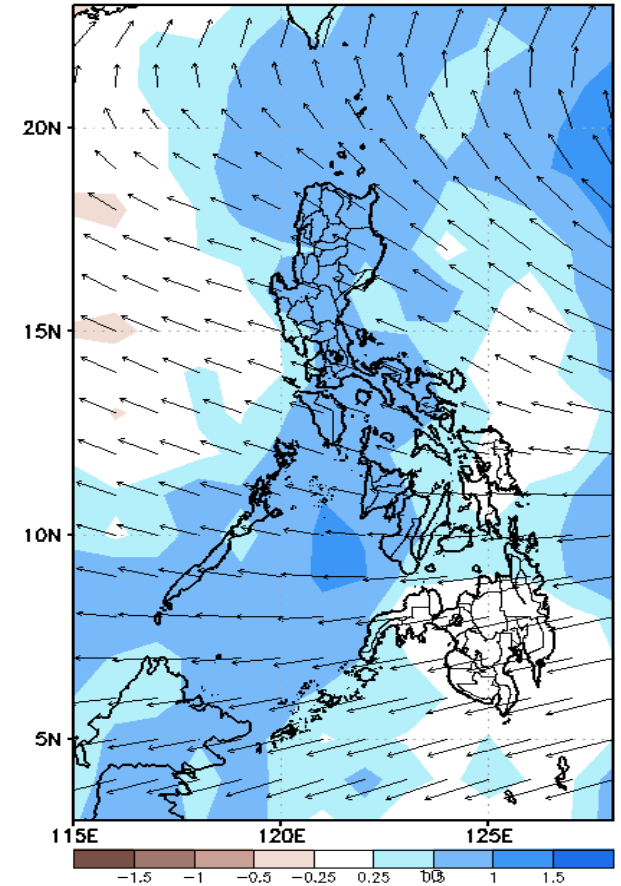
GEFS Week-1 850-hPa Divergence and Wind Anomc
Valid: 20221028 - 20221103



GEFS Week-1 700-hPa Divergence and Wind Anomc
Valid: 20221028 - 20221103



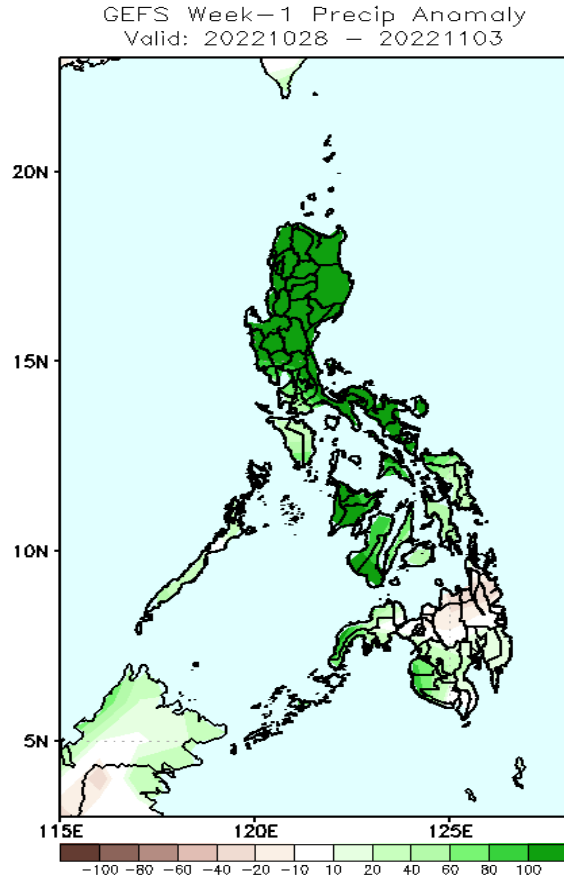
GEFS Week-1 200-hPa Divergence and Wind Anomc
Valid: 20221028 - 20221103



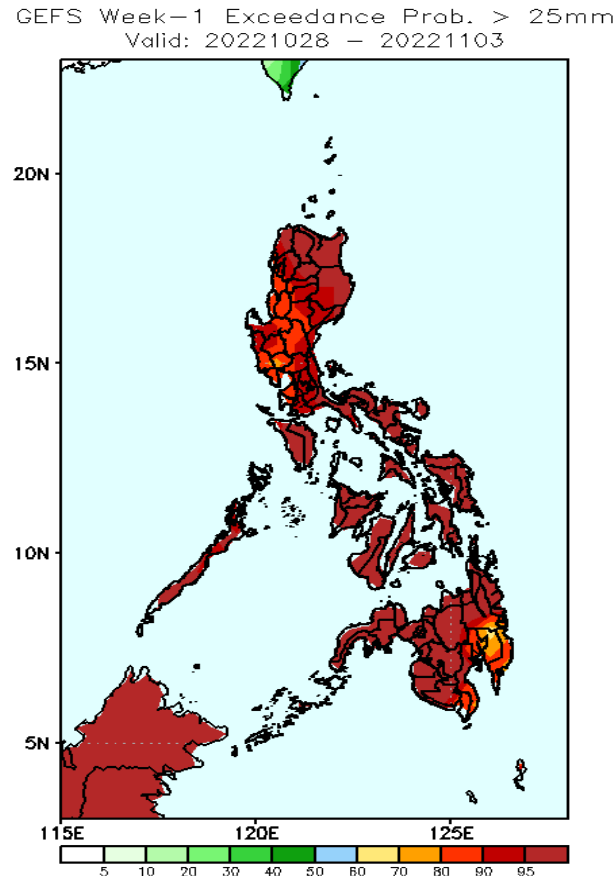
A cyclonic circulation affecting Luzon, Westerly winds affecting Visayas and Mindanao during the forecast period.

Precipitation Anomaly and Exceedance Probability > 25/50 mm

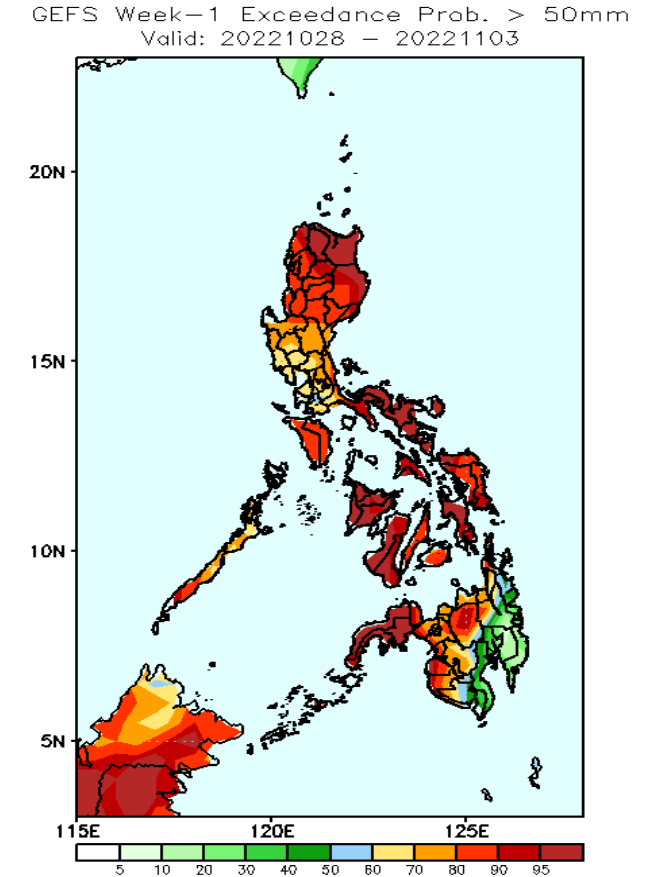
Week 1: Oct 28- Nov 03, 2022



Increase of rainfall of more than 100mm is expected in most parts of Luzon and Visayas and 40-80mm in southern & western Mindanao while 10-20mm rainfall deficit in northern Mindanao during the forecast period.



High probability of rainfall to exceed 25mm in most parts of the country during the forecast period.



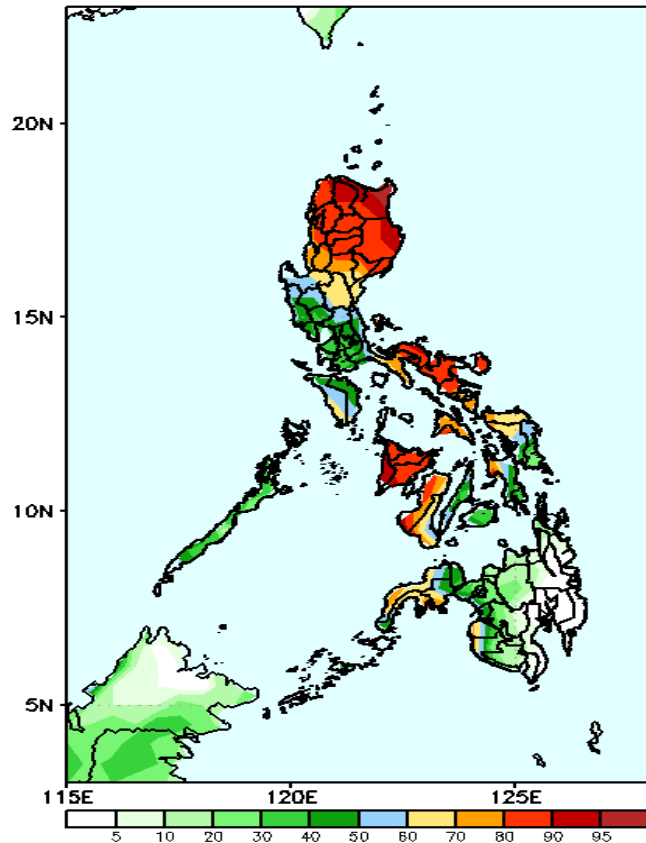
High probability of rainfall to exceed 50mm in most parts of the country except in some areas in eastern & southern Mindanao during the forecast period.



Exceedance Probability > 100/150/200 mm

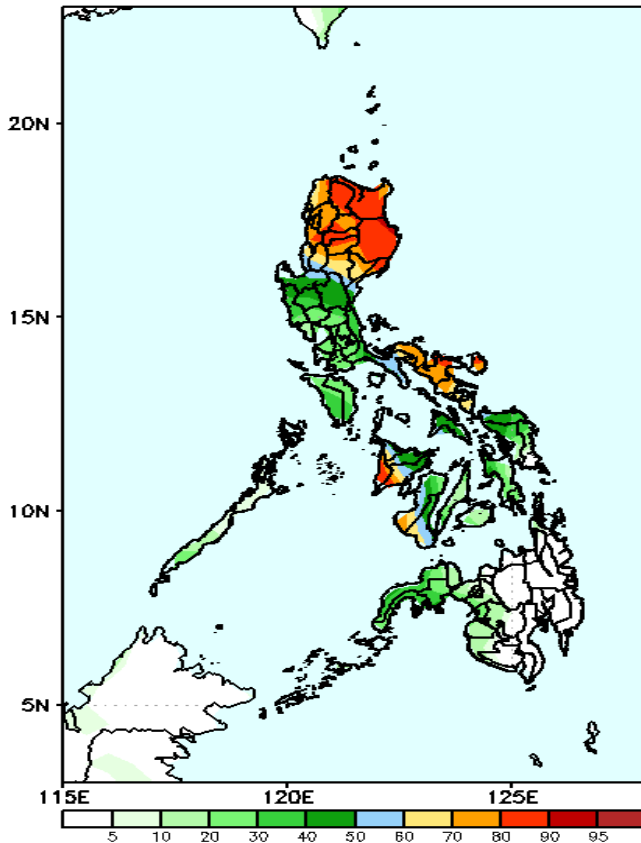
Week 1 Oct 28- Nov 03, 2022

GEFS Week-1 Exceedance Prob. > 100mm
Valid: 20221028 - 20221103



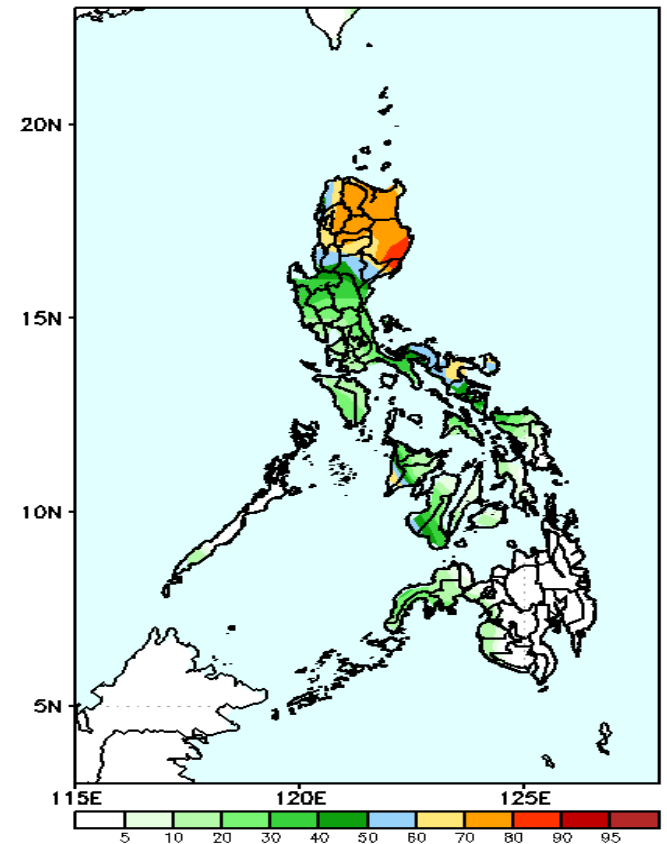
High probability of rainfall to exceed 100mm in Northern Luzon, Quezon province, Bicol Region, most parts of Visayas (except Bohol and Cebu) and some areas in western Mindanao while less likely for the rest of the country during the forecast period.

GEFS Week-1 Exceedance Prob. > 150mm
Valid: 20221028 - 20221103



High probability of rainfall to exceed 150mm in Northern Luzon, Bicol Region, western parts of Panay and Negros Island while less likely for the rest of the country during the forecast period.

GEFS Week-1 Exceedance Prob. > 200mm
Valid: 20221028 - 20221103



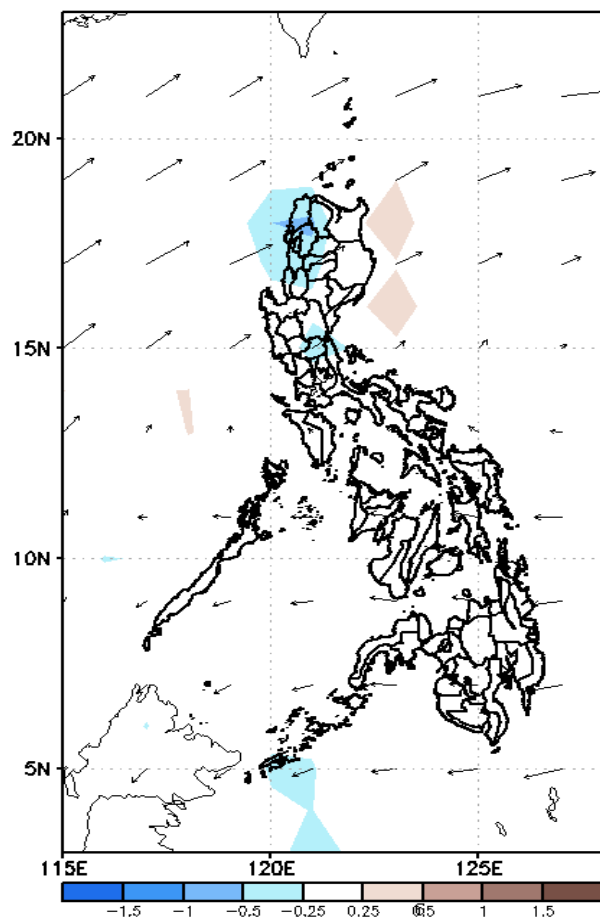
60-90% probability of rainfall to exceed 150mm in Northern Luzon while less likely for the rest of the country during the forecast period.



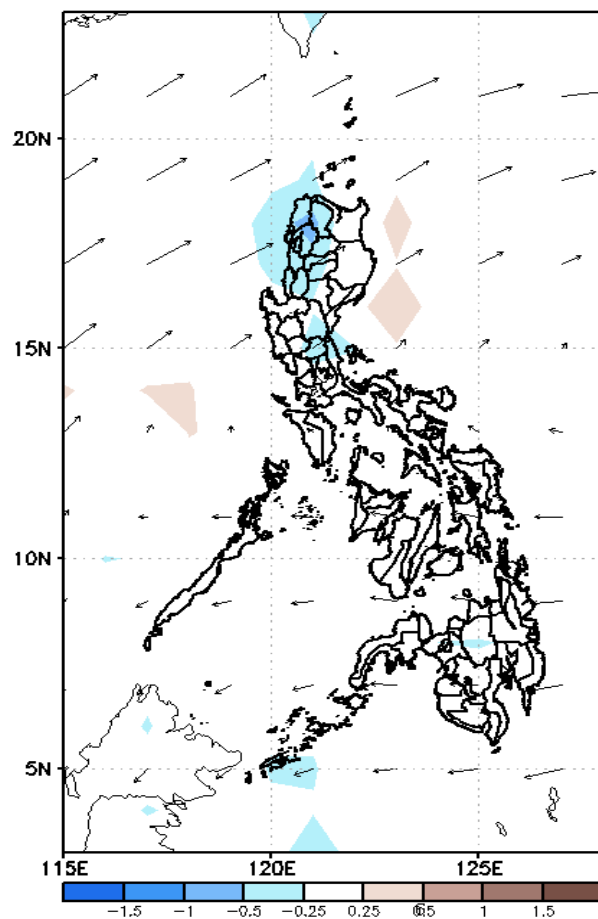
GEFS Week-2 Forecasts: Wind Anomaly Forecast

Week 2: Nov 04-10, 2022

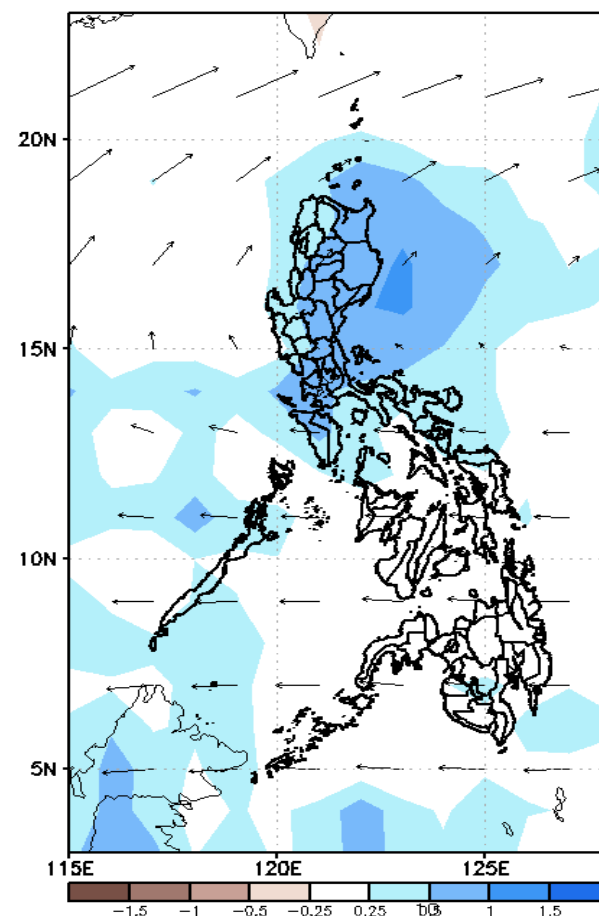
GEFS Week-2 850-hPa Divergence and Wind Anom
Valid: 20221104 - 20221110



GEFS Week-2 700-hPa Divergence and Wind Anom
Valid: 20221104 - 20221110



GEFS week-2 200-hPa Divergence and Wind Anom
Valid: 20221104 - 20221110

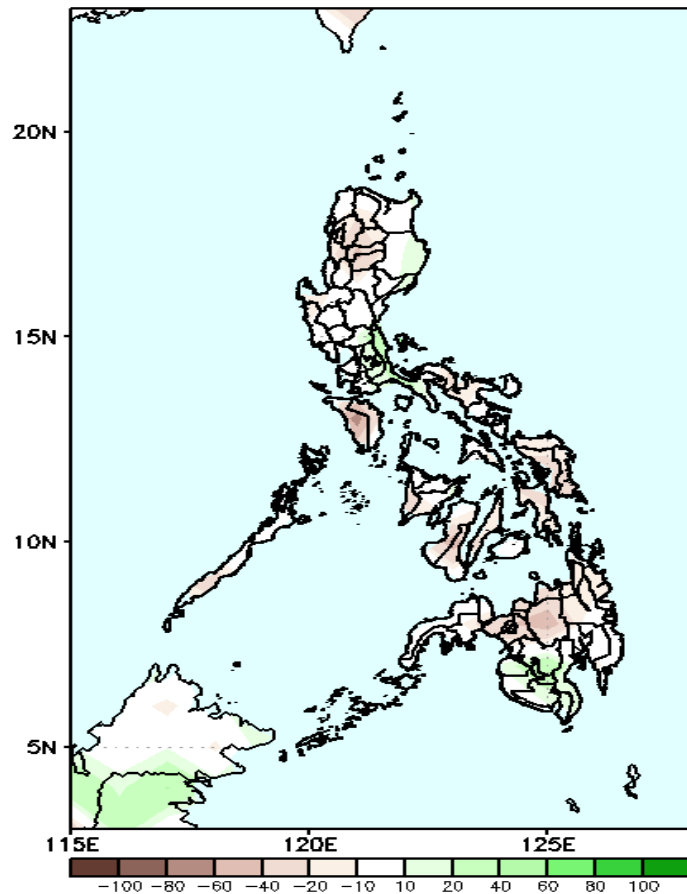


A cyclonic circulation is forecasted to affect Southern Luzon area, easterlies affecting Mindanao during the forecast period.

Precipitation Anomaly and Exceedance Probability > 25/50 mm

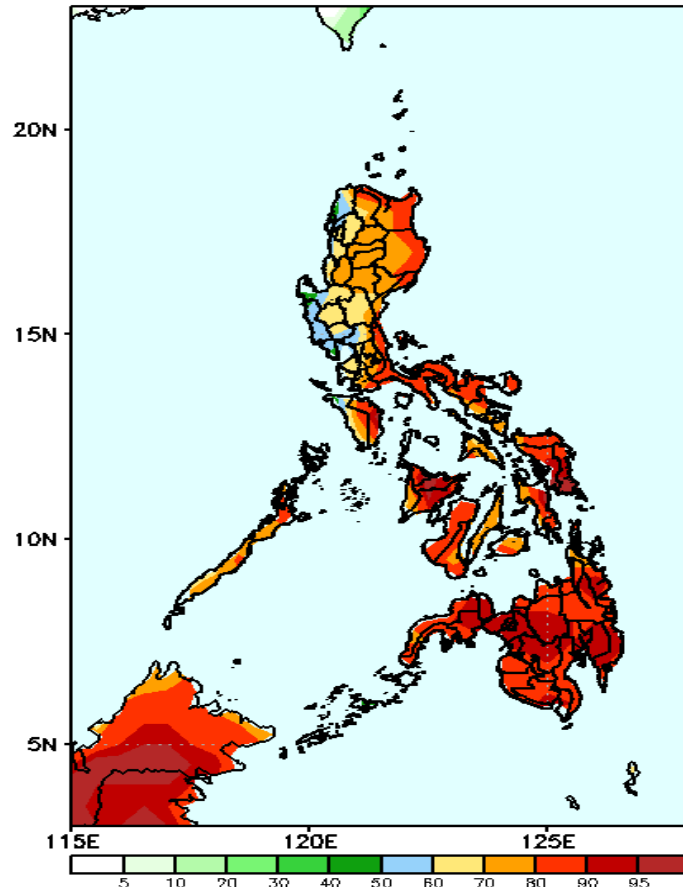
Week 2: Nov 04-10, 2022

GEFS Week-2 Precip Anomaly
Valid: 20221104 - 20221110



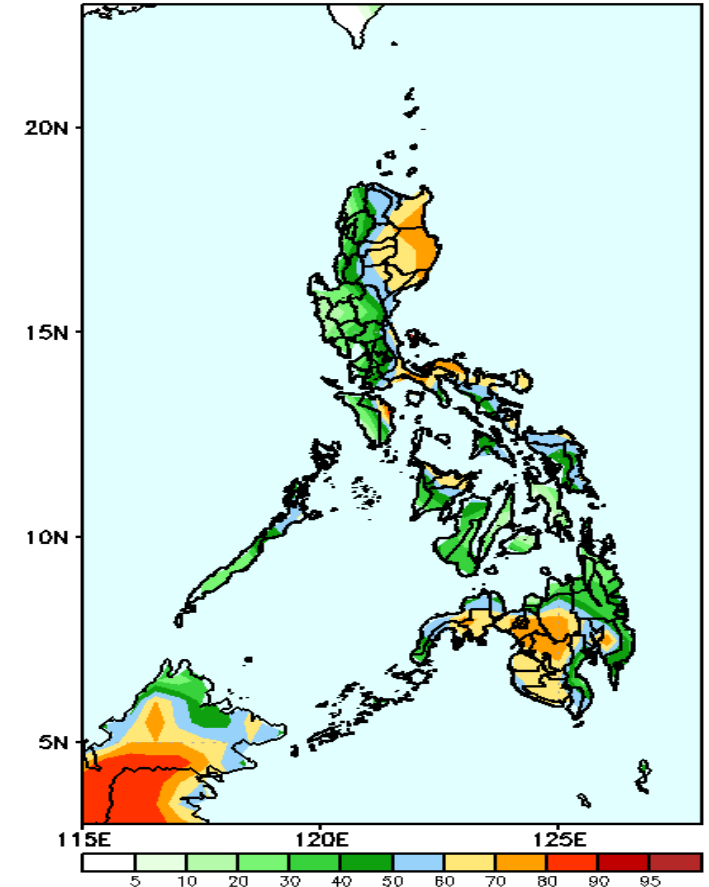
Rainfall deficit of 20-60mm is expected in most parts of the country during the forecast period.

GEFS Week-2 Exceedance Prob. > 25mm
Valid: 20221104 - 20221110



High probability of rainfall to exceed 25mm in most parts of the country during the forecast period.

GEFS Week-2 Exceedance Prob. > 50mm
Valid: 20221104 - 20221110

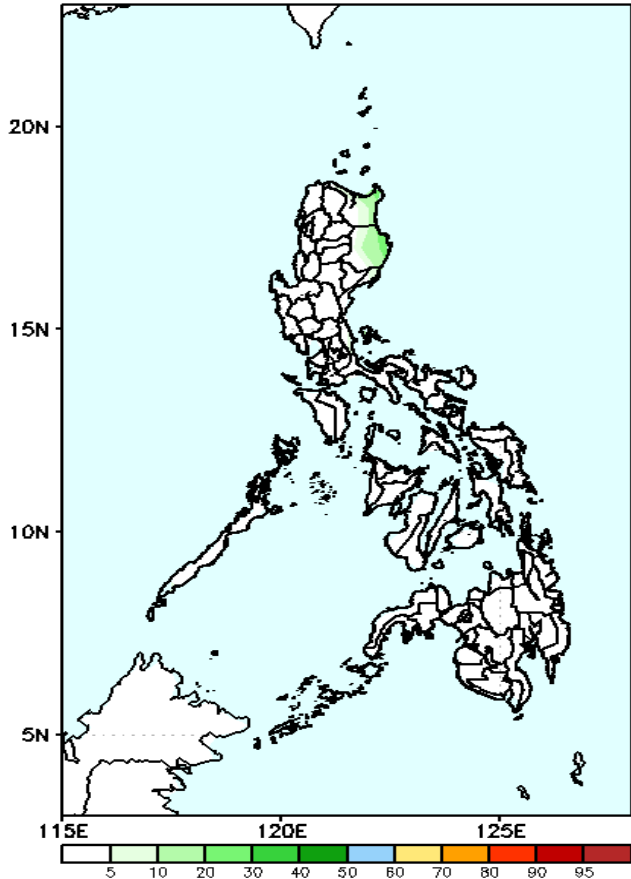


50-80% probability of rainfall to exceed 50mm in most parts of the country during the forecast period.

Exceedance Probability > 100/150/200 mm

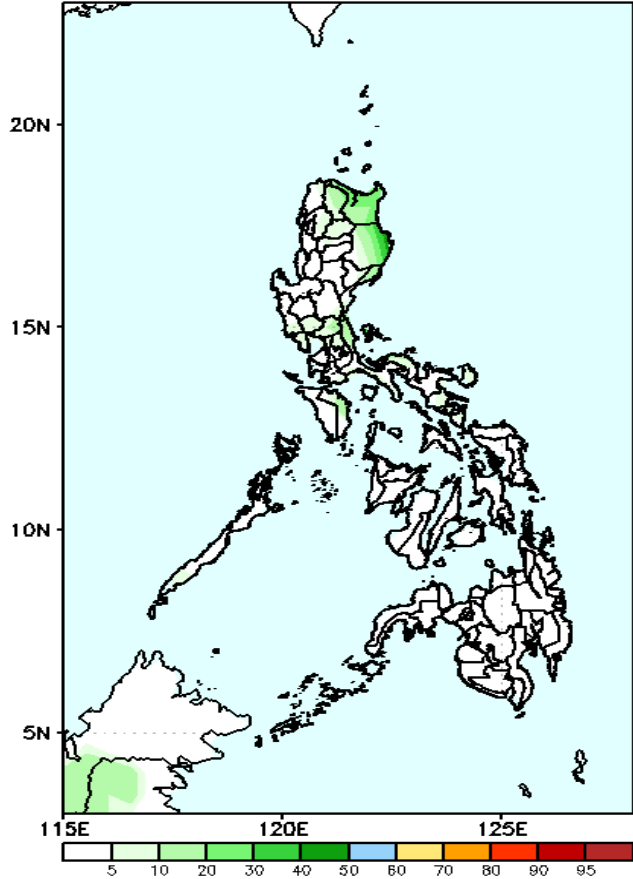
Week 2: Nov 04-10, 2022

GEFS Week-2 Exceedance Prob. > 200mm
Valid: 20221104 – 20221110



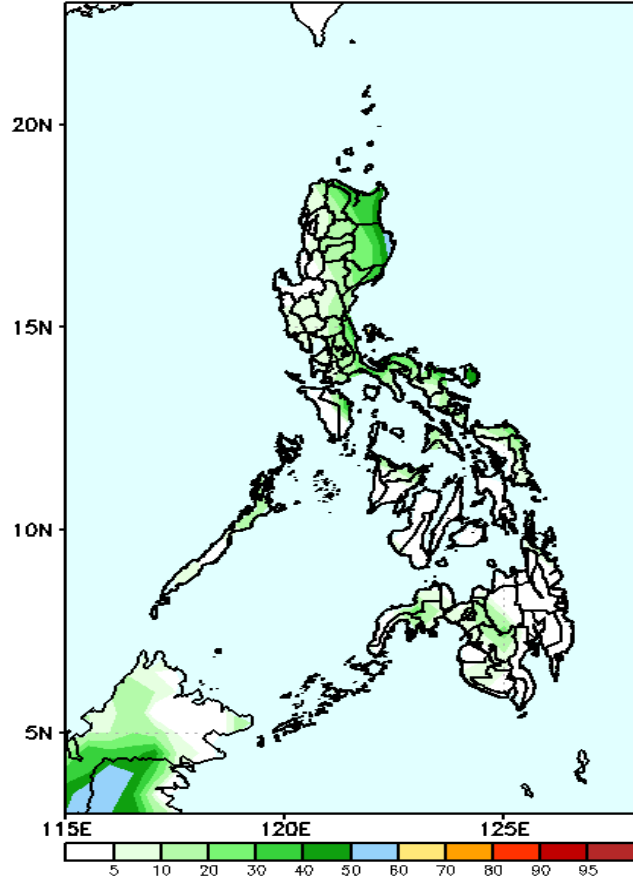
Low probability of rainfall to exceed 100mm in most parts of the country during the forecast period.

GEFS Week-2 Exceedance Prob. > 150mm
Valid: 20221104 – 20221110



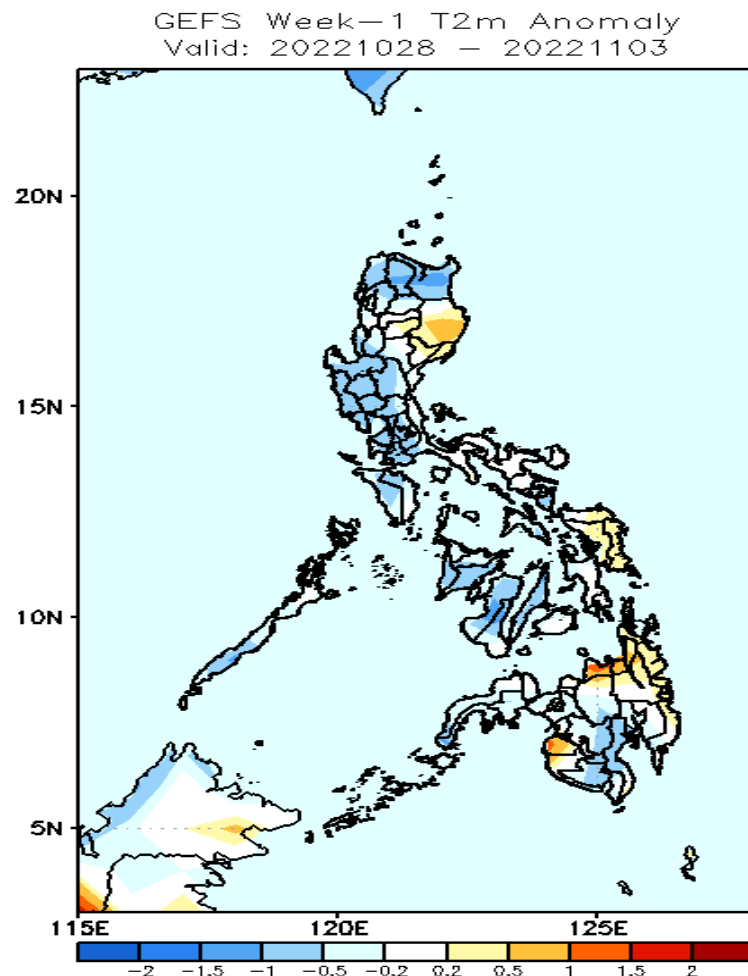
Low probability of rainfall to exceed 150mm in most parts of the country during the forecast period.

GEFS Week-2 Exceedance Prob. > 100mm
Valid: 20221104 – 20221110



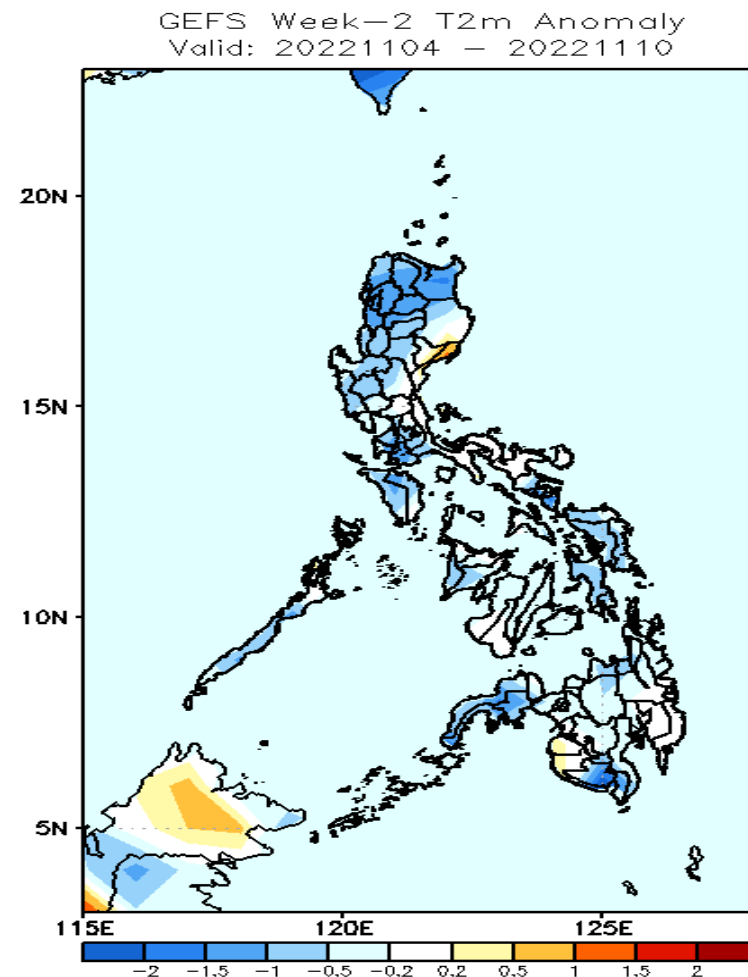
Low probability of rainfall to exceed 200mm in most parts of the country during the forecast period.

GEFS Week-1 & 2 Forecasts: T2m Anomaly



2m Temperature Week 1: Oct 28- Nov 03, 2022

Near to cooler than average surface air temperature will likely experience in most parts of the country except in Isabela, Samar provinces, Misamis Or., CARAGA Region and Maguindanao where slightly warmer to warmer than average surface air temperature is expected during the forecast period.



2m Temperature Week 2: Nov 04-10, 2022

Near to cooler than average surface air temperature will likely experience in most parts of the country during the forecast period.