



**USAID**  
FROM THE AMERICAN PEOPLE



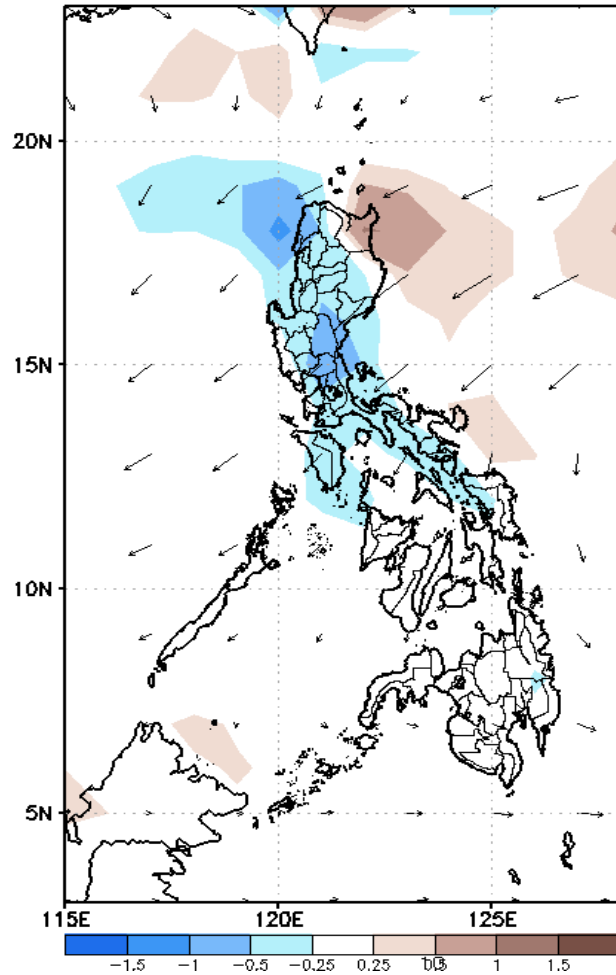
# Week 1 & Week 2 Forecast for the Philippines using GEFS Model



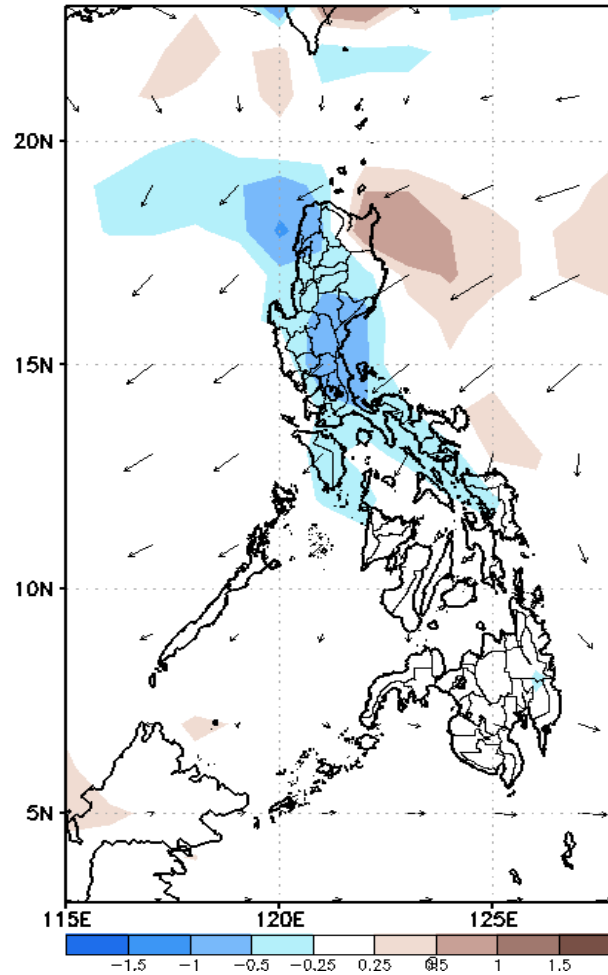
# GEFS Week-1 Forecasts: Divergence & Wind

Week 1: Nov 28-Dec 04, 2019

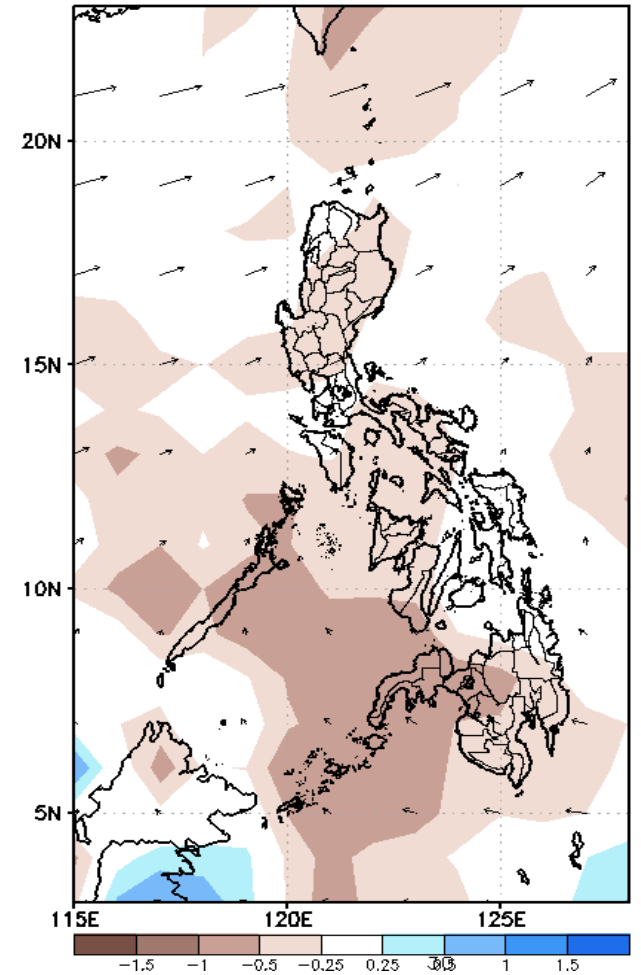
GEFS Week-1 850-hPa Divergence and Wind  
Valid: 20191128 - 20191204



GEFS Week-1 700-hPa Divergence and Wind  
Valid: 20191128 - 20191204



GEFS Week-1 200-hPa Divergence and Wind  
Valid: 20191128 - 20191204

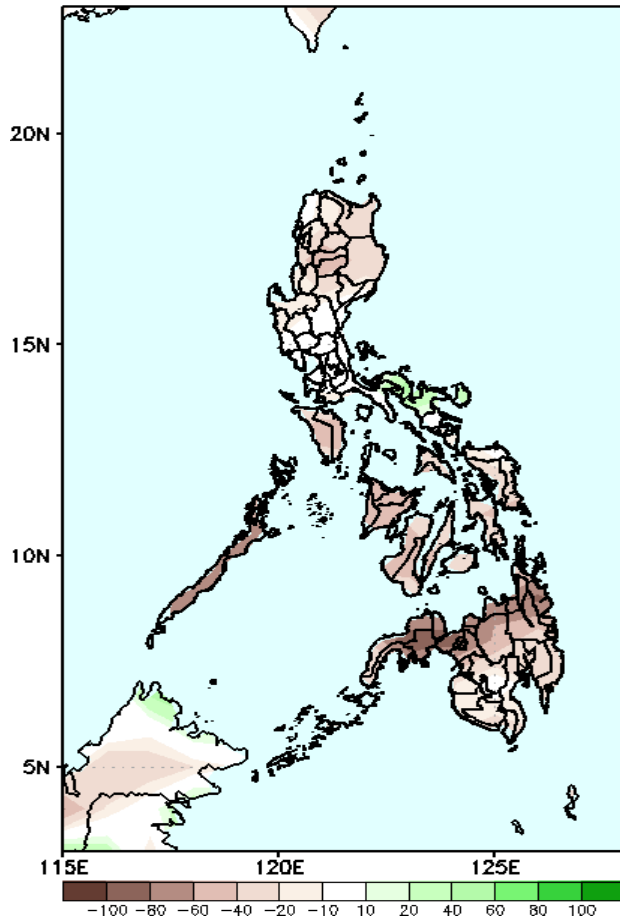


Low level (850 hPa) Divergence (Brown shaded color) suggest likelihood of heavy precipitation in northwestern and southern Luzon during the forecast period. Northwestern wind affecting most part of the country.

# Precipitation Anomaly and Exceedance Probability > 25/50 mm

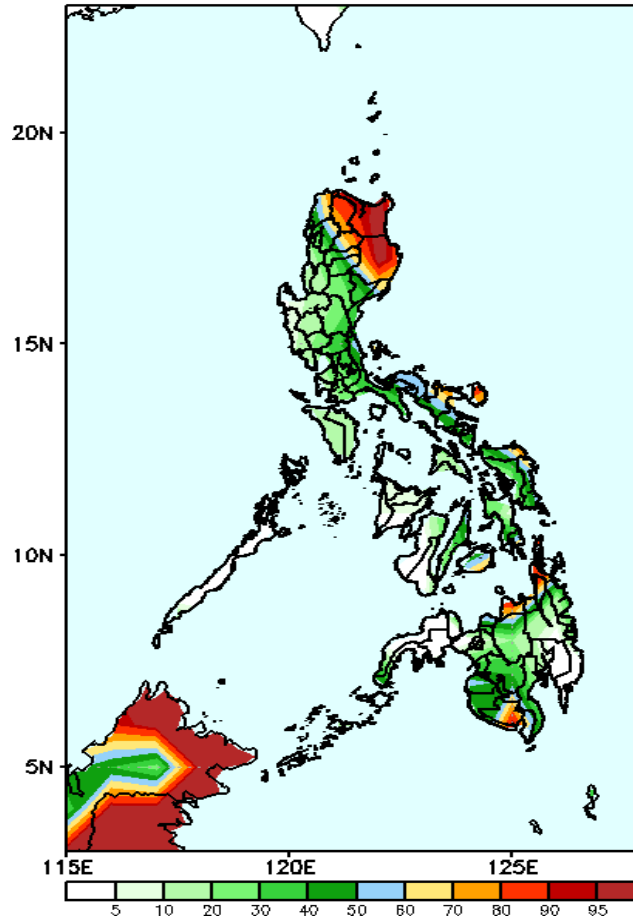
Week 1: Nov 28-Dec 04, 2019

GEFS Week-1 Precip Anomaly  
Valid: 20191128 - 20191204



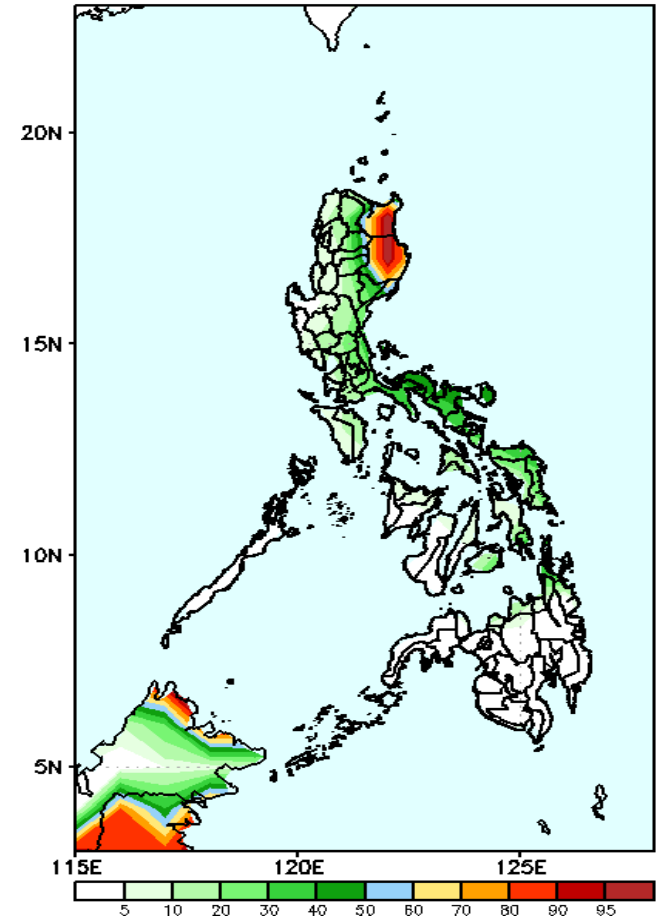
Most parts of the country will likely to have rainfall deficit of up to 100 mm.

GEFS Week-1 Exceedance Prob. > 25mm  
Valid: 20191128 - 20191204



High probabilities for rainfall exceeding 25mm in northeastern Luzon, Bicol Region, eastern parts of Mindanao and south Cotabato.

GEFS Week-1 Exceedance Prob. > 50mm  
Valid: 20191128 - 20191204

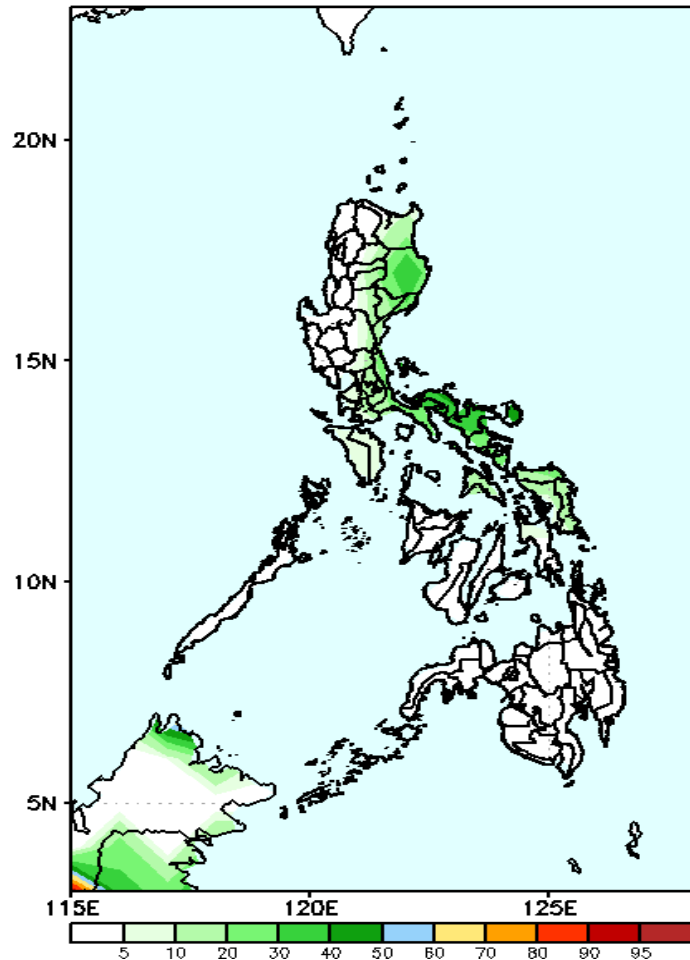


High probabilities for rainfall exceeding 50mm in northeastern Luzon while less likely for the rest of the country during the forecast period.

# Exceedance Probability > 100/150/200 mm

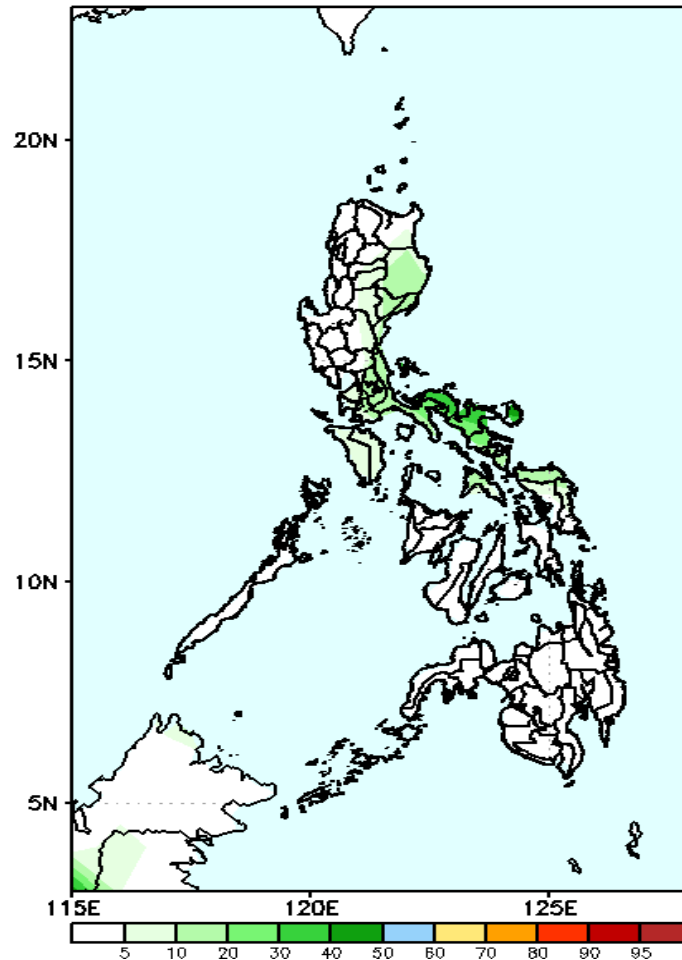
**Week 1: Nov 28- Dec 04, 2019**

GEFS Week-1 Exceedance Prob. > 100mm  
Valid: 20191128 - 20191204



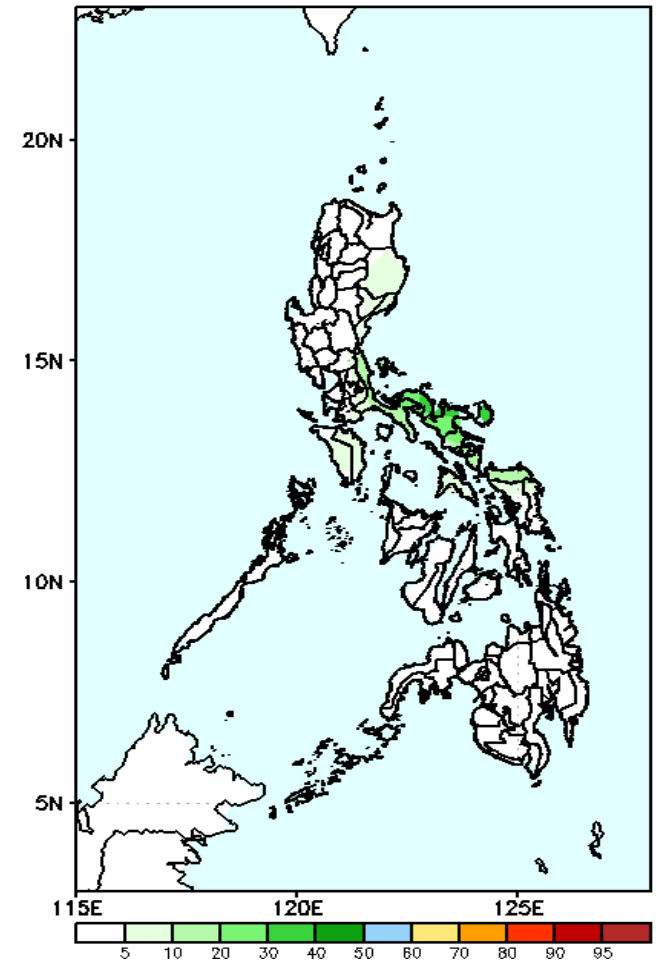
Less probabilities for rainfall exceeding 100mm in most parts of the country during the forecast period.

GEFS Week-1 Exceedance Prob. > 150mm  
Valid: 20191128 - 20191204



Less probability of rainfall to exceed 150mm in most parts of the country during the forecast period.

GEFS Week-1 Exceedance Prob. > 200mm  
Valid: 20191128 - 20191204



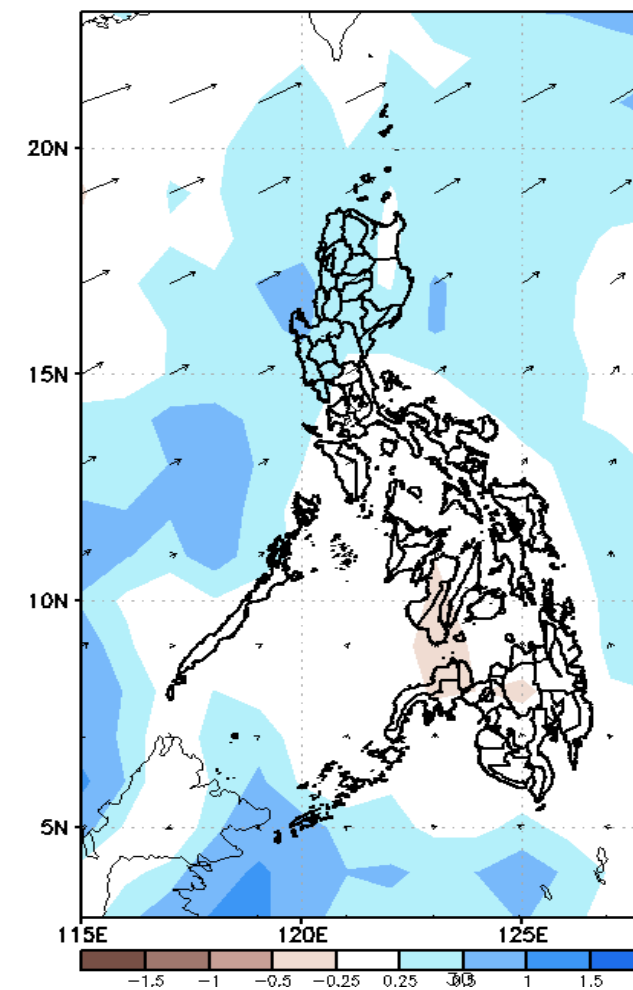
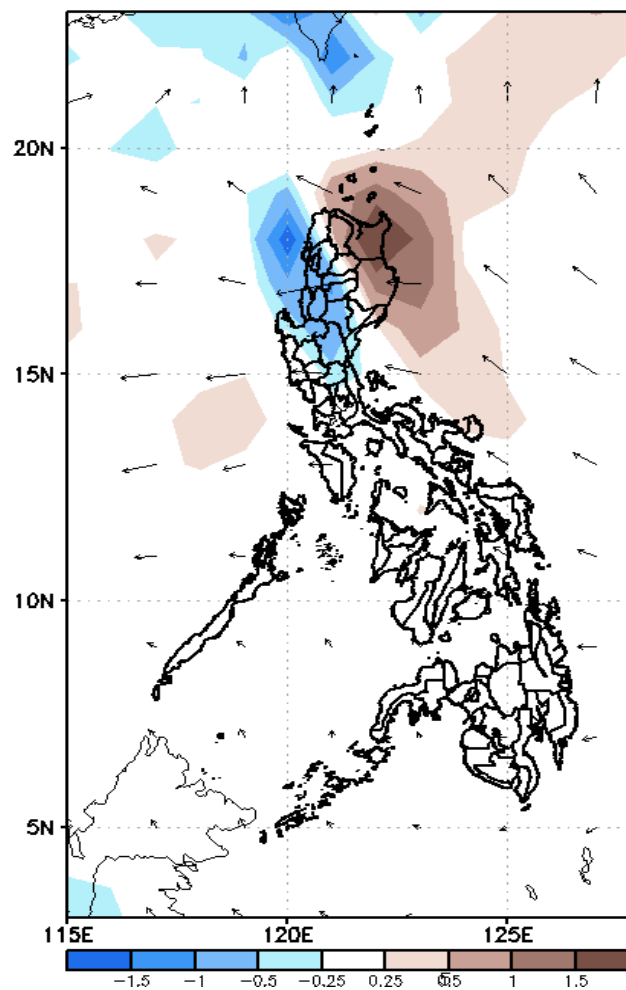
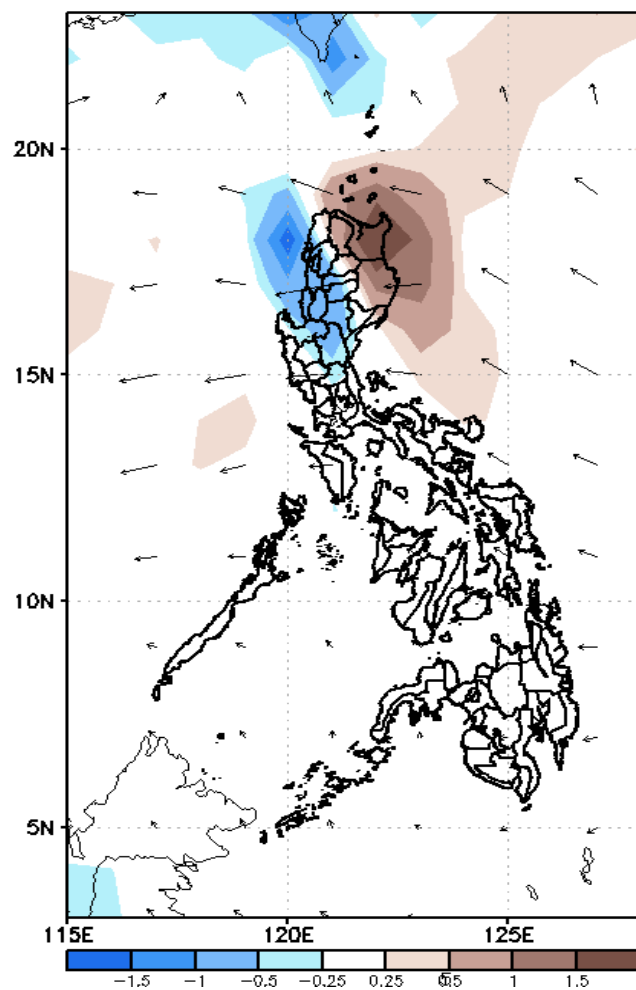
Less probability of rainfall to exceed 200 mm in most parts of the country during the forecast period.



# GEFS Week-2 Forecasts: Divergence & Wind

**Week 2: Dec 05-Dec 11, 2019**

GEFS Week-2 850-hPa Divergence and Wind    GEFS Week-2 700-hPa Divergence and Wind    GEFS week-2 200-hPa Divergence and Wind  
Valid: 20191205 – 20191211    Valid: 20191205 – 20191211    Valid: 20191205 – 20191211

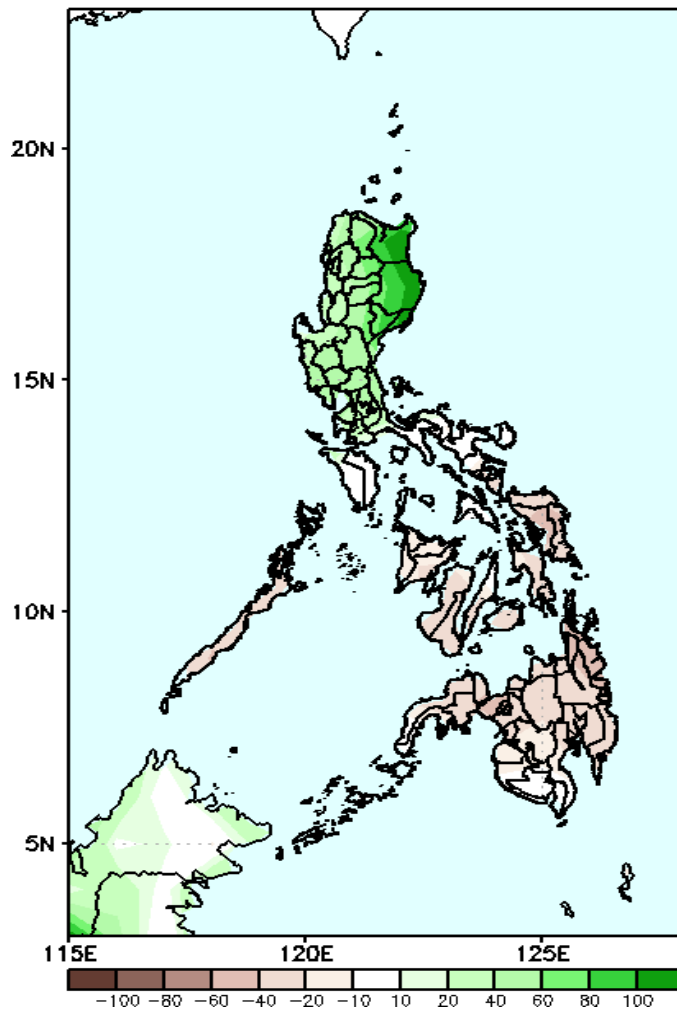


Low level (850 hPa) Divergence (Brown shaded color) suggest likelihood of heavy precipitation in northwestern Luzon. Moreover a cyclonic wind pattern is affecting most parts Luzon and Visayas during the forecast period.

# Precipitation Anomaly and Exceedance Probability > 25/50 mm

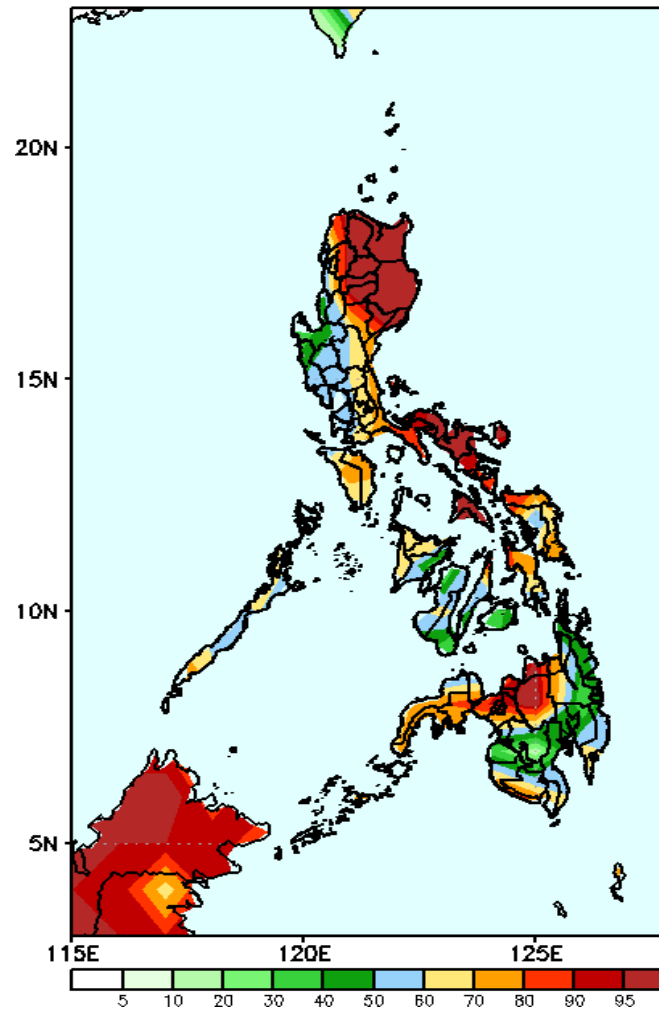
**Week 2: Dec 05-Dec 11, 2019**

GEFS Week-2 Precip Anomaly  
Valid: 20191205 - 20191211



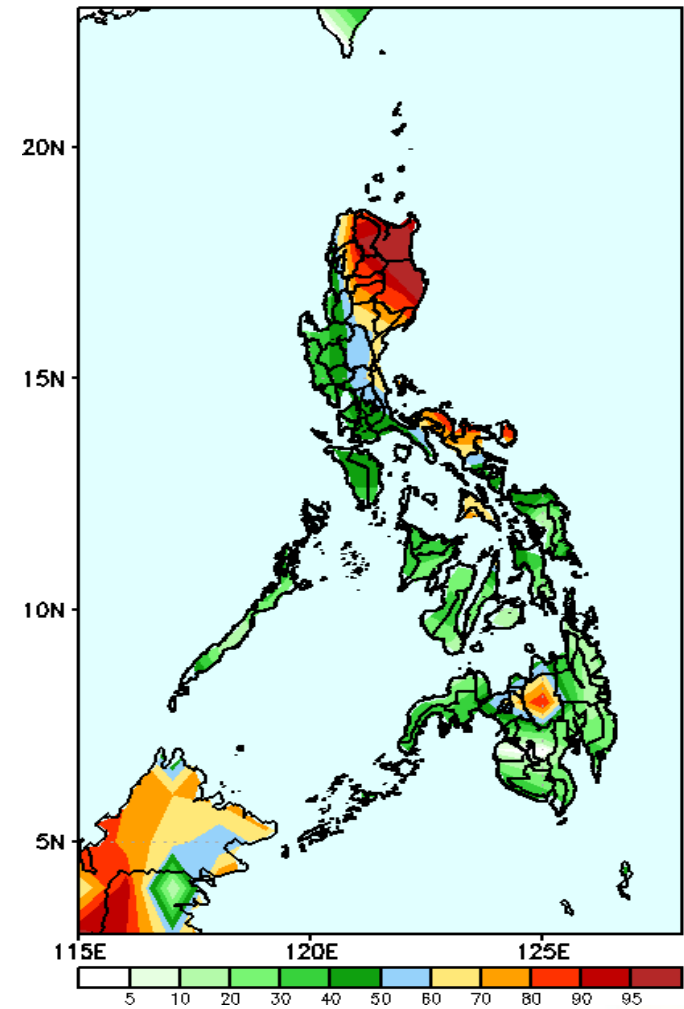
Above normal rainfall is likely in most parts of Luzon while a rainfall deficit of up to 100 mm for the rest of the country.

GEFS Week-2 Exceedance Prob. > 25mm  
Valid: 20191205 - 20191211



High probabilities for rainfall exceeding 25mm in most parts of the country during the forecast period, most especially in Luzon.

GEFS Week-2 Exceedance Prob. > 50mm  
Valid: 20191205 - 20191211



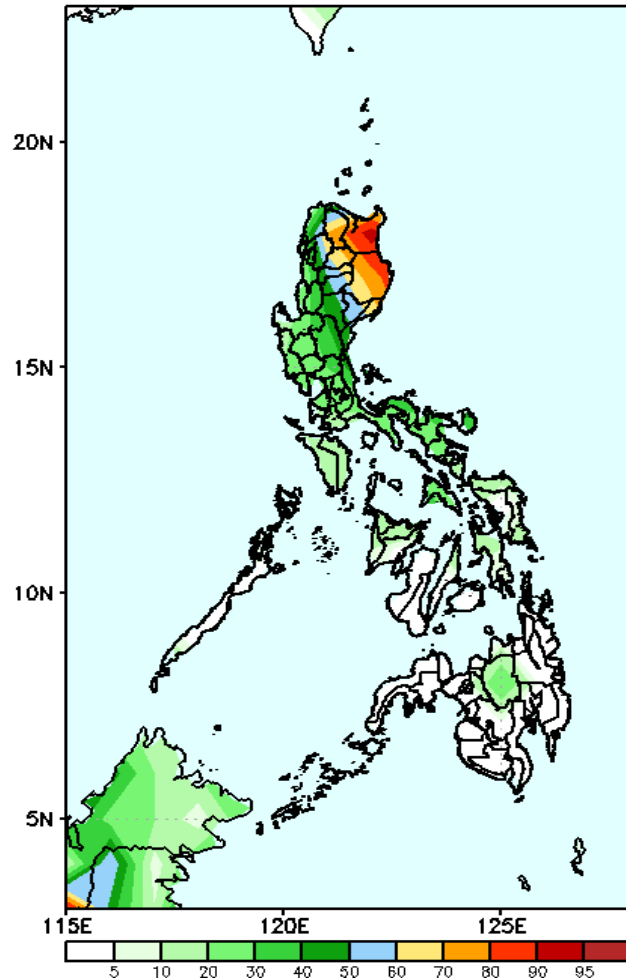
High probabilities for rainfall to exceed 50mm in northern, eastern and southern Luzon and Bukidnon while less likely for the rest of the country.



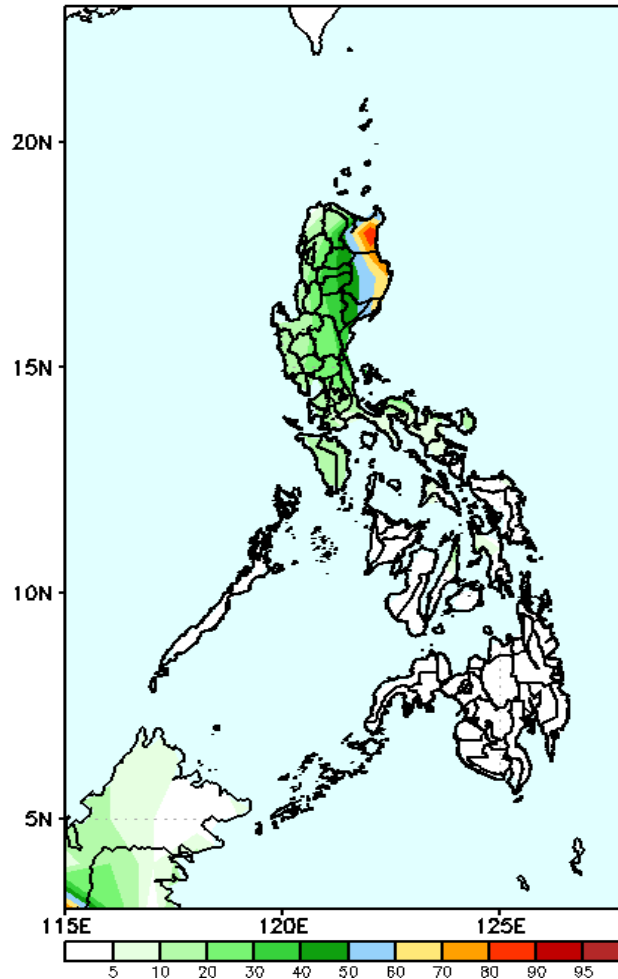
# Exceedance Probability > 100/150/200 mm

**Week 2: Dec 05-Dec 11, 2019**

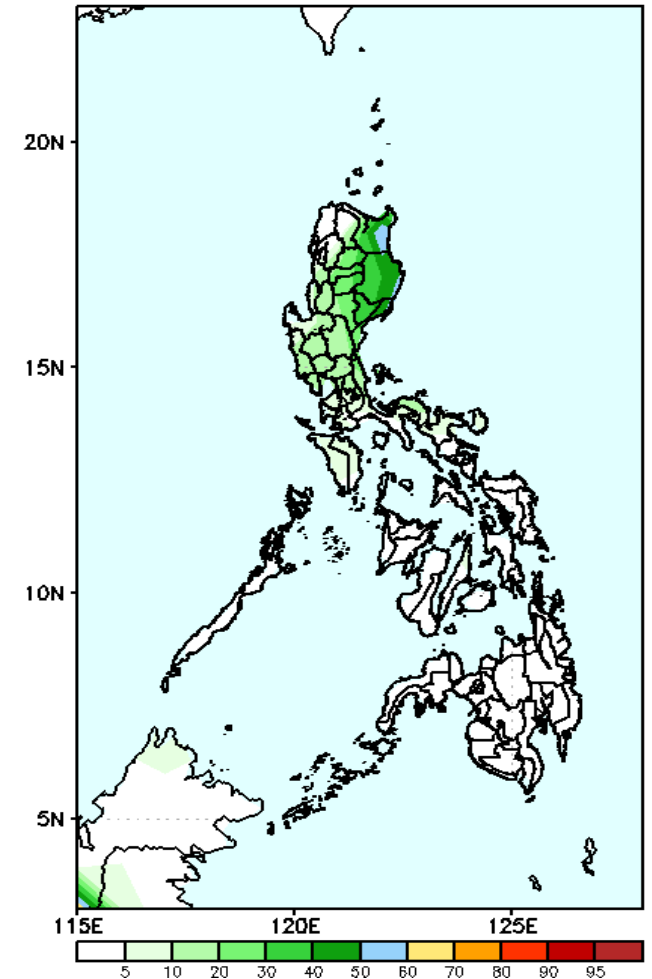
GEFS Week-2 Exceedance Prob. > 100mm  
Valid: 20191205 – 20191211



GEFS Week-2 Exceedance Prob. > 150mm  
Valid: 20191205 – 20191211



GEFS Week-2 Exceedance Prob. > 200mm  
Valid: 20191205 – 20191211



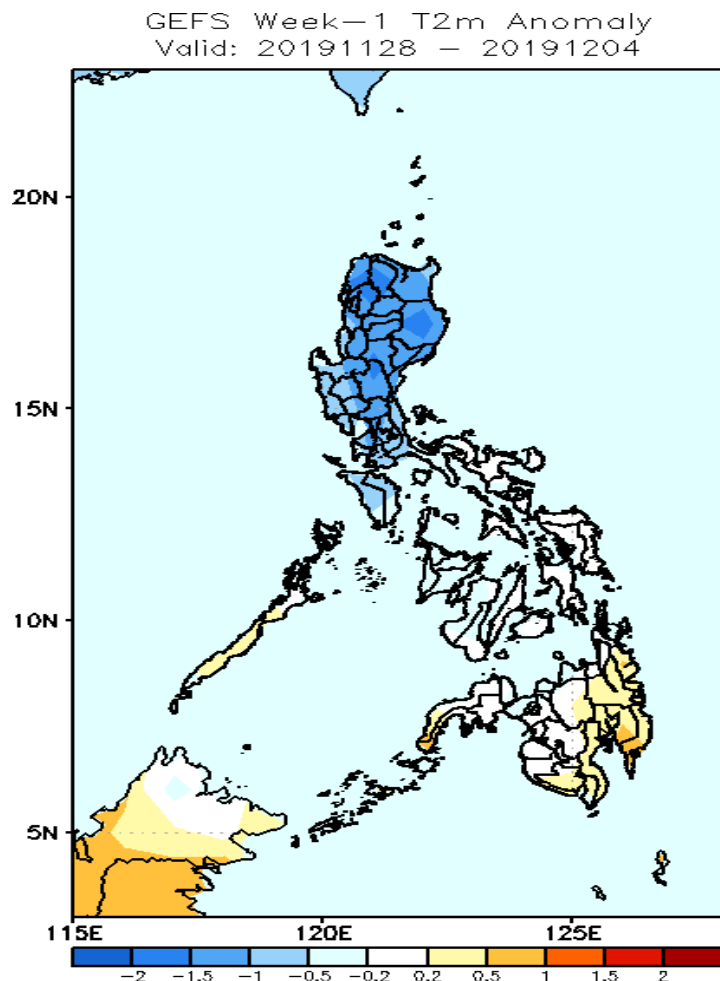
High probabilities for rainfall to exceed 100mm in northern Luzon while less likely for the rest of the country.

High probabilities for rainfall to exceed 100mm in Cagayan and Isabela while less likely for the rest of the country.

Less probability of rainfall to exceed 200 mm in most parts of the country during the forecast period.

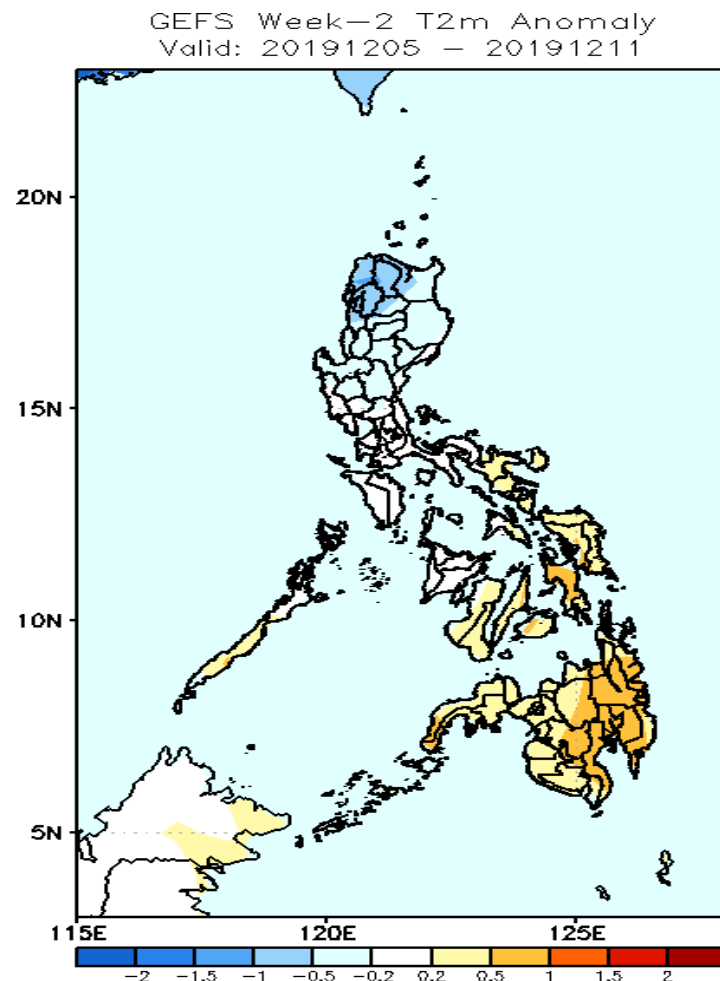


# GEFS Week-1 & 2 Forecasts: T2m Anomaly



## 2m Temperature Week1 (Nov 28-Dec 04, 2019)

Slightly cooler to cooler than average surface air temperature will likely experience in most parts of Luzon while slightly warmer than normal for the rest of the country.



## 2m Temperature Week 2: Dec 05-Dec 11, 2019

Cooler to slightly cooler surface air temperature are expected in Luzon while the rest of the country will likely experience slightly warmer than average temperature.