



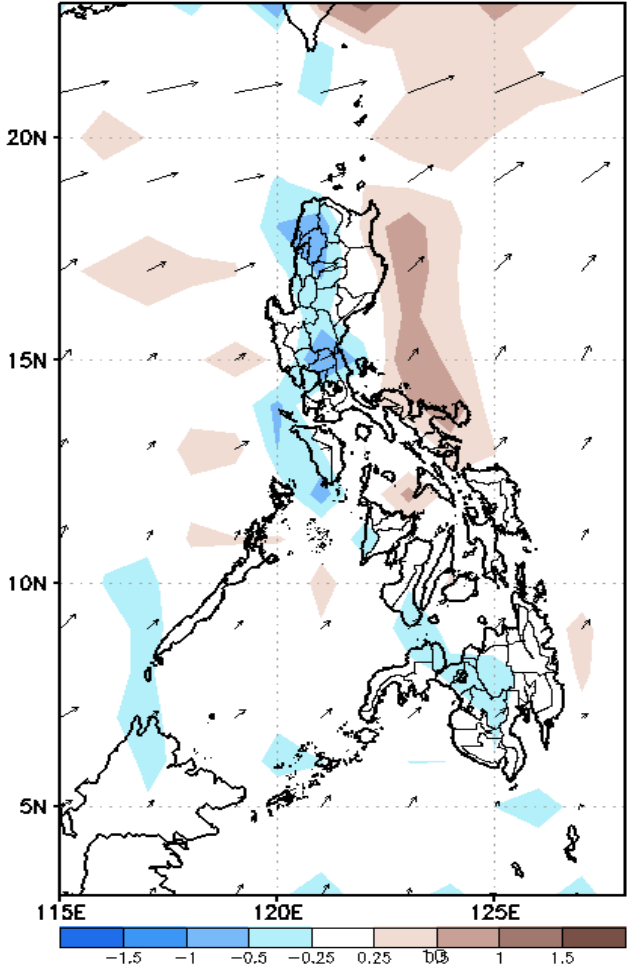
# Week 1 & Week 2 Forecast for the Philippines using GEFS Model



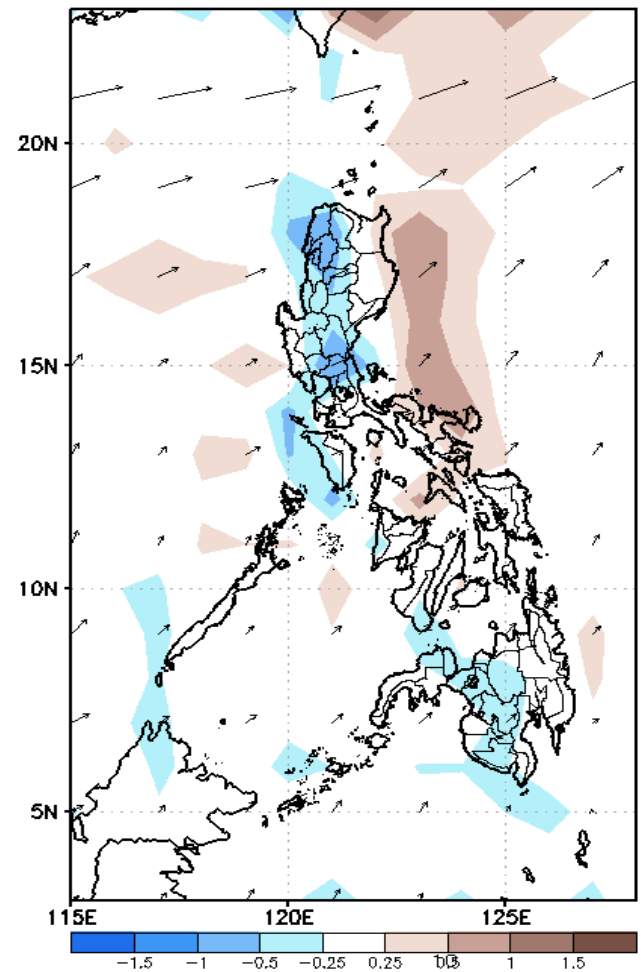
# GEFS Week-1 Forecasts: Divergence & Wind Anomaly

**Week 1: Dec 28, 2020-Jan 3, 2021**

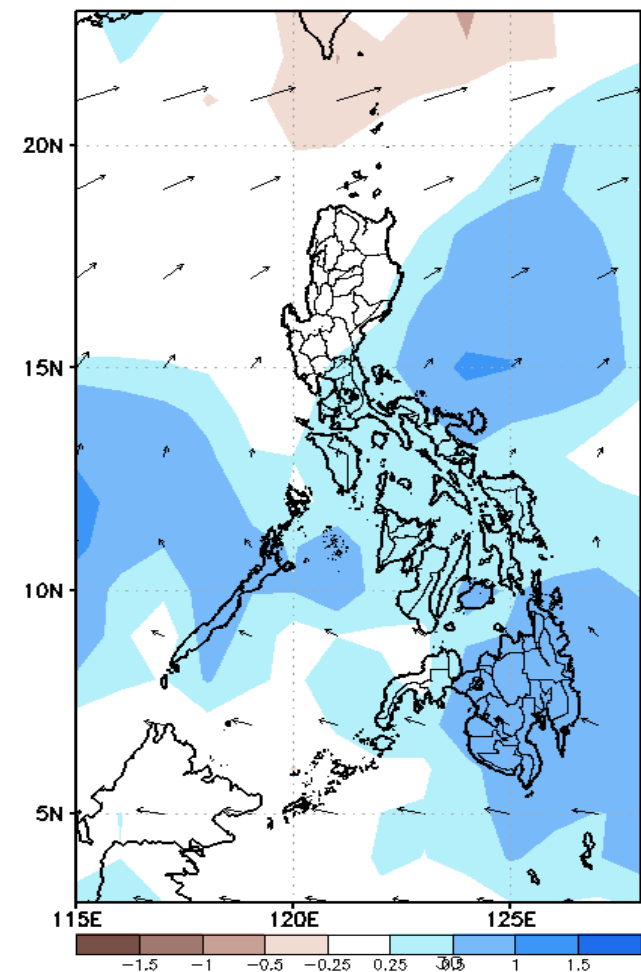
GEFS Week-1 850-hPa Divergence and Wind Anom  
Valid: 20201228 - 20210103



GEFS Week-1 700-hPa Divergence and Wind Anom  
Valid: 20201228 - 20210103



GEFS Week-1 200-hPa Divergence and Wind Anom  
Valid: 20201228 - 20210103

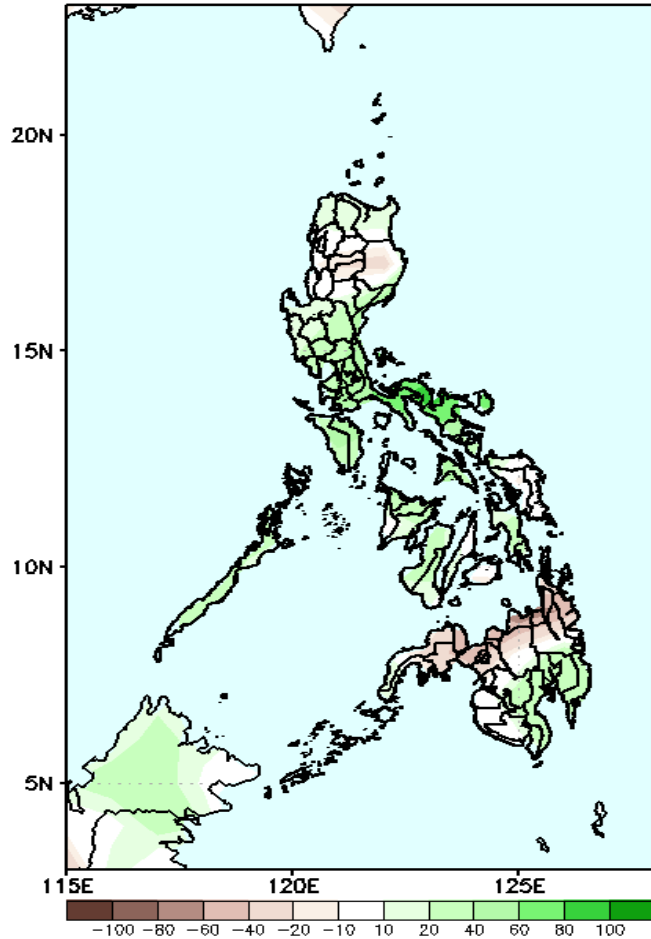


Upper and low level Divergence suggest likelihood of precipitation in most parts of the country. Northeast Monsoon affecting most parts of Luzon while easterlies affecting Visayas and Mindanao during the forecast period.

# Precipitation Anomaly and Exceedance Probability > 25/50 mm

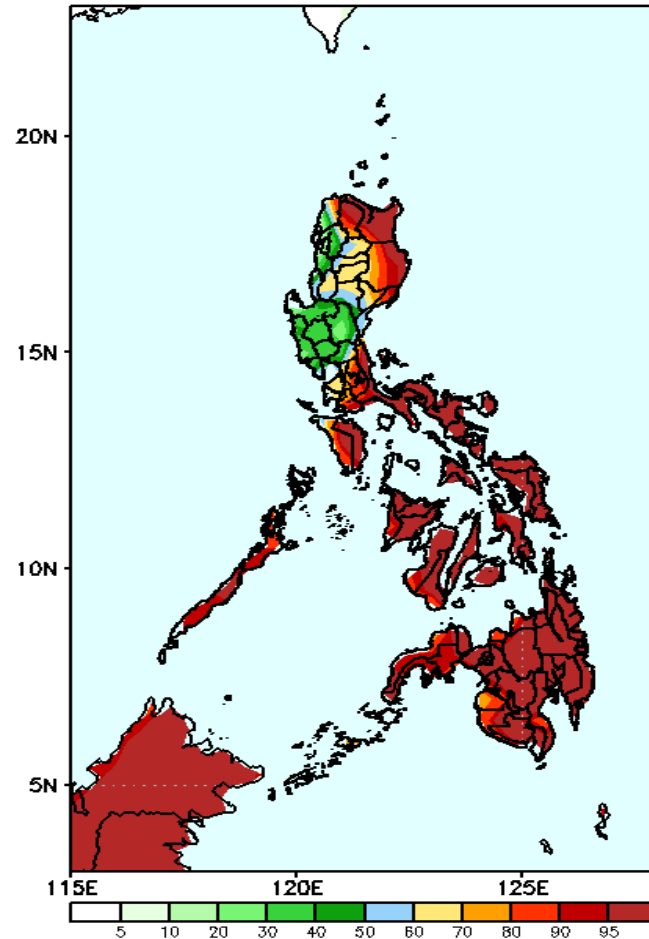
**Week 1: Dec 28, 2020-Jan 3, 2021**

GEFS Week-1 Precip Anomaly  
Valid: 20201228 - 20210103



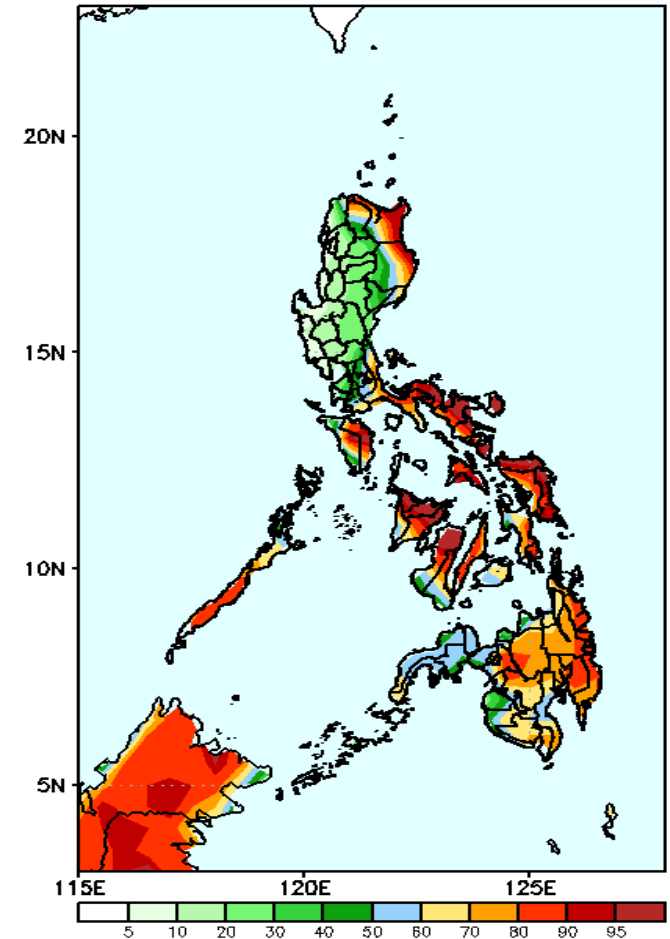
Increase of rainfall of 40-100mm is expected in southern Luzon, Bicol Region, western Visayas and southern Mindanao while rainfall deficit of 20-60mm in Eastern Samar and northern Mindanao.

GEFS Week-1 Exceedance Prob. > 25mm  
Valid: 20201228 - 20210103



High probability of rainfall to exceed 25mm in most parts of the country except in western and central parts of Luzon during the forecast period.

GEFS Week-1 Exceedance Prob. > 50mm  
Valid: 20201228 - 20210103

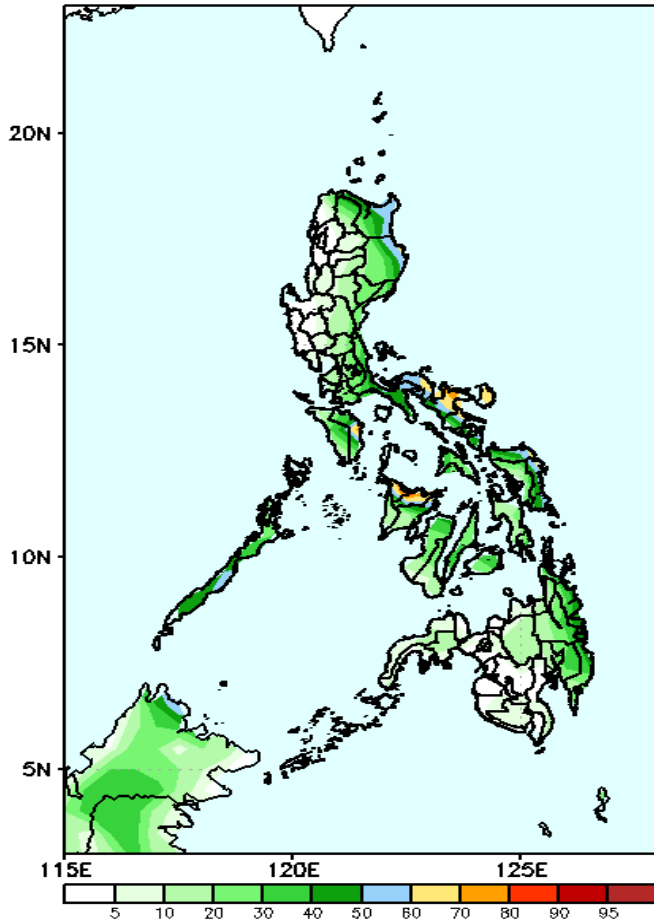


High probability of rainfall to exceed 50mm in Apayao, Cagayan, Isabela, Mindoro, Bicol Region, in most parts of Visayas and Mindanao while less likely for the rest of the country during the forecast period.

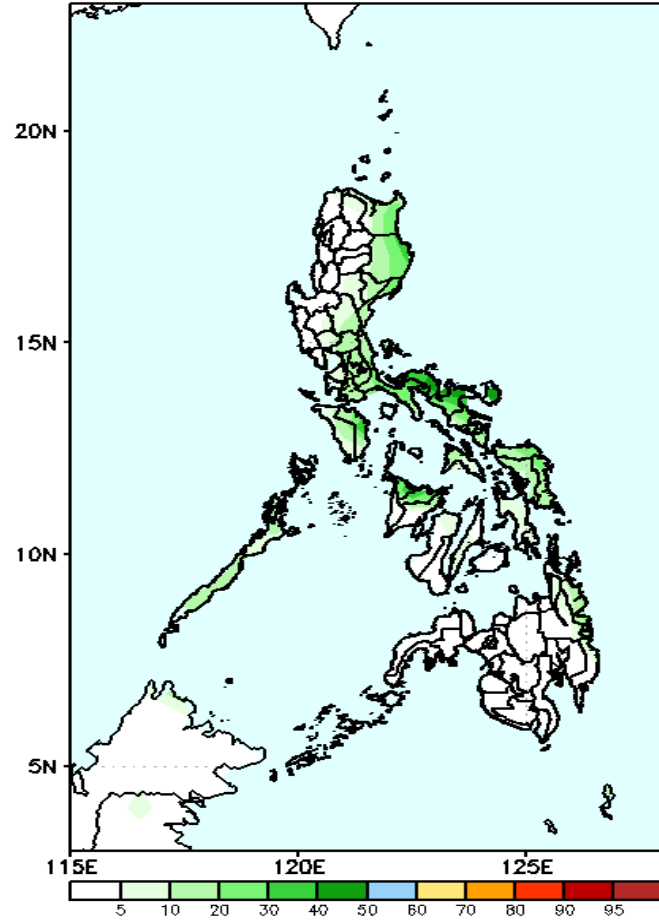
# Exceedance Probability > 100/150/200 mm

Week 1: Dec 28, 2020-Jan 3, 2021

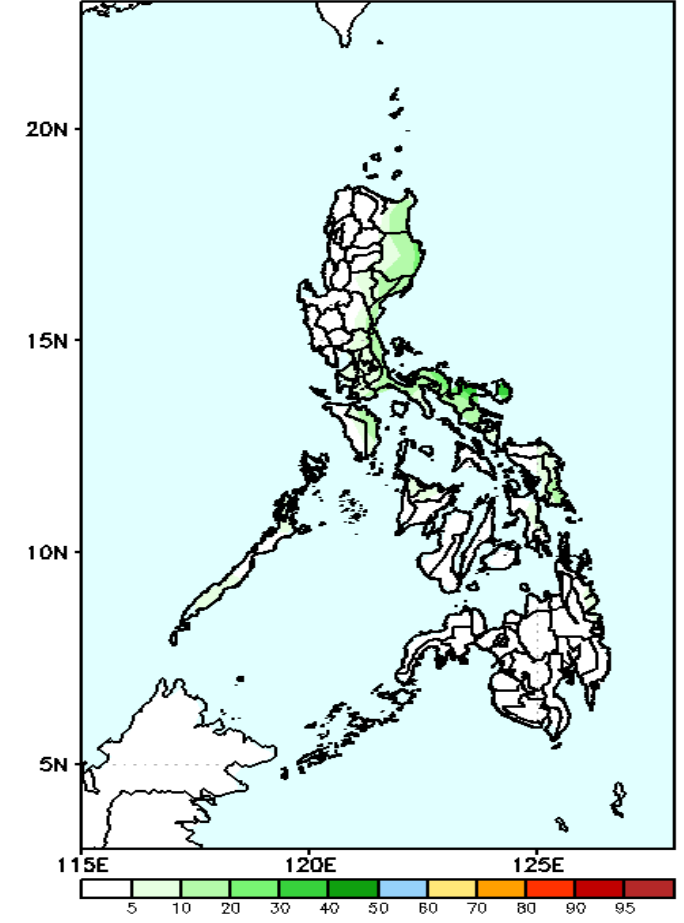
GEFS Week-1 Exceedance Prob. > 100mm  
Valid: 20201228 - 20210103



GEFS Week-1 Exceedance Prob. > 150mm  
Valid: 20201228 - 20210103



GEFS Week-1 Exceedance Prob. > 200mm  
Valid: 20201228 - 20210103



Less probability of rainfall to exceed 100mm in most parts of the country except in Bicol Region, Capiz & Aklan where there is 60-85% probability during the forecast period.

Less probability of rainfall to exceed 150mm in most parts of the country during the forecast period.

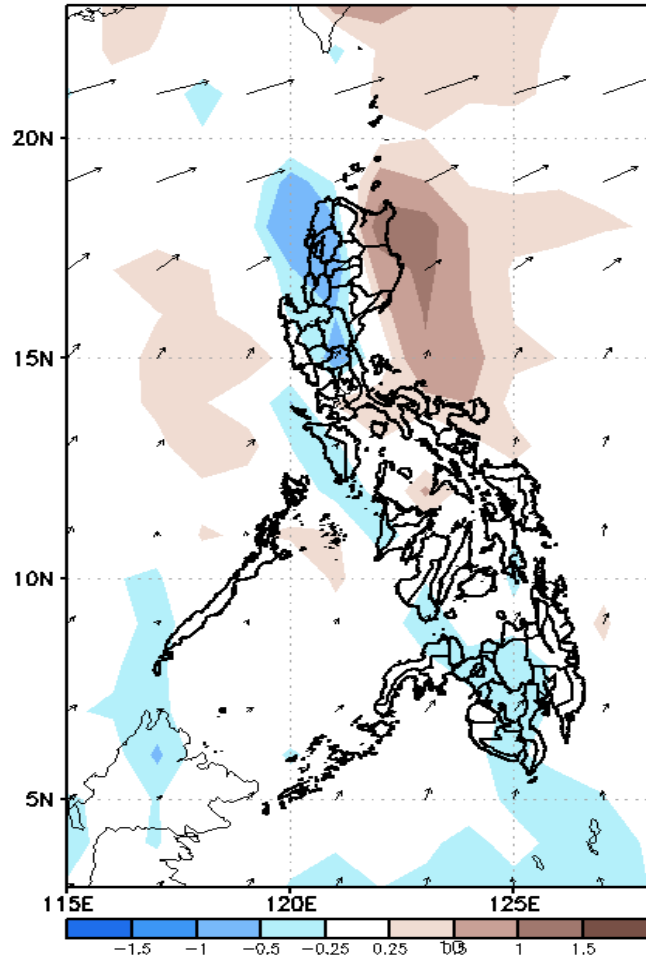
Less probability of rainfall to exceed 200mm in most parts of the country during the forecast period.



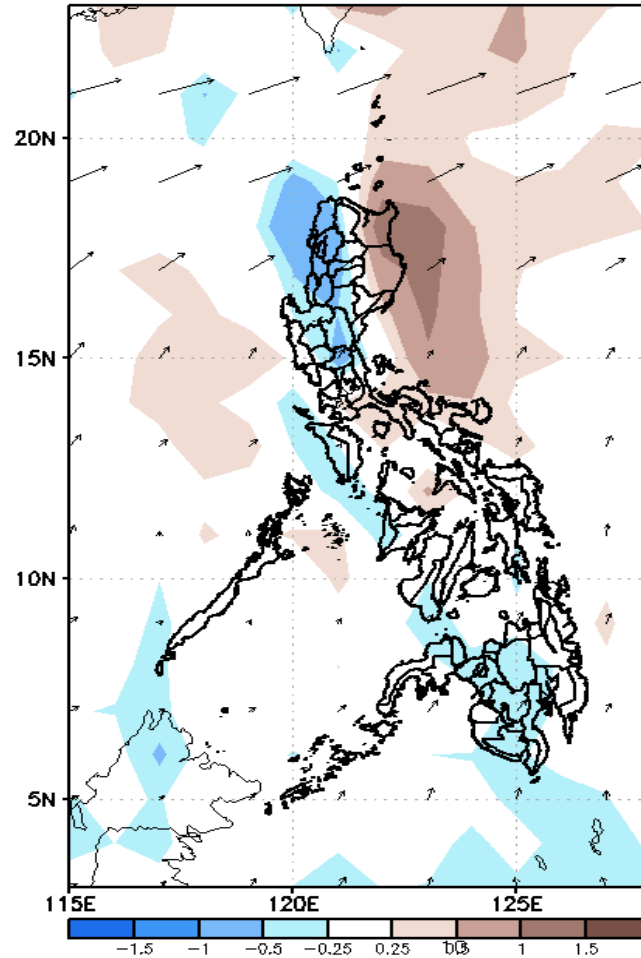
# GEFS Week-2 Forecasts: Divergence & Wind Anomaly

## Week 2: January 4-10, 2021

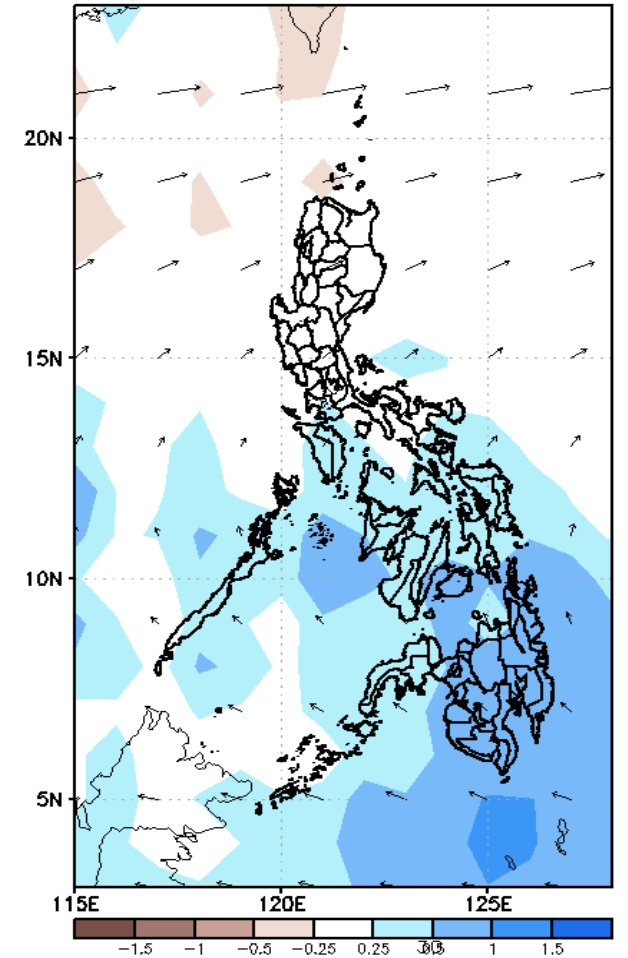
GEFS Week-2 850-hPa Divergence and Wind Anom  
Valid: 20210104 - 20210110



GEFS Week-2 700-hPa Divergence and Wind Anom  
Valid: 20210104 - 20210110



GEFS week-2 200-hPa Divergence and Wind Anom  
Valid: 20210104 - 20210110



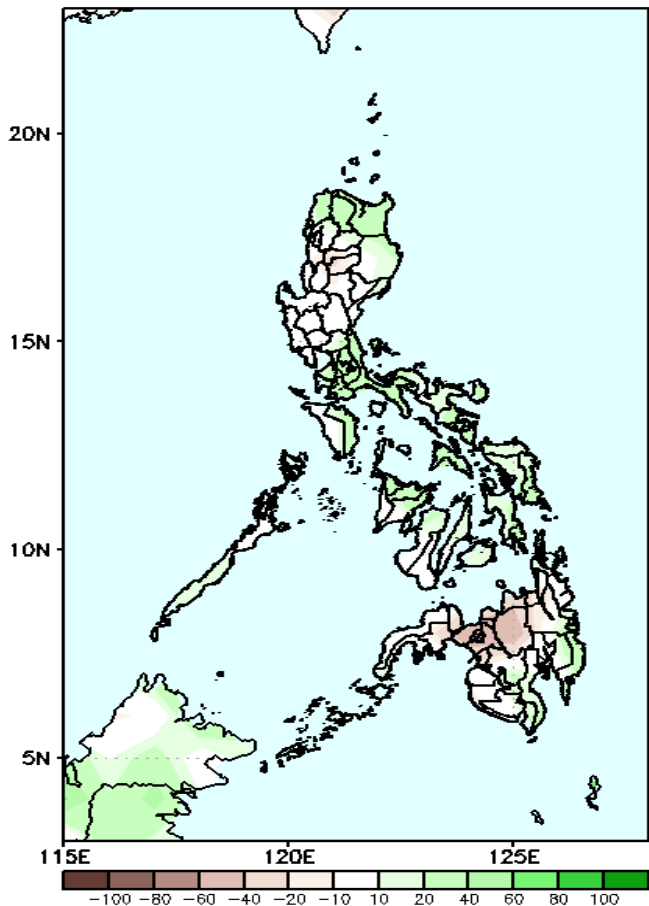
Upper and low level Divergence suggest likelihood of precipitation in Ilocos Region, Eastern sections of Luzon and most parts of Visayas and Mindanao. Northeast Monsoon affecting extreme northern and northern Luzon while easterlies affecting most parts of the country during the forecast period.



# Precipitation Anomaly and Exceedance Probability > 25/50 mm

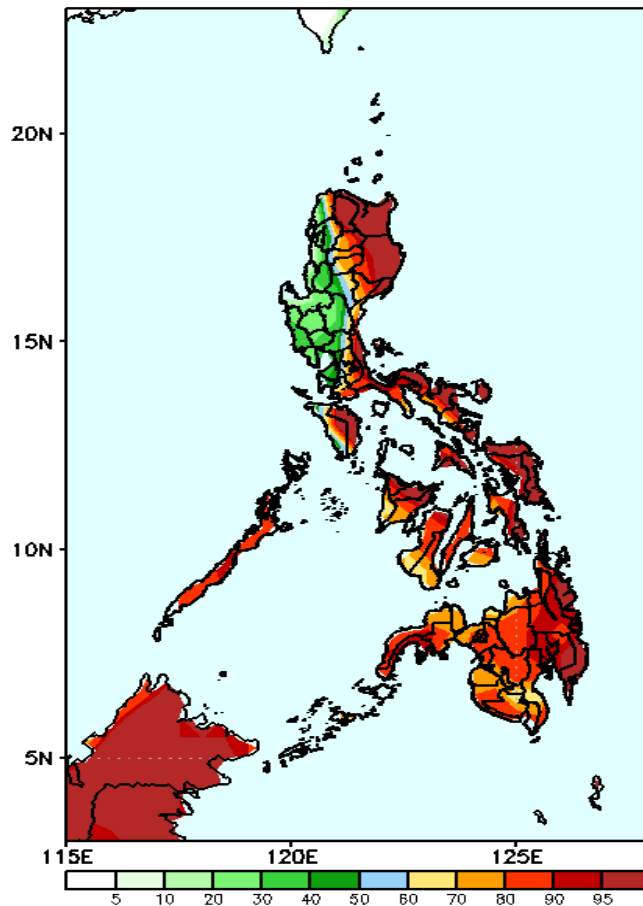
## Week 2: January 4-10, 2021

GEFS Week-2 Precip Anomaly  
Valid: 20210104 - 20210110



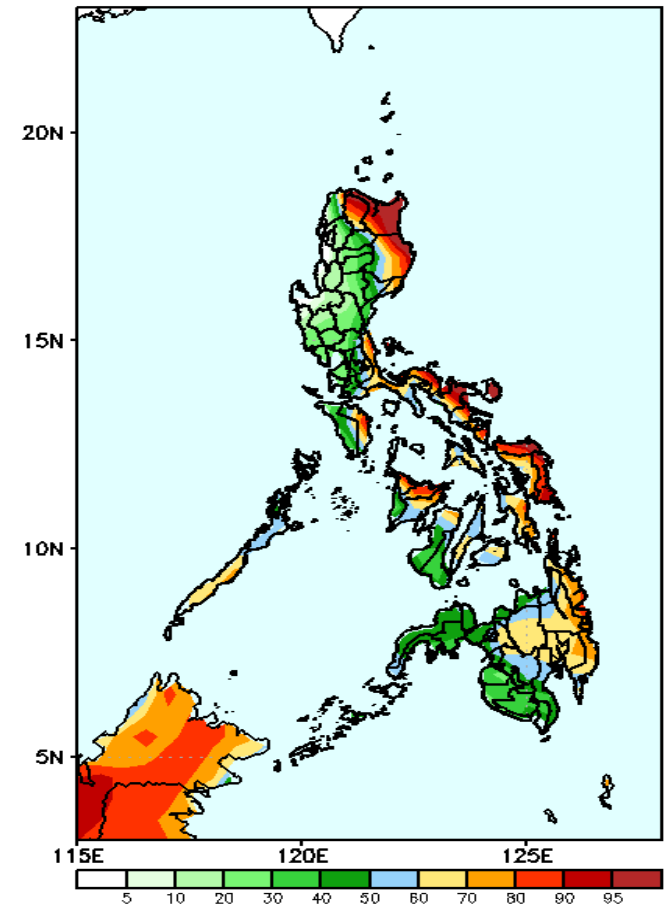
Increase of rainfall of 20-40mm is expected in northern Luzon, most parts of Visayas and southern Mindanao.

GEFS Week-2 Exceedance Prob. > 25mm  
Valid: 20210104 - 20210110



High probability of rainfall to exceed 25mm in most parts of the country is expected except in the western and central parts of Luzon during the forecast period.

GEFS Week-2 Exceedance Prob. > 50mm  
Valid: 20210104 - 20210110



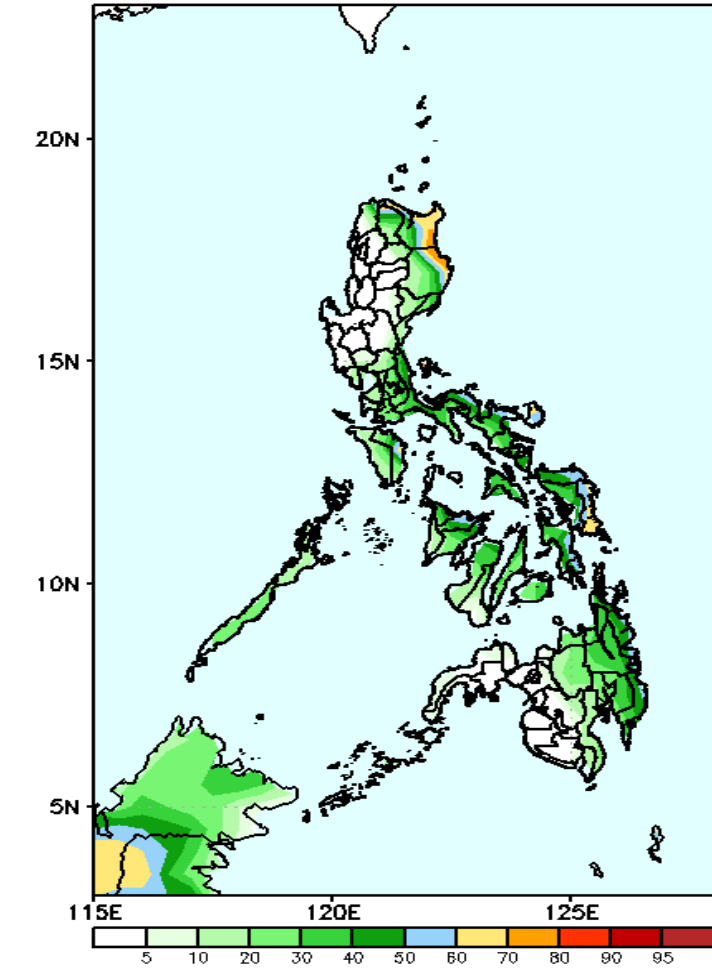
High probability of rainfall to exceed 50mm in Apayao, Cagayan, Isabela, in eastern & central parts of Visayas & Mindanao while less probability for the rest of the country during the forecast period.



# Exceedance Probability > 100/150/200 mm

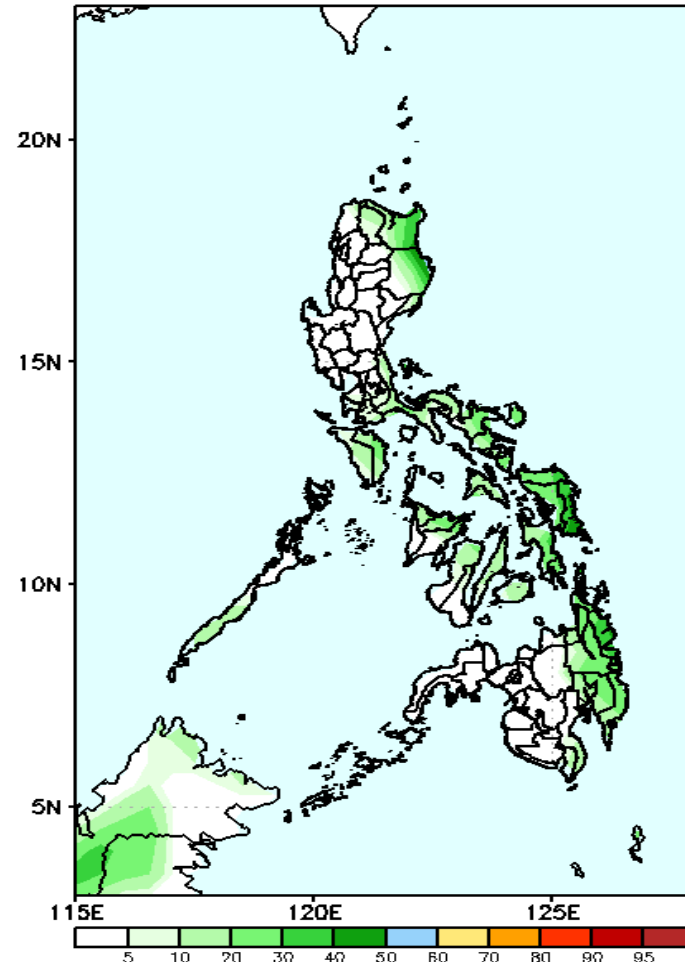
## Week 2: January 4-10, 2021

GEFS Week-2 Exceedance Prob. > 100mm  
Valid: 20210104 - 20210110



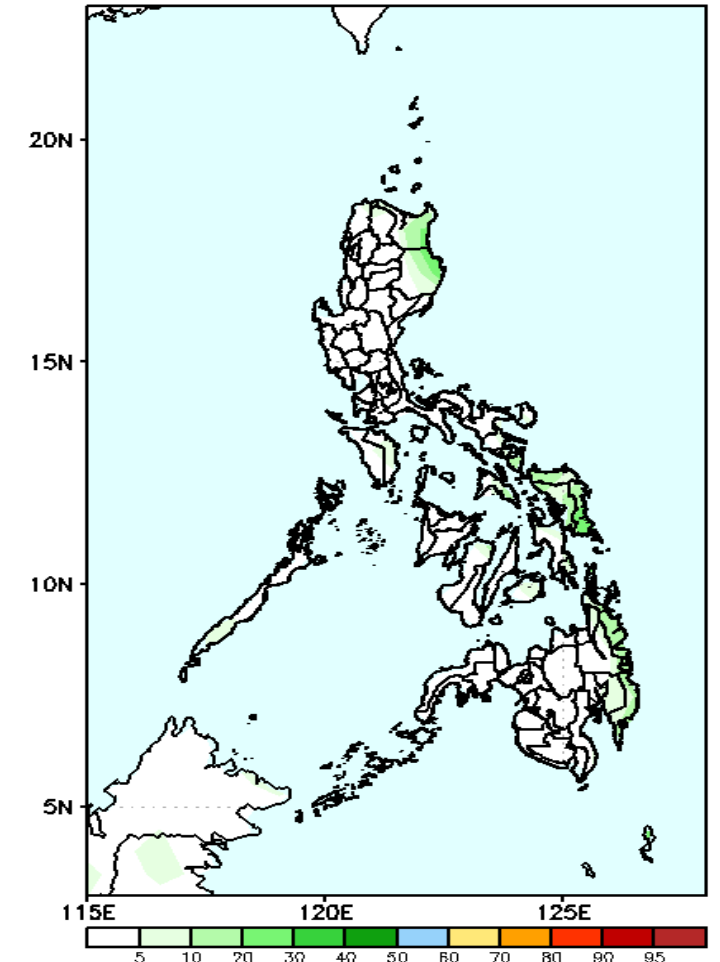
Less probability of rainfall to exceed 100mm in most parts of the country except in Cagayan Isabela and eastern Samar where there is 50-85% probability during the forecast period.

GEFS Week-2 Exceedance Prob. > 150mm  
Valid: 20210104 - 20210110



Less probability of rainfall to exceed 150mm in most parts of the country during the forecast period.

GEFS Week-2 Exceedance Prob. > 200mm  
Valid: 20210104 - 20210110

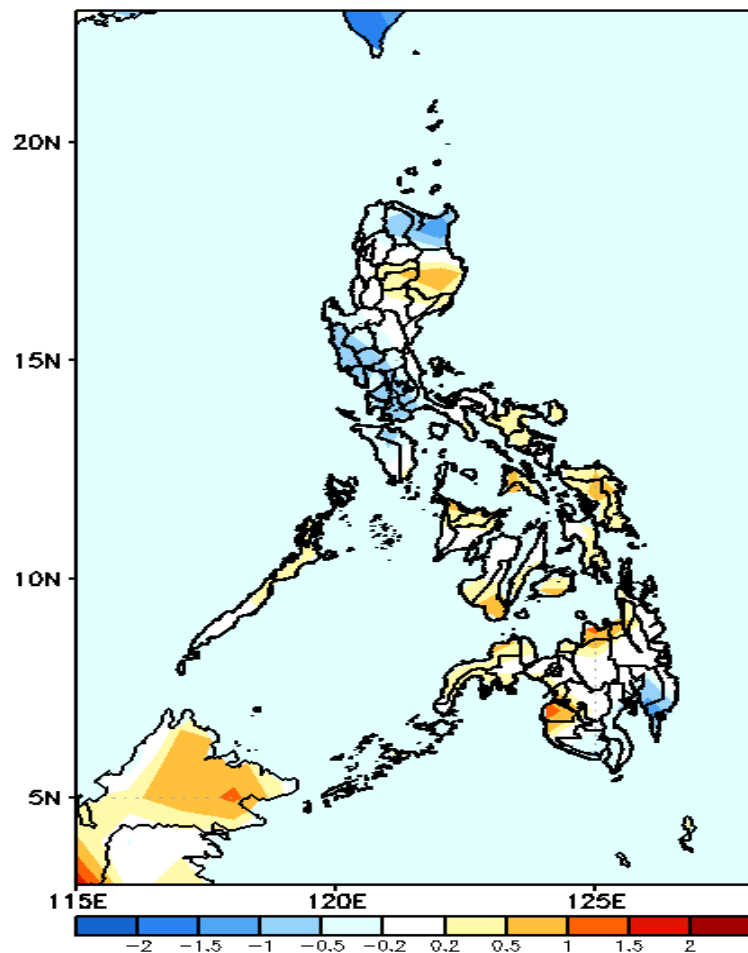


Less probability of rainfall to exceed 200mm in most parts of the country during the forecast period.



# GEFS Week-1 & 2 Forecasts: T2m Anomaly

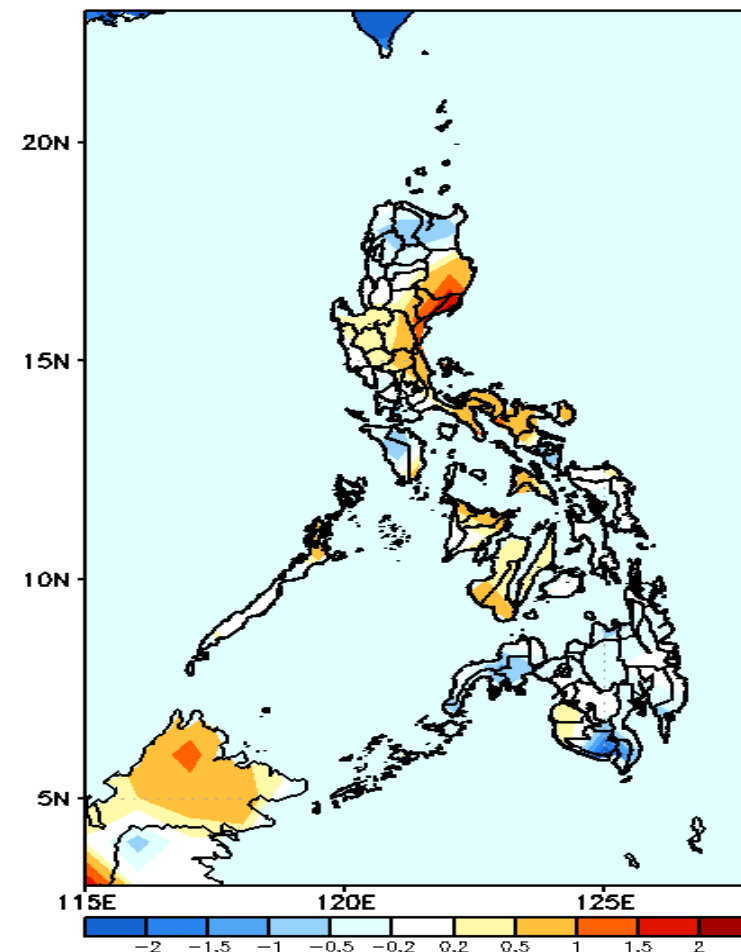
GEFS Week-1 T2m Anomaly  
Valid: 20201228 - 20210103



## 2m Temperature Week 1: Dec 28, 2020-Jan 3, 2021

Average to slightly warmer than average surface air temperature is expected in Isabela and in most parts of Visayas and northern Mindanao while slightly cooler in Apayao, Cagayan, southwestern Luzon and Davao Region.

GEFS Week-2 T2m Anomaly  
Valid: 20210104 - 20210110



## 2m Temperature Week 2: January 4-10, 2021

Slightly warmer to warmer than average surface air temperature is expected in most parts of eastern Luzon, Bicol Region, and most parts of Visayas while slightly cooler than average temperature in northern Luzon, Mindoro, Zamboanga del Sur, South Cotabato and Sarangani.