



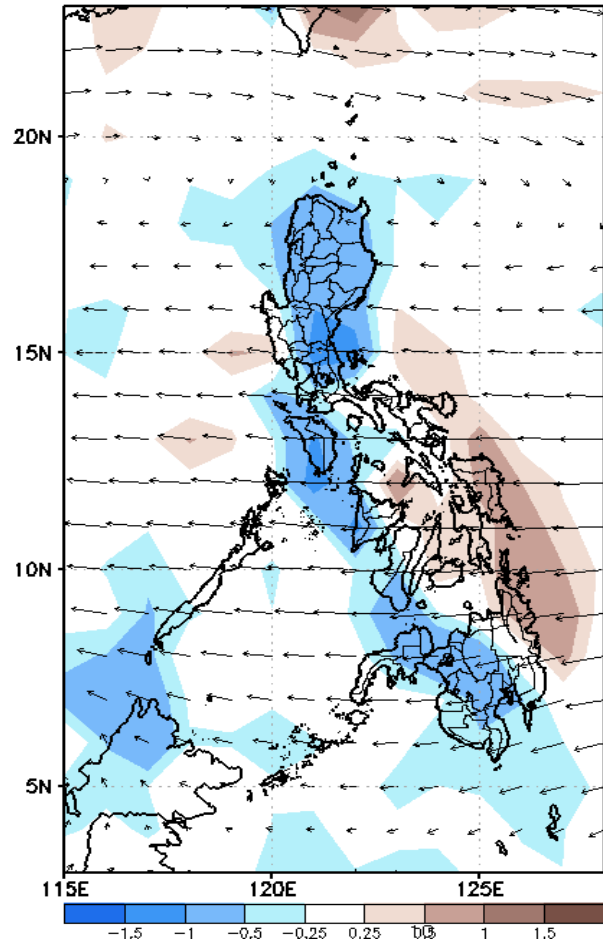
Week 1 & Week 2 Forecast for the Philippines using GEFS Model



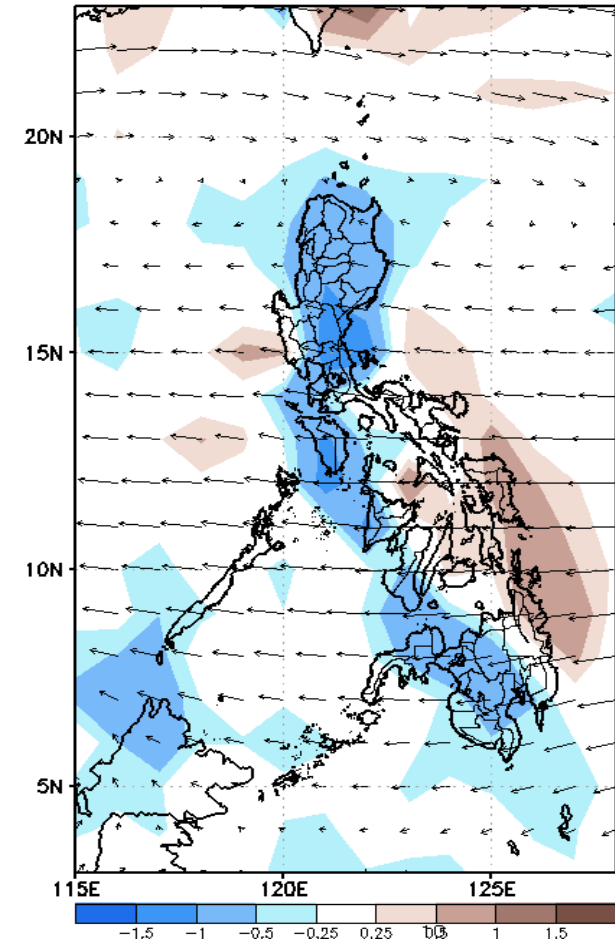
GEFS Week-1 Forecasts: Divergence & Wind Anomaly

Week 1: Dec 29-Jan 04, 2021

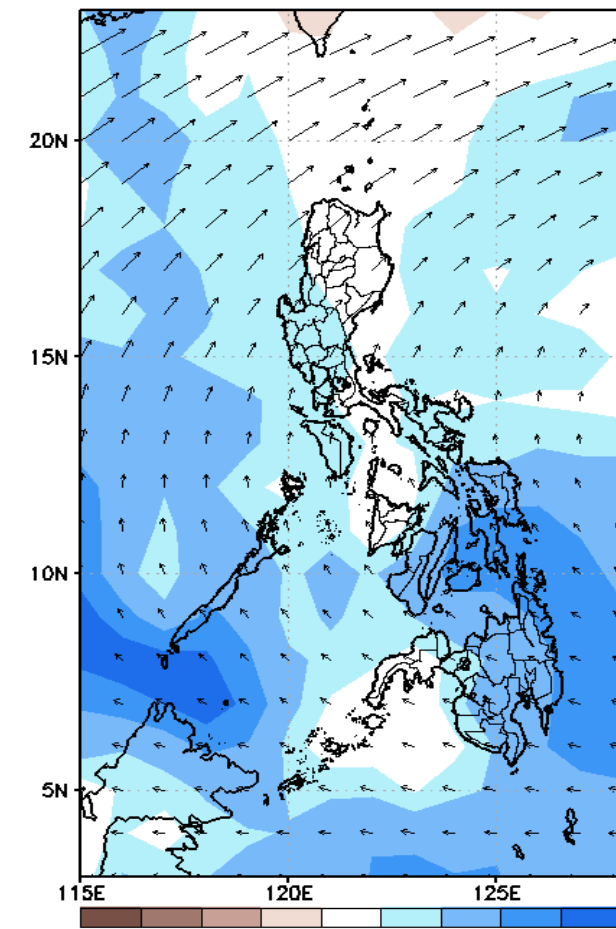
GEFS Week-1 850-hPa Divergence and Wind Anomaly
Valid: 20211229 - 20220104



GEFS Week-1 700-hPa Divergence and Wind Anomaly
Valid: 20211229 - 20220104



GEFS Week-1 200-hPa Divergence and Wind Anomaly
Valid: 20211229 - 20220104

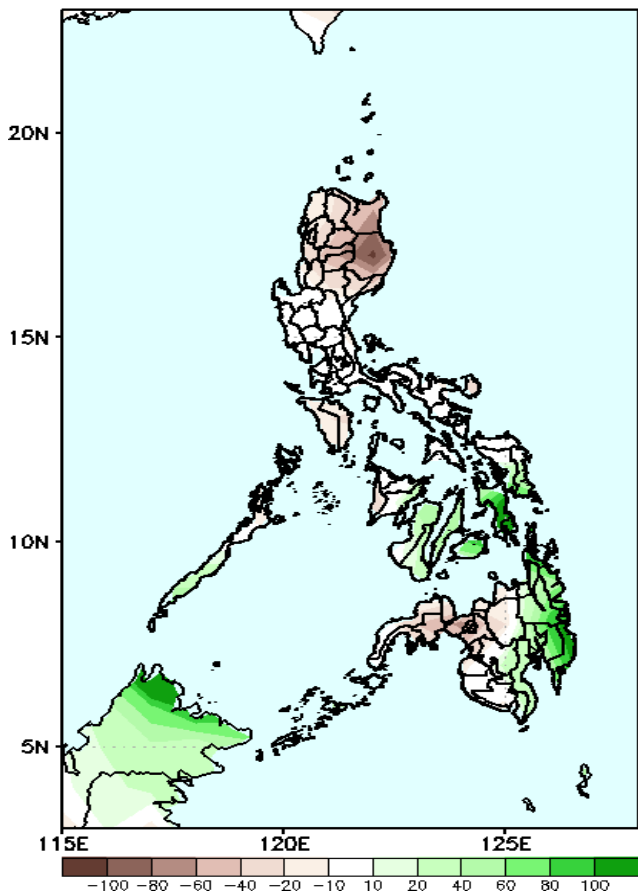


Upper and low level Divergence suggest likelihood of light to moderate precipitation in most parts of the country. Northeast Monsoon affecting Eastern sections of Luzon while Easterlies affecting the rest of the country during the forecast period..

Precipitation Anomaly and Exceedance Probability > 25/50 mm

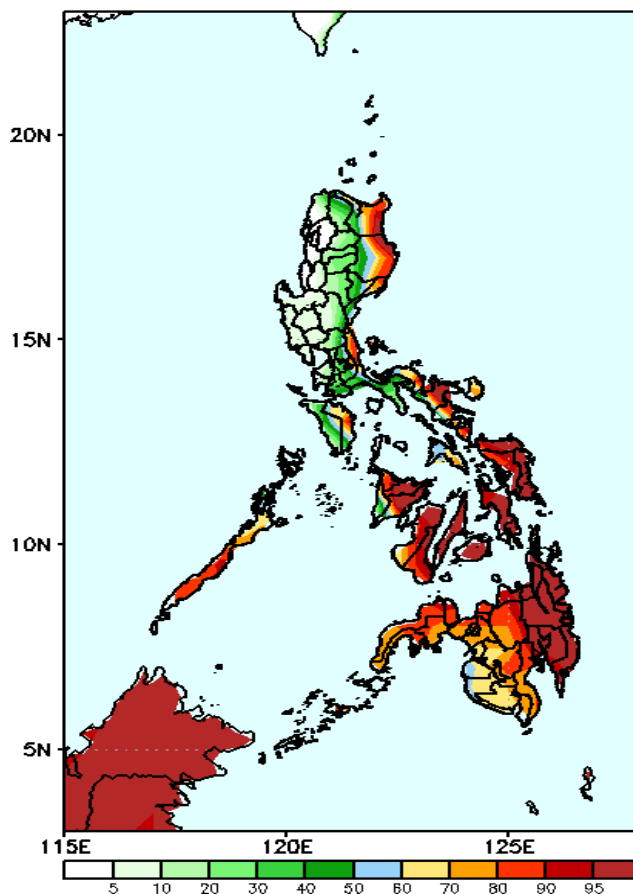
Week 1: Dec 29-Jan 04, 2021

GEFS Week-1 Precip Anomaly
Valid: 20211229 - 20220104



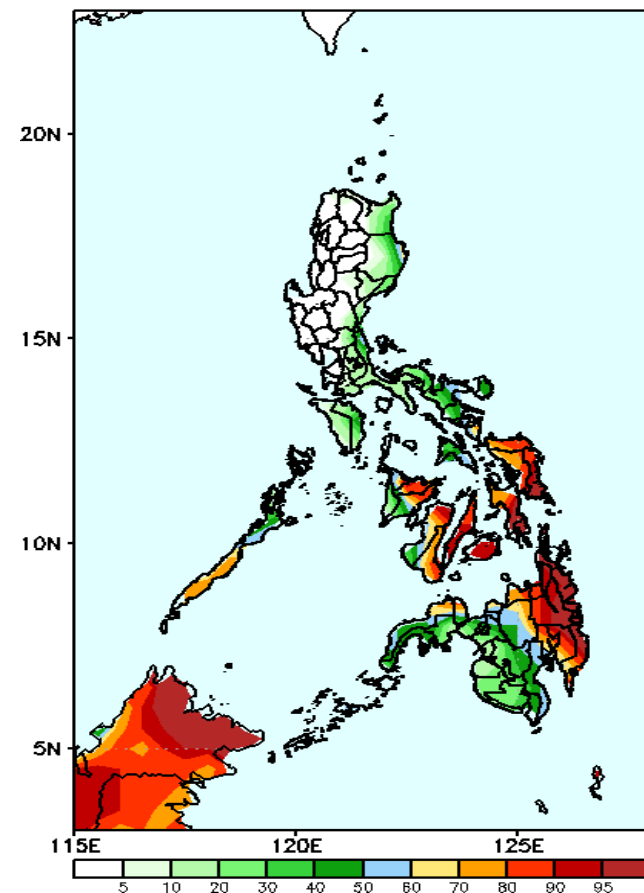
Rainfall deficit of 20-60mm is expected in most parts of Luzon, Misamis Occidental, Lanao Provinces and Zamboanga Peninsula while 40-80mm increase of rainfall in most parts of Visayas and eastern Mindanao during the forecast period.

GEFS Week-1 Exceedance Prob. > 25mm
Valid: 20211229 - 20220104



High probability of rainfall to exceed 25mm in parts of Cagayan, Isabela, Aurora, Quezon, Batangas, Quezon, most of Bicol region, Palawan and most parts of Visayas and Mindanao while less likely for the rest of the country during the forecast period.

GEFS Week-1 Exceedance Prob. > 50mm
Valid: 20211229 - 20220104

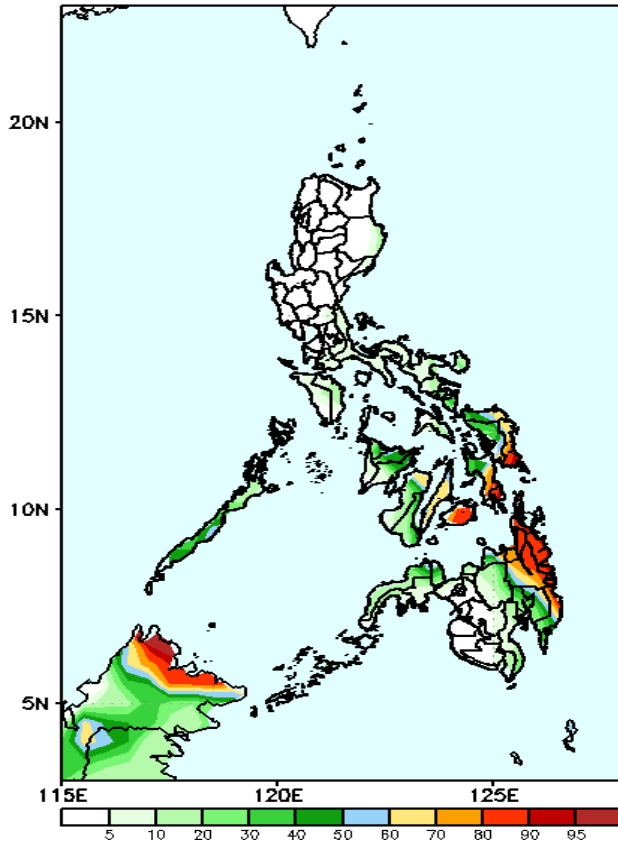


High probability of rainfall to exceed 50mm in parts of Cagayan, Isabela, Aurora, Quezon, Batangas, Quezon, most of Bicol region, Palawan and most parts of Visayas and Mindanao while less likely for the rest of the country during the forecast period.

Exceedance Probability > 100/150/200 mm

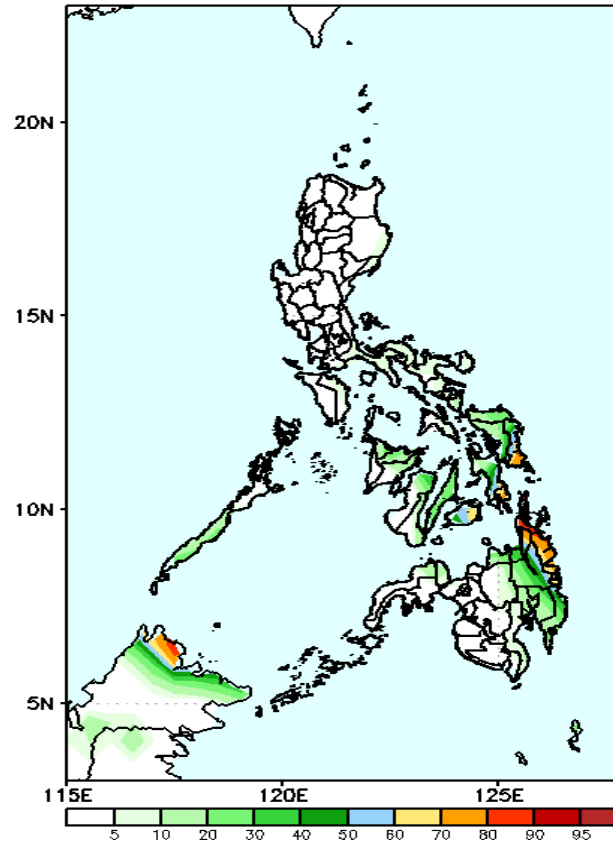
Week 1: Dec 29-Jan 04, 2021

GEFS Week-1 Exceedance Prob. > 100mm
Valid: 20211229 - 20220104



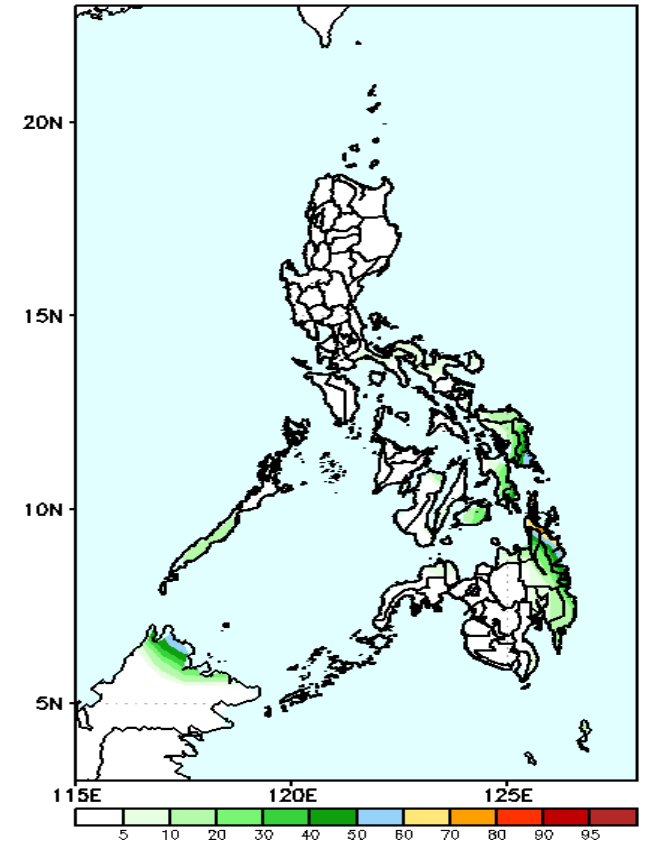
High probability of rainfall to exceed 100mm in most parts of Eastern Visayas, some parts of Western and Central Visayas and CARAGA while less likely for the rest of the country during the forecast period.

GEFS Week-1 Exceedance Prob. > 150mm
Valid: 20211229 - 20220104



Less probability of rainfall to exceed 150mm in most parts of the country is expected except in Eastern Samar, Southern Leyte, Bohol & CARAGA where there is 60-85% probability during the forecast period.

GEFS Week-1 Exceedance Prob. > 200mm
Valid: 20211229 - 20220104



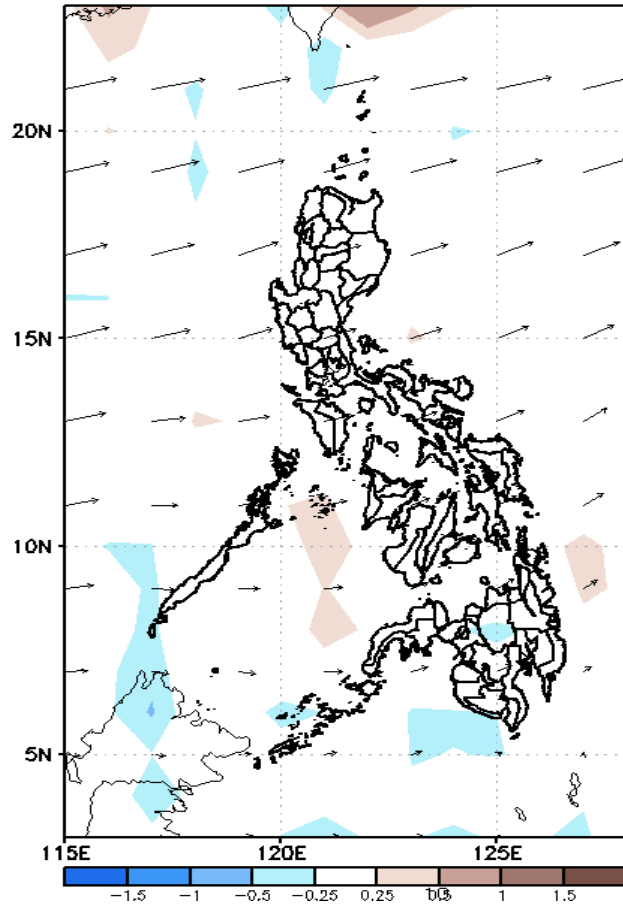
Less probability of rainfall to exceed 200mm in most parts of the country is expected during the forecast period.



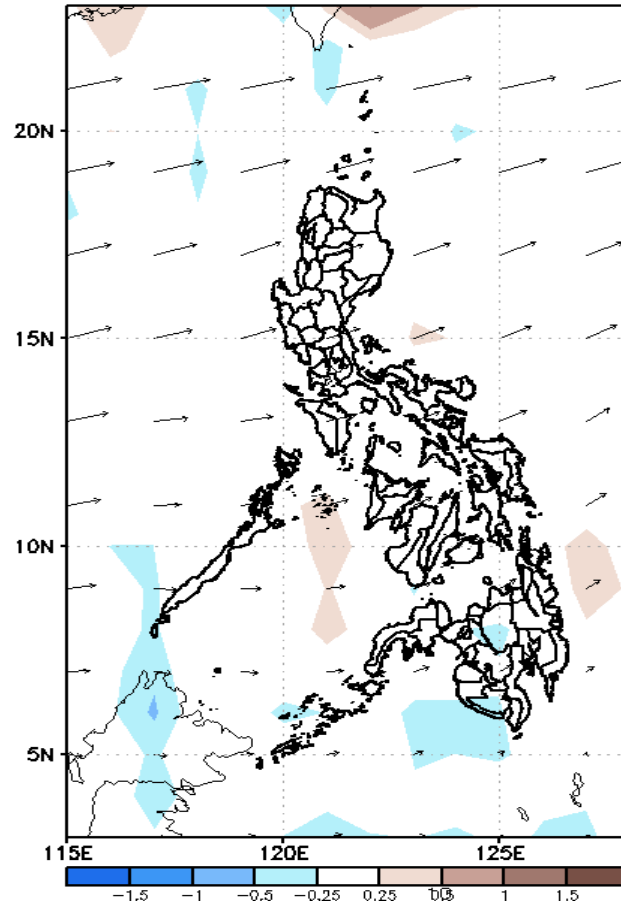
GEFS Week-2 Forecasts: Divergence & Wind Anomaly

Week 2: Jan 05-11, 2021

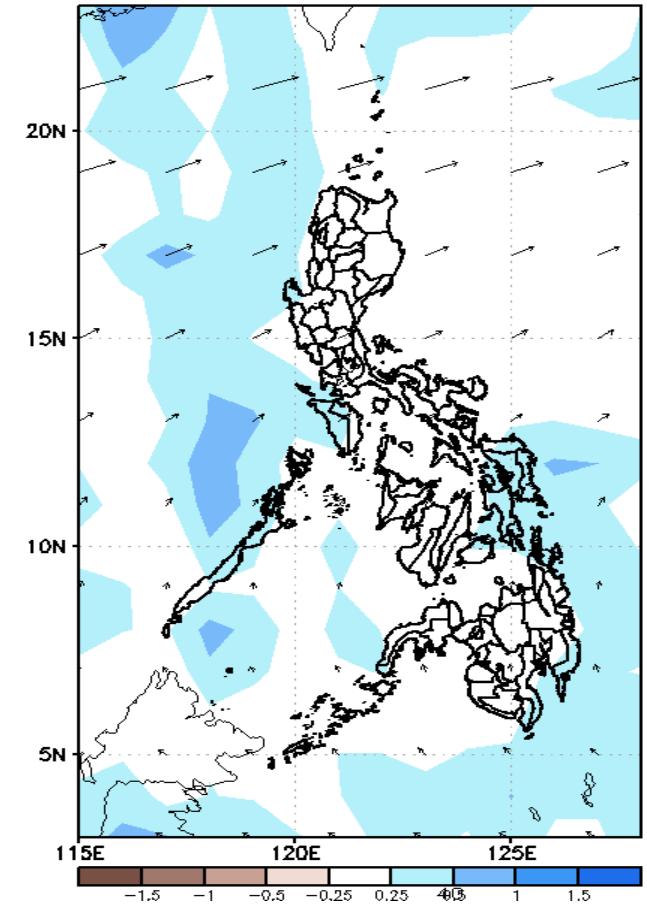
GEFS Week-2 850-hPa Divergence and Wind Anom
Valid: 20220105 - 20220111



GEFS Week-2 700-hPa Divergence and Wind Anom
Valid: 20220105 - 20220111



GEFS week-2 200-hPa Divergence and Wind Anom
Valid: 20220105 - 20220111

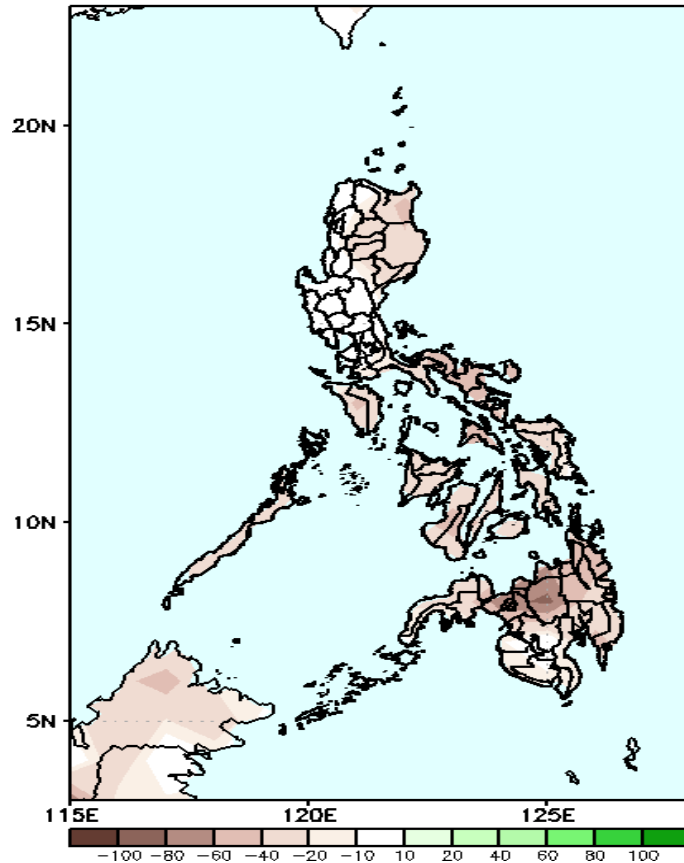


Upper and low level Divergence suggest likelihood of light precipitation in MIMAROPA, Eastern Visayas and Eastern Mindanao. Easterlies affecting most parts of the country during the forecast period.

Precipitation Anomaly and Exceedance Probability > 25/50 mm

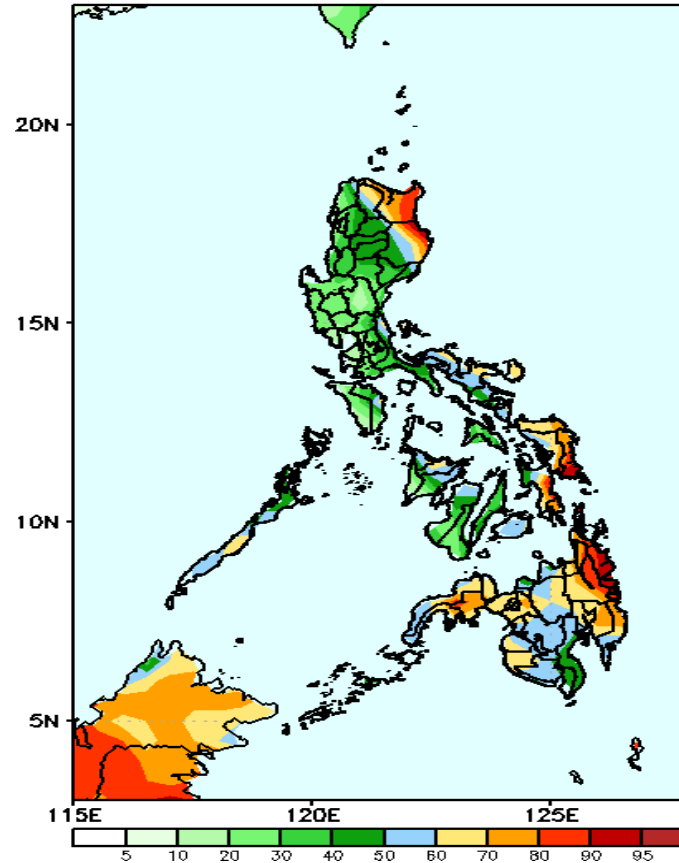
Week 2: Jan 05-11, 2021

GEFS Week-2 Precip Anomaly
Valid: 20220105 - 20220111



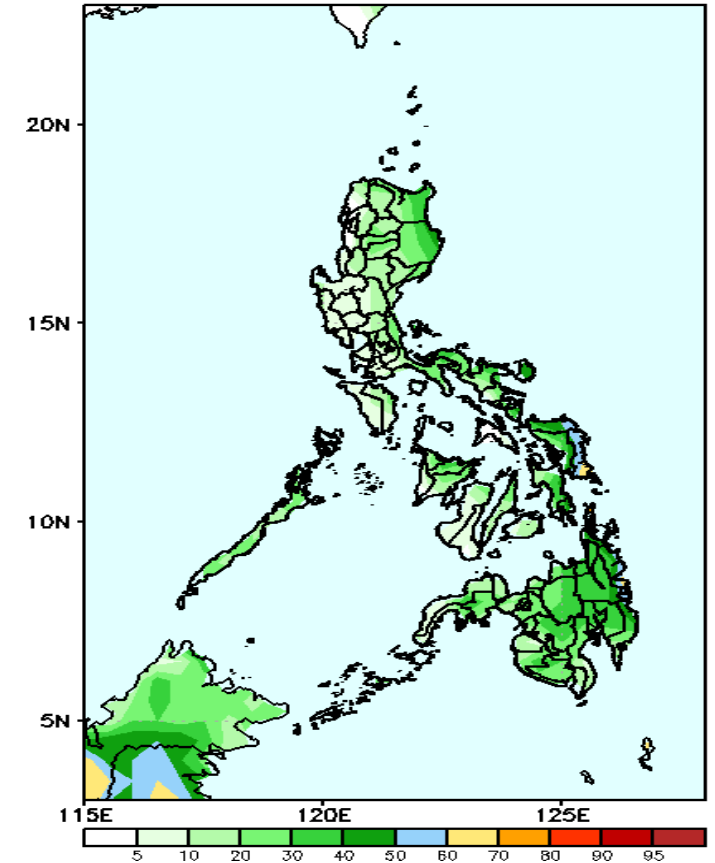
Rainfall deficit of 20-80mm is expected in most parts of the country during the forecast period

GEFS Week-2 Exceedance Prob. > 25mm
Valid: 20220105 - 20220111



High probability of rainfall to exceed 25mm in parts of Apayao, Isabela, Cagayan and Quezon, Bicol region, Eastern Visayas, parts of Western Visayas and parts of Mindanao while less likely for the rest of Luzon during the forecast period.

GEFS Week-2 Exceedance Prob. > 50mm
Valid: 20220105 - 20220111

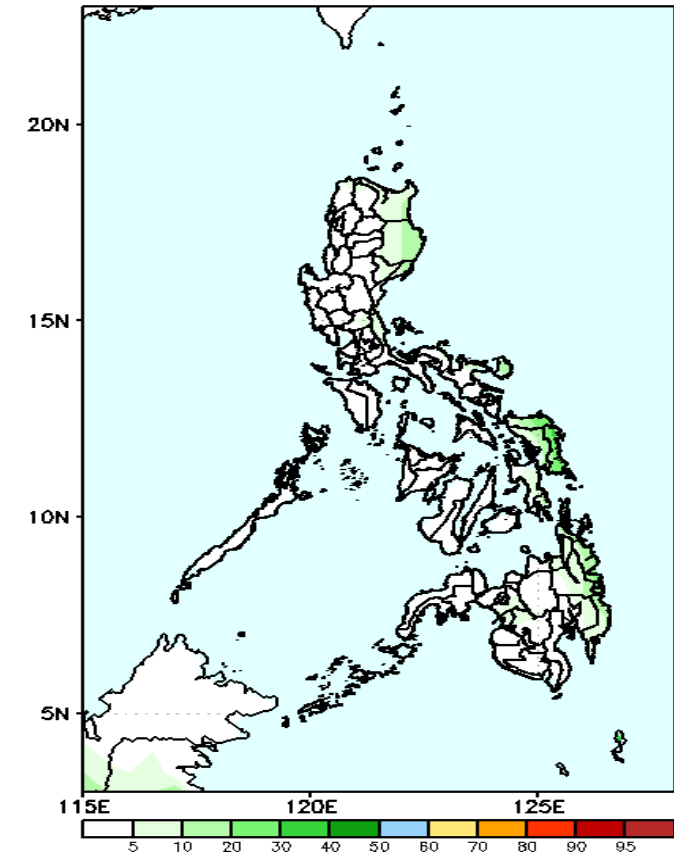


Less probability of rainfall to exceed 50mm in most parts of the country during the forecast period.

Exceedance Probability > 100/150/200 mm

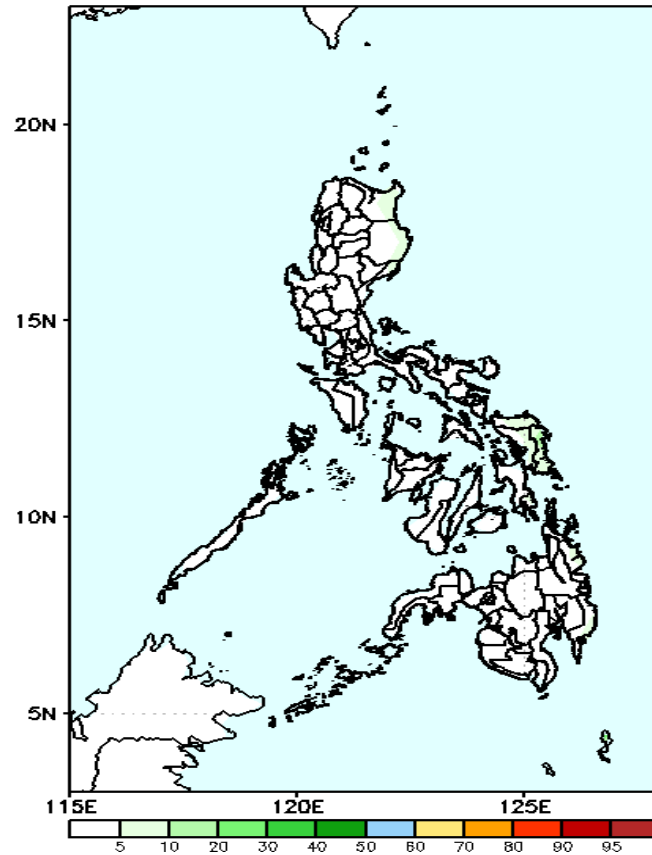
Week 2: Jan 05-11, 2021

GEFS Week-2 Exceedance Prob. > 100mm
Valid: 20220105 - 20220111



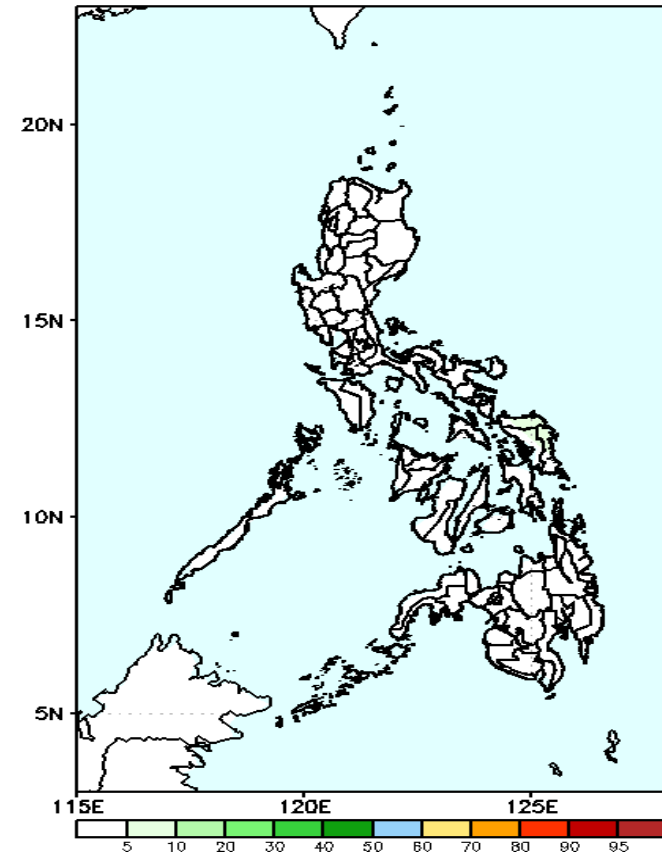
Less probability of rainfall to exceed 100mm in most parts of the country is expected during the forecast period.

GEFS Week-2 Exceedance Prob. > 150mm
Valid: 20220105 - 20220111



Less probability of rainfall to exceed 150mm in most parts of the country is expected during the forecast period.

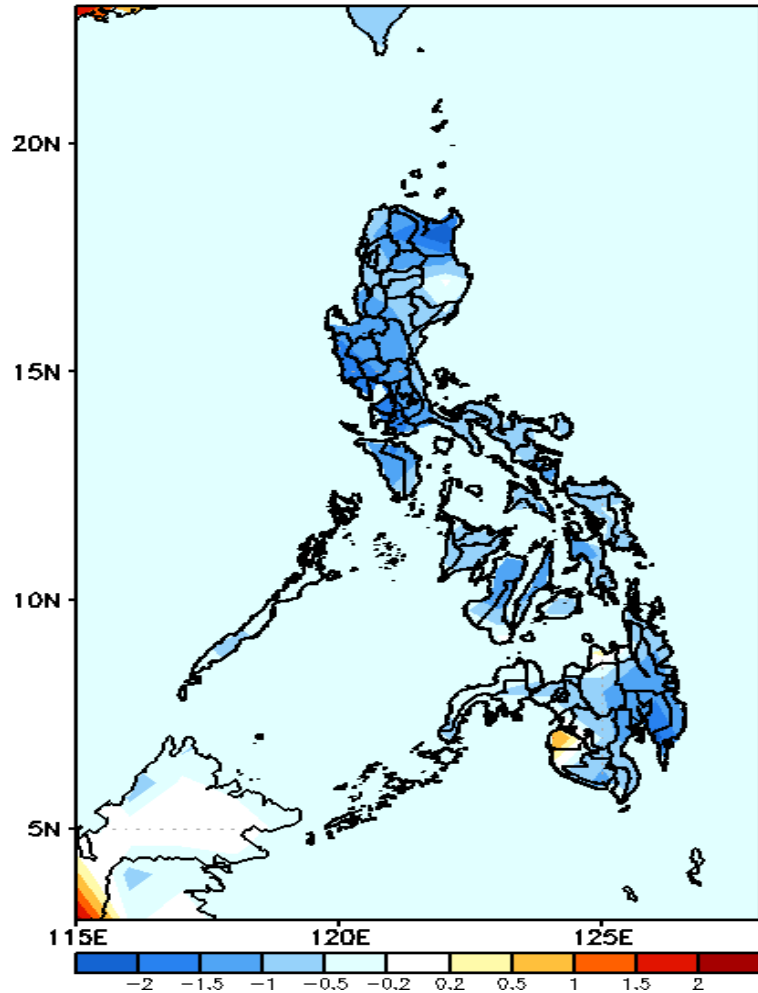
GEFS Week-2 Exceedance Prob. > 200mm
Valid: 20220105 - 20220111



Less probability of rainfall to exceed 200mm in most parts of the country is expected during the forecast period.

GEFS Week-1 & 2 Forecasts: T2m Anomaly

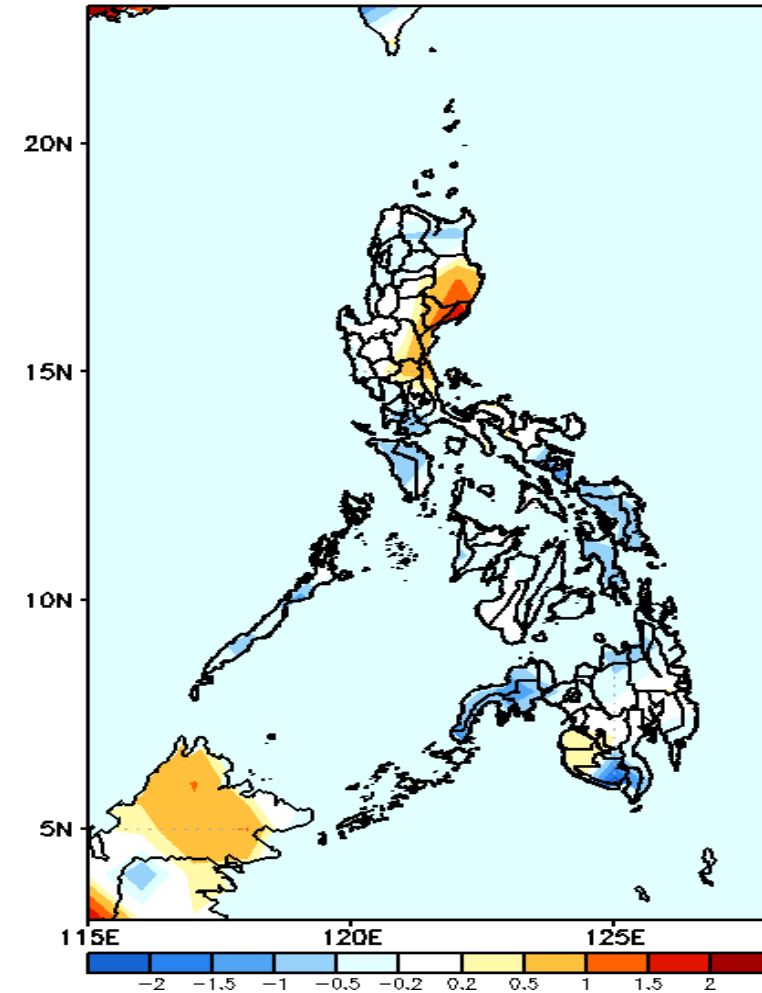
GEFS Week-1 T2m Anomaly
Valid: 20211229 - 20220104



2m Temperature Week 1: Dec 29-Jan 04, 2021

Cooler than average surface air temperature will likely experience in most parts of the country during the forecast period.

GEFS Week-2 T2m Anomaly
Valid: 20220105 - 20220111



2m Temperature Week 2: Jan 05-11, 2021

Average to slightly cooler than average surface air temperature will likely experience most parts of the country except in most parts of Cagayan Valley during the forecast period.