



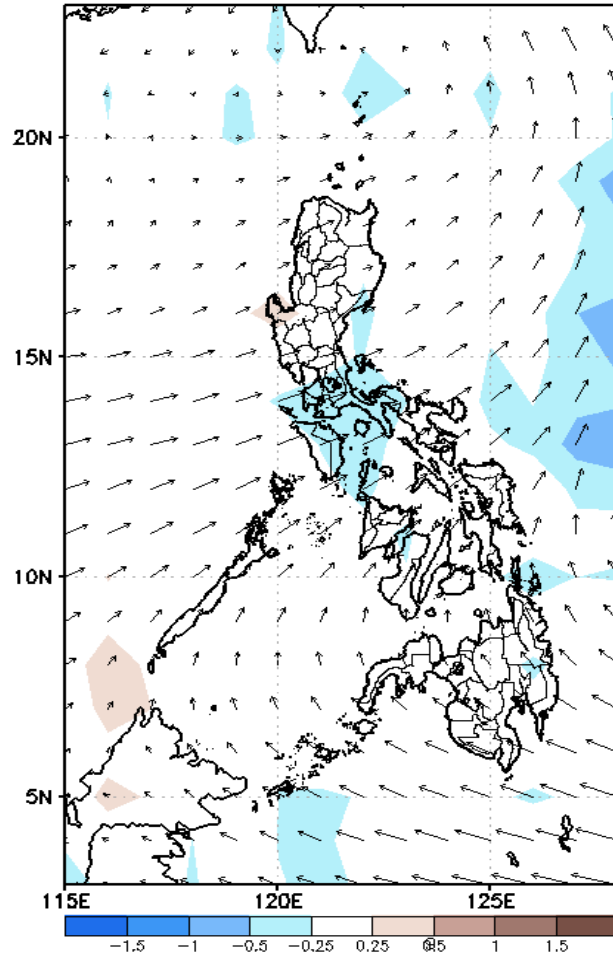
Week 1 & Week 2 Forecast for the Philippines using GEFS Model



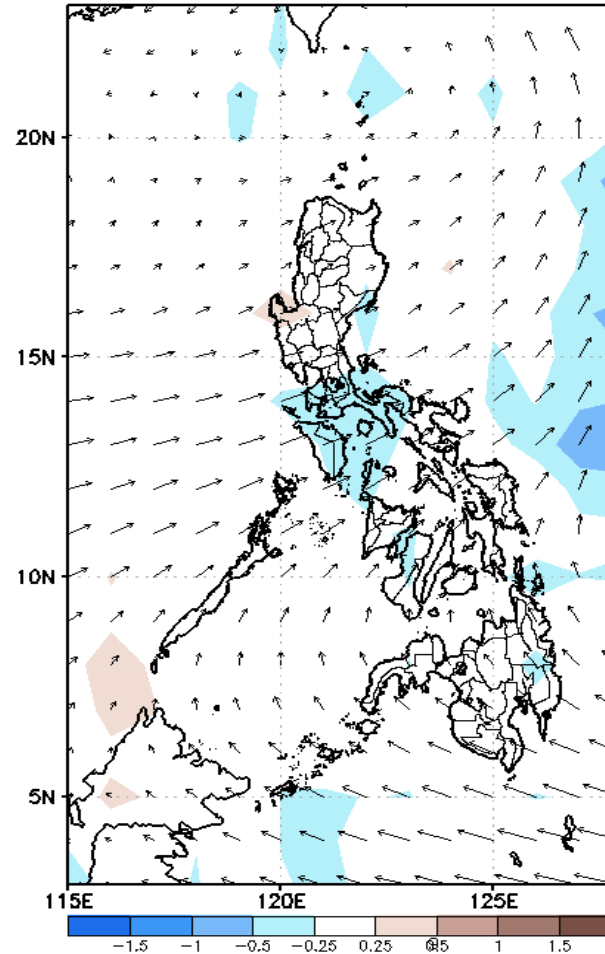
GEFS Week-1 Forecasts: Wind Anomaly Forecast

Week 1: Jul 29 – Aug 04, 2022

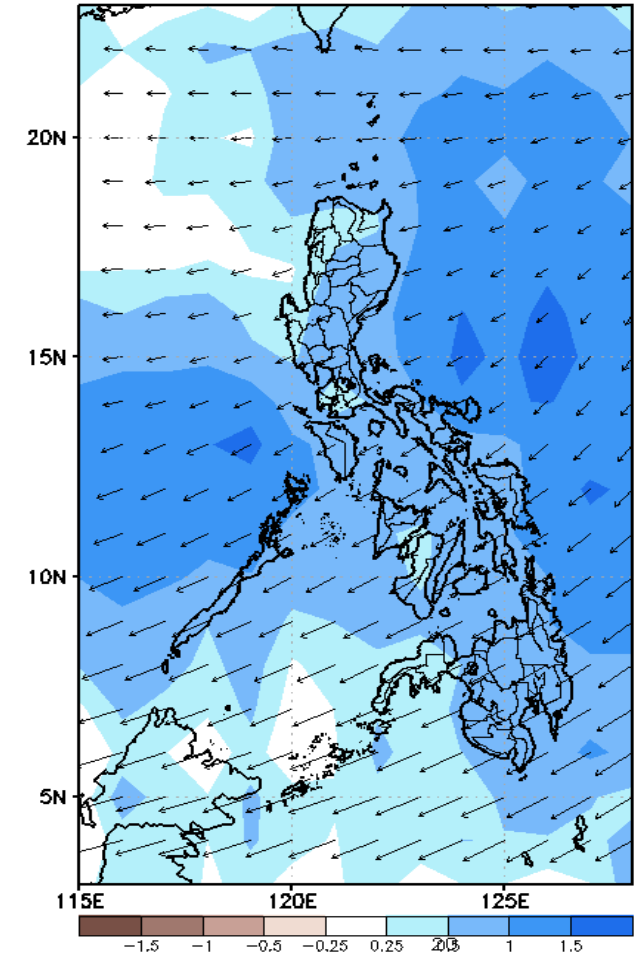
GEFS Week-1 850-hPa Divergence and Wind Anom
Valid: 20220729 – 20220804



GEFS Week-1 700-hPa Divergence and Wind Anom
Valid: 20220729 – 20220804



GEFS Week-1 200-hPa Divergence and Wind Anom
Valid: 20220729 – 20220804

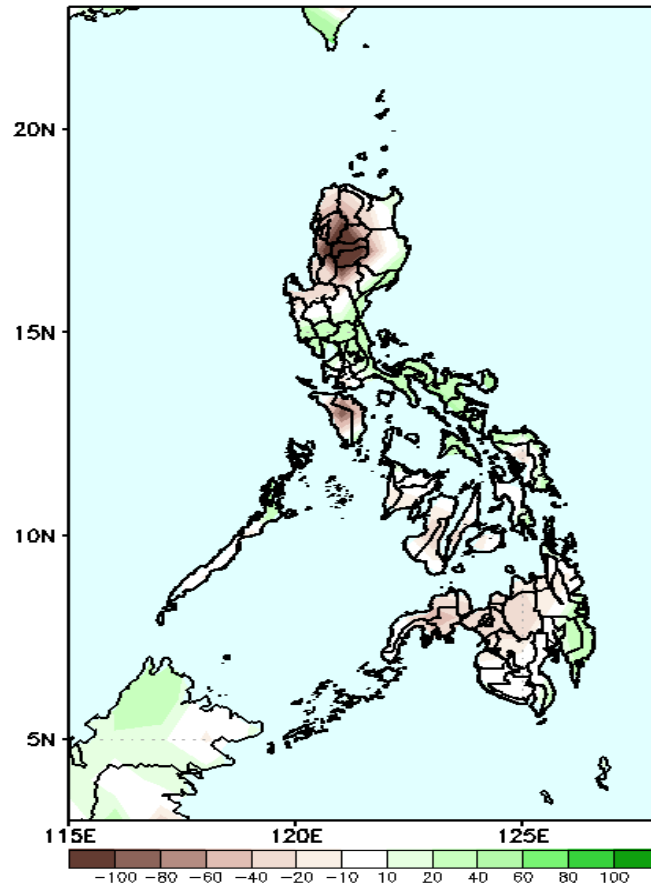


Southwest Monsoon affecting most parts of Luzon and Panay island while Easterlies affecting most parts of Visayas and Mindanao during the forecast period.

Precipitation Anomaly and Exceedance Probability > 25/50 mm

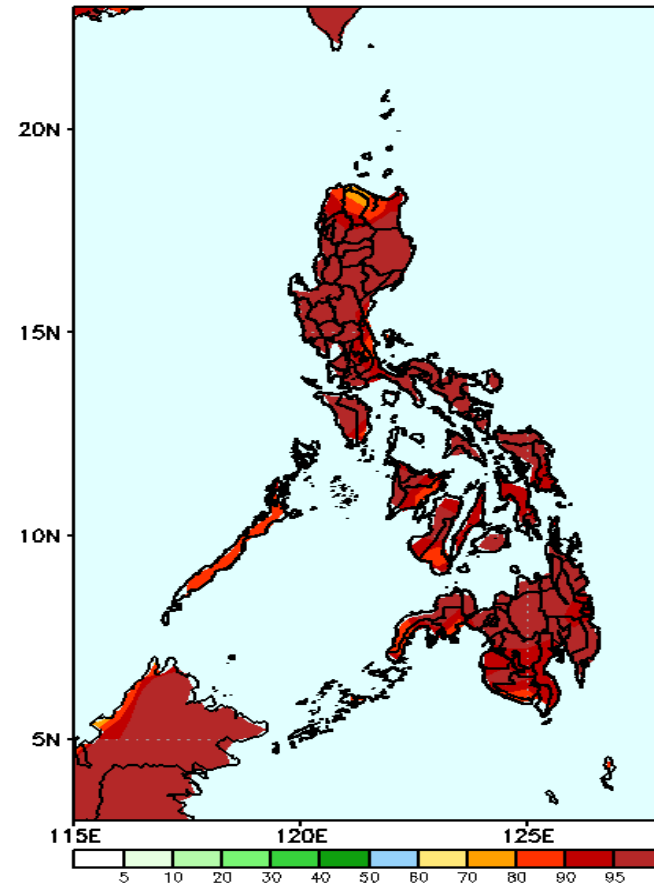
Week 1: Jul 29 – Aug 04, 2022

GEFS Week-1 Precip Anomaly
Valid: 20220729 – 20220804



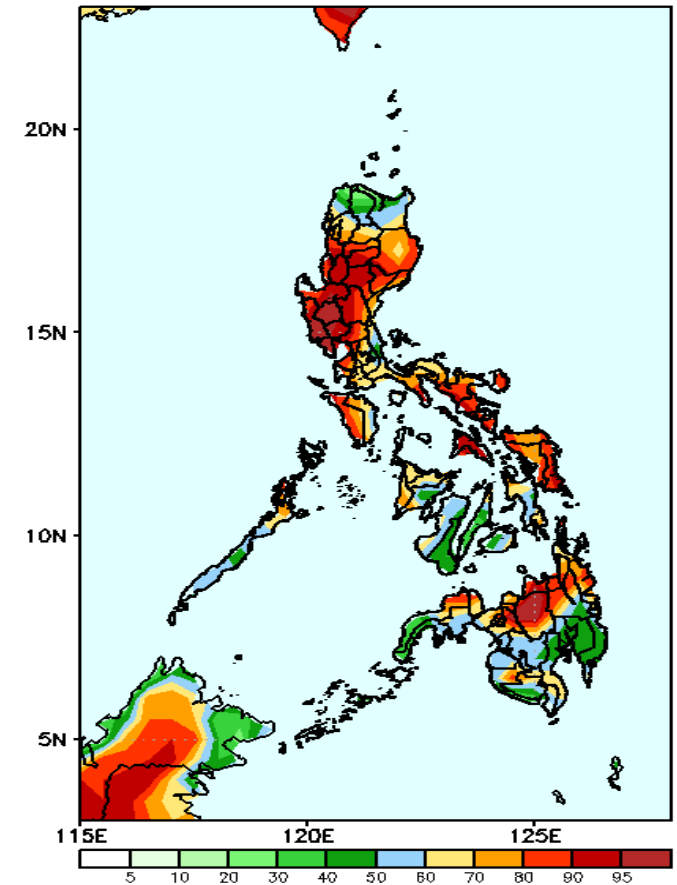
Rainfall deficit of more than 100mm is expected in Ilocos Sur, Abra & Cordillera Region, 40-80mm in Mindoro, Zamboanga Peninsula and northern Mindanao while 20-40mm increase of rainfall Central Luzon, Bicol Region, eastern Samar and Davao Region during the forecast period.

GEFS Week-1 Exceedance Prob. > 25mm
Valid: 20220729 – 20220804



High probability of rainfall to exceed 25mm in most parts of the country during the forecast period.

GEFS Week-1 Exceedance Prob. > 50mm
Valid: 20220729 – 20220804

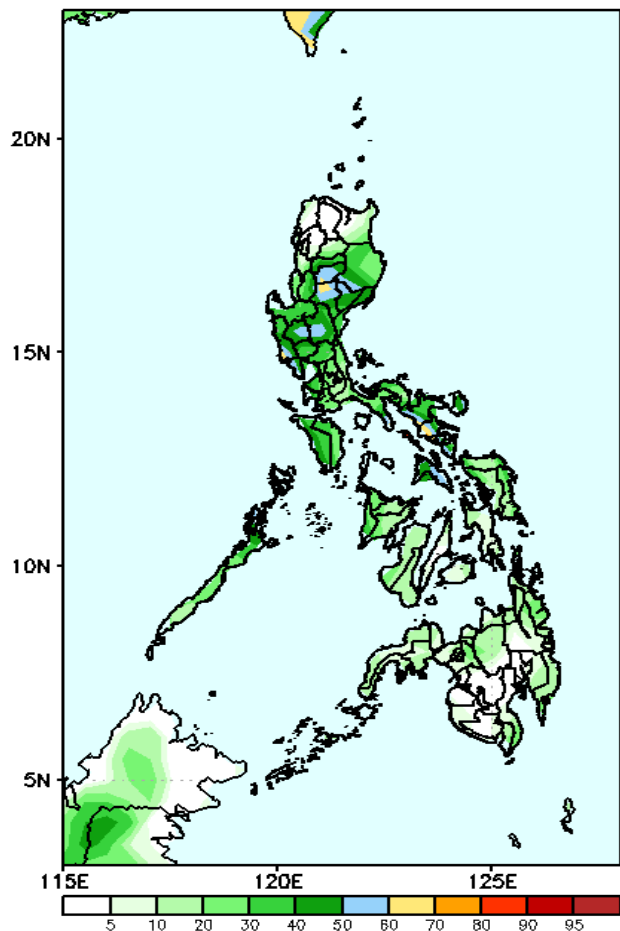


High probability of rainfall to exceed 50mm in most parts of Luzon (except Ilocos Norte, Apayao, Cagayan), Panay Island, eastern Visayas, Zamboanga Peninsula and northern Mindanao while less likely for the rest of the country during the forecast period.

Exceedance Probability > 100/150/200 mm

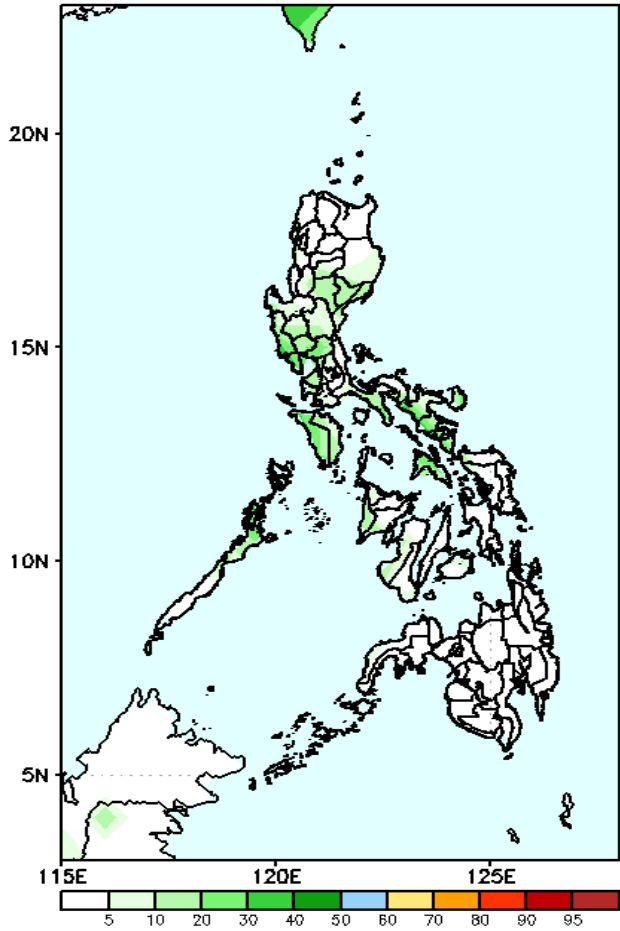
Week 1: Jul 29 – Aug 04, 2022

GEFS Week-1 Exceedance Prob. > 100mm
Valid: 20220729 – 20220804



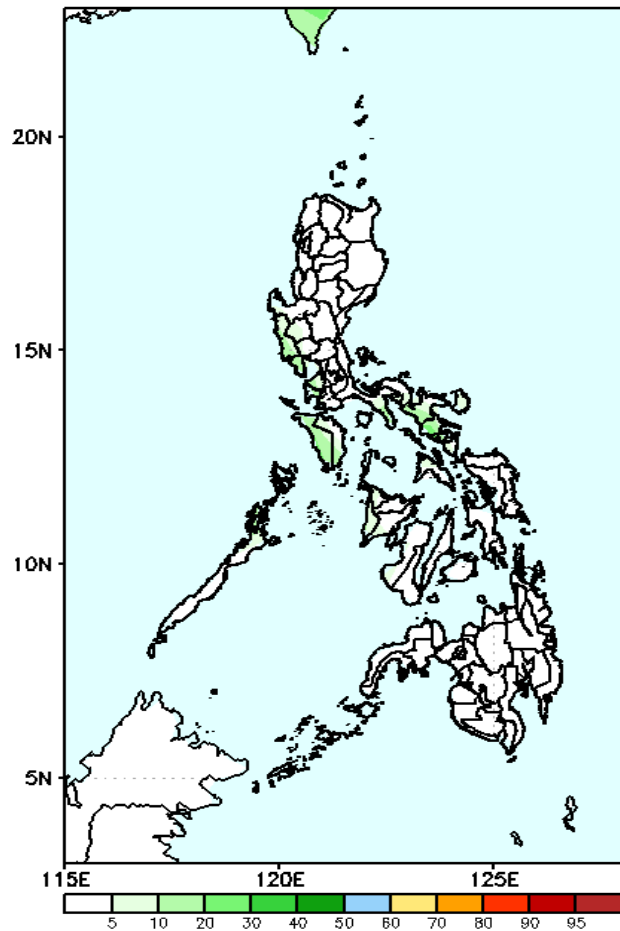
Low probability of rainfall to exceed 100mm in most parts of the country during the forecast period.

GEFS Week-1 Exceedance Prob. > 150mm
Valid: 20220729 – 20220804



Low probability of rainfall to exceed 150mm in most parts of the country during the forecast period.

GEFS Week-1 Exceedance Prob. > 200mm
Valid: 20220729 – 20220804

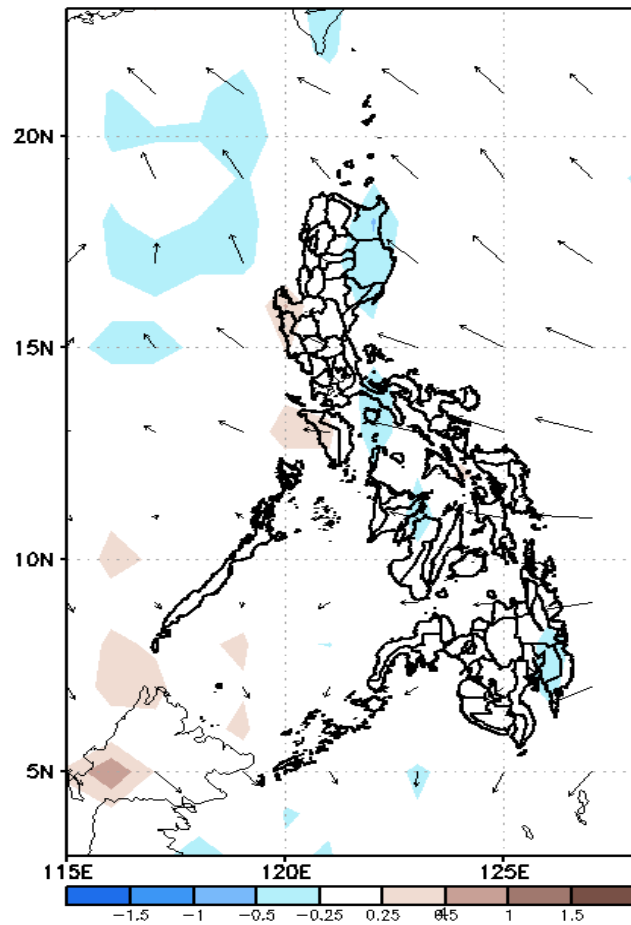


Low probability of rainfall to exceed 200mm in most parts of the country during the forecast period.

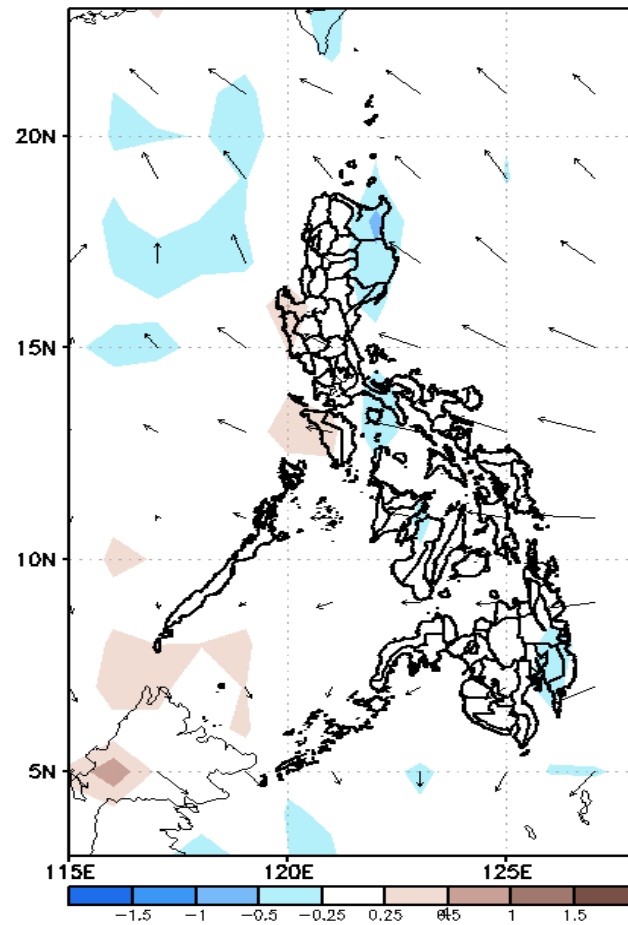
GEFS Week-2 Forecasts: Wind Anomaly Forecast

Week 2: Aug 05 - 11, 2022

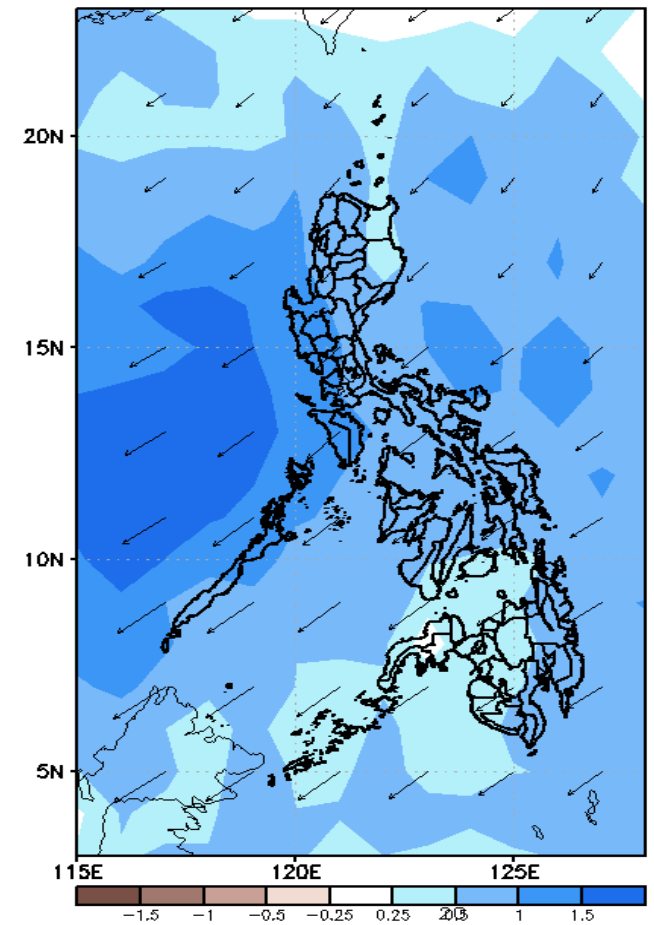
GEFS Week-2 850-hPa Divergence and Wind Anom
Valid: 20220805 - 20220811



GEFS Week-2 700-hPa Divergence and Wind Anom
Valid: 20220805 - 20220811



GEFS week-2 200-hPa Divergence and Wind Anom
Valid: 20220805 - 20220811

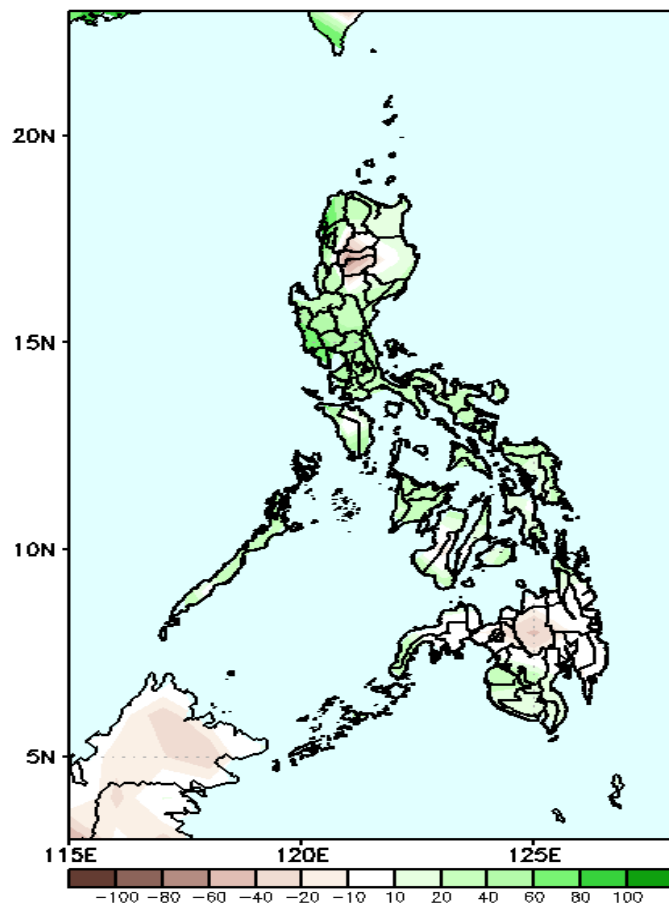


Easterlies affecting most parts of the country during the forecast period.

Precipitation Anomaly and Exceedance Probability > 25/50 mm

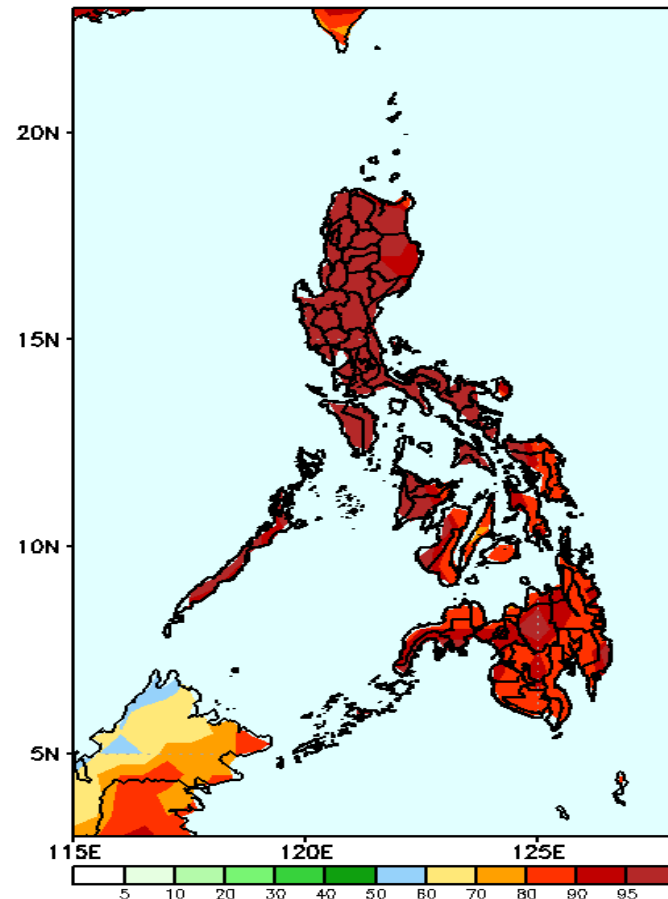
Week 2: Aug 05 - 11, 2022

GEFS Week-2 Precip. Anomaly
Valid: 20220805 - 20220811



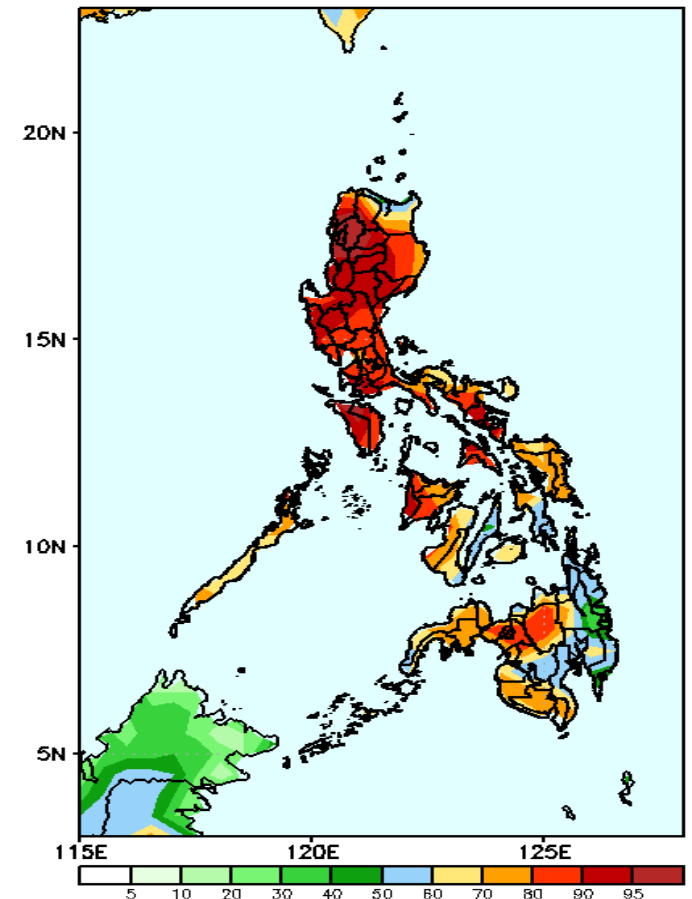
Rainfall increase of 20 – 80mm is expected in most parts of the country except in Mt. Province, Ifugao and Bukidnon where there is 20-50mm rainfall deficit.

GEFS Week-2 Exceedance Prob. > 25mm
Valid: 20220805 - 20220811



High probability of rainfall to exceed 25mm in most parts of the country during the forecast period.

GEFS Week-2 Exceedance Prob. > 50mm
Valid: 20220805 - 20220811



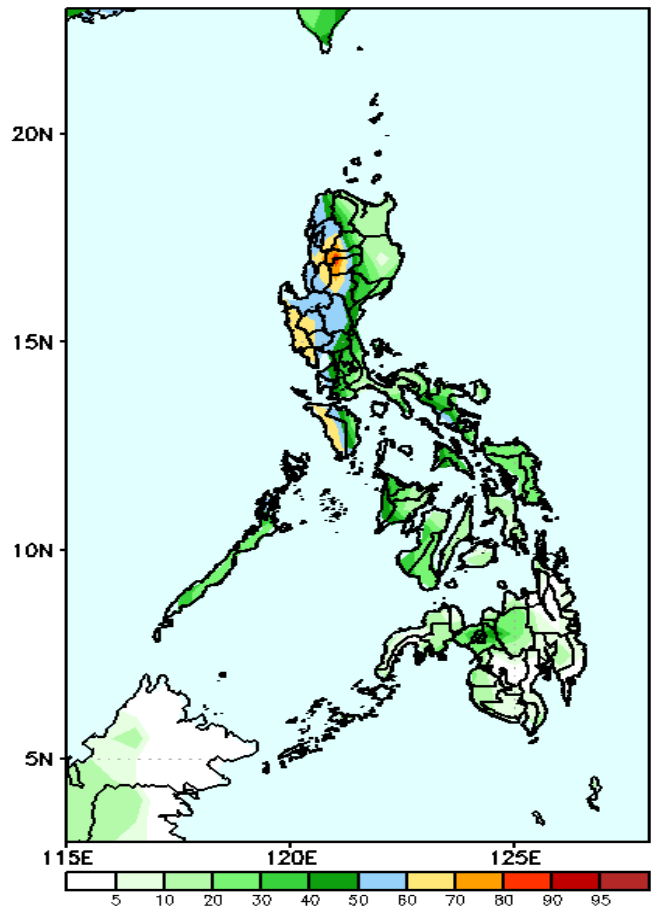
High probability of rainfall to exceed 50mm in most parts of the country except in eastern parts of Mindanao during the forecast period.



Exceedance Probability > 100/150/200 mm

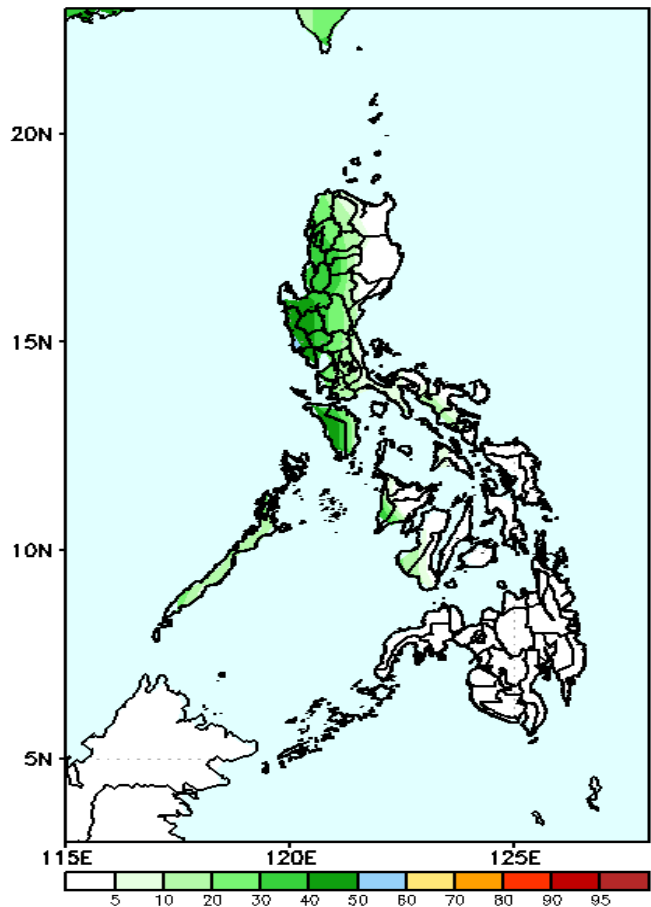
Week 2: Aug 05 - 11, 2022

GEFS Week-2 Exceedance Prob. > 100mm
Valid: 20220805 - 20220811



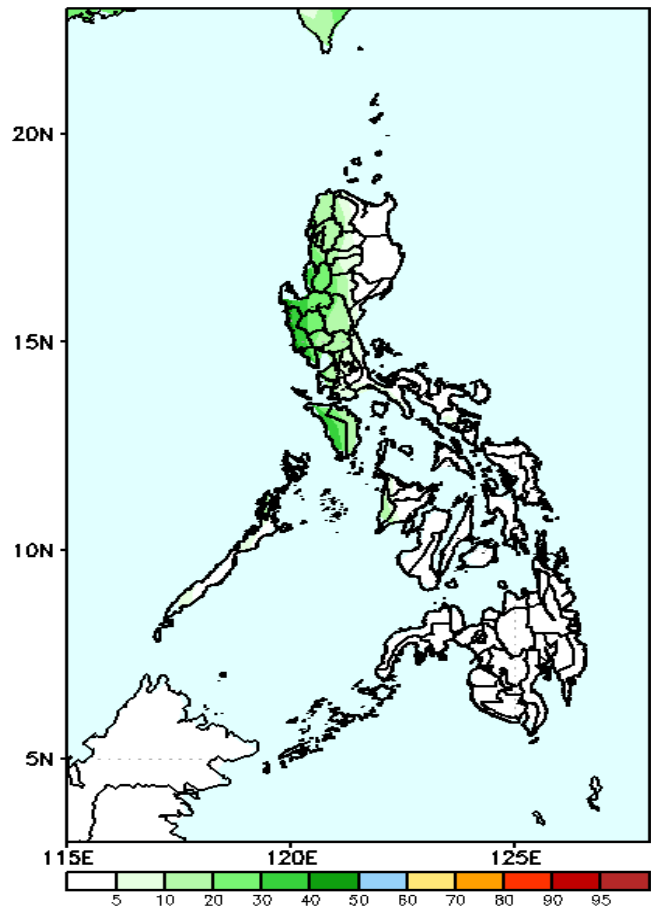
60-85% probability of rainfall to exceed 100mm in western parts of Luzon while less likely for the rest of the country during the forecast period.

GEFS Week-2 Exceedance Prob. > 150mm
Valid: 20220805 - 20220811



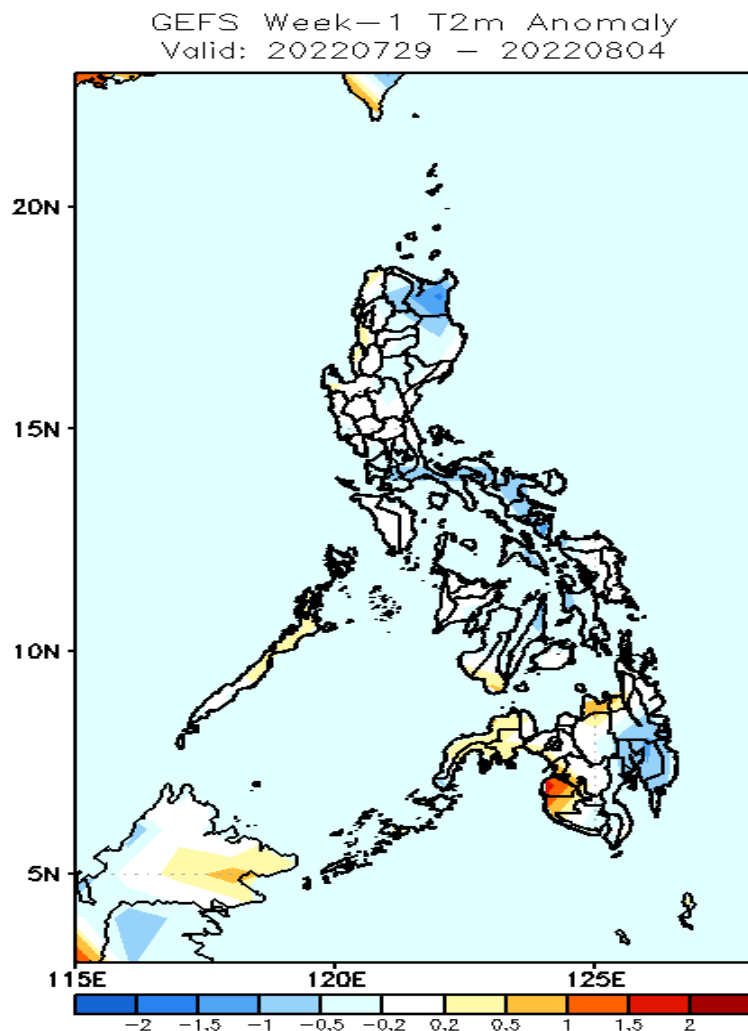
Low probability of rainfall to exceed 150mm in most parts of the country during the forecast period.

GEFS Week-2 Exceedance Prob. > 200mm
Valid: 20220805 - 20220811



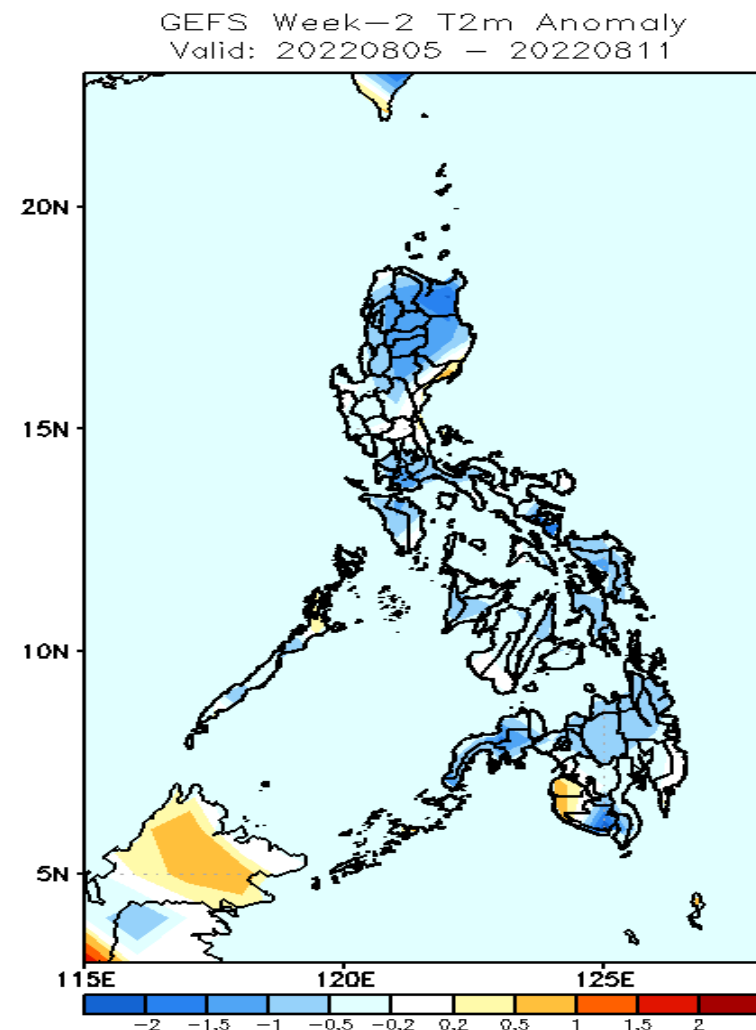
Low probability of rainfall to exceed 200mm in most parts of the country during the forecast period.

GEFS Week-1 & 2 Forecasts: T2m Anomaly



2m Temperature Week 1: Jul 29 – Aug 04, 2022

Near to slightly cooler than average surface air temperature will likely experience in most parts of the country except in Cagayan, Bicol & Davao Region (cooler than average) and Palawan, Misamis Oriental, Maguindanao and Sultan Kudarat (slightly warmer to warmer air temperature).



2m Temperature Week 2: Aug 05 - 11, 2022

Cooler than average surface air temperature will likely experience in most parts of the country except in Central Luzon, Negros Island and Davao Region (near average) and Maguindanao and Sultan Kudarat (slightly warmer).