



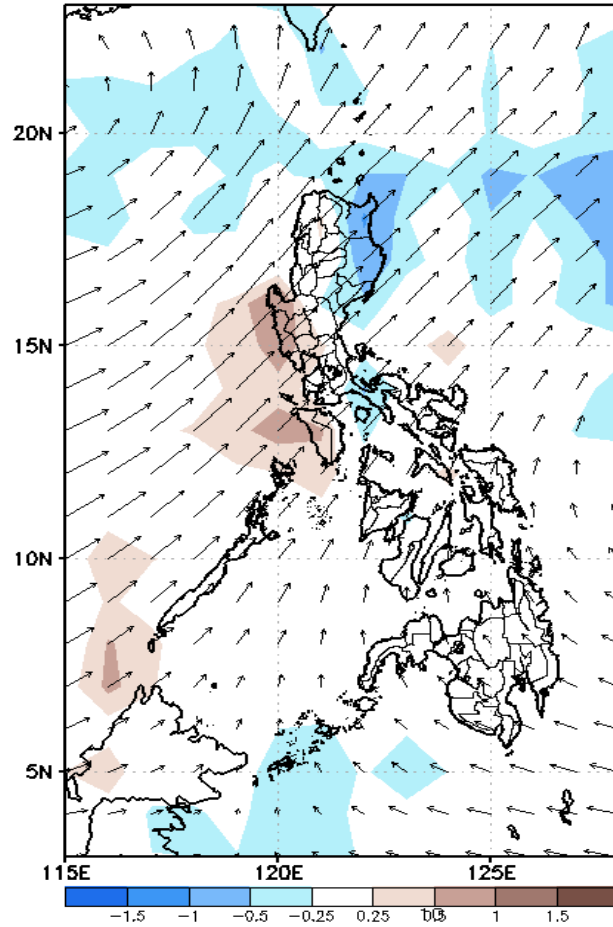
Week 1 & Week 2 Forecast for the Philippines using GEFS Model



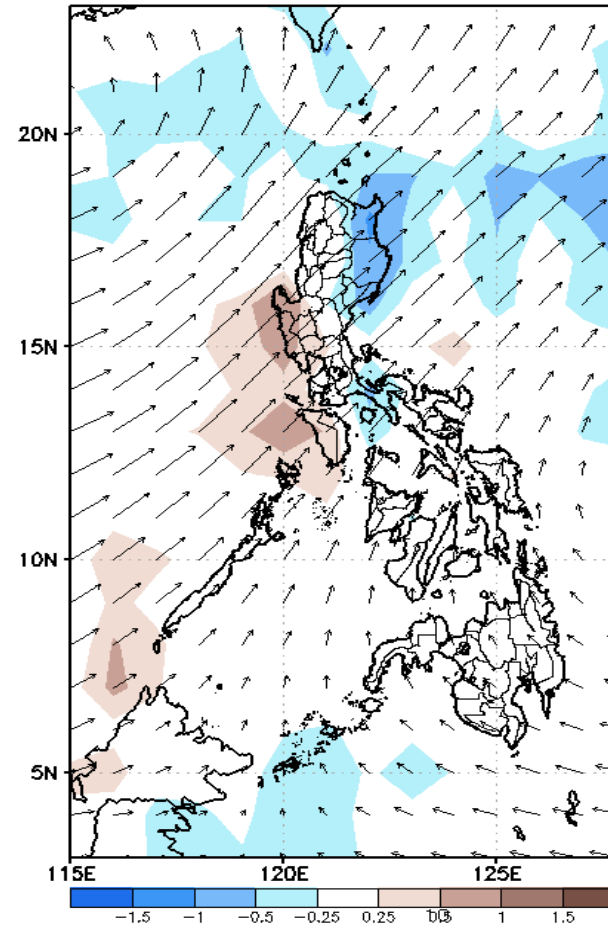
GEFS Week-1 Forecasts: Wind Anomaly Forecast

Week 1: Jun 29- Jul 05, 2022

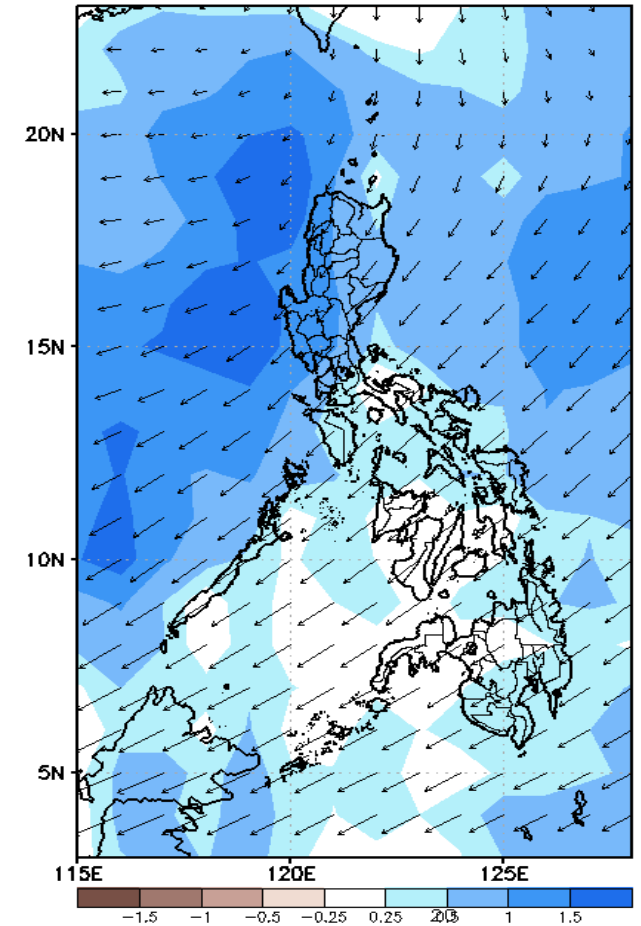
GEFS Week-1 850-hPa Divergence and Wind Anomaly
Valid: 20220629 - 20220705



GEFS Week-1 700-hPa Divergence and Wind Anomaly
Valid: 20220629 - 20220705



GEFS Week-1 200-hPa Divergence and Wind Anomaly
Valid: 20220629 - 20220705

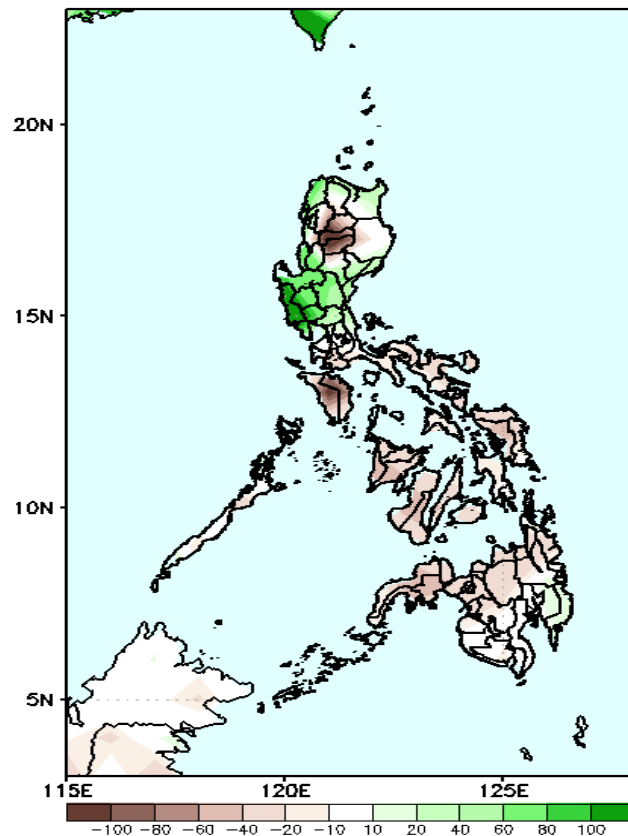


Southwest monsoon affecting most parts of Luzon and western sections of Visayas while Easterlies affecting the rest of the country during the forecast period.

Precipitation Anomaly and Exceedance Probability > 25/50 mm

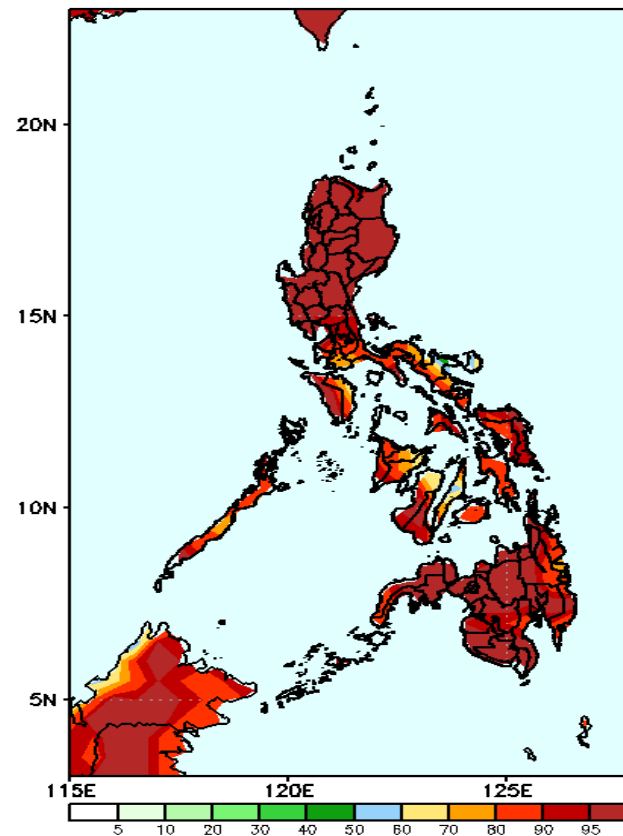
Week 1: Jun 29- Jul 05, 2022

GEFS Week-1 Precip Anomaly
Valid: 20220629 - 20220705



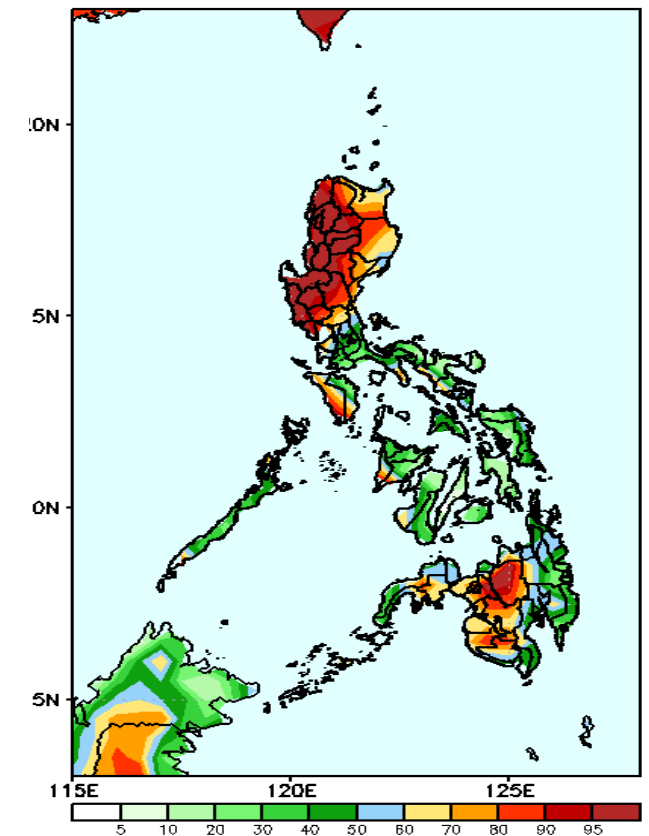
Increase of rainfall of 60-100mm is expected in most parts of Central Luzon, Pangasinan, La Union, Benguet, Ilocos Norte and Quirino while 40-100mm rainfall deficit for the rest of Luzon and most parts of Visayas and Mindanao during the forecast period.

GEFS Week-1 Exceedance Prob. > 25mm
Valid: 20220629 - 20220705



High probability of rainfall to exceed 25mm in most parts of the country during the forecast period.

GEFS Week-1 Exceedance Prob. > 50mm
Valid: 20220629 - 20220705



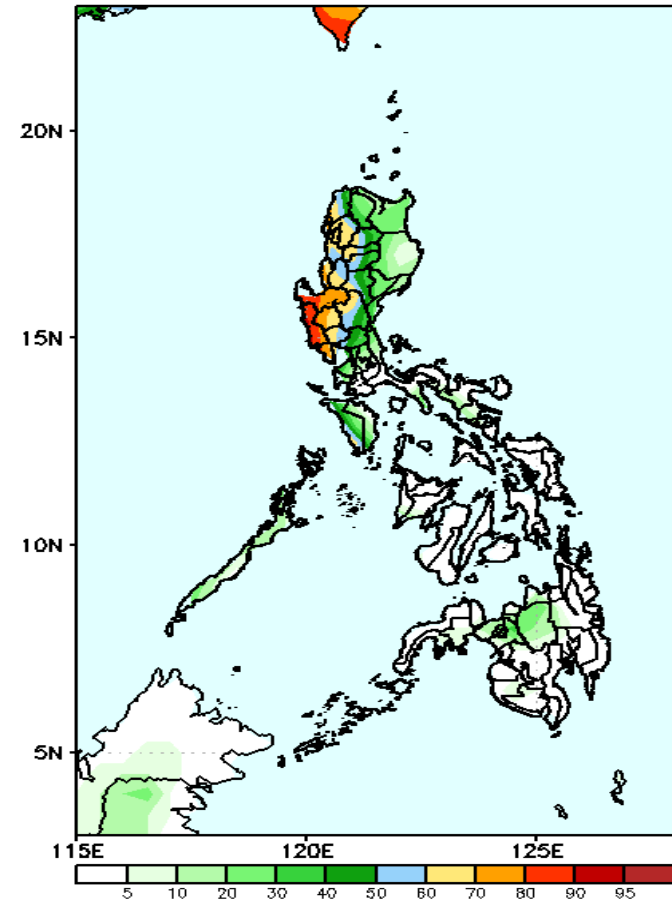
High probability of rainfall to exceed 50mm in most parts of Luzon, Bukidnon and western section of Mindanao while less likely for the rest of the country during the forecast period.



Exceedance Probability > 100/150/200 mm

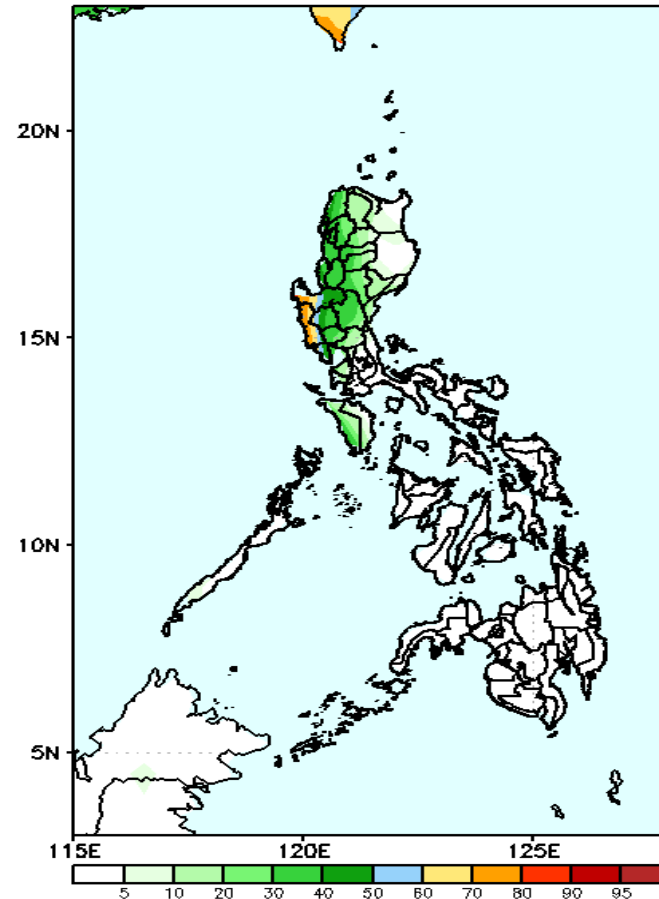
Week 1: Jun 29- Jul 05, 2022

GEFS Week-1 Exceedance Prob. > 100mm
Valid: 20220629 - 20220705



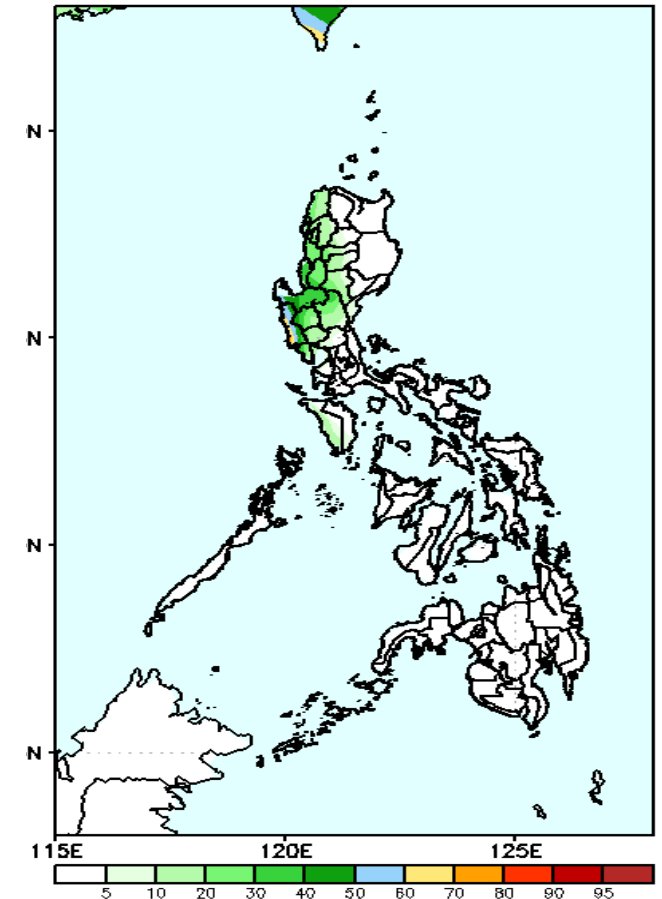
60-95% probability of rainfall to exceed 100mm in Ilocos Region and western parts of Central Luzon while less likely for the rest of the country during the forecast period.

GEFS Week-1 Exceedance Prob. > 150mm
Valid: 20220629 - 20220705



Low probability of rainfall to exceed 150mm in most parts of the country during the forecast period.

GEFS Week-1 Exceedance Prob. > 200mm
Valid: 20220629 - 20220705



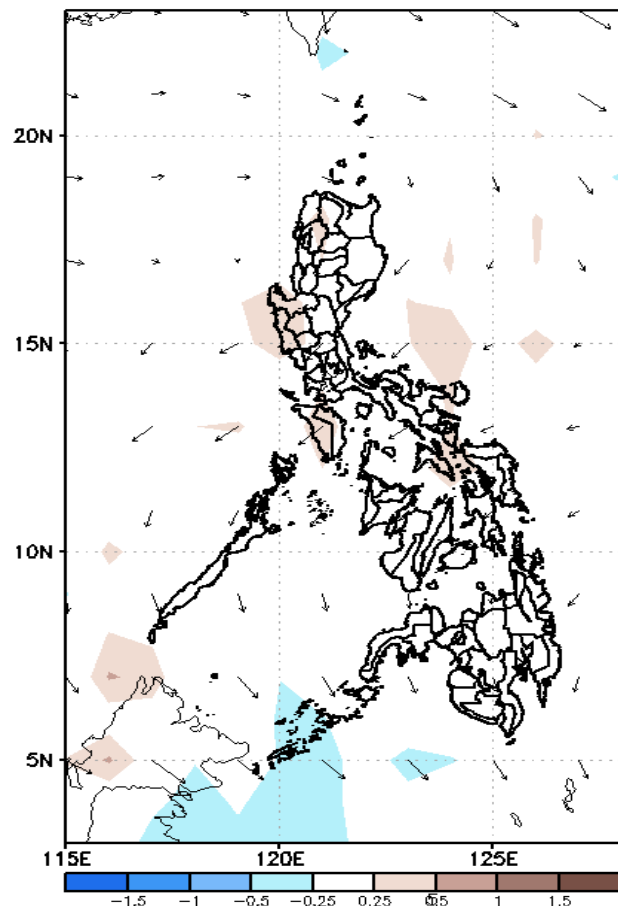
Low probability of rainfall to exceed 200mm in most parts of the country during the forecast period.



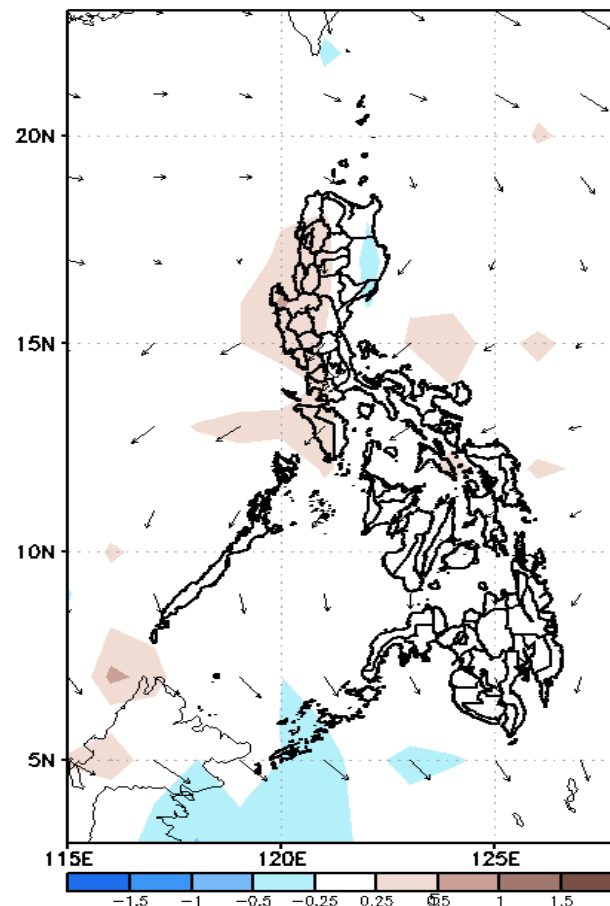
GEFS Week-2 Forecasts: Wind Anomaly Forecast

Week 2: Jul 06-12, 2022

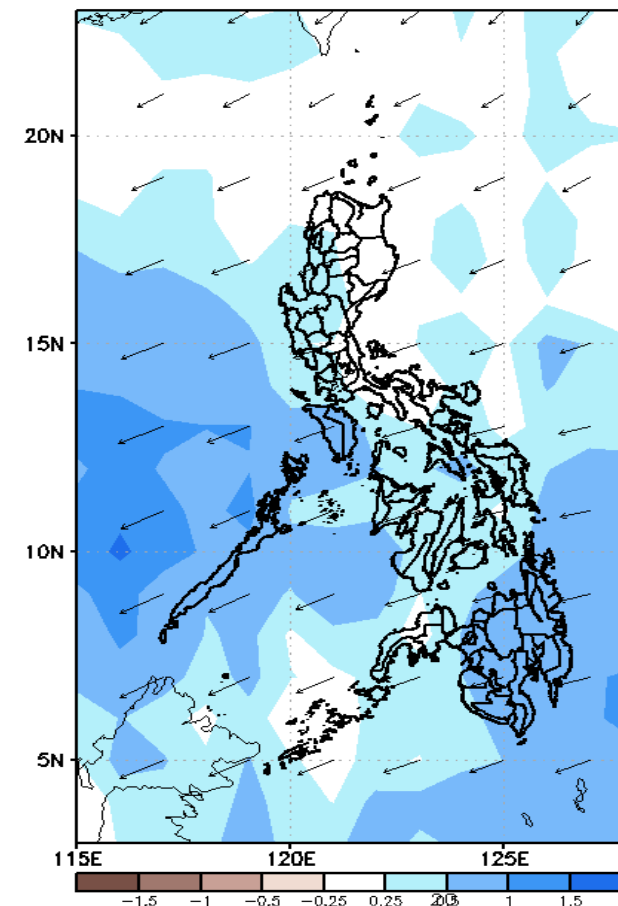
GEFS Week-2 850-hPa Divergence and Wind Anom
Valid: 20220706 - 20220712



GEFS Week-2 700-hPa Divergence and Wind Anom
Valid: 20220706 - 20220712



GEFS week-2 200-hPa Divergence and Wind Anom
Valid: 20220706 - 20220712



Southwest monsoon the western sections of Visayas and Mindanao while Easterlies affecting the rest of the country during the forecast period.

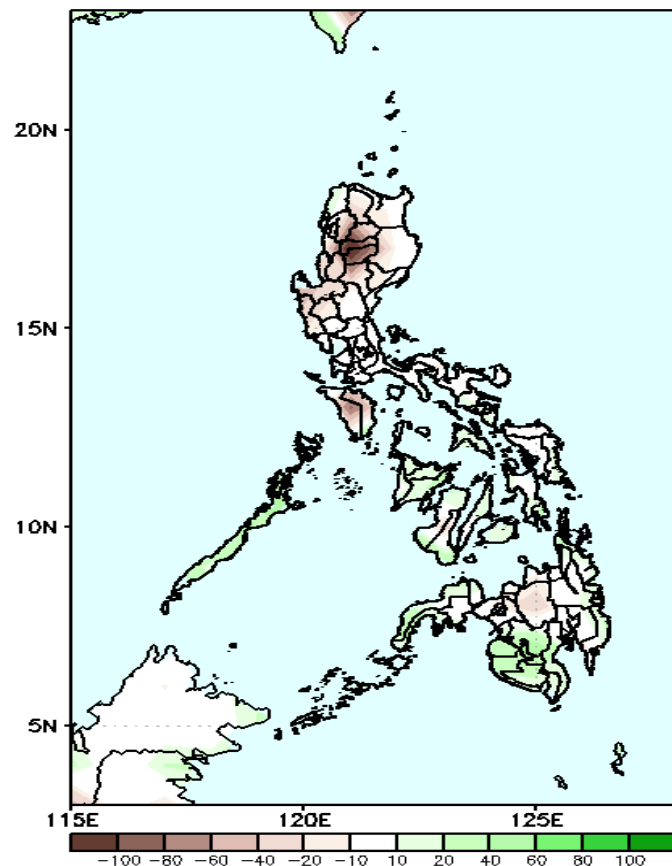
long
GASA



Precipitation Anomaly and Exceedance Probability > 25/50 mm

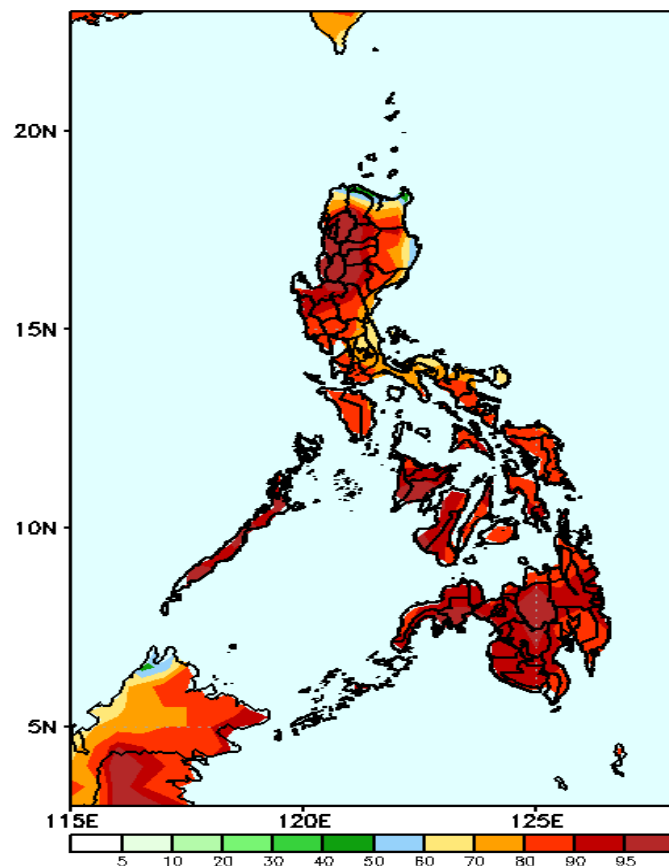
Week 2: Jul 06-12, 2022

GEFS Week-2 Precip Anomaly
Valid: 20220706 - 20220712



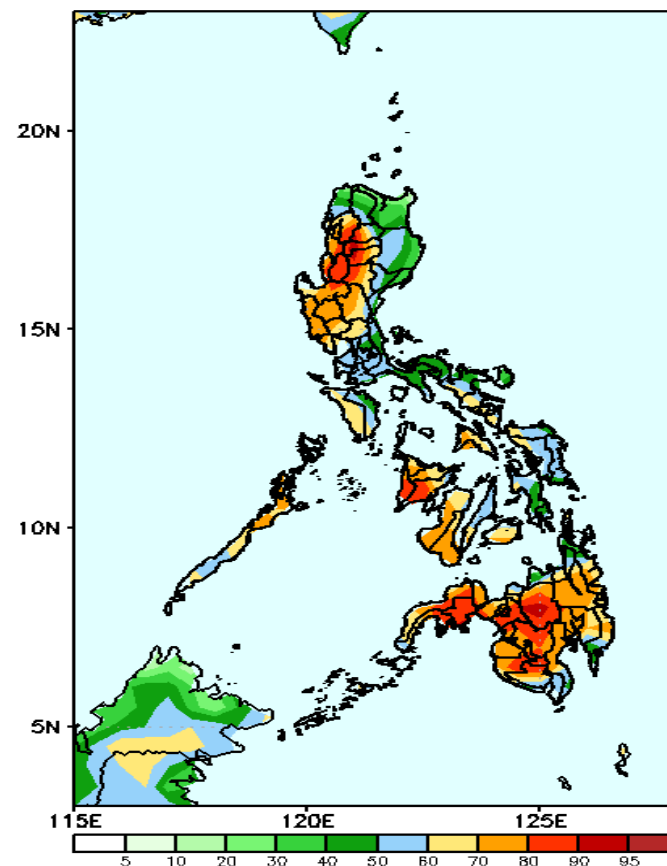
Rainfall deficit of 50-60mm is expected in Cordillera Region and Mindoro while 20-50mm increase of rainfall in Palawan and western Mindanao during the forecast period.

GEFS Week-2 Exceedance Prob. > 25mm
Valid: 20220706 - 20220712



High probability of rainfall to exceed 25mm in most parts of the country during the forecast period.

GEFS Week-2 Exceedance Prob. > 50mm
Valid: 20220706 - 20220712

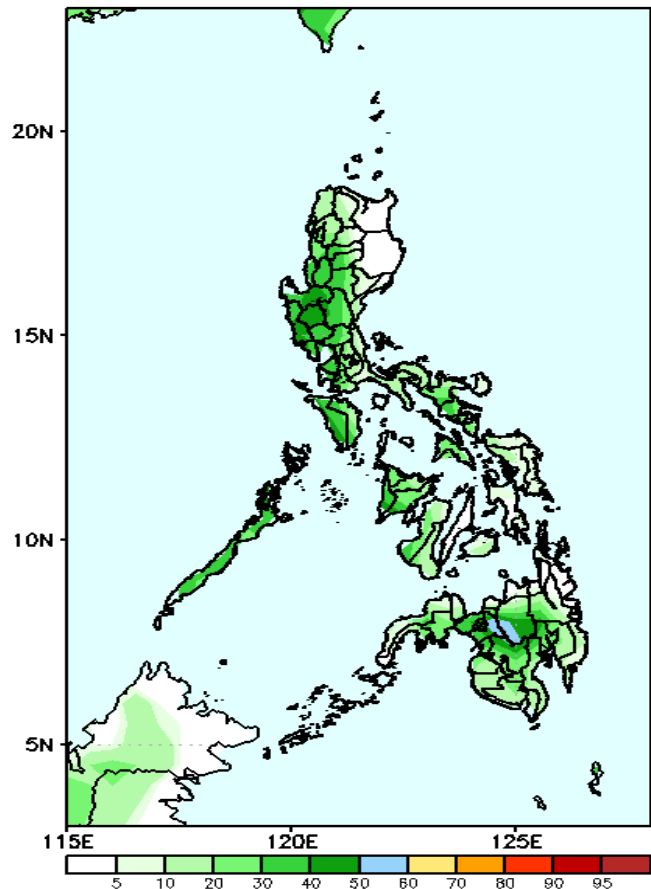


High probability of rainfall to exceed 50mm in most parts the country except in extreme parts of Northern Luzon, Isabela, Quirino and Bicol Region during the forecast period

Exceedance Probability > 100/150/200 mm

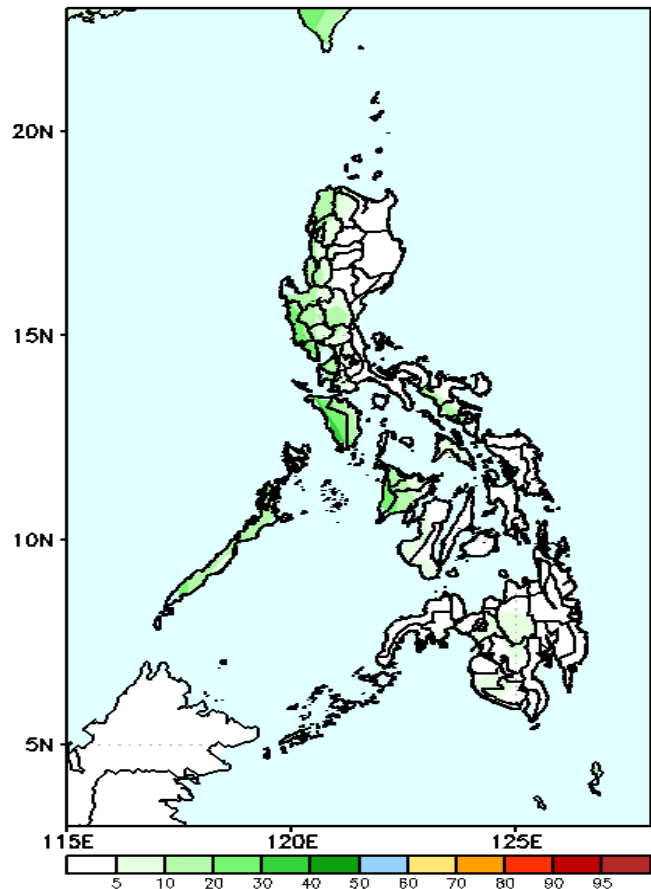
Week 2: Jul 06-12, 2022

GEFS Week-2 Exceedance Prob. > 100mm
Valid: 20220706 – 20220712



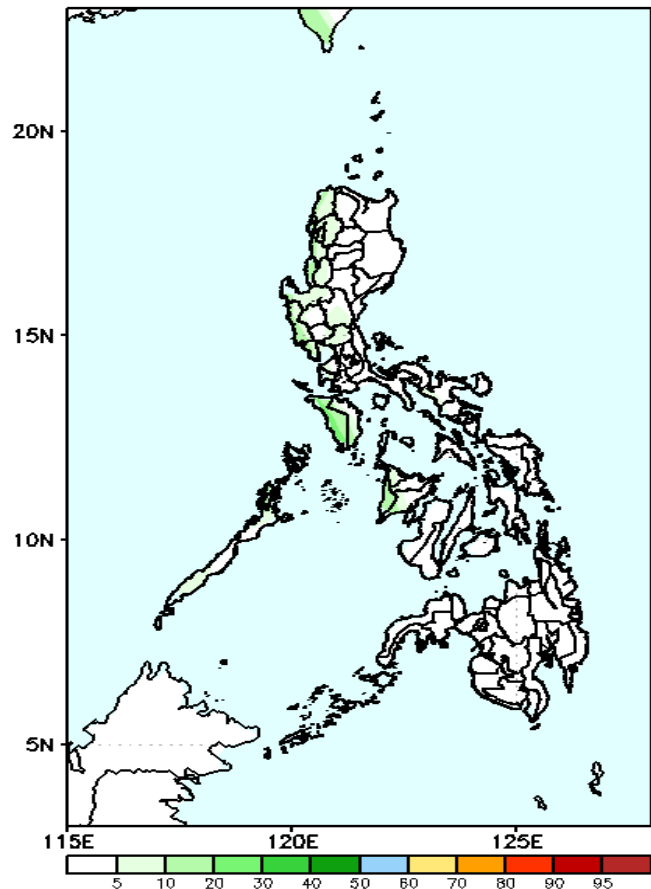
Low probability of rainfall to exceed 100mm in most parts of the country during the forecast period.

GEFS Week-2 Exceedance Prob. > 150mm
Valid: 20220706 – 20220712



Low probability of rainfall to exceed 150mm in most parts of the country during the forecast period.

GEFS Week-2 Exceedance Prob. > 200mm
Valid: 20220706 – 20220712

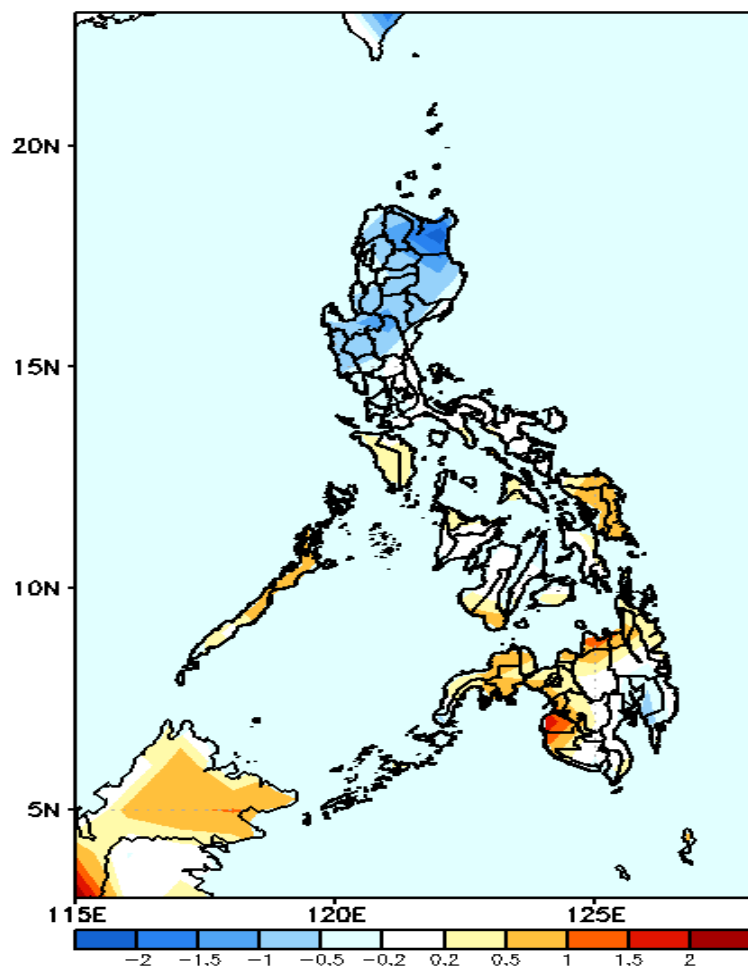


Low probability of rainfall to exceed 200mm in most parts of the country during the forecast period.



GEFS Week-1 & 2 Forecasts: T2m Anomaly

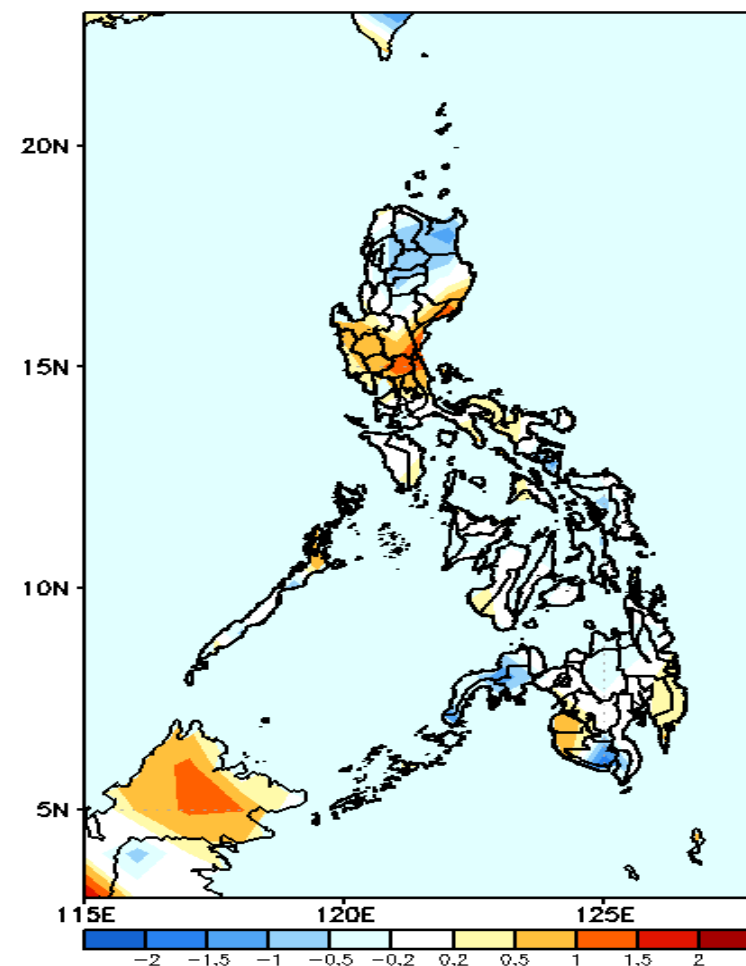
GEFS Week-1 T2m Anomaly
Valid: 20220629 — 20220705



2m Temperature Week 1: Jun 29- Jul 05, 2022

Slightly cooler to cooler surface air temperature will likely experience in most parts of Luzon while average to warmer in Visayas and Mindanao during the forecast period.

GEFS Week-2 T2m Anomaly
Valid: 20220706 — 20220712



2m Temperature Week 2: Jul 06-12, 2022

Slightly cooler than surface air temperature will likely experience in Northern Luzon, Zamboanga Peninsula and South Cotabato while average to warmer temperature for the rest of the country during the forecast period.