



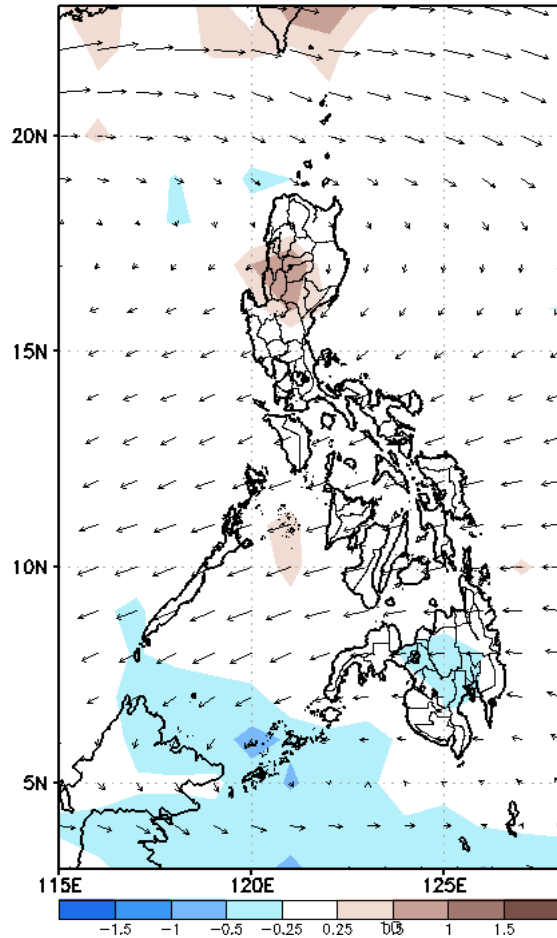
# Week 1 & Week 2 Forecast for the Philippines using GEFS Model



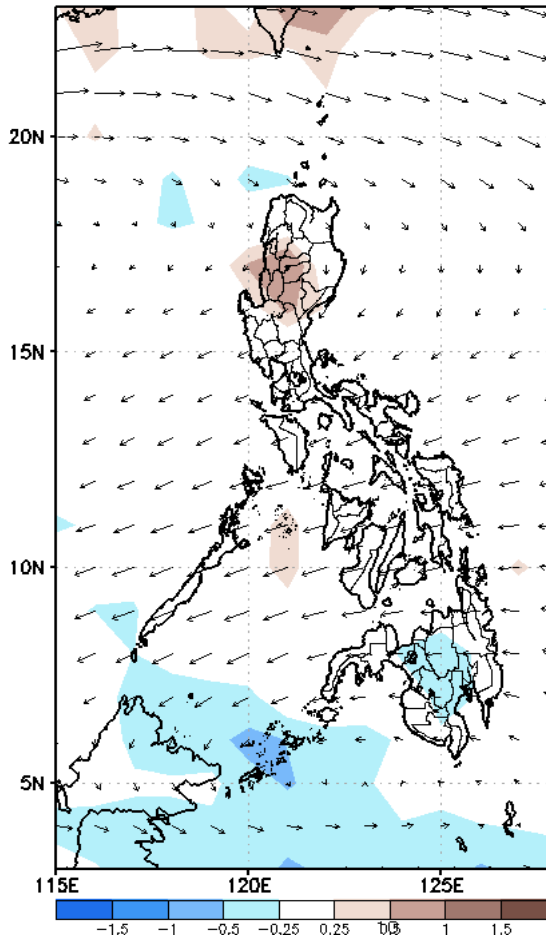
# GEFS Week-1 Forecasts: Wind Anomaly Forecast

Week 1: Mar 27-Apr 02, 2023

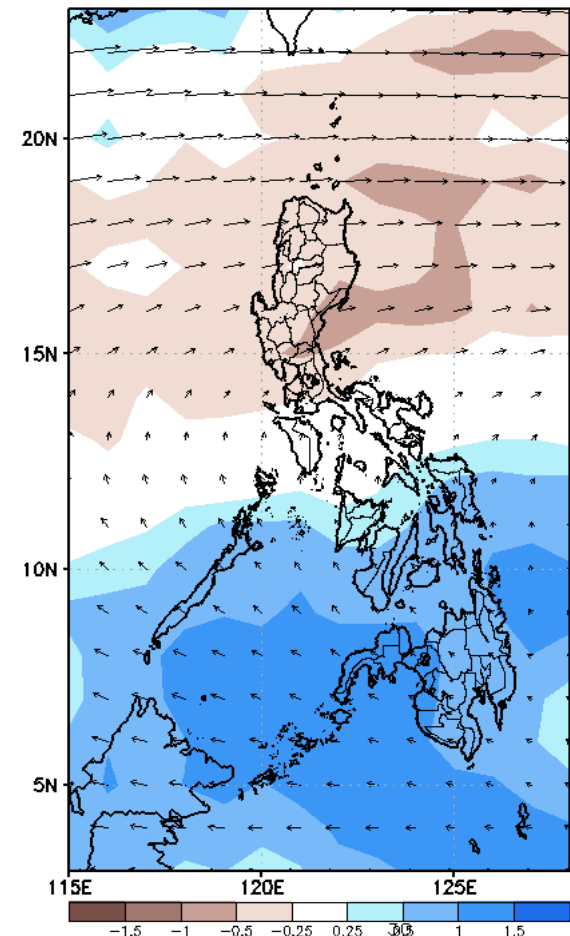
GEFS Week-1 850-hPa Divergence and Wind Anomaly  
Valid: 20230329 - 20230404



GEFS Week-1 700-hPa Divergence and Wind Anomaly  
Valid: 20230329 - 20230404



GEFS Week-1 200-hPa Divergence and Wind Anomaly  
Valid: 20230329 - 20230404



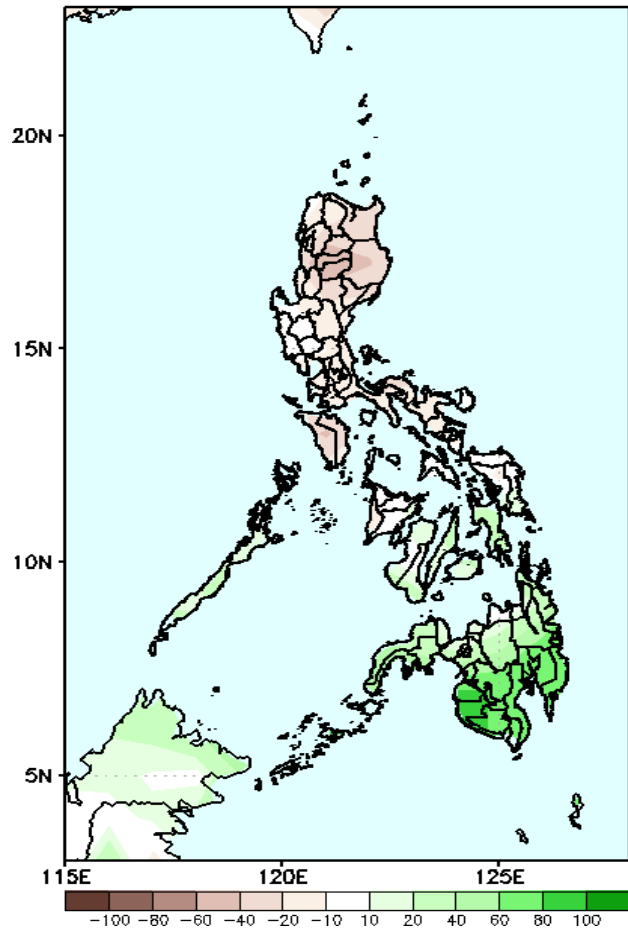
Easterlies is forecasted to affect most parts of the country; expect dry and hot weather during the forecast period.

# Precipitation Anomaly and Exceedance Probability > 25/50 mm

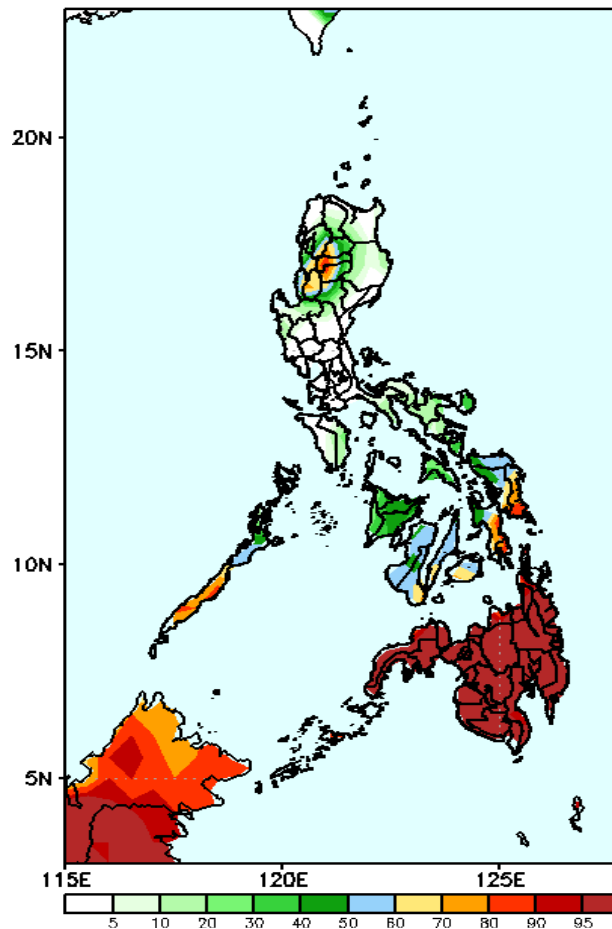
- Very high probability
- High Probability
- Moderate Probability
- Low Probability

Week 1: Mar 27-Apr 02, 2023

GEFS Week-1 Precip Anomaly  
Valid: 20230329 - 20230404

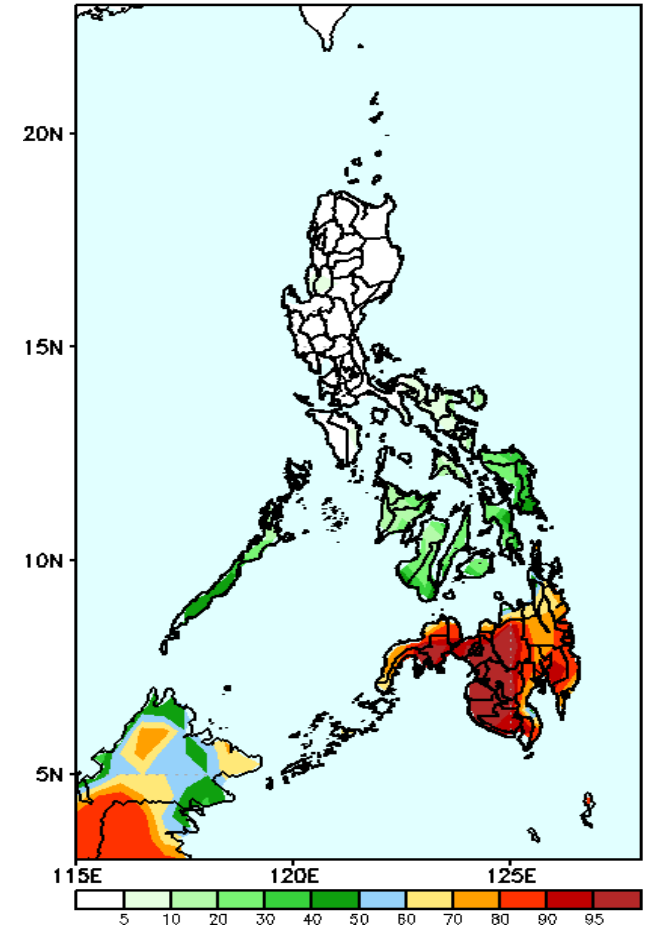


GEFS Week-1 Exceedance Prob. > 25mm  
Valid: 20230329 - 20230404



High to very high probability of rainfall to exceed 25mm in Mindanao; moderate to high probability in Eastern and Central Visayas, Negros Occidental, Palawan and some portion of CAR while low chance over the rest of the country.

GEFS Week-1 Exceedance Prob. > 50mm  
Valid: 20230329 - 20230404



Moderate to high probability of rainfall to exceed 50mm in Mindanao while low chance over the rest of the country.

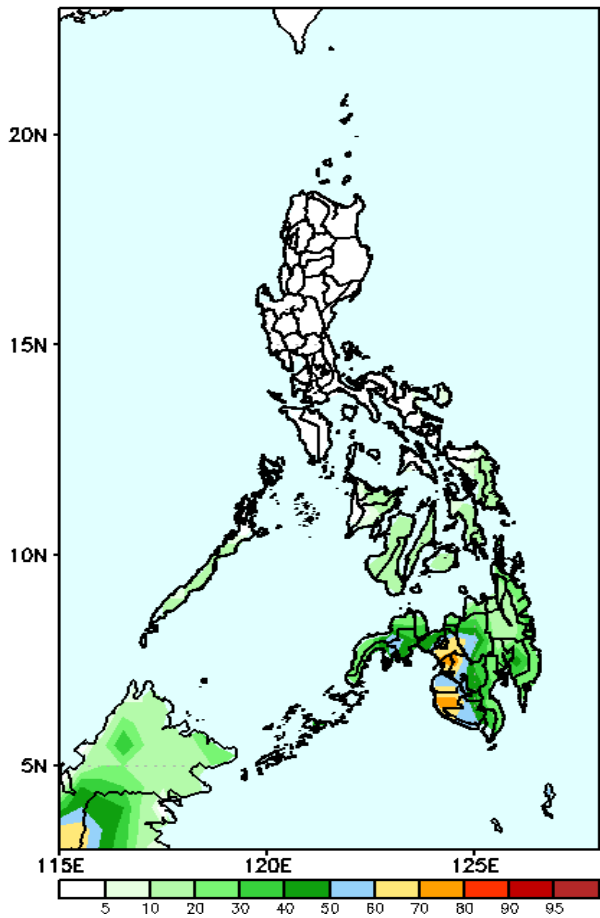
Rainfall deficit of 20-60mm is expected in most parts Luzon, Panay and Samar Island while the rest of Visayas and Mindanao will likely have 40-80mm increase of rainfall during the forecast period.



# Exceedance Probability > 100/150/200 mm

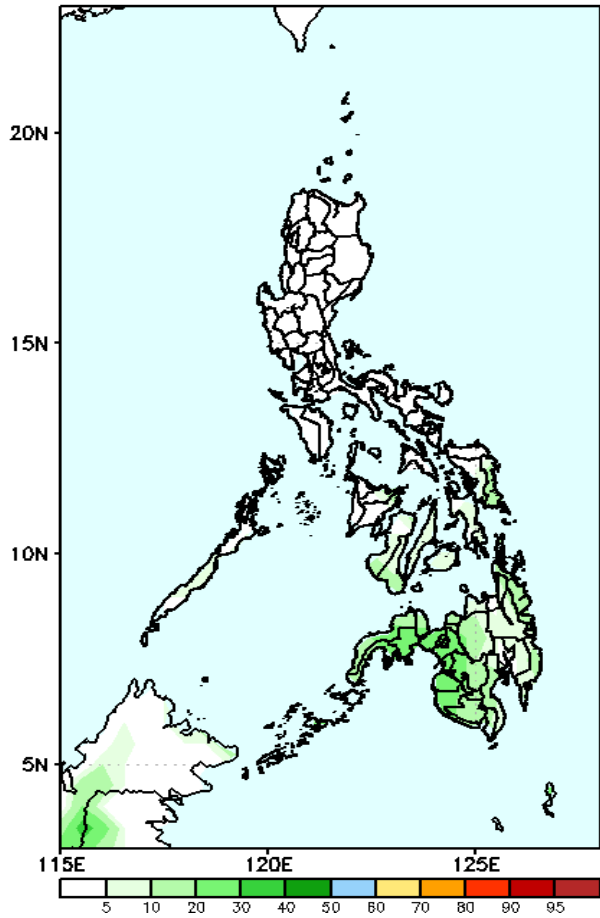
Week 1: Mar 27-Apr 02, 2023

GEFS Week-1 Exceedance Prob. > 100mm  
Valid: 20230329 – 20230404



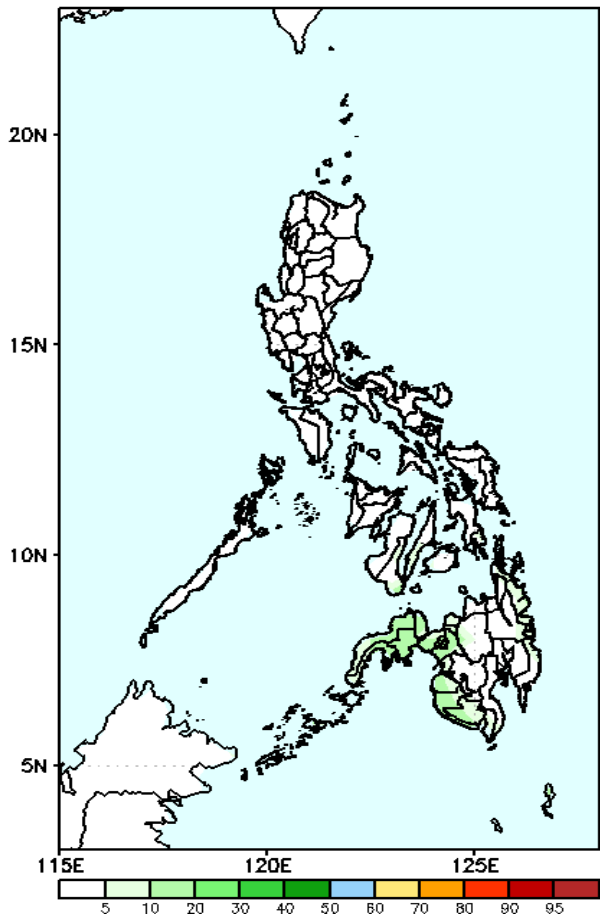
Moderate to high probability of rainfall to exceed 100mm in some portions of western and central part of Mindanao while low chance over the rest of the country.

GEFS Week-1 Exceedance Prob. > 150mm  
Valid: 20230329 – 20230404



Low probability of rainfall to exceed 150mm in most parts of the country during the forecast period.

GEFS Week-1 Exceedance Prob. > 200mm  
Valid: 20230329 – 20230404

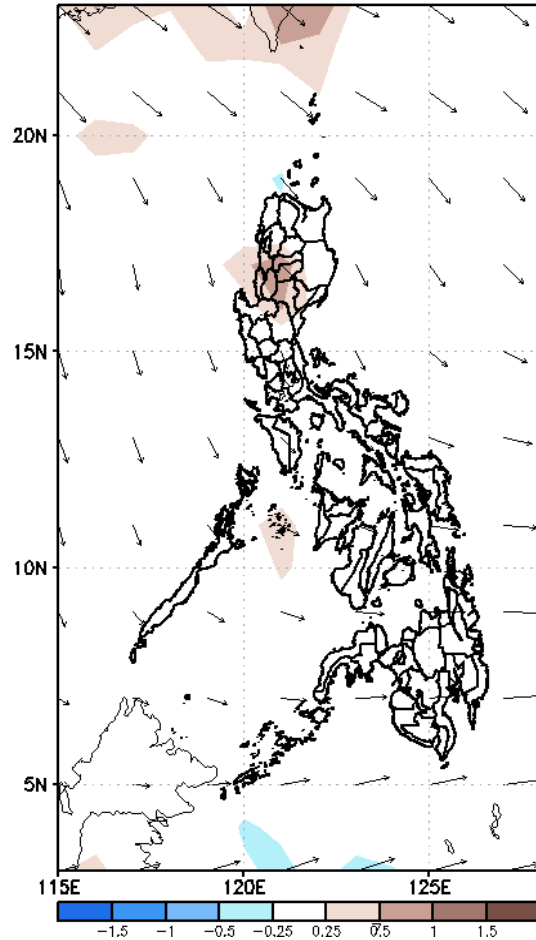


Low probability of rainfall to exceed 200mm in most parts of the country during the forecast period.

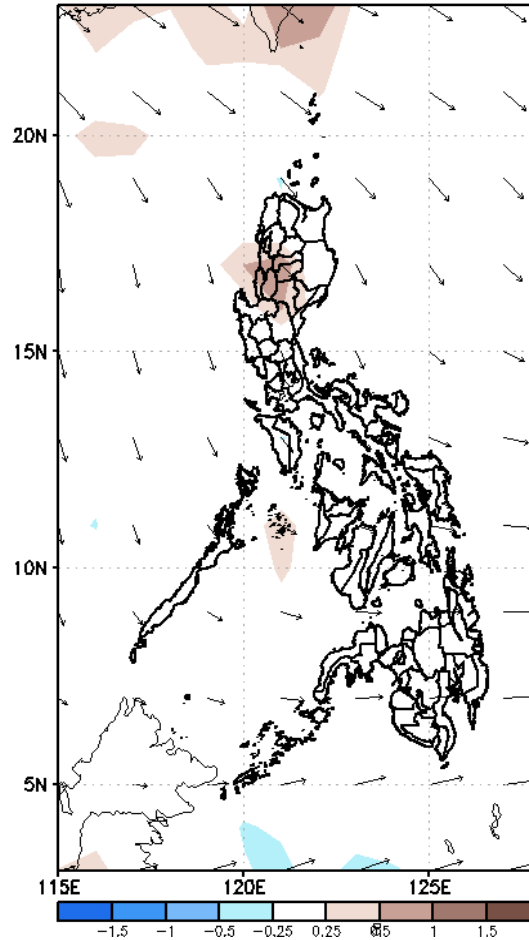
# GEFS Week-2 Forecasts: Wind Anomaly Forecast

Week 2: Mar 31-Apr 06, 2023

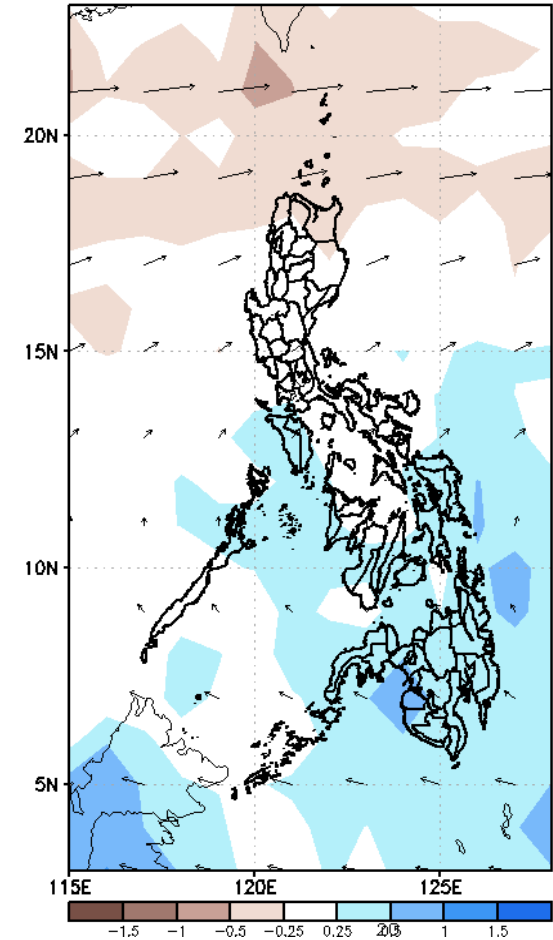
GEFS Week-2 850-hPa Divergence and Wind Anomaly  
Valid: 20230405 - 20230411



GEFS Week-2 700-hPa Divergence and Wind Anomaly  
Valid: 20230405 - 20230411

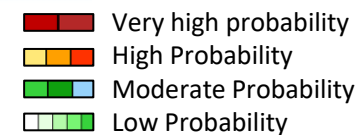


GEFS week-2 200-hPa Divergence and Wind Anomaly  
Valid: 20230405 - 20230411



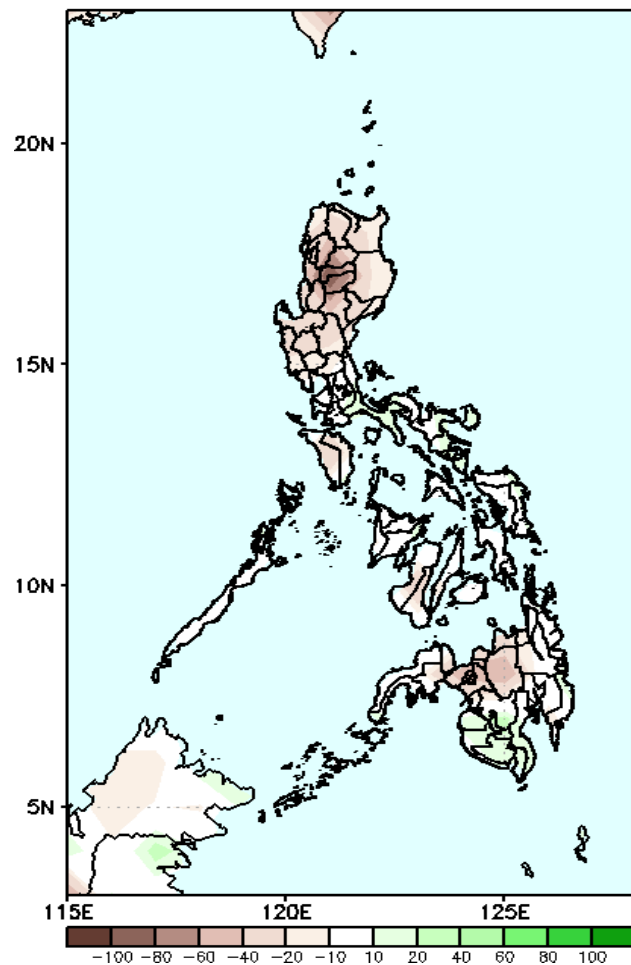
Easterlies is forecasted to affect most parts of the country; expect dry and hot weather during the forecast period.

# Precipitation Anomaly and Exceedance Probability > 25/50 mm



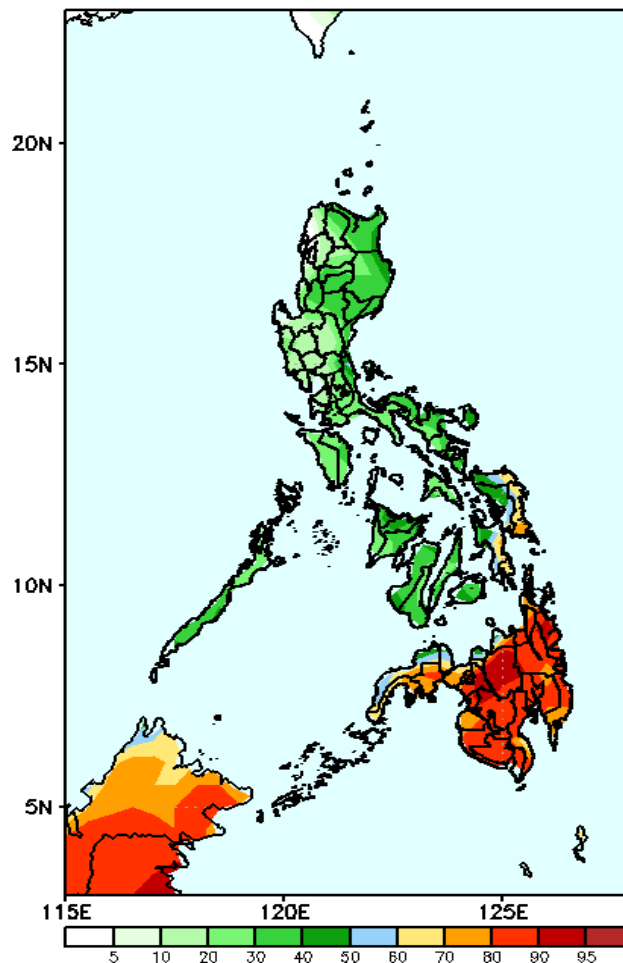
Week 2: Mar 31-Apr 06, 2023

GEFS Week-2 Precip Anomaly  
Valid: 20230405 - 20230411



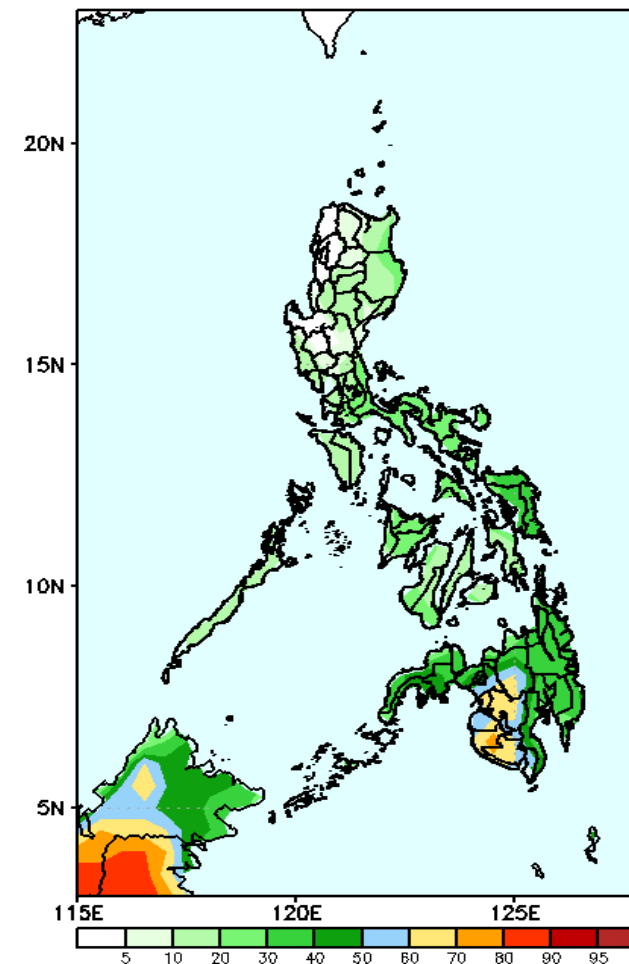
Rainfall deficit of 20-80mm is expected in most parts of the country except in SOCCSKARGEN and Cotabato where an increase of 20-40mm of rainfall will be likely during the forecast period.

GEFS Week-2 Exceedance Prob. > 25mm  
Valid: 20230405 - 20230411



High to very high probability of rainfall to exceed 25mm in most parts of Mindanao; moderate to high probability in Eastern Visayas while low chance over the rest of the country.

GEFS Week-2 Exceedance Prob. > 50mm  
Valid: 20230405 - 20230411



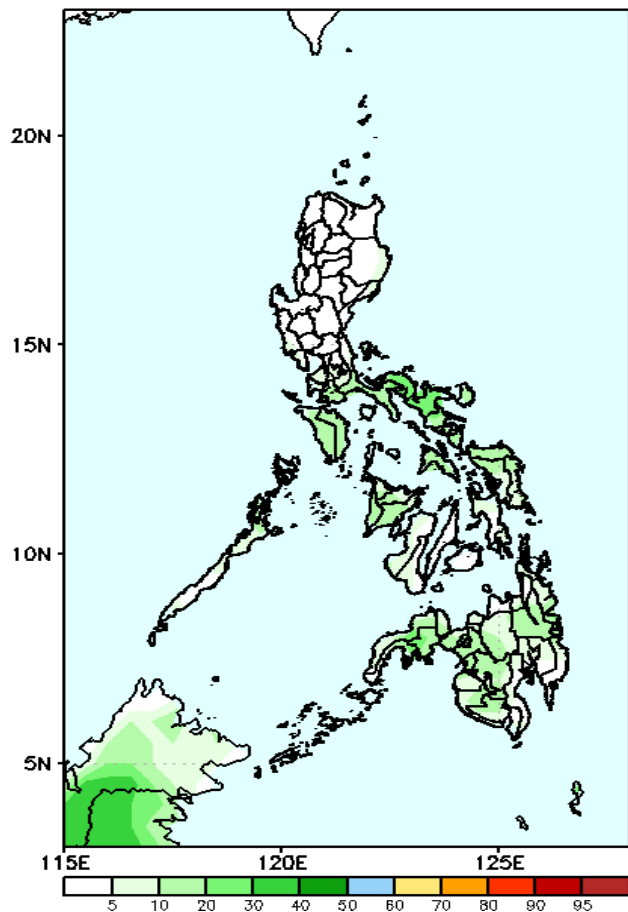
Moderate to high probability of rainfall to exceed 50mm in some portions of western and central part of Mindanao while low chance over the rest of the country.



# Exceedance Probability > 100/150/200 mm

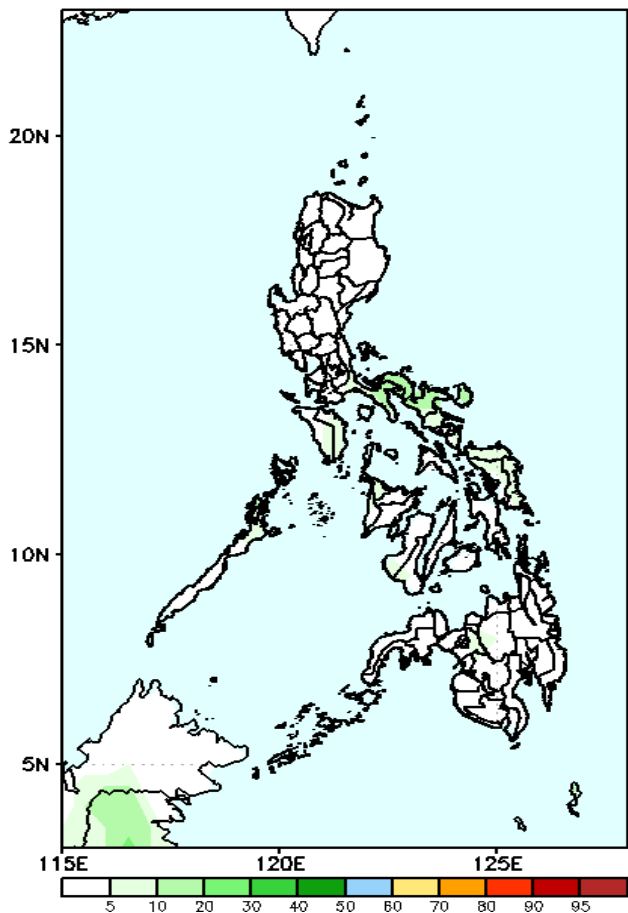
Week 2: Mar 31-Apr 06, 2023

GEFS Week-2 Exceedance Prob. > 100mm  
Valid: 20230405 – 20230411



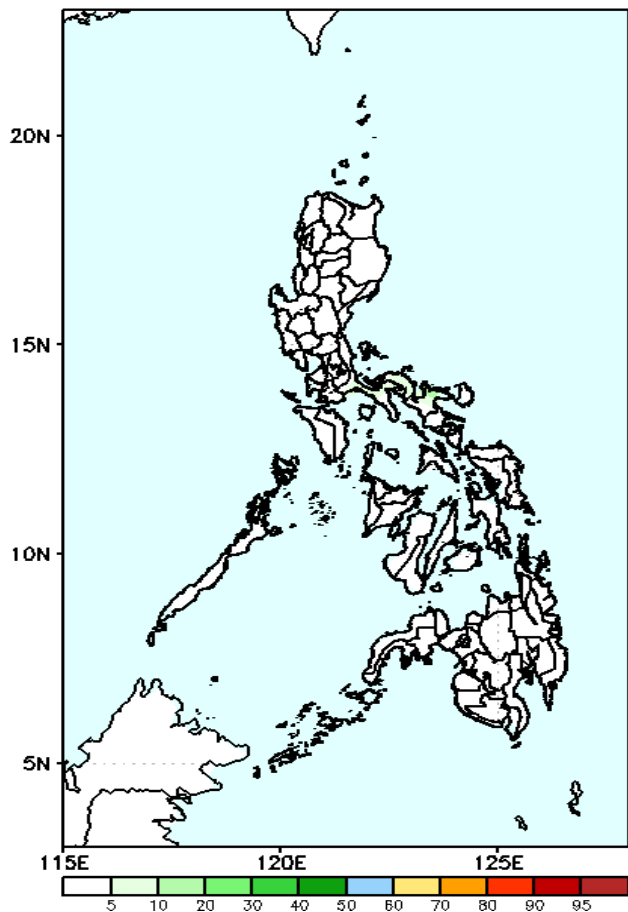
Low probability of rainfall to exceed 100mm in most parts of the country during the forecast period.

GEFS Week-2 Exceedance Prob. > 150mm  
Valid: 20230405 – 20230411



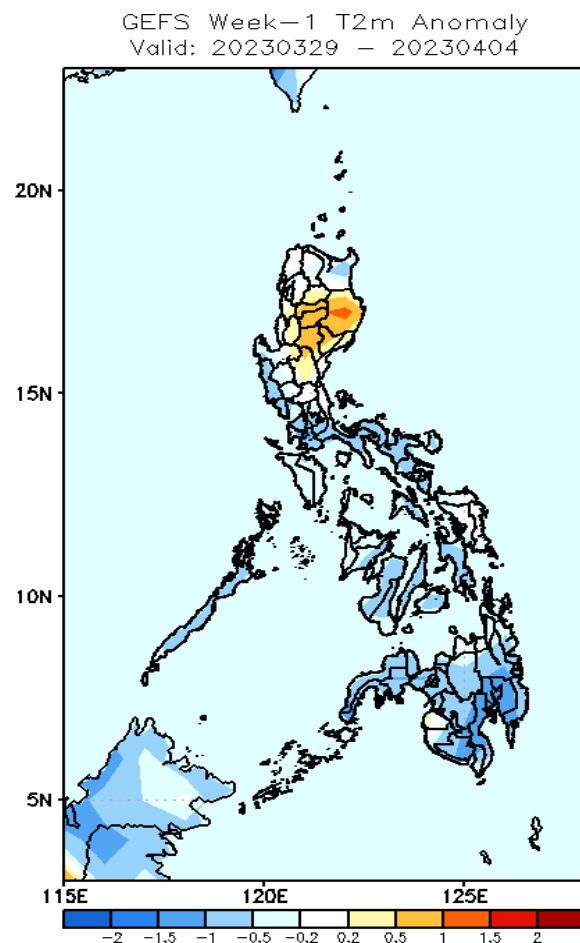
Low probability of rainfall to exceed 150mm in most parts of the country during the forecast period.

GEFS Week-2 Exceedance Prob. > 200mm  
Valid: 20230405 – 20230411



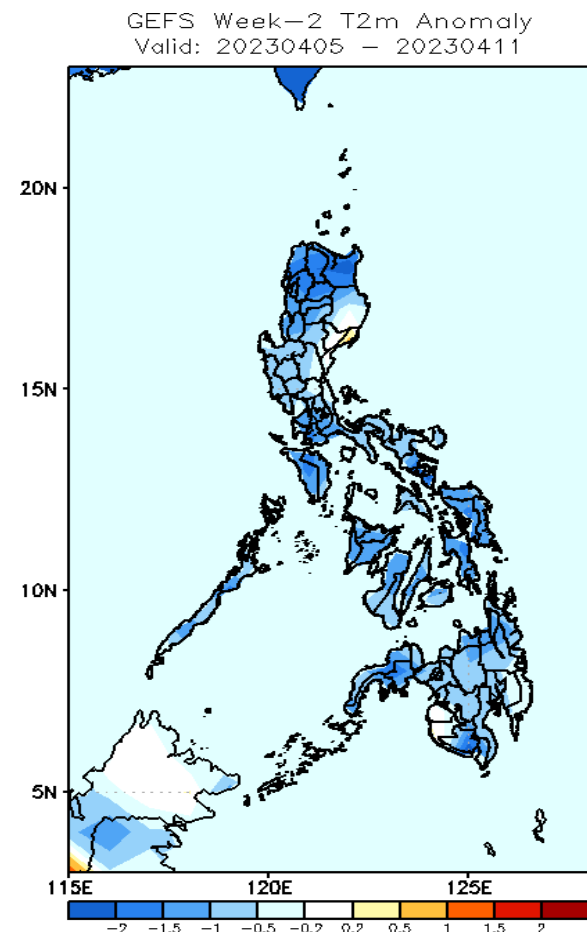
Low probability of rainfall to exceed 200mm in most parts of the country during the forecast period.

# GEFS Week-1 & 2 Forecasts: T2m Anomaly



## 2m Temperature Week 1: Mar 29-Apr 04, 2023

Slightly warmer than average surface air temperature will likely experience in most parts of CAR, Cagayan Valley and Nueva Ecija while the rest of the country will likely have average to slightly cooler temperature during the forecast period.



## 2m Temperature Week 2: Apr 05-11, 2023

Average to cooler than average surface air temperature will likely experience in most parts of the country during the forecast period.