



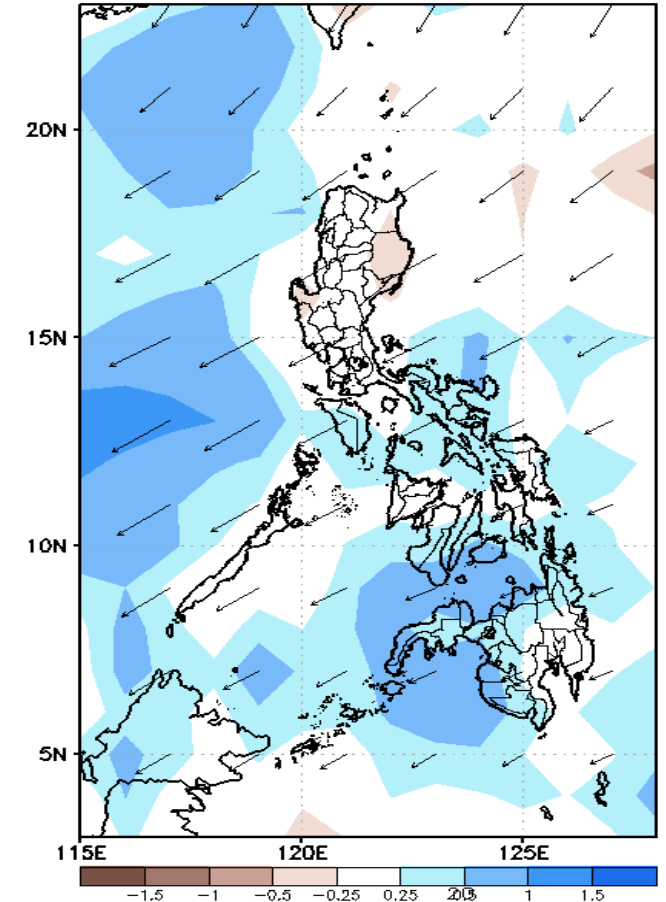
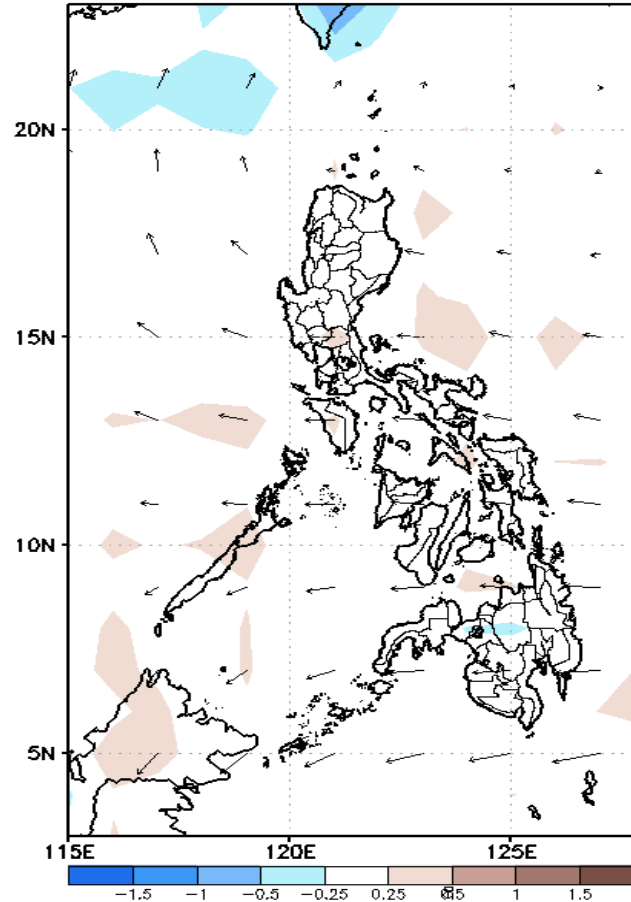
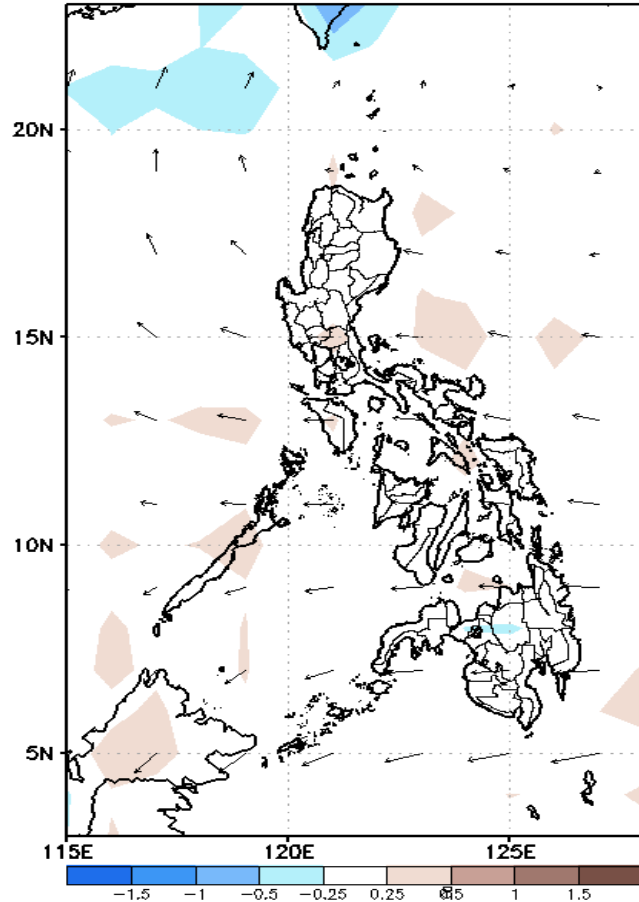
Week 1 & Week 2 Forecast for the Philippines using GEFS Model



GEFS Week-1 Forecasts: Divergence & Wind Anomaly

Week 1: June 29-Jul 05, 2020

GEFS Week-1 850-hPa Divergence and Wind Anom GEFS Week-1 700-hPa Divergence and Wind Anom GEFS Week-1 200-hPa Divergence and Wind Anom
Valid: 20200629 - 20200705 Valid: 20200629 - 20200705 Valid: 20200629 - 20200705



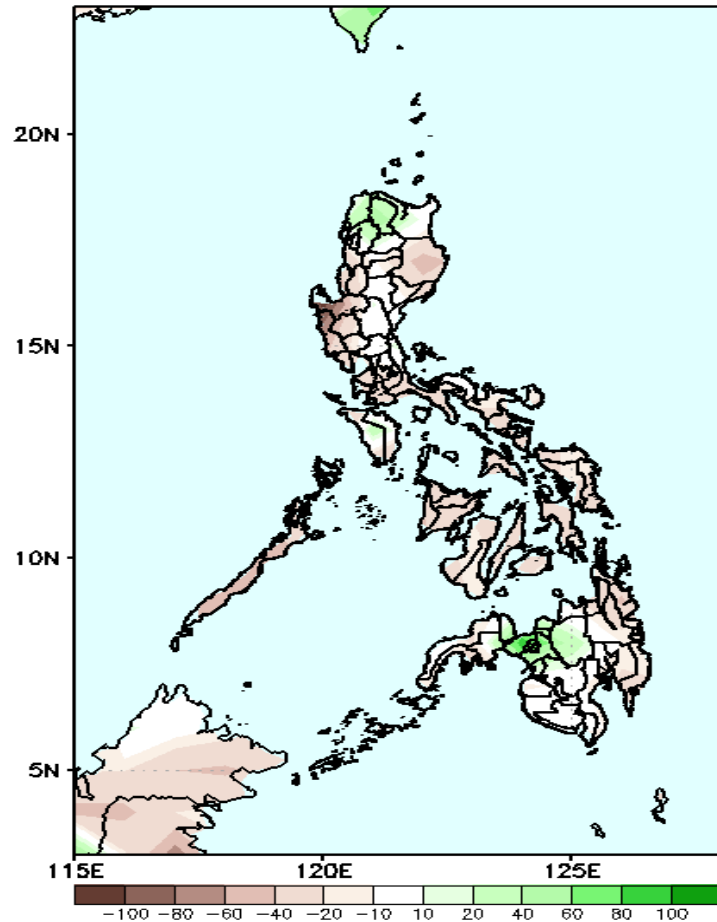
Upper level (200 hPa) Divergence suggest likelihood of precipitation in southern Luzon and most parts of Visayas and Mindanao. Easterlies affecting most parts of the country during the forecast period.



Precipitation Anomaly and Exceedance Probability > 25/50 mm

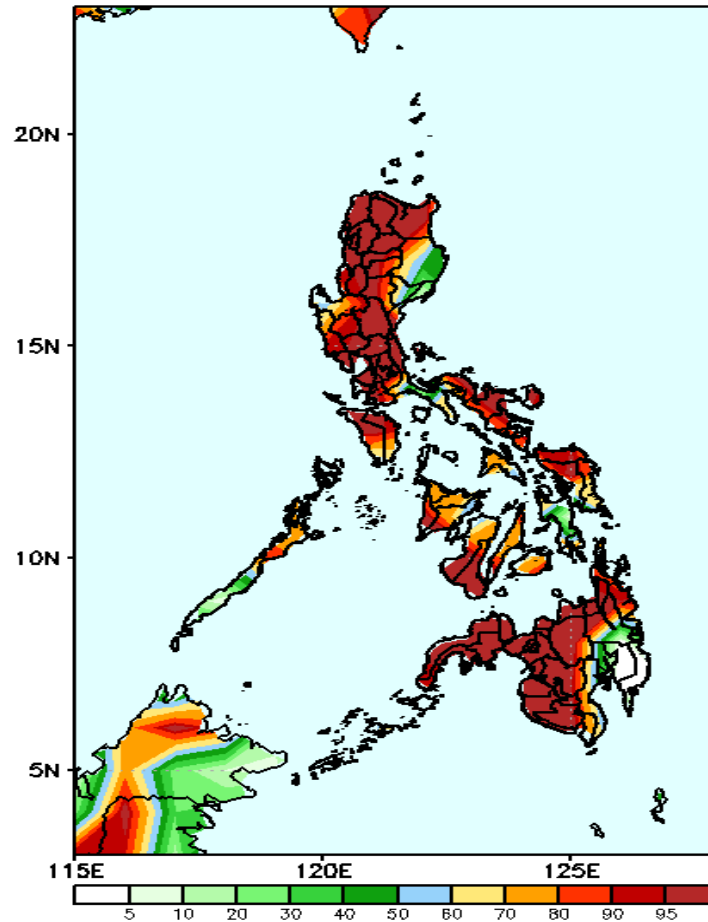
Week 1: June 29-Jul 05, 2020

GEFS Week-1 Precip Anomaly
Valid: 20200629 - 20200705



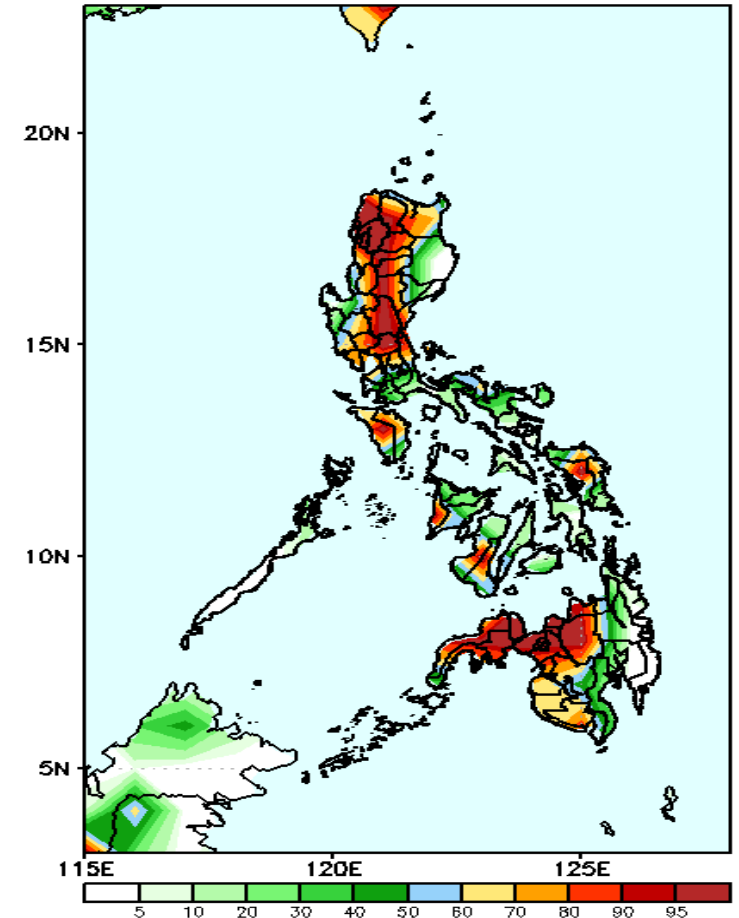
Increase of rainfall of 10-50 mm in northern Luzon and in northern Mindanao is expected while rainfall deficit of 10-80mm for the rest of the country during the forecast period.

GEFS Week-1 Exceedance Prob. > 25mm
Valid: 20200629 - 20200705



High probability of rainfall to exceed 25mm in most parts of the country except in eastern parts of Isabela and Davao Region during the forecast period.

GEFS Week-1 Exceedance Prob. > 50mm
Valid: 20200629 - 20200705

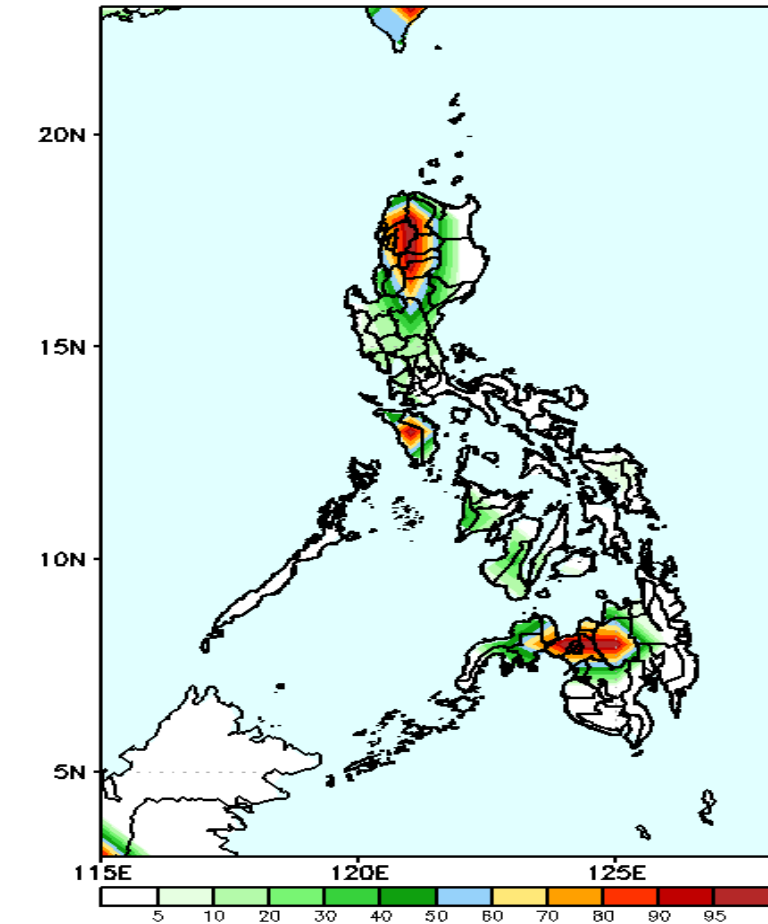


High probability of rainfall to exceed 50mm in most parts of Luzon (except Isabela, Pangasinan and Zambales), Samar provinces, western parts of Visayas and Mindanao while less likely for the rest of the country during the forecast period.

Exceedance Probability > 100/150/200 mm

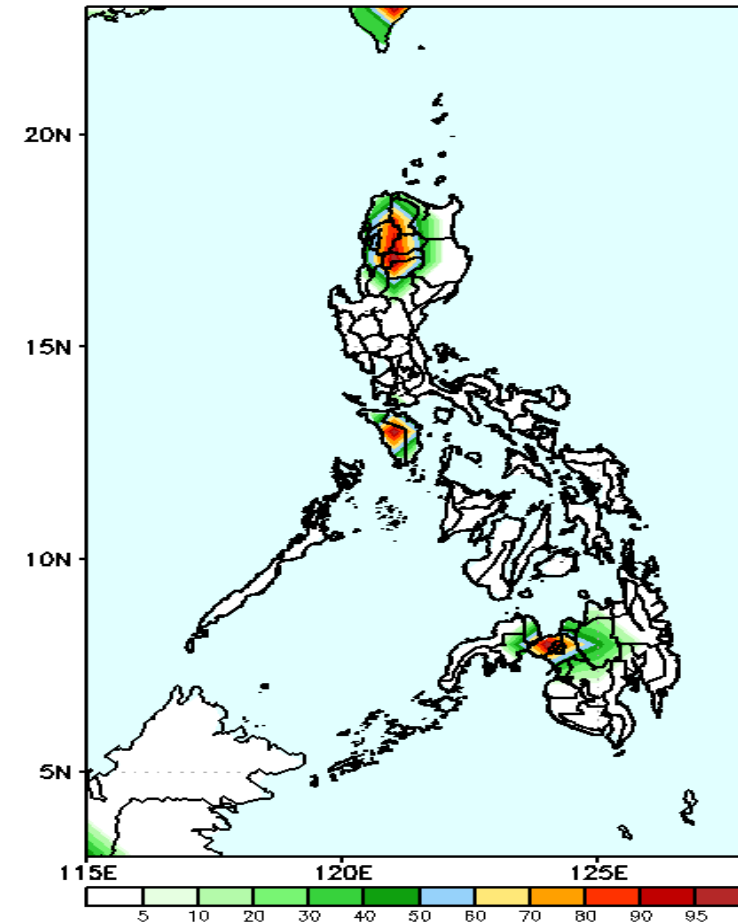
Week 1: June 29-Jul 05, 2020

GEFS Week-1 Exceedance Prob. > 100mm Valid: 20200629 - 20200705



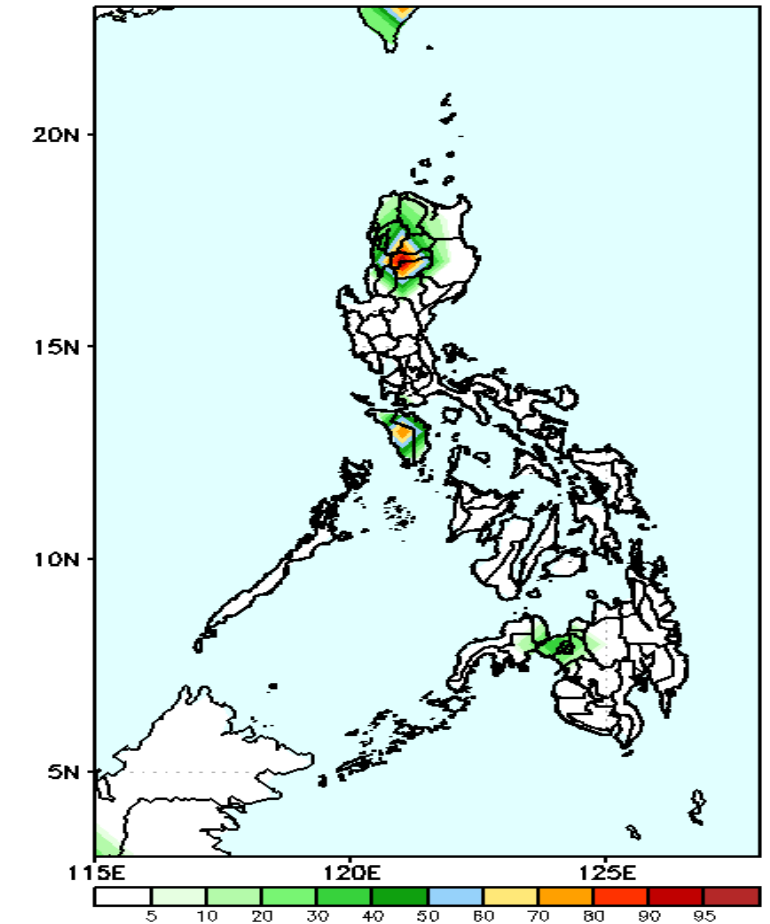
High probability of rainfall to exceed 100mm in Cordillera Region, Ilocos Norte, Mindoro and in northern Mindanao while less likely for the rest of the country during the forecast period.

GEFS Week-1 Exceedance Prob. > 150mm Valid: 20200629 - 20200705



High probability of rainfall to exceed 100mm in Cordillera Region, Mindoro and in northern Mindanao while less likely for the rest of the country during the forecast period.

GEFS Week-1 Exceedance Prob. > 200mm Valid: 20200629 - 20200705

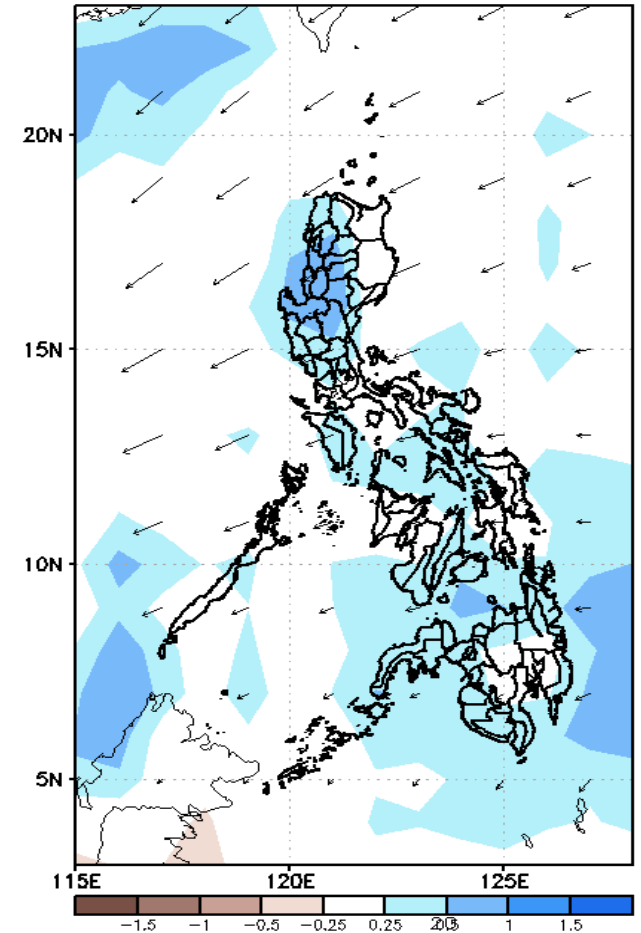
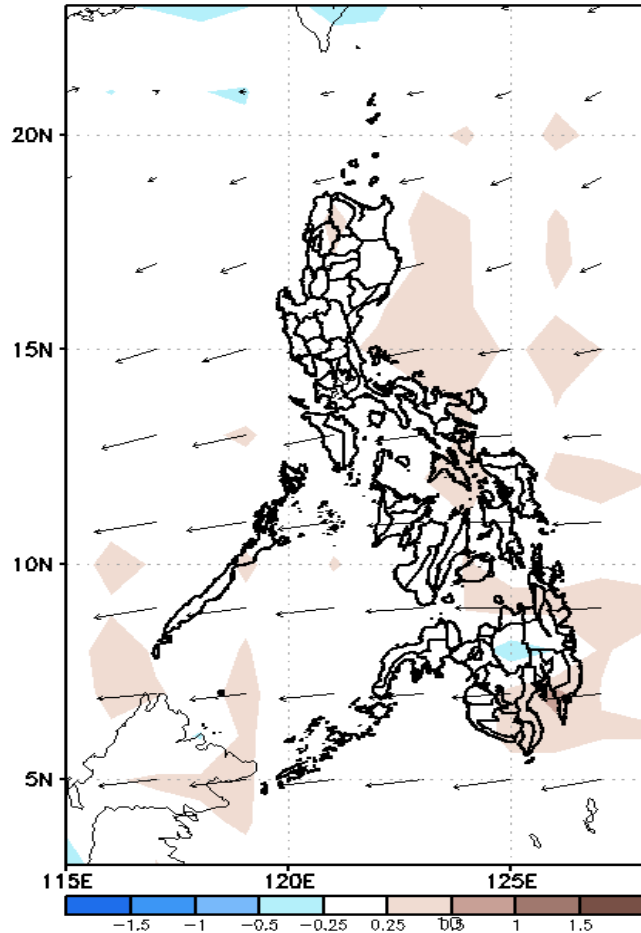
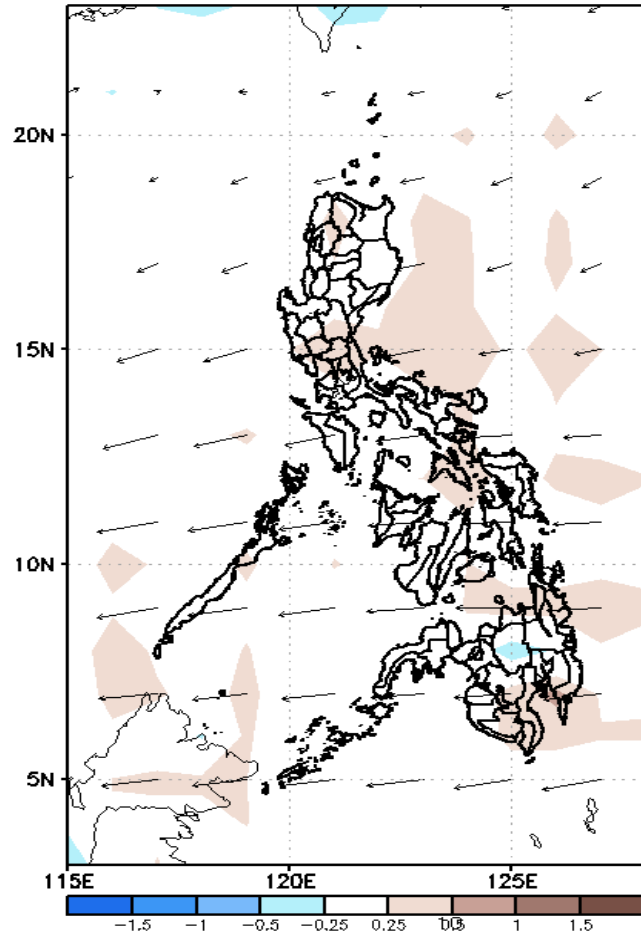


30-85% probability of rainfall to exceed 200mm in Cordillera Region and Mindoro while less likely for the rest of the country during the forecast period.

GEFS Week-2 Forecasts: Divergence & Wind Anomaly

Week 2: Jul 06-12, 2020

GEFS Week-2 850-hPa Divergence and Wind Anomaly
Valid: 20200706 - 20200712

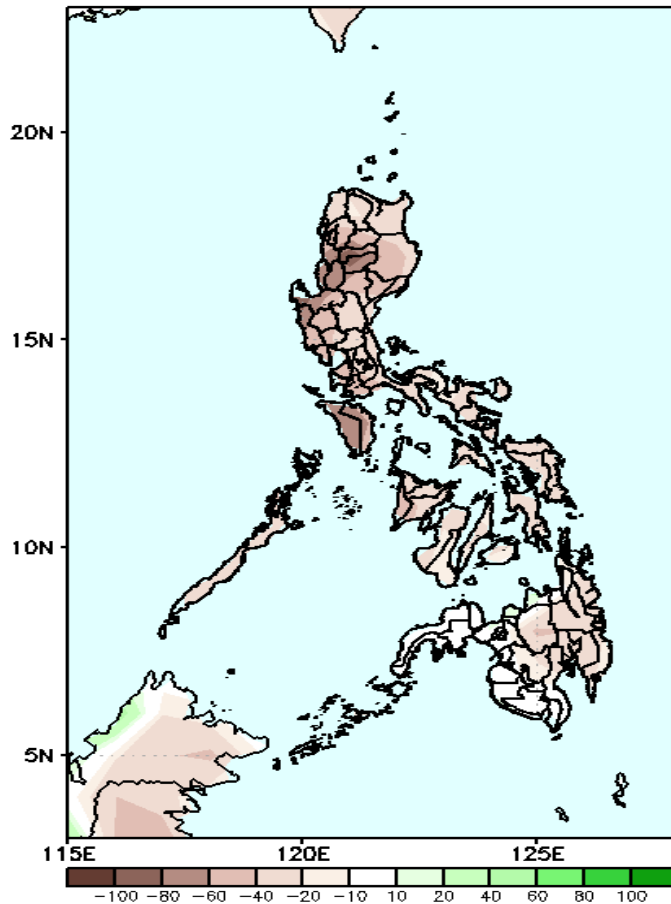


Upper level (200 hPa) Divergence suggest likelihood of precipitation in most parts of Luzon, central Visayas and most parts of Mindanao. Easterlies affecting most parts of the country during the forecast period.

Precipitation Anomaly and Exceedance Probability > 25/50 mm

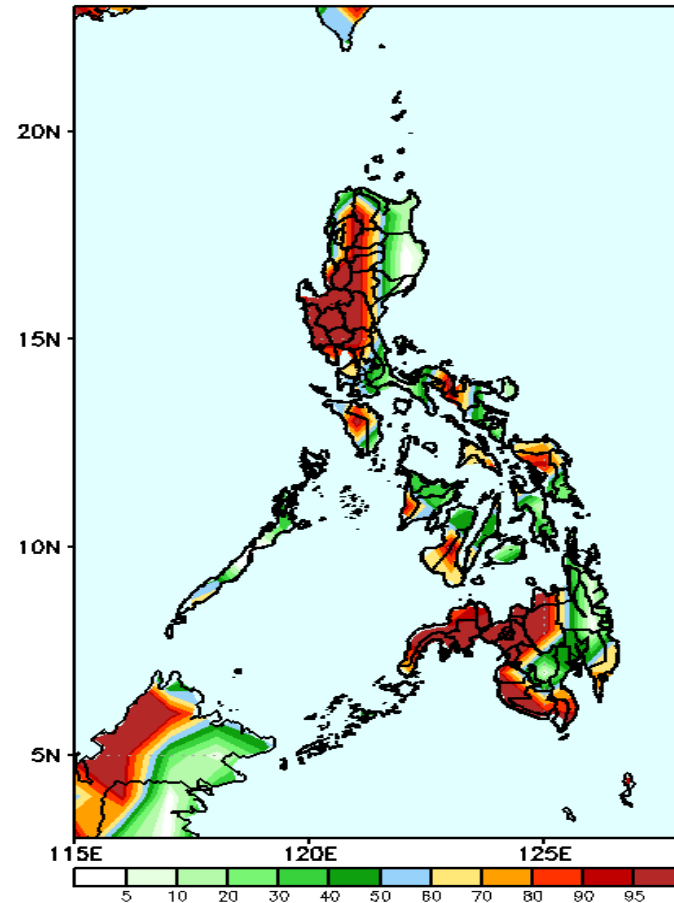
Week 2: Jul 06-12, 2020

GEFS Week-2 Precip Anomaly
Valid: 20200706 – 20200712



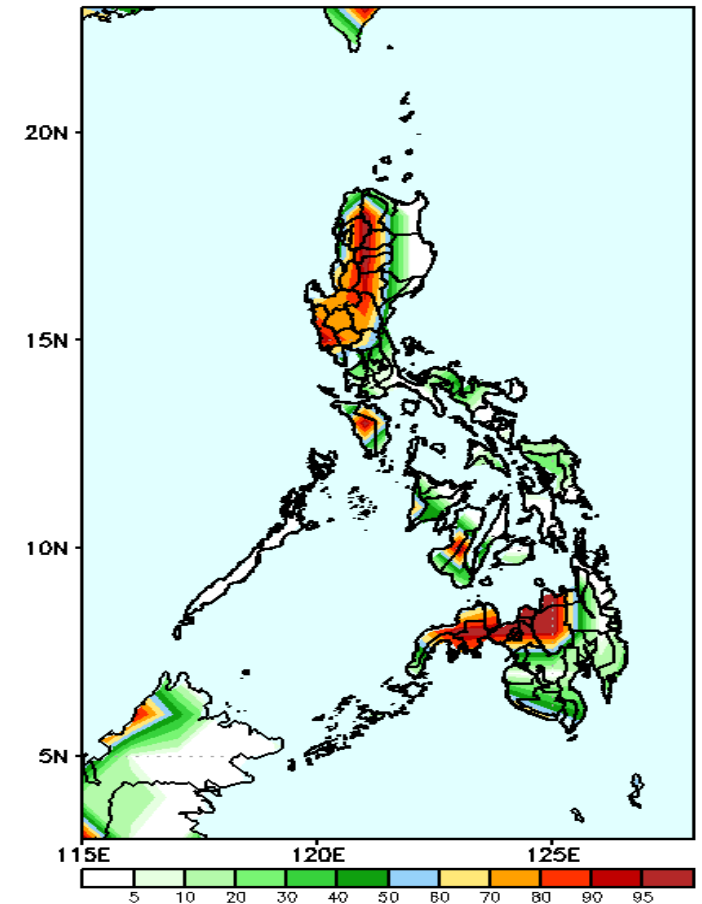
Rainfall deficit of 30-100mm is expected in most parts of the country during the forecast period.

GEFS Week-2 Exceedance Prob. > 25mm
Valid: 20200706 – 20200712



High probability of rainfall to exceed 25mm in most parts of the country is expected except in eastern parts of Luzon, central parts of Visayas and eastern parts of Mindanao and North Coatabato during the forecast period.

GEFS Week-2 Exceedance Prob. > 50mm
Valid: 20200706 – 20200712

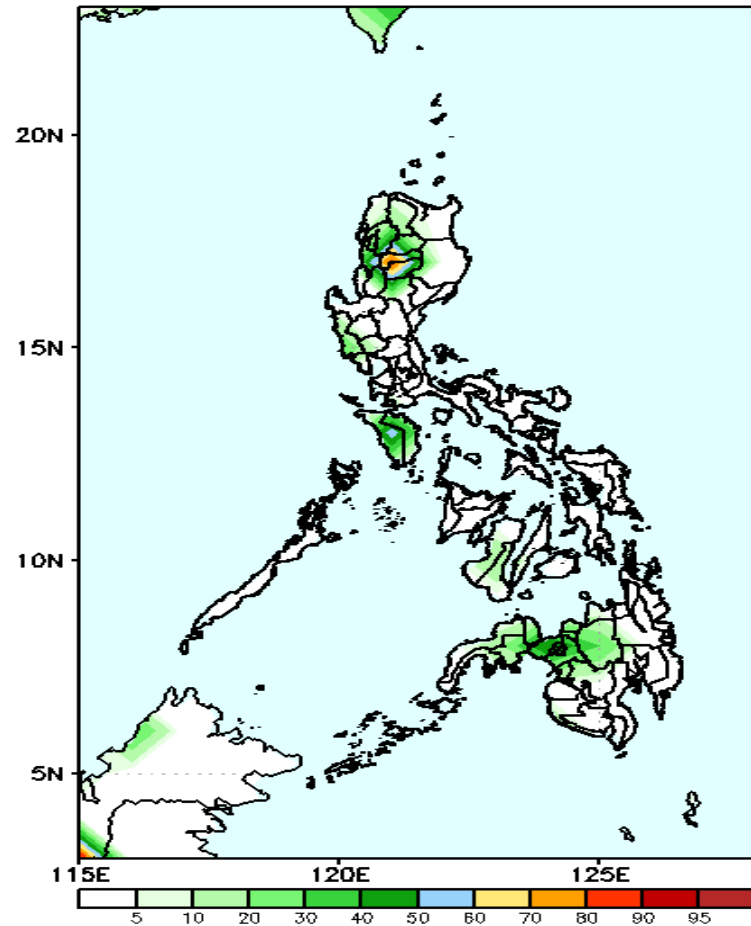


High probability of rainfall to exceed 50mm in most parts of western Luzon, Mindoro and in northern Mindanao and Zamboanga Peninsula while less likely for the rest of the country during the forecast period.

Exceedance Probability > 100/150/200 mm

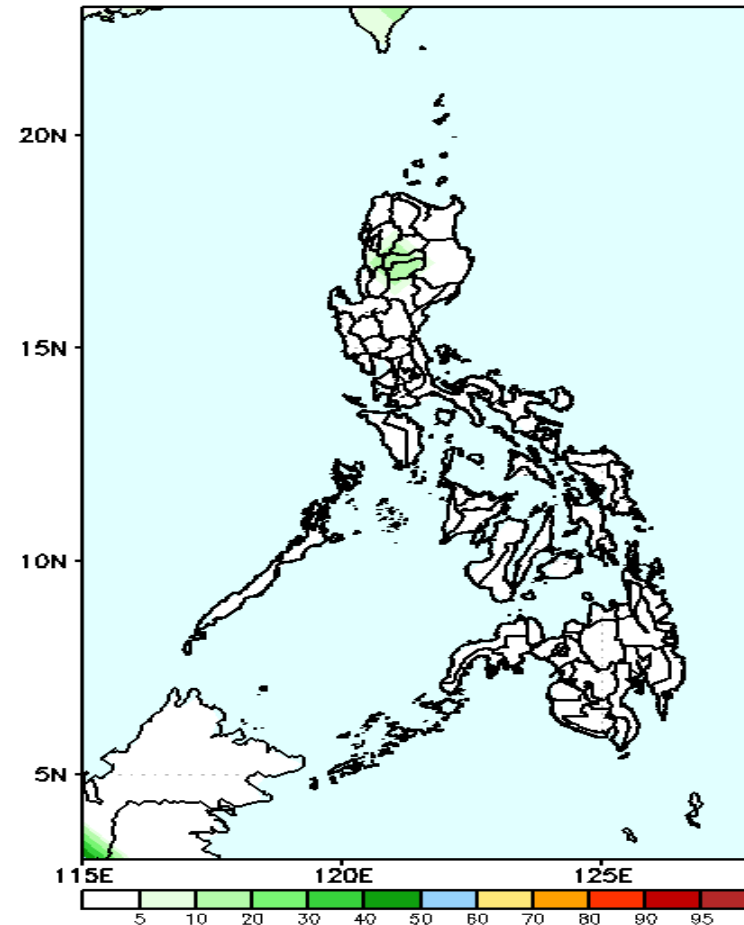
Week 2: Jul 06-12, 2020

GEFS Week-2 Exceedance Prob. > 100mm
Valid: 20200706 - 20200712



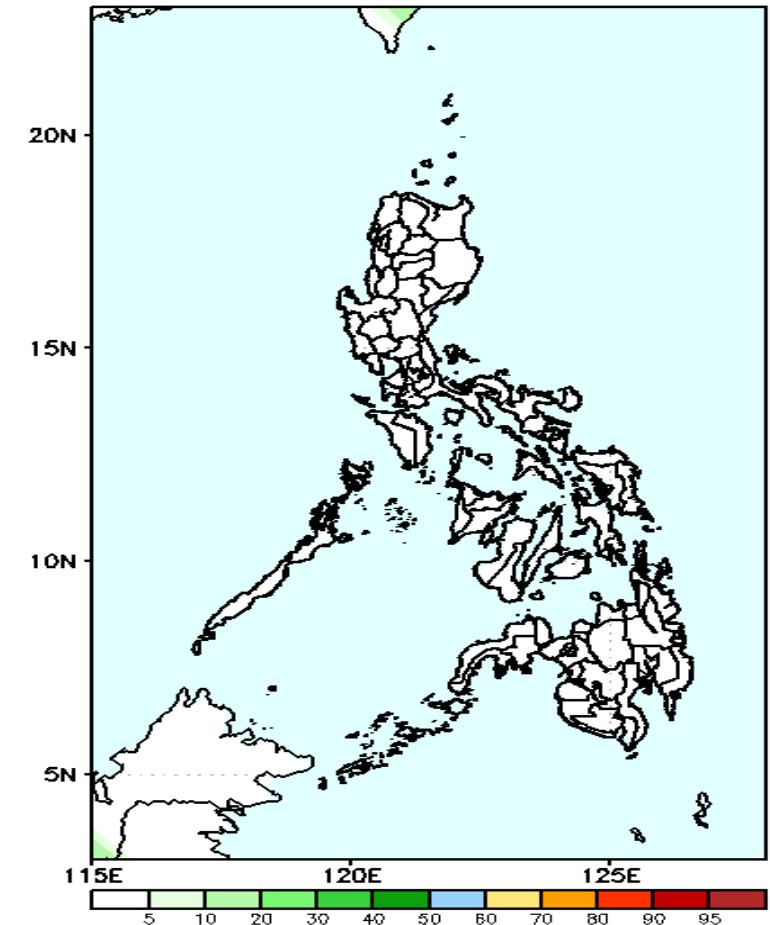
30-75% probability of rainfall to exceed 100mm in Cordillera Region, Mindoro and in northern Mindanao while less likely for the rest of the country during the forecast period.

GEFS Week-2 Exceedance Prob. > 150mm Valid: 20200706 - 20200712



Less probability of rainfall to exceed 150mm in most parts of the country during the forecast period.

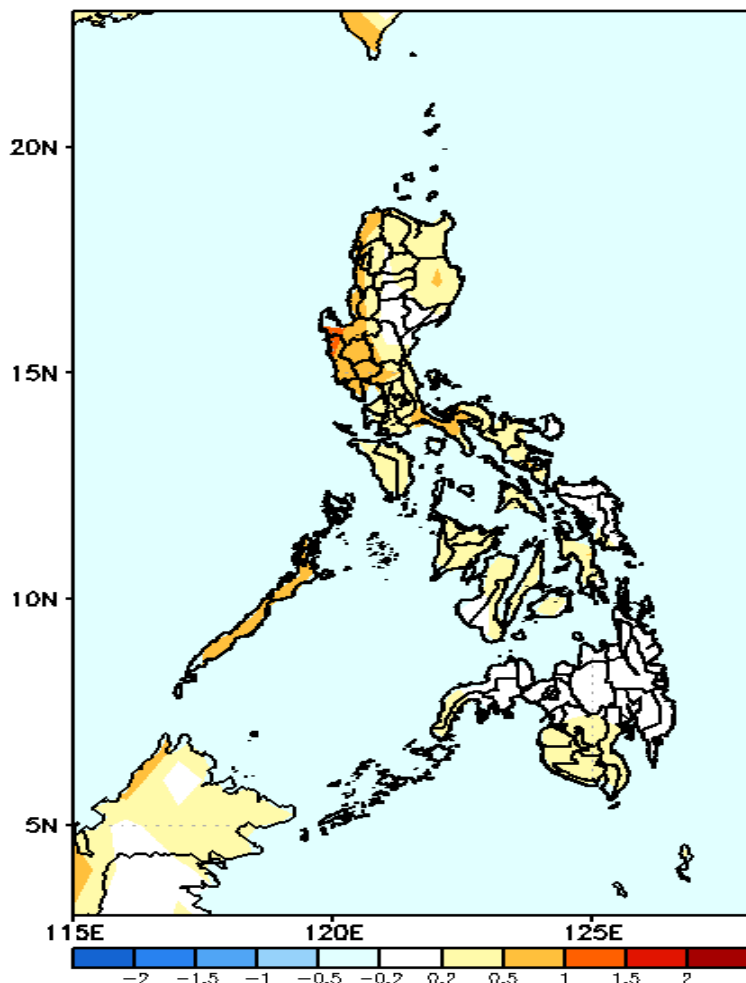
GEFS Week-2 Exceedance Prob. > 200mm Valid: 20200706 - 20200712



Less probability of rainfall to exceed 200mm in most parts of the country during the forecast period.

GEFS Week-1 & 2 Forecasts: T2m Anomaly

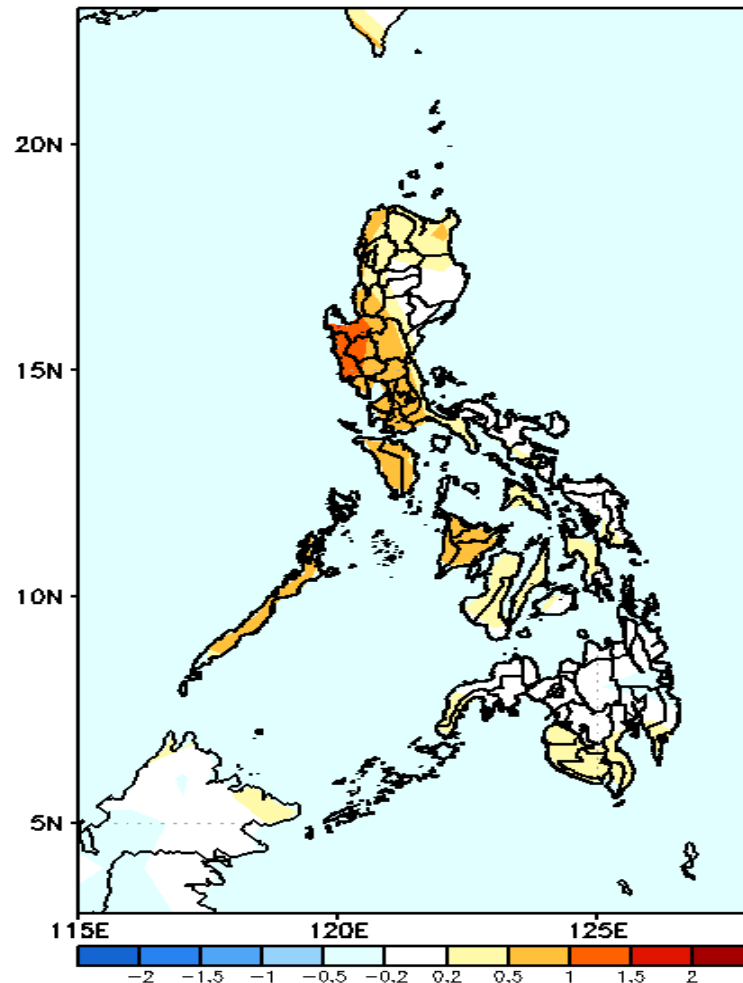
GEFS Week-1 T2m Anomaly
Valid: 20200629 - 20200705



2m Temperature Week 1: June 29-Jul 05, 2020

Average to slightly warmer than average surface air temperature will likely experience in most parts of the country during the forecast period.

GEFS Week-2 T2m Anomaly
Valid: 20200706 - 20200712



2m Temperature Week 2: Jul 06-12, 2020

Slightly warmer to warmer than average surface air temperature will likely experience in western parts of Luzon and Visayas while average to slightly warmer for the rest of the country during the forecast period.