



USAID
FROM THE AMERICAN PEOPLE



**Turkish State
Meteorological Service**

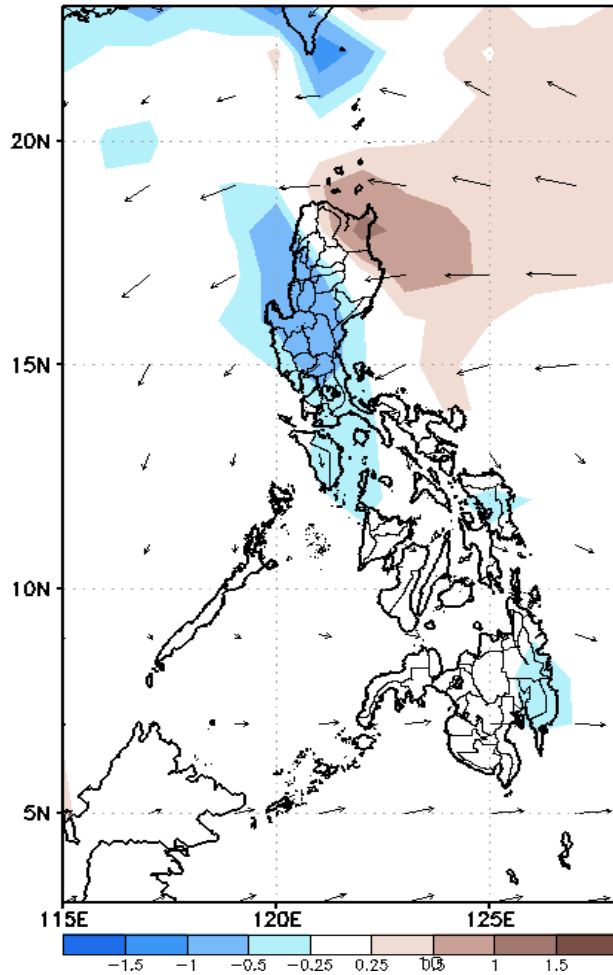
Week 1 & Week 2 Forecast for the Philippines using GEFS Model



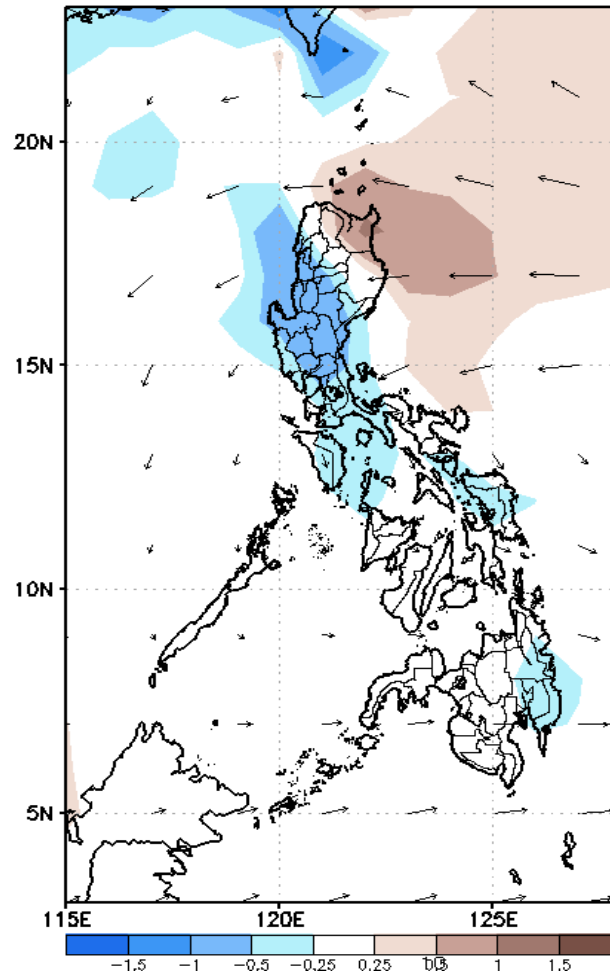
GEFS Week-1 Forecasts: Divergence & Wind

Week 1: Nov 29-Dec 05, 2019

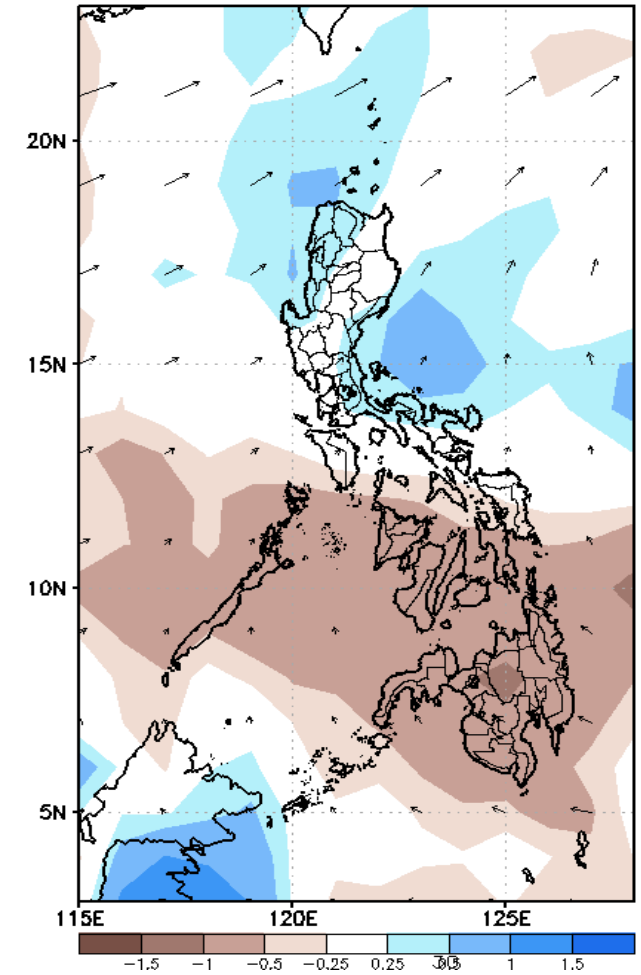
GEFS Week-1 850-hPa Divergence and Wind
Valid: 20191129 - 20191205



GEFS Week-1 700-hPa Divergence and Wind
Valid: 20191129 - 20191205



GEFS Week-1 200-hPa Divergence and Wind
Valid: 20191129 - 20191205

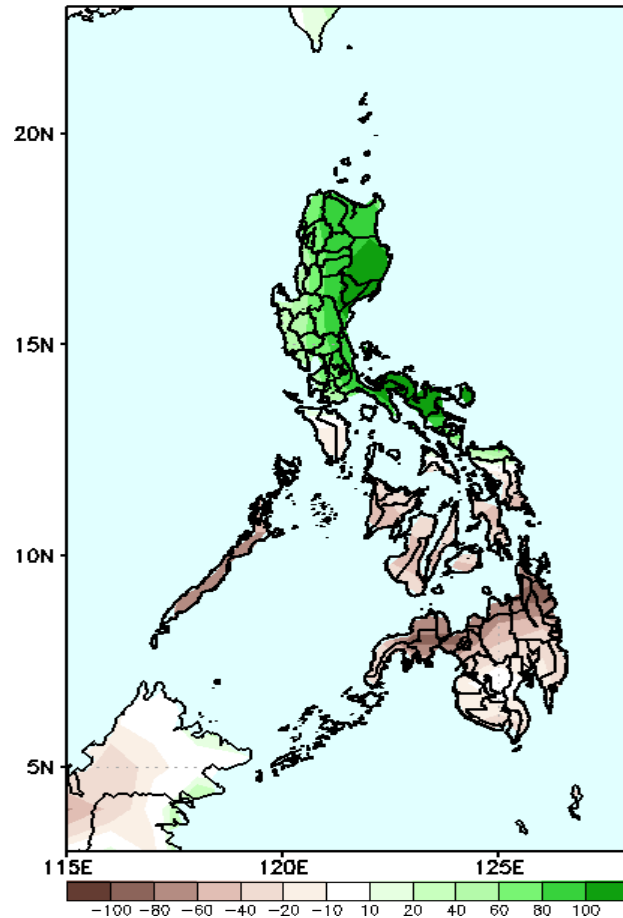


Low level (850 hPa) Divergence (Brown shaded color) suggest likelihood of heavy precipitation in most parts of Luzon during the forecast period. Moreover a cyclonic wind pattern is affecting most parts Luzon and Visayas during the forecast period.

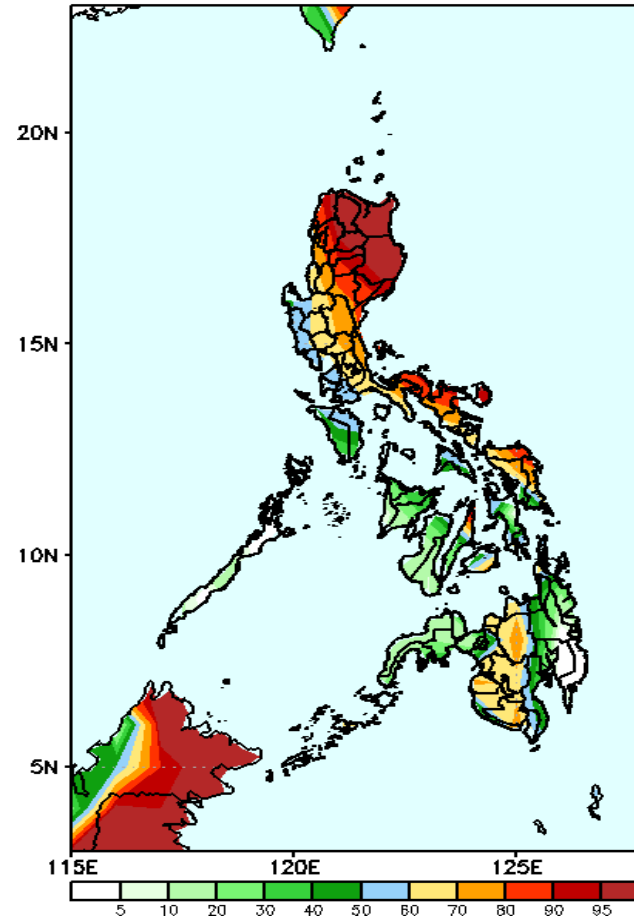
Precipitation Anomaly and Exceedance Probability > 25/50 mm

Week 1: Nov 29-Dec 05, 2019

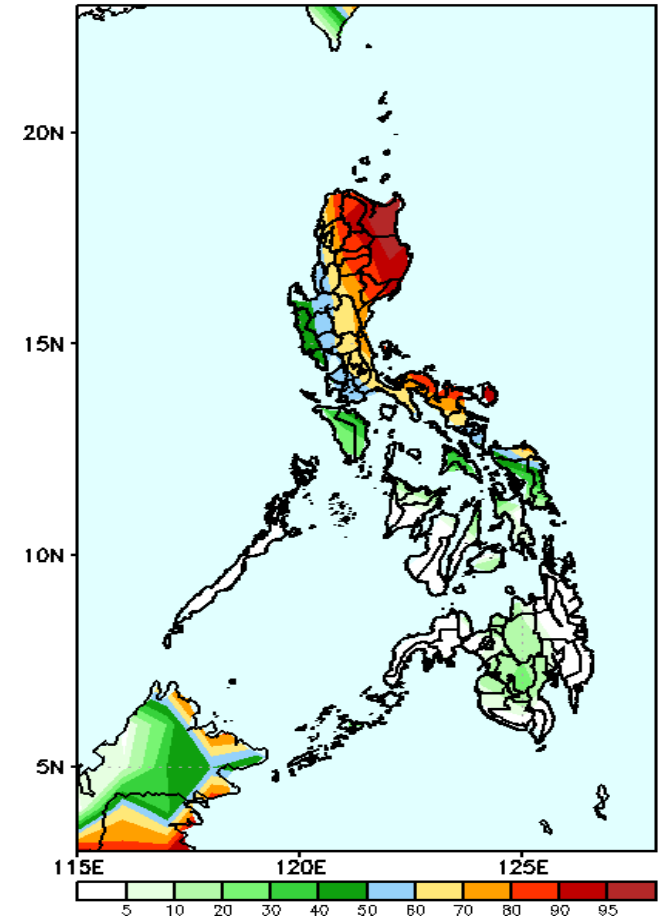
GEFS Week-1 Precip Anomaly
Valid: 20191129 - 20191205



GEFS Week-1 Exceedance Prob. > 25mm
Valid: 20191129 - 20191205



GEFS Week-1 Exceedance Prob. > 50mm
Valid: 20191129 - 20191205



Increase of rainfall up to 100 mm in most parts of Luzon and eastern Visayas is expected while the rest of the country will likely to have a rainfall deficit of up to 100 mm.

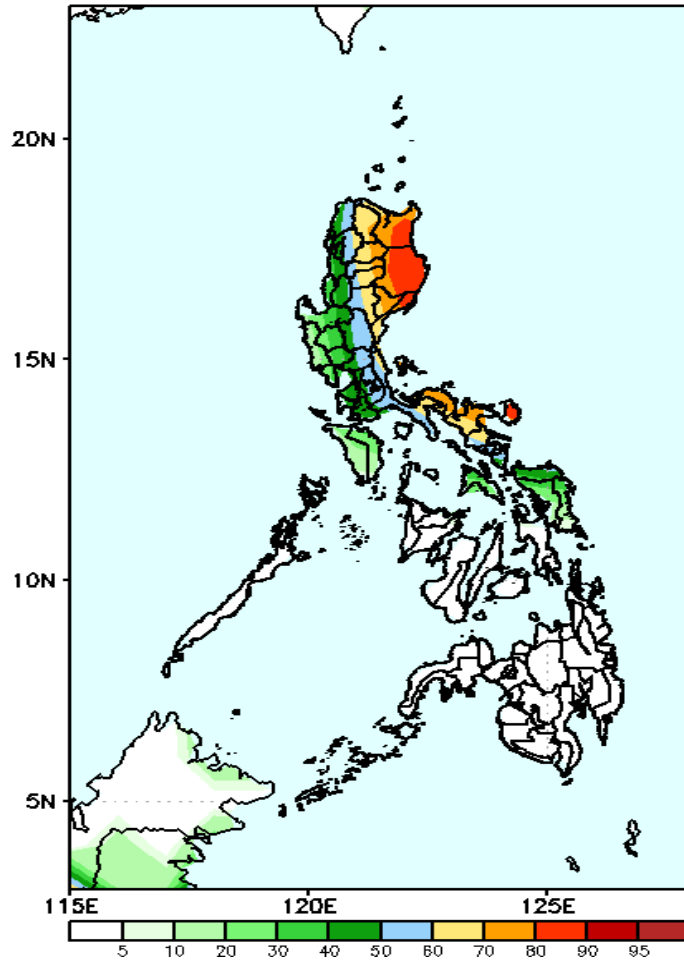
High probabilities for rainfall exceeding 25mm in most parts of Luzon and eastern Visayas while less likely for the rest of the country.

High probabilities for rainfall exceeding 50mm in most parts while less likely for the rest of the country.

Exceedance Probability > 100/150/200 mm

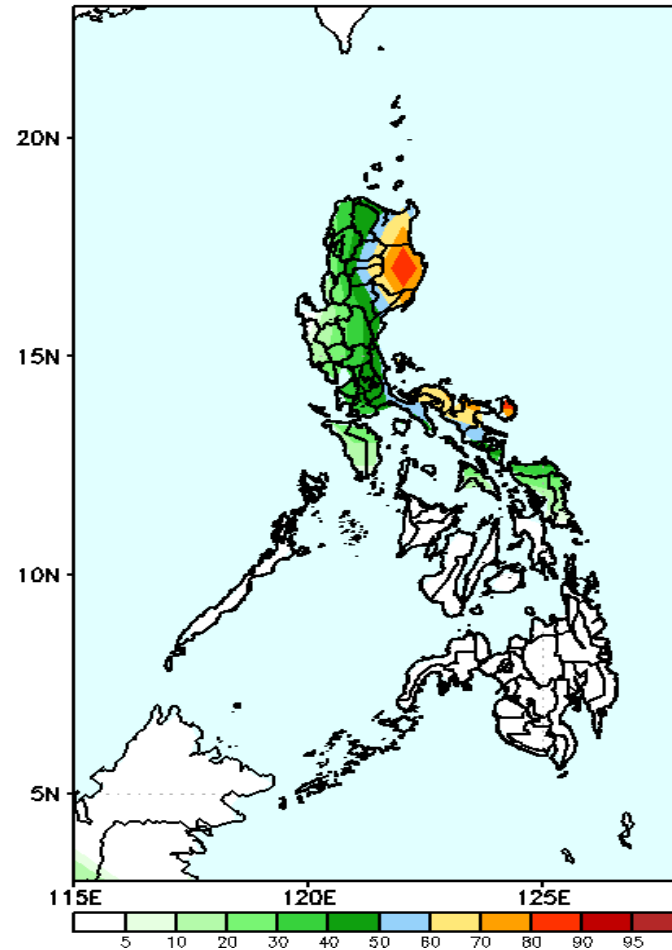
Week 1: Nov 29- Dec 05, 2019

GEFS Week-1 Exceedance Prob. > 100mm
Valid: 20191129 - 20191205



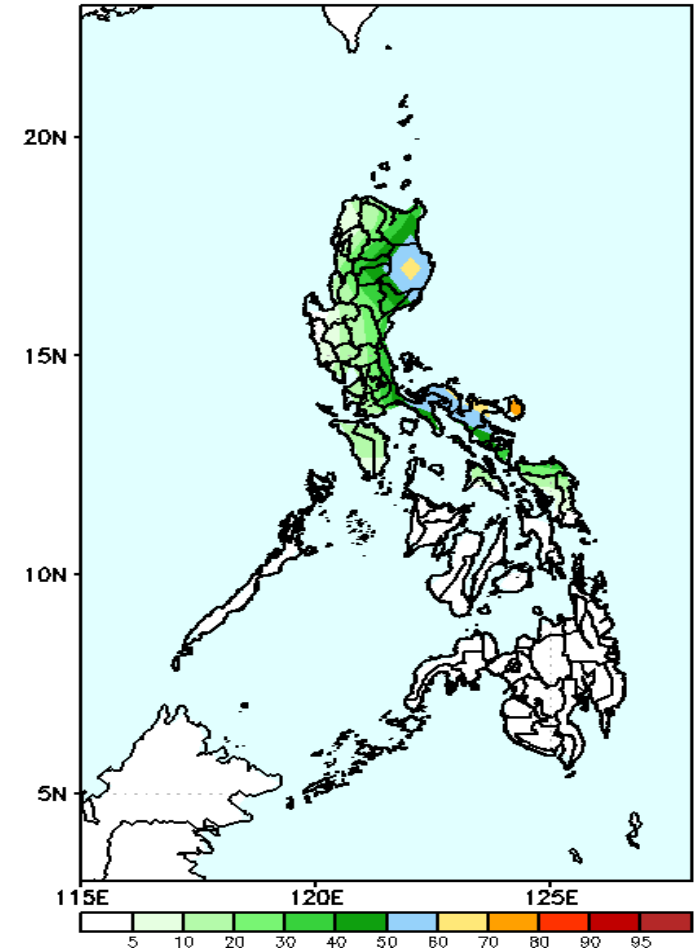
High probabilities for rainfall exceeding 100mm in eastern Luzon and northeastern Visayas while less likely for the rest of the country.

GEFS Week-1 Exceedance Prob. > 150mm
Valid: 20191129 - 20191205



50-90% probabilities for rainfall exceeding 150mm in eastern Luzon and Bicol region while less likely for the rest of the country.

GEFS Week-1 Exceedance Prob. > 200mm
Valid: 20191129 - 20191205

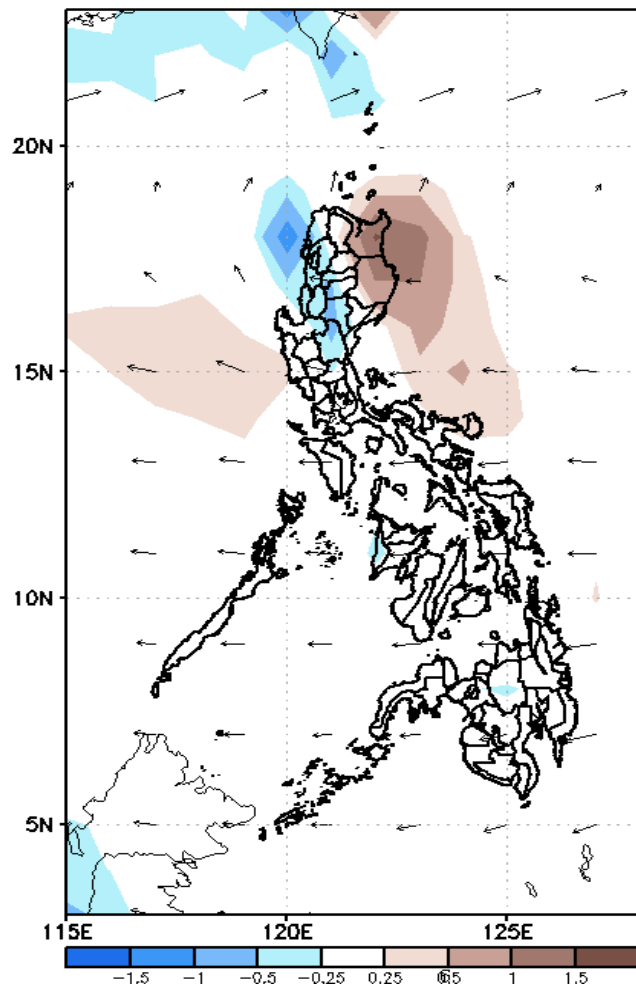


Less probability of rainfall to exceed 200 mm in most parts of the country except in Isabela and Bicol Region where 50-75% is expected.

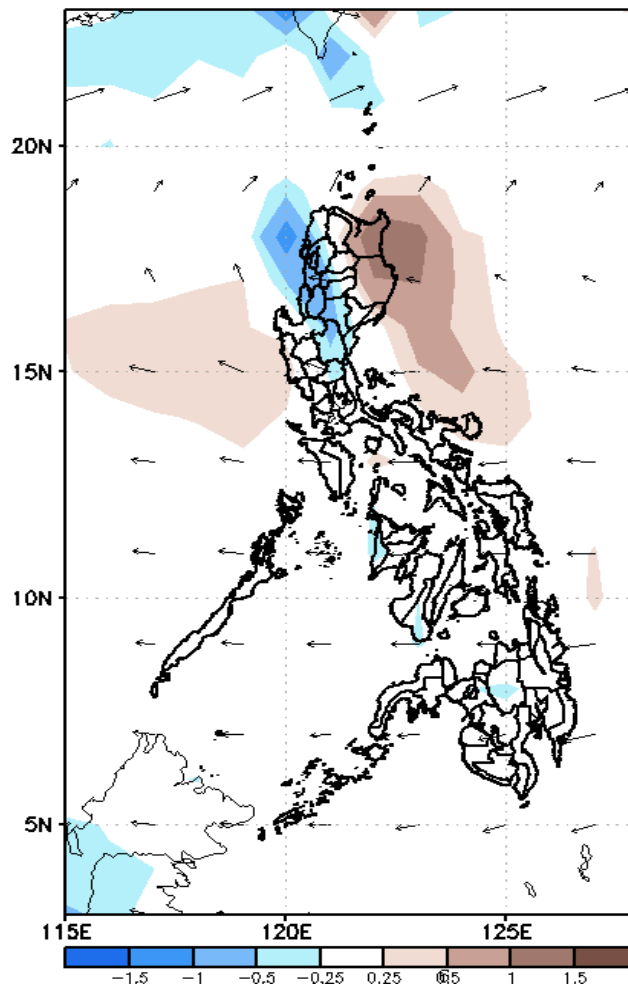
GEFS Week-2 Forecasts: Divergence & Wind

Week 2: Dec 06-Dec 12, 2019

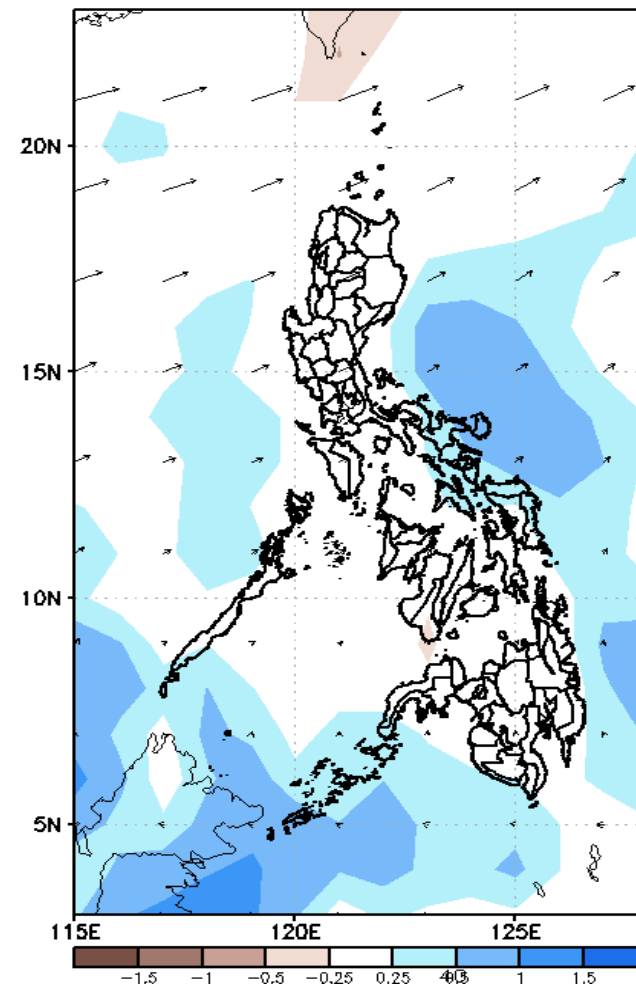
GEFS Week-2 850-hPa Divergence and Wind
Valid: 20191206 - 20191212



GEFS Week-2 700-hPa Divergence and Wind
Valid: 20191206 - 20191212



GEFS week-2 200-hPa Divergence and Wind
Valid: 20191206 - 20191212

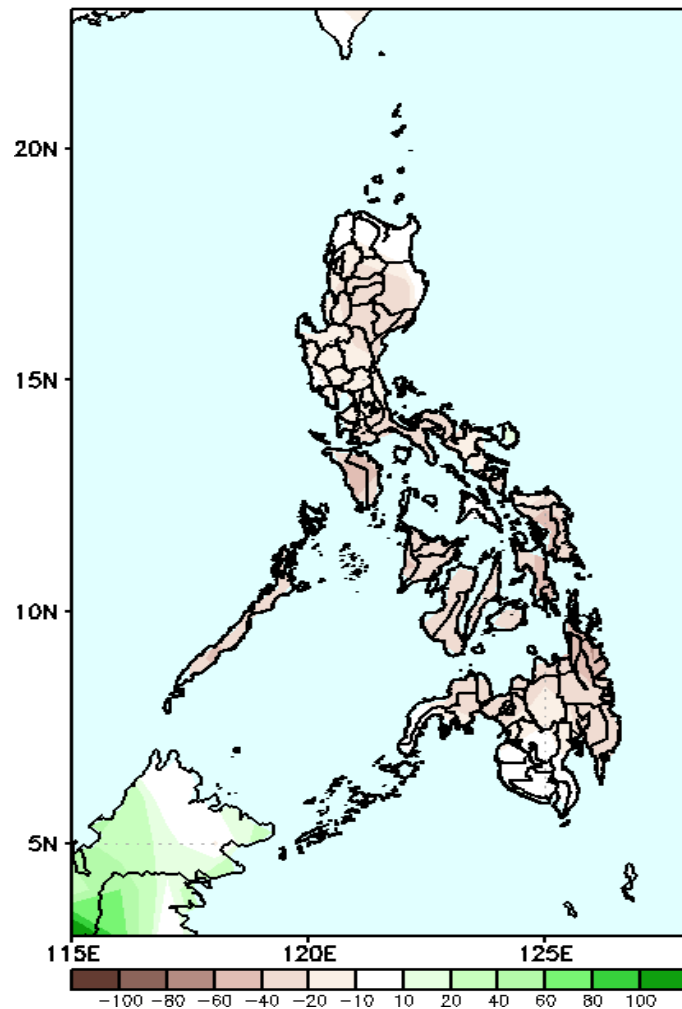


Low level (850 hPa) Divergence (Brown shaded color) suggest likelihood of heavy precipitation in northwestern Luzon. Moreover a cyclonic wind pattern is affecting most parts Luzon during the forecast period.

Precipitation Anomaly and Exceedance Probability > 25/50 mm

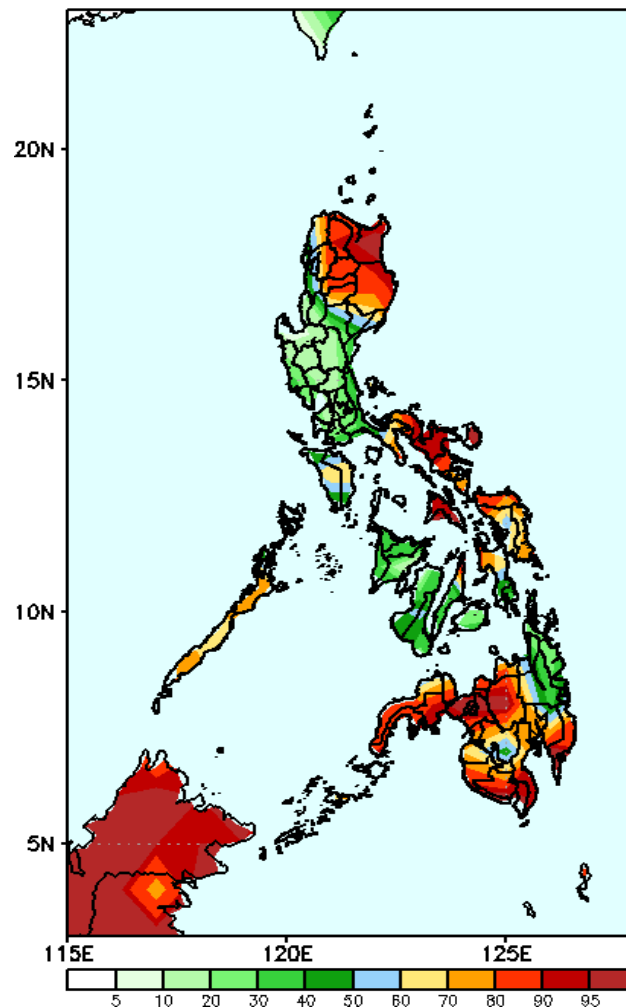
Week 2: Dec 06-Dec 12, 2019

GEFS Week-2 Precip Anomaly
Valid: 20191206 – 20191212



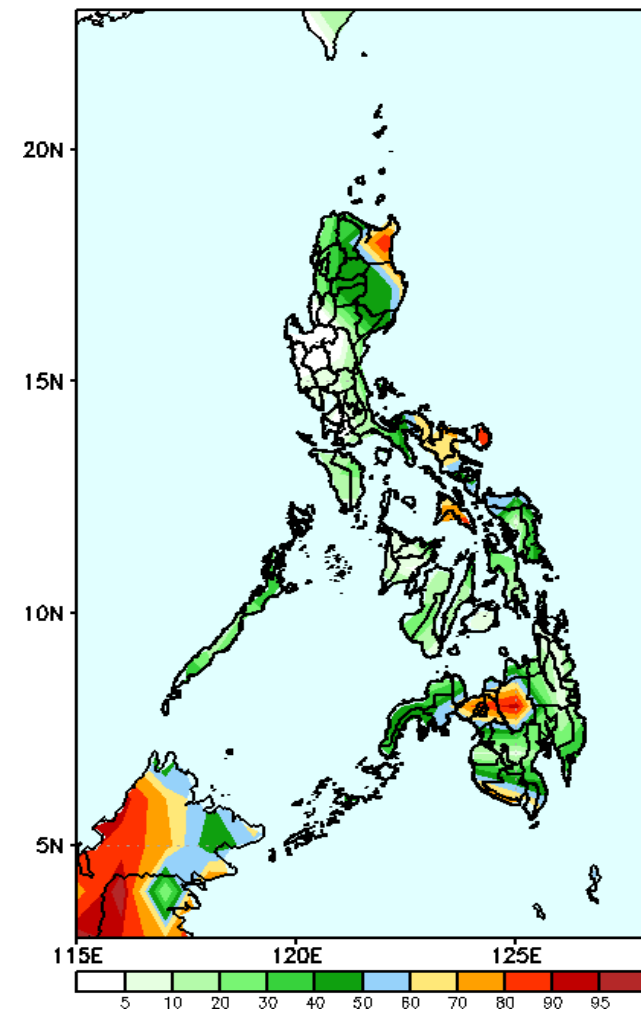
Most parts of the country will likely to have rainfall deficit of up to 60 mm.

GEFS Week-2 Exceedance Prob. > 25mm
Valid: 20191206 – 20191212



High probabilities for rainfall exceeding 25mm in northern Luzon, Palawan, eastern Visayas and most parts of Mindanao.

GEFS Week-2 Exceedance Prob. > 50mm
Valid: 20191206 – 20191212

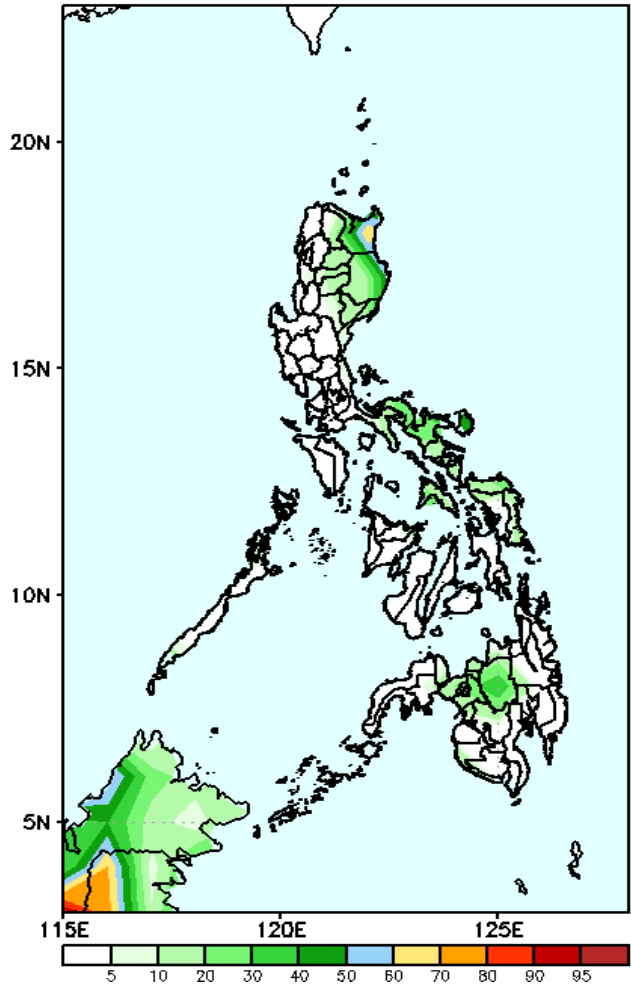


Less probability of rainfall to exceed 50 mm in most parts of the country except in Cagyan, Bicol Region, ARMM and region X where 60-90% chance is expected.

Exceedance Probability > 100/150/200 mm

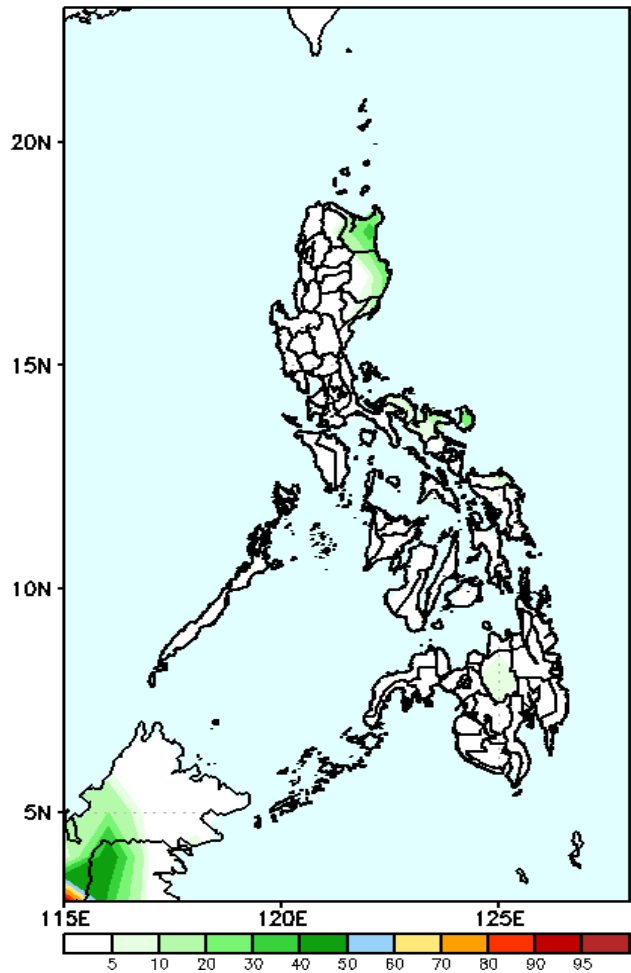
Week 2: Dec 06-Dec 12, 2019

GEFS Week-2 Exceedance Prob. > 100mm
Valid: 20191206 – 20191212



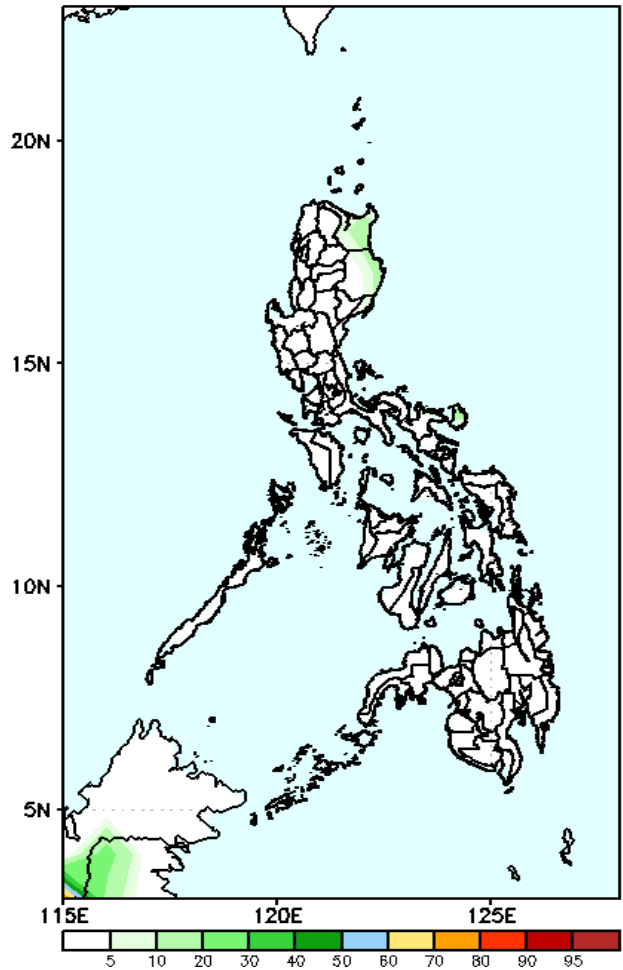
Less probability of rainfall to exceed 100 mm in most parts of the country during the forecast period.

GEFS Week-2 Exceedance Prob. > 150mm
Valid: 20191206 – 20191212



Less probability of rainfall to exceed 150 mm in most parts of the country during the forecast period.

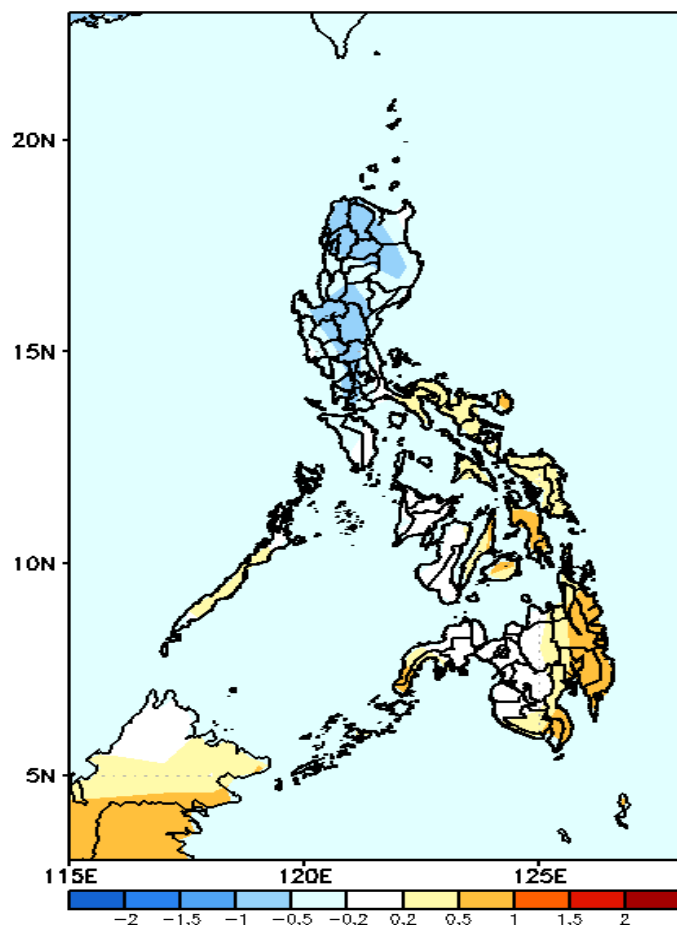
GEFS Week-2 Exceedance Prob. > 200mm
Valid: 20191206 – 20191212



Less probability of rainfall to exceed 200 mm in most parts of the country during the forecast period.

GEFS Week-1 & 2 Forecasts: T2m Anomaly

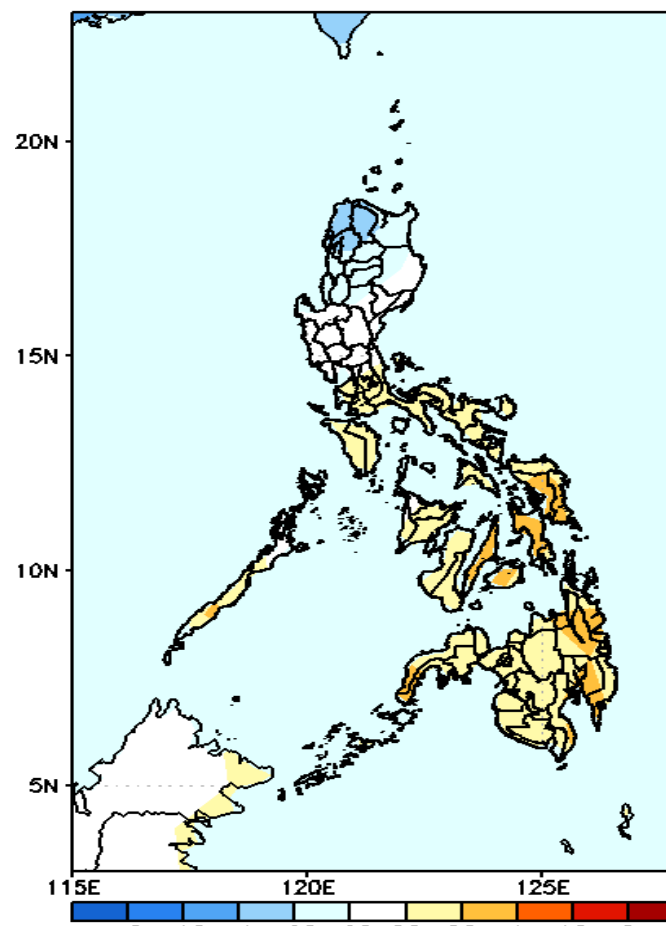
GEFS Week-1 T2m Anomaly
Valid: 20191129 - 20191205



2m Temperature Week1 (Nov 29-Dec 05, 2019)

Slightly cooler to cooler than average surface air temperature will likely experience in most parts of Luzon while slightly warmer to warmer than normal for the rest of the country.

GEFS Week-2 T2m Anomaly
Valid: 20191206 - 20191212



2m Temperature Week 2: Dec 06-Dec 12, 2019

Slightly cooler surface air temperature are expected in Luzon while the rest of the country will likely experience slightly warmer to warmer than average temperature.