



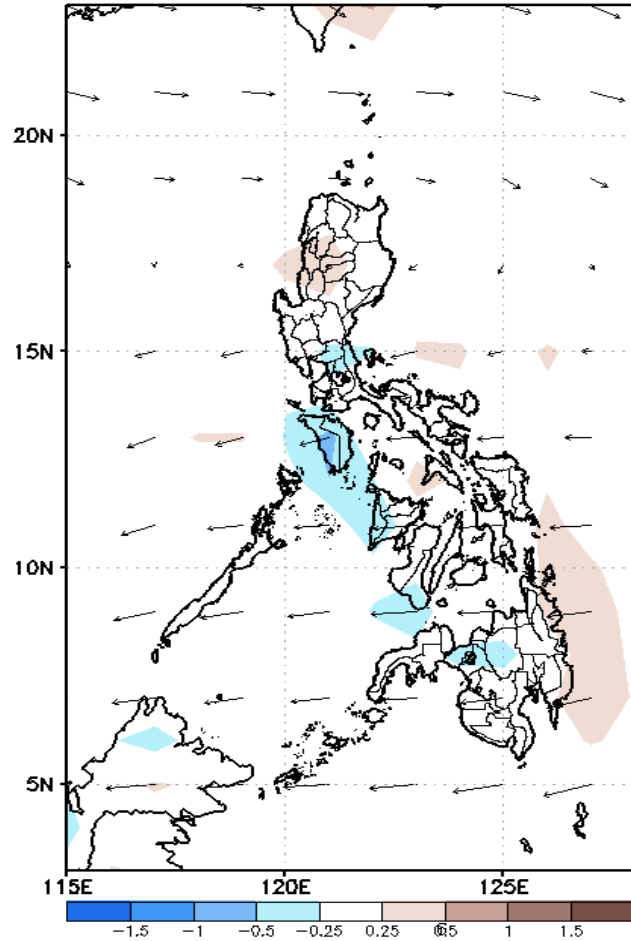
# Week 1 & Week 2 Forecast for the Philippines using GEFS Model



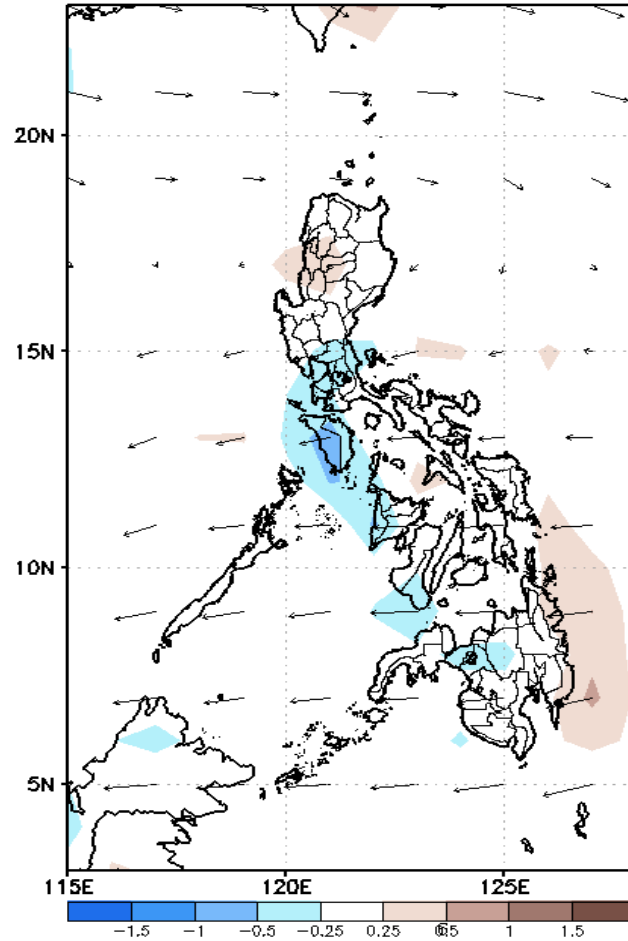
# GEFS Week-1 Forecasts: Divergence & Wind Anomaly

**Week 1: Apr 29- May 05, 2021**

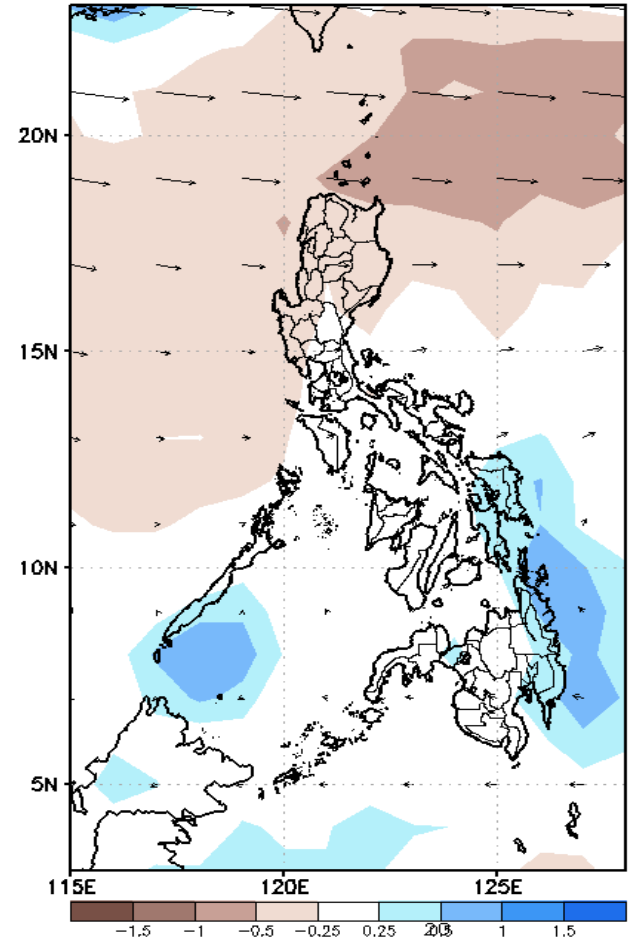
GEFS Week-1 850-hPa Divergence and Wind Anom  
Valid: 20210429 - 20210505



GEFS Week-1 700-hPa Divergence and Wind Anom  
Valid: 20210429 - 20210505



GEFS Week-1 200-hPa Divergence and Wind Anom  
Valid: 20210429 - 20210505

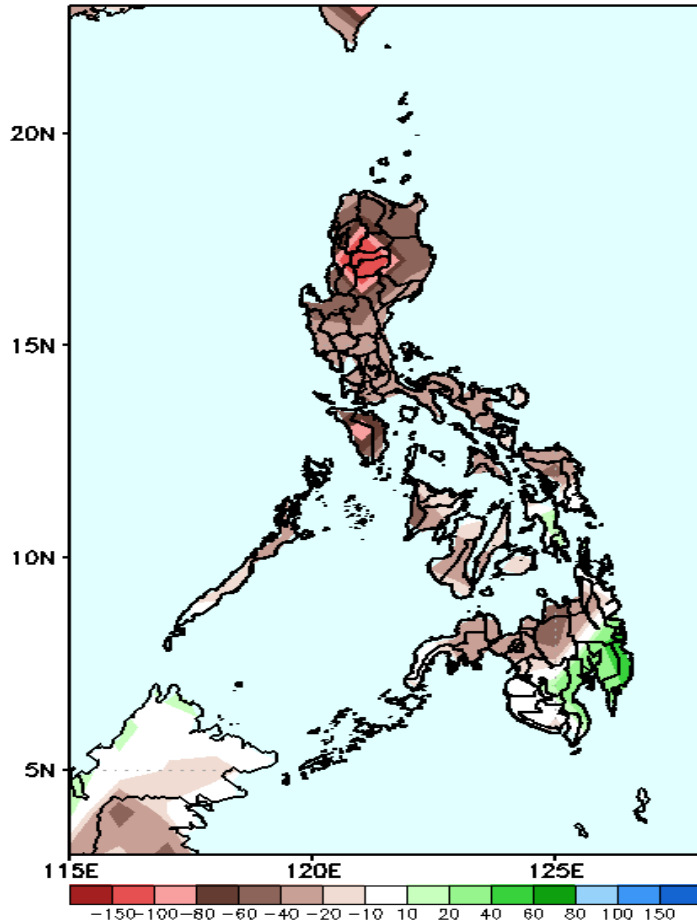


Upper and low level Divergence suggest likelihood of precipitation in the southern part of Central Luzon, Mindoro provinces and eastern parts of Visayas and Mindanao. Easterlies affecting most parts of the country attributing to warmer temperatures during the forecast period.

# Precipitation Anomaly and Exceedance Probability > 25/50 mm

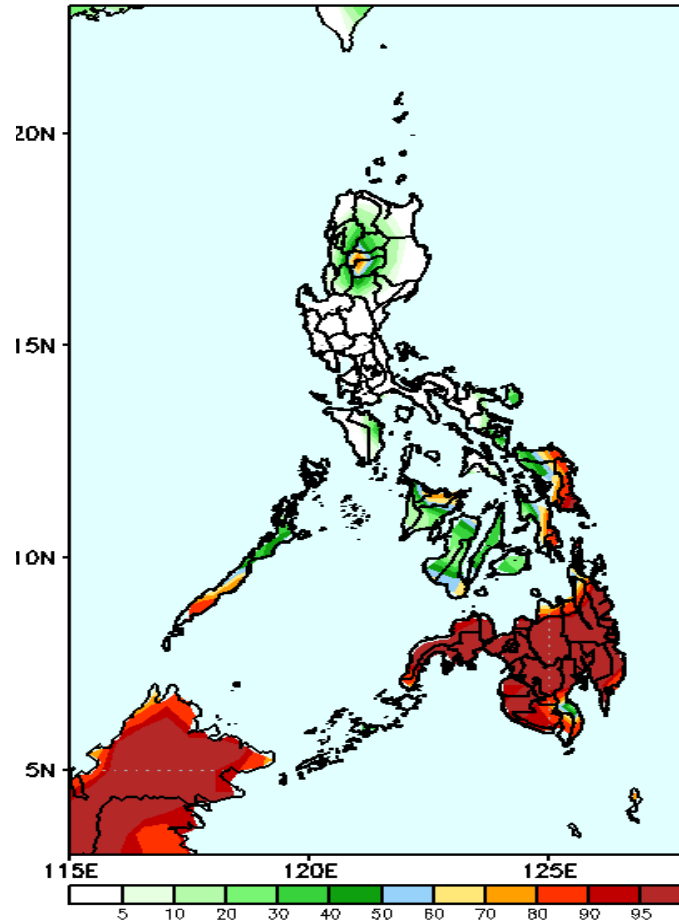
**Week 1: Apr 29- May 05, 2021**

GEFS Week-1 Precip Anomaly  
Valid: 20210429 - 20210505



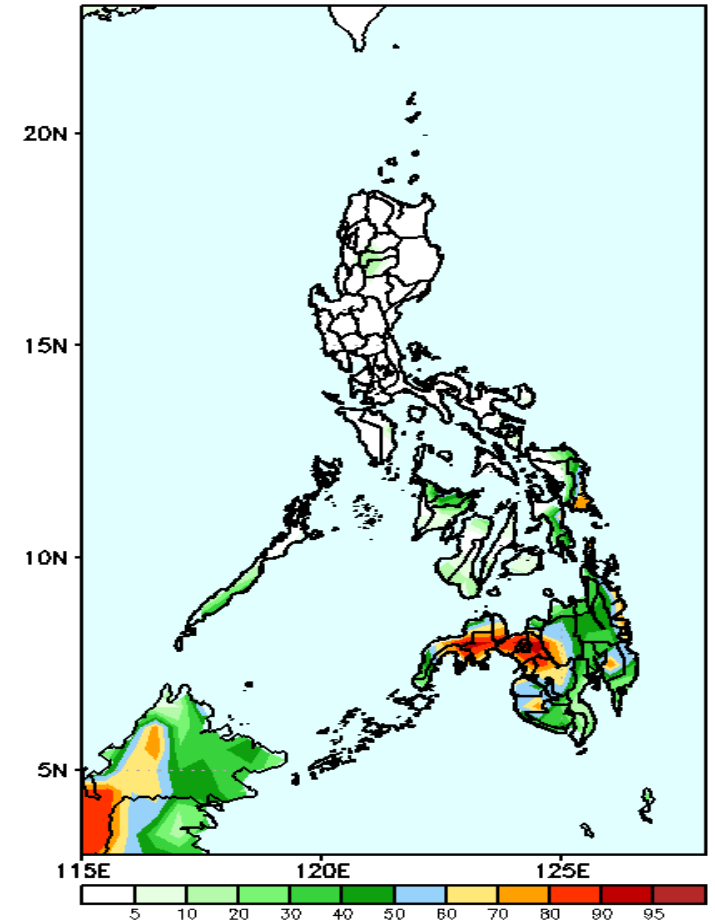
Rainfall deficit of 40-150mm is expected in most parts of the country (especially in Cordillera Region) except in southern Mindanao where above normal rainfall is more likely during the forecast period.

GEFS Week-1 Exceedance Prob. > 25mm  
Valid: 20210429 - 20210505



Rainfall deficit of 40-150mm is expected in most parts of the country (especially in Cordillera Region) except in southern Mindanao where above normal rainfall is more likely during the forecast period.

GEFS Week-1 Exceedance Prob. > 50mm  
Valid: 20210429 - 20210505

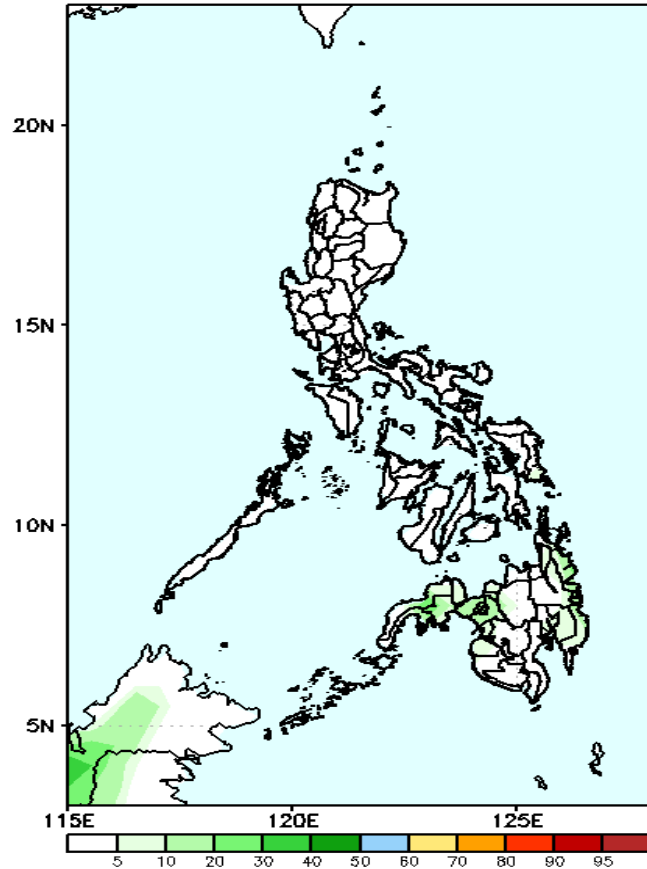


High probability of rainfall to exceed 50mm in southern parts of Samar, Misamis Occ., Lanao Provinces and most parts of Zamboanga Peninsula while less likely for the rest of the country during the forecast period.

# Exceedance Probability > 100/150/200 mm

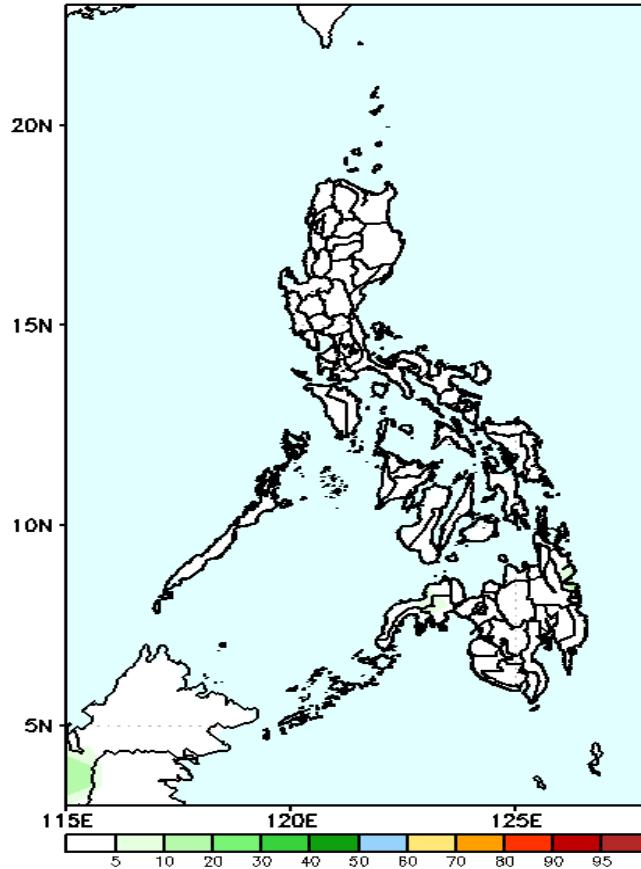
**Week 1: Apr 29- May 05, 2021**

GEFS Week-1 Exceedance Prob. > 100mm  
Valid: 20210429 - 20210505



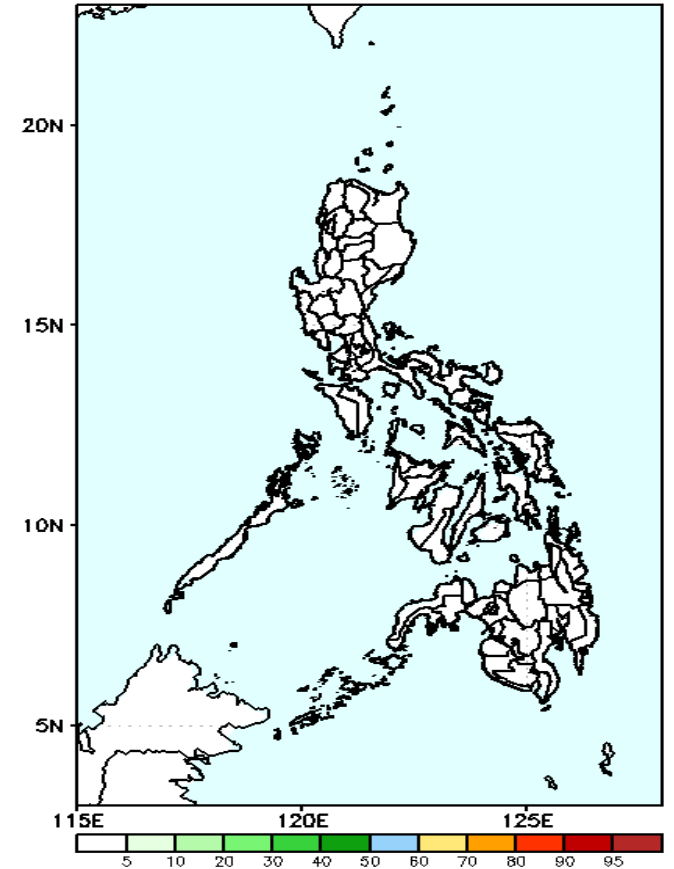
Less probability of rainfall to exceed 100mm in most parts of the country during the forecast period.

GEFS Week-1 Exceedance Prob. > 150mm  
Valid: 20210429 - 20210505



Less probability of rainfall to exceed 150mm in most parts of the country during the forecast period.

GEFS Week-1 Exceedance Prob. > 200mm  
Valid: 20210429 - 20210505



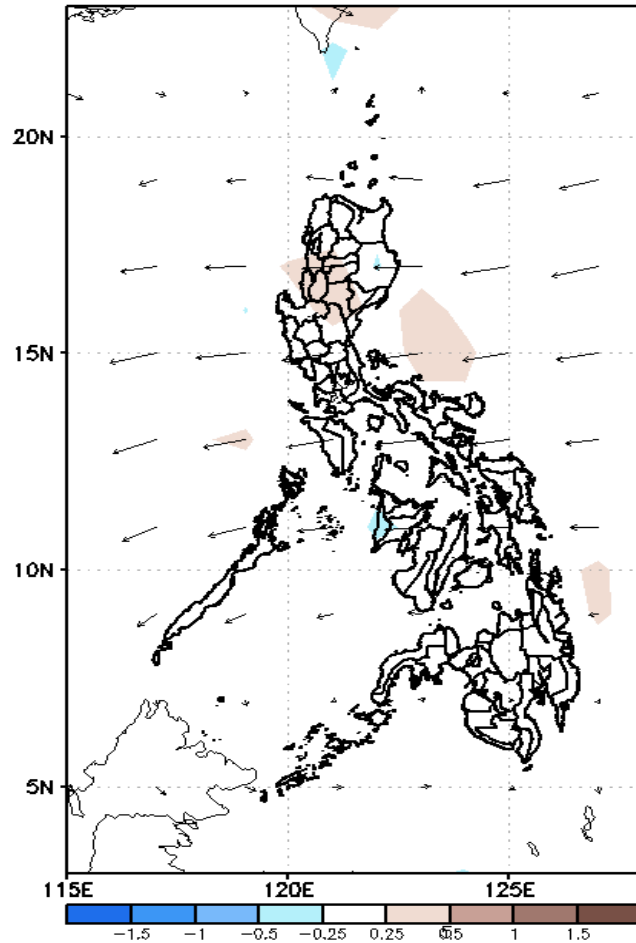
Less probability of rainfall to exceed 200mm in most parts of the country during the forecast period.



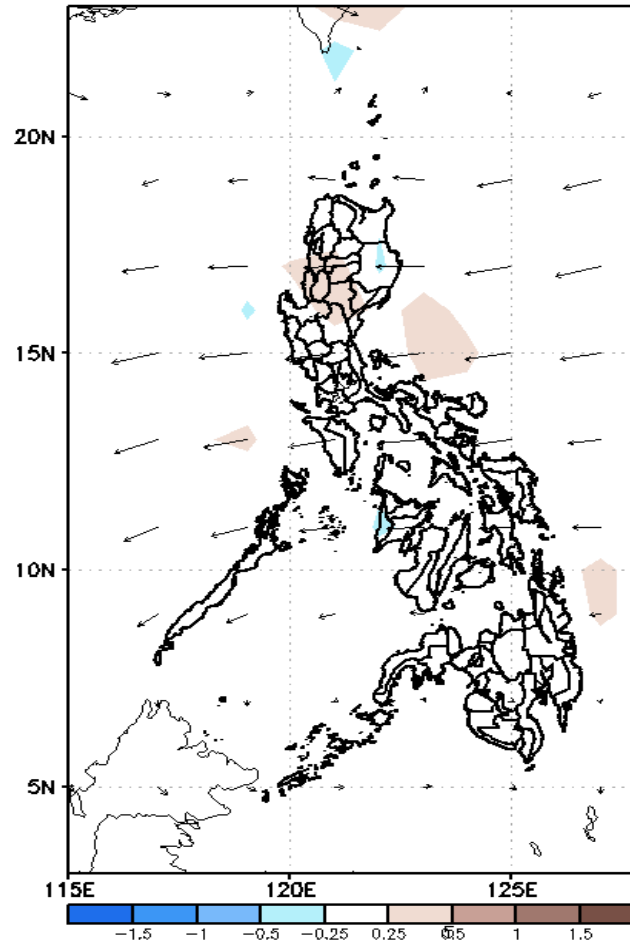
# GEFS Week-2 Forecasts: Divergence & Wind Anomaly

## Week 2: May 06- May 12, 2021

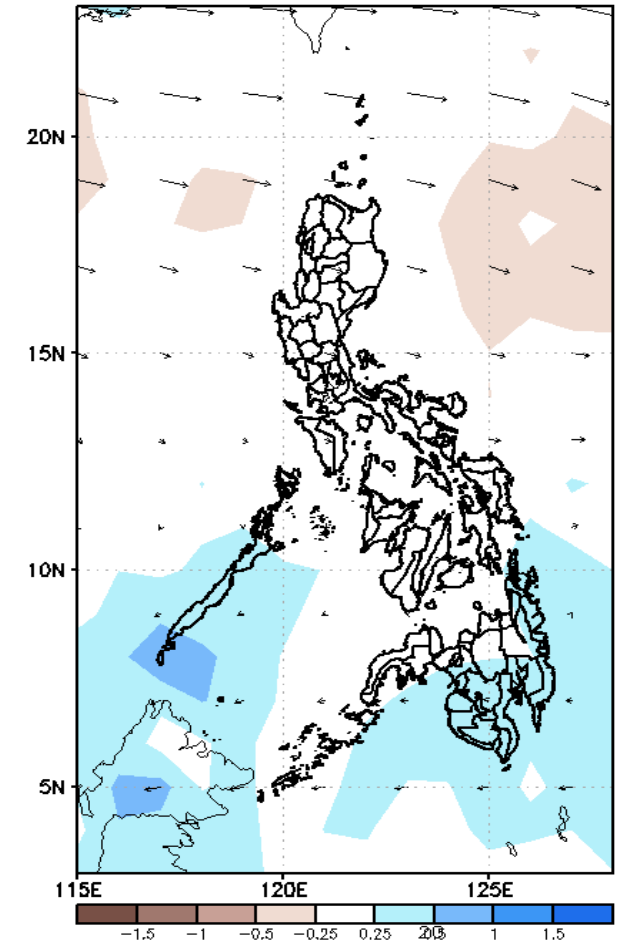
GEFS Week-2 850-hPa Divergence and Wind Anom  
Valid: 20210506 - 20210512



GEFS Week-2 700-hPa Divergence and Wind Anom  
Valid: 20210506 - 20210512



GEFS week-2 200-hPa Divergence and Wind Anom  
Valid: 20210506 - 20210512

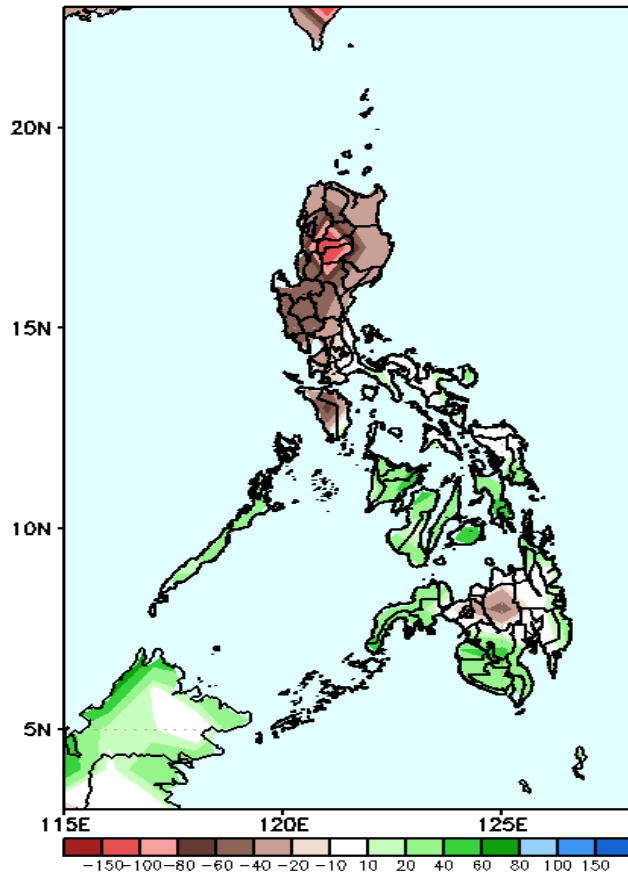


Upper and low level Divergence suggest likelihood of precipitation in Palawan and most parts of Mindanao. Easterlies affecting most parts of the country attributing to warmer temperatures during the forecast period.

# Precipitation Anomaly and Exceedance Probability > 25/50 mm

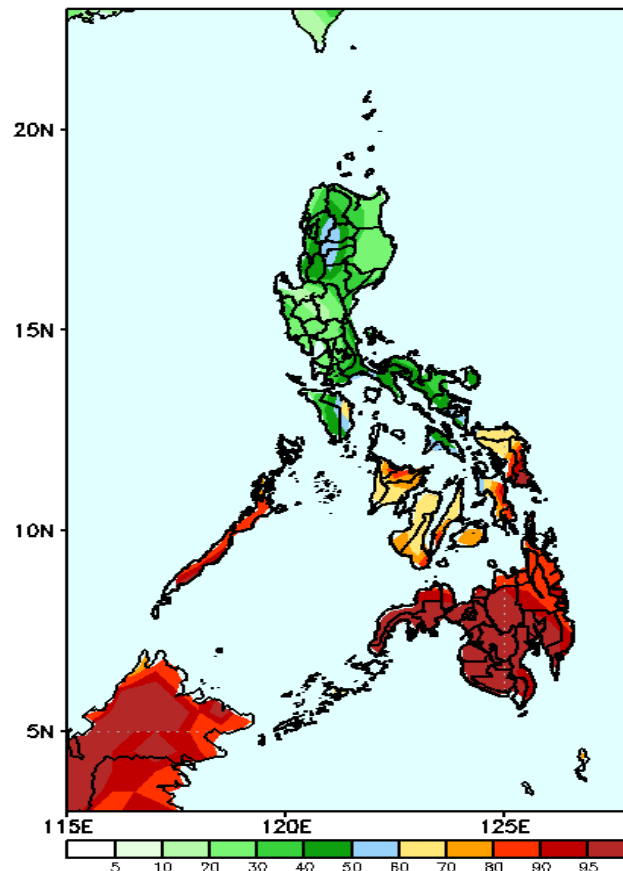
Week 2: May 06- May 12, 2021

GEFS Week-2 Precip. Anomaly  
Valid: 20210506 - 20210512



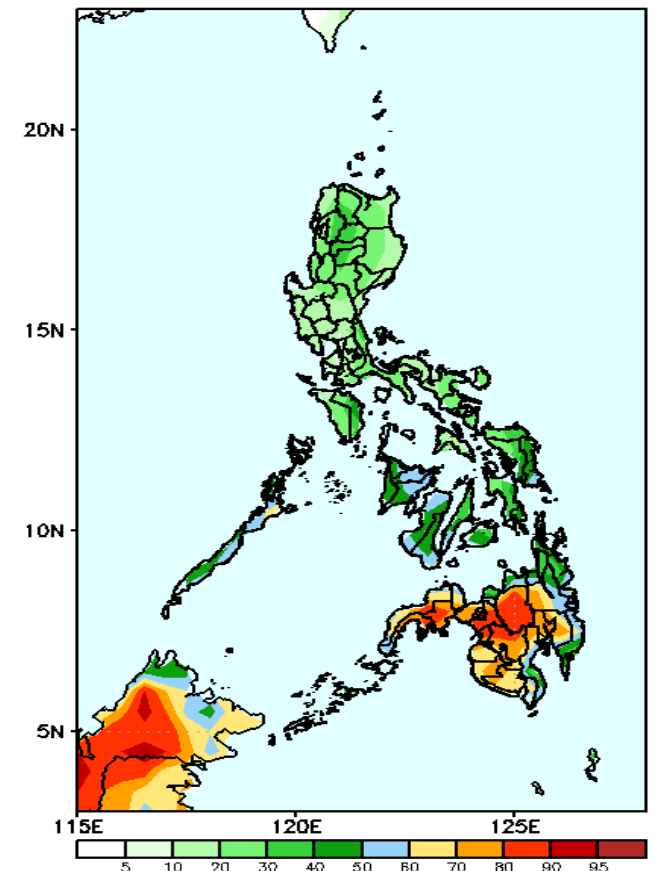
Rainfall deficit of up to 40-150mm is expected in most parts of Luzon (especially in Cordillera Region) and Bukidnon while increase of rainfall up to 60mm in most parts of Visayas and Mindanao.

GEFS Week-2 Exceedance Prob. > 25mm  
Valid: 20210506 - 20210512



High probability of rainfall to exceed 25mm in most parts of Visayas and Mindanao is expected while less likely for the rest of the country during the forecast period.

GEFS Week-2 Exceedance Prob. > 50mm  
Valid: 20210506 - 20210512



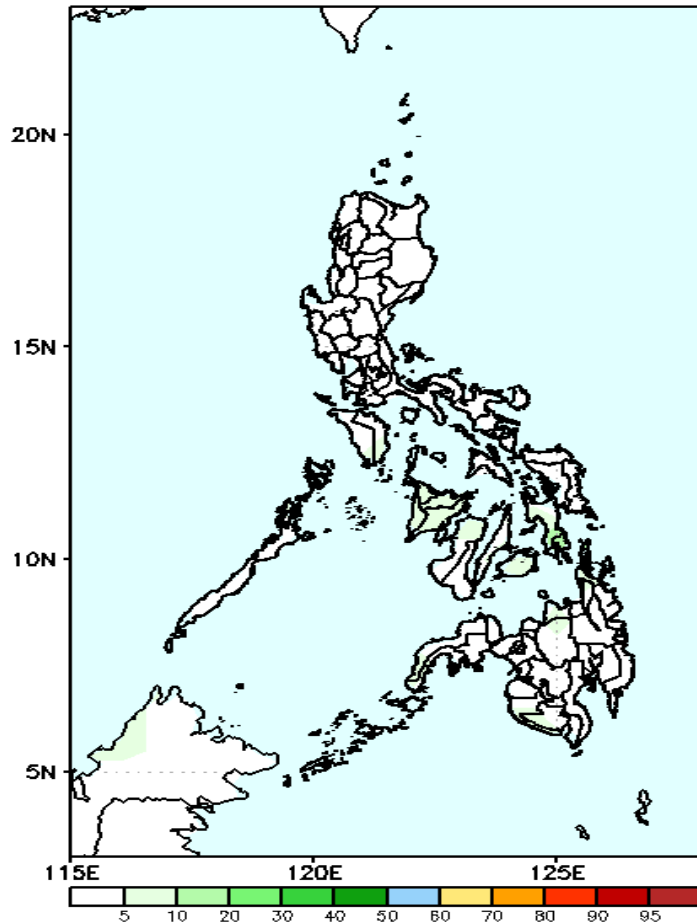
60-95% probability of rainfall to exceed 50mm in most parts of Mindanao while less likely for the rest of the country during the forecast period.



# Exceedance Probability > 100/150/200 mm

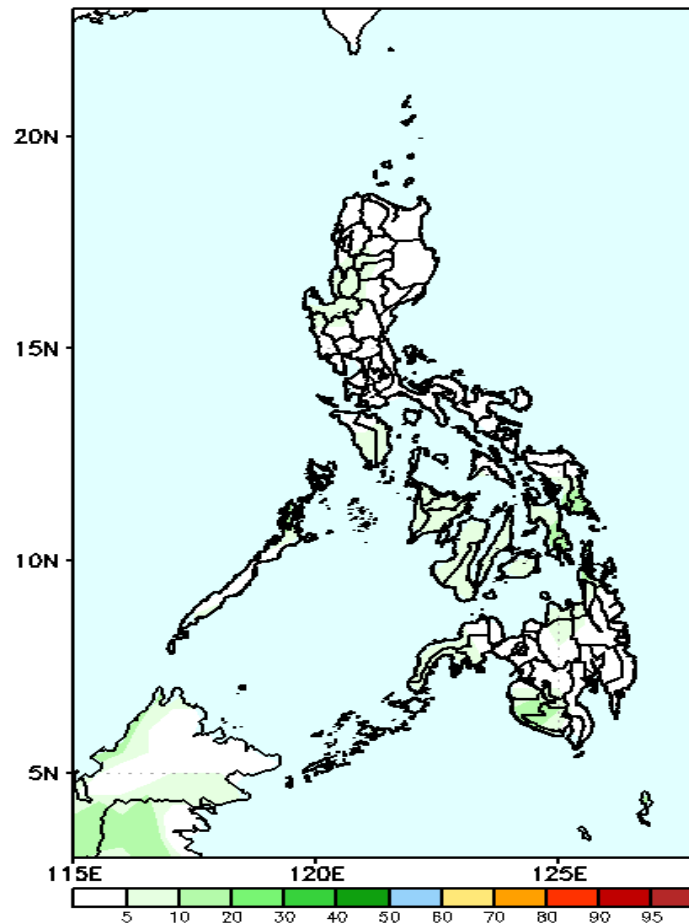
## Week 2: May 06- May 12, 2021

GEFS Week-2 Exceedance Prob. > 200mm  
Valid: 20210506 – 20210512



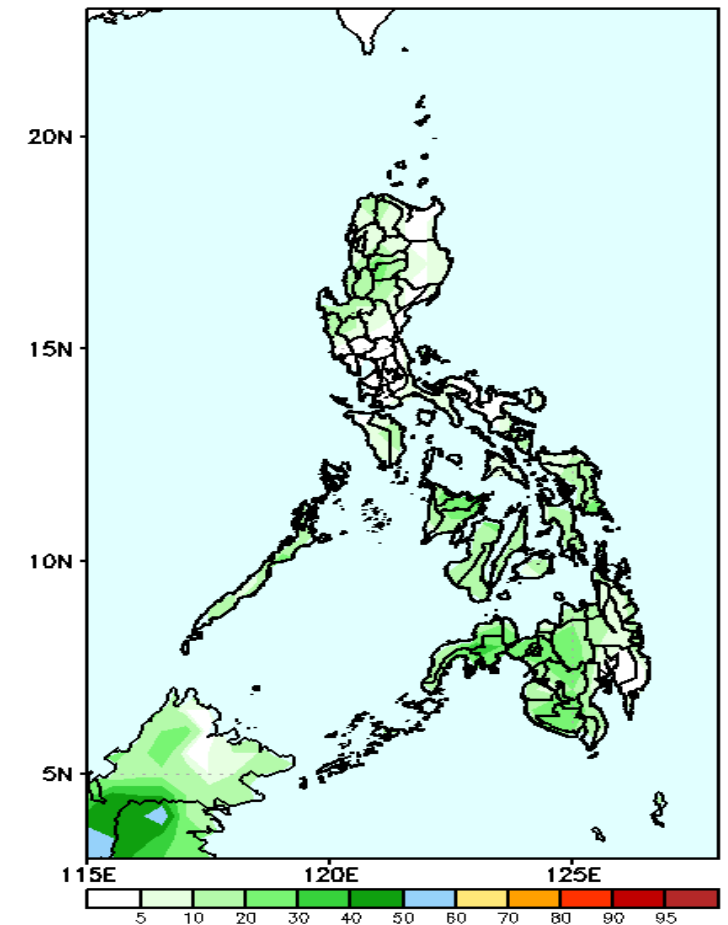
Less probability of rainfall to exceed 100mm in most parts of the country during the forecast period.

GEFS Week-2 Exceedance Prob. > 150mm  
Valid: 20210506 – 20210512



Less probability of rainfall to exceed 150mm in most parts of the country during the forecast period.

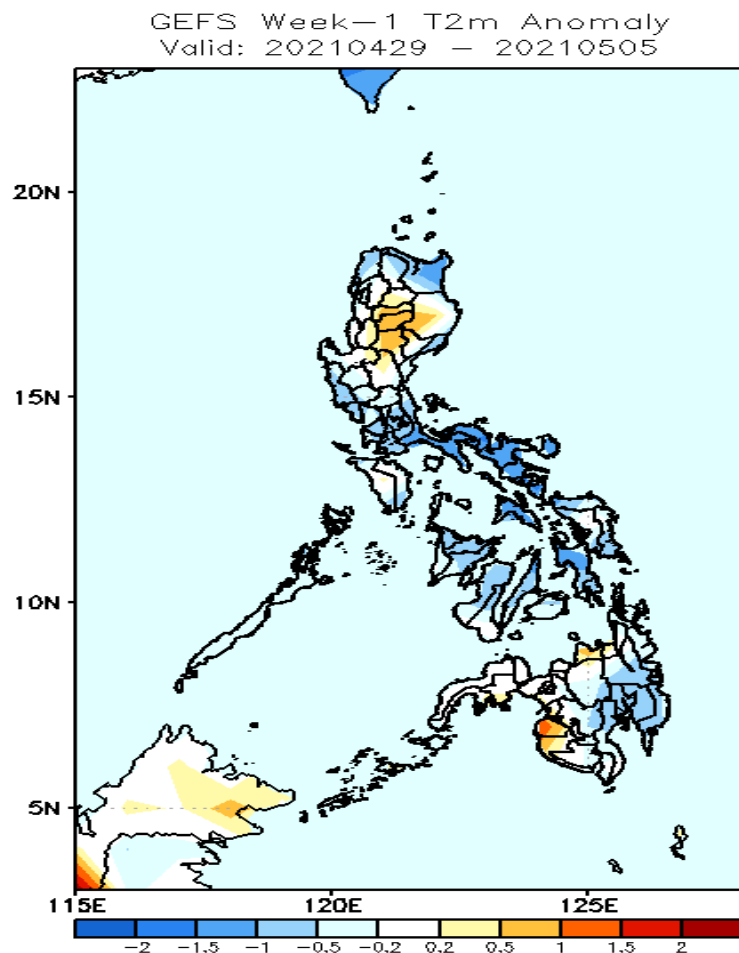
GEFS Week-2 Exceedance Prob. > 100mm  
Valid: 20210506 – 20210512



Less probability of rainfall to exceed 200mm in most parts of the country during the forecast period.

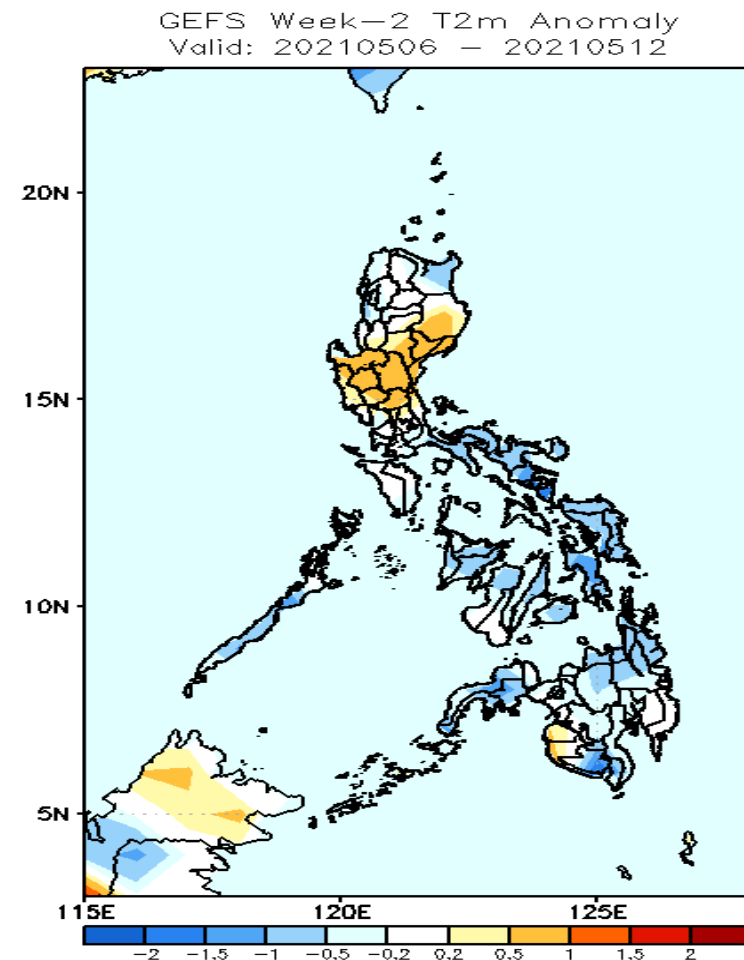


# GEFS Week-1 & 2 Forecasts: T2m Anomaly



## 2m Temperature Week 1: Apr 29- May 05, 2021

Slightly cooler to cooler than average surface air temperature will likely experience in northern and southern Luzon, in most parts of Visayas and southeastern Mindanao while average to slightly warmer for the rest of the country during the forecast period.



## 2m Temperature Week 2: May 06- May 12, 2021

Slightly cooler to cooler than average surface air temperature will likely experience in most parts Visayas and Mindanao while Luzon will likely receive average to slightly warmer temperature during the forecast period.