



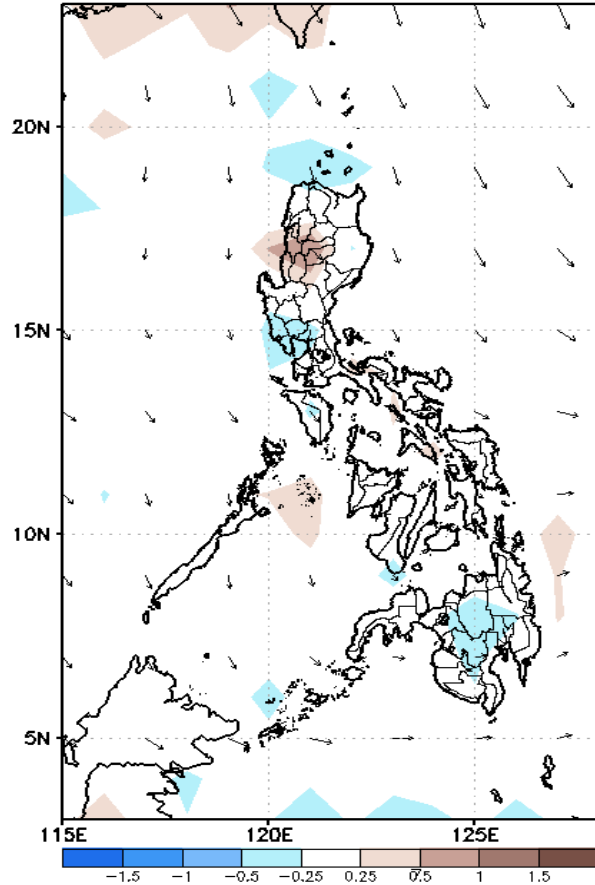
Week 1 & Week 2 Forecast for the Philippines using GEFS Model



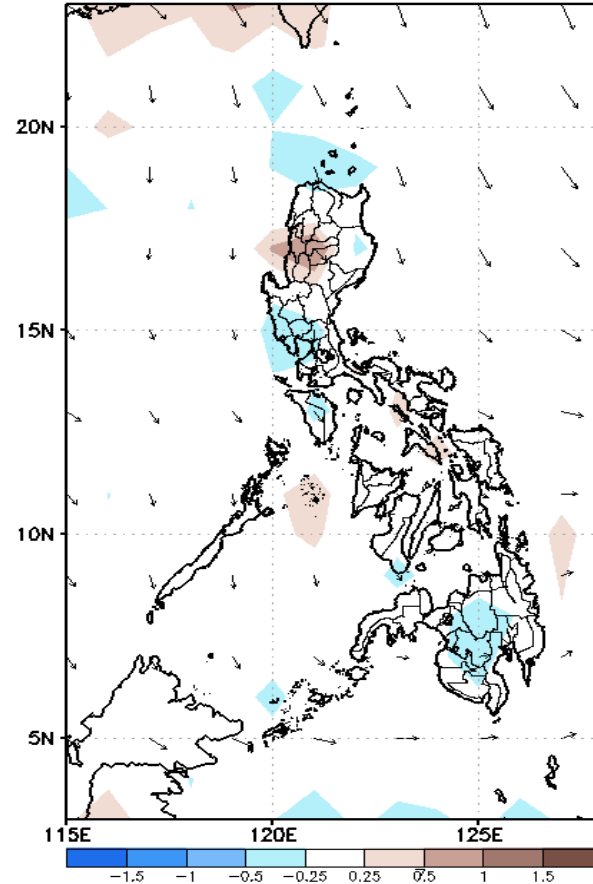
GEFS Week-1 Forecasts: Divergence & Wind Anomaly

Week 1: Mar 29-Apr 04, 2021

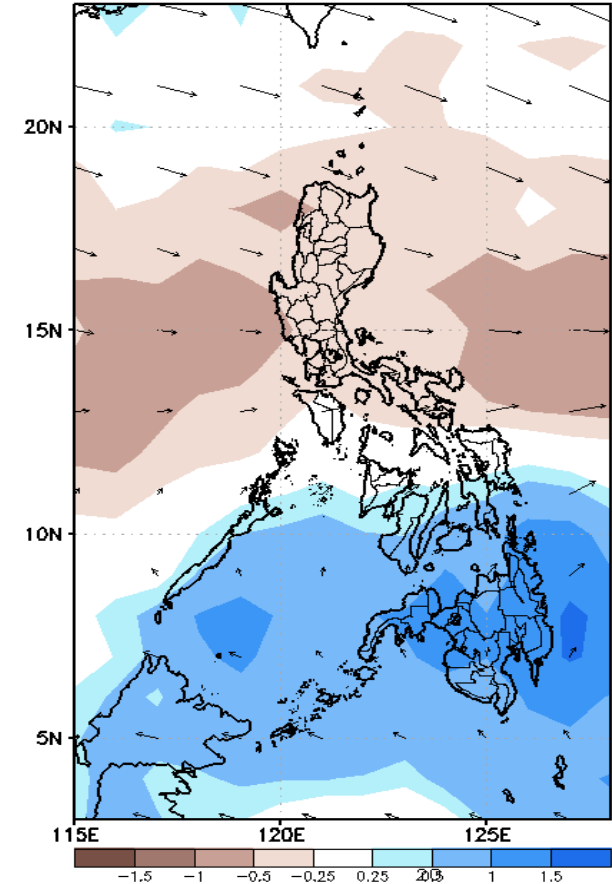
GEFS Week-1 850-hPa Divergence and Wind Anom
Valid: 20210329 - 20210404



GEFS Week-1 700-hPa Divergence and Wind Anom
Valid: 20210329 - 20210404



GEFS Week-1 200-hPa Divergence and Wind Anom
Valid: 20210329 - 20210404

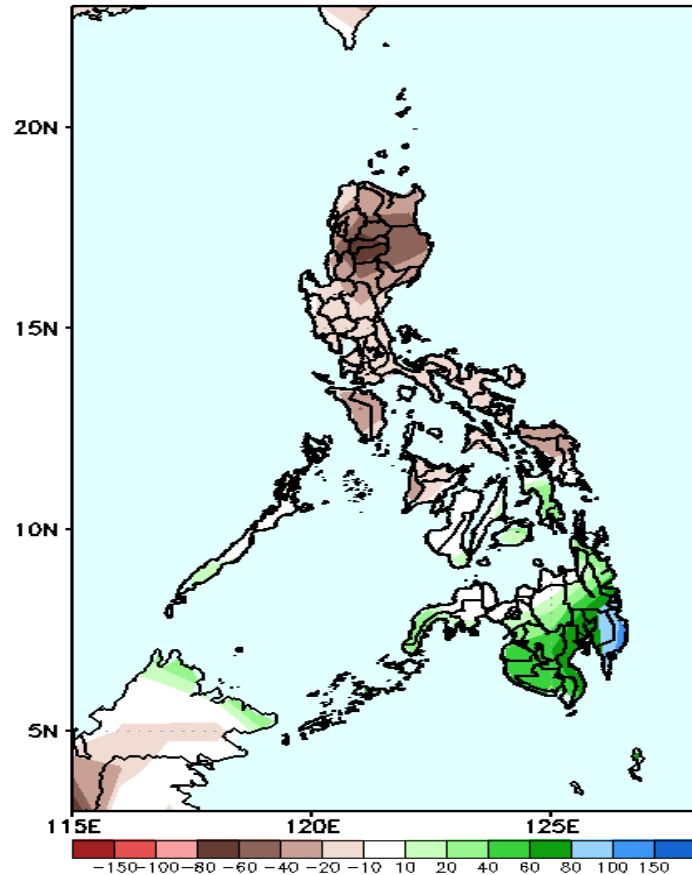


Upper and low level Divergence suggest likelihood of precipitation in Palawan, most parts of Western and Central Visayas and most parts of Mindanao. Easterlies affecting most parts of the country during the forecast period.

Precipitation Anomaly and Exceedance Probability > 25/50 mm

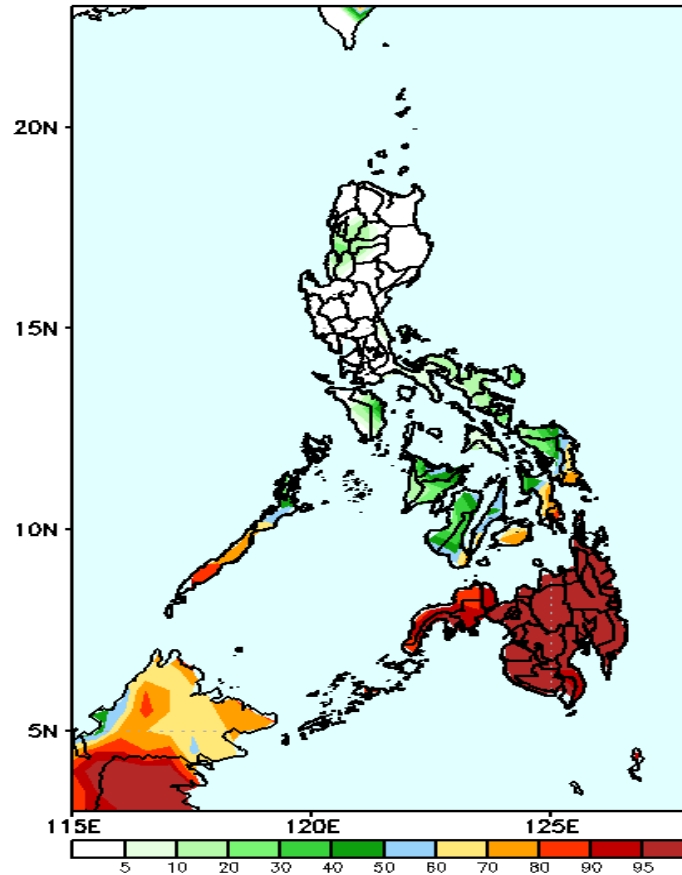
Week 1: Mar 29-Apr 04, 2021

GEFS Week-1 Precip Anomaly
Valid: 20210329 - 20210404



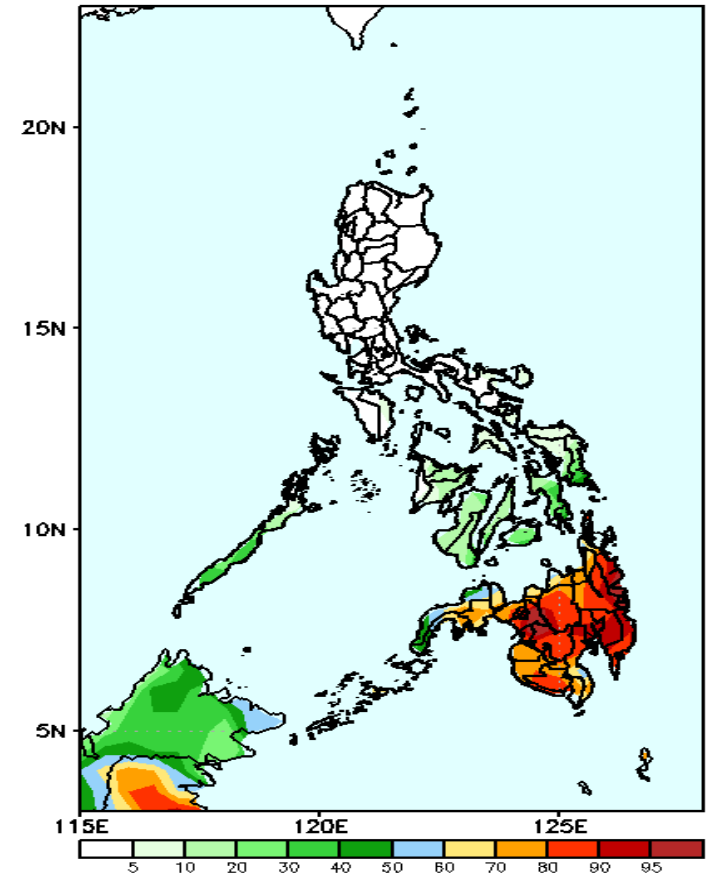
Rainfall deficit of up to 80mm is expected in most parts of Luzon and Visayas while increase of rainfall of 40-100mm in most parts of Mindanao during the forecast period.

GEFS Week-1 Exceedance Prob. > 25mm
Valid: 20210329 - 20210404



High probability of rainfall to exceed 25mm in Bohol, Southern Leyte, Eastern Samar, southern Palawan and most parts of Mindanao while less likely for the rest of the country during the forecast period.

GEFS Week-1 Exceedance Prob. > 50mm
Valid: 20210329 - 20210404

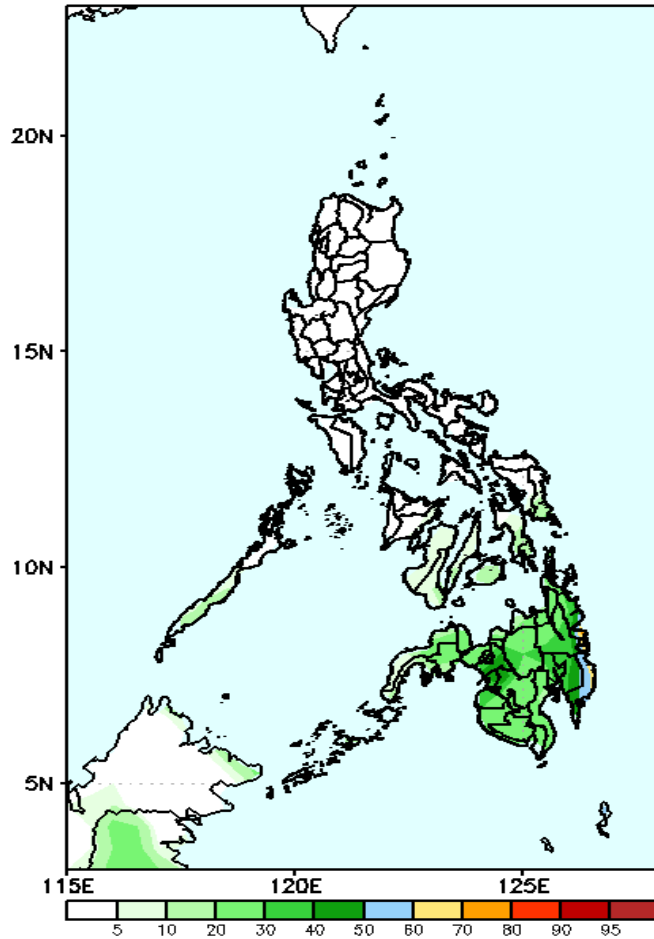


High probability of rainfall to exceed 50mm in most parts of Mindanao while less likely in Luzon and Visayas during the forecast period.

Exceedance Probability > 100/150/200 mm

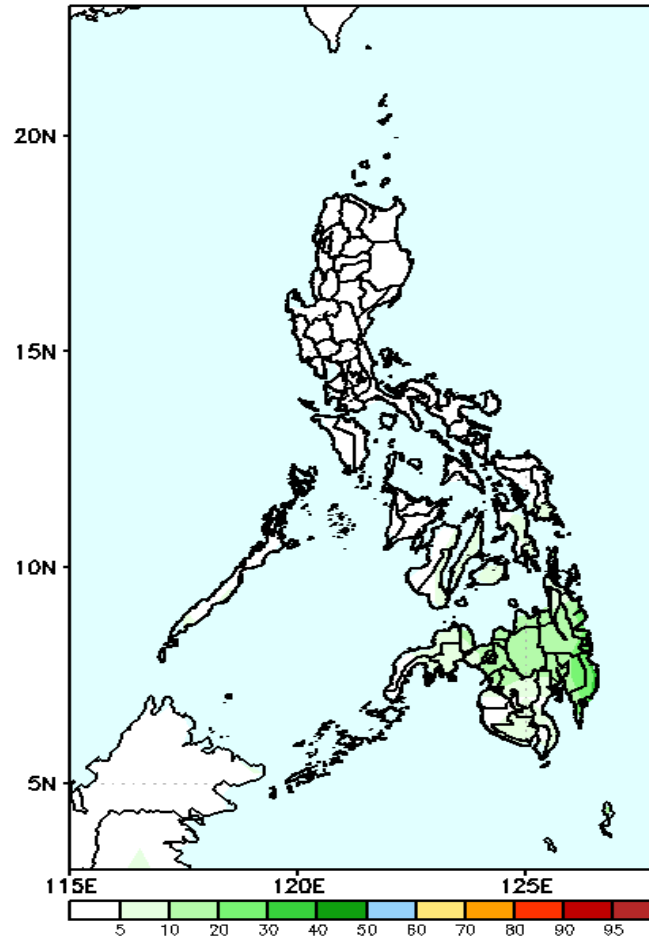
Week 1: Mar 29-Apr 04, 2021

GEFS Week-1 Exceedance Prob. > 100mm
Valid: 20210329 - 20210404



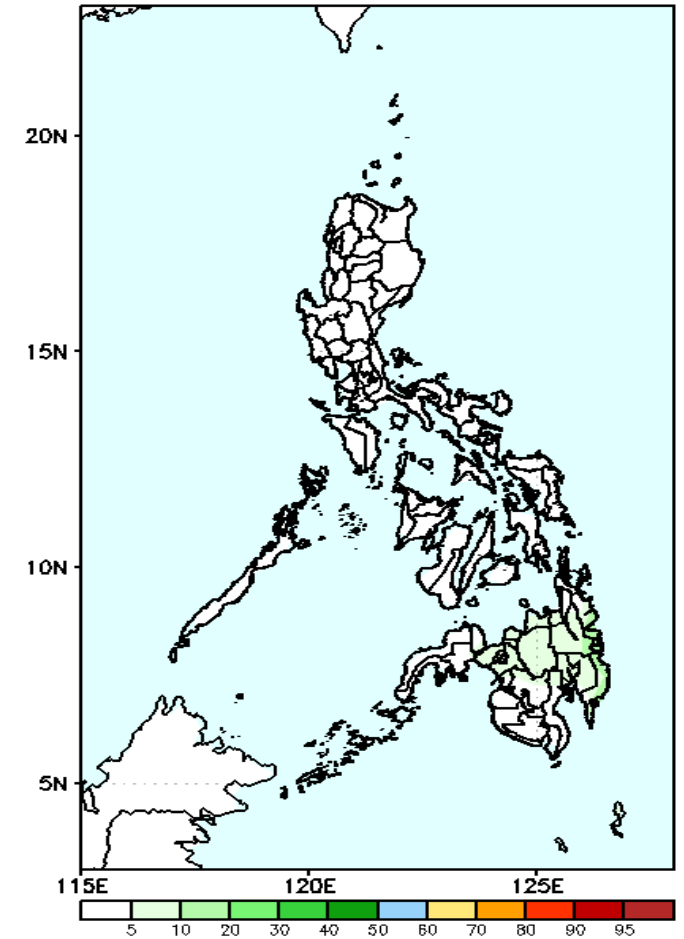
Less probability of rainfall to exceed 100mm in most parts of the country during the forecast period.

GEFS Week-1 Exceedance Prob. > 150mm
Valid: 20210329 - 20210404



Less probability of rainfall to exceed 150mm in most parts of the country during the forecast period.

GEFS Week-1 Exceedance Prob. > 200mm
Valid: 20210329 - 20210404



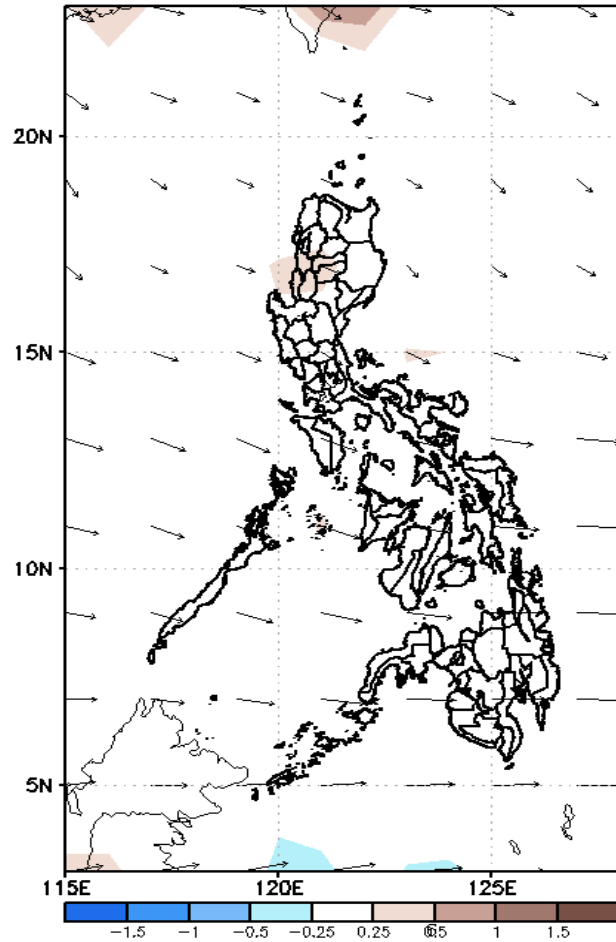
Less probability of rainfall to exceed 200mm in most parts of the country during the forecast period.



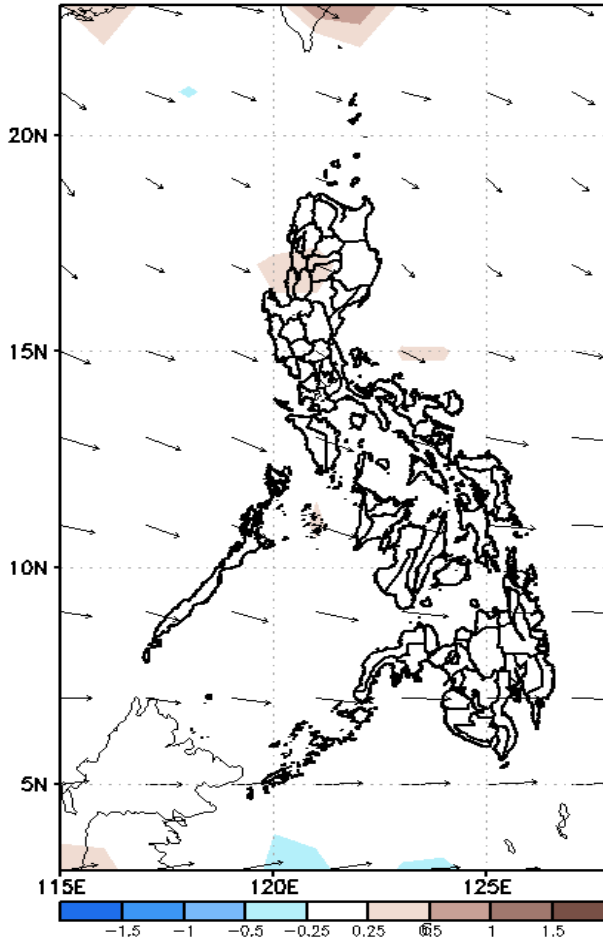
GEFS Week-2 Forecasts: Divergence & Wind Anomaly

Week 2: April 05-11, 2021

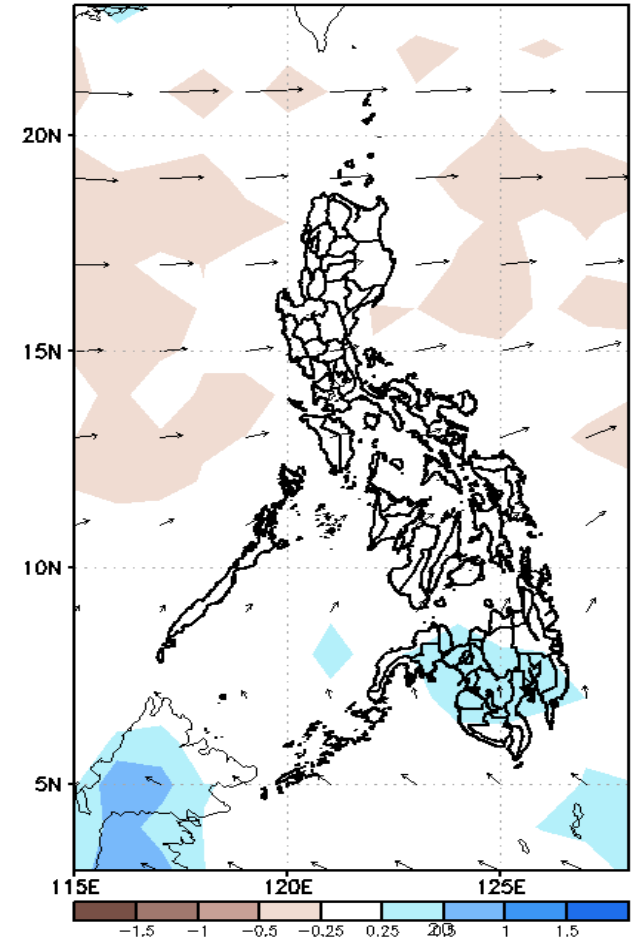
GEFS Week-2 850-hPa Divergence and Wind Anom.
Valid: 20210405 - 20210411



GEFS Week-2 700-hPa Divergence and Wind Anom.
Valid: 20210405 - 20210411



GEFS week-2 200-hPa Divergence and Wind Anom.
Valid: 20210405 - 20210411

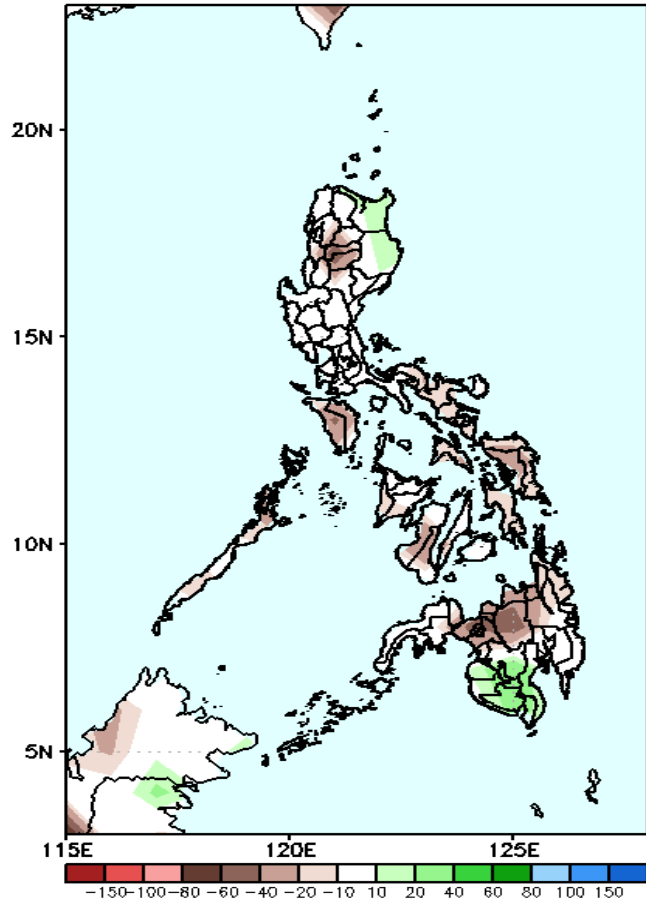


Upper and low level Divergence suggest less likelihood of precipitation in most parts of the country. Easterlies affecting most parts of the country during the forecast period.

Precipitation Anomaly and Exceedance Probability > 25/50 mm

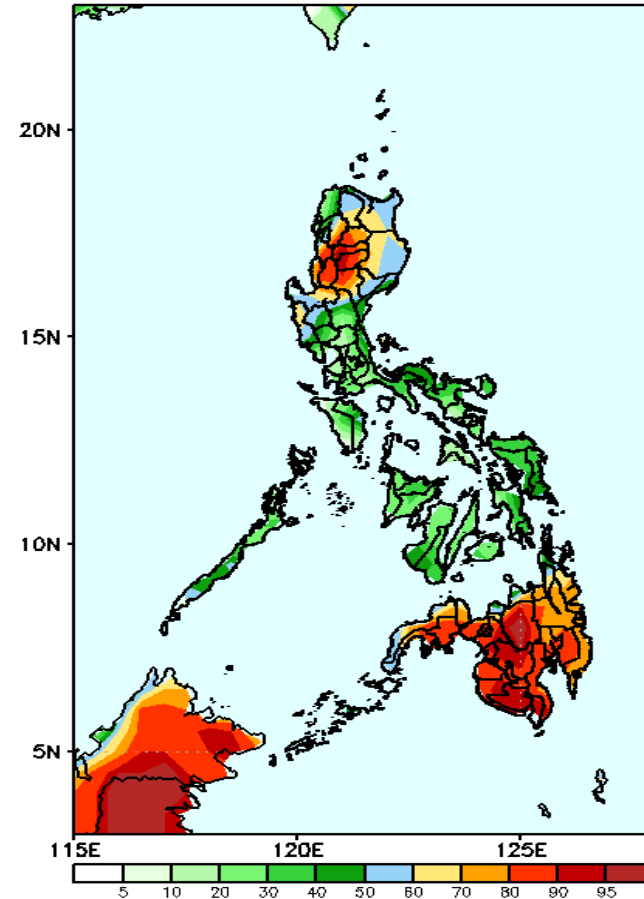
Week 2: April 05-11, 2021

GEFS Week-2 Precip. Anomaly
Valid: 20210405 - 20210411



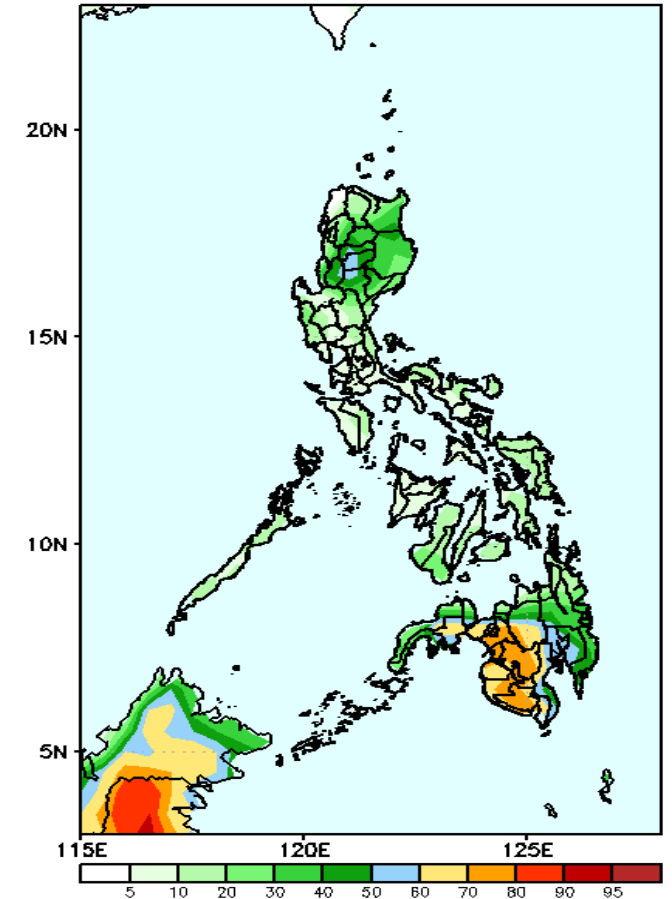
Rainfall deficit of up to 80mm is expected in most parts of the country except in Cagayan & Isabela and southwestern Mindanao where increase of rainfall up to 50mm is more likely during the forecast period.

GEFS Week-2 Exceedance Prob. > 25mm
Valid: 20210405 - 20210411



High probability of rainfall to exceed 25mm in most parts of northern half of Luzon and most parts of Mindanao while less likely for the rest of the country during the forecast period.

GEFS Week-2 Exceedance Prob. > 50mm
Valid: 20210405 - 20210411

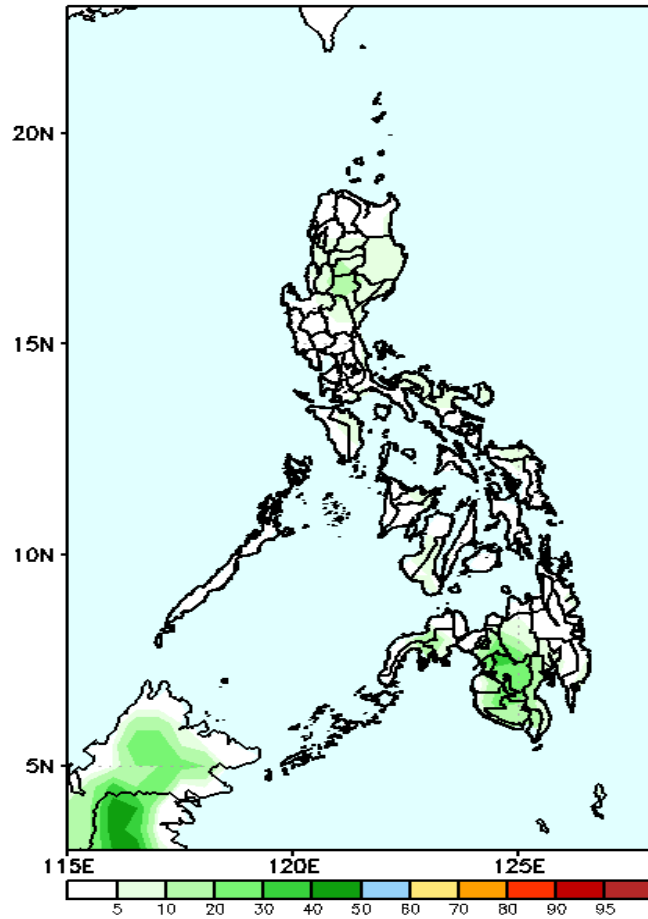


Less probability of rainfall to exceed 50mm in most parts of the country except in western parts of Mindanao with 60-80% chance during the forecast period.

Exceedance Probability > 100/150/200 mm

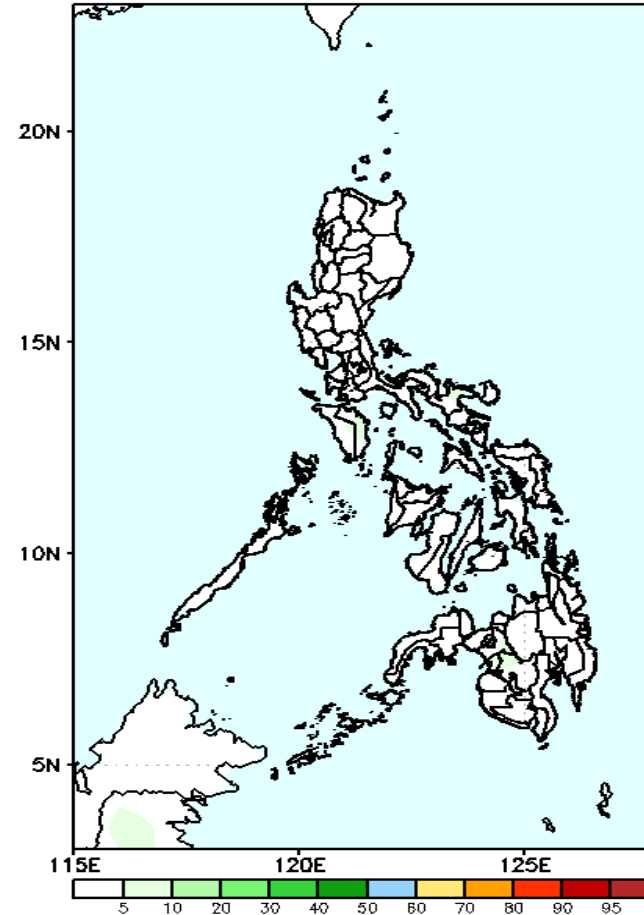
Week 2: April 05-11, 2021

GEFS Week-2 Exceedance Prob. > 100mm
Valid: 20210405 - 20210411



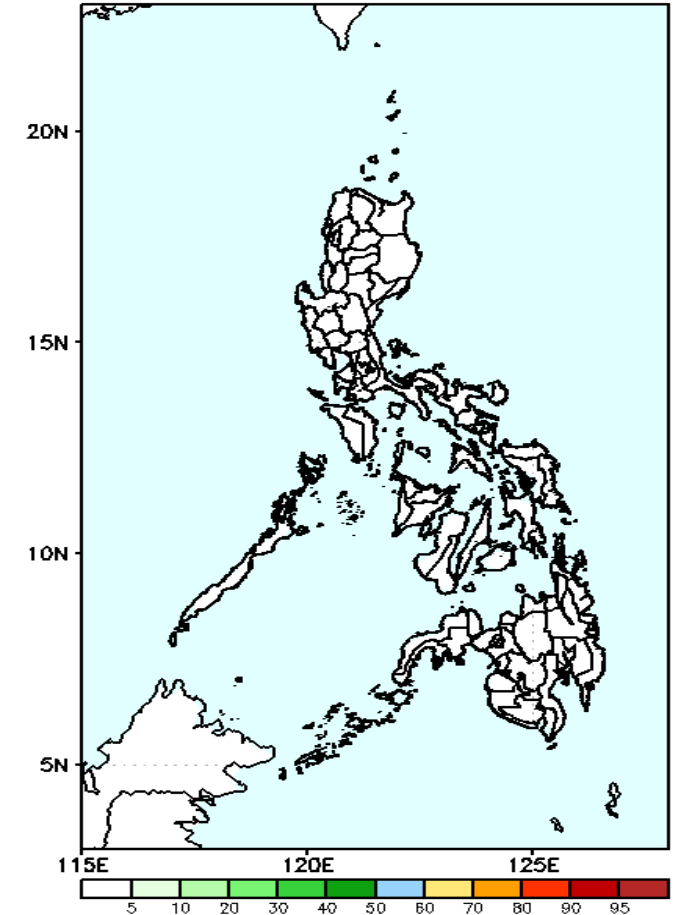
Less probability of rainfall to exceed 100mm in most parts of the country during the forecast period.

GEFS Week-2 Exceedance Prob. > 150mm
Valid: 20210405 - 20210411



Less probability of rainfall to exceed 150mm in most parts of the country during the forecast period.

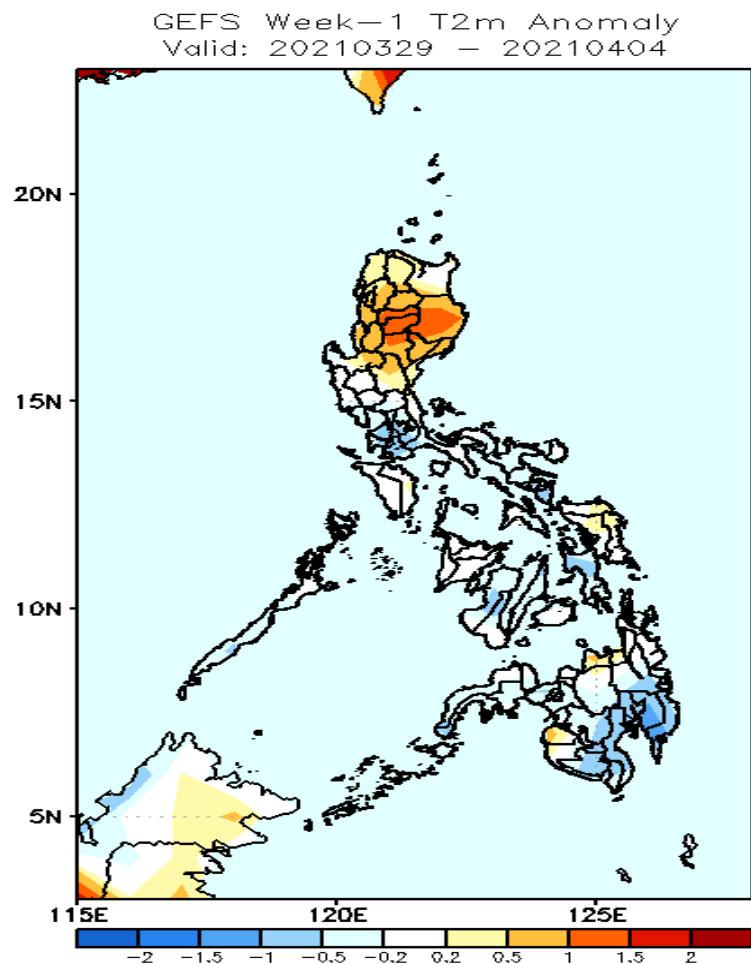
GEFS Week-2 Exceedance Prob. > 200mm
Valid: 20210405 - 20210411



Less probability of rainfall to exceed 200mm in most parts of the country during the forecast period.

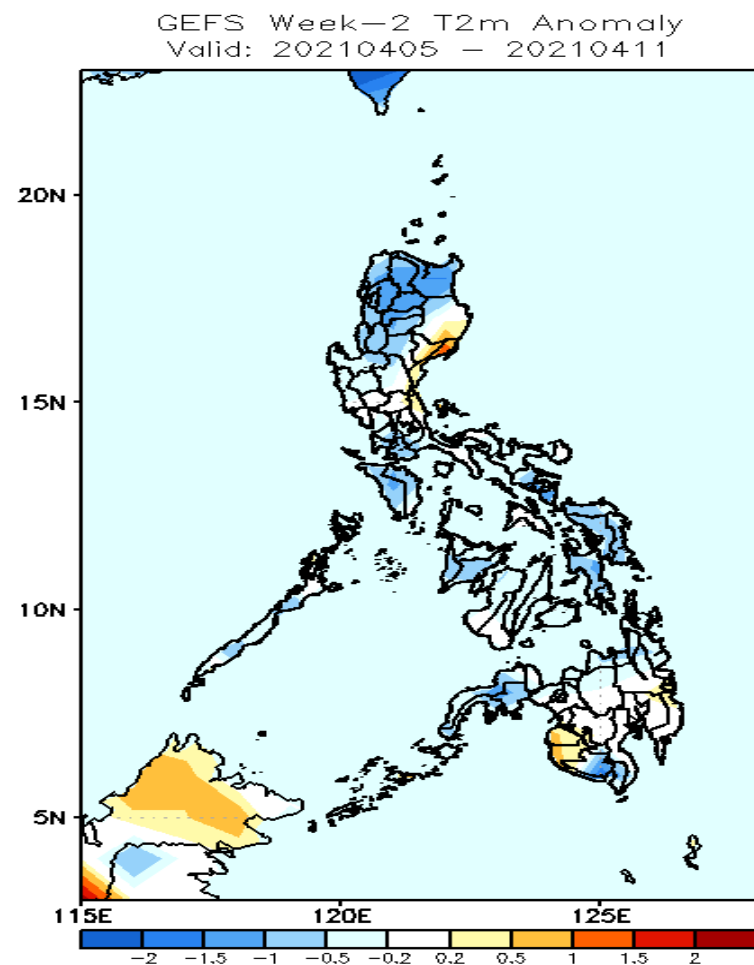


GEFS Week-1 & 2 Forecasts: T2m Anomaly



2m Temperature Week 1: Mar 29-Apr 04, 2021

Slightly warmer to warmer than average surface air temperatures will likely experience in most parts of Cagayan Valley, CAR and Region I while average to slightly cooler air temperatures for the rest of the country during the forecast period.



2m Temperature Week 2: April 05-11, 2021

Cooler than average surface air temperature will likely experience in most parts of northern Luzon, Mindoro, southern parts of Bicol Region, most parts of Visayas, Zamboanga Peninsula, Sarangani & South Cotabato while average to slightly warmer for the rest of the country during the forecast period.