



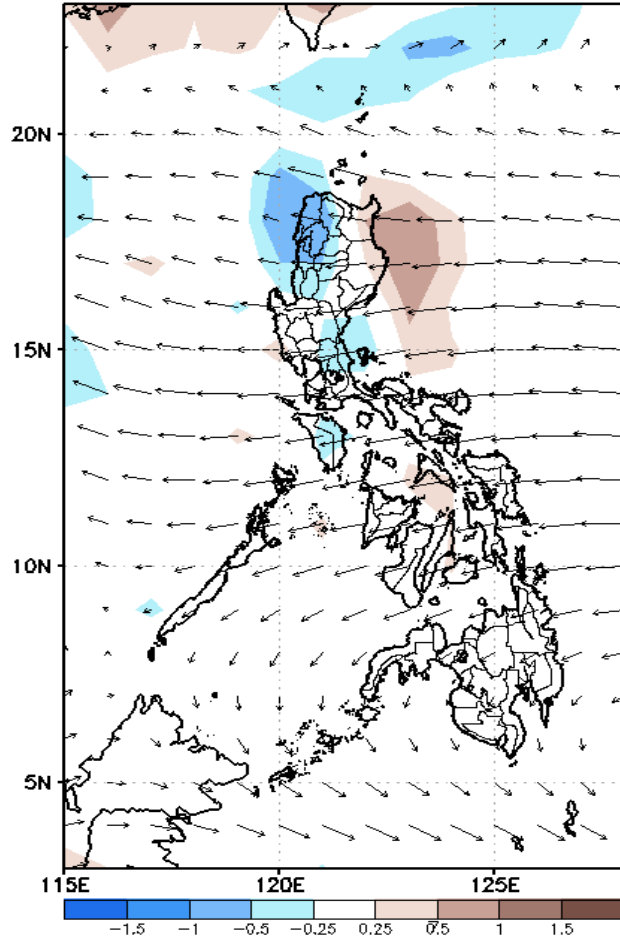
Week 1 & Week 2 Forecast for the Philippines using GEFS Model



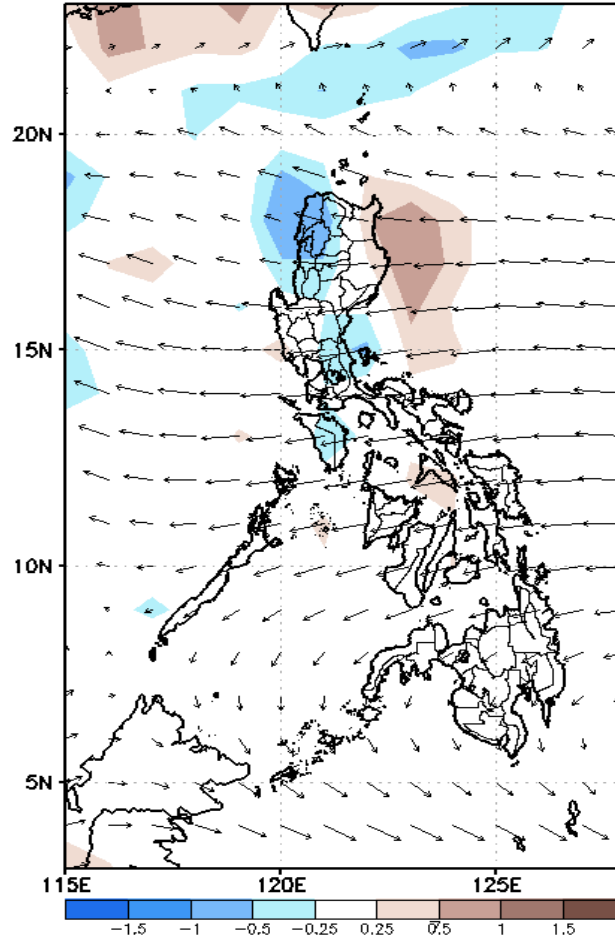
GEFS Week-1 Forecasts: Divergence & Wind Anomaly

Week 1: Mar 30- Apr 05, 2022

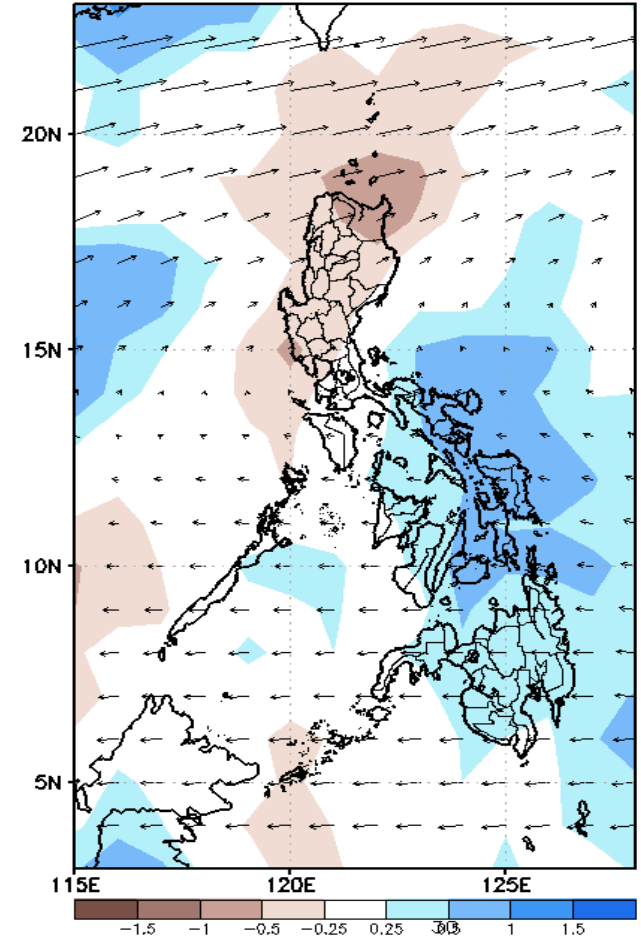
GEFS Week-1 850-hPa Divergence and Wind Anom
Valid: 20220330 - 20220405



GEFS Week-1 700-hPa Divergence and Wind Anom
Valid: 20220330 - 20220405



GEFS Week-1 200-hPa Divergence and Wind Anom
Valid: 20220330 - 20220405

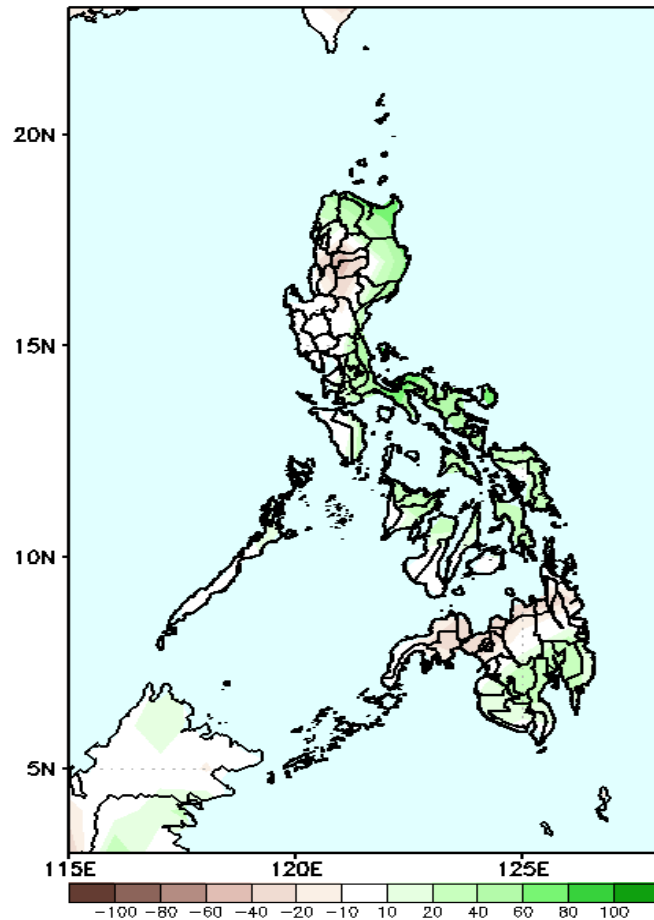


Upper and low level Divergence suggest a likelihood of light to moderate precipitation in Bicol region and most parts of Visayas and Mindanao. Easterlies affecting most parts of the country attributing to warmer temperatures during the forecast period.

Precipitation Anomaly and Exceedance Probability > 25/50 mm

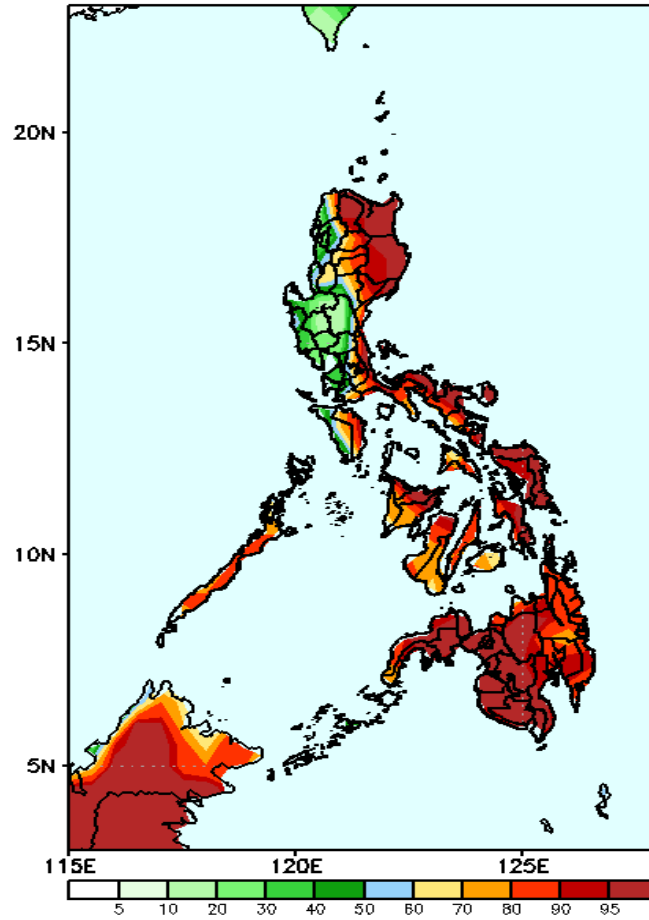
Week 1: Mar 30- Apr 05, 2022

GEFS Week-1 Precip Anomaly
Valid: 20220330 - 20220405



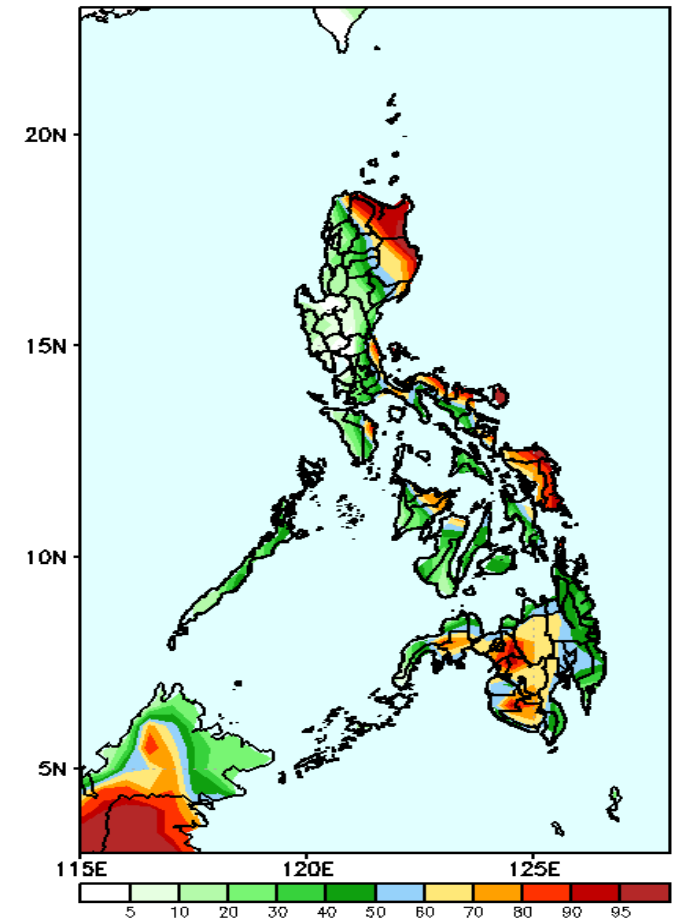
Increase of rainfall of 40-90mm in most parts of the country except in some areas in Cordillera Region and northern Mindanao during the forecast period.

GEFS Week-1 Exceedance Prob. > 25mm
Valid: 20220330 - 20220405



High probability of rainfall to exceed 25mm in most parts of the country except in Ilocos Region and Central Luzon during the forecast period.

GEFS Week-1 Exceedance Prob. > 50mm
Valid: 20220330 - 20220405

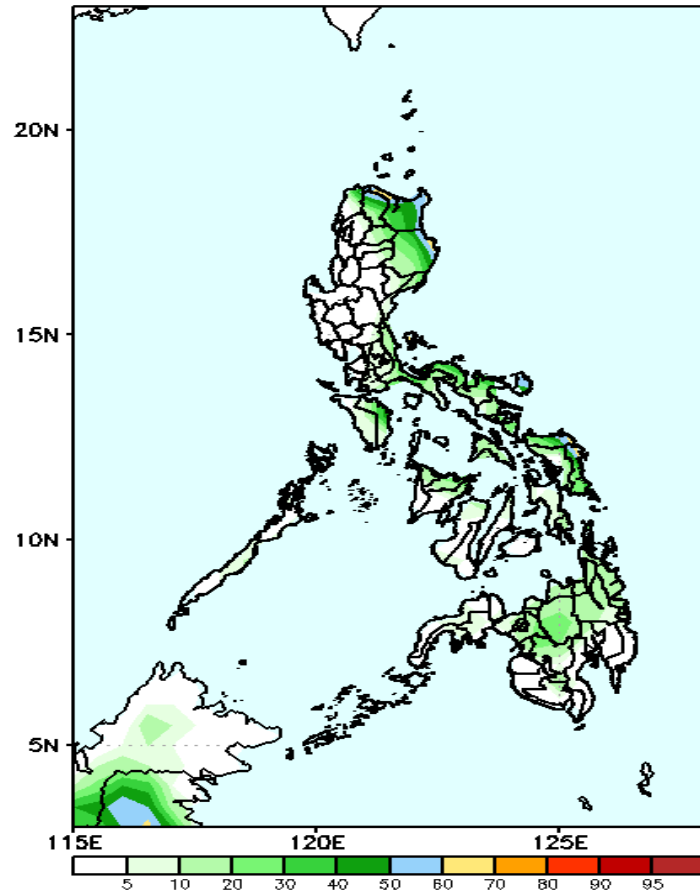


high probability of rainfall to exceed 50mm in Apayao, Cagayan, Isabela, parts of Quezon, Or. Mindoro & Bicol Region, Capiz and most parts of Eastern Samar & western Mindanao while less likely for the rest of the country during the forecast period.

Exceedance Probability > 100/150/200 mm

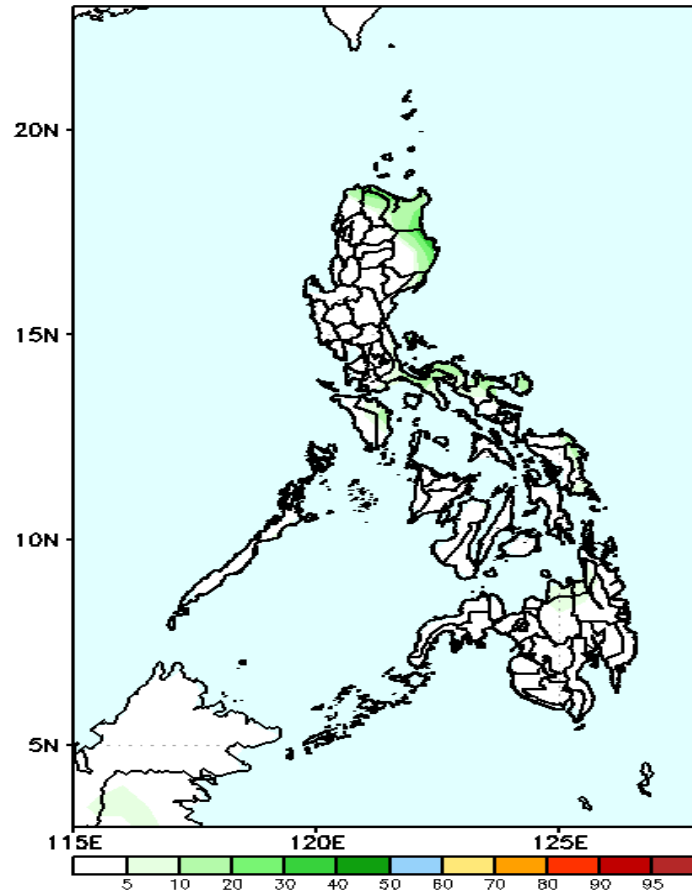
Week 1: Mar 30- Apr 05, 2022

GEFS Week-1 Exceedance Prob. > 100mm
Valid: 20220330 - 20220405



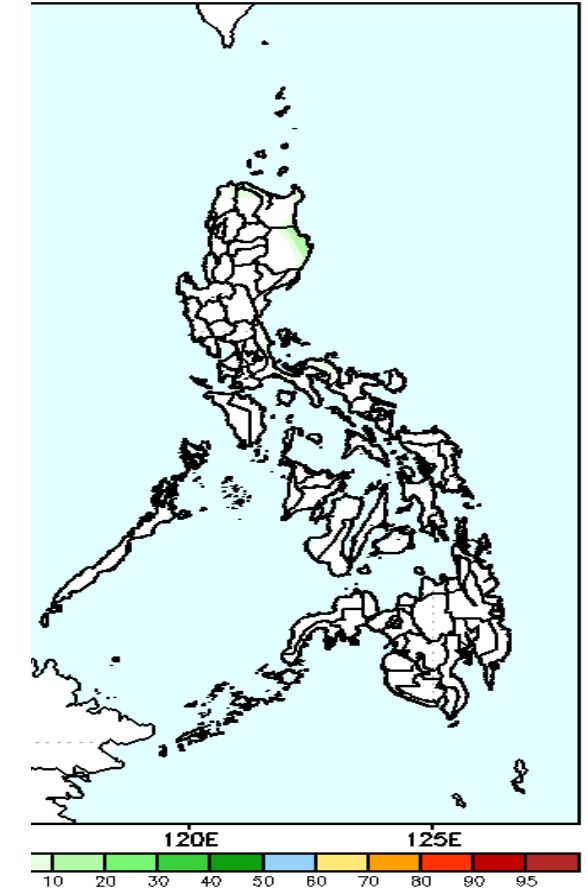
Low probability of rainfall to exceed 100mm in most parts of the country during the forecast period.

GEFS Week-1 Exceedance Prob. > 150mm
Valid: 20220330 - 20220405



Low probability of rainfall to exceed 150mm in most parts of the country during the forecast period.

Week-1 Exceedance Prob. > 200mm
Valid: 20220330 - 20220405



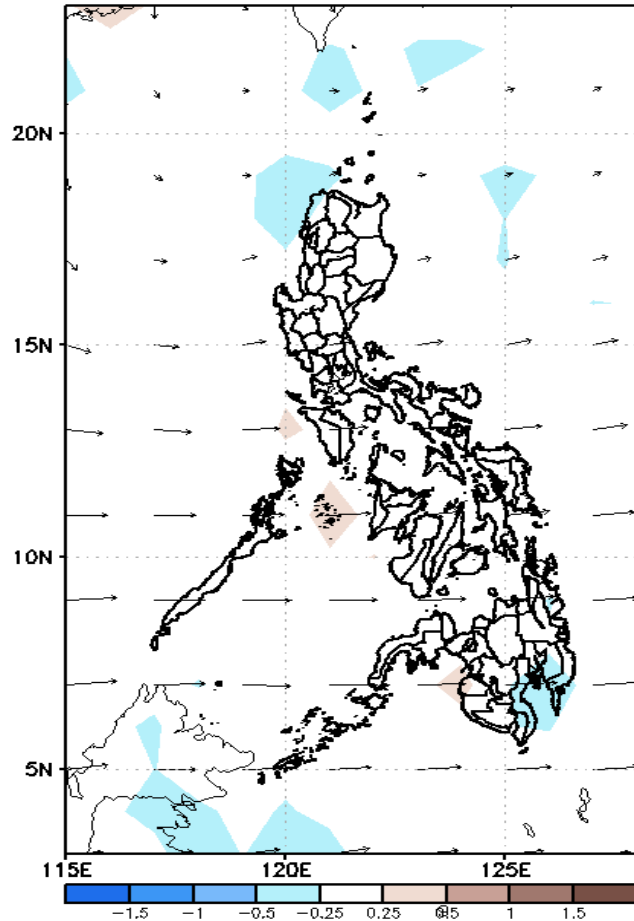
Low probability of rainfall to exceed 200mm in most parts of the country during the forecast period.



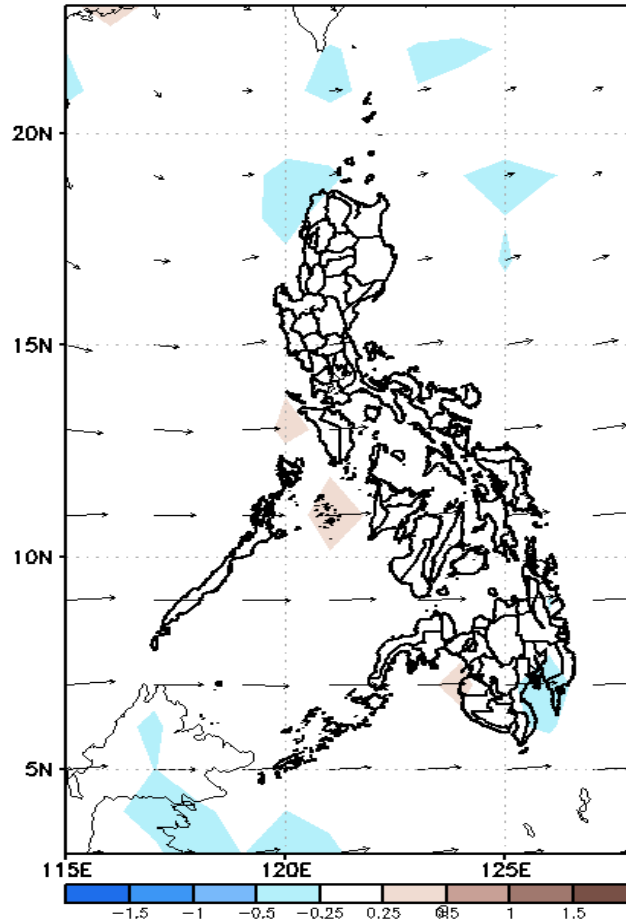
GEFS Week-2 Forecasts: Divergence & Wind Anomaly

Week 2: Apr 06-12, 2022

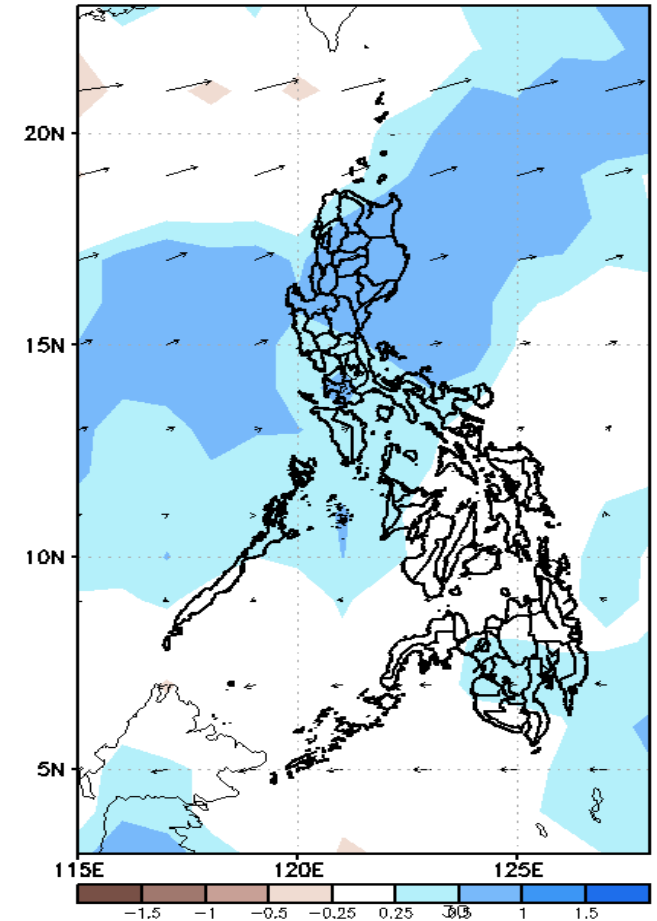
GEFS Week-2 850-hPa Divergence and Wind Anom
Valid: 20220406 – 20220412



GEFS Week-2 700-hPa Divergence and Wind Anom
Valid: 20220406 – 20220412



GEFS week-2 200-hPa Divergence and Wind Anom
Valid: 20220406 – 20220412

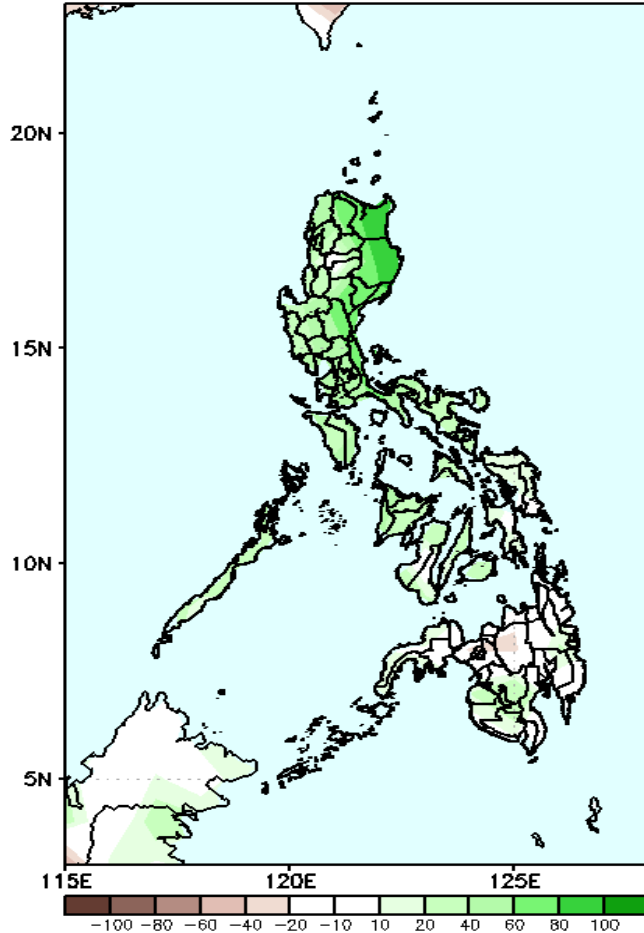


Upper and low level Divergence suggest a likelihood of light to moderate precipitation in most parts of Luzon, Aklan, Iloilo and some parts of Central and Southeastern Mindanao. Easterlies affecting most parts of the country attributing to warmer temperatures during the forecast period.

Precipitation Anomaly and Exceedance Probability > 25/50 mm

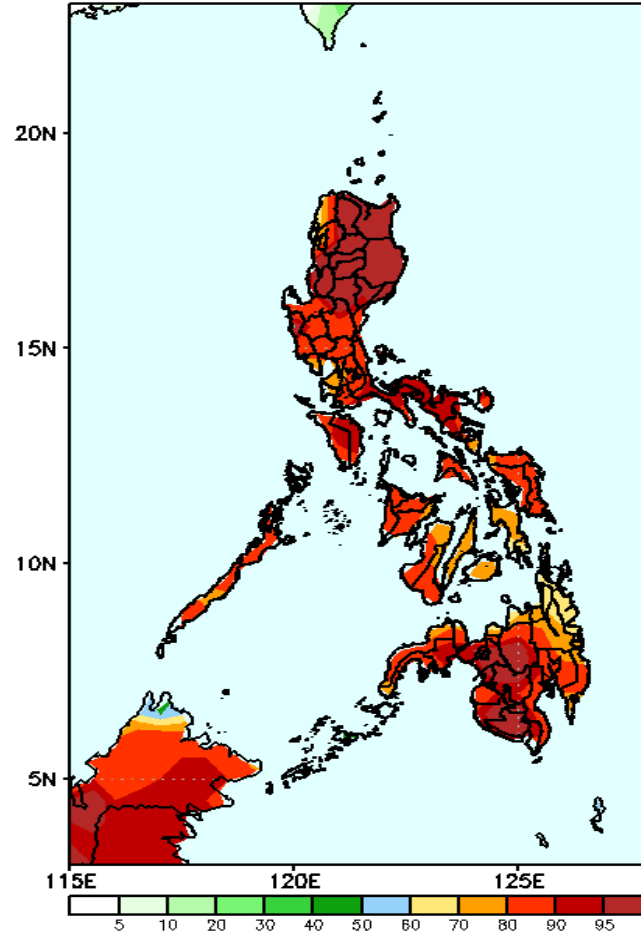
Week 2: Apr 06-12, 2022

GEFS Week-2 Precip Anomaly
Valid: 20220406 – 20220412



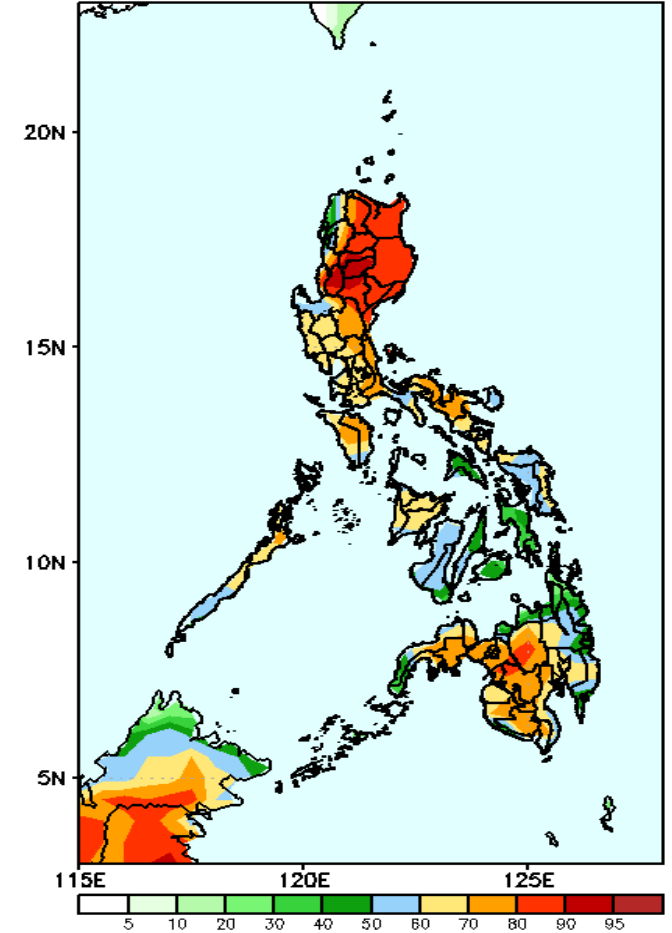
Increase of rainfall of 40-100mm in most parts of the country except in northern Mindanao during the forecast period.

GEFS Week-2 Exceedance Prob. > 25mm
Valid: 20220406 – 20220412



High probability of rainfall to exceed 25mm in most parts of the country during the forecast period.

GEFS Week-2 Exceedance Prob. > 50mm
Valid: 20220406 – 20220412



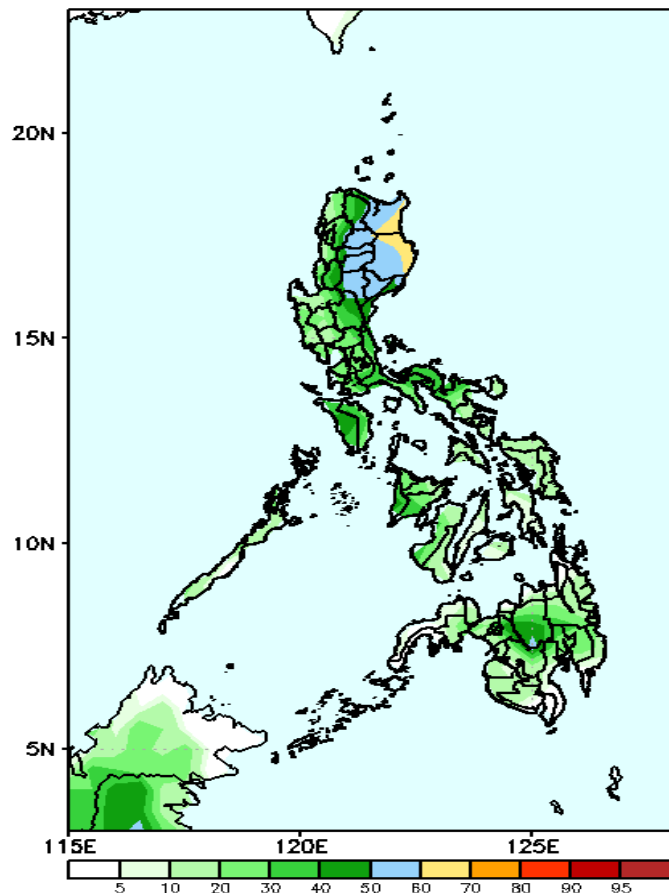
High probability of rainfall to exceed 50mm in most parts of Luzon and Mindanao while 50-70% probability in Visayas during the forecast period



Exceedance Probability > 100/150/200 mm

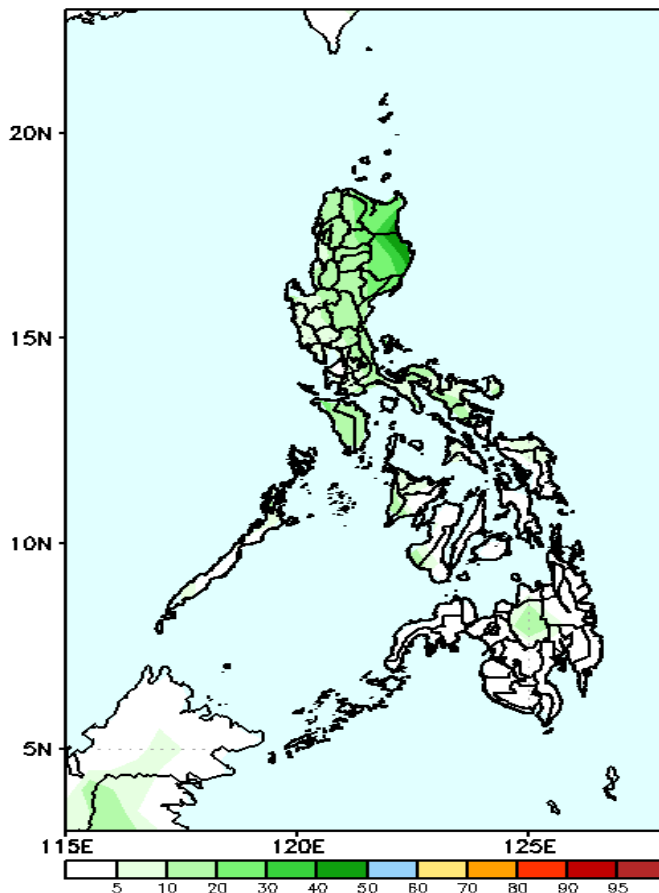
Week 2: Apr 06-12, 2022

GEFS Week-2 Exceedance Prob. > 100mm
Valid: 20220406 – 20220412



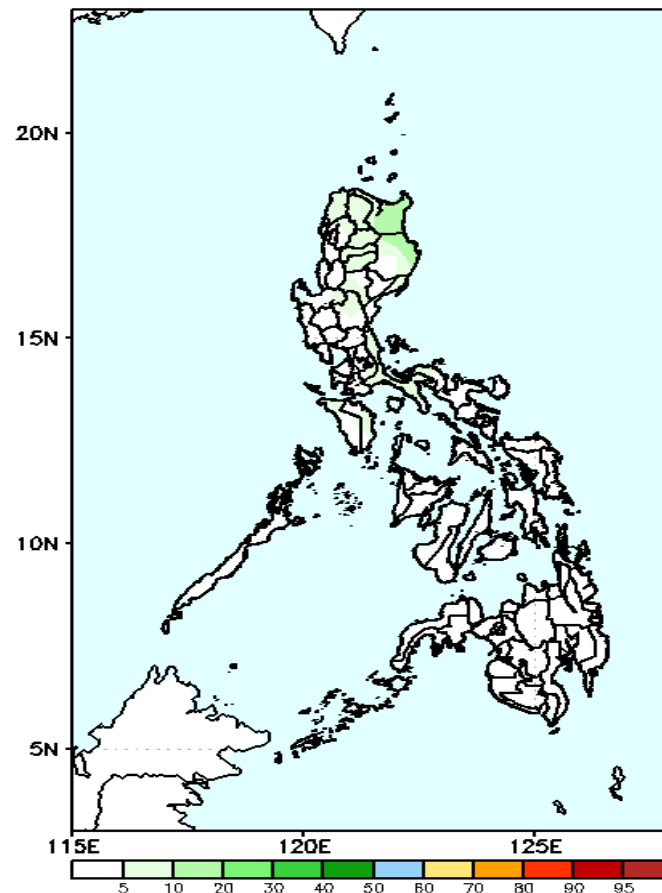
60-70% probability of rainfall to exceed 100mm in Cagayan, Isabela and some areas in Cordillera Region while less likely for the rest of the country during the forecast period.

GEFS Week-2 Exceedance Prob. > 150mm
Valid: 20220406 – 20220412



Low probability of rainfall to exceed 150mm in most parts of the country during the forecast period.

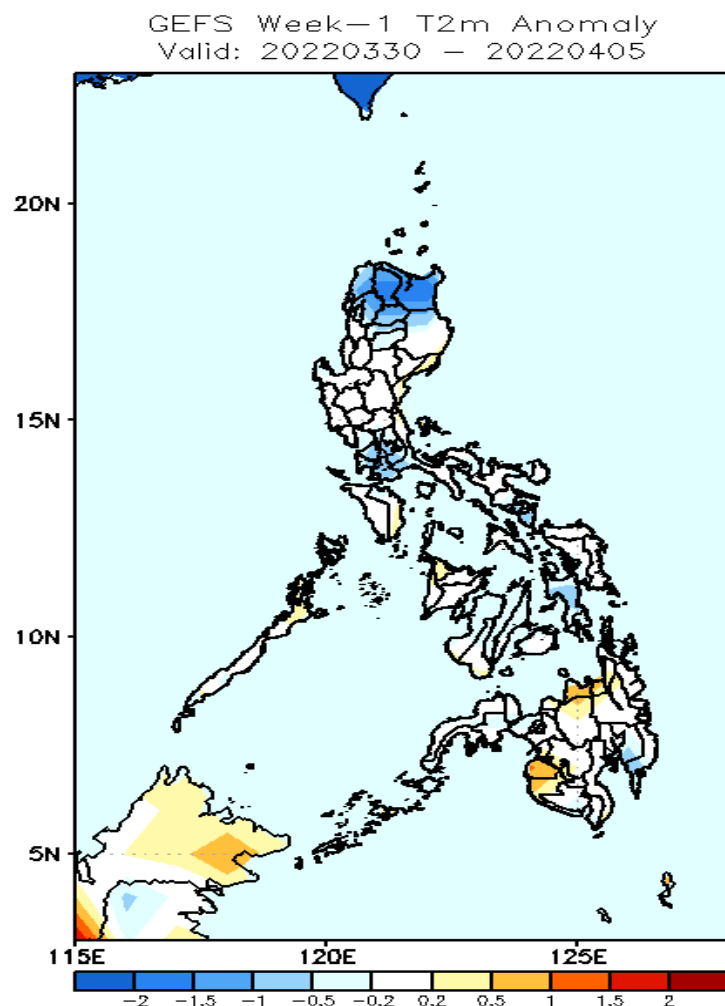
GEFS Week-2 Exceedance Prob. > 200mm
Valid: 20220406 – 20220412



Low probability of rainfall to exceed 200mm in most parts of the country during the forecast period.

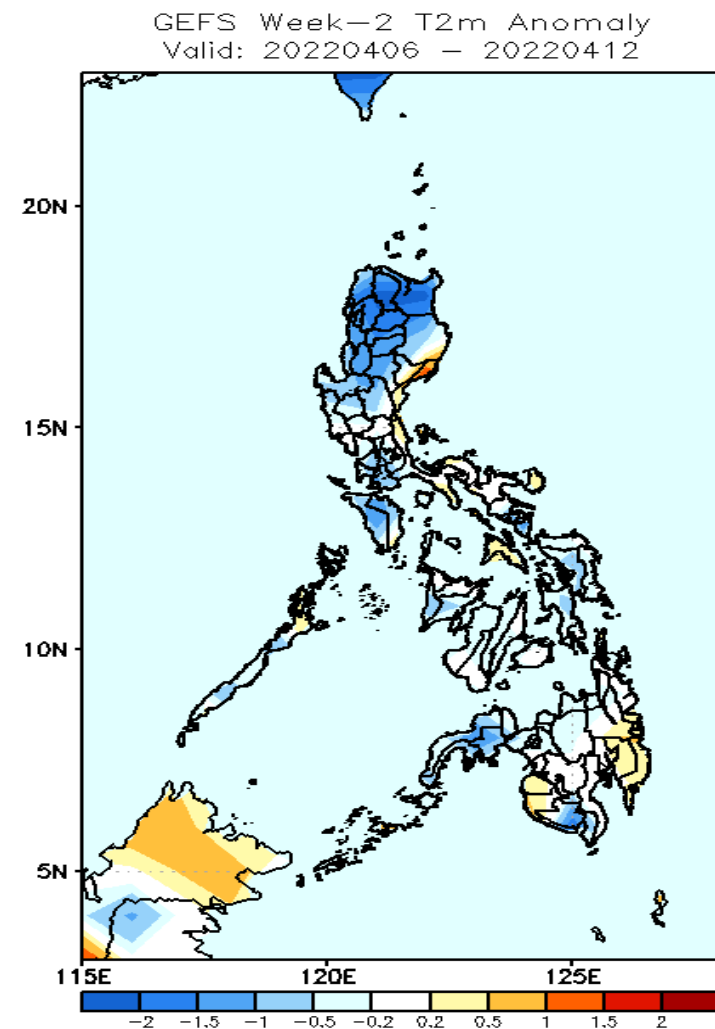


GEFS Week-1 & 2 Forecasts: T2m Anomaly



2m Temperature Week 1: Mar 30- Apr 05, 2022

Cooler than average surface air temperature will likely experience in northern Luzon while average to slightly cooler temperature for the rest of the country (except Misamis Oriental & Maguindanao) during the forecast period



2m Temperature Week 2: Apr 06-12, 2022

Cooler than average surface air temperature will likely experience in most parts of Ilocos & Cordillera Region, Cagayan, Isabela, Mindoro, Zamboanga Peninsula and South Cotabato while average to slightly warmer temperature for the rest of the country during the forecast period