



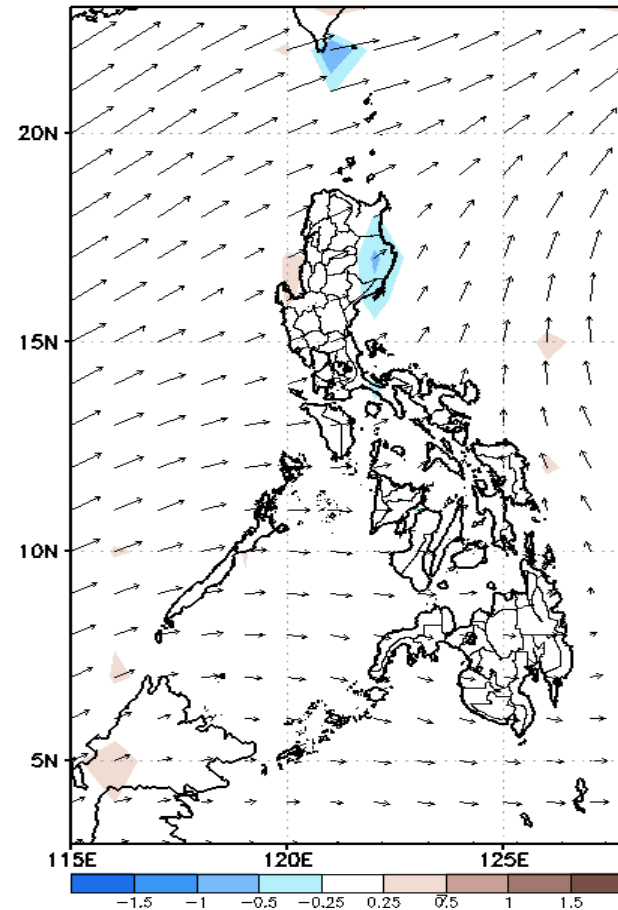
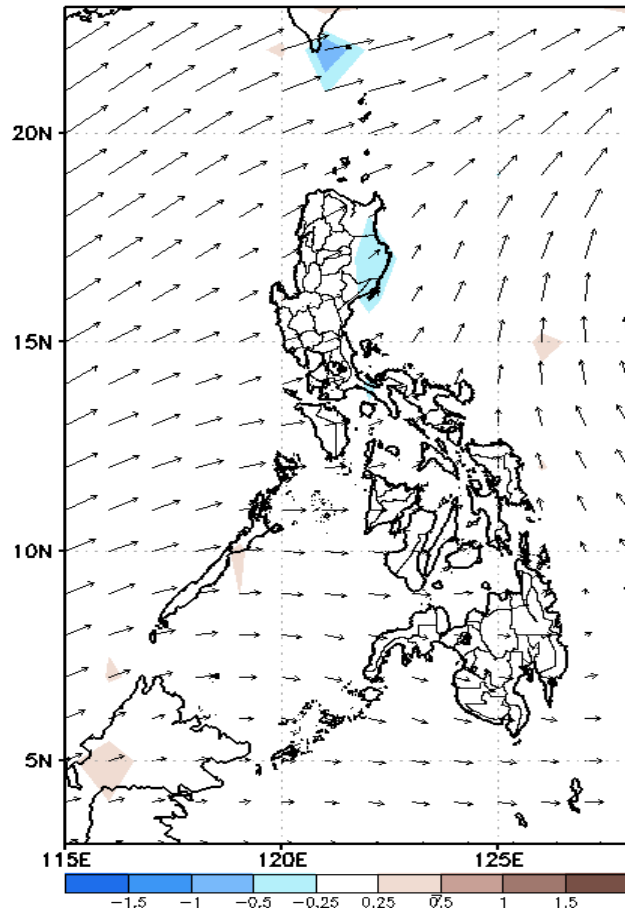
Week 1 & Week 2 Forecast for the Philippines using GEFS Model



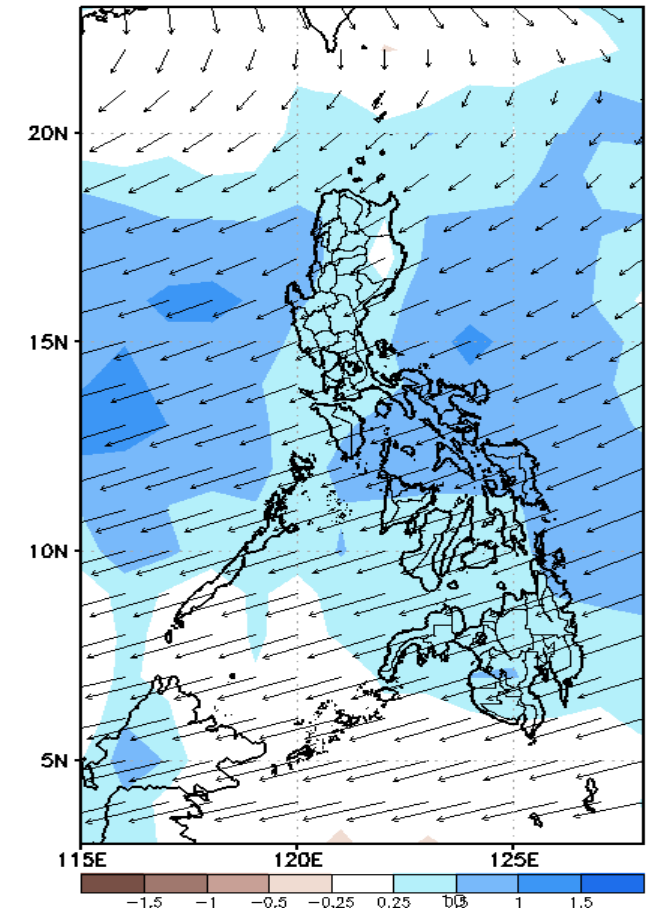
GEFS Week-1 Forecasts: Wind Anomaly Forecast

Week 1: May 30 - Jun 05, 2022

GEFS Week-1 850-hPa Divergence and Wind Anom
Valid: 20220530 - 20220605



GEFS Week-1 200-hPa Divergence and Wind Anomaly
Valid: 20220530 - 20220605

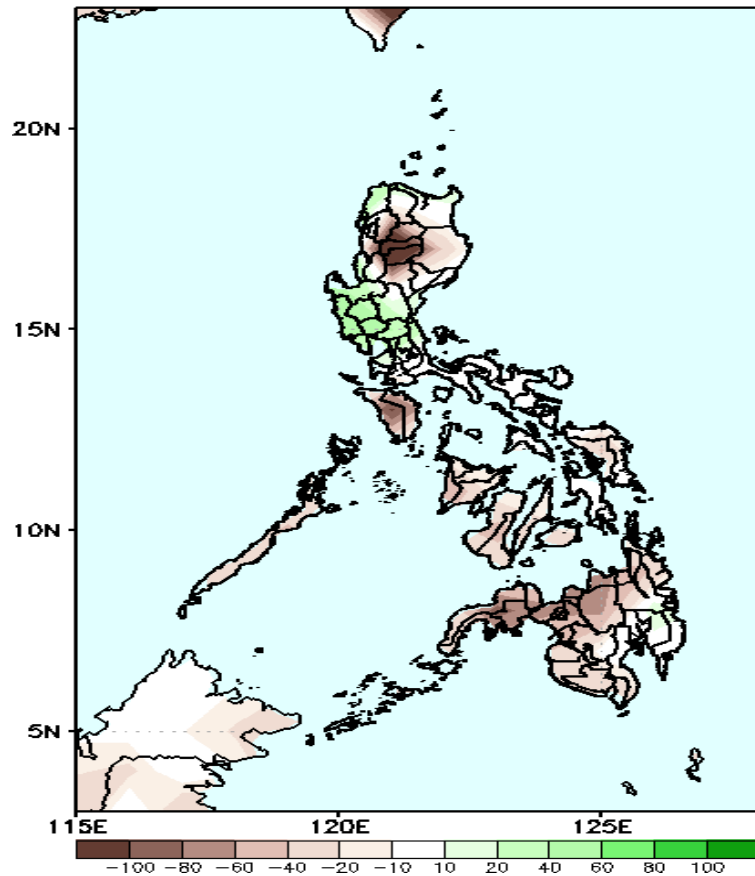


Southwest Monsoon is forecasted to affect most parts of Luzon and the western sections of Visayas and Mindanao while Easterlies affecting the eastern sections of Visayas and Mindanao during the forecast period

Precipitation Anomaly and Exceedance Probability > 25/50 mm

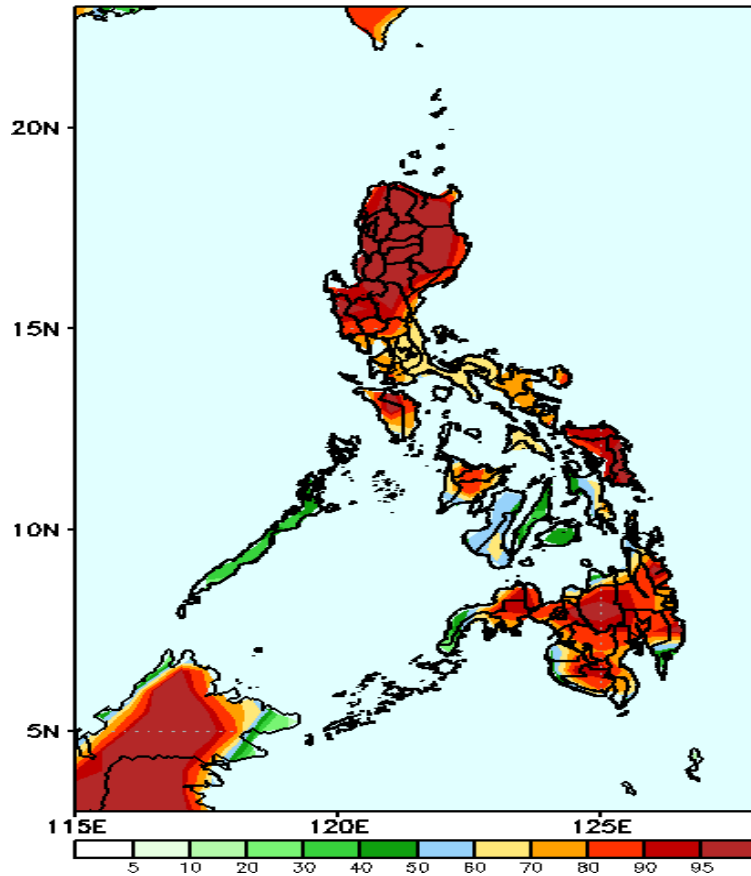
Week 1: May 30 - Jun 05, 2022

GEFS Week-1 Precip Anomaly
Valid: 20220530 - 20220605

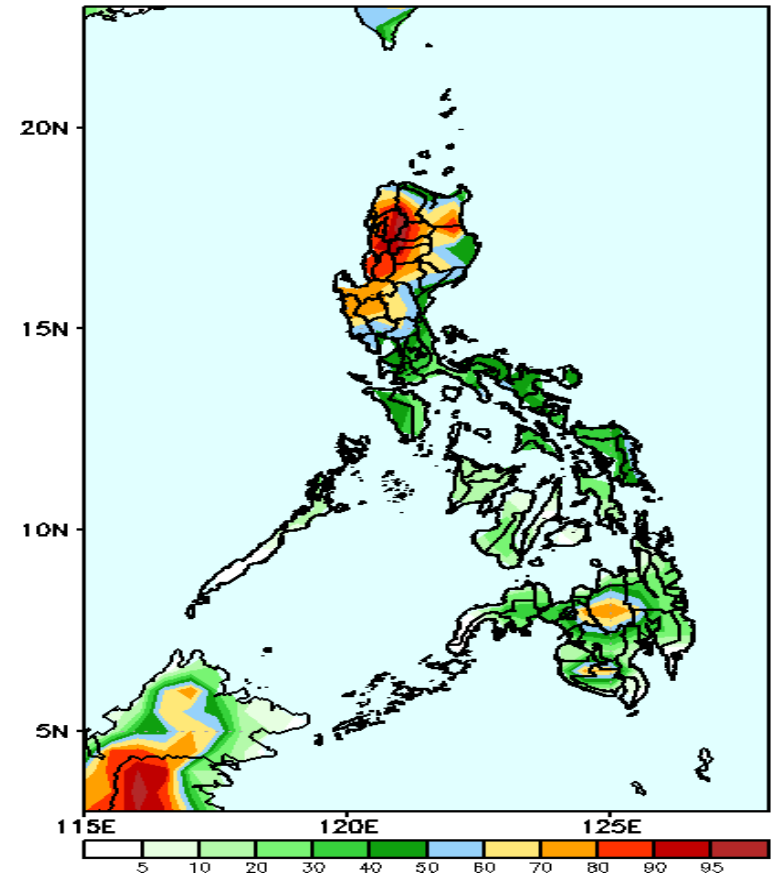


Rainfall deficit of more than 100mm is expected in Cordillera Region, 40-100mm in Mindoro, Palawan and most parts of Visayas and Mindanao while 40-70 increase of rainfall in Pangasinan and Central Luzon during the forecast period.

GEFS Week-1 Exceedance Prob. > 25mm GEFS Week-1 Exceedance Prob. > 50mm
Valid: 20220530 - 20220605



High probability of rainfall to exceed 25mm in most parts of the country during the forecast period.



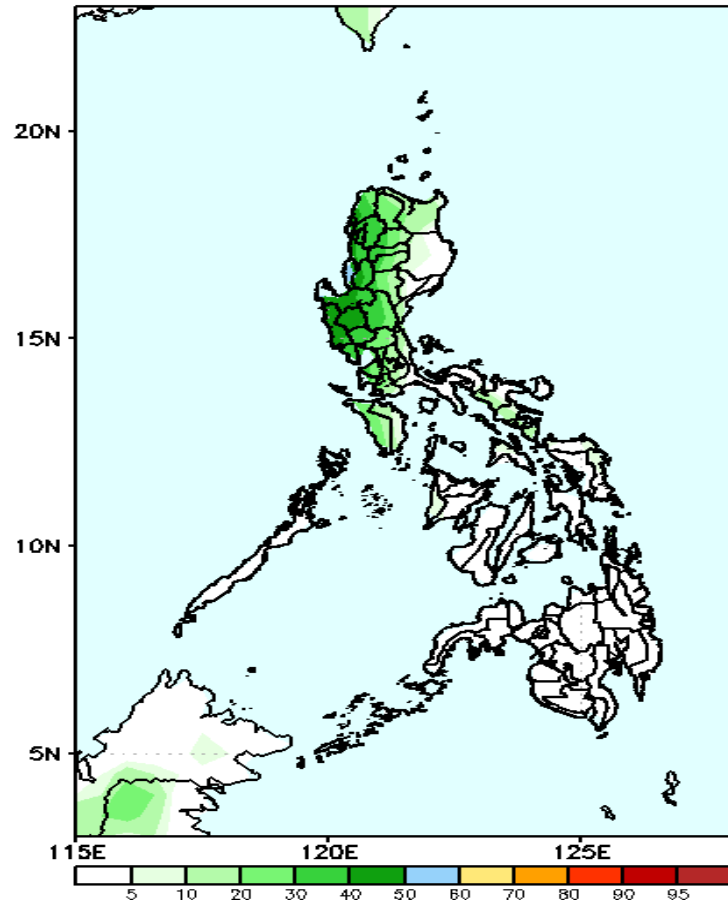
High probability of rainfall to exceed 50mm in most parts of Northern and Central Luzon and Bukidnon while less likely for the rest the country during the forecast period.



Exceedance Probability > 100/150/200 mm

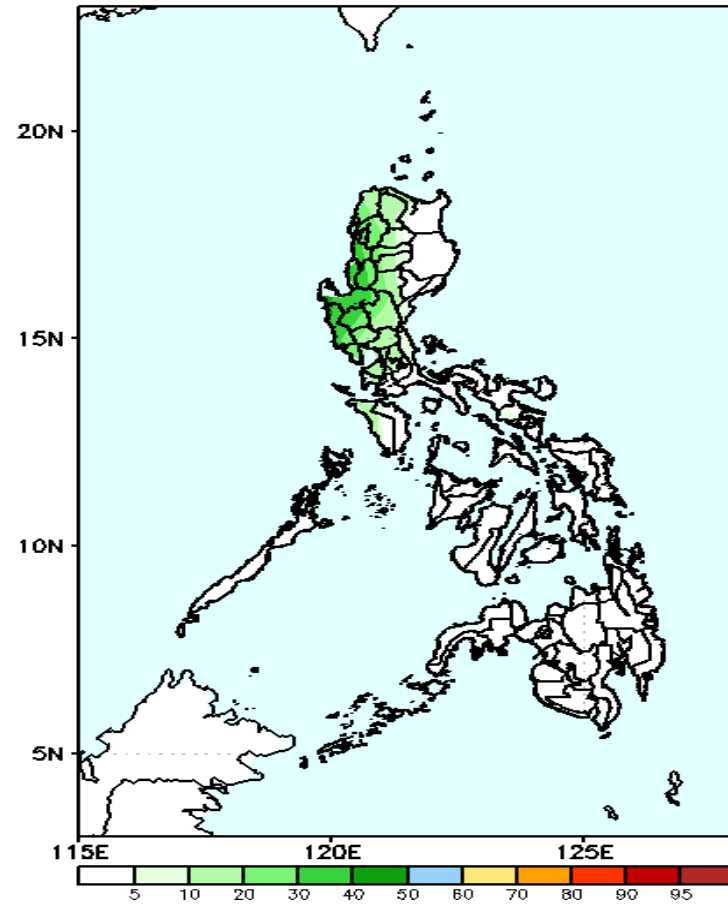
Week 1: May 30 - Jun 05, 2022

GEFS Week-1 Exceedance Prob. > 100mm
Valid: 20220530 - 20220605



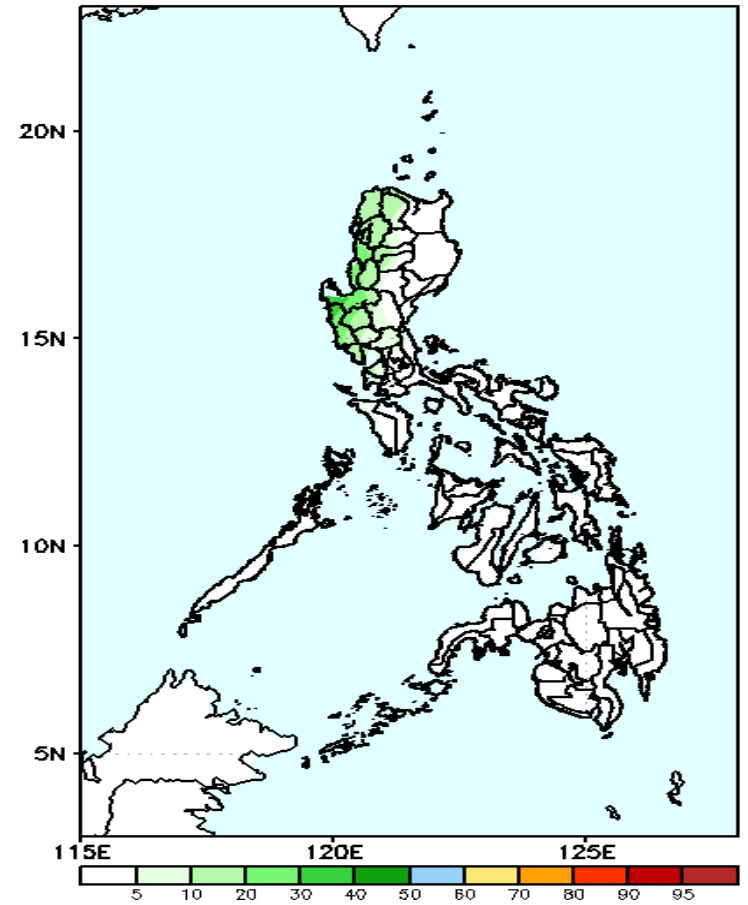
Low probability of rainfall to exceed 100mm in most parts of the country during the forecast period.

GEFS Week-1 Exceedance Prob. > 150mm
Valid: 20220530 - 20220605



Low probability of rainfall to exceed 150mm in most parts of the country during the forecast period.

GEFS Week-1 Exceedance Prob. > 200mm
Valid: 20220530 - 20220605



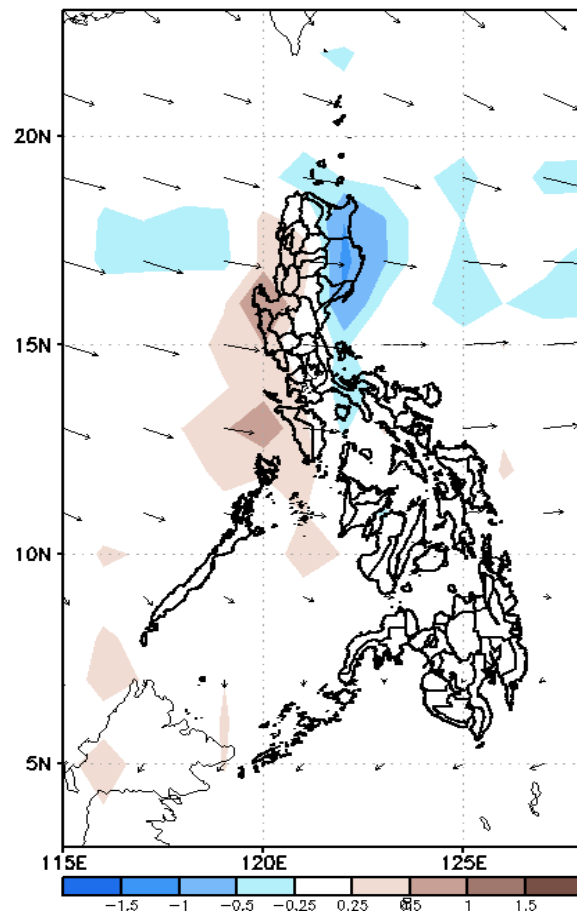
Low probability of rainfall to exceed 200mm in most parts of the country during the forecast period.



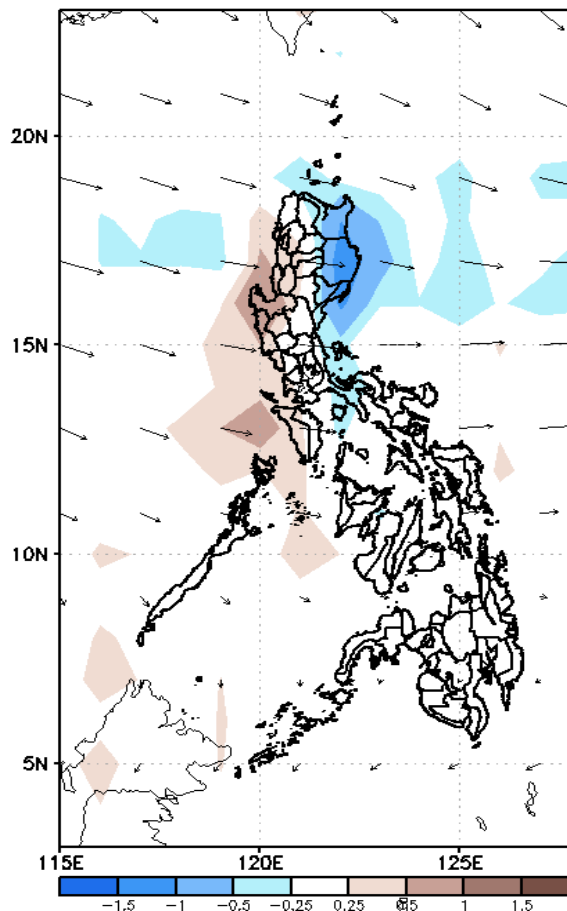
GEFS Week-2 Forecasts: Wind Anomaly Forecast

Week 2: Jun 06-12, 2022

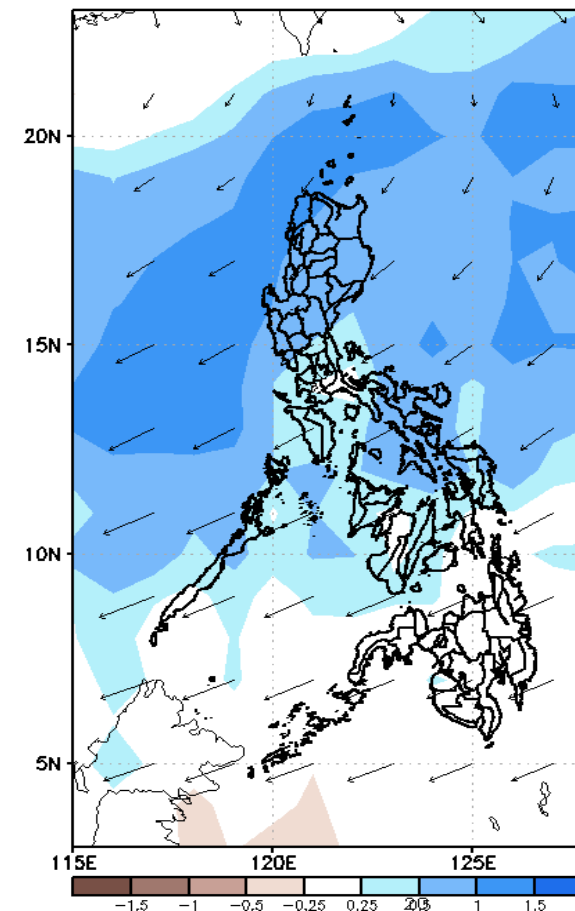
GEFS Week-2 850-hPa Divergence and Wind Anomaly
Valid: 20220606 – 20220612



GEFS Week-2 700-hPa Divergence and Wind Anomaly
Valid: 20220606 – 20220612



GEFS week-2 200-hPa Divergence and Wind Anomaly
Valid: 20220606 – 20220612

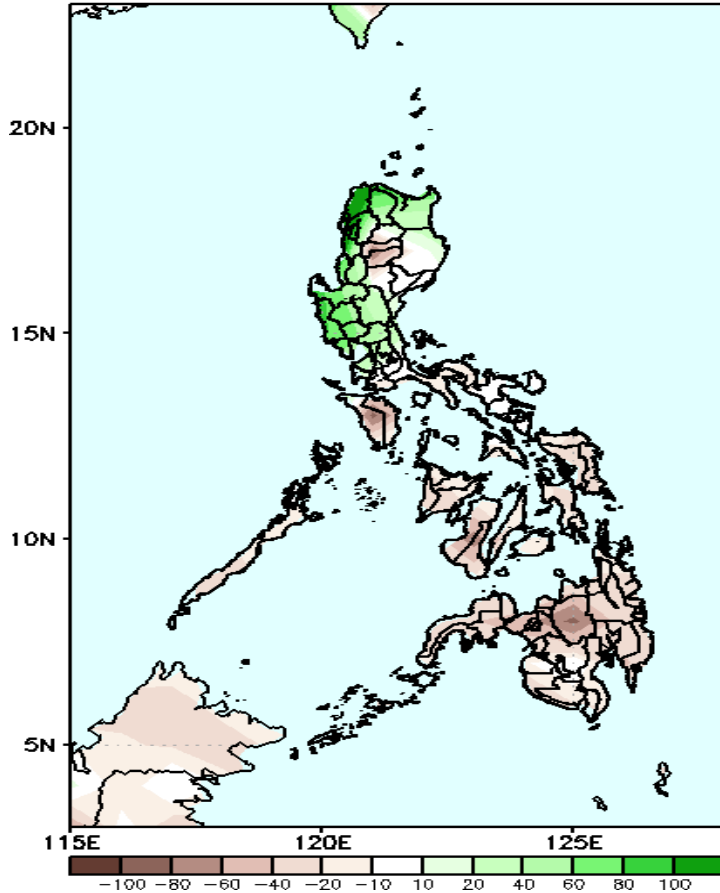


Southwest Monsoon is forecasted to affect most parts of Luzon and Visayas while easterlies affecting Mindanao during the forecast period.

Precipitation Anomaly and Exceedance Probability > 25/50 mm

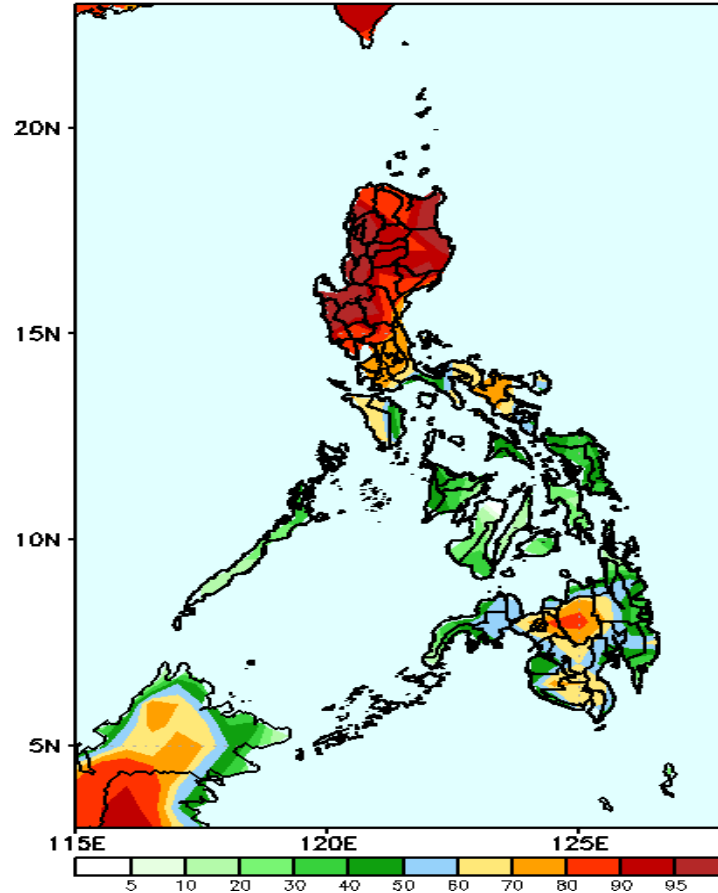
Week 2: Jun 06-12, 2022

GEFS Week-2 Precip Anomaly
Valid: 20220606 – 20220612



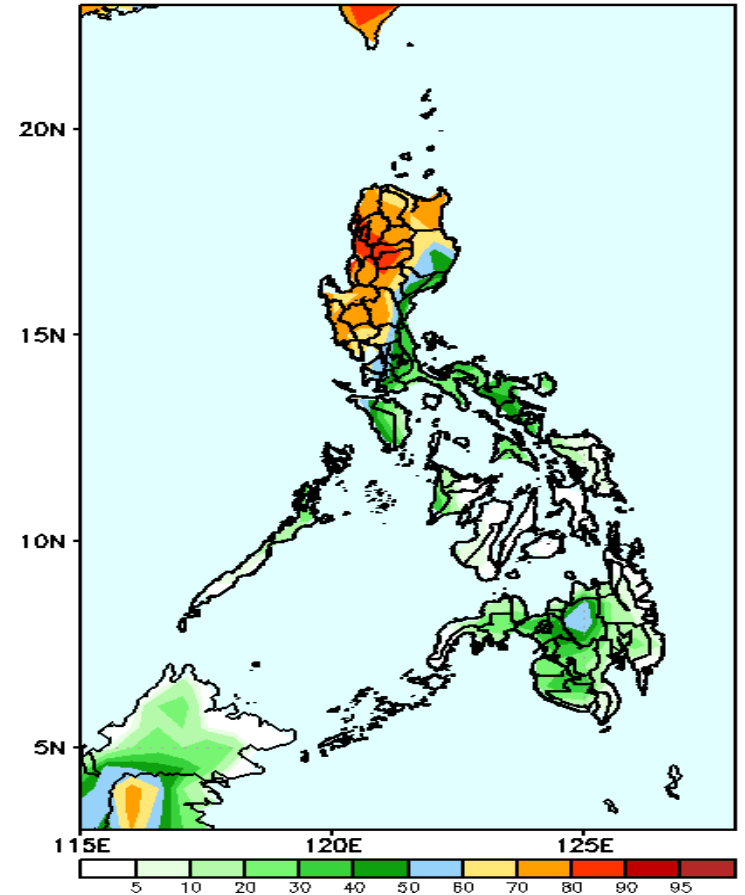
Rainfall deficit of 40-80mm is expected in most parts of the country during the forecast period.

GEFS Week-2 Exceedance Prob. > 25mm
Valid: 20220606 – 20220612



High probability of rainfall to exceed 25mm in most parts of Luzon, Central and Southern Mindanao during the forecast period.

GEFS Week-2 Exceedance Prob. > 50mm
Valid: 20220606 – 20220612



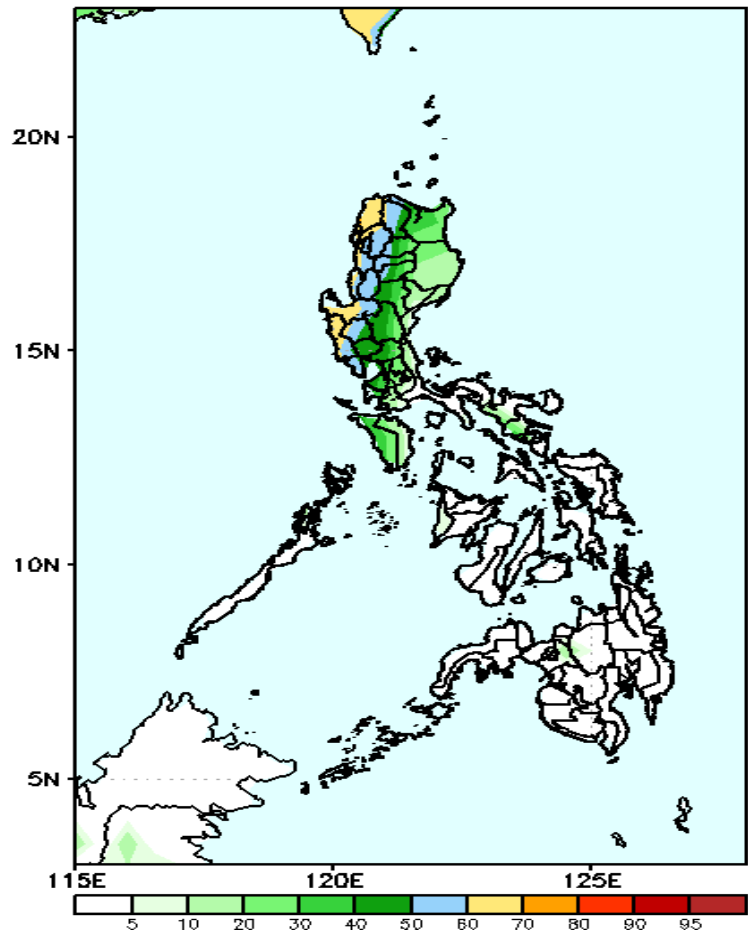
High probability of rainfall to exceed 50mm in most parts of Northern and Central Luzon while less likely for the rest of the country during the forecast period.



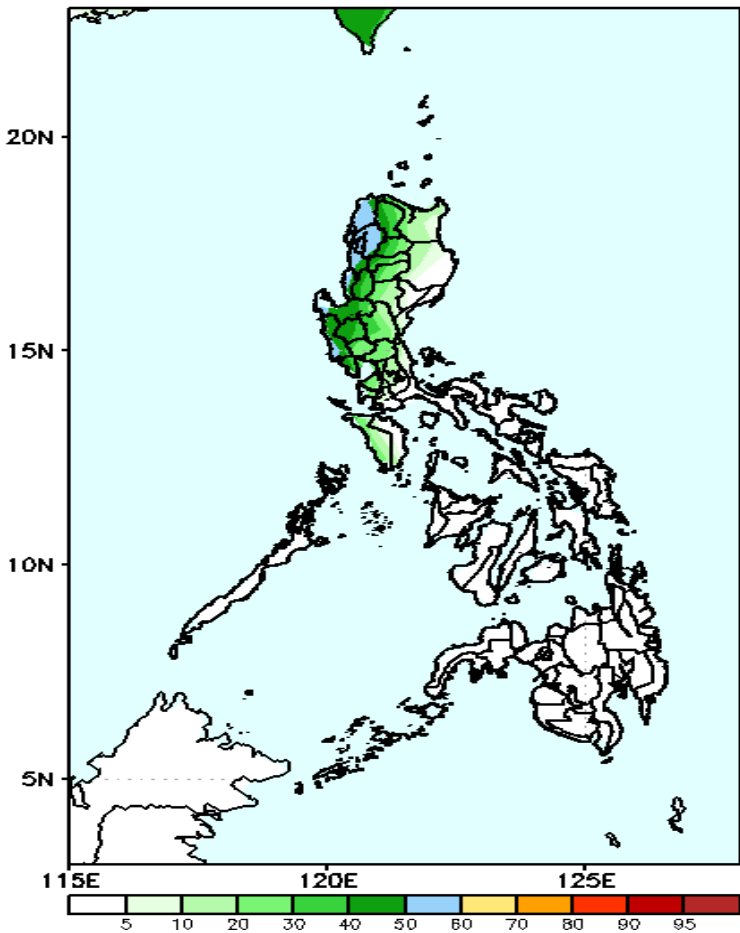
Exceedance Probability > 100/150/200 mm

Week 2: Jun 06-12, 2022

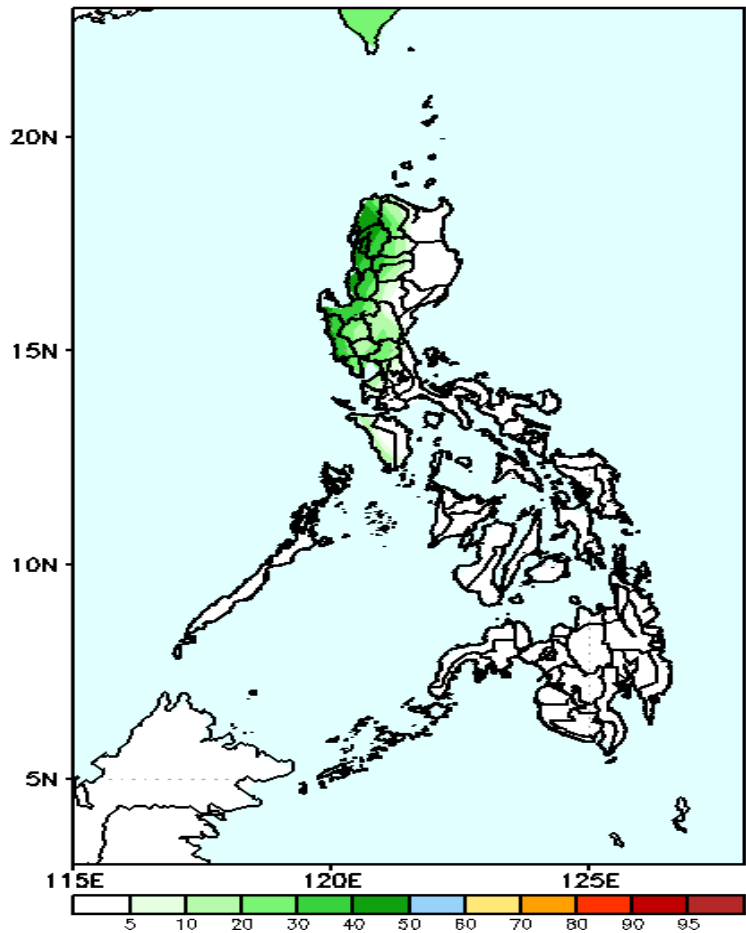
GEFS Week-2 Exceedance Prob. > 100mm GEFS Week-2 Exceedance Prob. > 150mm GEFS Week-2 Exceedance Prob. > 200mm
Valid: 20220606 – 20220612 Valid: 20220606 – 20220612 Valid: 20220606 – 20220612



Low probability of rainfall to exceed 100mm in most parts of the country except Ilocos Region and Zambales during the forecast period.

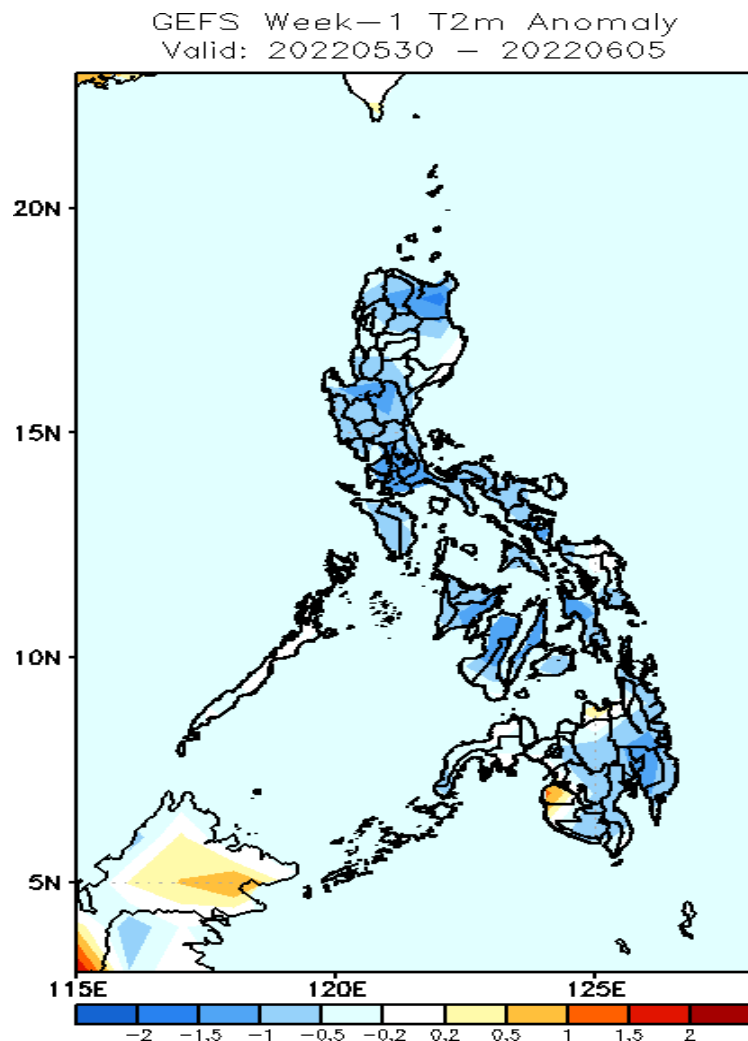


Low probability of rainfall to exceed 150mm in most parts of the country during the forecast period.



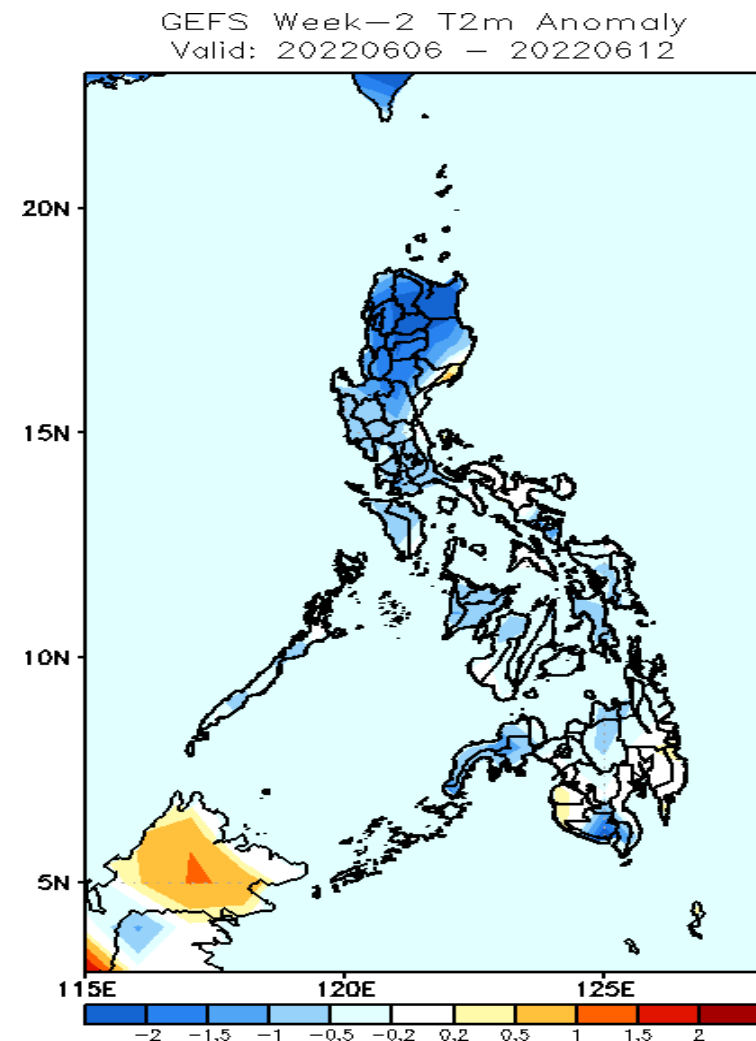
Low probability of rainfall to exceed 200mm in most parts of the country during the forecast period.

GEFS Week-1 & 2 Forecasts: T2m Anomaly



2m Temperature Week 1: May 30 - Jun 05, 2022

Slightly cooler to cooler surface air temperature will likely experience in most parts of the country except in Maguindanao where slightly warmer temperature is expected during the forecast period.



2m Temperature Week 2: Jun 06-12, 2022

Cooler surface air temperature will likely experience in most parts of Luzon and South Cotabato while average to slightly cooler for the rest of the country during the forecast period.