



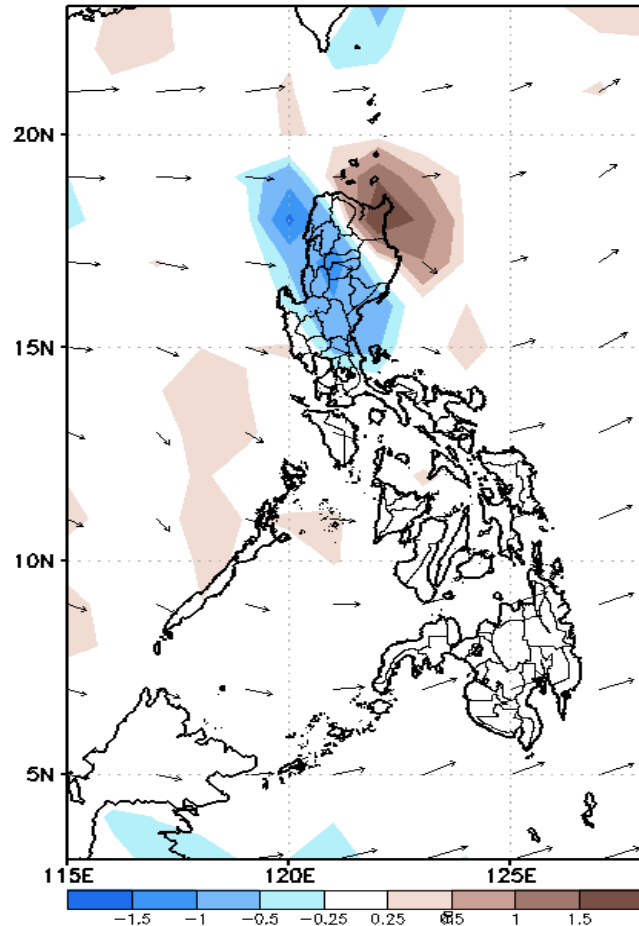
Week 1 & Week 2 Forecast for the Philippines using GEFS Model



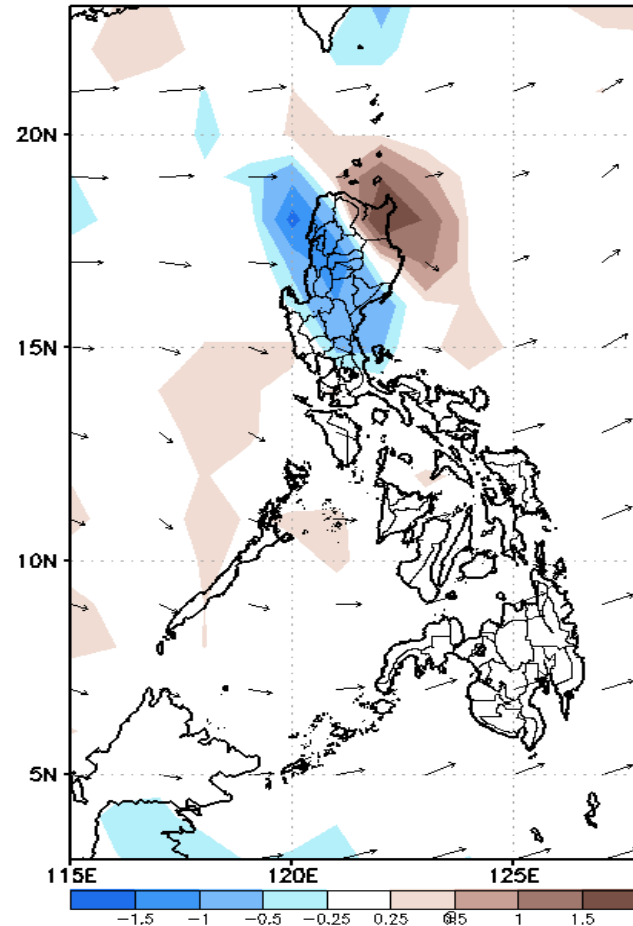
GEFS Week-1 Forecasts: Divergence & Wind Anomaly

Week 1: Nov 30-Dec 06, 2020

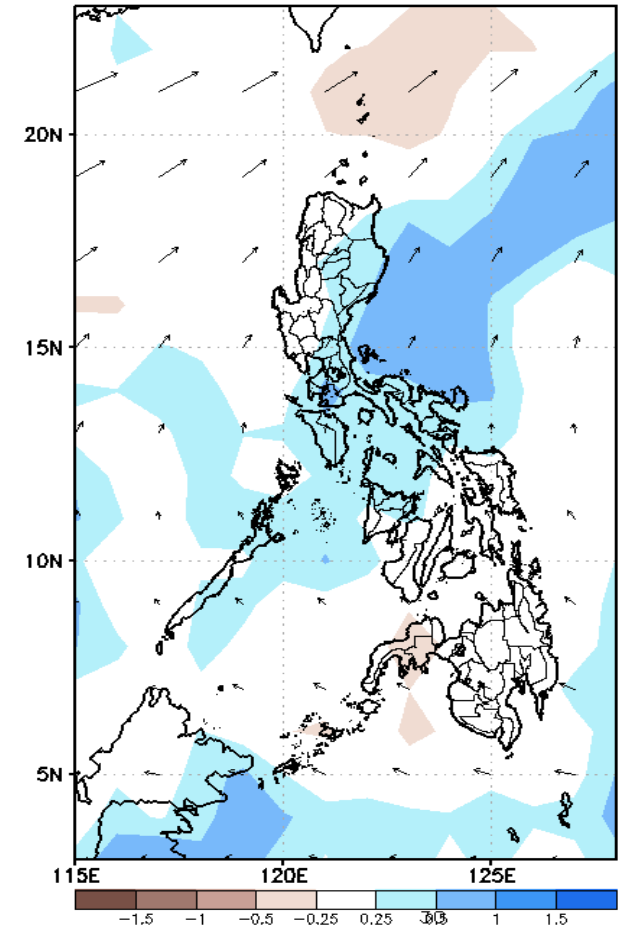
GEFS Week-1 850-hPa Divergence and Wind Anom
Valid: 20201130 - 20201206



GEFS Week-1 700-hPa Divergence and Wind Anom
Valid: 20201130 - 20201206



GEFS Week-1 200-hPa Divergence and Wind Anom
Valid: 20201130 - 20201206

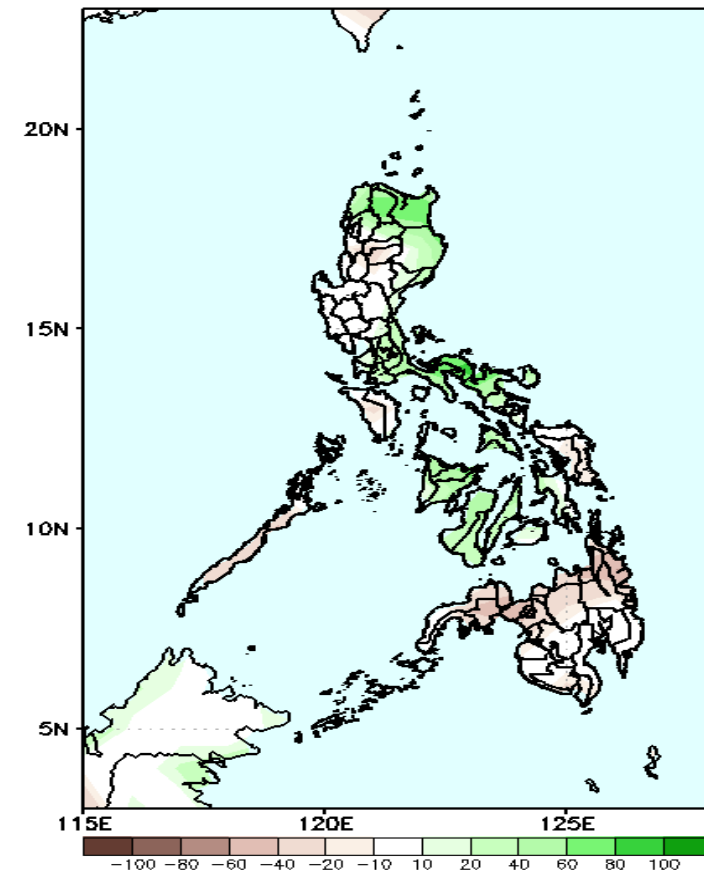


Upper and low level Divergence suggest likelihood of precipitation in most parts Luzon and northern Visayas. Northeast monsoon affecting most parts of Luzon while easterlies affecting most parts of Visayas and Mindanao during the forecast period.

Precipitation Anomaly and Exceedance Probability > 25/50 mm

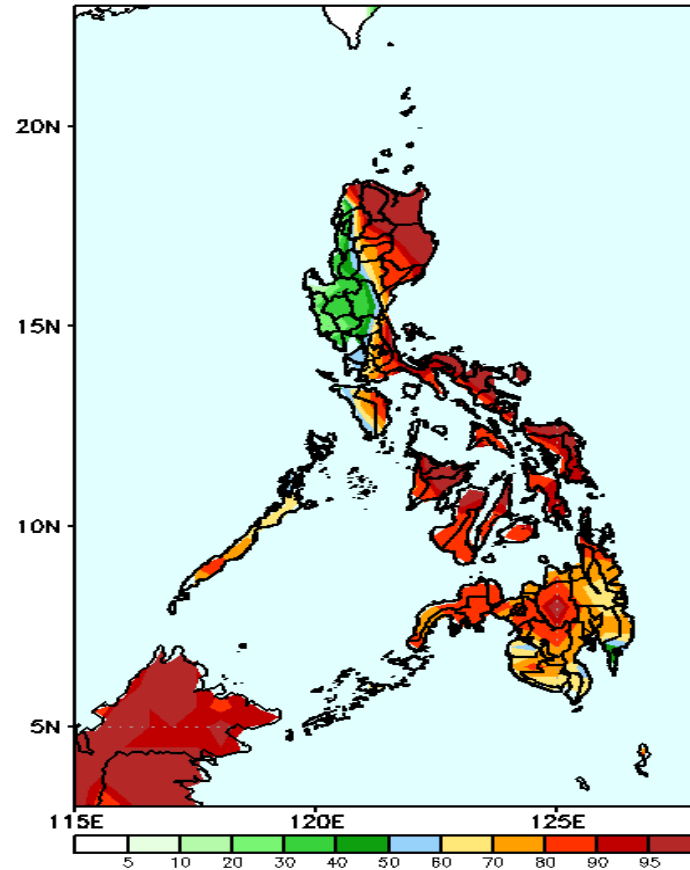
Week 1: Nov 30-Dec 06, 2020

GEFS Week-1 Precip Anomaly
Valid: 20201130 - 20201206



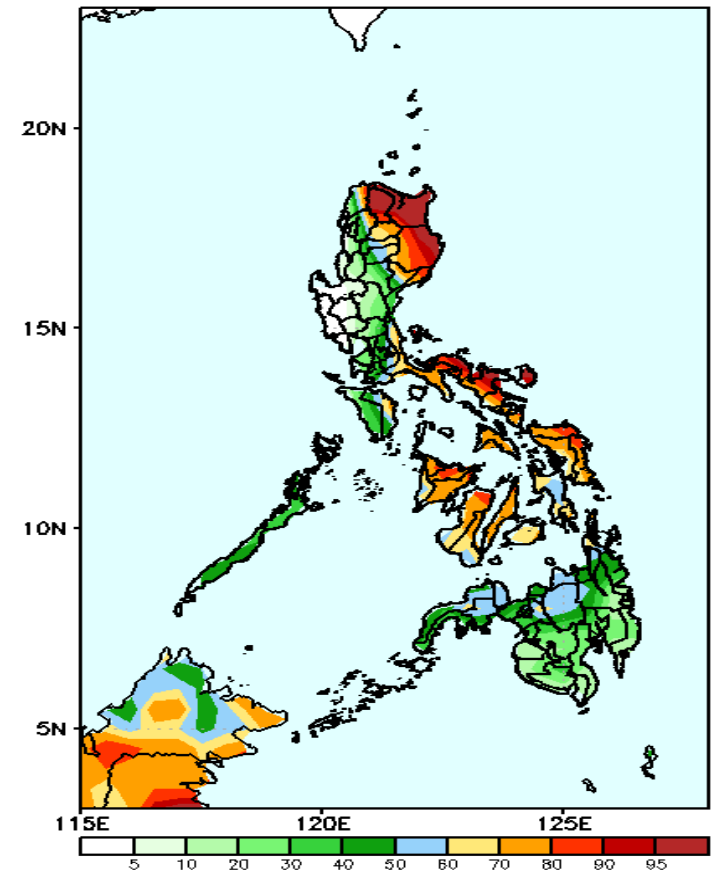
Increase of rainfall of 40-100mm in Ilocos Norte, Apayao, Cagayan, Isabela, Bicol Region and western Visayas is expected while rainfall deficit of up to 60mm in Mindanao during the forecast period.

GEFS Week-1 Exceedance Prob. > 25mm
Valid: 20201130 - 20201206



High probability of rainfall to exceed 25mm in most parts of the country except in Ilocos Region and Central Luzon where there is low probability.

GEFS Week-1 Exceedance Prob. > 50mm
Valid: 20201130 - 20201206



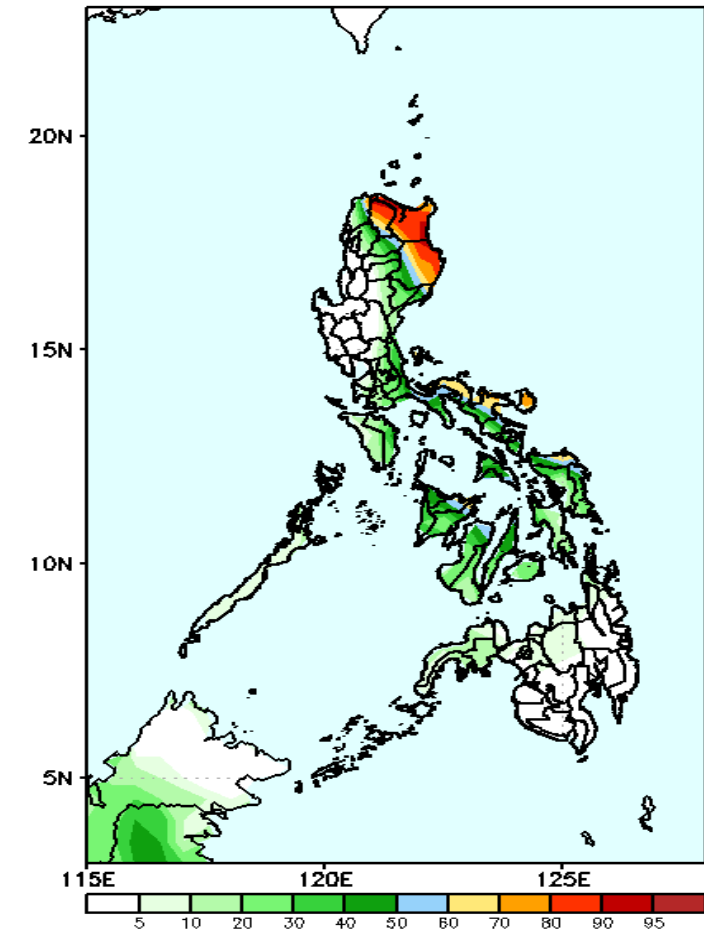
High probability of rainfall to exceed 50mm in Apayao, Cagayan, Isabela, Kalinga, Bicol Region, Quirino and in most parts of Visayas while less likely for the rest of the country during the forecast period.



Exceedance Probability > 100/150/200 mm

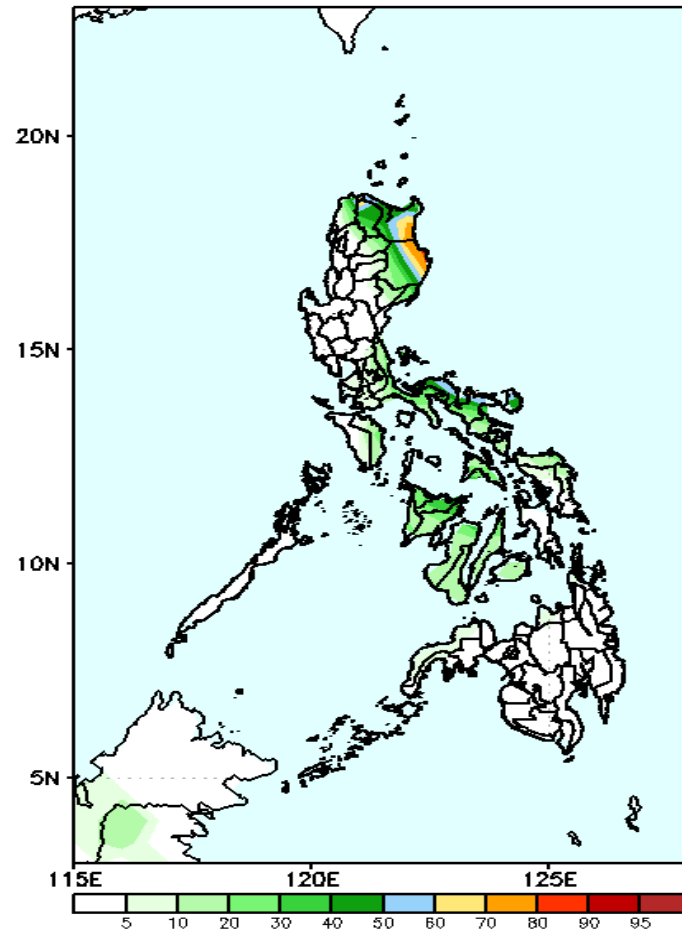
Week 1: Nov 30-Dec 06, 2020

GEFS Week-1 Exceedance Prob. > 100mm
Valid: 20201130 - 20201206



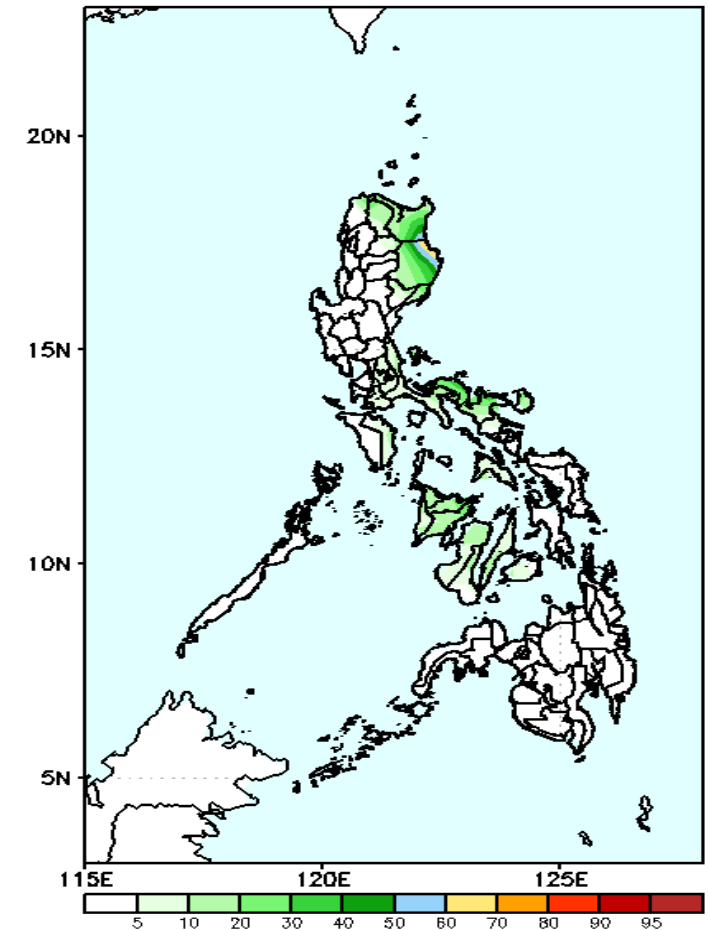
High probability of rainfall to exceed 100mm in Apayao, Cagayan, Isabela, Camarines Sur & Norte while less likely for the rest of the country during the forecast period.

GEFS Week-1 Exceedance Prob. > 150mm
Valid: 20201130 - 20201206



60-90% probability of rainfall to exceed 150mm in Cagayan and Isabela while less likely for the rest of the country during the forecast period.

GEFS Week-1 Exceedance Prob. > 200mm
Valid: 20201130 - 20201206



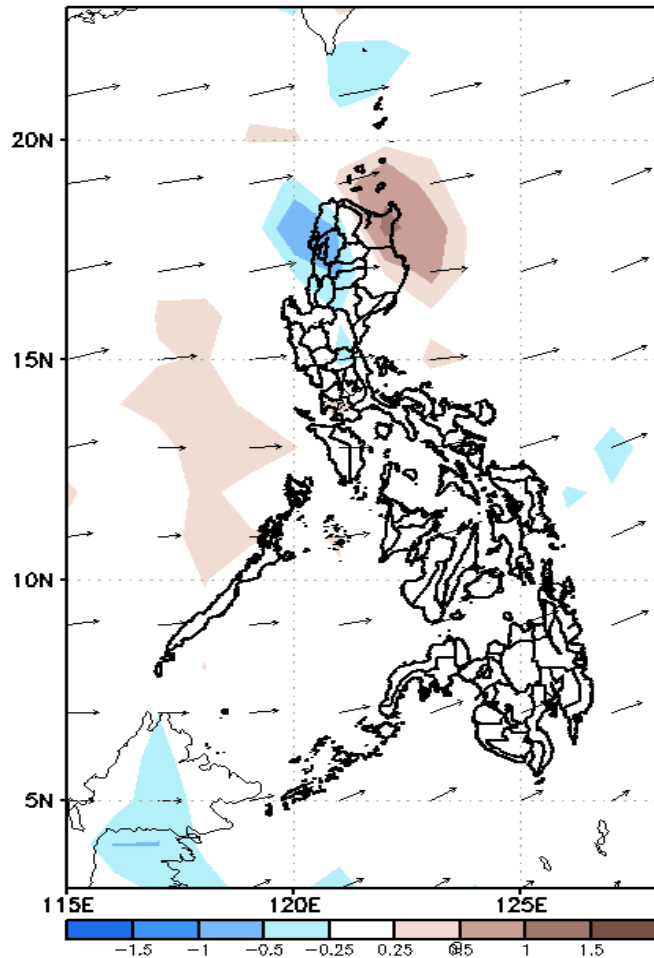
Less probability of rainfall to exceed 200mm in most parts of the country during the forecast period.



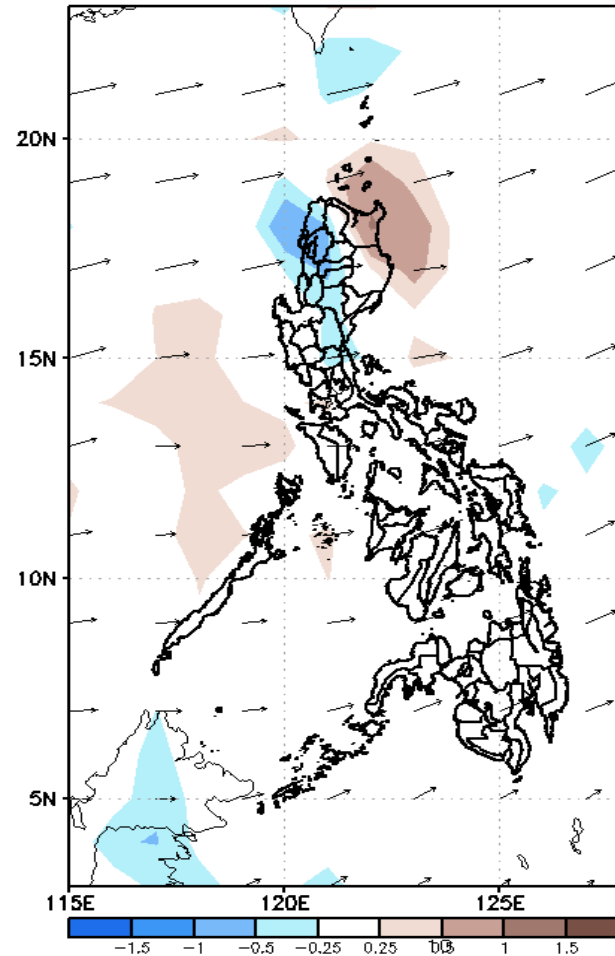
GEFS Week-2 Forecasts: Divergence & Wind Anomaly

Week 2: December 07-13, 2020

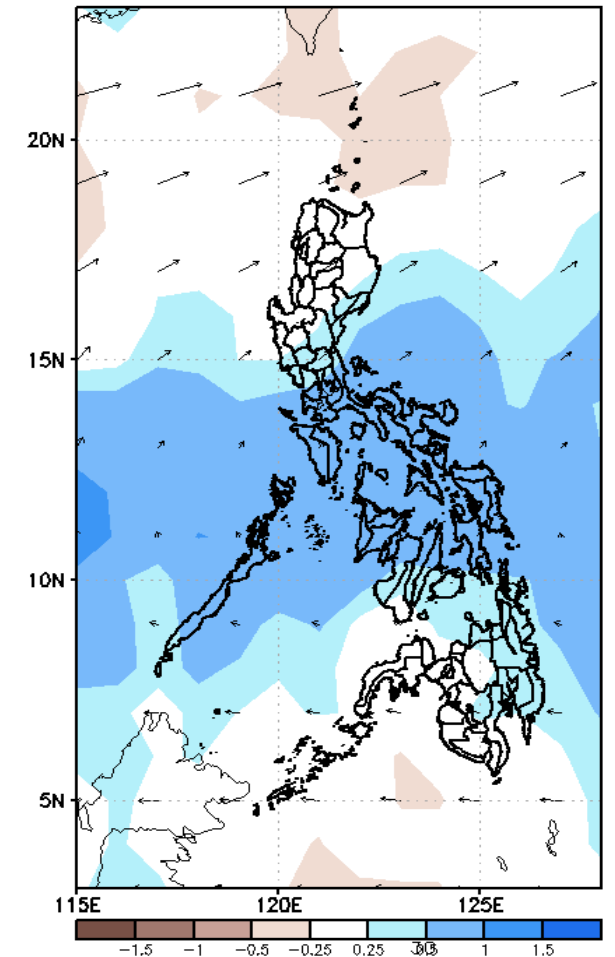
GEFS Week-2 850-hPa Divergence and Wind Anom
Valid: 20201207 - 20201213



GEFS Week-2 700-hPa Divergence and Wind Anom
Valid: 20201207 - 20201213



GEFS week-2 200-hPa Divergence and Wind Anom
Valid: 20201207 - 20201213



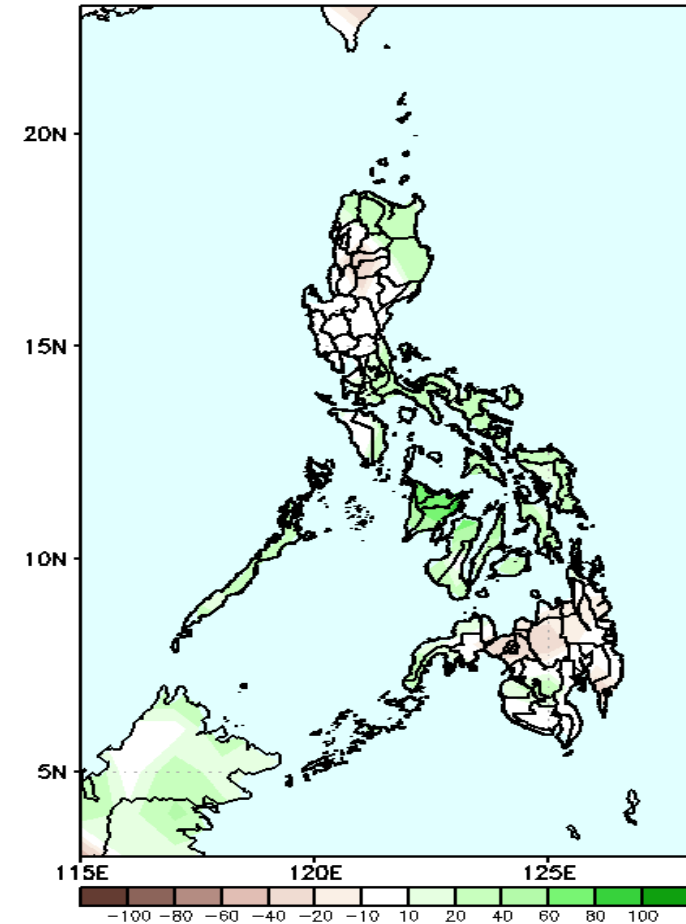
Upper and low level Divergence suggest likelihood of precipitation in Ilocos Region, CALABARZON, Southern Luzon, MIMAROPA and most parts of Visayas. Northeast monsoon affecting northern Luzon while easterlies affecting most parts of the country during the forecast period.



Precipitation Anomaly and Exceedance Probability > 25/50 mm

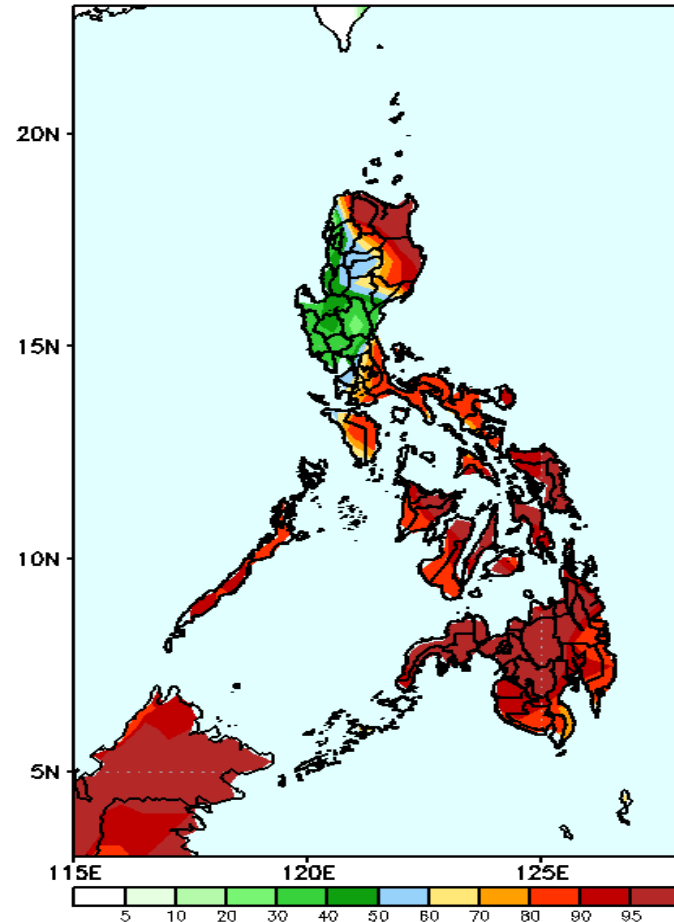
Week 2: December 07-13, 2020

GEFS Week-2 Precip Anomaly
Valid: 20201207 – 20201213



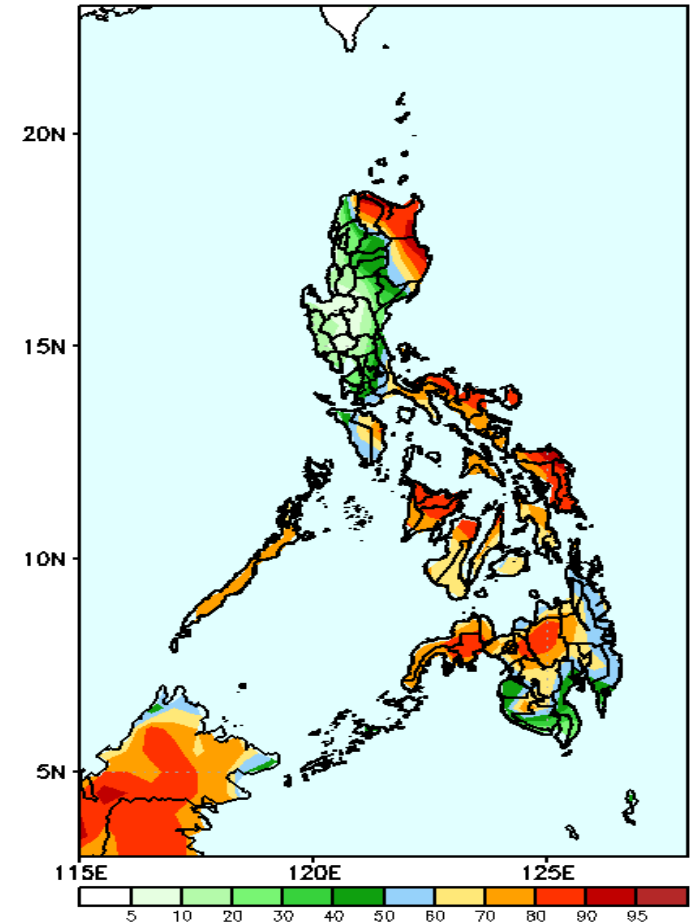
Increase of rainfall of 40-100mm in Ilocos Norte, Apayao, Cagayan, Isabela, Bicol Region and most parts of Visayas is expected while rainfall deficit of up to 40mm in Mindanao during the forecast period.

GEFS Week-2 Exceedance Prob. > 25mm
Valid: 20201207 – 20201213



High probability of rainfall to exceed 25mm in most parts of the country except in Ilocos Region and Central Luzon where there is low probability.

GEFS Week-2 Exceedance Prob. > 50mm
Valid: 20201207 – 20201213

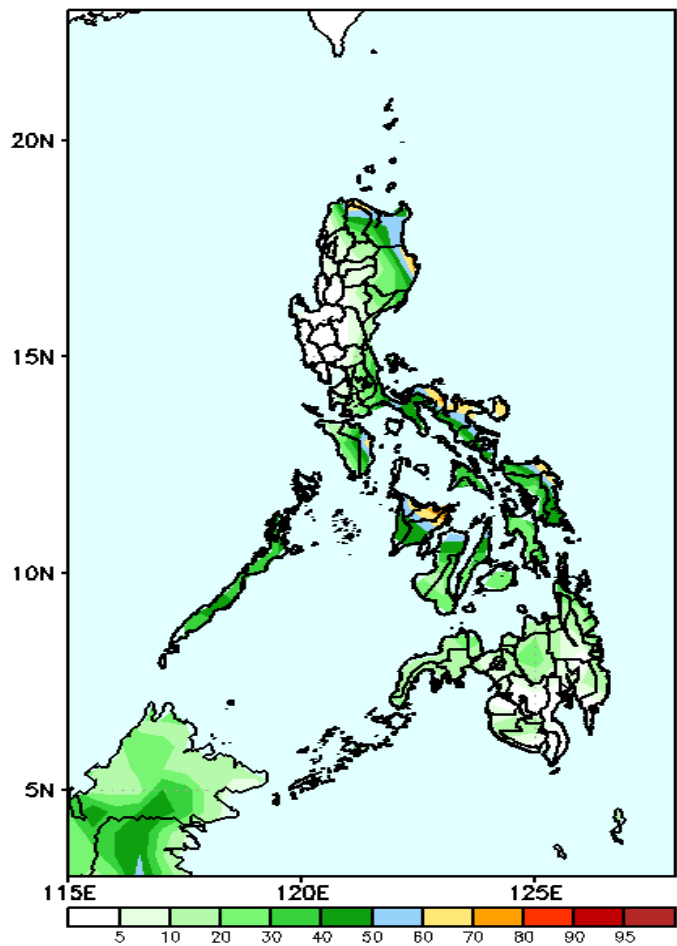


High probability of rainfall to exceed 50mm in Apayao, Cagayan, Isabela, Kalinga, Bicol Region, Quirino and in most parts of Visayas, Northern Mindanao and Zamboanga Peninsula while less likely for the rest of the country during the forecast period.

Exceedance Probability > 100/150/200 mm

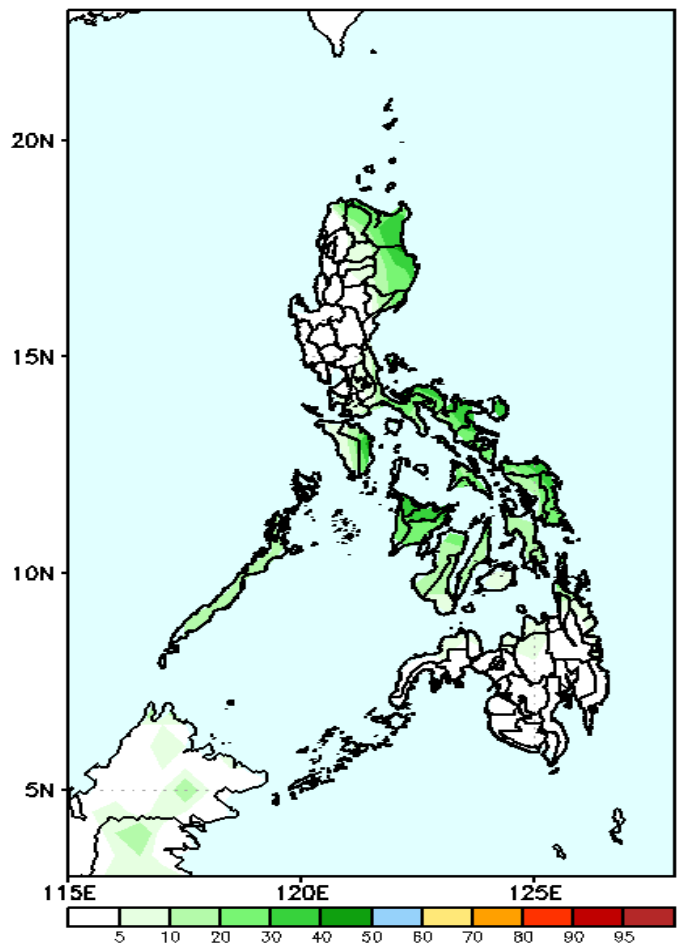
Week 2: December 07-13, 2020

GEFS Week-2 Exceedance Prob. > 100mm
Valid: 20201207 – 20201213



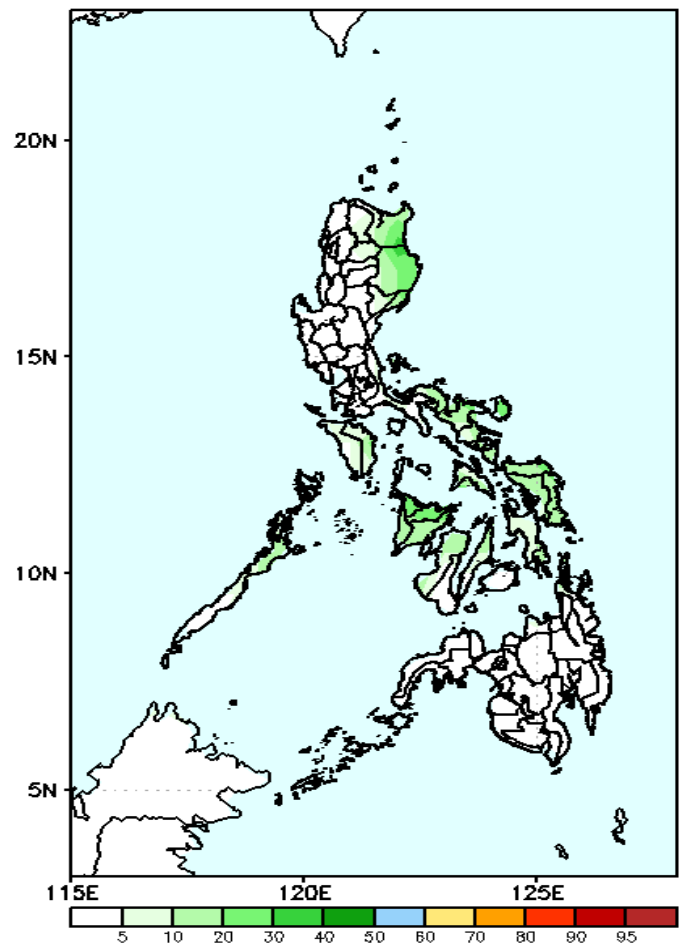
60-80% probability of rainfall to exceed 100mm in Apayao, Cagayan, Isabela, Bicol Region, Aklan and Capiz while less likely for the rest of the country during the forecast period.

GEFS Week-2 Exceedance Prob. > 150mm
Valid: 20201207 – 20201213



Less probability of rainfall to exceed 150mm in most parts of the country during the forecast period.

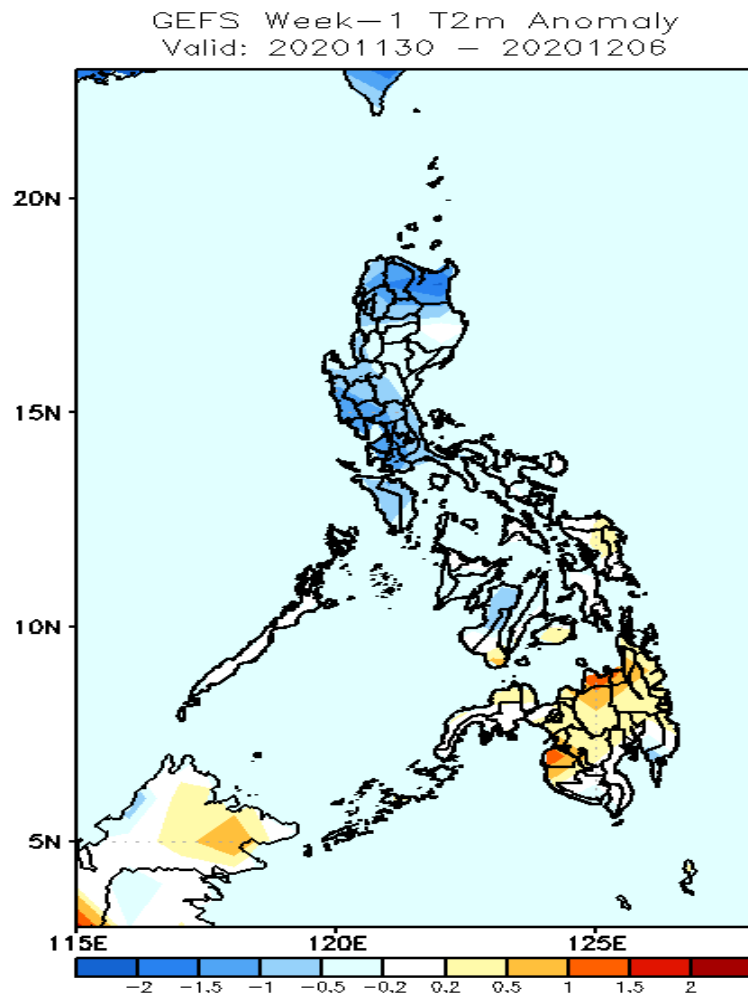
GEFS Week-2 Exceedance Prob. > 200mm
Valid: 20201207 – 20201213



Less probability of rainfall to exceed 200mm in most parts of the country during the forecast period.

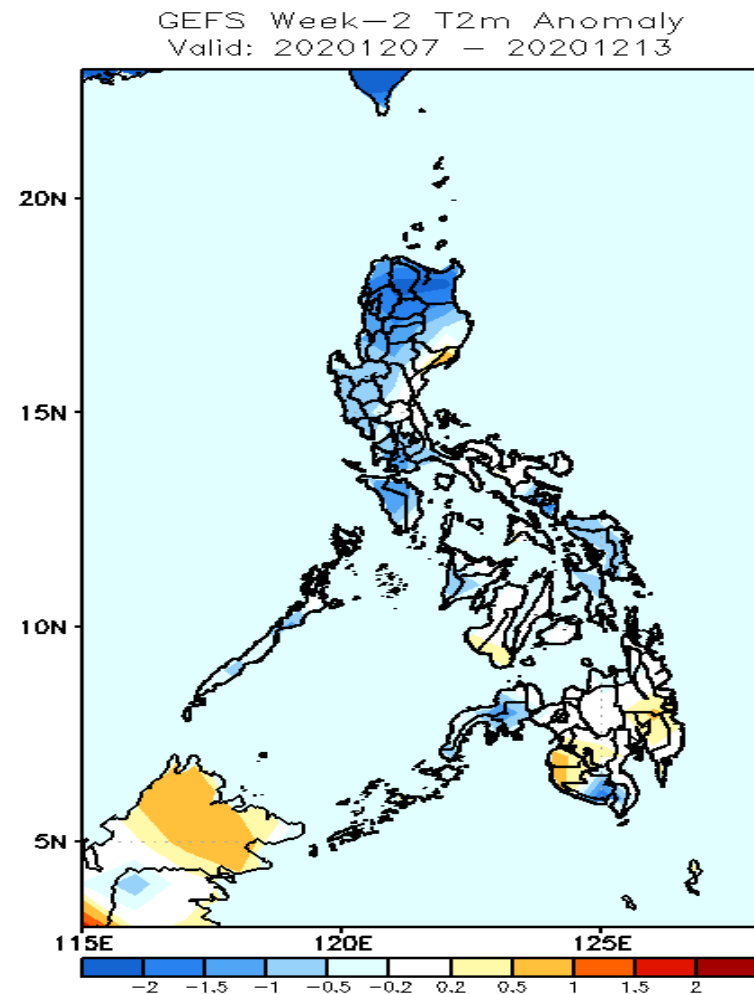


GEFS Week-1 & 2 Forecasts: T2m Anomaly



2m Temperature Week 1: Nov 30-Dec 06, 2020

Slightly cooler to cooler than average surface air temperature is expected in most parts of Luzon and Negros Occidental while the Samar provinces and most parts of Mindanao will likely have average to slightly warmer temperature.



2m Temperature Week 2: December 07-13, 2020

Slightly cooler to cooler than average surface air temperature is expected in most parts of Luzon and Visayas, Sarangani and Zamboanga Peninsula while Aurora, Negros Island and the rest of Mindanao will likely have average to slightly warmer temperature.