



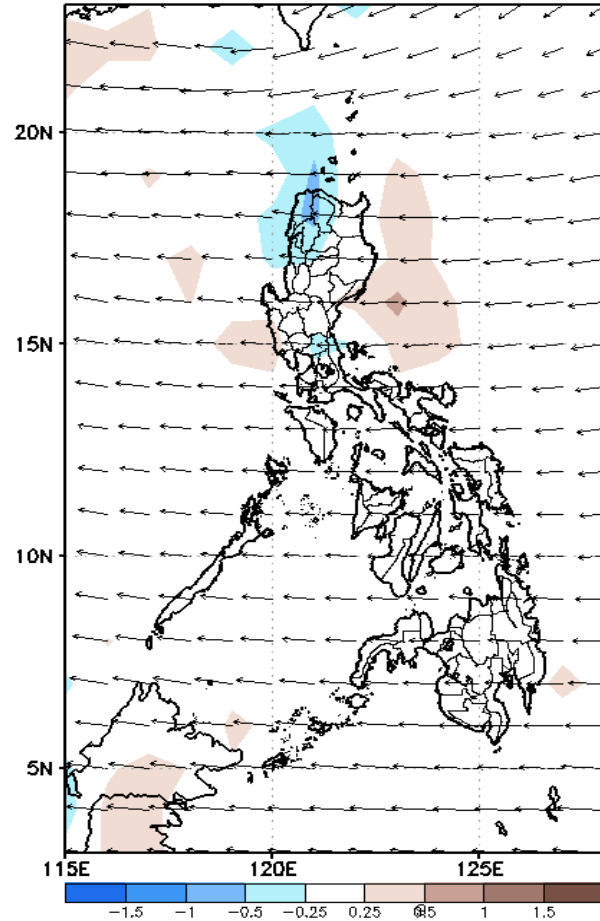
# Week 1 & Week 2 Forecast for the Philippines using GEFS Model



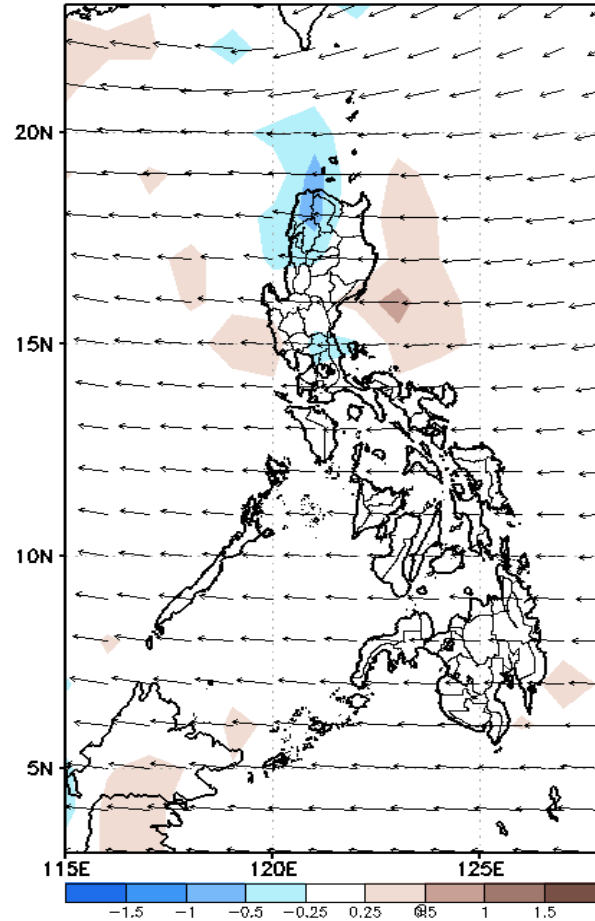
# GEFS Week-1 Forecasts: Wind Anomaly Forecast

Week 1: Sep 30- Oct 06, 2022

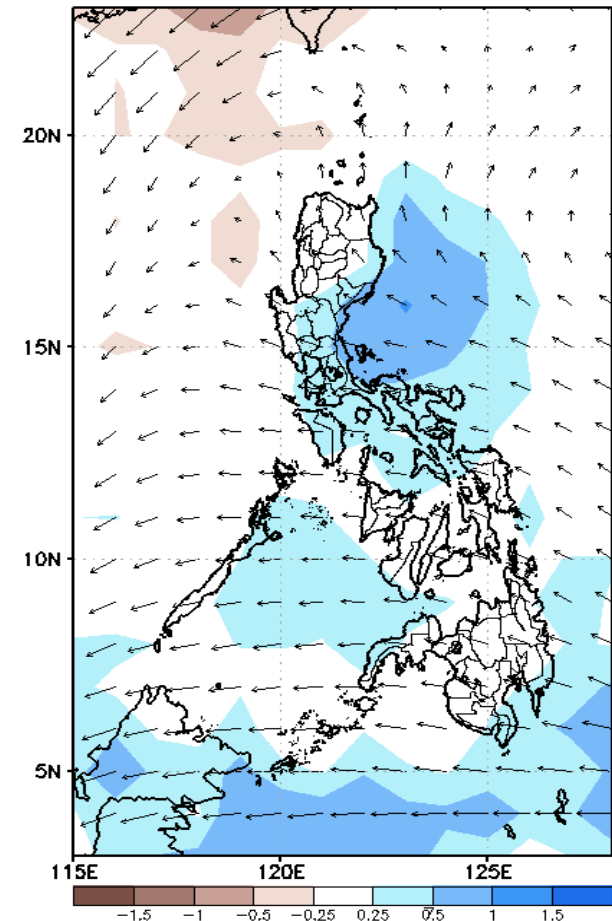
GEFS Week-1 850-hPa Divergence and Wind Anom  
Valid: 20220930 - 20221006



GEFS Week-1 700-hPa Divergence and Wind Anom  
Valid: 20220930 - 20221006



GEFS Week-1 200-hPa Divergence and Wind Anom  
Valid: 20220930 - 20221006

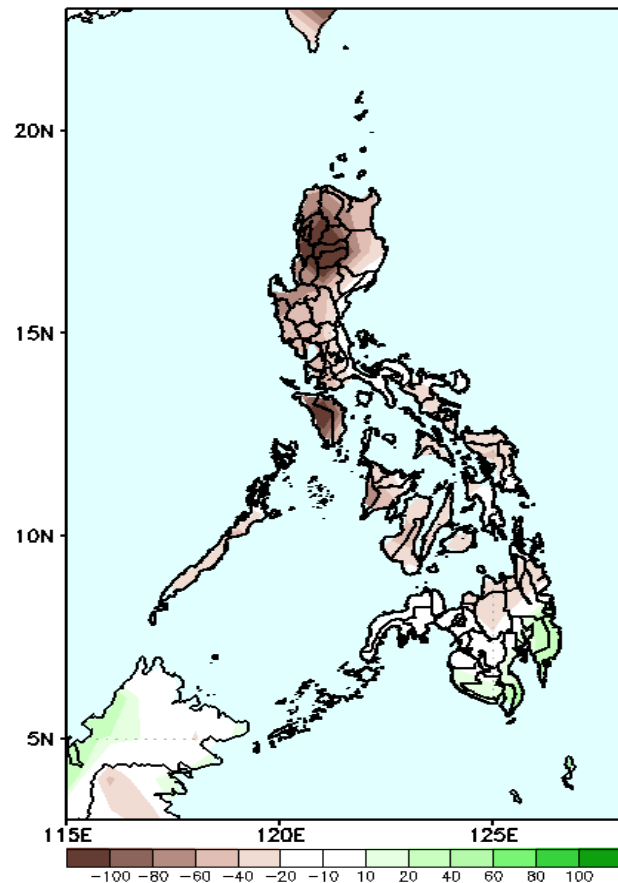


Easterlies affecting most parts of the country during the forecast period.

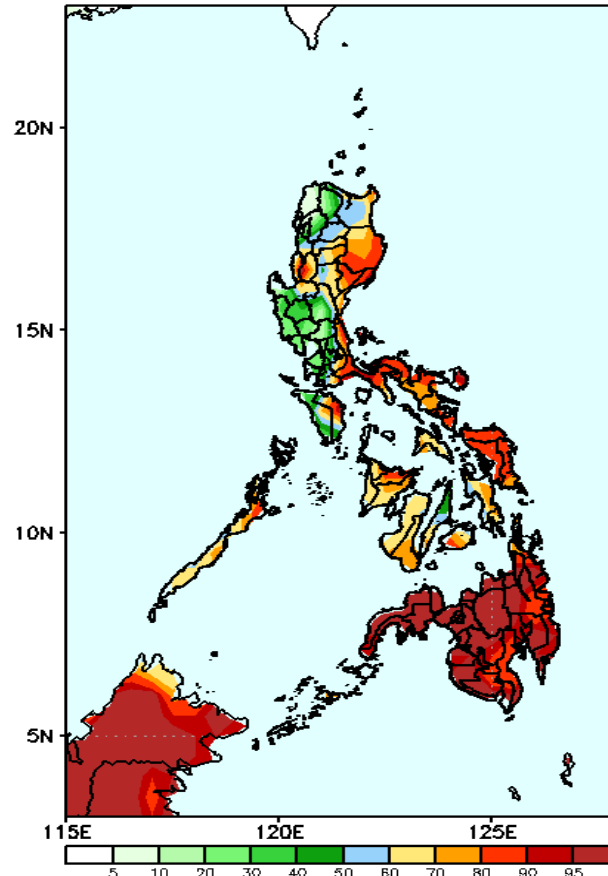
# Precipitation Anomaly and Exceedance Probability > 25/50 mm

Week 1: Sep 30- Oct 06, 2022

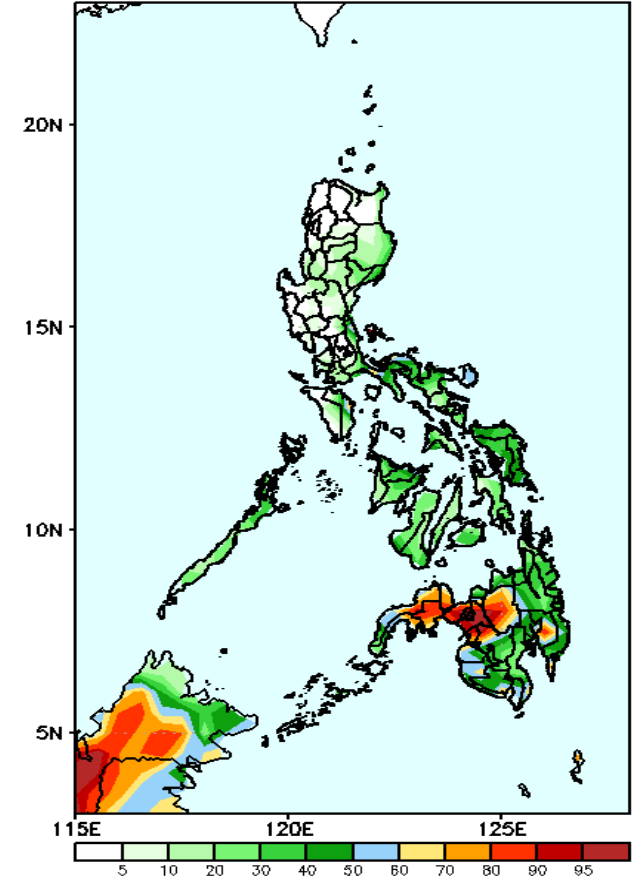
GEFS Week-1 Precip Anomaly  
Valid: 20220930 - 20221006



GEFS Week-1 Exceedance Prob. > 25mm  
Valid: 20220930 - 20221006



GEFS Week-1 Exceedance Prob. > 50mm  
Valid: 20220930 - 20221006



Rainfall deficit of more than 100mm is expected in most parts of Ilocos & Cordillera Region and Mindoro, 40-90mm for the rest of the country except in some areas in southern Mindanao (20-40mm increase of rainfall) during the forecast period.

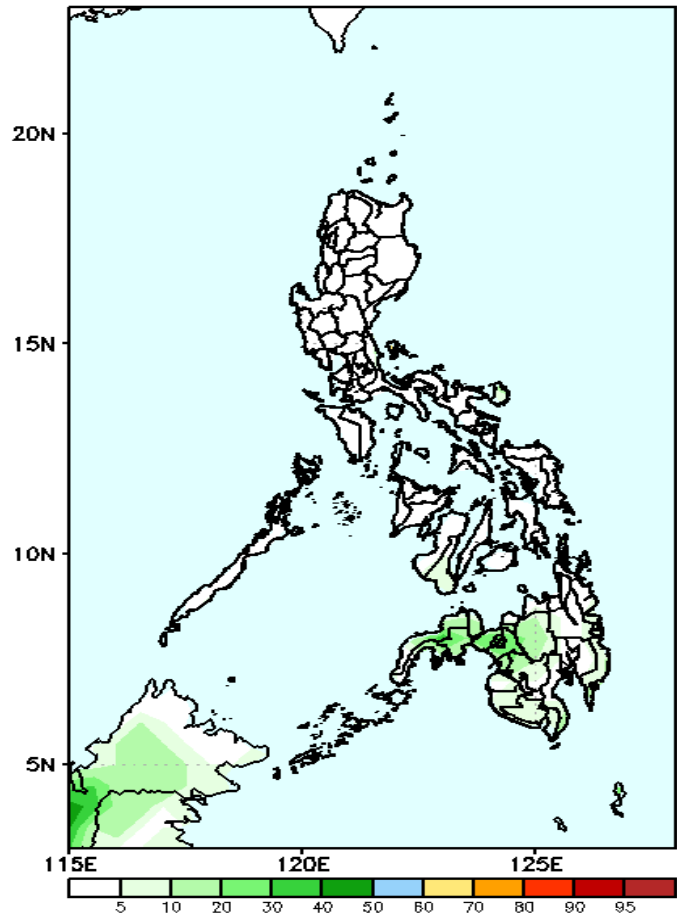
High probability of rainfall to exceed 25mm in most parts of the country except in some areas in western and central Luzon during the forecast period.

High probability of rainfall to exceed 50mm in most parts of Zamboanga Peninsula, Northern Mindanao, Lanao del Sur, part of North Cotabato and Compostela Valley during the forecast period.

# Exceedance Probability > 100/150/200 mm

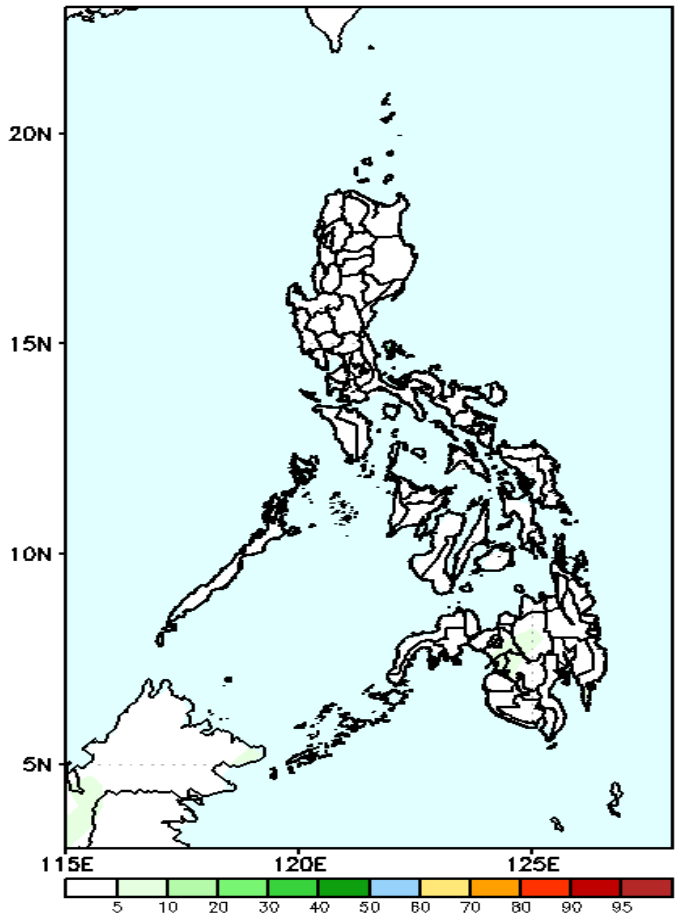
Week 1: Sep 30- Oct 06, 2022

GEFS Week-1 Exceedance Prob. > 100mm  
Valid: 20220930 – 20221006



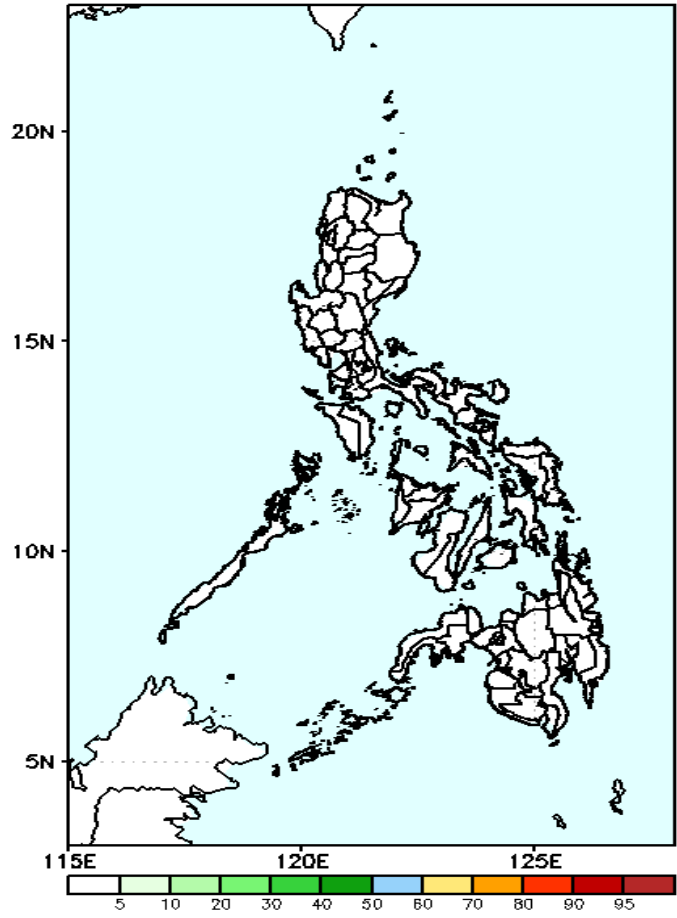
Low probability of rainfall to exceed 100mm in most parts of the country during the forecast period.

GEFS Week-1 Exceedance Prob. > 150mm  
Valid: 20220930 – 20221006



Low probability of rainfall to exceed 150mm in most parts of the country during the forecast period.

GEFS Week-1 Exceedance Prob. > 200mm  
Valid: 20220930 – 20221006

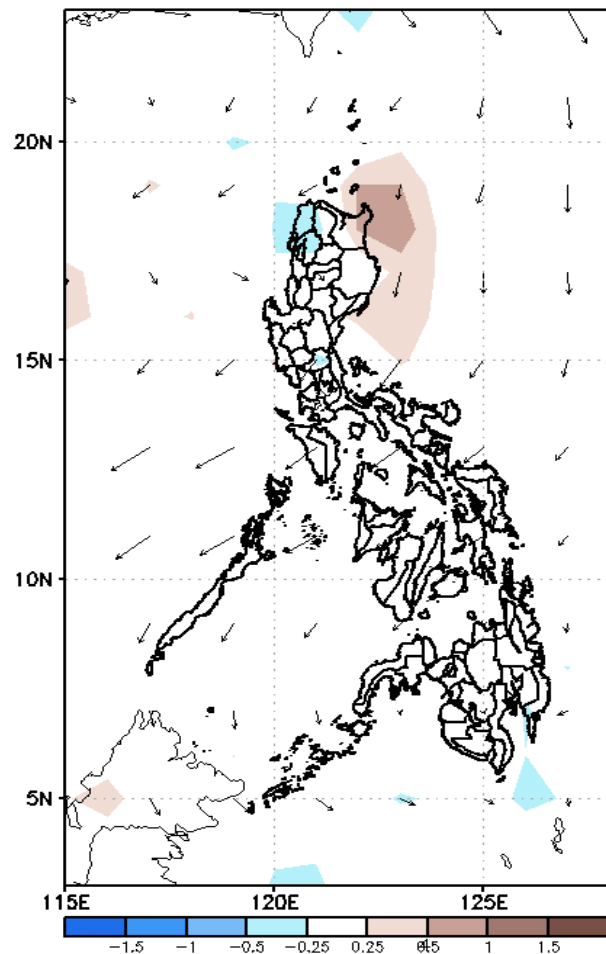


Low probability of rainfall to exceed 200mm in most parts of the country during the forecast period.

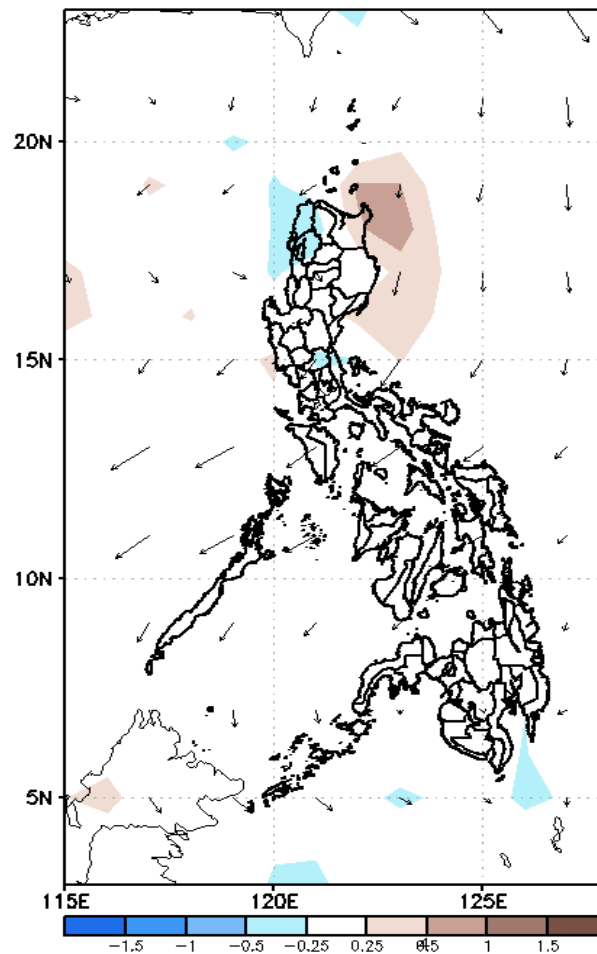
# GEFS Week-2 Forecasts: Wind Anomaly Forecast

Week 2: Oct 07-13, 2022

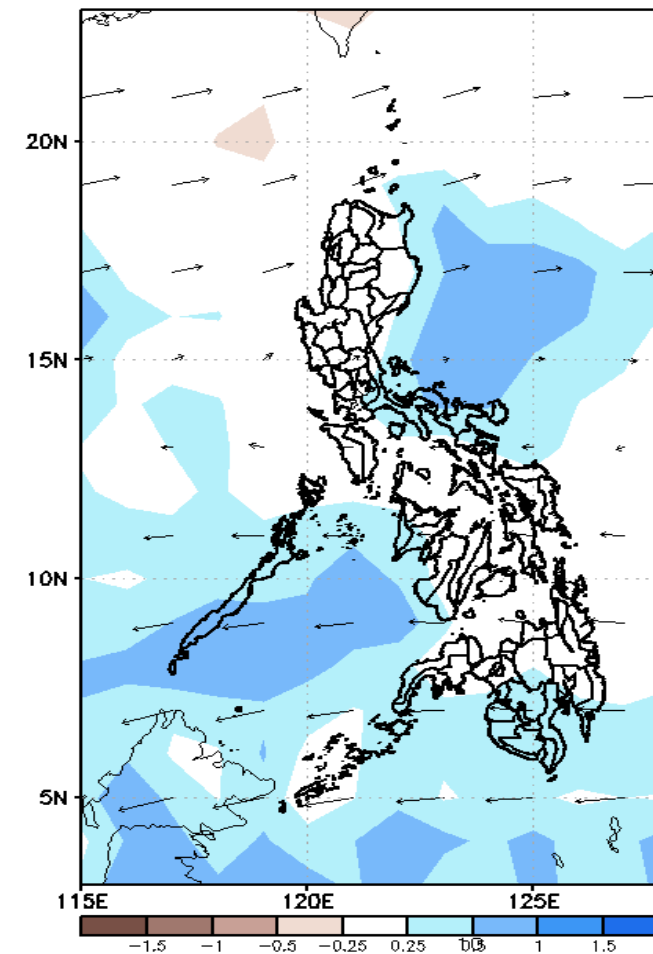
GEFS Week-2 850-hPa Divergence and Wind Anom  
Valid: 20221007 - 20221013



GEFS Week-2 700-hPa Divergence and Wind Anom  
Valid: 20221007 - 20221013



GEFS week-2 200-hPa Divergence and Wind Anom  
Valid: 20221007 - 20221013

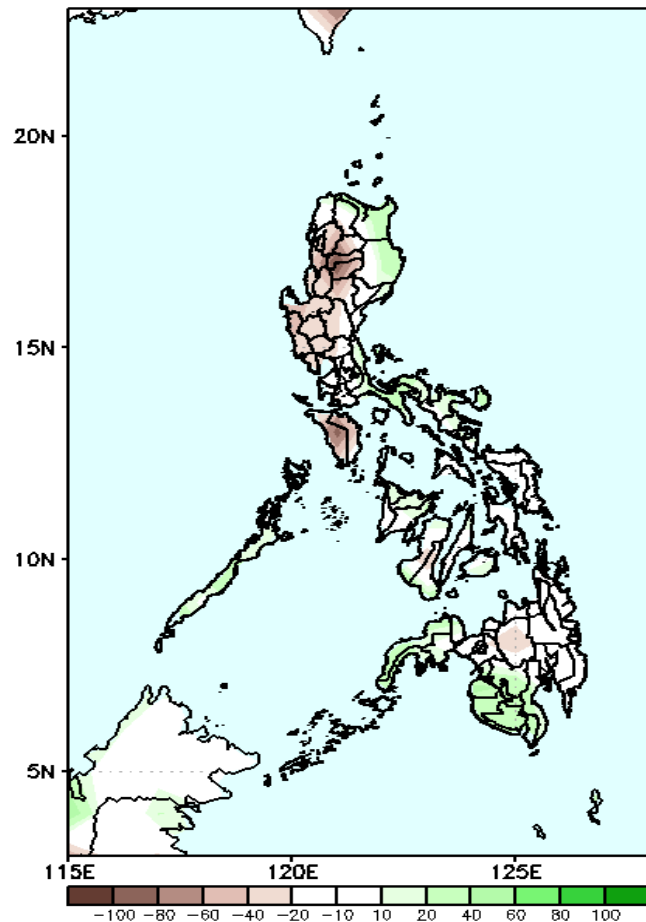


Northeasterly wind flow affecting Extreme Northern Luzon; Easterlies affecting most parts of the country during the forecast period.

# Precipitation Anomaly and Exceedance Probability > 25/50 mm

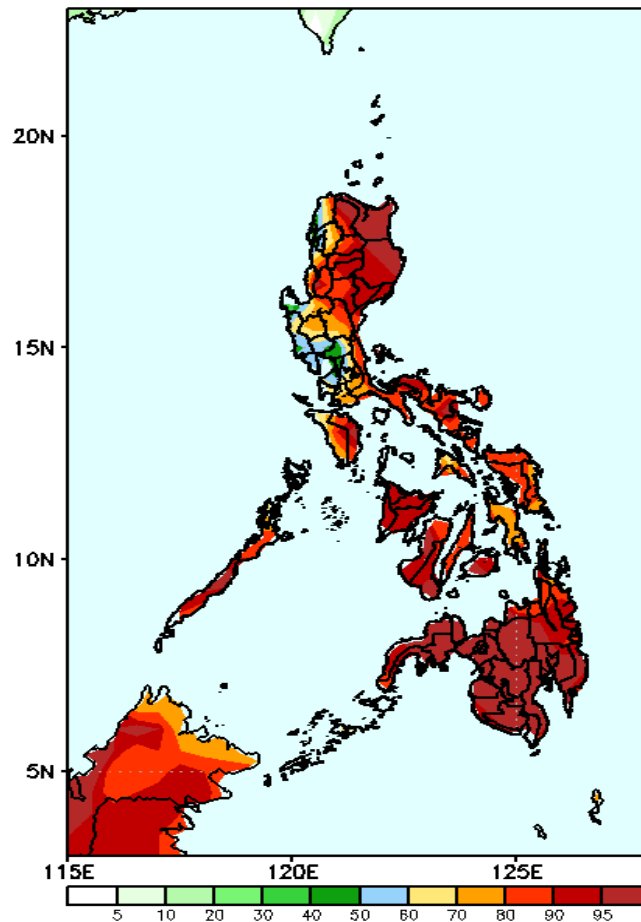
Week 2: Oct 07-13, 2022

GEFS Week-2 Precip Anomaly  
Valid: 20221007 - 20221013



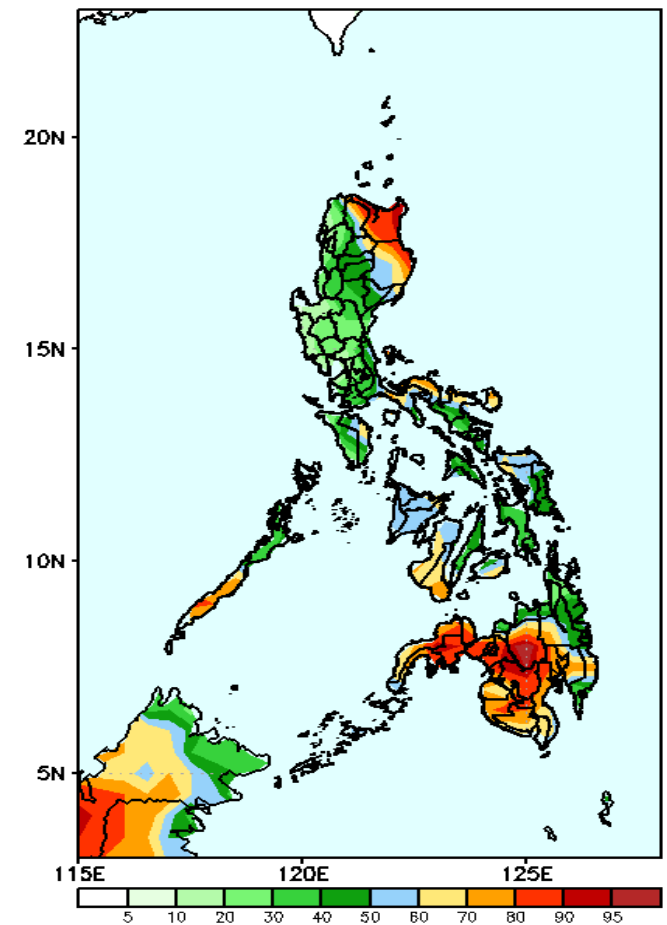
Rainfall deficit of 20-80mm is expected in most parts of the country except in Cagayan, Isabela and western Mindanao where 20-60mm increase of rainfall is more likely during the forecast period.

GEFS Week-2 Exceedance Prob. > 25mm  
Valid: 20221007 - 20221013



High probability of rainfall to exceed 25mm in most parts of the country during the forecast period.

GEFS Week-2 Exceedance Prob. > 50mm  
Valid: 20221007 - 20221013



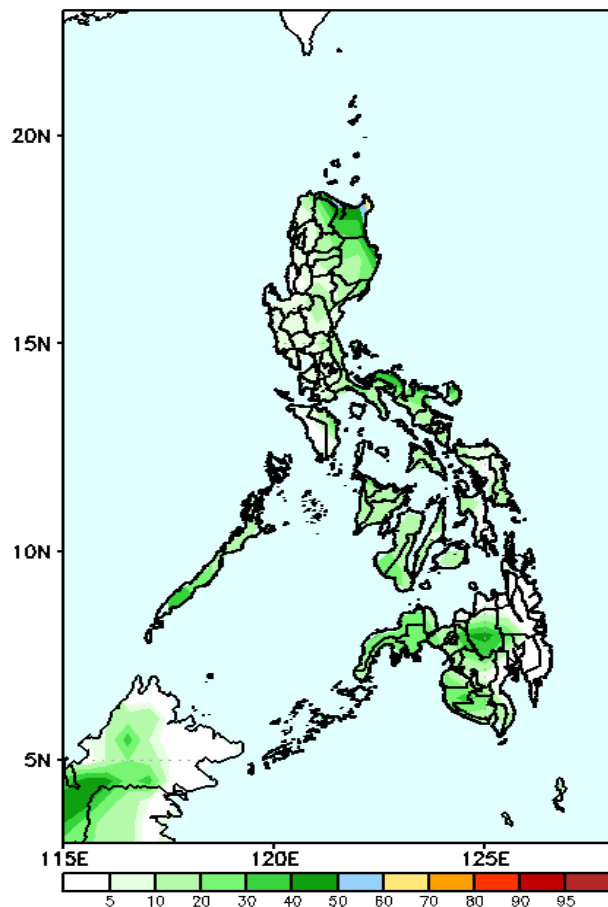
High probability of rainfall to exceed 50mm in most parts of Apayao, Cagayan, Isabela & Mindanao and some areas in Bicol Region & Negros Island while less chance in CARAGA Region and the rest of Luzon and Visayas during the forecast period.



# Exceedance Probability > 100/150/200 mm

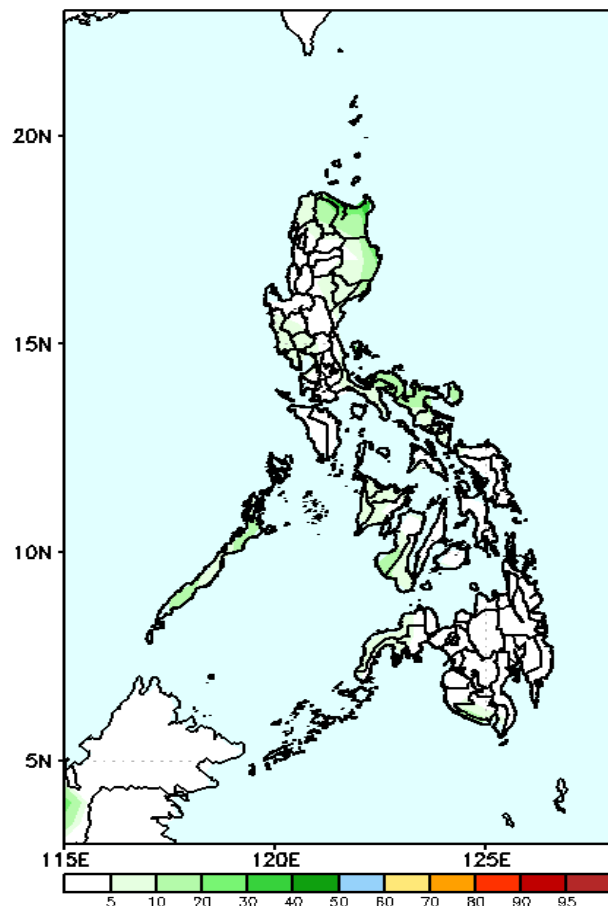
Week 2: Oct 07-13, 2022

GEFS Week-2 Exceedance Prob. > 100mm  
Valid: 20221007 - 20221013



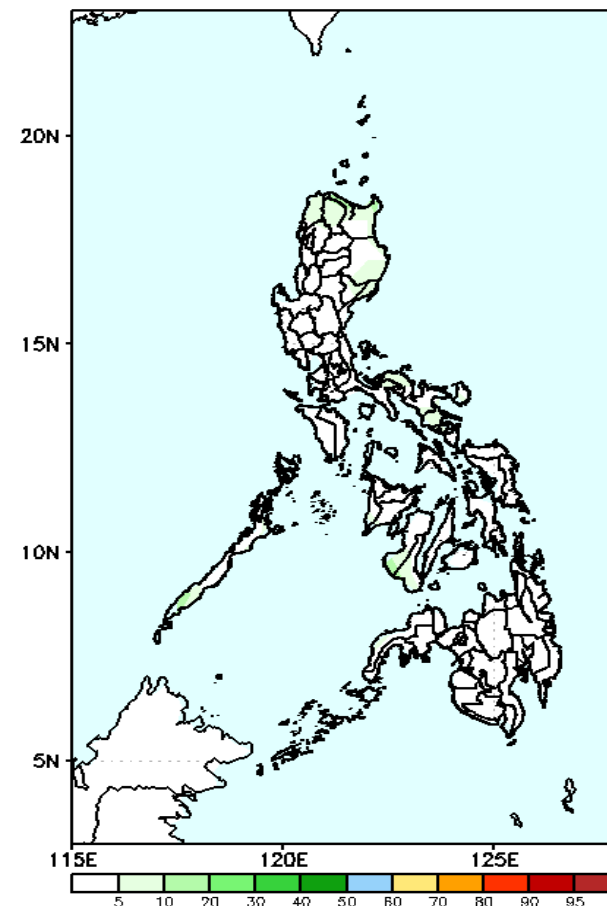
Low probability of rainfall to exceed 100mm in most parts of the country during the forecast period.

GEFS Week-2 Exceedance Prob. > 150mm  
Valid: 20221007 - 20221013



Low probability of rainfall to exceed 150mm in most parts of the country during the forecast period.

GEFS Week-2 Exceedance Prob. > 200mm  
Valid: 20221007 - 20221013

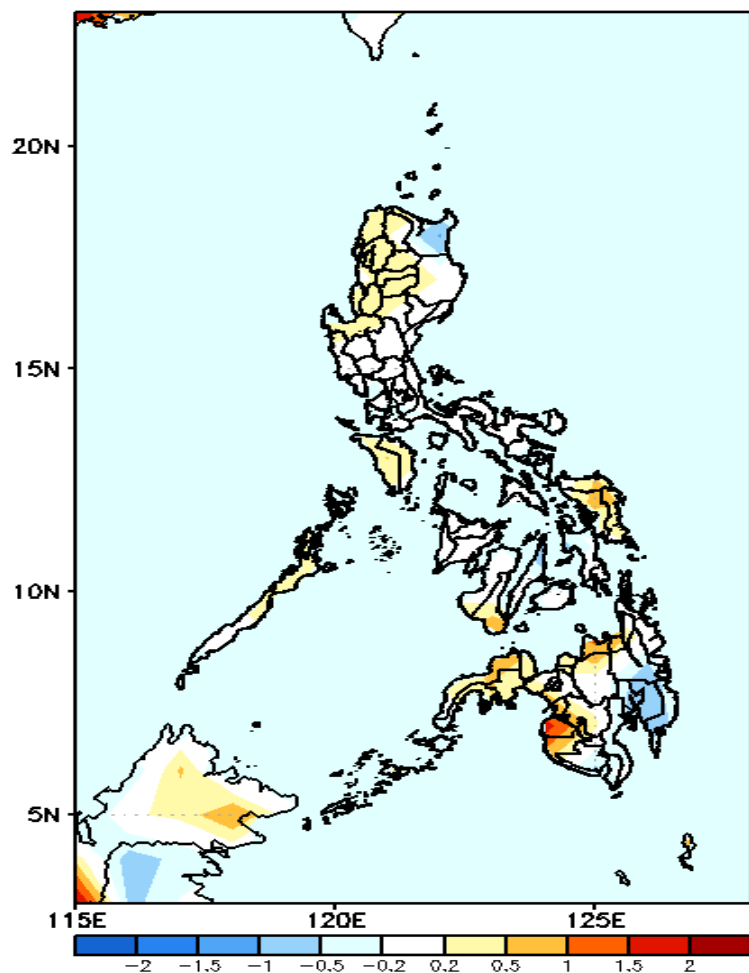


Low probability of rainfall to exceed 200mm in most parts of the country during the forecast period.



# GEFS Week-1 & 2 Forecasts: T2m Anomaly

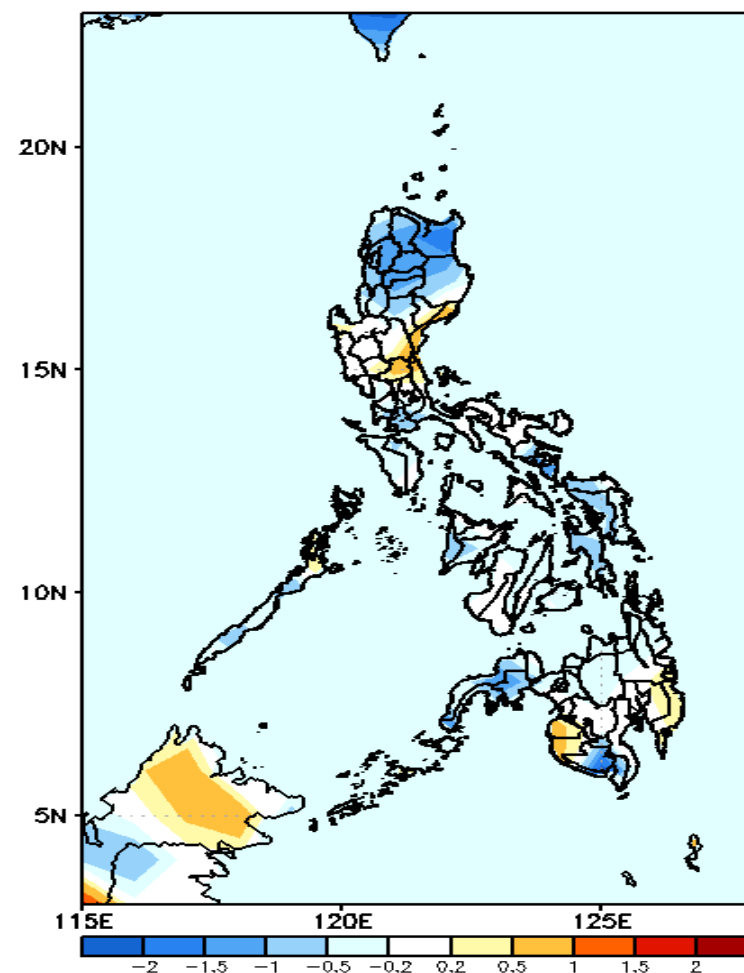
GEFS Week-1 T2m Anomaly  
Valid: 20220930 - 20221006



## 2m Temperature Week 1: Sep 30- Oct 06, 2022

Near to slightly warmer than average surface air temperature will likely experience in most parts of the country except in Cagayan and Davao Region( slight cooler) and Maguindanao (warmer) during the forecast period.

GEFS Week-2 T2m Anomaly  
Valid: 20221007 - 20221013



## 2m Temperature Week 2: Oct 07-13, 2022

Near to cooler than average surface air temperature will likely experience in most parts of the country except in eastern parts of Central Luzon, Maguindanao, Sultan Kudarat and Davao Oriental where slightly warmer than average temperature is expected during the forecast period.