

Week 1 & Week 2 Forecast for the Philippines using GEFS Model



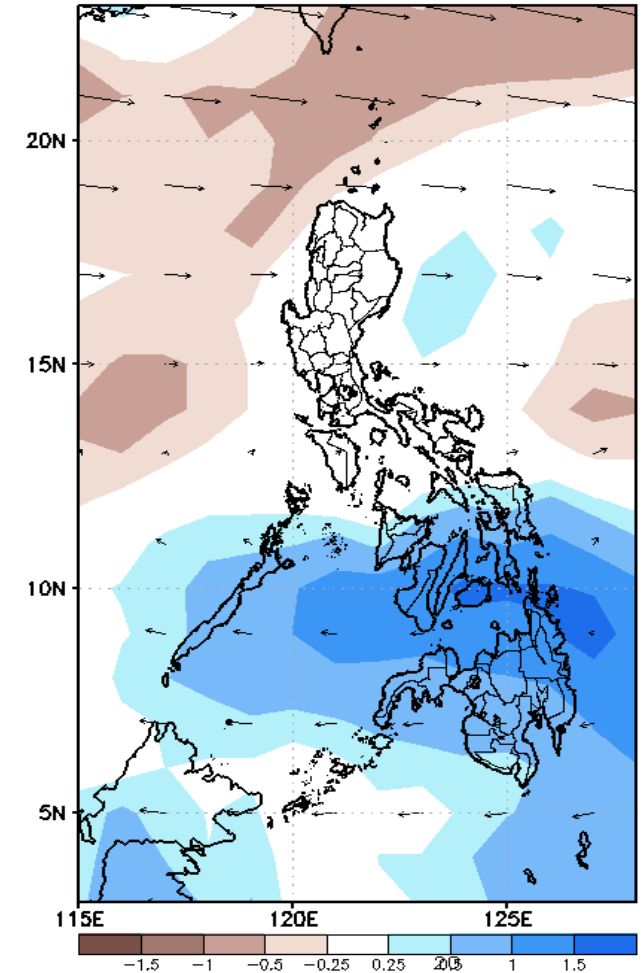
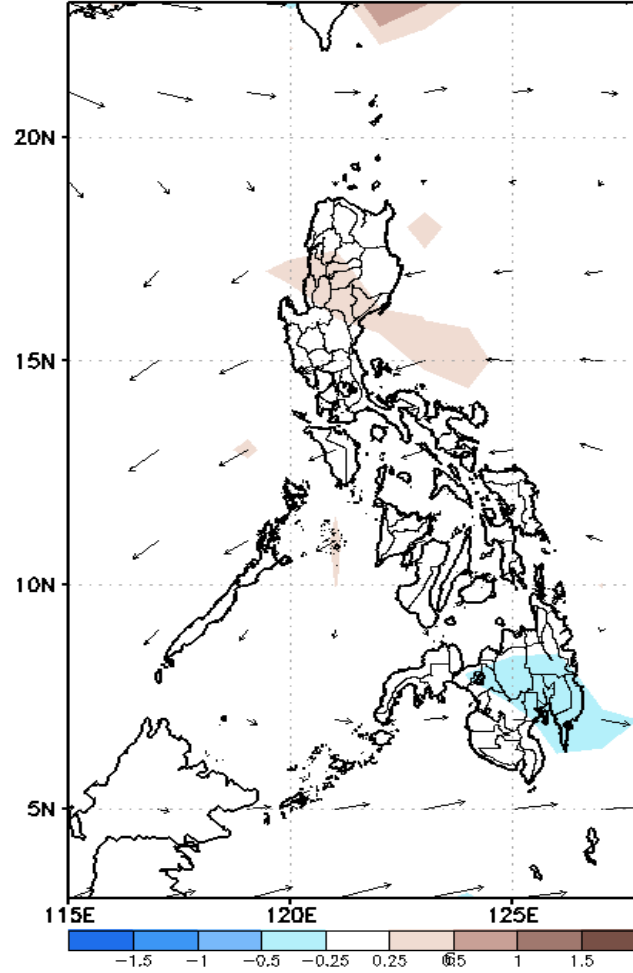
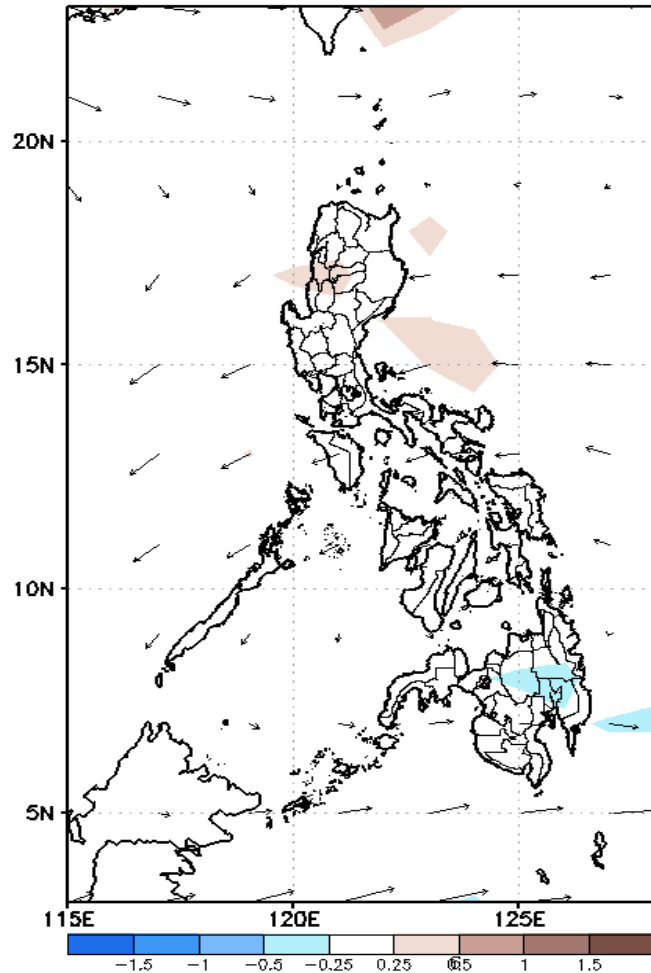
GEFS Week-1 Forecasts: Divergence & Wind Anomaly

Week 1: April 30 – May 06, 2020

GEFS Week-1 850-hPa Divergence and Wind Anom
Valid: 20200430 – 20200506

GEFS Week-1 700-hPa Divergence and Wind Anom
Valid: 20200430 – 20200506

GEFS Week-1 200-hPa Divergence and Wind Anom
Valid: 20200430 – 20200506

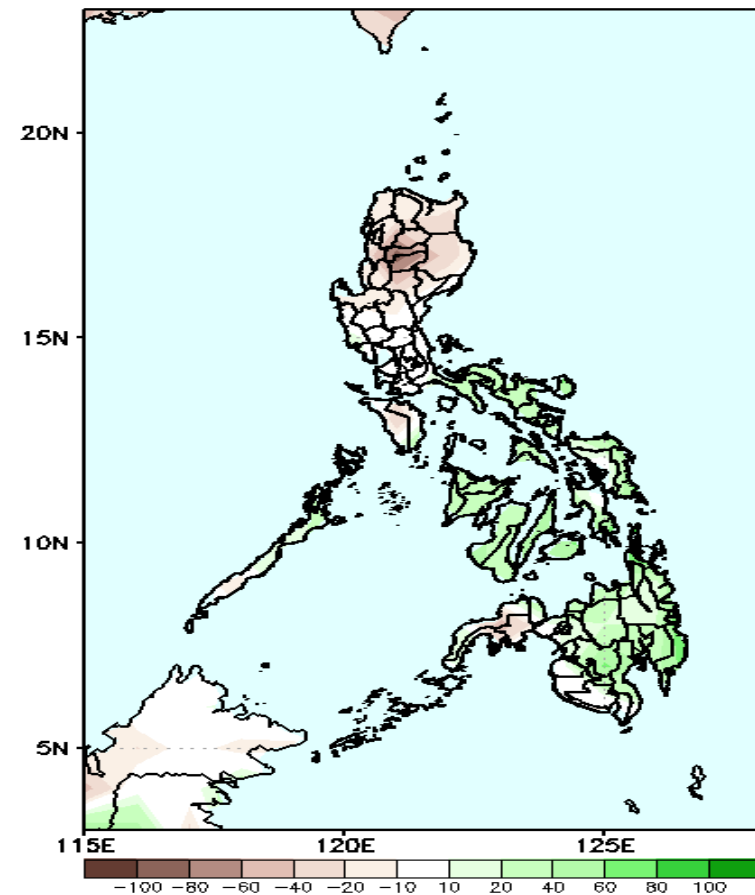


Upper level (750 hPa) Divergence suggest likelihood of precipitation in some parts of Luzon, most parts of Visayas and most parts of Mindanao due to localized and widespread thunderstorm activity. Easterlies affecting most parts of the country while southwest windflow affecting southern Mindanao during the forecast period.

Precipitation Anomaly and Exceedance Probability > 25/50 mm

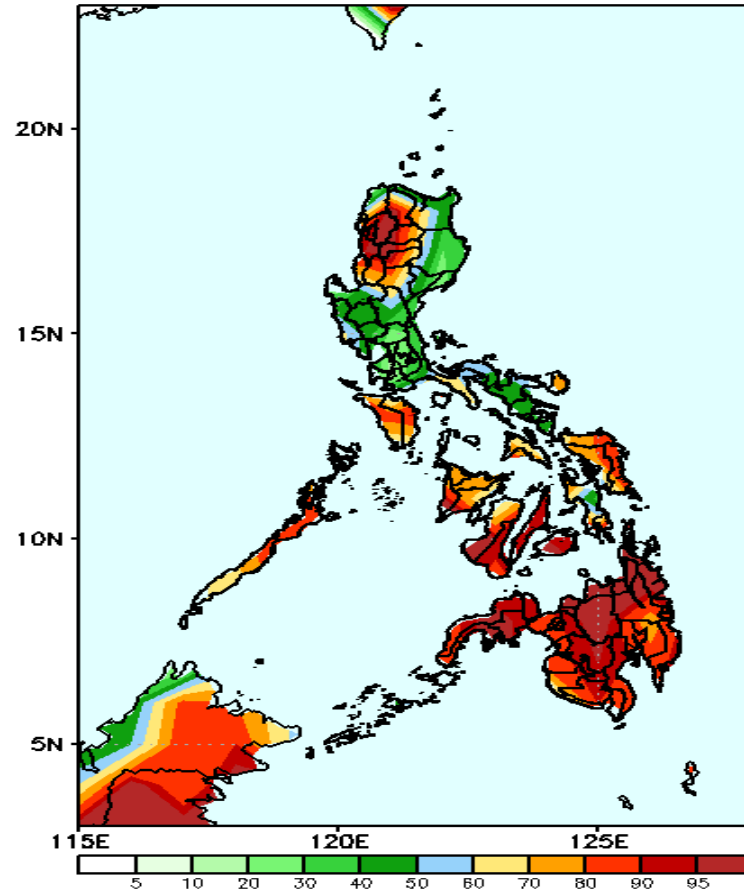
Week 1: April 30 – May 06, 2020

GEFS Week-1 Precip Anomaly
Valid: 20200430 – 20200506



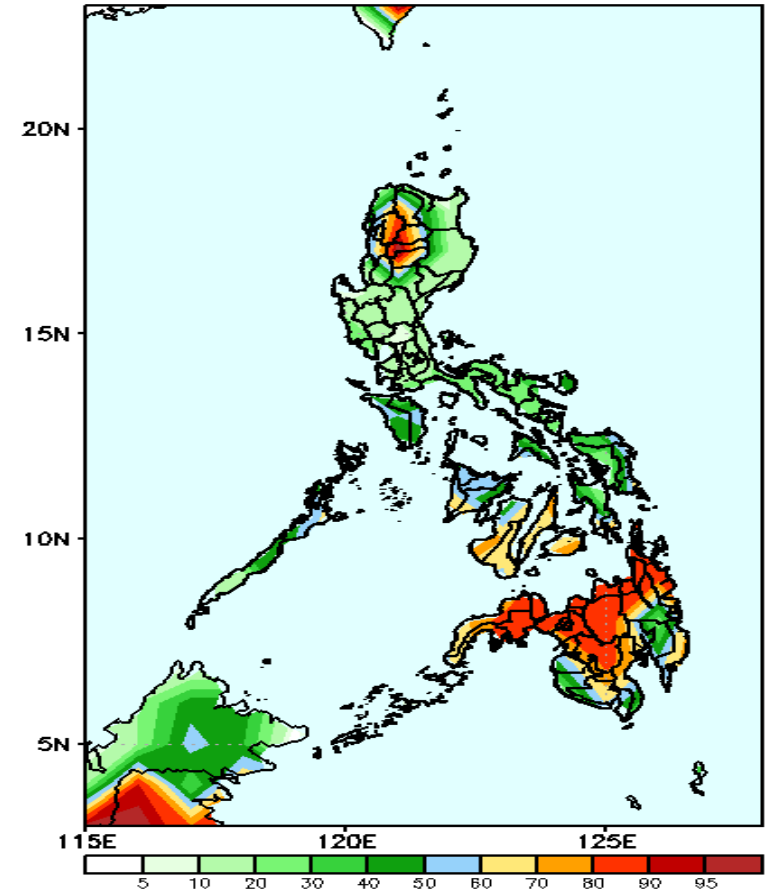
Increase of rainfall of 40-60mm is expected in most parts of Visayas and Mindanao while Luzon will likely to have rainfall deficit of 20-80mm during the forecast period.

GEFS Week-1 Exceedance Prob. > 25mm
Valid: 20200430 – 20200506



High probability of rainfall to exceed 25mm in northwestern Luzon, Catanduanes, Mindoro, Palawan, most parts of Visayas and Mindanao is expected while 40-70% probability for the rest of the country during the forecast period.

GEFS Week-1 Exceedance Prob. > 50mm
Valid: 20200430 – 20200506

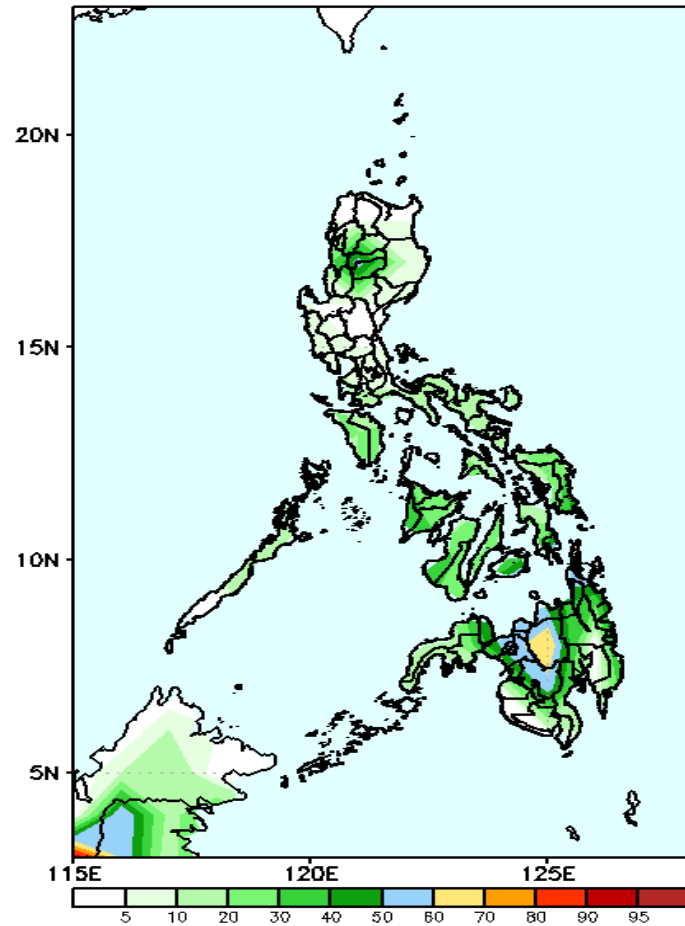


High probability of rainfall to exceed 50mm in CAR, Central Visayas and northern and central Mindanao (including Zamboanga Peninsula) is expected while 30-70% probability for the rest of the country during the forecast period.

Exceedance Probability > 100/150/200 mm

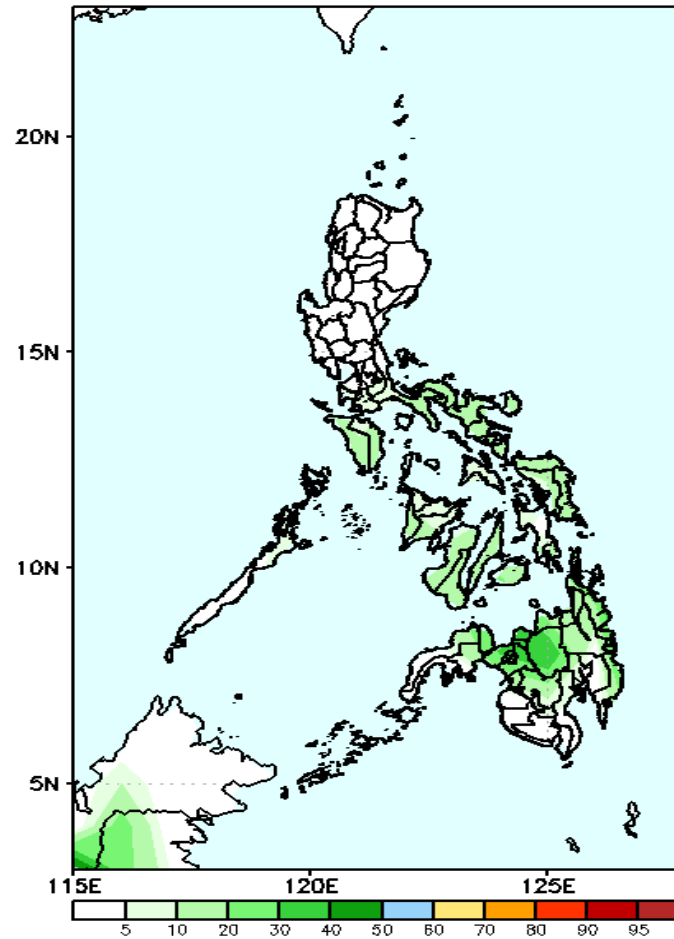
Week 1: April 30 – May 06, 2020

GEFS Week-1 Exceedance Prob. > 100mm
Valid: 20200430 – 20200506



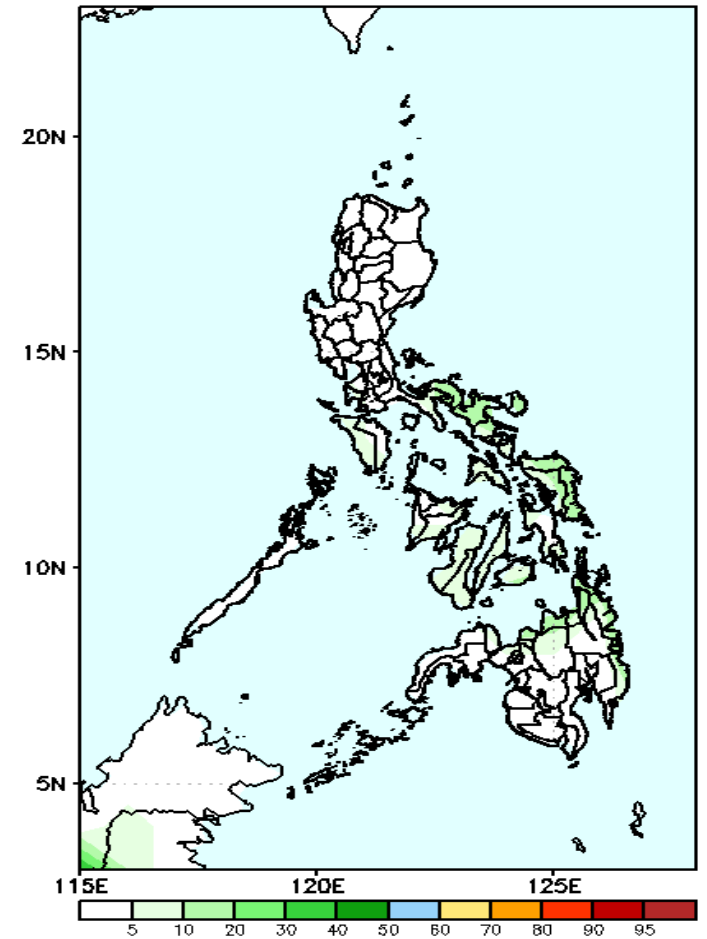
Less probability of rainfall to exceed 100mm in most parts of the country during the forecast period.

GEFS Week-1 Exceedance Prob. > 150mm
Valid: 20200430 – 20200506



Less probability of rainfall to exceed 150mm in most parts of the country during the forecast period.

GEFS Week-1 Exceedance Prob. > 200mm
Valid: 20200430 – 20200506

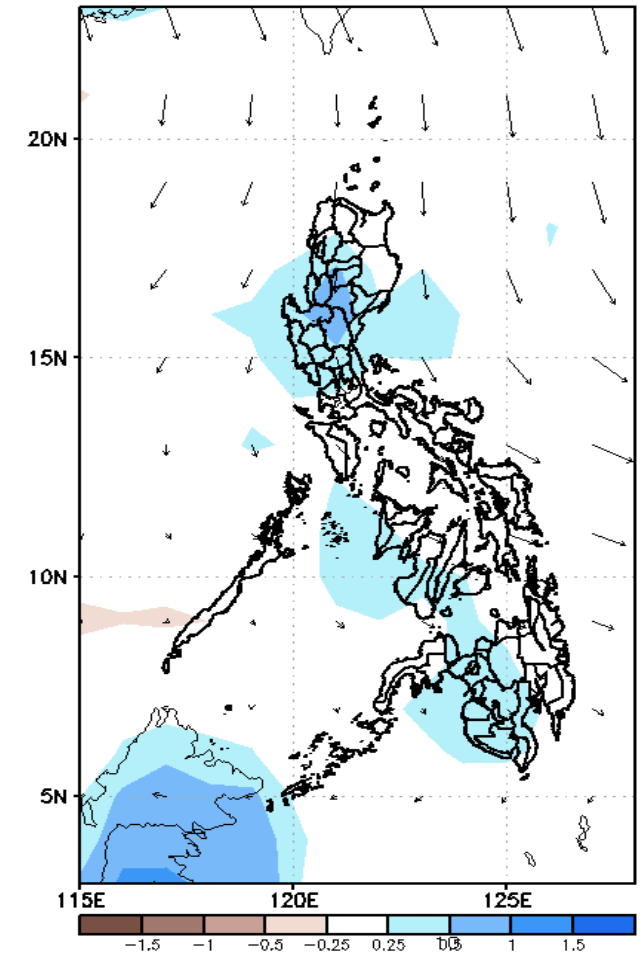
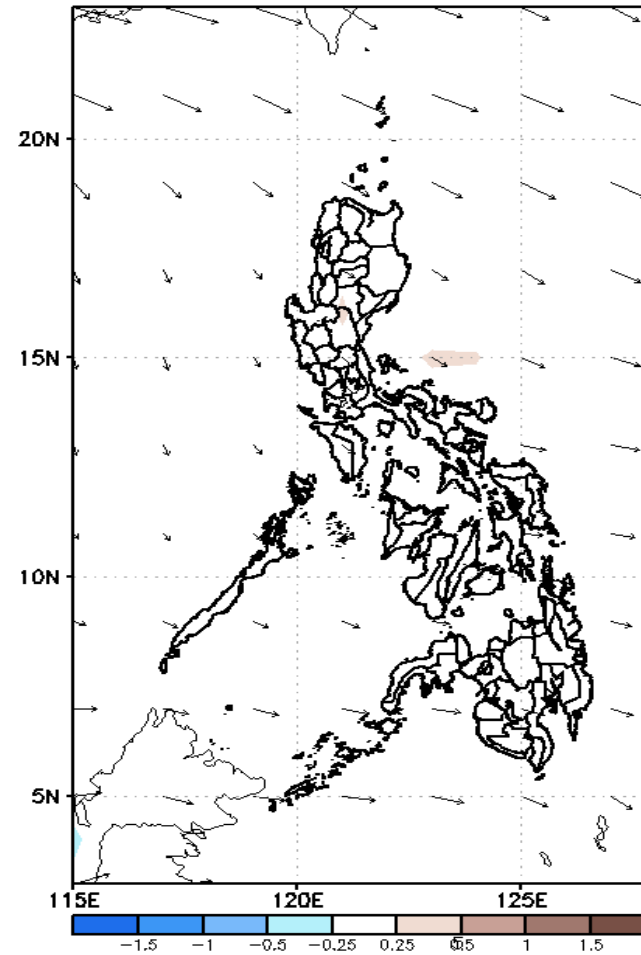
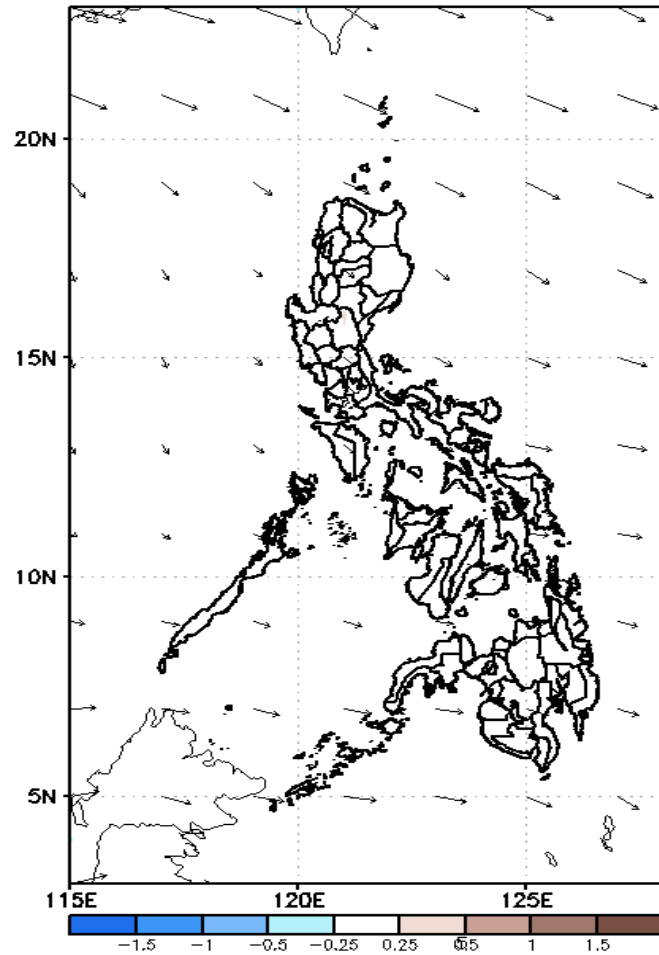


Less probability of rainfall to exceed 200mm in most parts of the country during the forecast period.

GEFS Week-2 Forecasts: Divergence & Wind Anomaly

Week 2: May 07 - 13, 2020

GEFS Week-2 850-hPa Divergence and Wind Anom GEFS Week-2 700-hPa Divergence and Wind Anom GEFS week-2 200-hPa Divergence and Wind Anom
Valid: 20200507 - 20200513 Valid: 20200507 - 20200513 Valid: 20200507 - 20200513

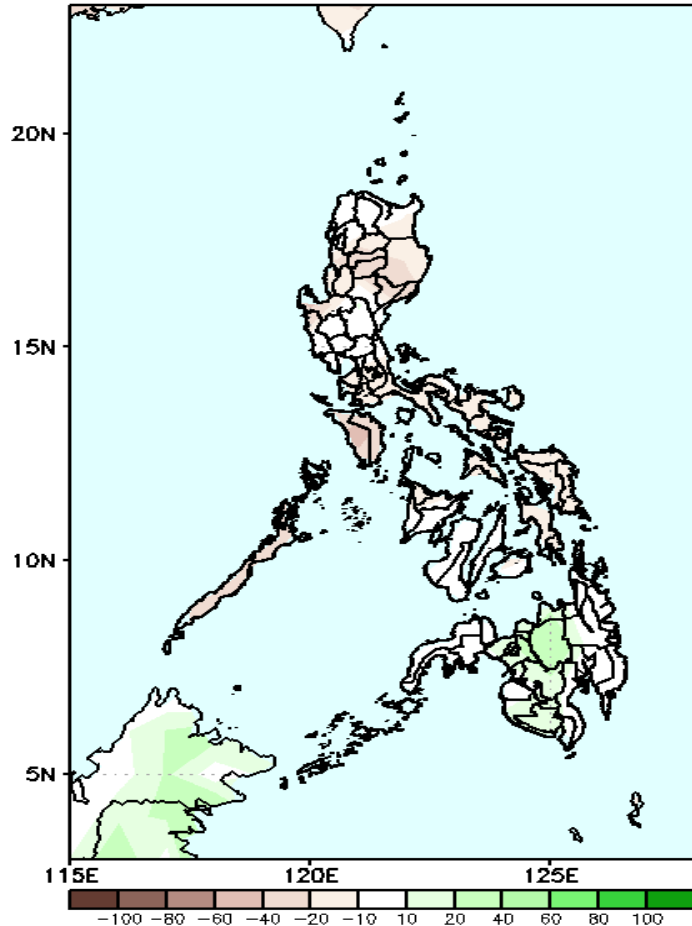


Upper level (750 hPa) Divergence suggest likelihood of precipitation in most parts of Luzon, some parts of Visayas and most parts of Mindanao due to localized and widespread thunderstorm activity. Easterlies affecting most parts of the country while southwest windflow affecting Mindanao during the forecast period.

Precipitation Anomaly and Exceedance Probability > 25/50 mm

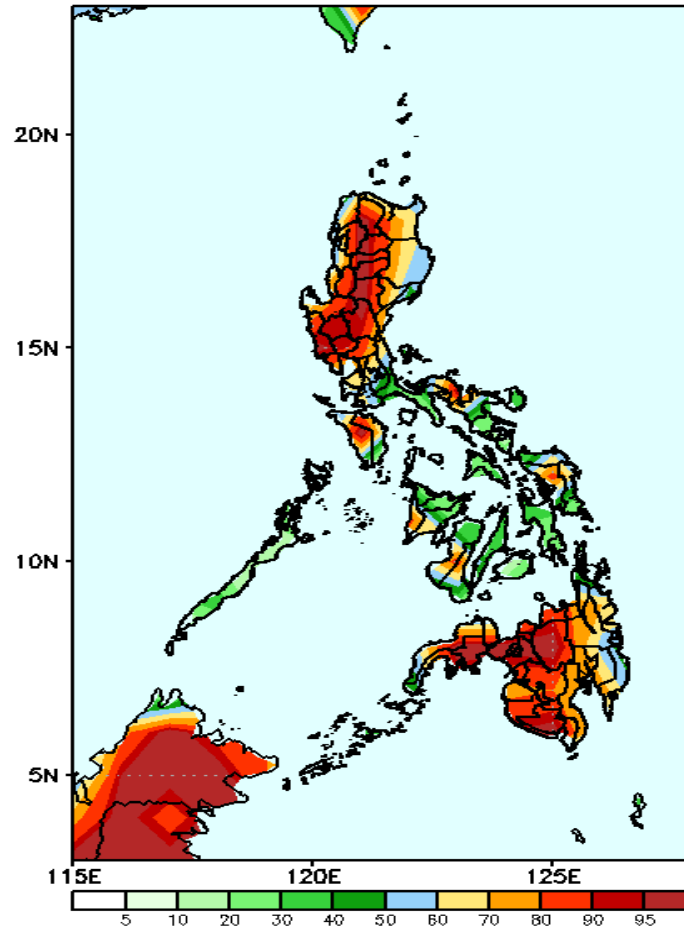
Week 2: May 07 - 13, 2020

GEFS Week-2 Precip Anomaly
Valid: 20200507 - 20200513



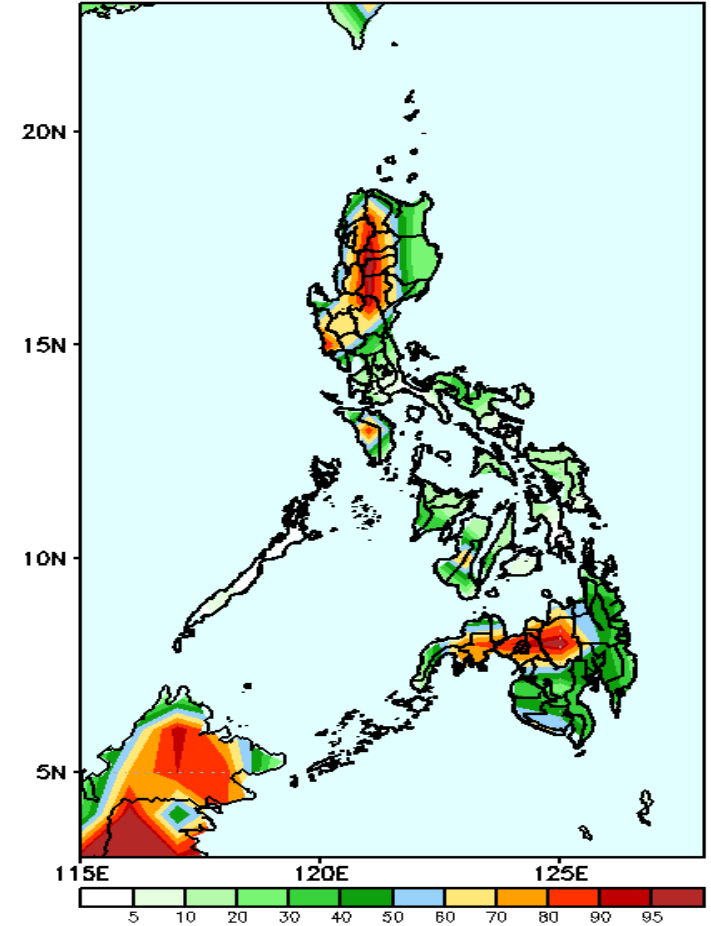
Rainfall deficit of up to 40mm is expected in most part of the country except in Bukidnon that will likely to have an increase of 30mm rainfall during the forecast period. .

GEFS Week-2 Exceedance Prob. > 25mm
Valid: 20200507 - 20200513



High probability of rainfall to exceed 25mm in most part of Luzon and Mindanao is expected while Visayas will likely to have 40-80% probability during the forecast period.

GEFS Week-2 Exceedance Prob. > 50mm
Valid: 20200507 - 20200513

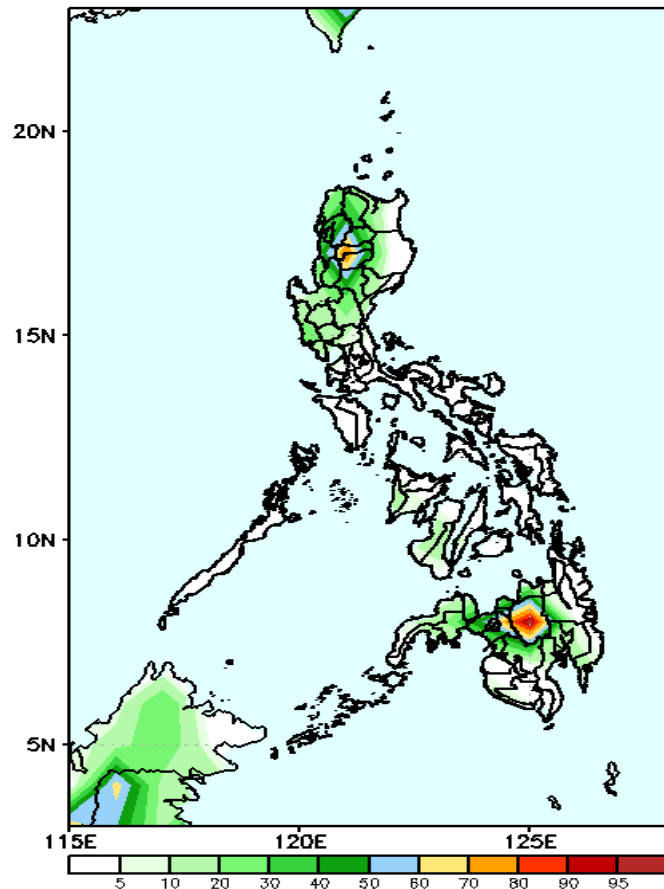


High probability of rainfall to exceed 25mm in western and Central Luzon, Mindoro, Northern Mindanao, Lanao del Sur & Norte and Zamboanga de Sur is expected while the rest of the country will have 40-70% probability during the forecast period.

Exceedance Probability > 100/150/200 mm

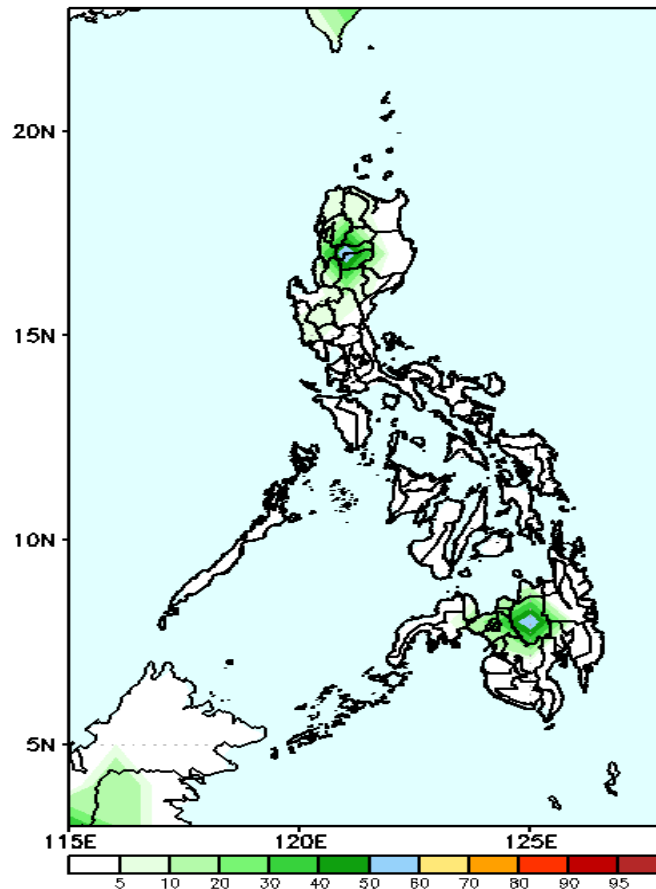
Week 2: May 07 - 13, 2020

GEFS Week-2 Exceedance Prob. > 100mm
Valid: 20200507 - 20200513



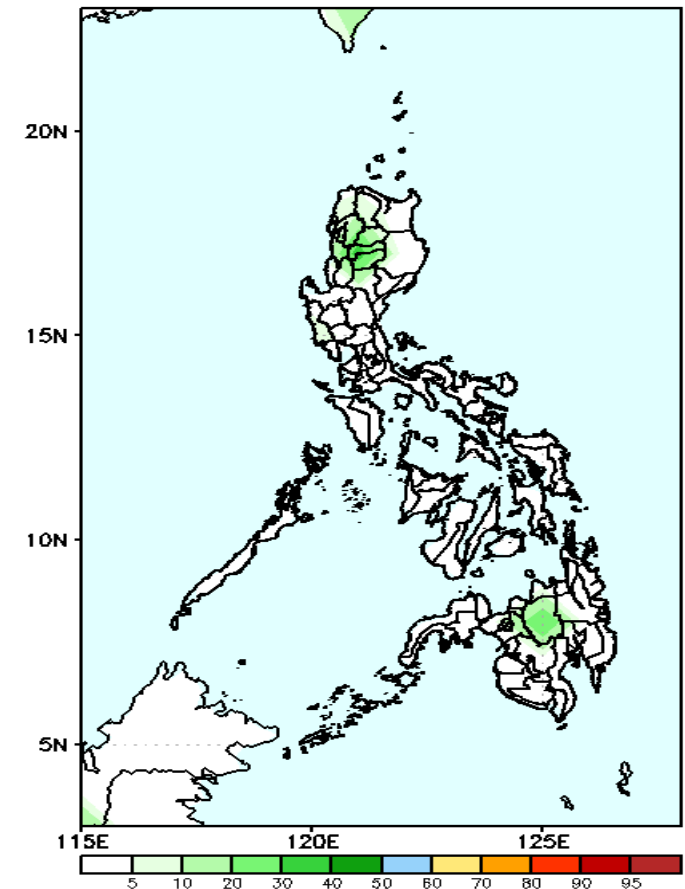
High probability of rainfall to exceed 100mm in Ifugao, Mt. Province and Bukidnon while less probability for the rest of the country during the forecast period.

GEFS Week-2 Exceedance Prob. > 150mm
Valid: 20200507 - 20200513



Less probability of rainfall to exceed 150mm in most parts of the country during the forecast period.

GEFS Week-2 Exceedance Prob. > 200mm
Valid: 20200507 - 20200513

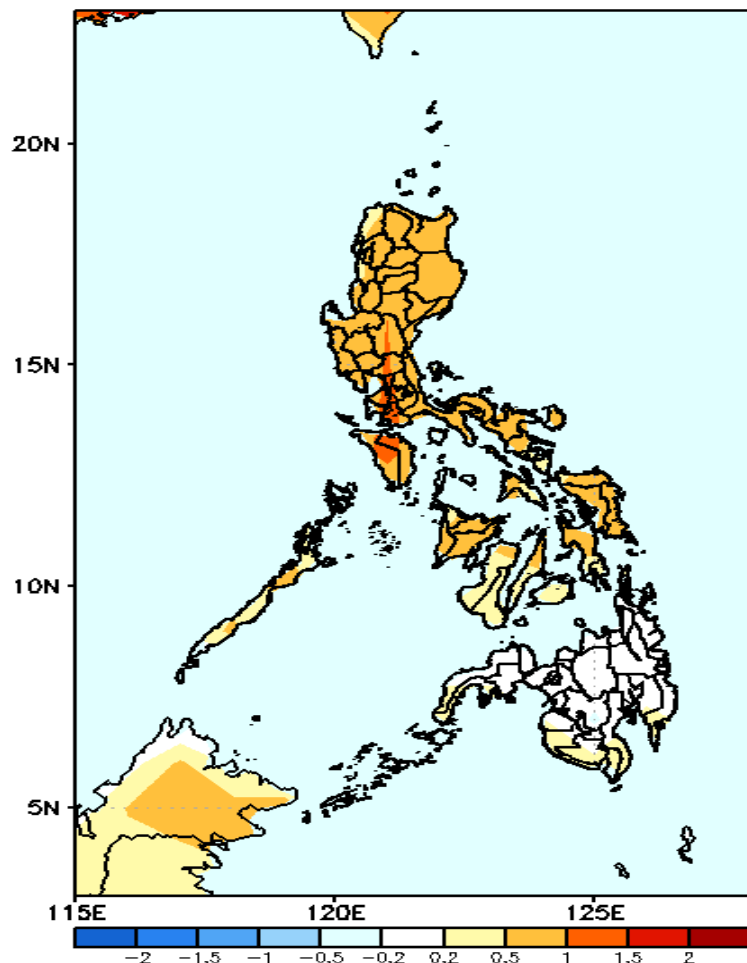


Less probability of rainfall to exceed 200mm in most parts of the country during the forecast period.



GEFS Week-1 & 2 Forecasts: T2m Anomaly

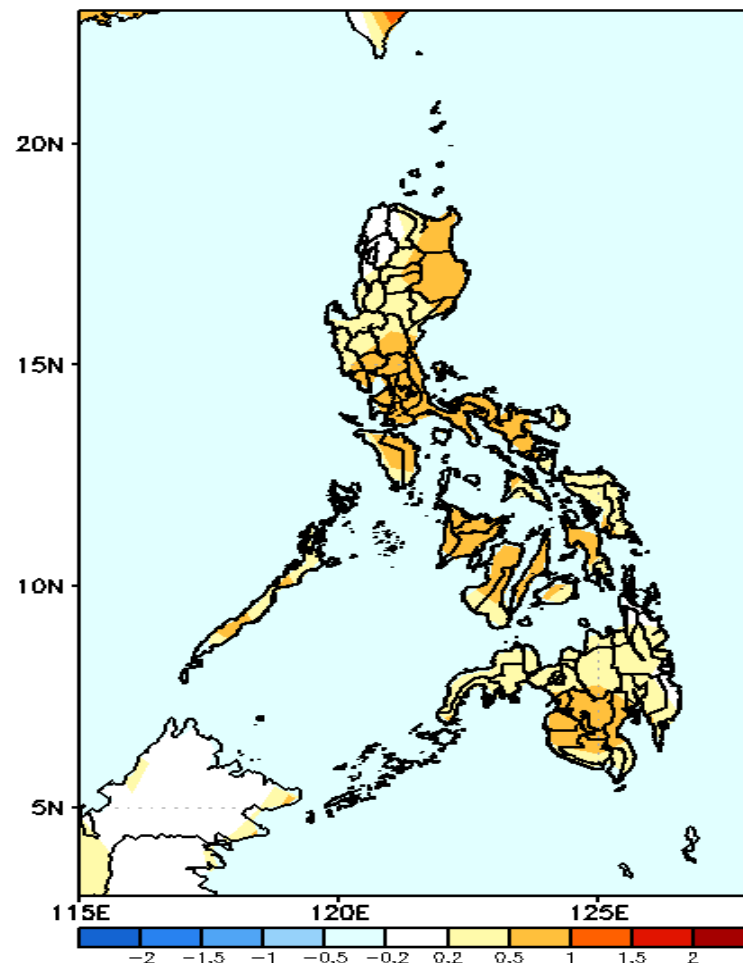
GEFS Week-1 T2m Anomaly
Valid: 20200430 – 20200506



2m Temperature Week 1: April 30 – May 06, 2020

Slightly warmer to warmer than average surface air temperature will likely experience in most parts Luzon and Visayas while average surface air temperature is expected in Mindanao during the forecast period.

GEFS Week-2 T2m Anomaly
Valid: 20200507 – 20200513



2m Temperature Week 2 May 07 - 13, 2020

Average to slightly warmer than average surface air temperature will likely experience in most parts of the country during the forecast period.