



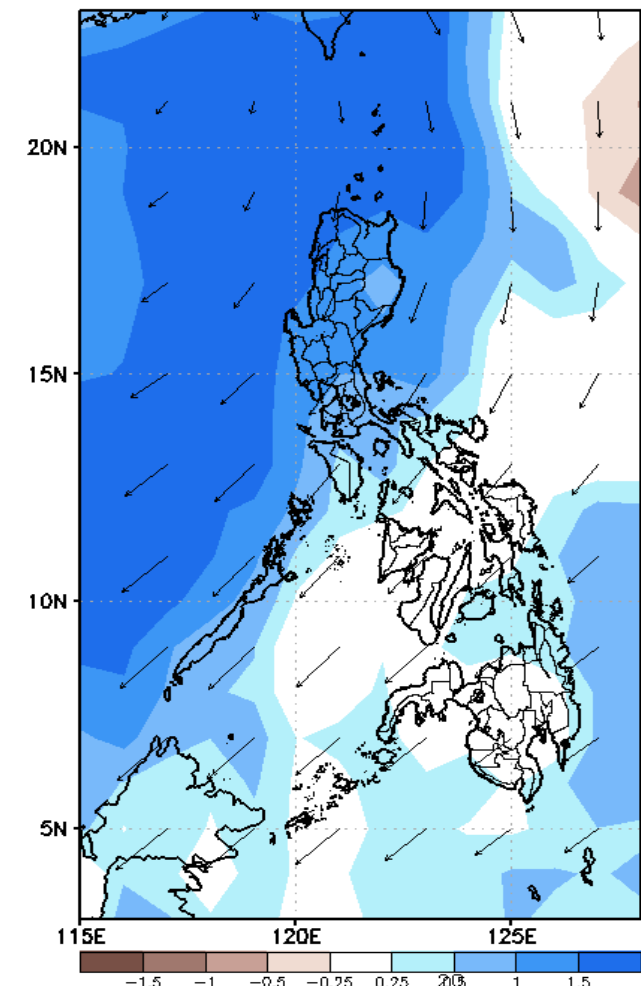
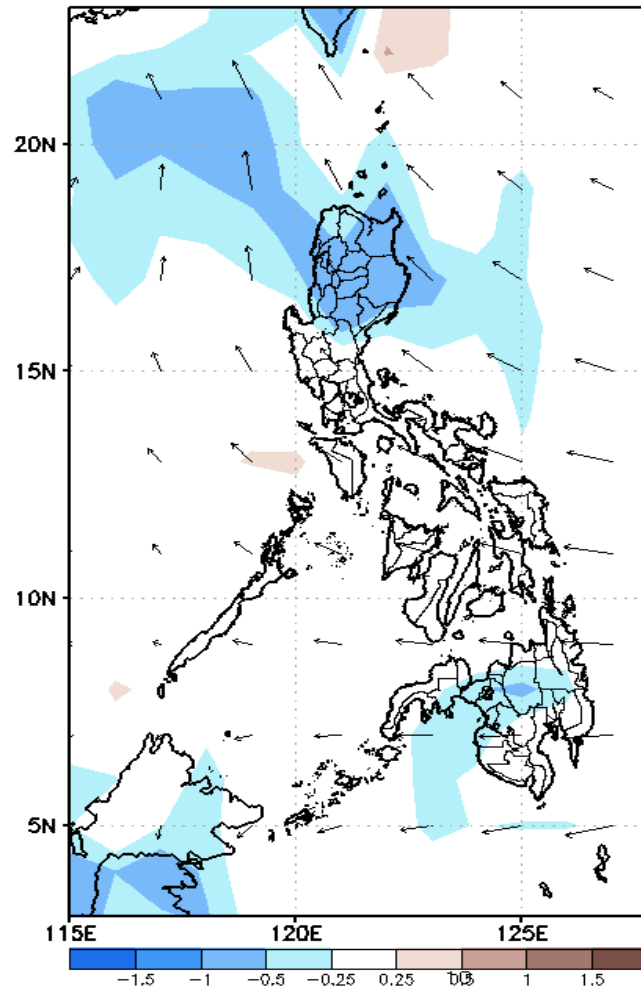
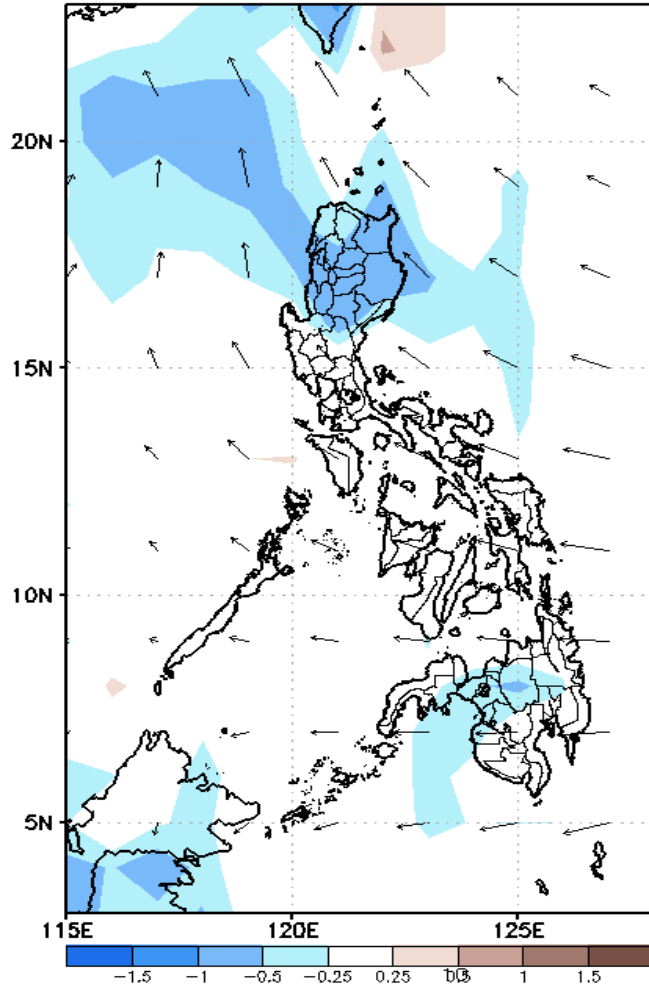
# Week 1 & Week 2 Forecast for the Philippines using GEFS Model



# GEFS Week-1 Forecasts: Divergence & Wind Anomaly

**Week 1: July 30-Aug 05, 2020**

GEFS Week-1 850-hPa Divergence and Wind Anom  
Valid: 20200730 - 20200805

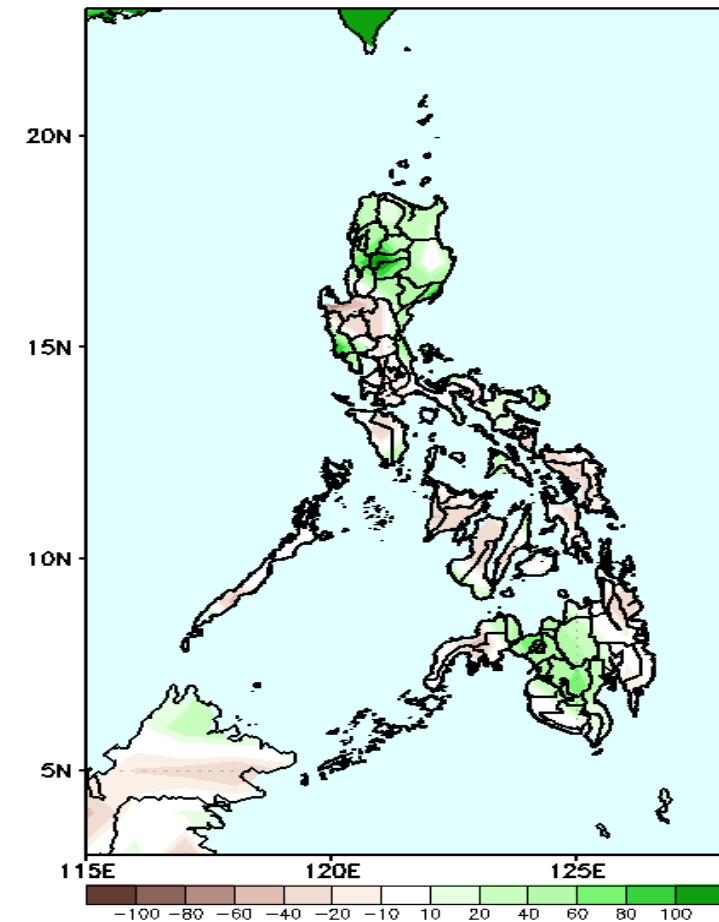


Upper level (200 hPa) Divergence suggest likelihood of precipitation in most parts of Luzon and eastern Mindanao. Southwest monsoon affecting western Luzon and western Visayas while easterlies affecting the remaining parts of the country during the forecast period.

# Precipitation Anomaly and Exceedance Probability > 25/50 mm

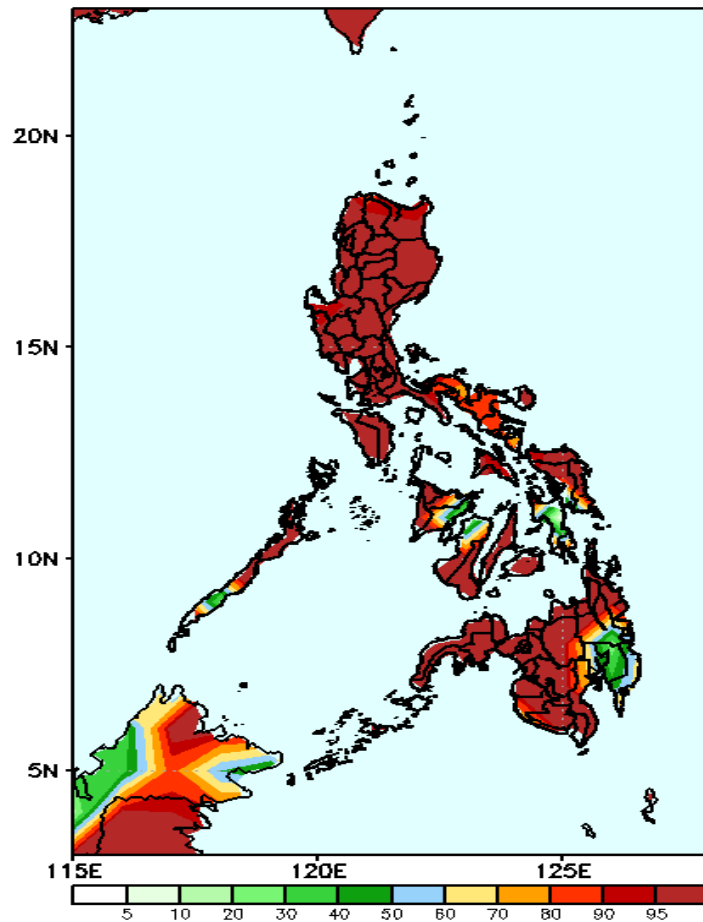
**Week 1: July 30-Aug 05, 2020**

GEFS Week-1 Precip Anomaly  
Valid: 20200730 - 20200805



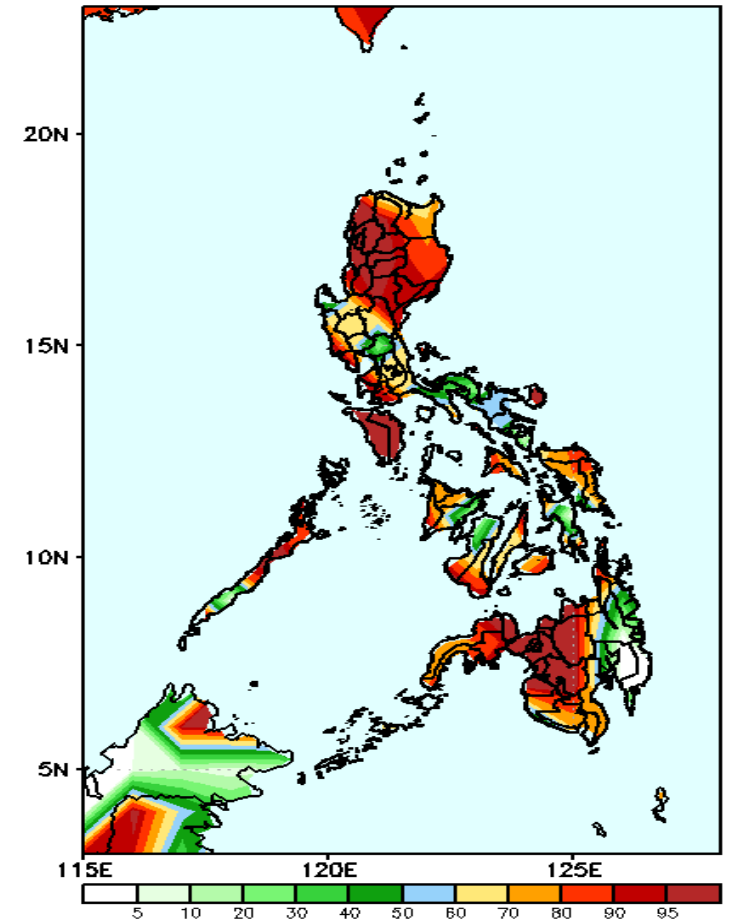
Increase of rainfall of 40-100mm in Cordillera Region and Northern Mindanao will likely experience during the forecast period.

GEFS Week-1 Exceedance Prob. > 25mm  
Valid: 20200730 - 20200805



High probability of rainfall to exceed 25mm in most parts the country is expected except in Davao Oriental and Compostela Valley during the forecast period.

GEFS Week-1 Exceedance Prob. > 50mm  
Valid: 20200730 - 20200805



High probability of rainfall to exceed 50mm in most parts the country is expected except in Davao Region during the forecast period.

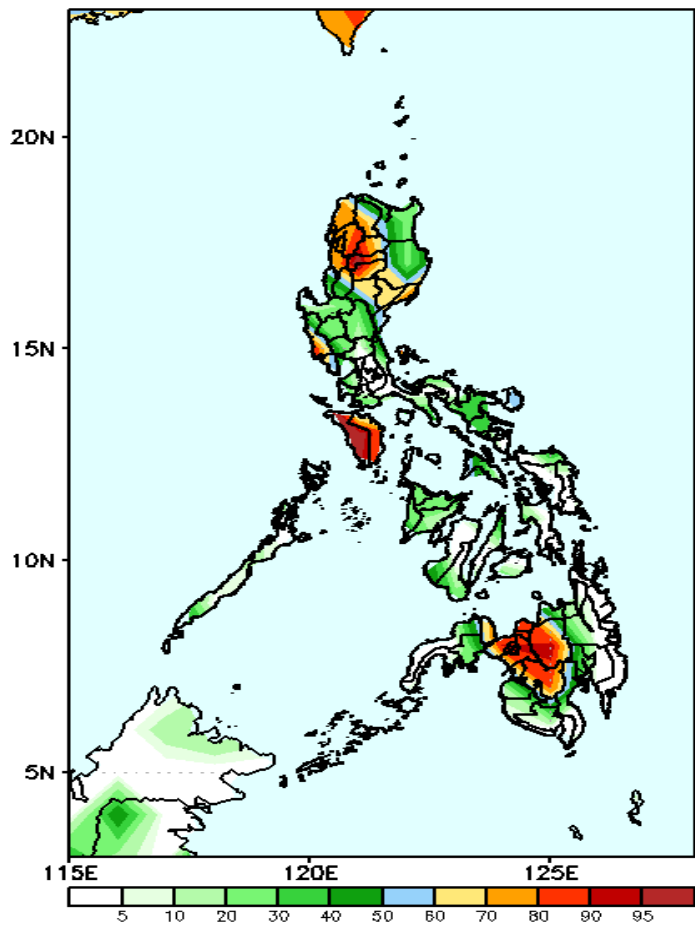
yong  
GASA



# Exceedance Probability > 100/150/200 mm

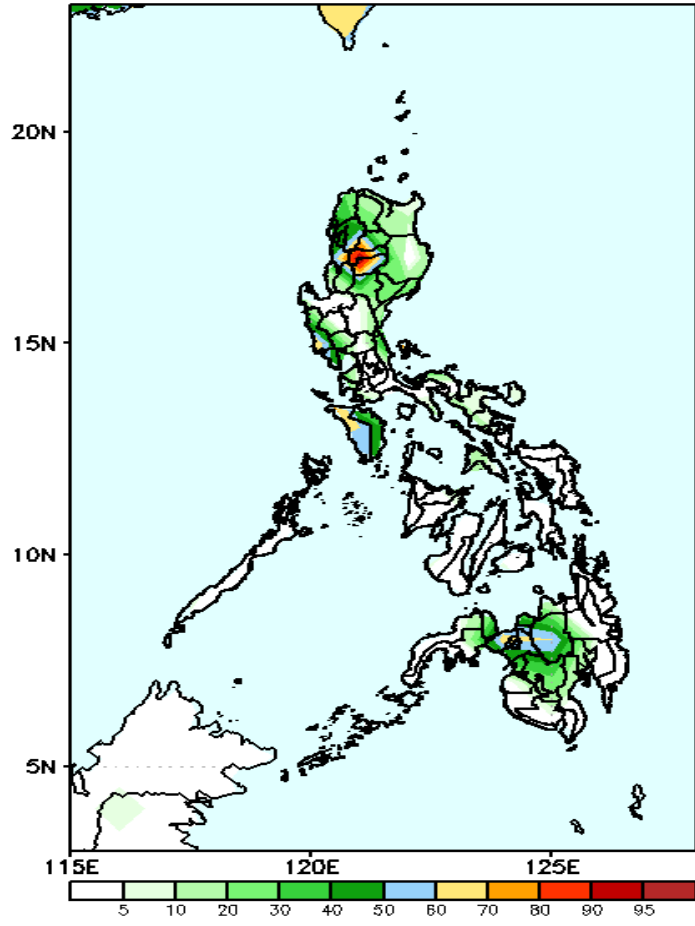
## Week 1: July 30-Aug 05, 2020

GEFS Week-1 Exceedance Prob. > 100mm  
Valid: 20200730 - 20200805



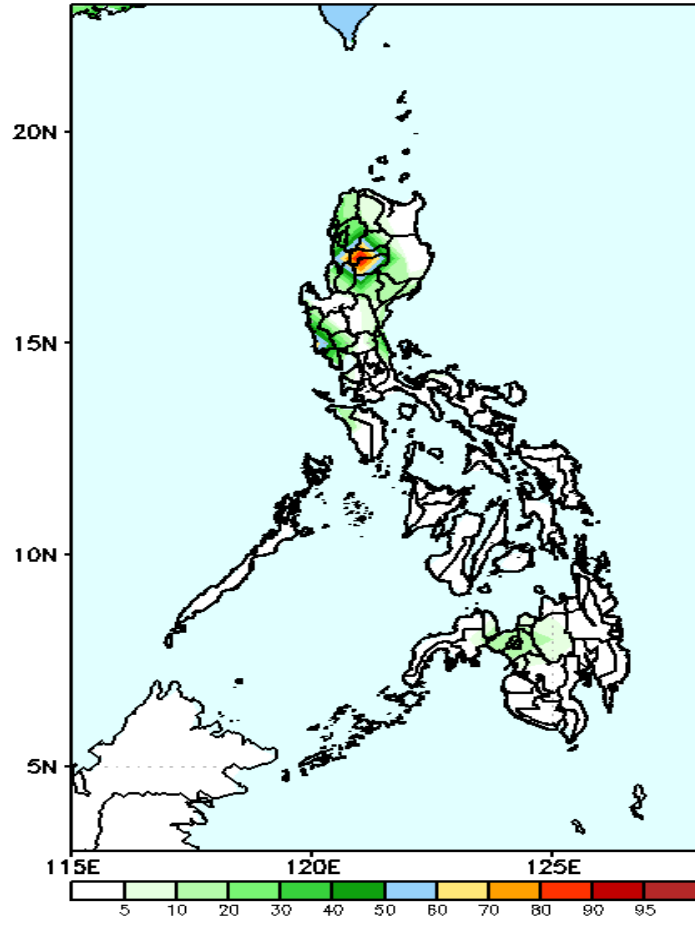
High probability of rainfall to exceed 100mm in Ilocos Region, Cordillera Region, Zambales, Mindoro and in northern and central Mindanao, while less likely for the rest of the country during the forecast period.

GEFS Week-1 Exceedance Prob. > 150mm  
Valid: 20200730 - 20200805



50-95% probability of rainfall to exceed 150mm in Mt. Province, Ifugao, Mindoro and northern Mindanao while less likely for the rest of the country during the forecast period.

GEFS Week-1 Exceedance Prob. > 200mm  
Valid: 20200730 - 20200805

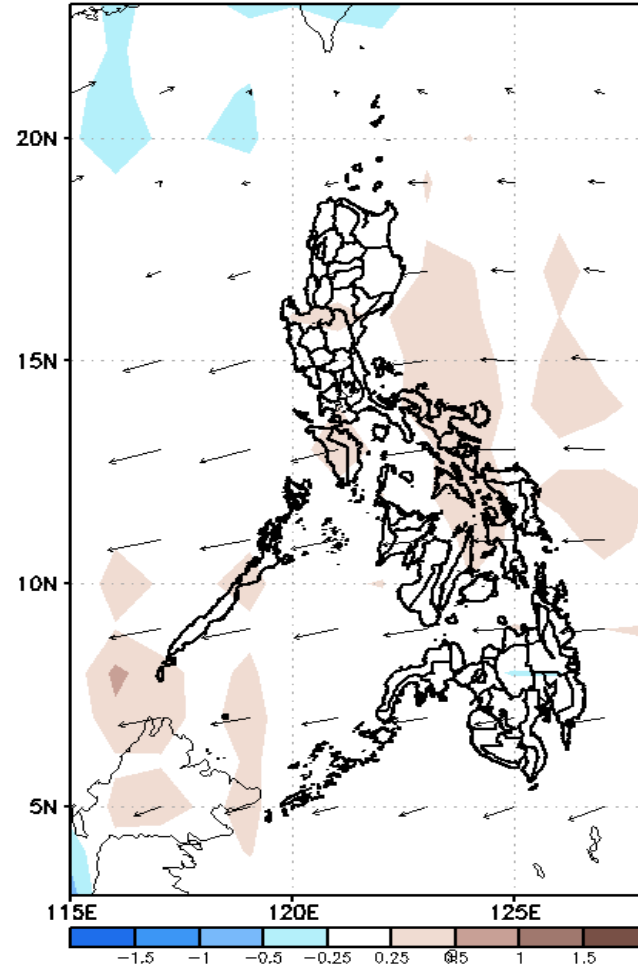
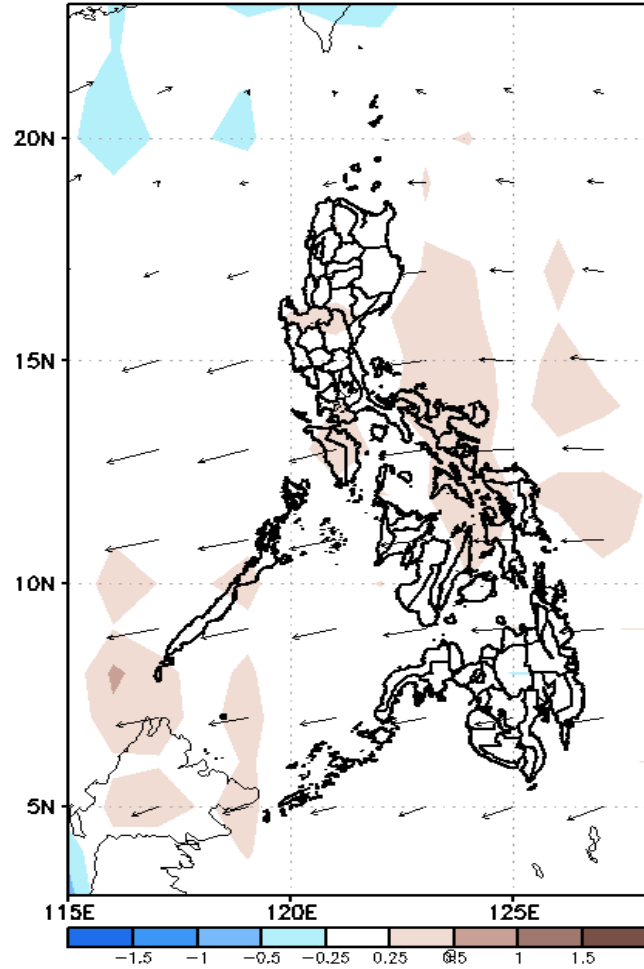


70-95% probability of rainfall to exceed 150mm in Mt. Province and Ifugao while less likely for the rest of the country during the forecast period.

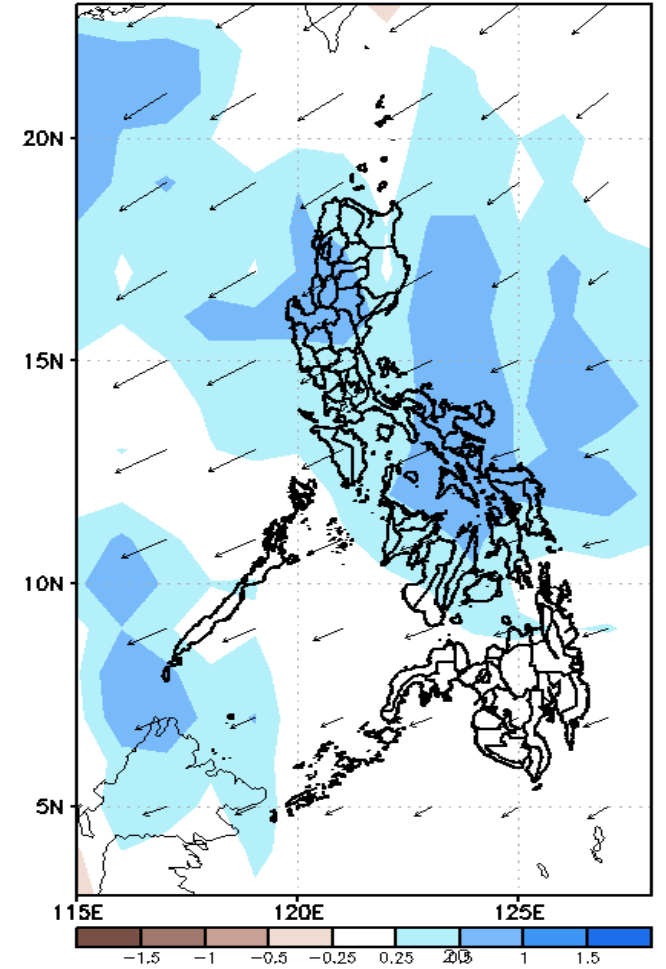
# GEFS Week-2 Forecasts: Divergence & Wind Anomaly

**Week 2: Aug 06-12, 2020**

GEFS Week-2 850-hPa Divergence and Wind Anom. Valid: 20200806 - 20200812



GEFS week-2 200-hPa Divergence and Wind Anom. Valid: 20200806 - 20200812



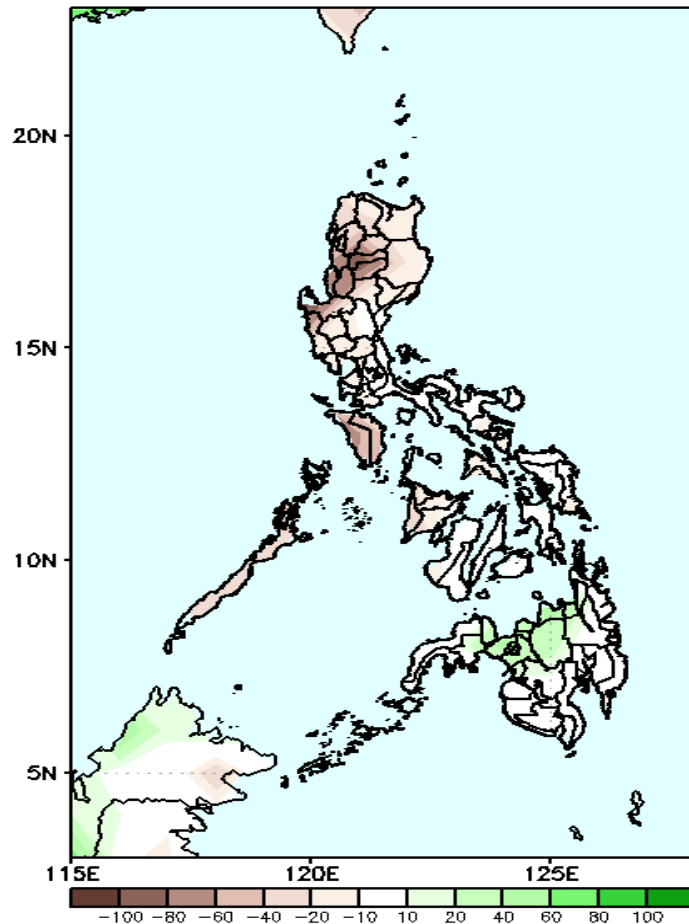
Upper level (200 hPa) Divergence suggest likelihood of precipitation in most parts Luzon and Visayas. Easterlies affecting most parts of the country during the forecast period.



# Precipitation Anomaly and Exceedance Probability > 25/50 mm

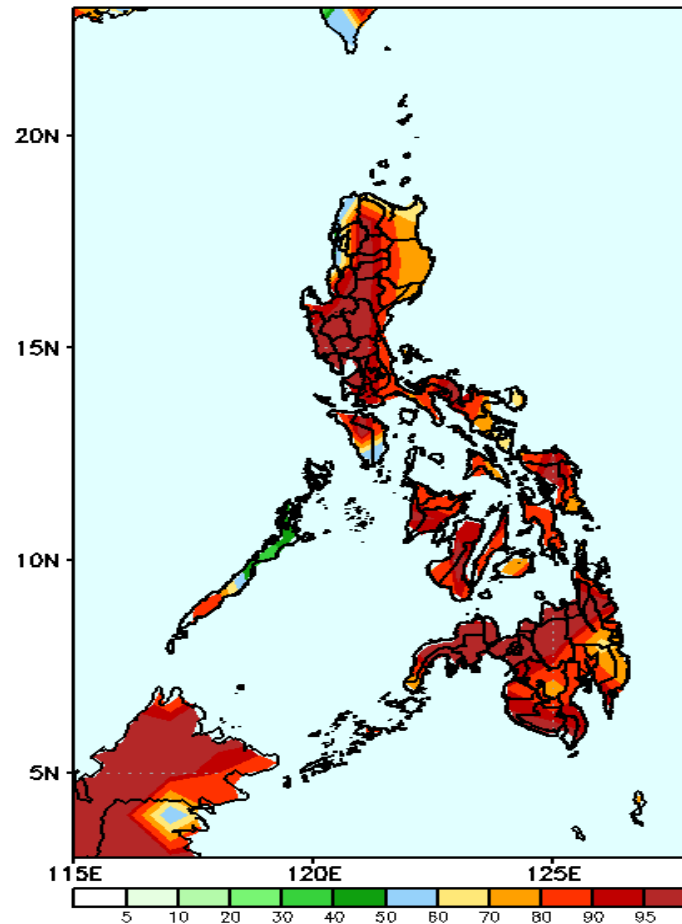
**Week 2: Aug 06-12, 2020**

GEFS Week-2 Precip Anomaly  
Valid: 20200806 – 20200812



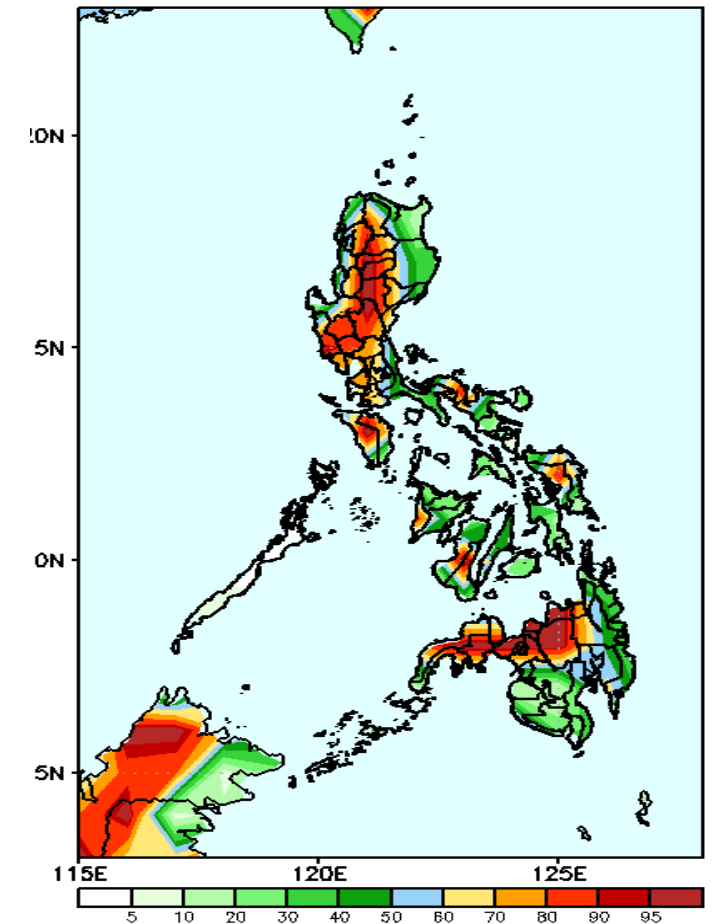
Rainfall deficit of 40-100mm is expected in central and western parts of Luzon and Mindoro while increase of 20-50mm in northern Mindanao during the forecast period.

GEFS Week-2 Exceedance Prob. > 25mm  
Valid: 20200806 – 20200812



High probability of rainfall to exceed 25mm in most parts of the country is expected during the forecast period.

GEFS Week-2 Exceedance Prob. > 50mm  
Valid: 20200806 – 20200812

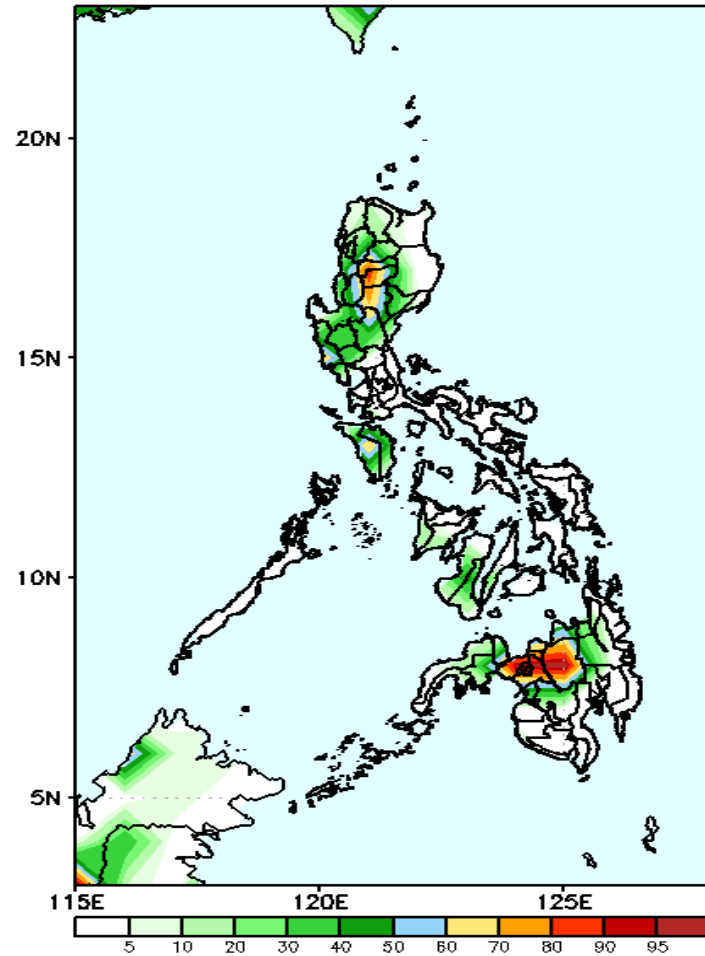


High probability of rainfall to exceed 50mm most parts of Luzon (except Cagayan and Isabela), in Samar provinces and western Visayas and in northern Mindanao and Zamboanga Peninsula while less likely for the rest of the country during the forecast period.

# Exceedance Probability > 100/150/200 mm

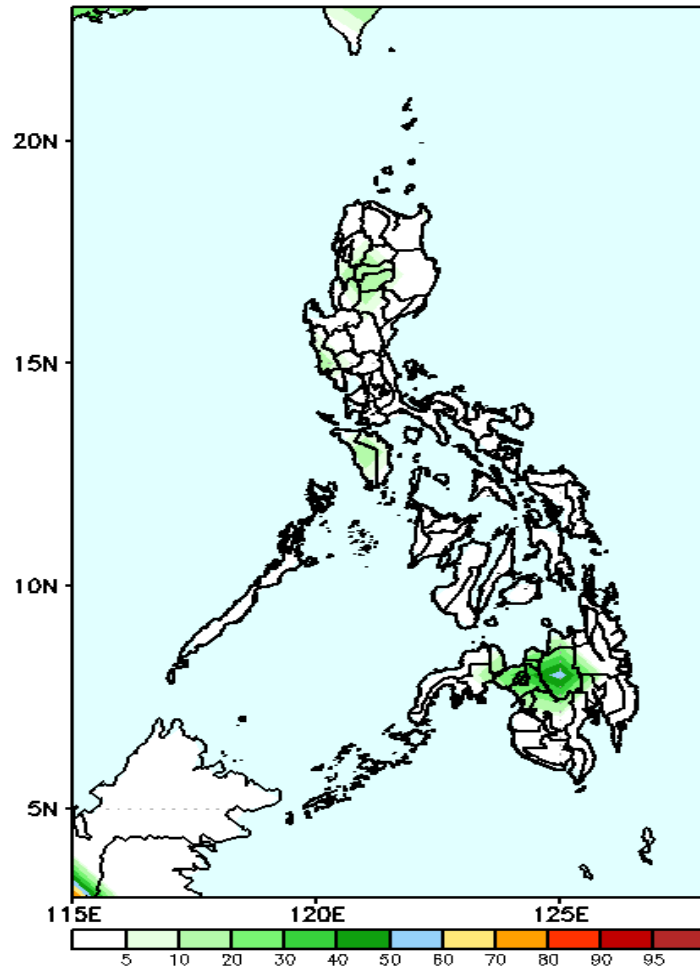
## Week 2: Aug 06-12, 2020

GEFS Week-2 Exceedance Prob. > 100mm  
Valid: 20200806 – 20200812



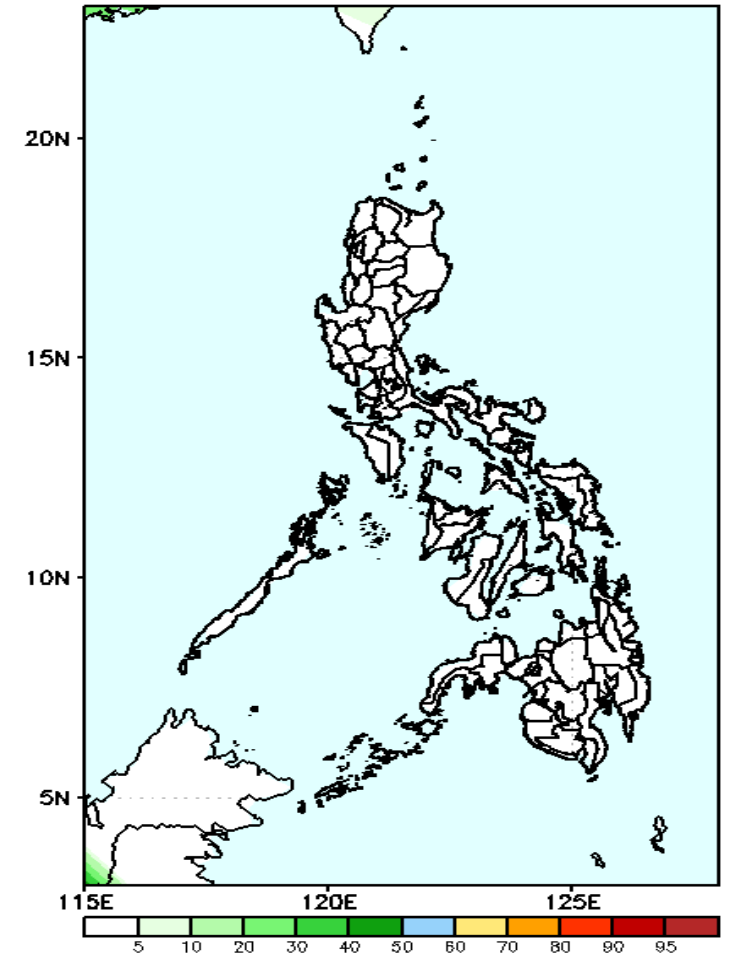
50-95% probability of rainfall to exceed 100mm in Cordillera Region, Mindoro and Northern Mindanao while less likely for the rest of the country during the forecast period.

GEFS Week-2 Exceedance Prob. > 150mm  
Valid: 20200806 – 20200812



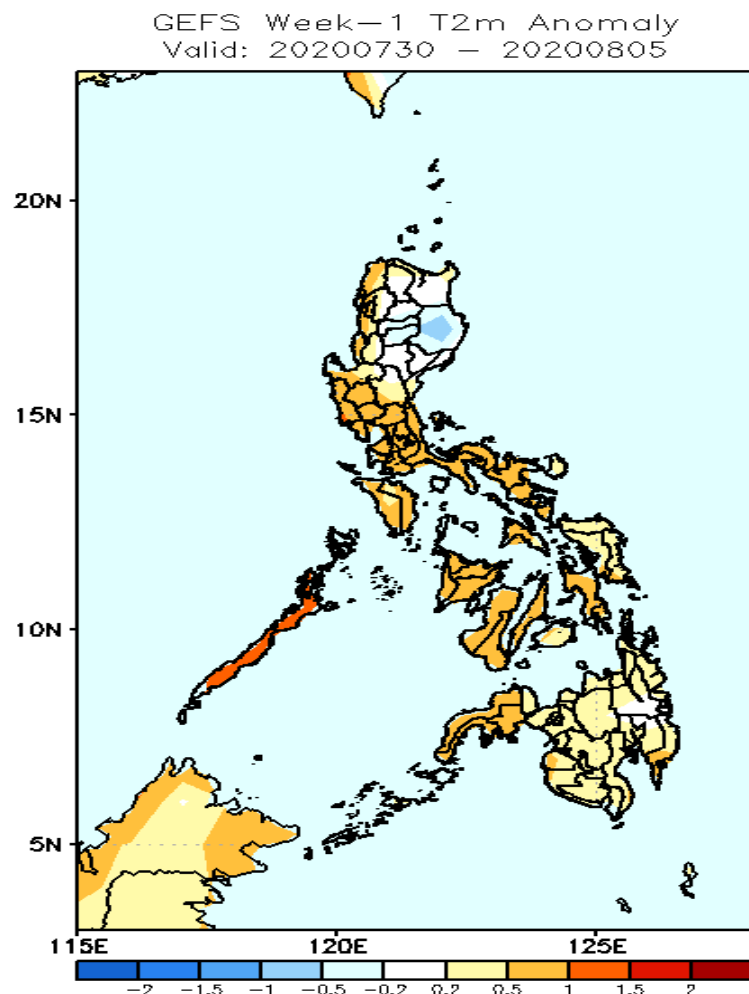
50-80% probability of rainfall to exceed 150mm in Bukidnon while less likely for the rest of the country during the forecast period.

GEFS Week-2 Exceedance Prob. > 200mm  
Valid: 20200806 – 20200812



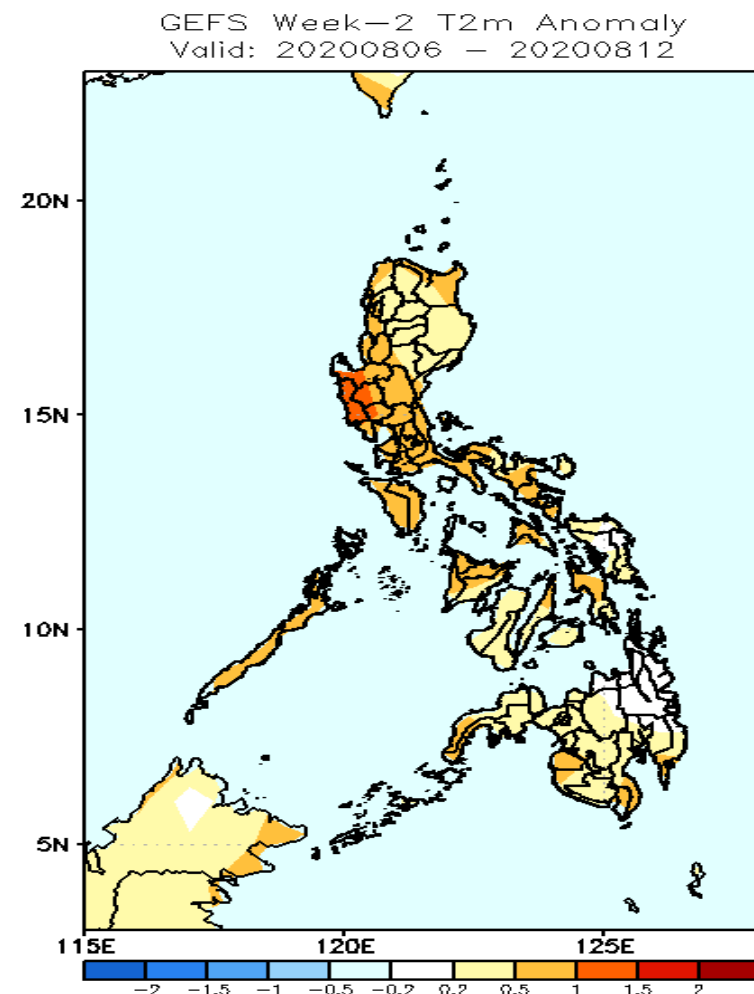
Less probability of rainfall to exceed 200mm in most parts of the country during the forecast period.

# GEFS Week-1 & 2 Forecasts: T2m Anomaly



## 2m Temperature Week 1: July 30-Aug 05, 2020

Slightly warmer to warmer than average surface air temperature will likely experience in western parts of Luzon especially in Palawan and in most parts of Visayas and Zamboanga Peninsula. Moreover, Average surface air temperature is expected in Mindanao while slightly cooler in the eastern section of Luzon during the forecast period.



## 2m Temperature Week 2: Aug 06-12, 2020

Average to slightly warmer than average surface air temperature will likely experience in most parts of the country is expected except in Bataan and Zambales where warmer temperature is expected during the forecast period.