



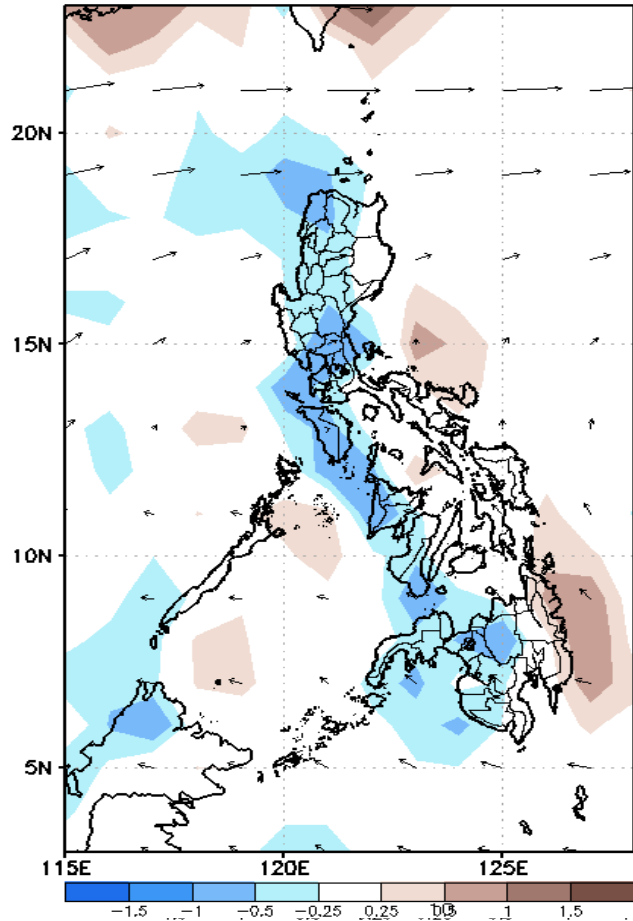
Week 1 & Week 2 Forecast for the Philippines using GEFS Model



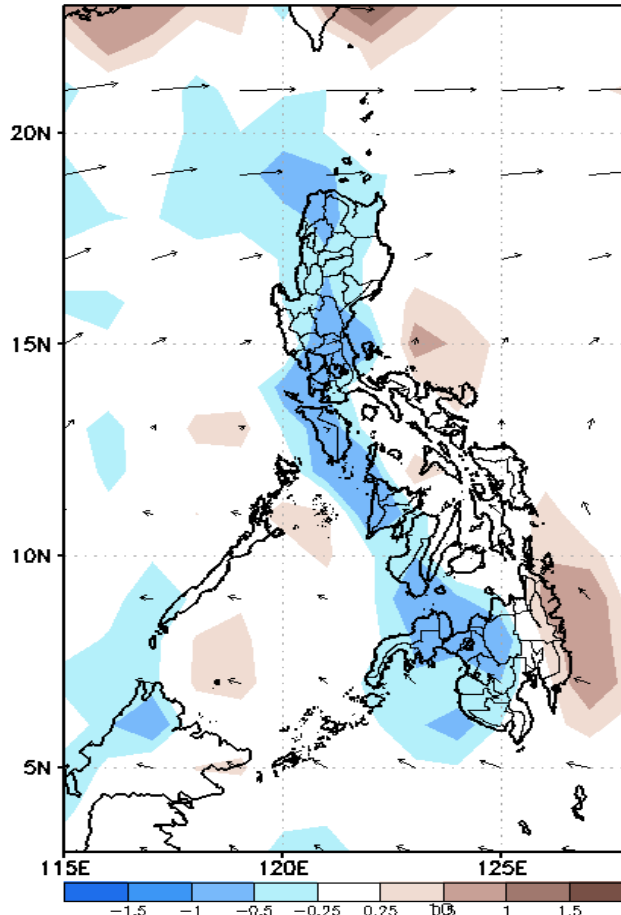
GEFS Week-1 Forecasts: Divergence & Wind Anomaly

Week 1: Jan 31-Feb 06, 2022

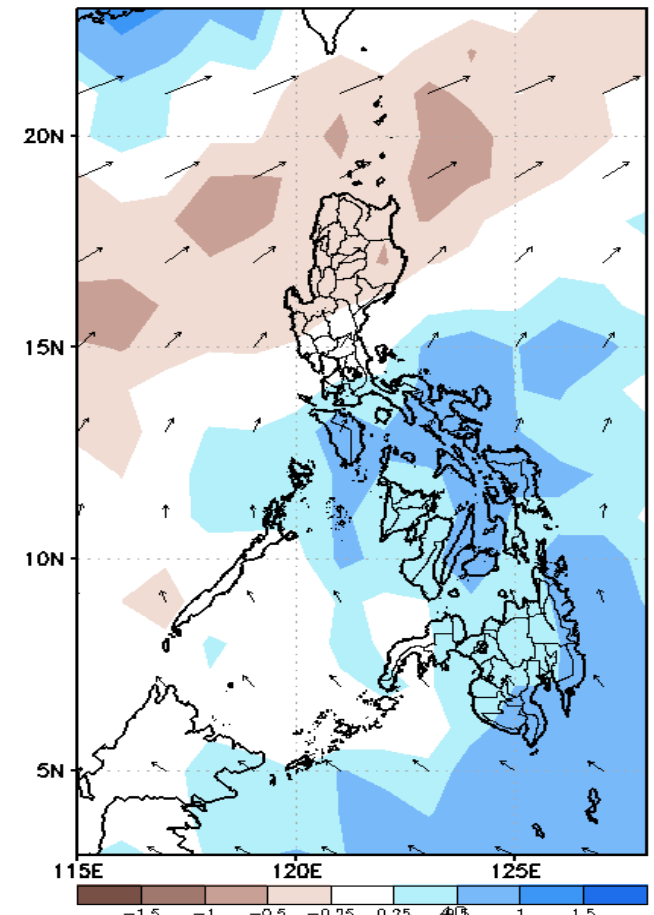
GEFS Week-1 850-hPa Divergence and Wind Anom
Valid: 20220131 - 20220206



GEFS Week-1 700-hPa Divergence and Wind Anoma
Valid: 20220131 - 20220206



GEFS Week-1 200-hPa Divergence and Wind Anom
Valid: 20220131 - 20220206

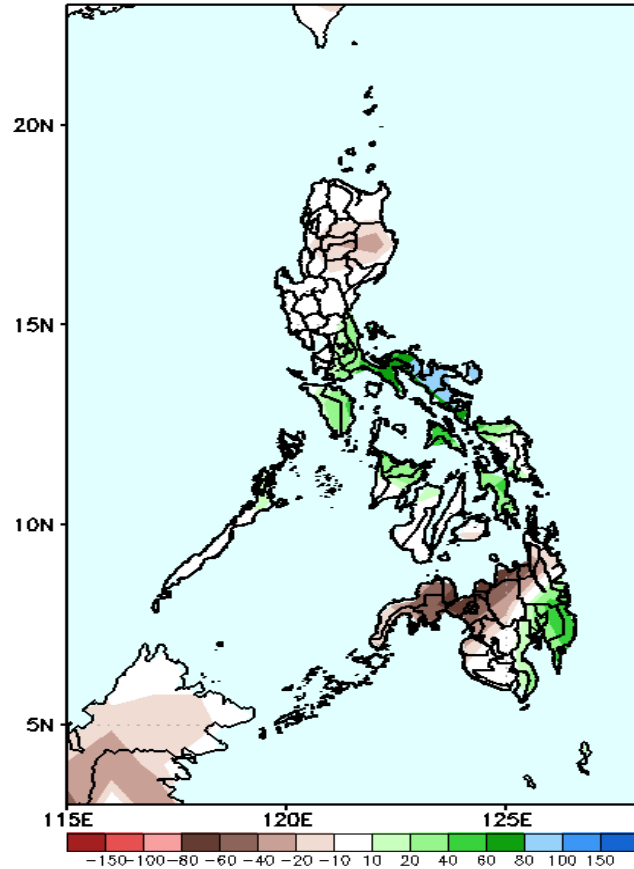


Upper and low level Divergence suggest a likelihood of light to moderate precipitation in most parts of Southern Luzon, Visayas and Mindanao. Northeast Monsoon affecting Northern Luzon while Easterlies affecting the rest of the country during the forecast period.

Precipitation Anomaly and Exceedance Probability > 25/50 mm

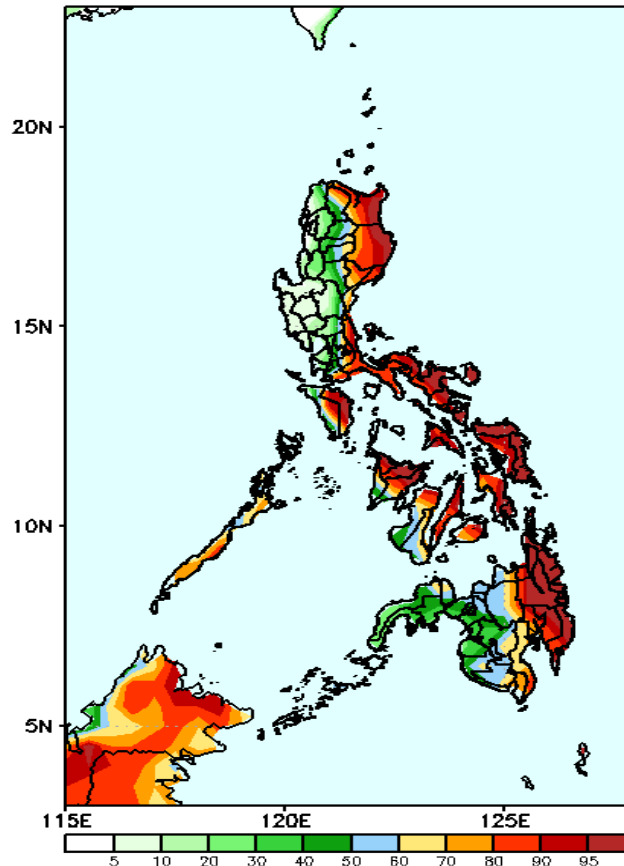
Week 1: Jan 31-Feb 06, 2022

GEFS Week-1 Precip. Anomaly
Valid: 20220131 – 20220206



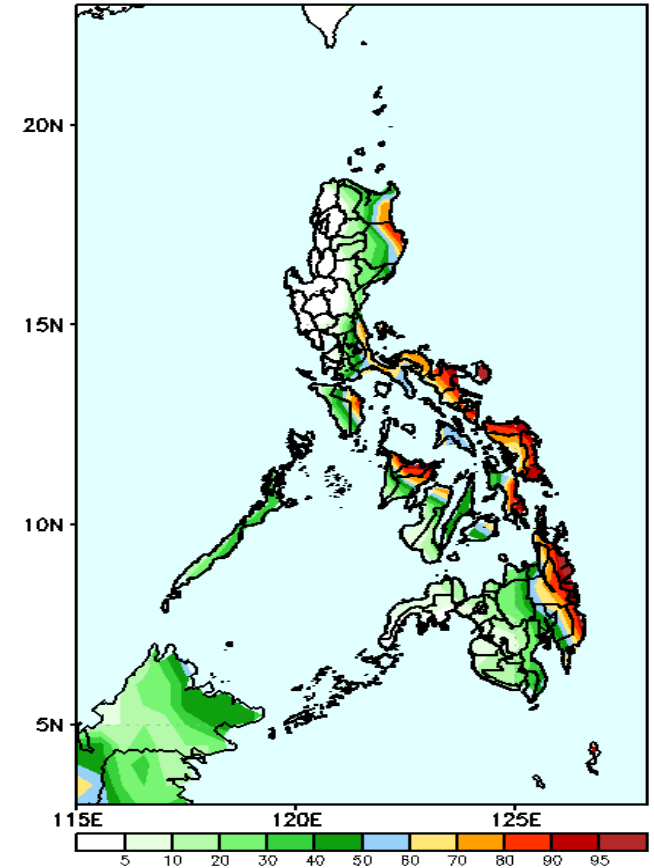
Increase of rainfall of 20-80mm is expected in most parts of Southern Luzon, Visayas and Davao Region and up to 100mm in Bicol Region while rainfall deficit of 20-80mm in Northern Mindanao including Zamboanga Peninsula during the forecast period.

GEFS Week-1 Exceedance Prob. > 25mm
Valid: 20220131 – 20220206



High probability of rainfall to exceed 25mm in the eastern & southern parts of Luzon, most parts of Visayas and in CARAGA & Davao region while less likely for the rest of the country during the forecast period.

GEFS Week-1 Exceedance Prob. > 50mm
Valid: 20220131 – 20220206

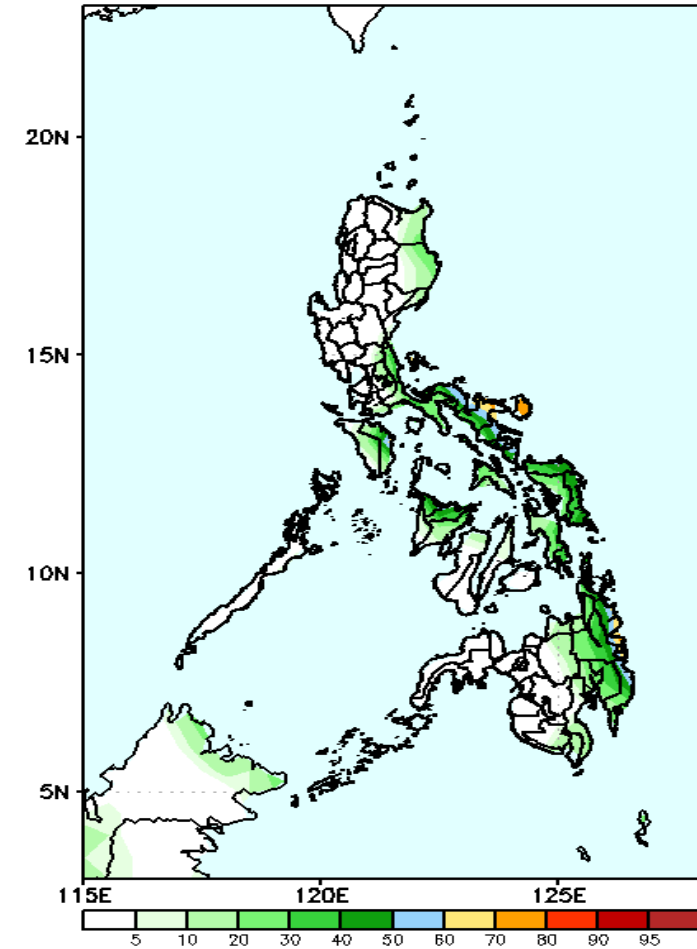


High probability of rainfall to exceed 50mm in the eastern parts of the country, part of Oriental Mindoro and eastern parts of Panay Island, while less likely for the remaining parts of the country during the forecast period.

Exceedance Probability > 100/150/200 mm

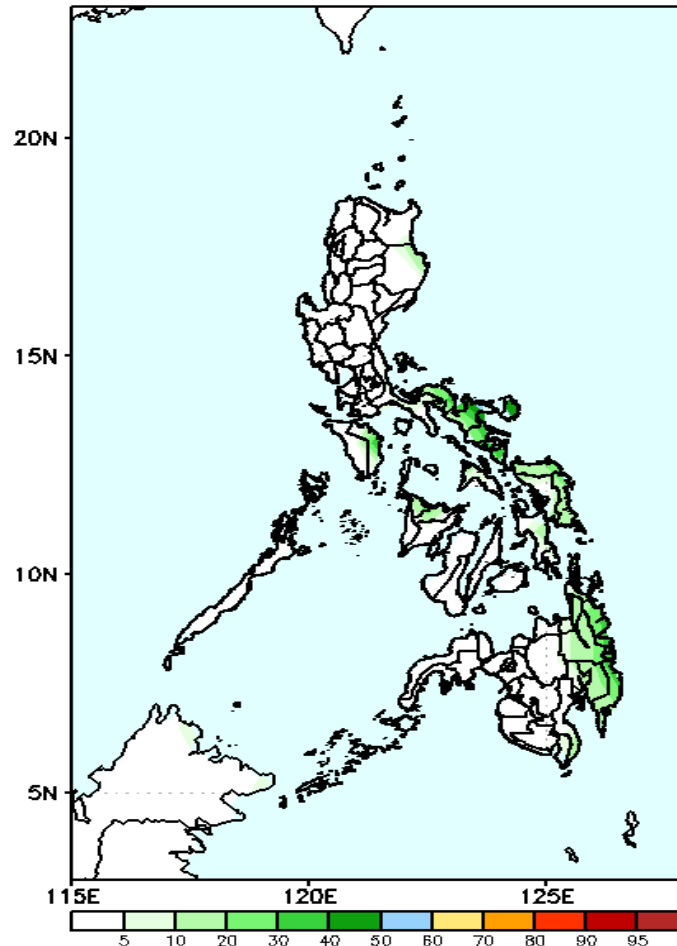
Week 1: Jan 31-Feb 06, 2022

GEFS Week-1 Exceedance Prob. > 100mm
Valid: 20220131 - 20220206



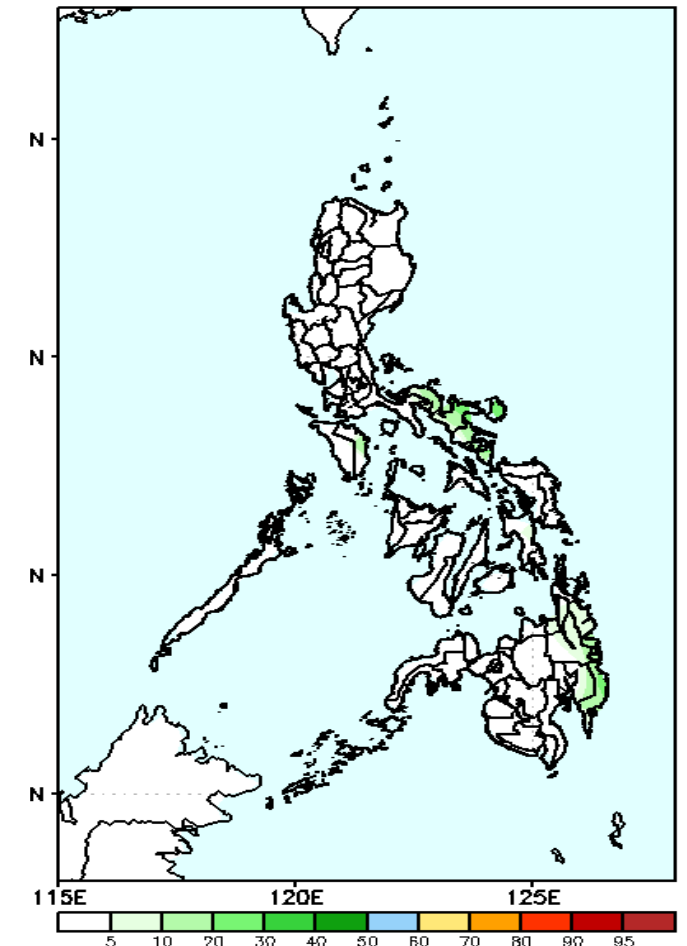
Low probability of rainfall to exceed 100mm in most parts of the country during the forecast period.

GEFS Week-1 Exceedance Prob. > 150mm
Valid: 20220131 - 20220206



Low probability of rainfall to exceed 150mm in most parts of the country during the forecast period.

GEFS Week-1 Exceedance Prob. > 200mm
Valid: 20220131 - 20220206

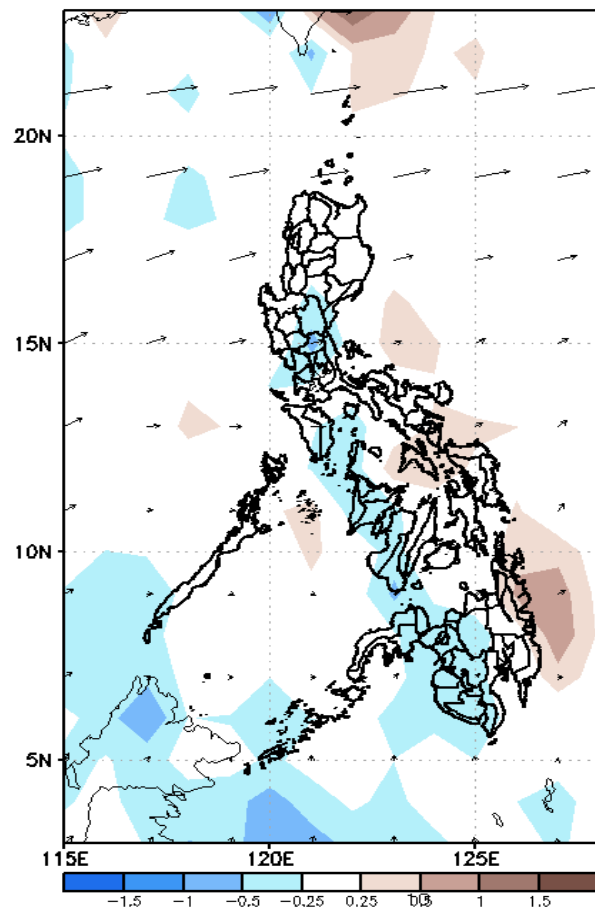


Low probability of rainfall to exceed 200mm in most parts of the country during the forecast period.

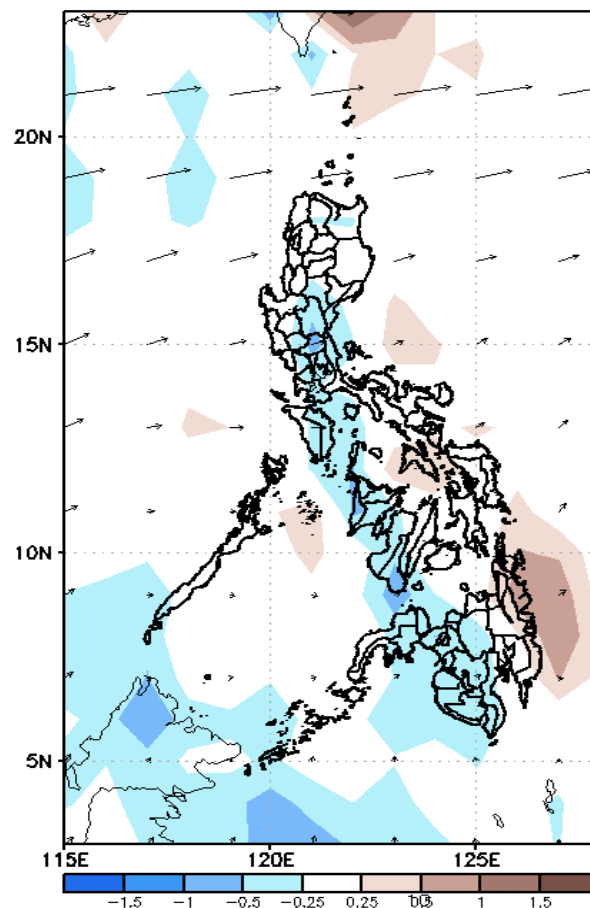
GEFS Week-2 Forecasts: Divergence & Wind Anomaly

Week 2: Feb 07-13, 2022

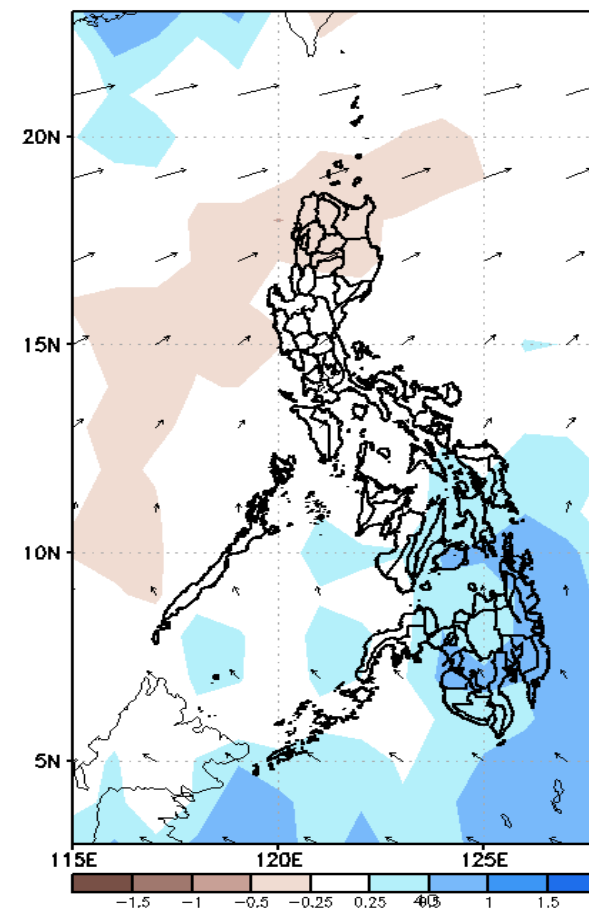
GEFS Week-2 850-hPa Divergence and Wind Anom
Valid: 20220207 - 20220213



GEFS Week-2 700-hPa Divergence and Wind Anom
Valid: 20220207 - 20220213



GEFS week-2 200-hPa Divergence and Wind Anom
Valid: 20220207 - 20220213

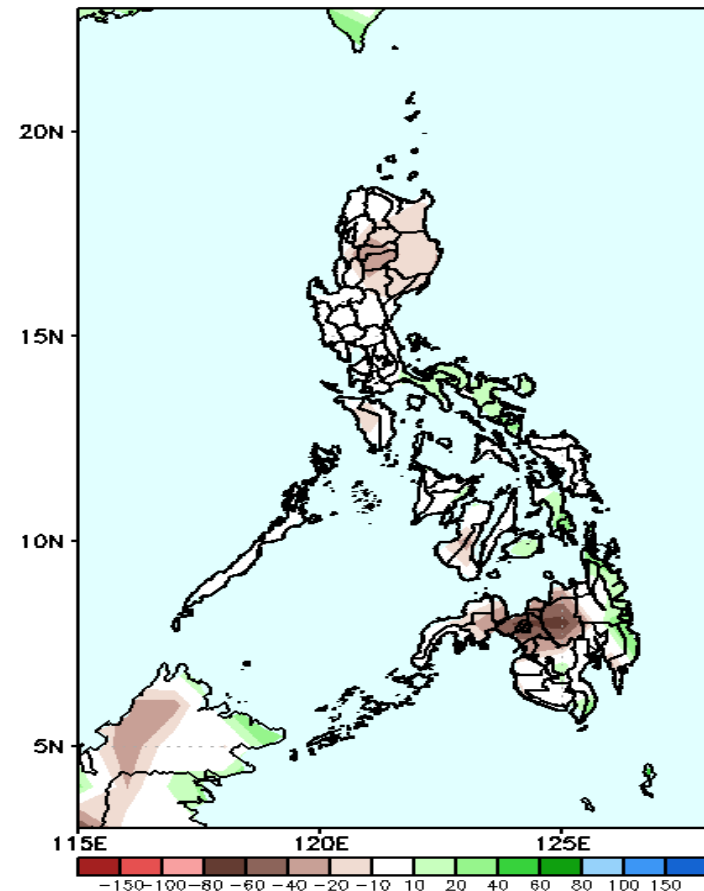


Upper and low level Divergence suggest a likelihood of light to moderate precipitation in some parts of Visayas and most of Mindanao. Easterlies affecting most parts of the country during the forecast period.

Precipitation Anomaly and Exceedance Probability > 25/50 mm

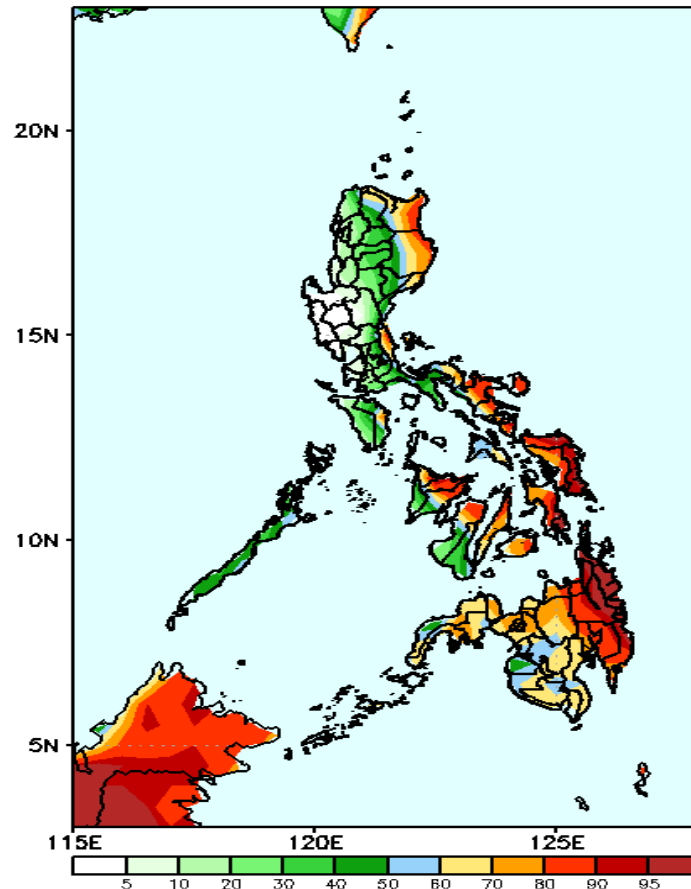
Week 2: Feb 07-13, 2022

GEFS Week-2 Precip Anomaly
Valid: 20220207 - 20220213



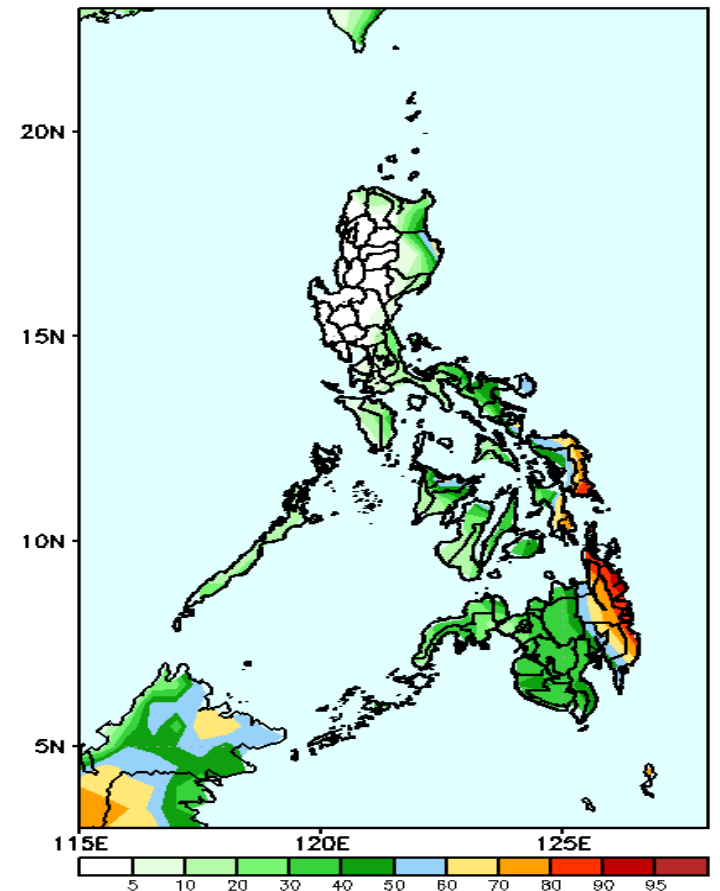
Rainfall deficit of 20-30 mm in some areas in Cagayan Valley and up to 70mm in Northern Mindanao is expected during the forecast period

GEFS Week-2 Exceedance Prob. > 25mm
Valid: 20220207 - 20220213



70-100% probability of rainfall to exceed 25mm in Apayao, Cagayan, Isabela, Rizal and most parts of Bicol Region, Visayas & Mindanao while less likely for the rest of the country during the forecast period.

GEFS Week-2 Exceedance Prob. > 50mm
Valid: 20220207 - 20220213

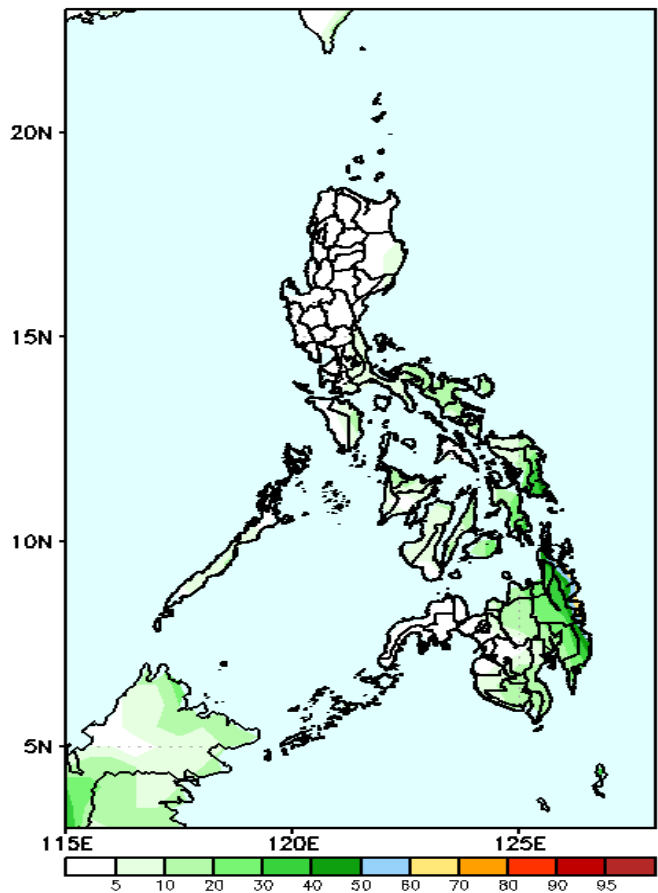


Low probability of rainfall to exceed 50mm in most parts of the country except in Eastern Samar, Southern Leyte and CARAGA & Davao Region during the forecast period.

Exceedance Probability > 100/150/200 mm

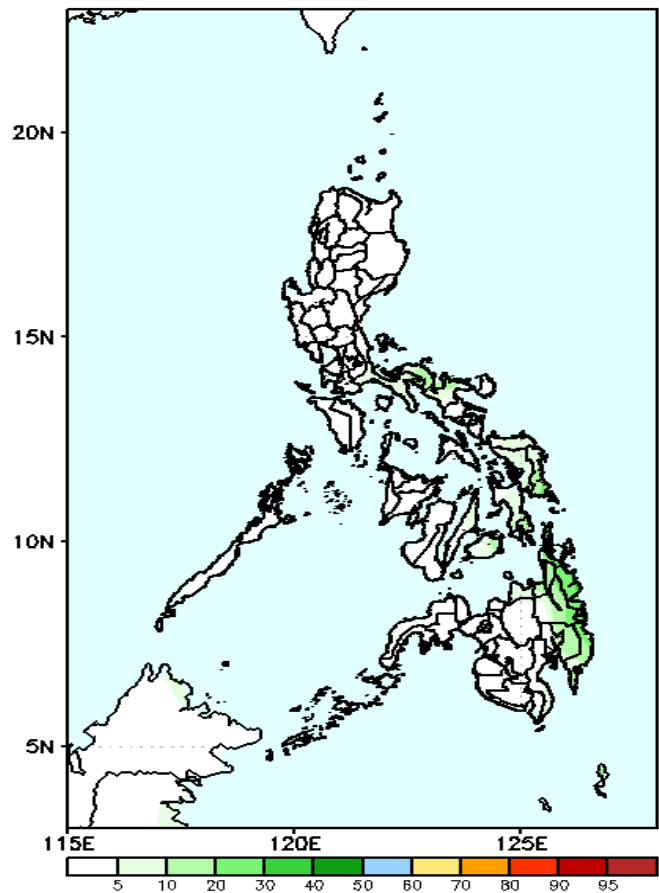
Week 2: Feb 07-13, 2022

GEFS Week-2 Exceedance Prob. > 100mm
Valid: 20220207 – 20220213



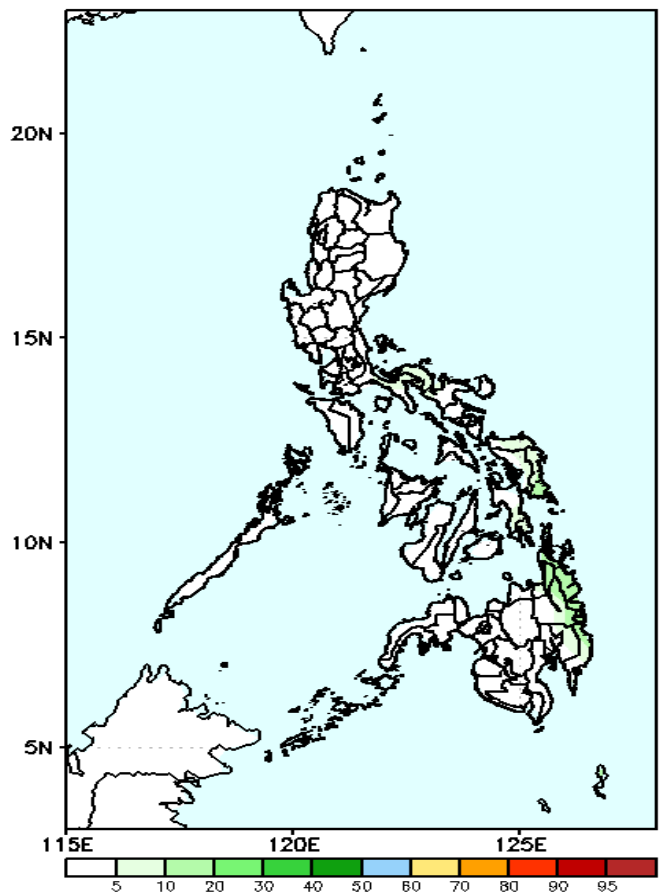
Low probability of rainfall to exceed 100mm in most parts of the country during the forecast period.

GEFS Week-2 Exceedance Prob. > 150mm
Valid: 20220207 – 20220213



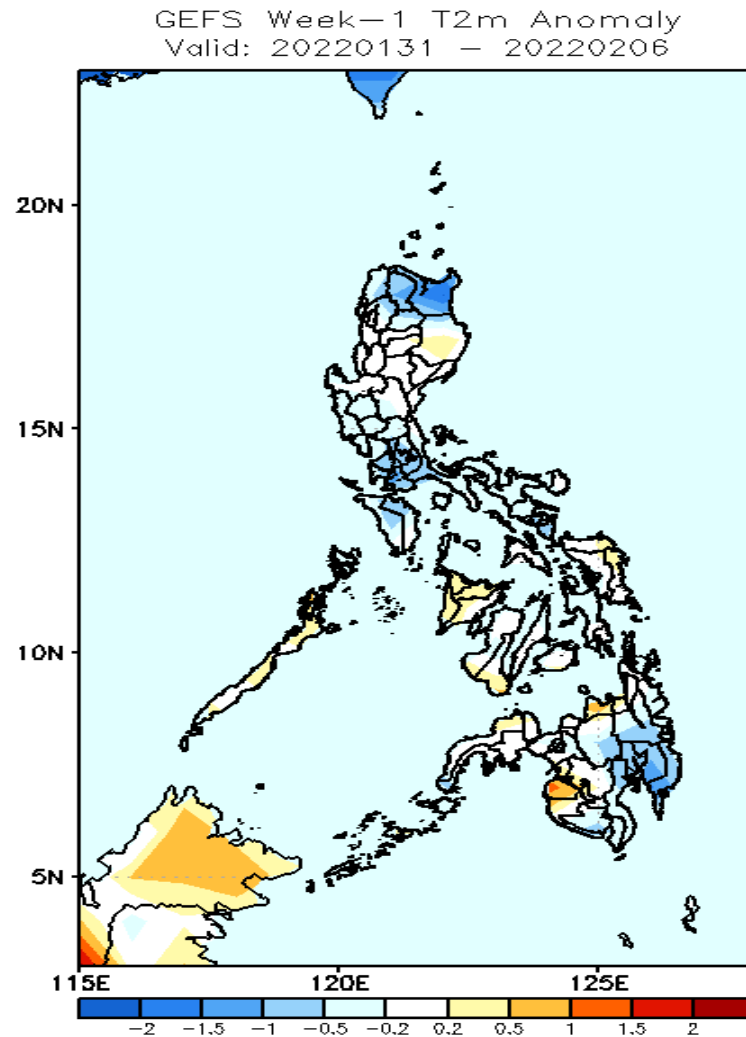
Low probability of rainfall to exceed 150mm in most parts of the country during the forecast period.

GEFS Week-2 Exceedance Prob. > 200mm
Valid: 20220207 – 20220213



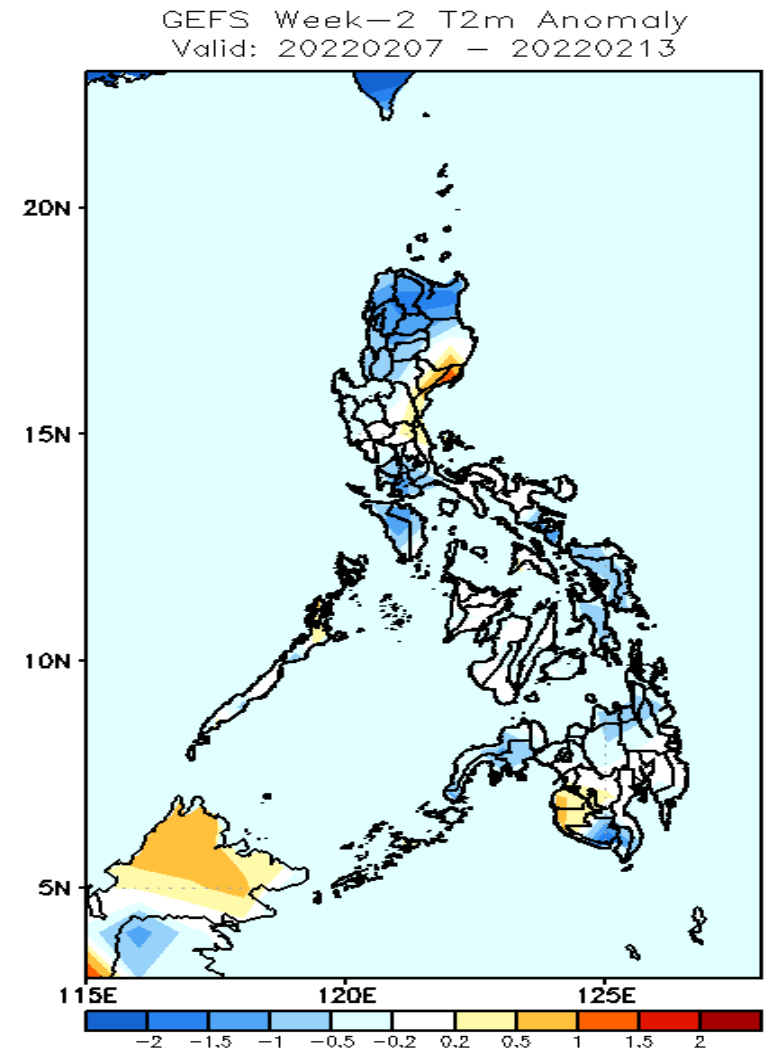
Low probability of rainfall to exceed 200mm in most parts of the country during the forecast period.

GEFS Week-1 & 2 Forecasts: T2m Anomaly



2m Temperature Week 1: Jan 31-Feb 06, 2022

Slightly cooler to cooler than average surface air temperature will likely experience in most parts of the country during the forecast period.



2m Temperature Week 2: Feb 07-13, 2022

Slightly cooler to cooler than average surface air temperature will likely experience in most parts of the country during the forecast period.