



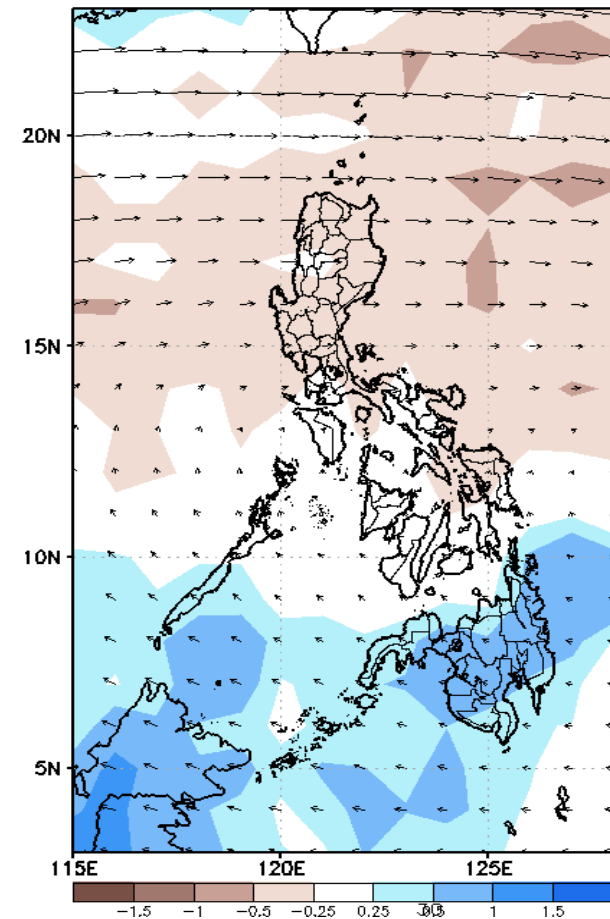
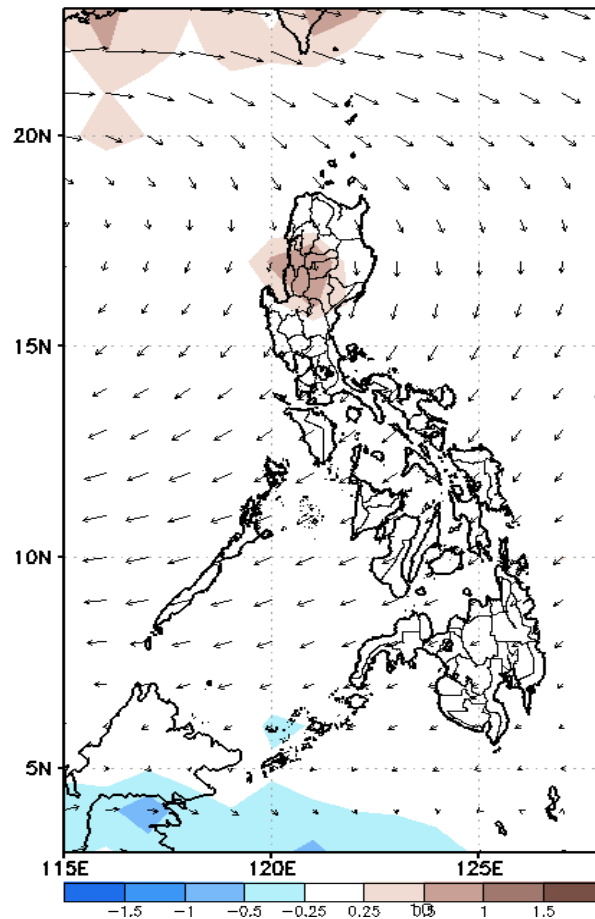
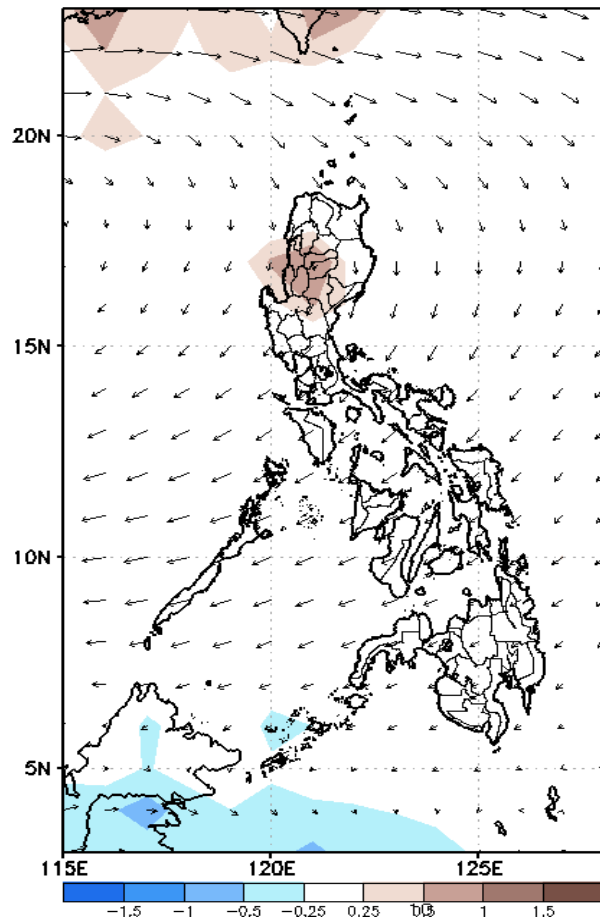
Week 1 & Week 2 Forecast for the Philippines using GEFS Model



GEFS Week-1 Forecasts: Wind Anomaly Forecast

Week 1: Mar 31-Apr 06, 2023

GEFS Week-1 850-hPa Divergence and Wind AnomGEFS Week-1 700-hPa Divergence and Wind AnomGEFS Week-1 200-hPa Divergence and Wind Anom
Valid: 20230331 - 20230406



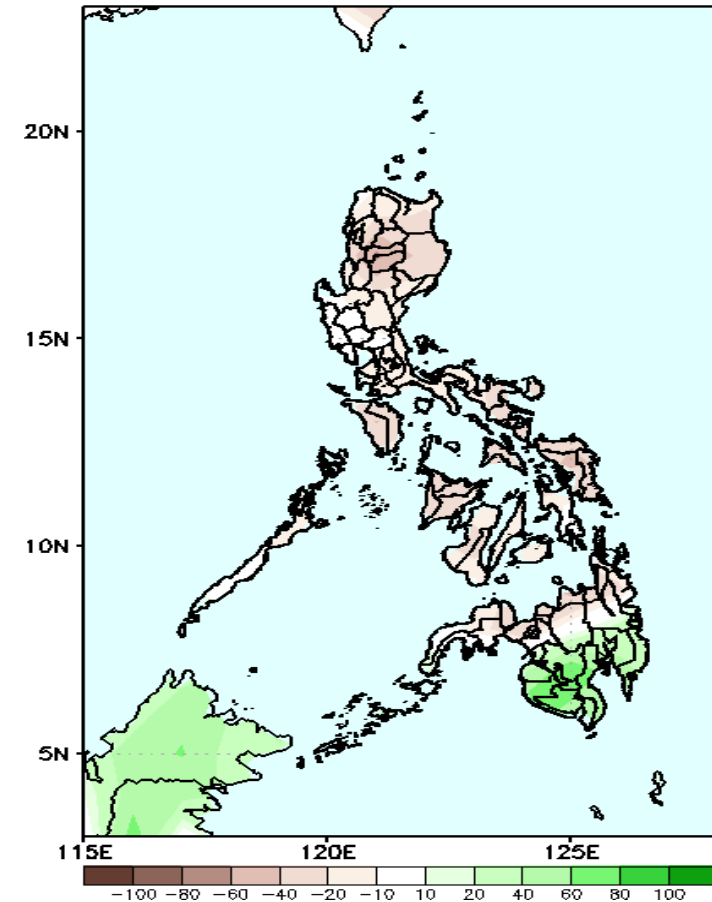
Easterlies is forecasted to affect most parts of the country; expect dry and hot weather during the forecast period.

Precipitation Anomaly and Exceedance Probability > 25/50 mm

- Very high probability
- High Probability
- Moderate Probability
- Low Probability

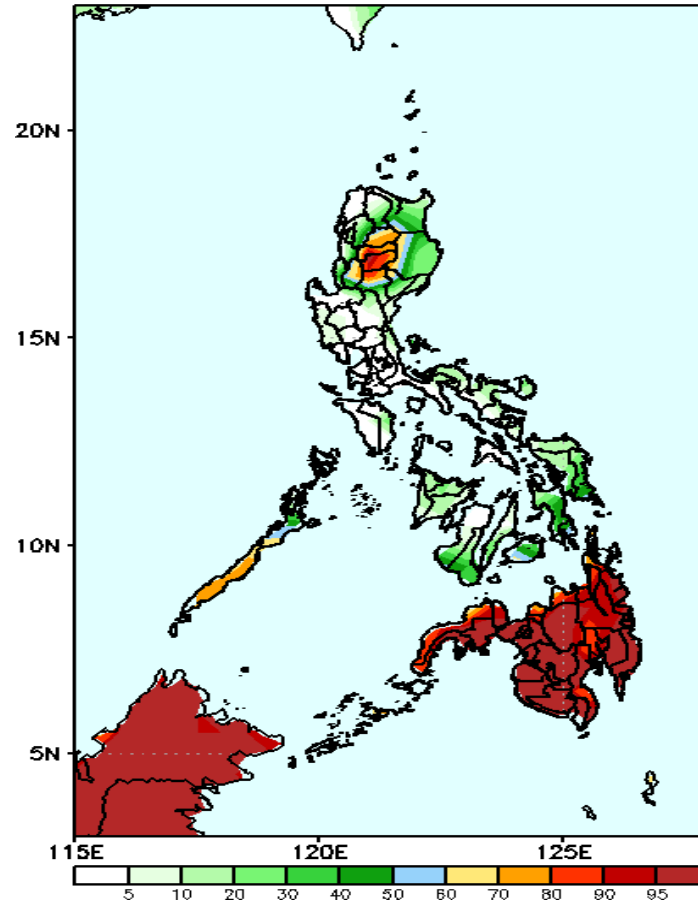
Week 1: Mar 31-Apr 06, 2023

GEFS Week-1 Precip Anomaly
Valid: 20230331 - 20230406



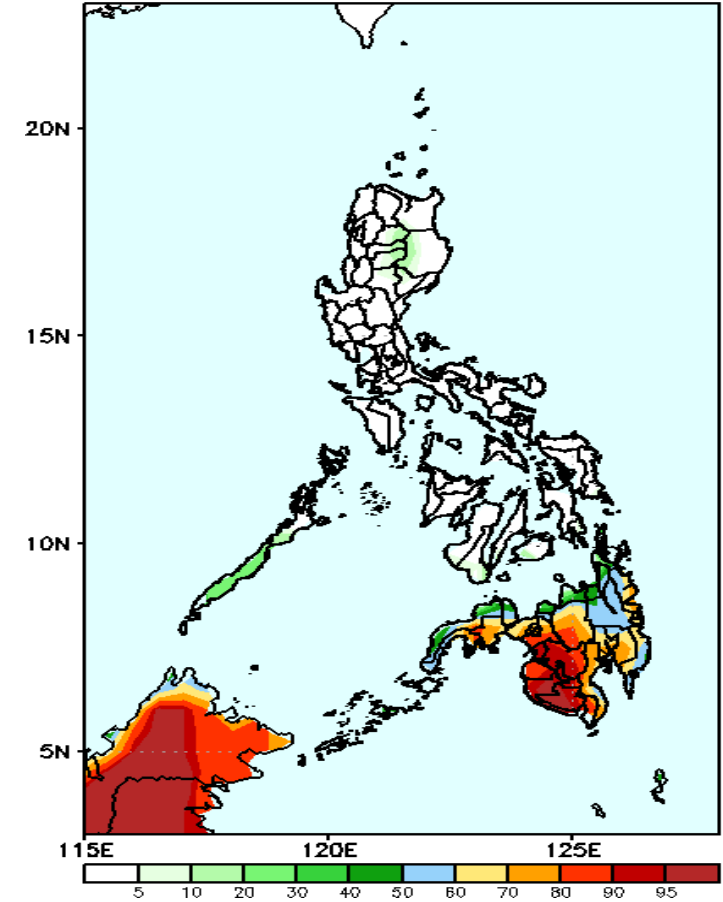
Rainfall deficit of 20-60mm is expected in most parts of Luzon, Visayas and northern Mindanao while the rest of Mindanao will likely have 40-90mm increase of rainfall during the forecast period.

GEFS Week-1 Exceedance Prob. > 25mm
Valid: 20230331 - 20230406



High to a very high probability to exceed 25mm of rainfall in Mindanao and portions of Cordillera Administrative Region, and Palawan while low to moderate chance over the rest of the country.

GEFS Week-1 Exceedance Prob. > 50mm
Valid: 20230331 - 20230406



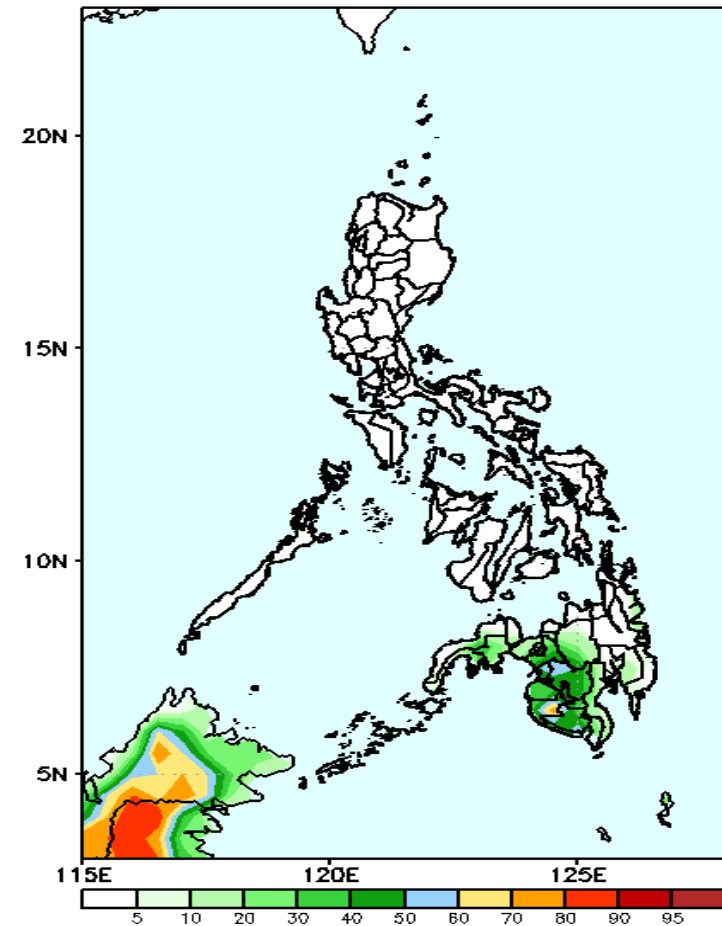
High to a very high probability to exceed 50mm of rainfall over most parts of Mindanao while low chance over the rest of the country.



Exceedance Probability > 100/150/200 mm

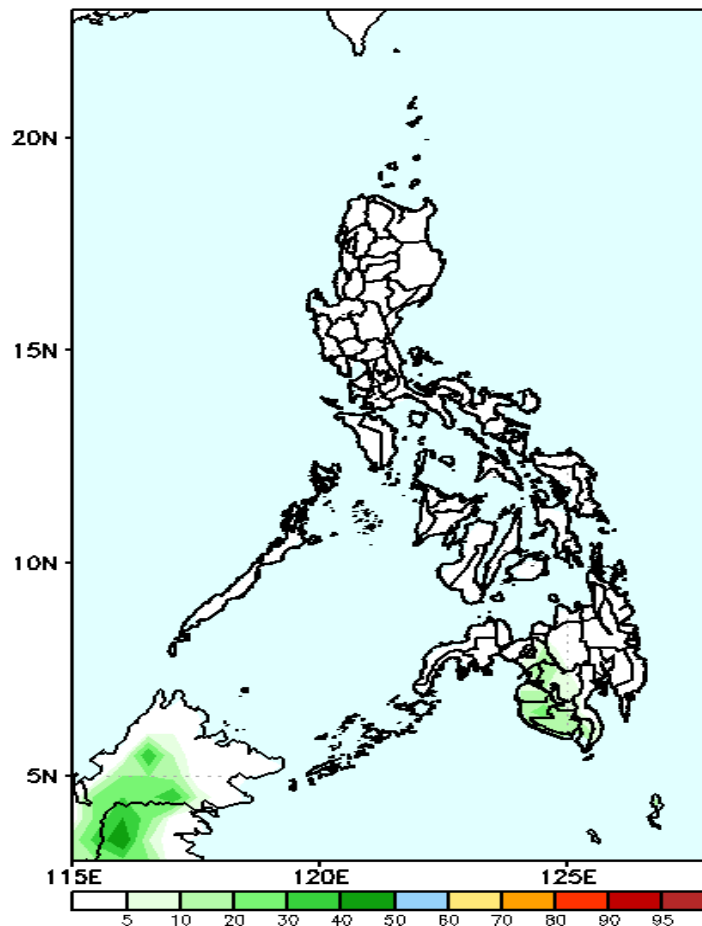
Week 1: Mar 31-Apr 06, 2023

GEFS Week-1 Exceedance Prob. > 100mm
Valid: 20230331 - 20230406



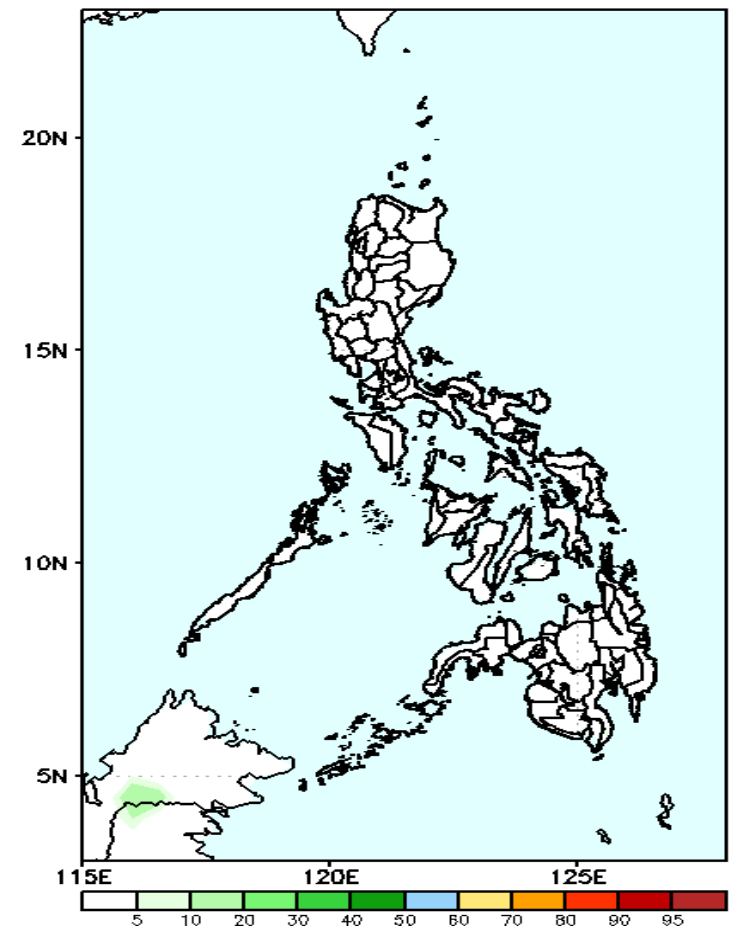
Moderate to a high probability to exceed 100mm of rainfall over portions of BARM and SOCCSKSARGEN while low likelihood over the rest of the country.

GEFS Week-1 Exceedance Prob. > 150mm
Valid: 20230331 - 20230406



Low probability of rainfall to exceed 150mm in most parts of the country during the forecast period.

GEFS Week-1 Exceedance Prob. > 200mm
Valid: 20230331 - 20230406

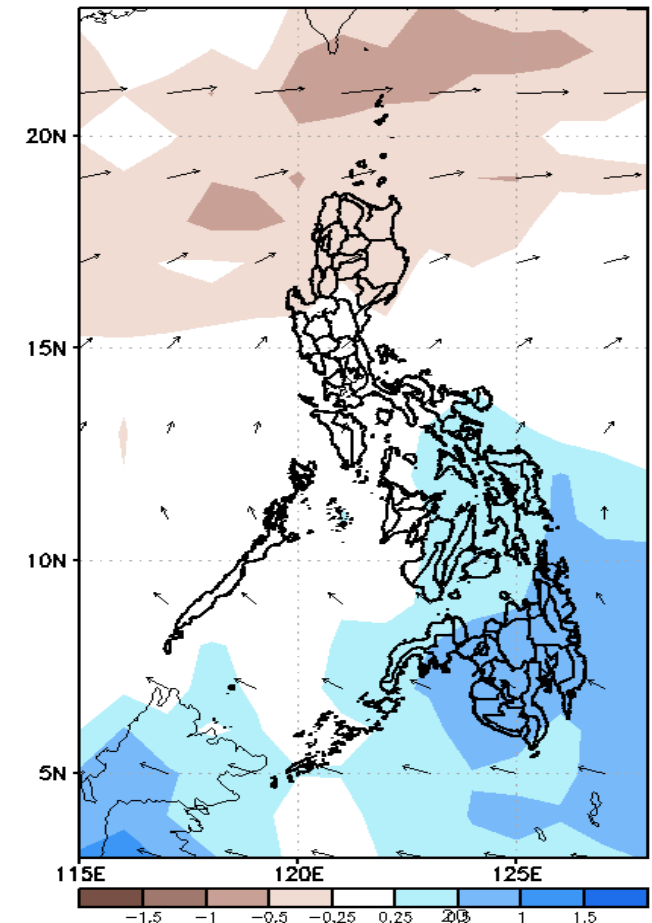
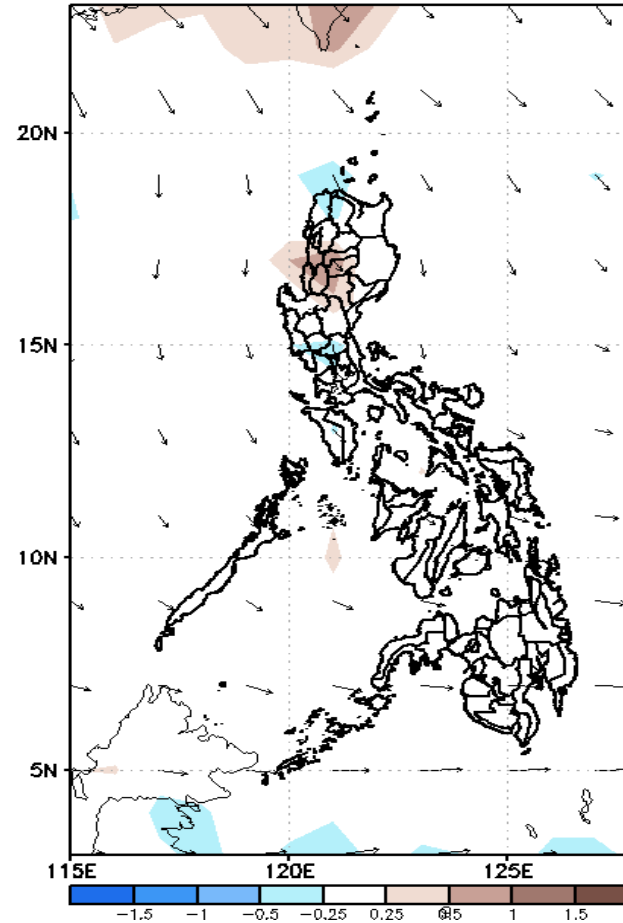
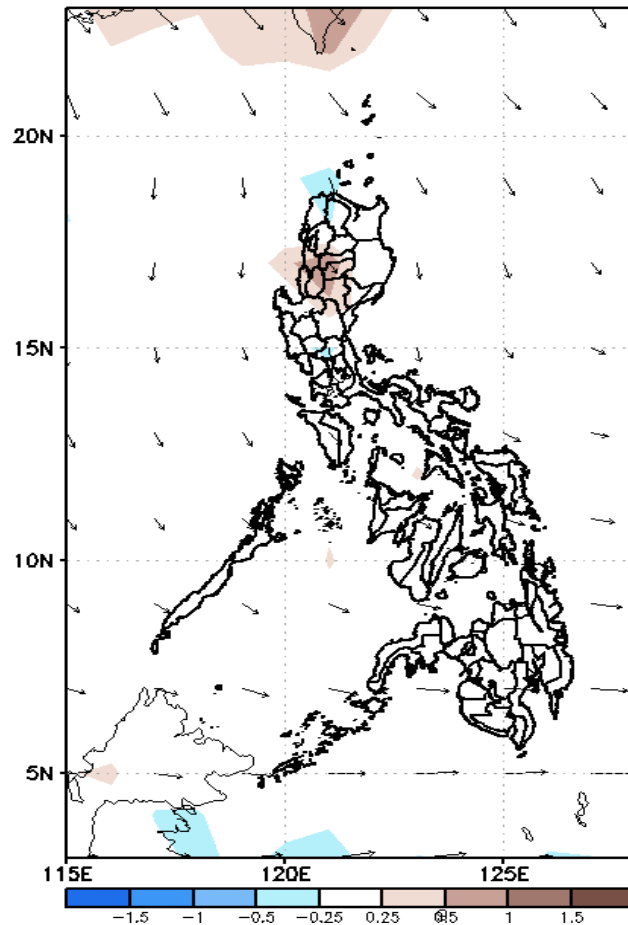


Low probability of rainfall to exceed 200mm in most parts of the country during the forecast period.

GEFS Week-2 Forecasts: Wind Anomaly Forecast

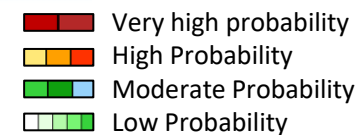
Week 2: Apr 07-13, 2023

GEFS Week-2 850-hPa Divergence and Wind Anom, GEFS Week-2 700-hPa Divergence and Wind Anom, GEFS week-2 200-hPa Divergence and Wind Anom
Valid: 20230407 - 20230413



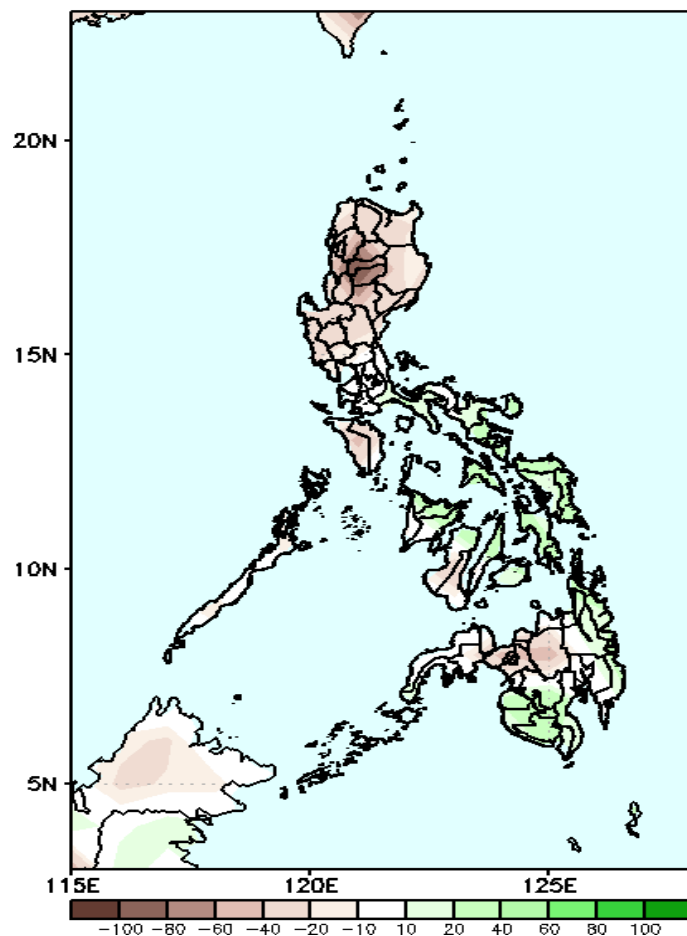
Easterlies is forecasted to affect most parts of the country; expect dry and hot weather during the forecast period.

Precipitation Anomaly and Exceedance Probability > 25/50 mm



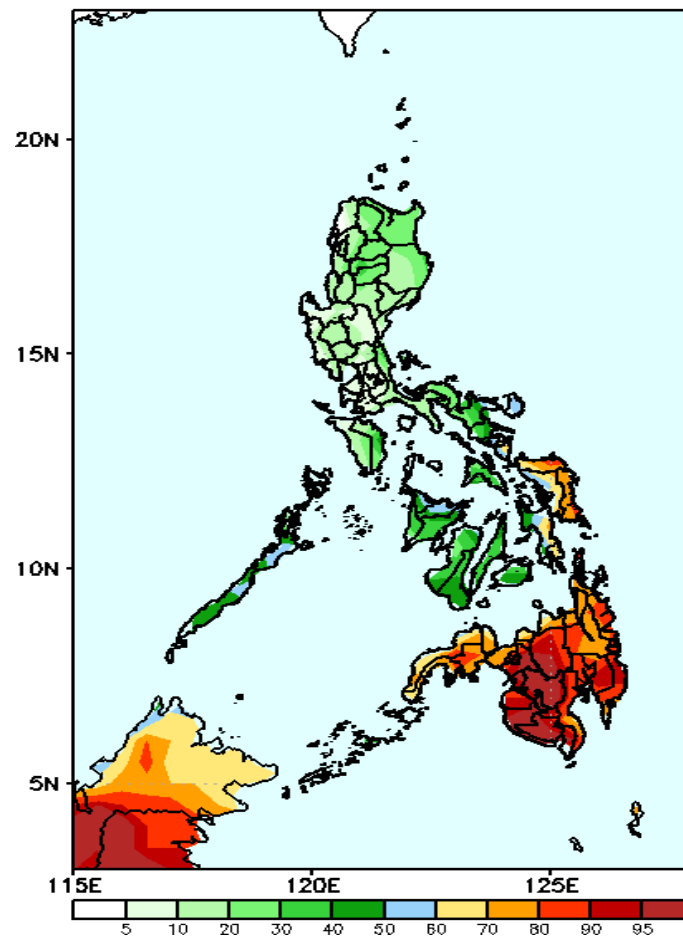
Week 2: Apr 07-13, 2023

GEFS Week-2 Precip Anomaly
Valid: 20230407 - 20230413



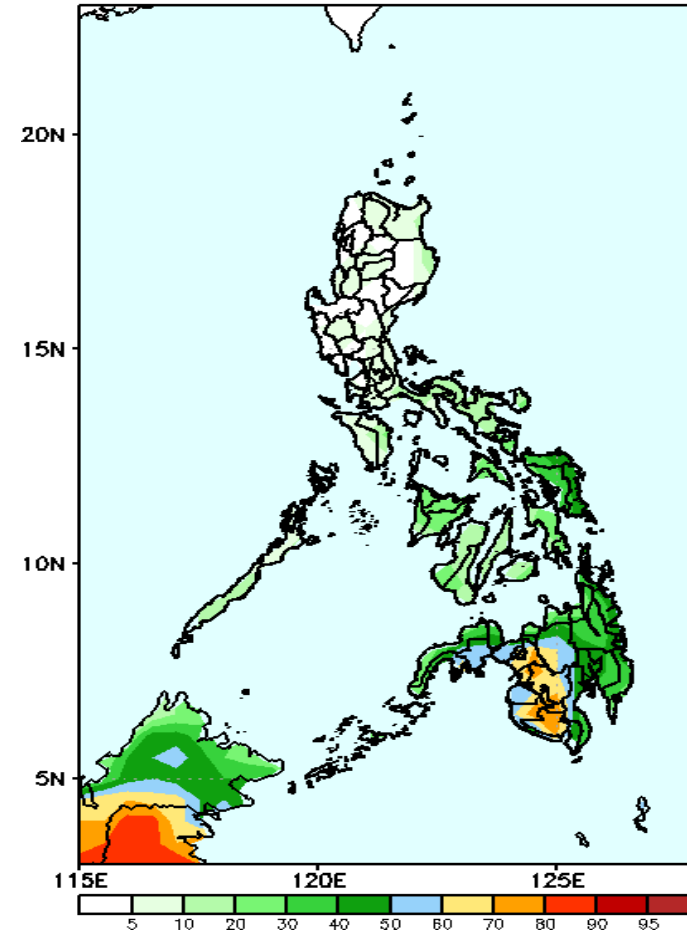
Rainfall deficit of 20-80mm is expected in most parts of Luzon, some areas in western Visayas and northern Mindanao while the rest of the country will likely have 40-80mm increase of rainfall during the forecast period.

GEFS Week-2 Exceedance Prob. > 25mm
Valid: 20230407 - 20230413



High to a very high probability to exceed 25mm of rainfall in Mindanao, Eastern Samar, and portions of Leyte Provinces while low to moderate chance over the rest of the country.

GEFS Week-2 Exceedance Prob. > 50mm
Valid: 20230407 - 20230413



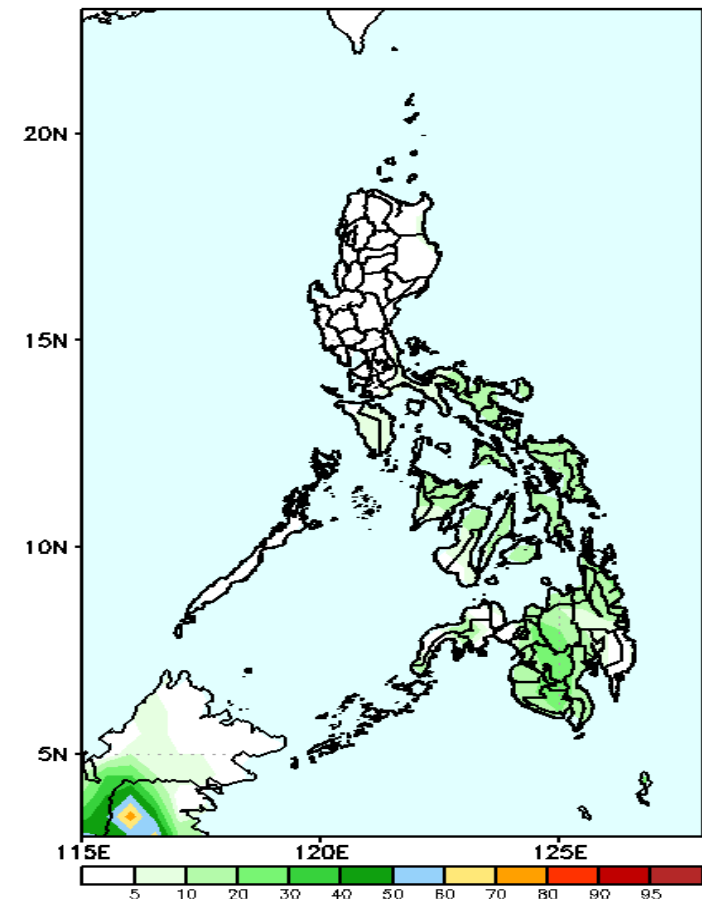
Moderate to a high probability to exceed 50mm of rainfall over Mindanao and Samar Provinces while low likelihood over the rest of the country.



Exceedance Probability > 100/150/200 mm

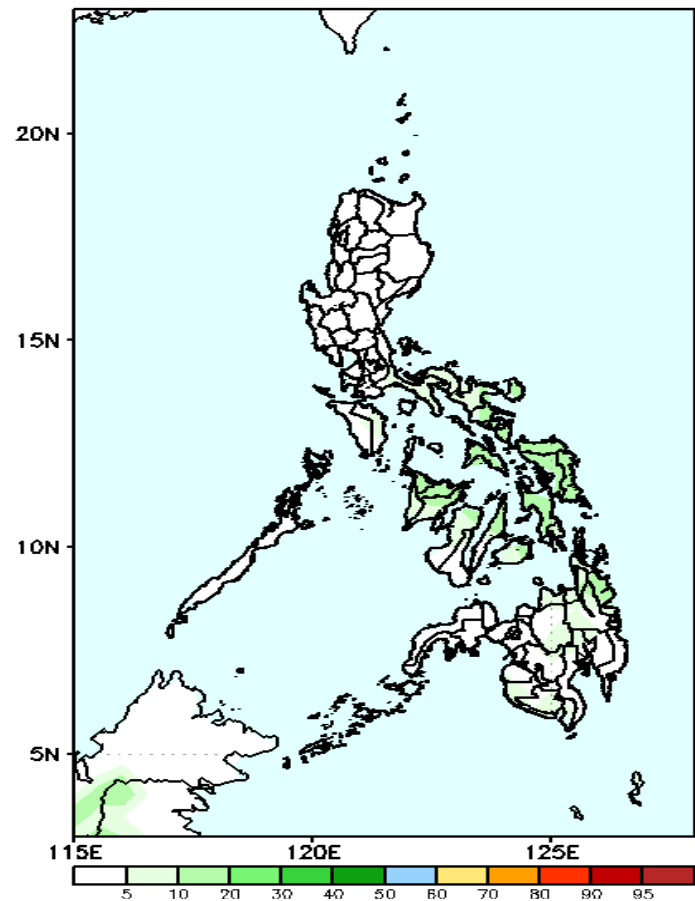
Week 2: Apr 07-13, 2023

GEFS Week-2 Exceedance Prob. > 100mm
Valid: 20230407 – 20230413



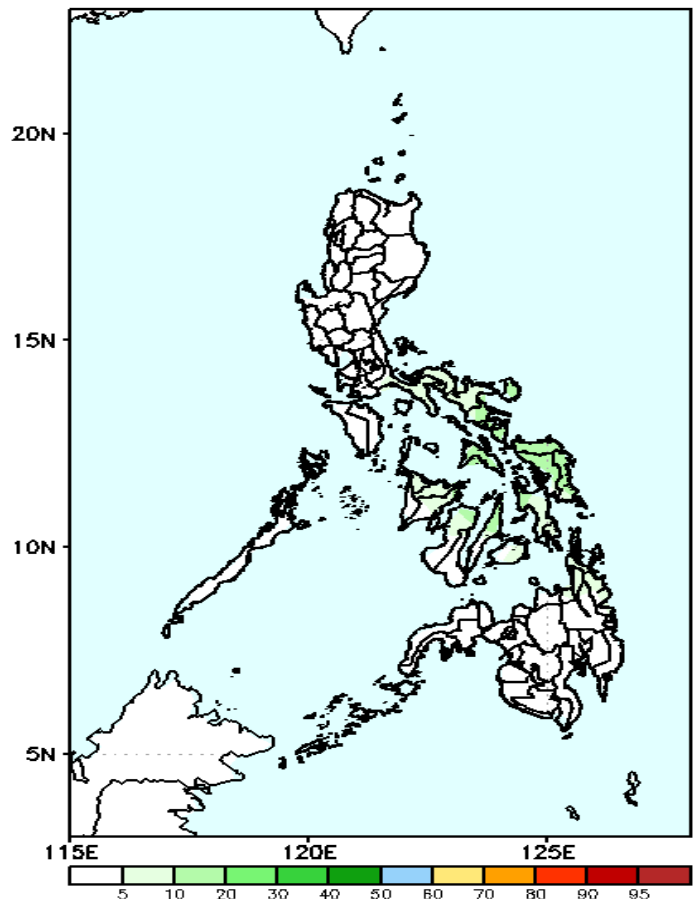
Low probability of rainfall to exceed 100mm in most parts of the country during the forecast period.

GEFS Week-2 Exceedance Prob. > 150mm
Valid: 20230407 – 20230413



Low probability of rainfall to exceed 150mm in most parts of the country during the forecast period.

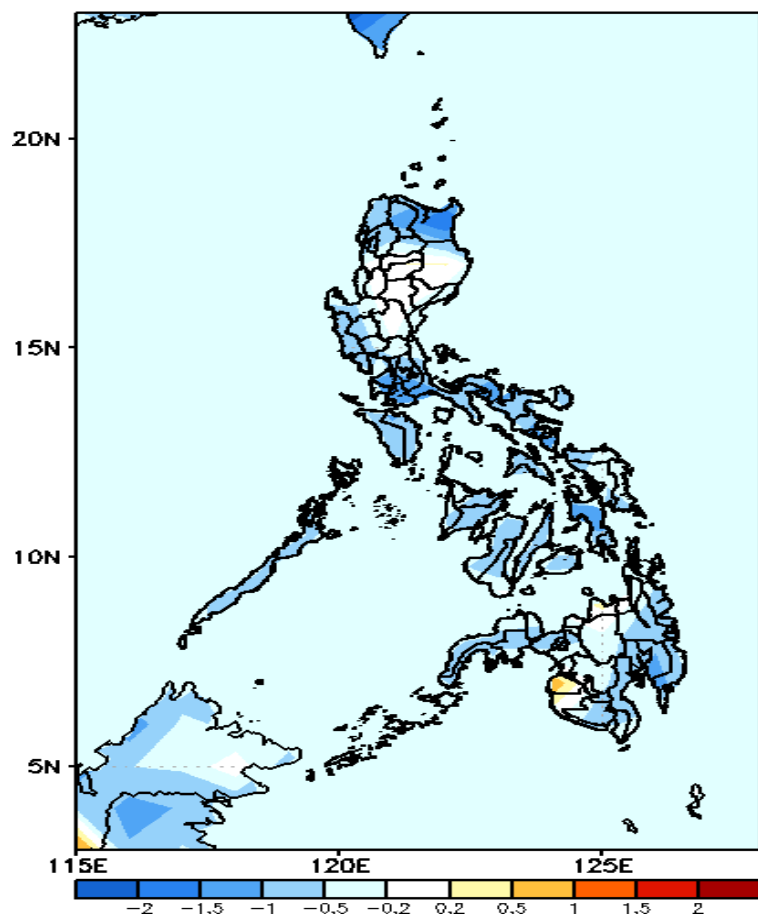
GEFS Week-2 Exceedance Prob. > 200mm
Valid: 20230407 – 20230413



Low probability of rainfall to exceed 200mm in most parts of the country during the forecast period.

GEFS Week-1 & 2 Forecasts: T2m Anomaly

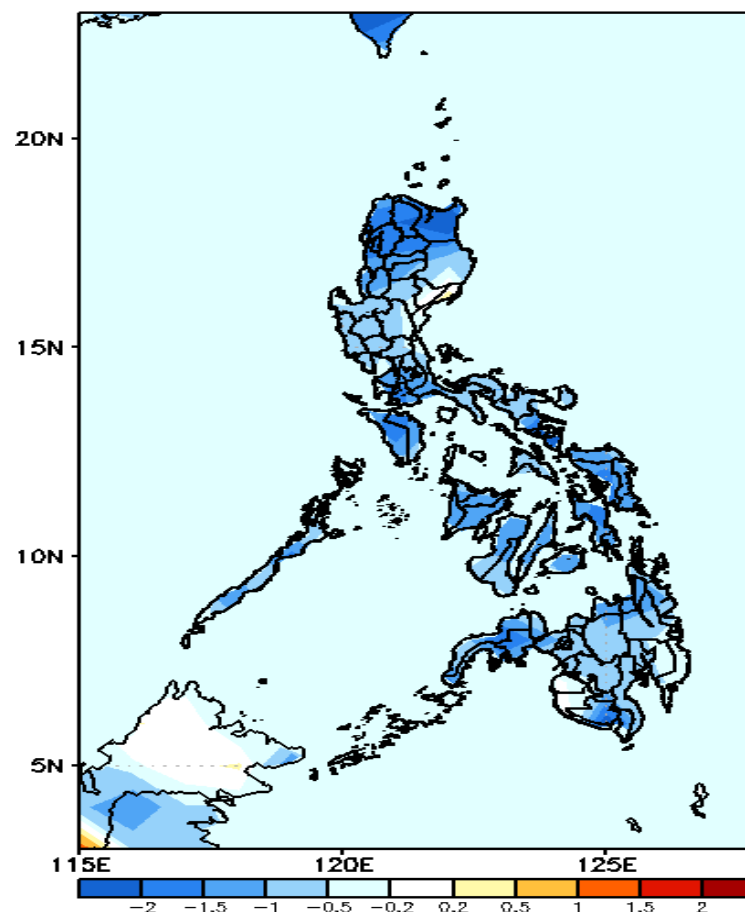
GEFS Week-1 T2m Anomaly
Valid: 20230331 – 20230406



2m Temperature Week 1: Mar 31-Apr 06, 2023

Average to cooler than average surface air temperature will likely experience in most parts of the country during the forecast period.

GEFS Week-2 T2m Anomaly
Valid: 20230407 – 20230413



2m Temperature Week 2: Apr 07-13, 2023

Slightly to cooler than average surface air temperature will likely experience in most parts of the country during the forecast period.