



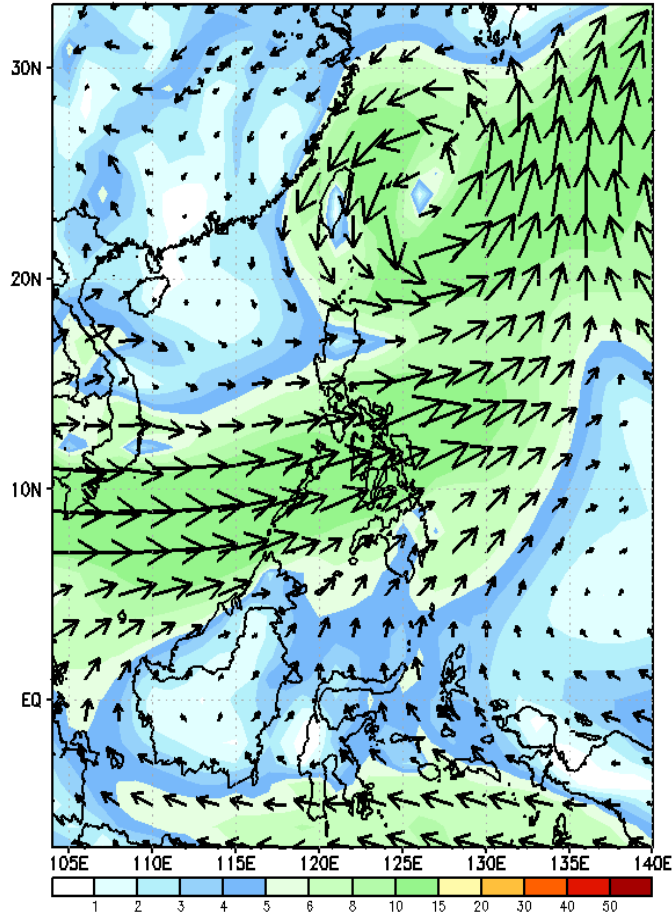
# Week 1 & Week 2 Forecast for the Philippines using GEFS Model



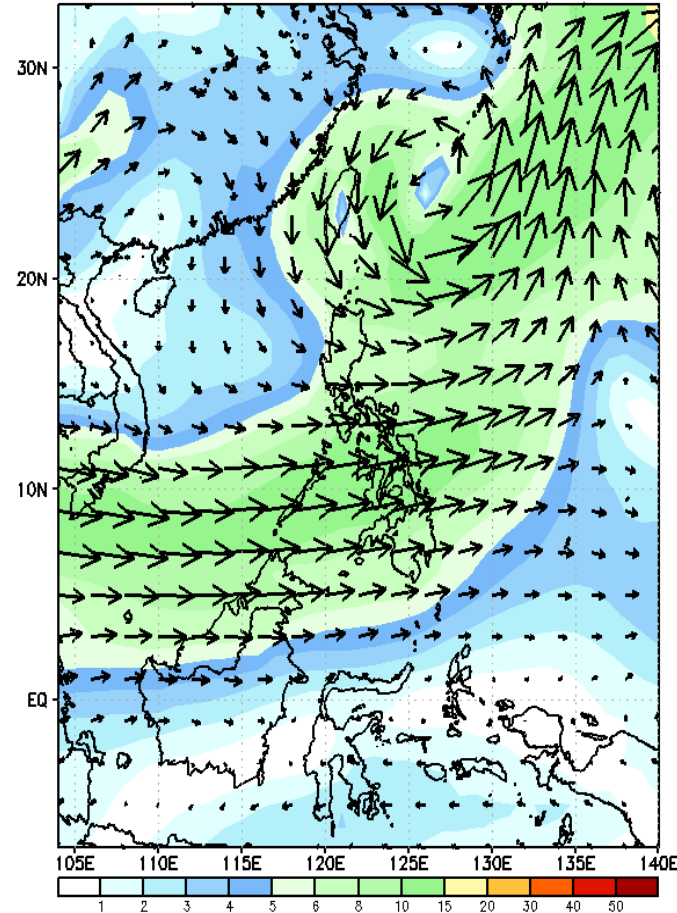
# GEFS Week-1 Forecasts: Wind Forecast

Week 1: May 31 - Jun 06, 2023

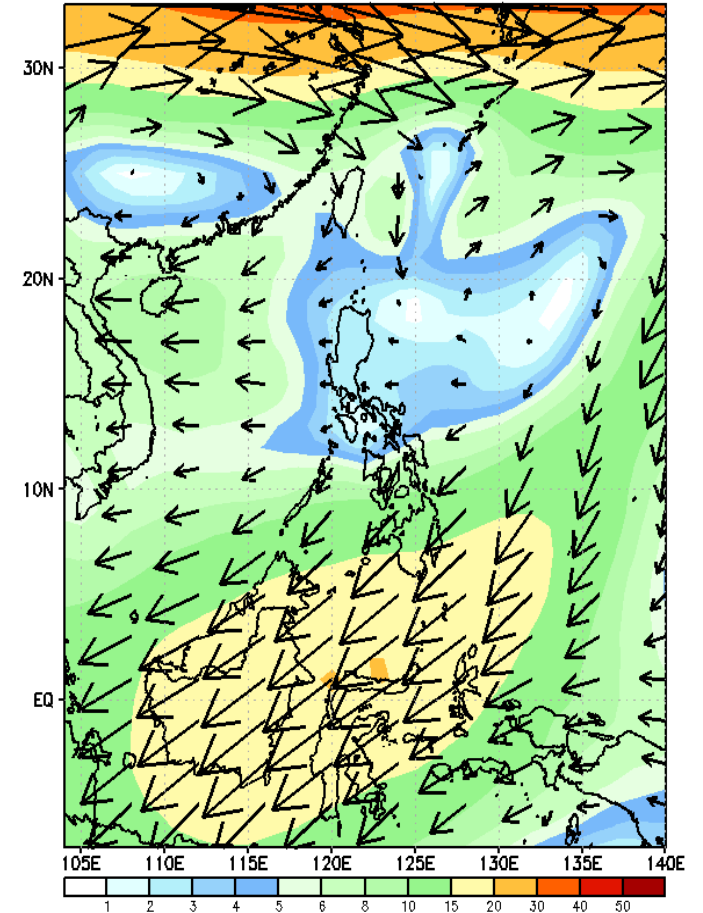
GEFS Week-1 850-hPa Wind Total  
Valid: 20230531 - 20230606



GEFS Week-1 700-hPa Wind Total  
Valid: 20230531 - 20230606

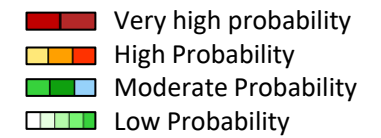


GEFS Week-1 200-hPa Wind Total  
Valid: 20230531 - 20230606



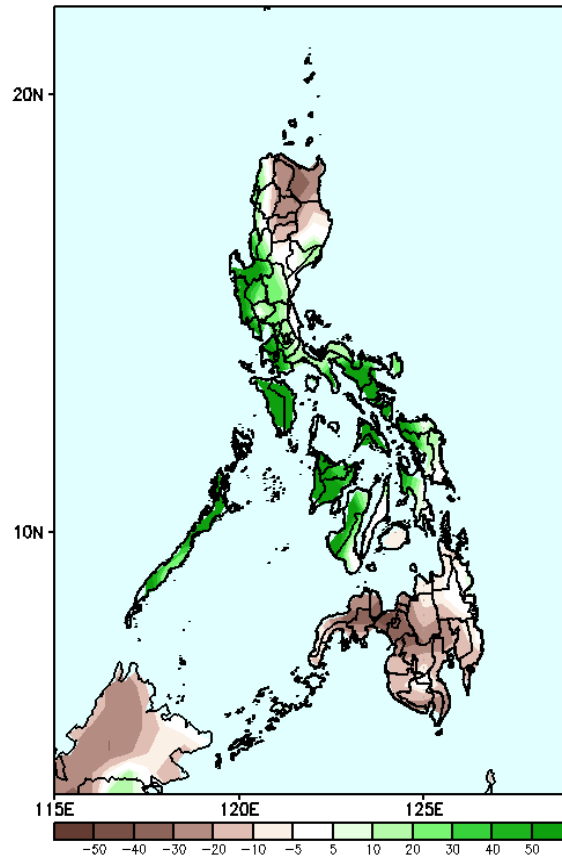
Enhance Southwest Monsoon is forecasted to prevail in most parts of the country.

# Precipitation Anomaly and Exceedance Probability > 25/50 mm



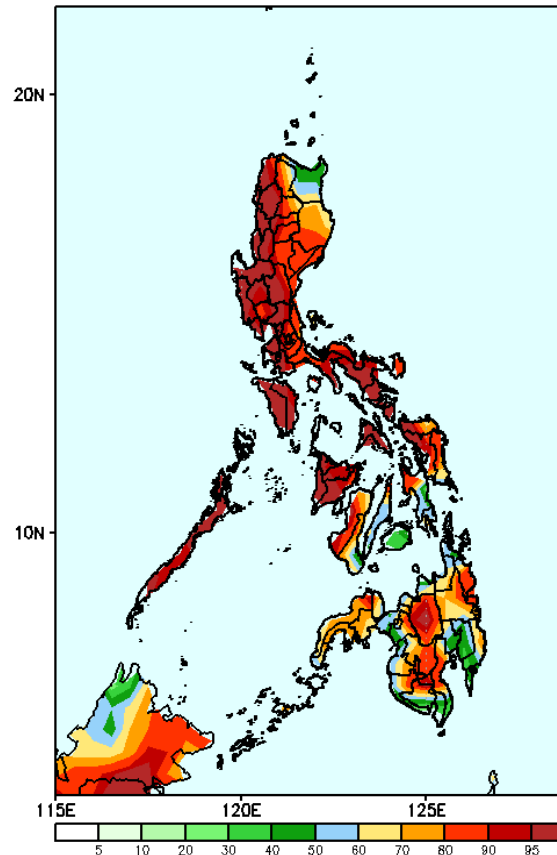
Week 1: May 31 - Jun 06, 2023

GEFS Week-1 Precip Anomaly  
Valid: 20230531 - 20230606



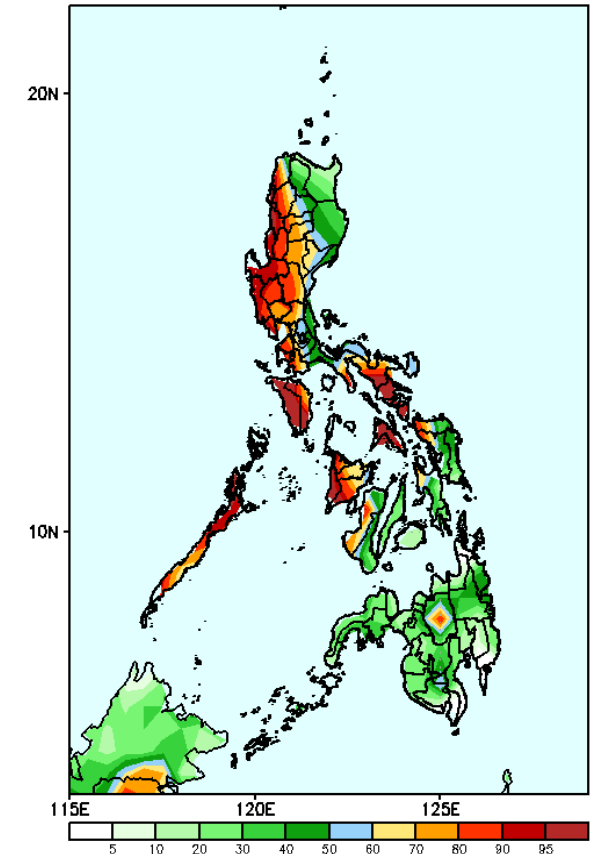
Rainfall deficit of more than 60mm is expected in most parts of CAR, Cagayan, Isabela and most parts of Mindanao while up to 100mm increase of rainfall in the remaining parts of Luzon and most parts of Visayas.

GEFS Week-1 Exceedance Prob. > 25mm  
Valid: 20230531 - 20230606



High to a very high probability to exceed 25mm of rainfall in most parts of the country.

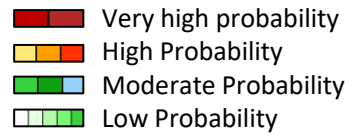
GEFS Week-1 Exceedance Prob. > 50mm  
Valid: 20230531 - 20230606



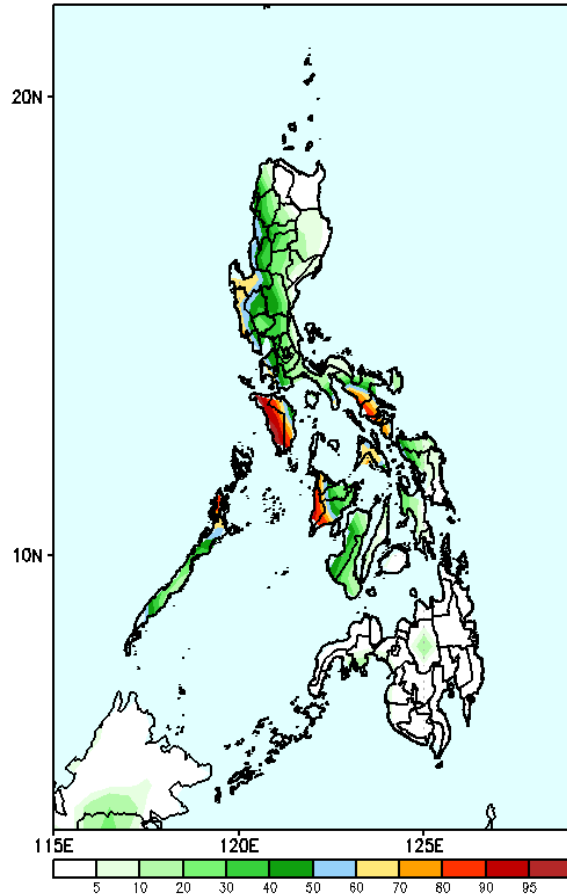
High to a very high probability to exceed 50mm of rainfall in the western sections of Luzon and Visayas, southern portion of the Bicol region, and western portion of Samar and Northern Samar while low chance over the rest of the country.

# Exceedance Probability > 100/150/200 mm

Week 1: May 31 - Jun 06, 2023

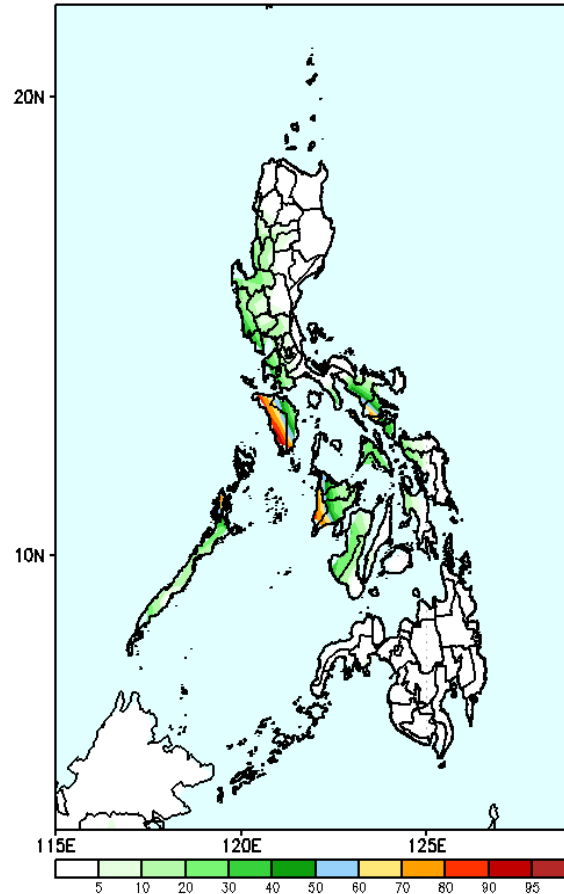


GEFS Week-1 Exceedance Prob. > 100mm  
Valid: 20230531 - 20230606



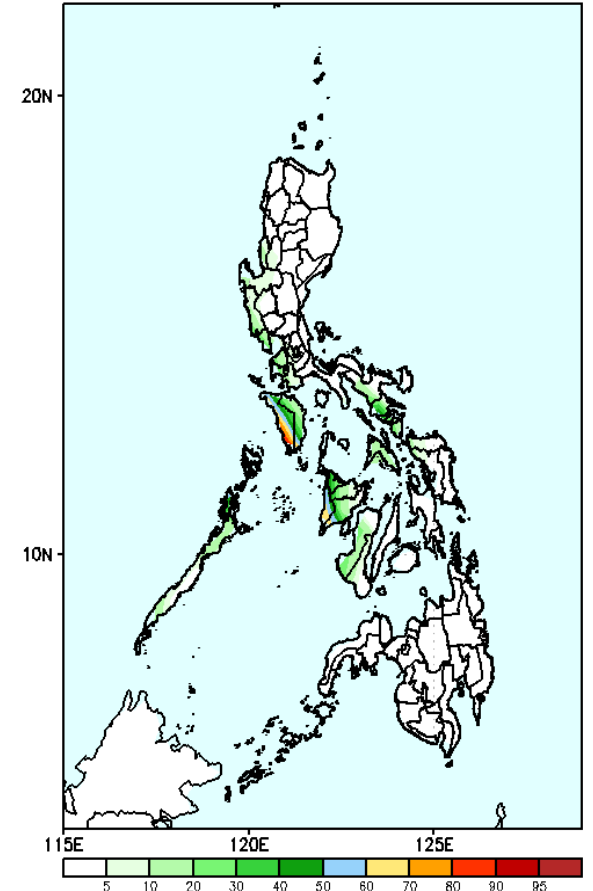
High to a very high probability to exceed 100mm of rainfall in Mindoro provinces, Albay and Sorsogon and Antique, while low to moderate chance for the rest of Luzon and Visayas.

GEFS Week-1 Exceedance Prob. > 150mm  
Valid: 20230531 - 20230606



Moderate to high probability to exceed 150mm of rainfall over Occidental Mindoro and Antique while low likelihood over the rest of the country.

GEFS Week-1 Exceedance Prob. > 200mm  
Valid: 20230531 - 20230606

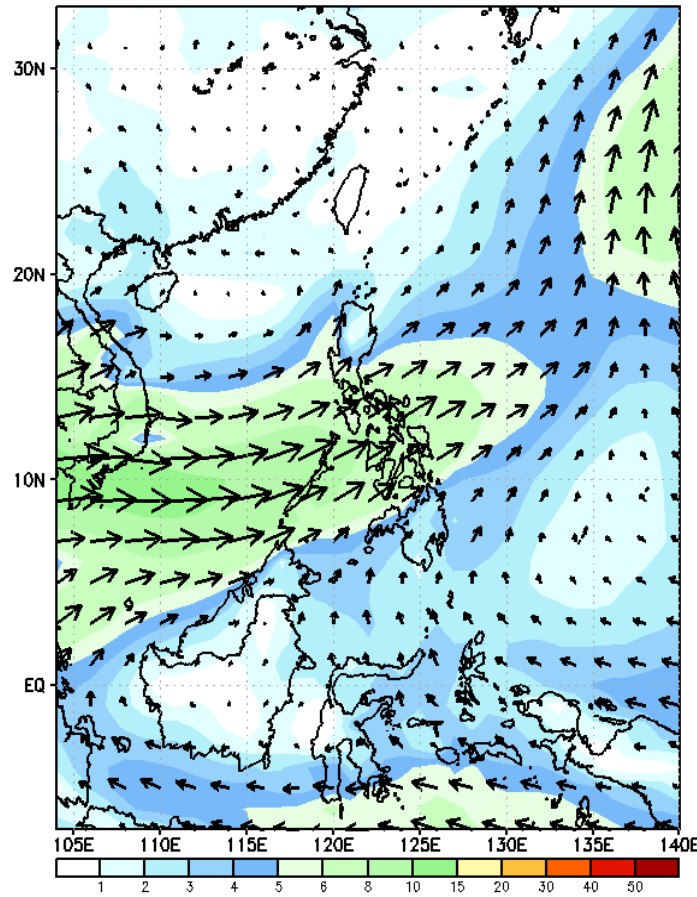


Moderate to high probability to exceed 200mm of rainfall over Occidental Mindoro and Antique while low likelihood over the rest of the country.

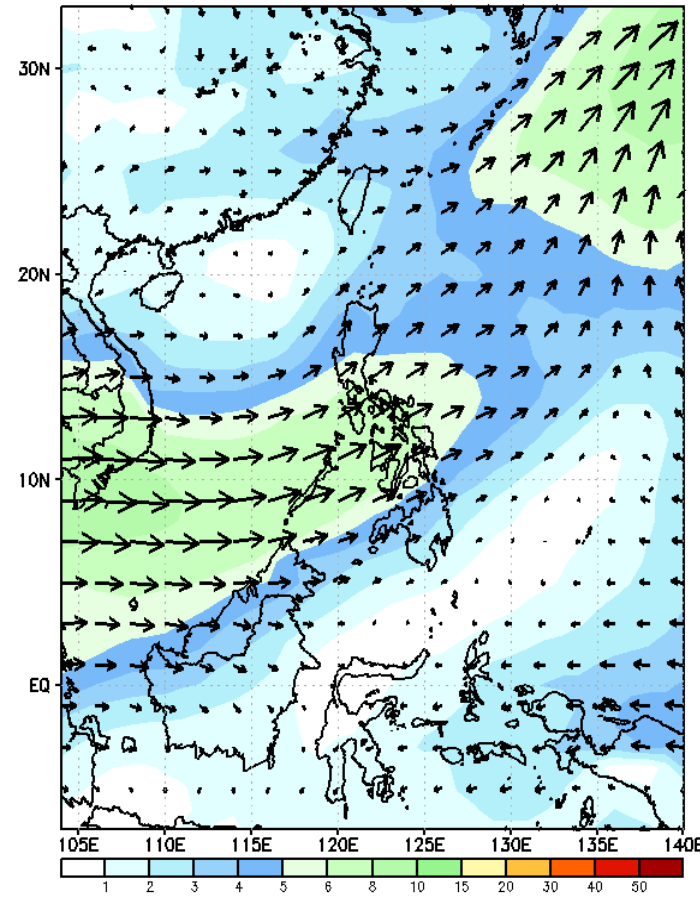
# GEFS Week-2 Forecasts: Wind Forecast

Week 2: June 07 - 13, 2023

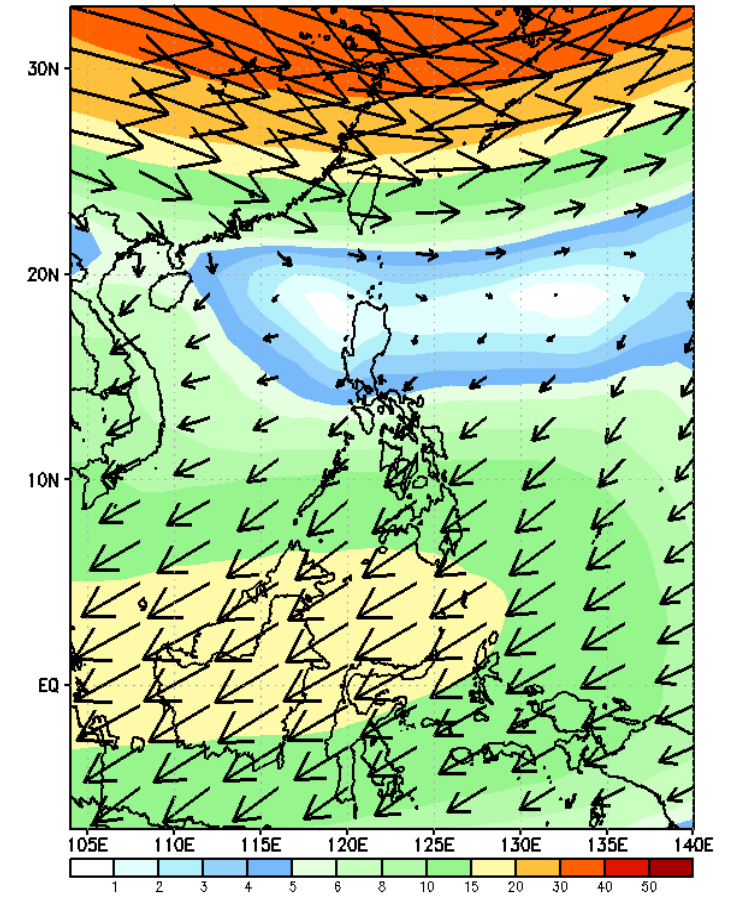
GEFS Week-2 850-hPa Wind Total  
Valid: 20230607 - 20230613



GEFS Week-2 700-hPa Wind Total  
Valid: 20230607 - 20230613

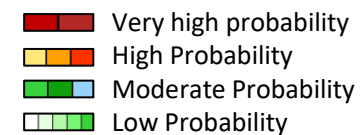


GEFS Week-2 200-hPa Wind Total  
Valid: 20230607 - 20230613



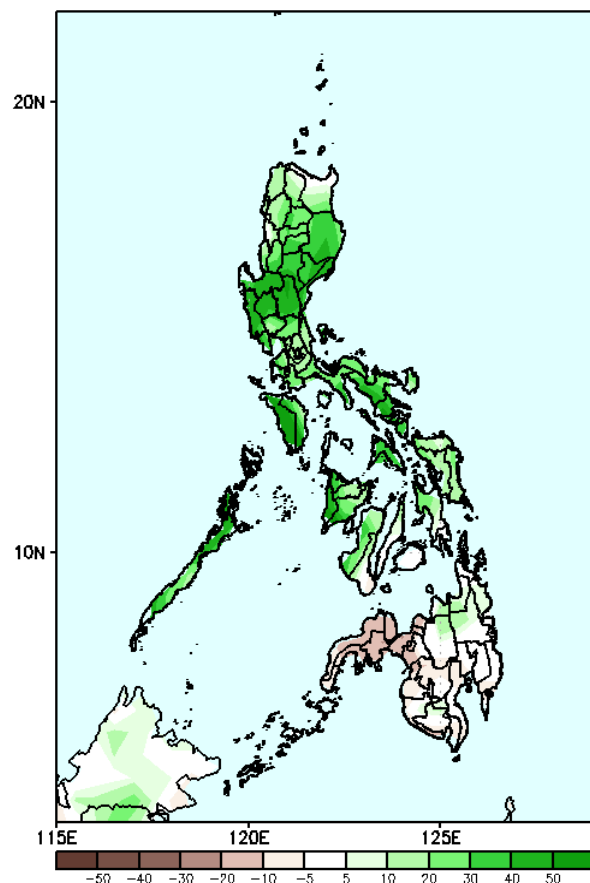
Southwest monsoon is forecasted to prevail in most parts of the country.

# Precipitation Anomaly and Exceedance Probability > 25/50 mm



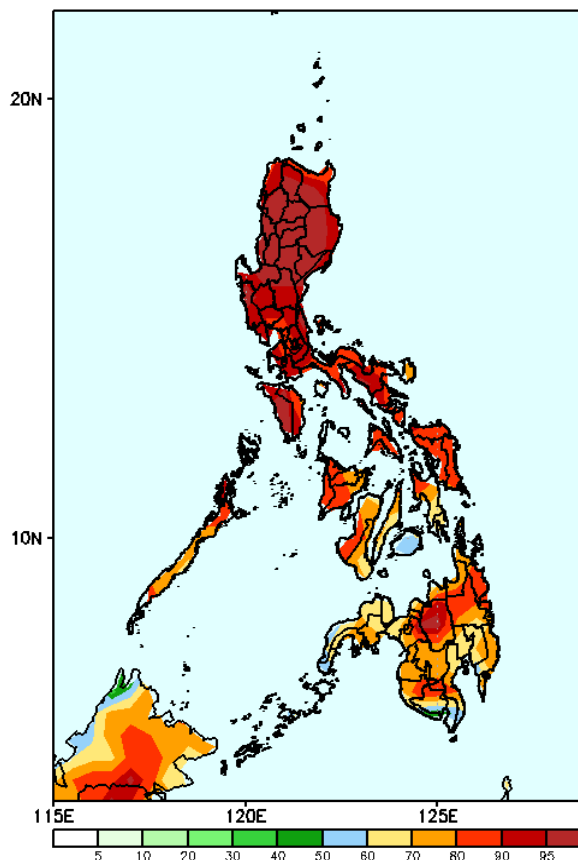
Week 2: June 07 - 13, 2023

GEFS Week-2 Precip Anomaly  
Valid: 20230607 - 20230613



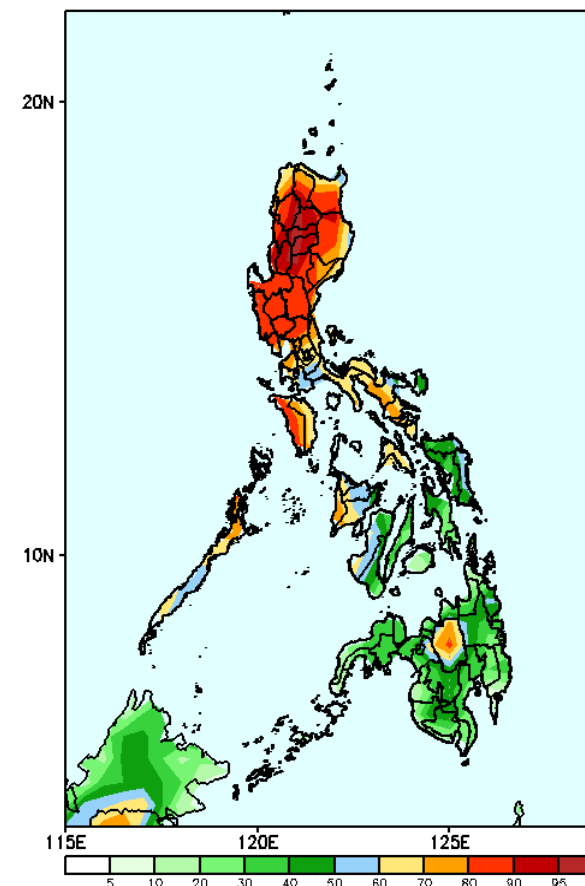
Rainfall increase of more than 100mm is expected in most parts of Luzon, Visayas and Northern Mindanao while rainfall deficit of 20-60mm is more likely in the remaining parts of Mindanao.

GEFS Week-2 Exceedance Prob. > 25mm  
Valid: 20230607 - 20230613



High to a very high probability to exceed 25mm of rainfall over most parts of the country.

GEFS Week-2 Exceedance Prob. > 50mm  
Valid: 20230607 - 20230613



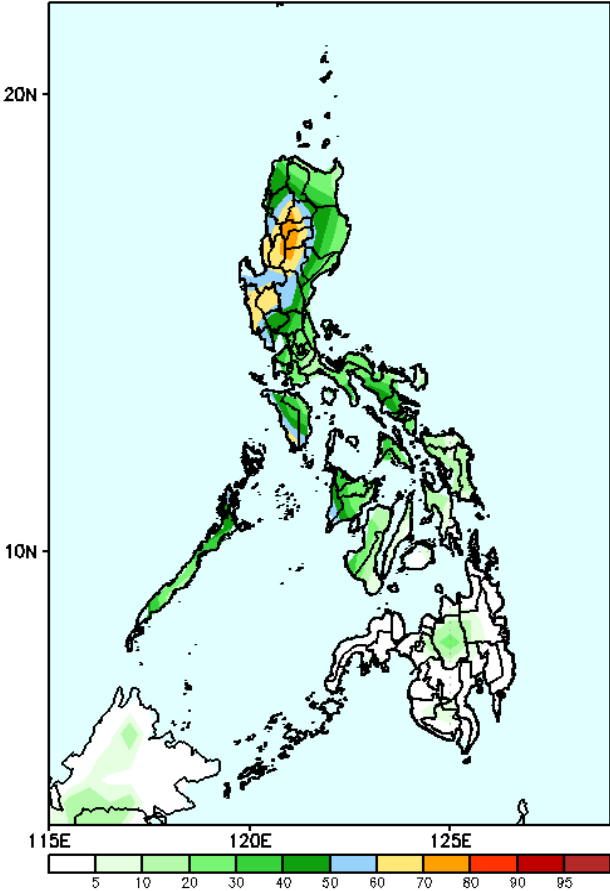
High to very probability to exceed 50mm of rainfall over most parts of Luzon, Bukidnon, and Western Visayas while low to moderate probability over the rest of the country.

# Exceedance Probability > 100/150/200 mm

Week 2: June 07 - 13, 2023

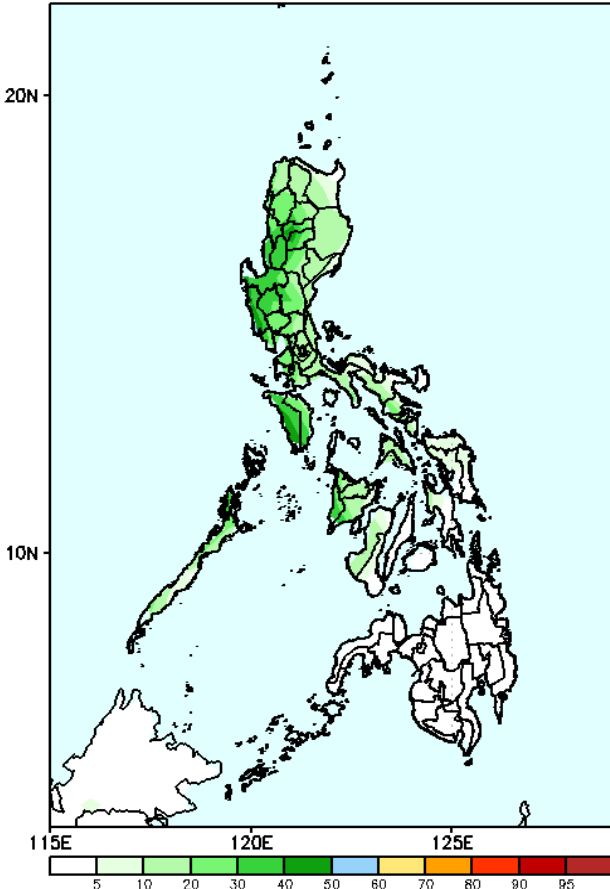
- Very high probability
- High Probability
- Moderate Probability
- Low Probability

GEFS Week-2 Exceedance Prob. > 100mm  
Valid: 20230607 - 20230613



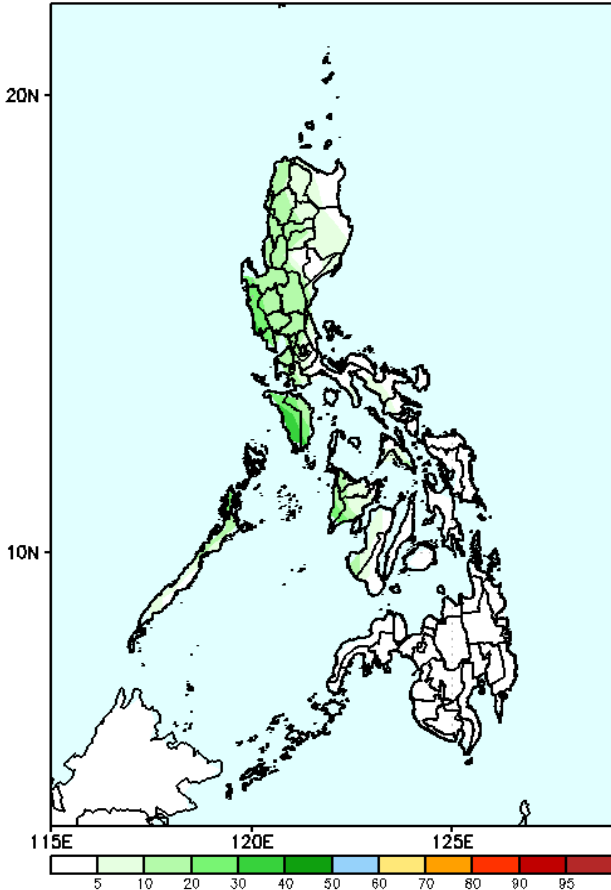
Moderate to high probability to exceed 100mm of rainfall over the western sections of Central Luzon and Ilocos Region, and most parts of CAR while low to moderate likelihood over the rest of the country.

GEFS Week-2 Exceedance Prob. > 150mm  
Valid: 20230607 - 20230613



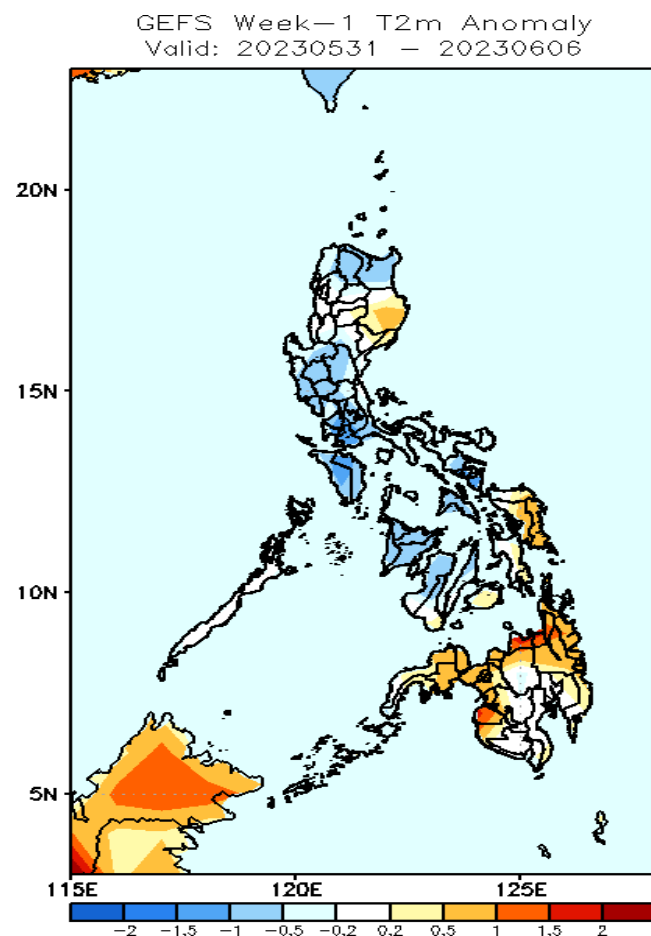
Moderate probability to exceed 150mm of rainfall over the western section of Luzon while low probability for the rest of the country.

GEFS Week-2 Exceedance Prob. > 200mm  
Valid: 20230607 - 20230613



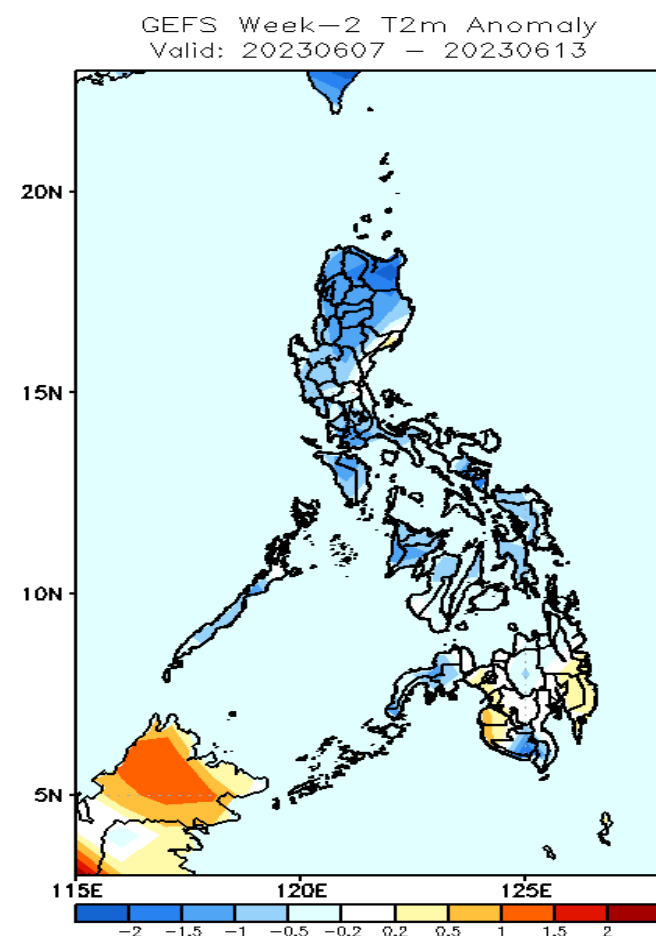
Low probability to exceed 200mm of rainfall over the rest of the country.

# GEFS Week-1 & 2 Forecasts: T2m Anomaly



## 2m Temperature Week 1: May 31 - Jun 06, 2023

Cooler than average surface air temperature will likely experience in most parts of Luzon, Western Visayas and Cebu while slightly warmer to warmer than average temperature will be likely in Isabela, Nueva Vizcaya and the rest of Visayas and Mindanao.



## 2m Temperature Week 2: June 07 - 13, 2023

Average to cooler than average surface air temperature will likely experience in most parts of the country except in Davao Region, Maguindanao, Sultan Kudarat and Lanao provinces where slightly warmer than average temperature is forecasted.

