



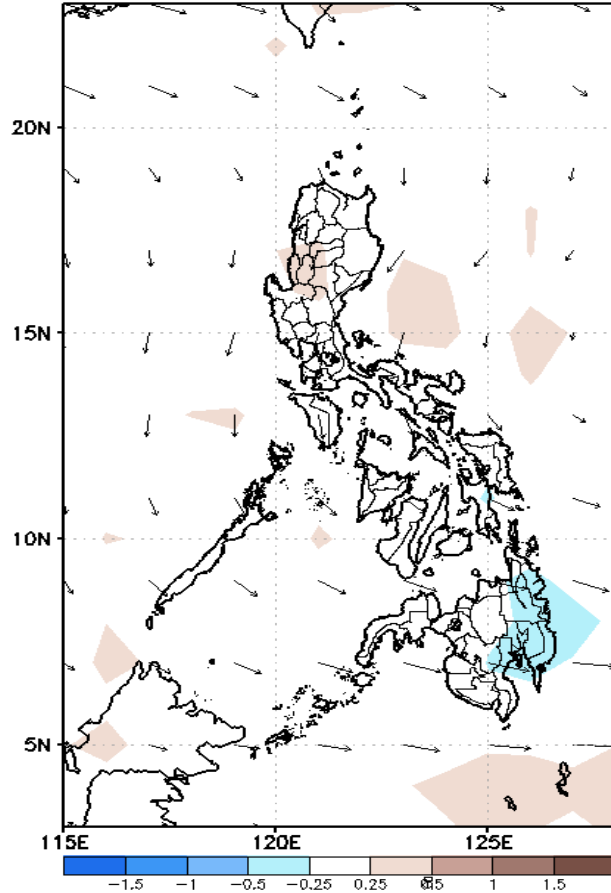
# Week 1 & Week 2 Forecast for the Philippines using GEFS Model



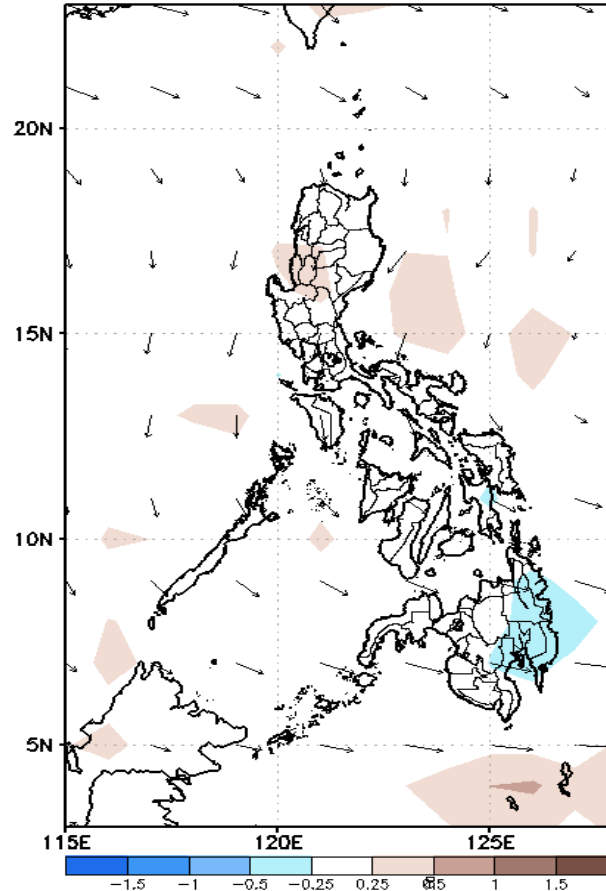
# GEFS Week-1 Forecasts: Divergence & Wind Anomaly

**Week 1: May 31 – June 06, 2021**

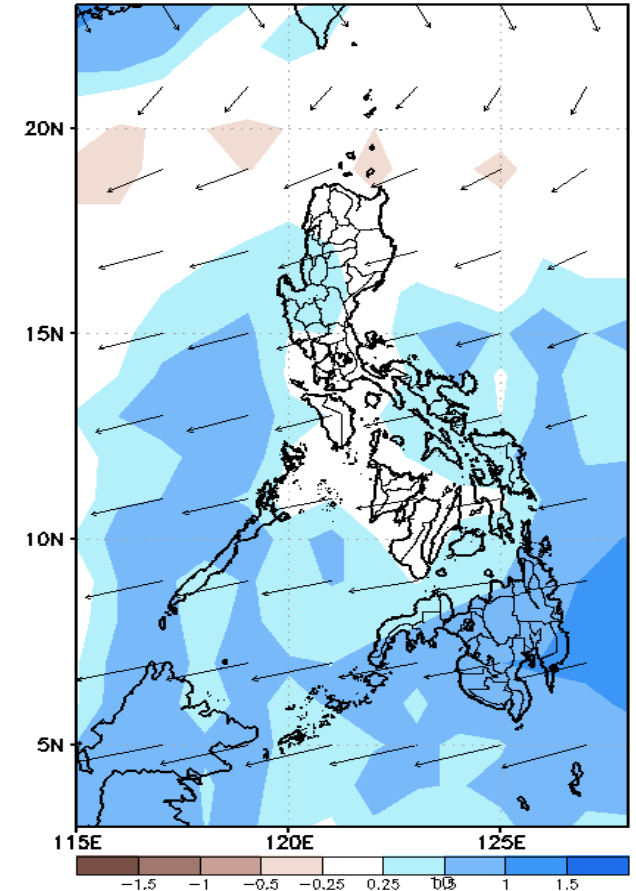
GEFS Week-1 850-hPa Divergence and Wind Anom  
Valid: 20210531 – 20210606



GEFS Week-1 700-hPa Divergence and Wind Anom  
Valid: 20210531 – 20210606



GEFS Week-1 200-hPa Divergence and Wind Anom  
Valid: 20210531 – 20210606

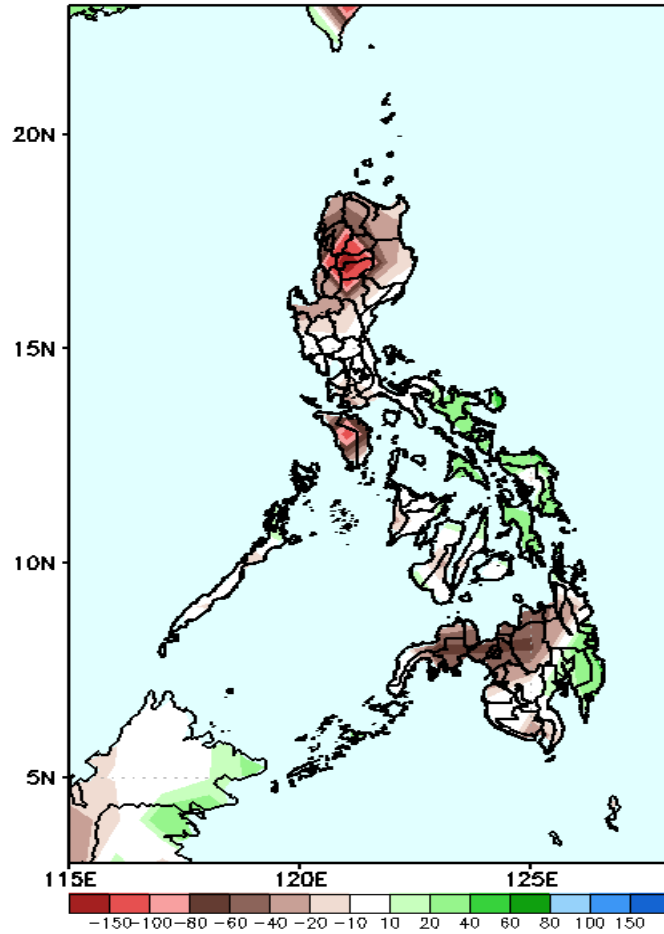


Upper and low level Divergence suggest likelihood of precipitation in parts of Northern Luzon, Central Luzon, Bicol region, Eastern Visayas Bohol and most parts of Mindanao. Southwest windflow affecting the western sections of the country while easterlies affecting the eastern section. Attributing to humid environment but still with warmer temperature and higher heat index during the forecast period.

# Precipitation Anomaly and Exceedance Probability > 25/50 mm

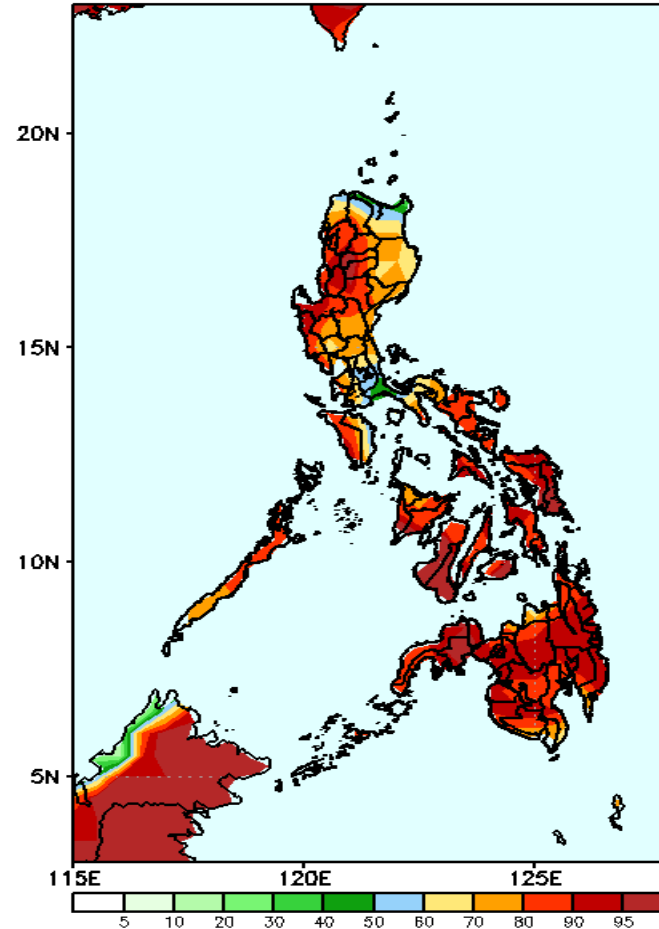
**Week 1: May 31 – June 06, 2021**

GEFS Week-1 Precip Anomaly  
Valid: 20210531 – 20210606



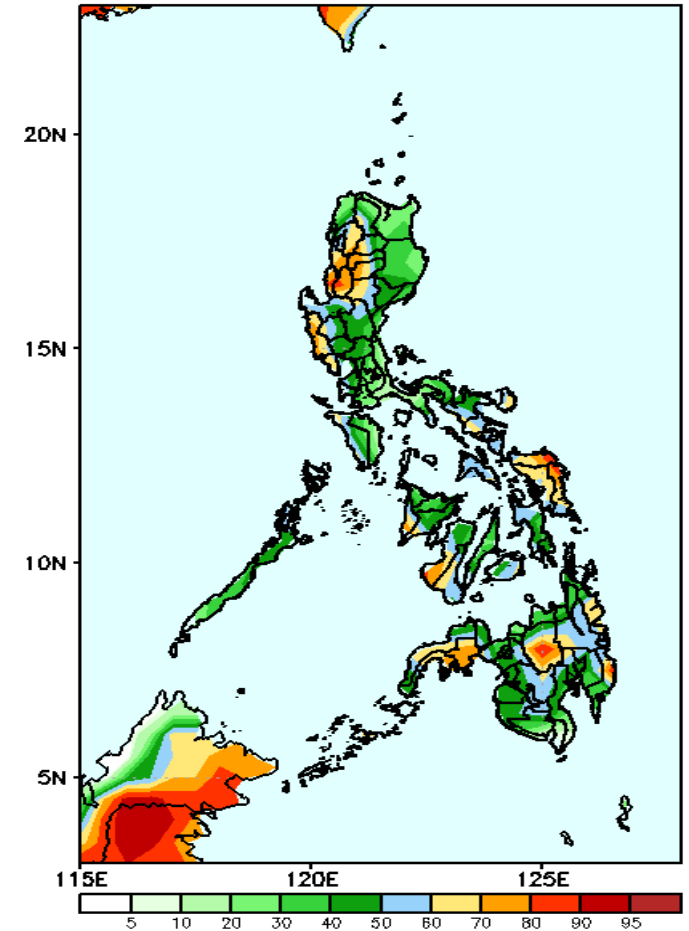
Rainfall deficit of 60-150mm is expected in most parts of Luzon (specially in Cordillera Region & Mindoro) and in most parts of Mindanao while 40-60mm increase of rainfall in Easter and Central Visayas and Davao Region is more likely.

GEFS Week-1 Exceedance Prob. > 25mm  
Valid: 20210531 – 20210606



High probability of rainfall to exceed 25mm in most parts of the country during the forecast period.

GEFS Week-1 Exceedance Prob. > 50mm  
Valid: 20210531 – 20210606

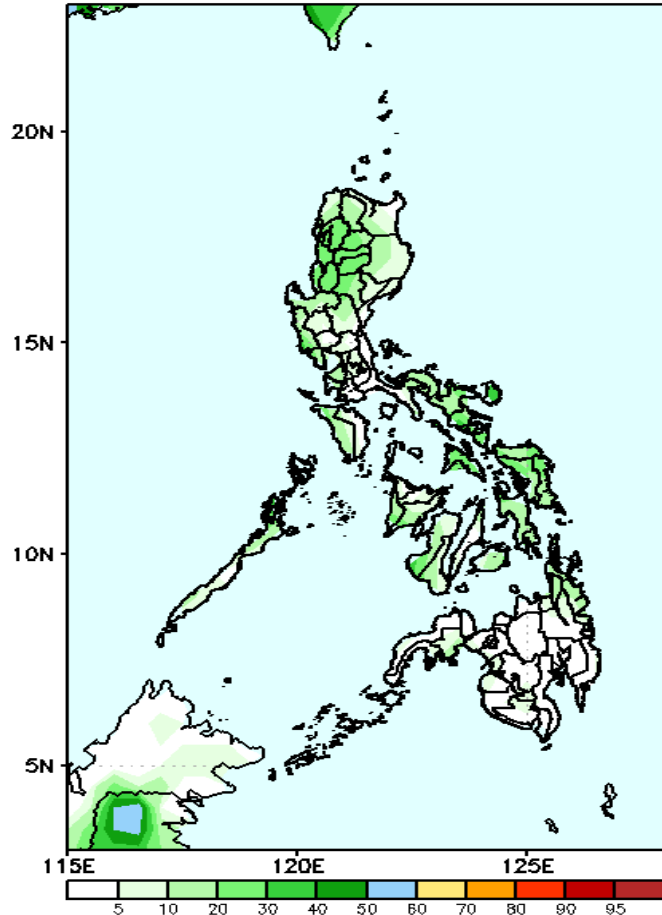


High probability of rainfall to exceed 50mm in most parts of Cordillera region, La Union, Zambales, Bataan, parts of Bicol region, Samar provinces, parts of Western Visayas, Surigao del Sur, Bukidnon and most parts of Zamboanga peninsula while less likely for the rest of the country during the forecast period.

# Exceedance Probability > 100/150/200 mm

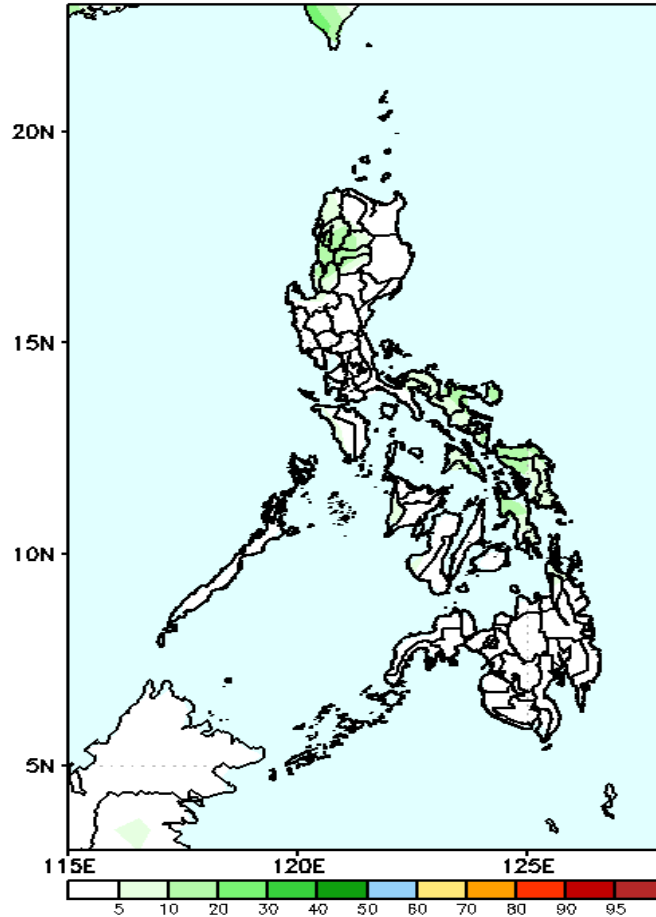
## Week 1: May 31 – June 06, 2021

GEFS Week-1 Exceedance Prob. > 100mm  
Valid: 20210531 – 20210606



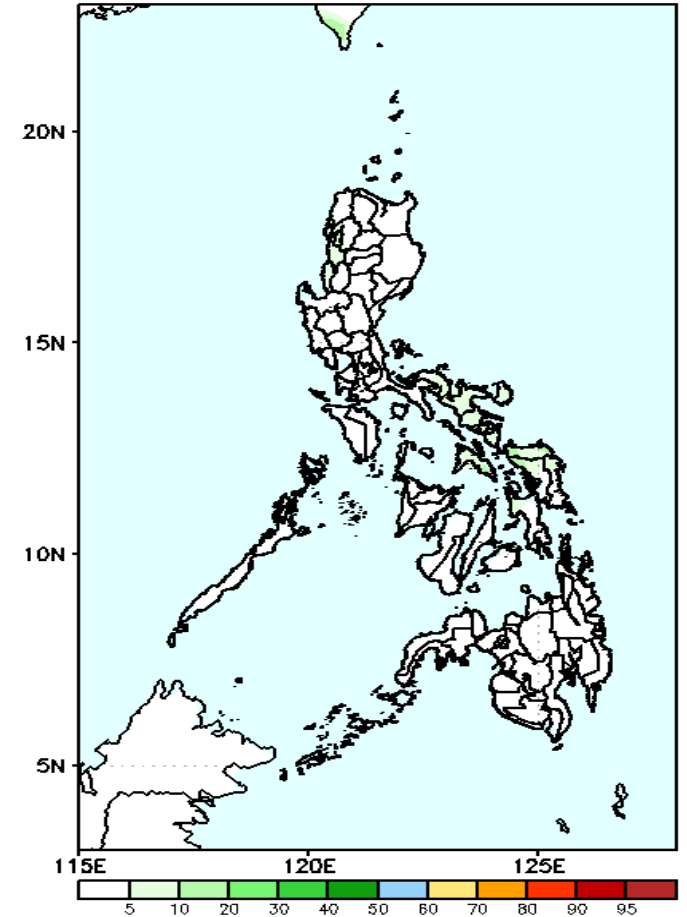
Less probability of rainfall to exceed 100mm in most parts of the country during the forecast period.

GEFS Week-1 Exceedance Prob. > 150mm  
Valid: 20210531 – 20210606



Less probability of rainfall to exceed 150mm in most parts of the country during the forecast period.

GEFS Week-1 Exceedance Prob. > 200mm  
Valid: 20210531 – 20210606



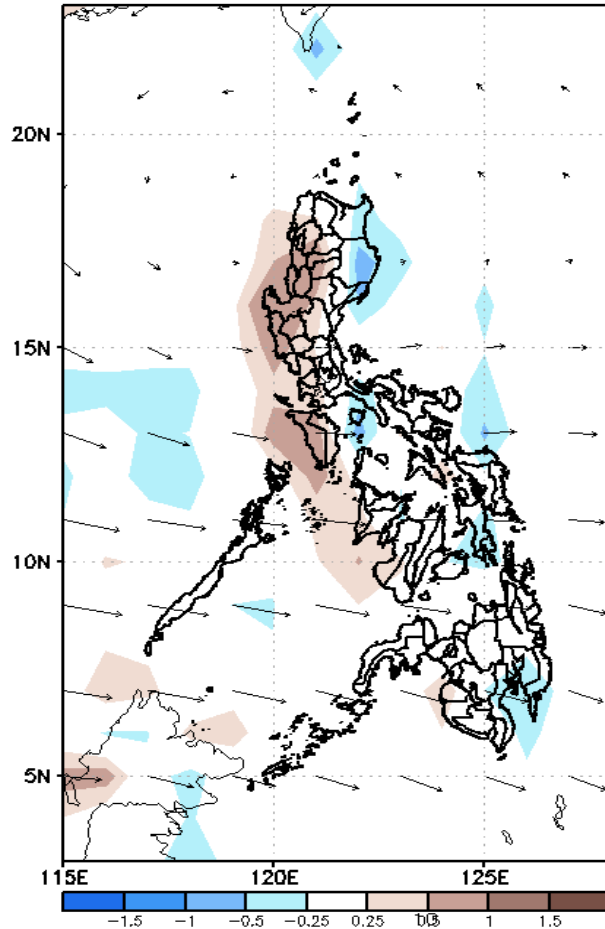
Less probability of rainfall to exceed 200mm in most parts of the country during the forecast period.



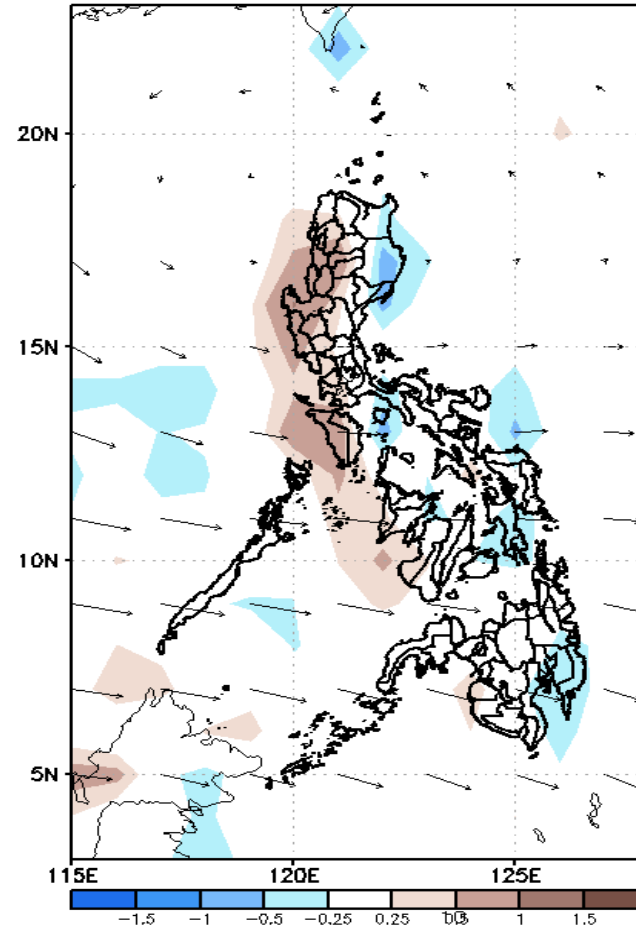
# GEFS Week-2 Forecasts: Divergence & Wind Anomaly

## Week 2: June 07-13, 2021

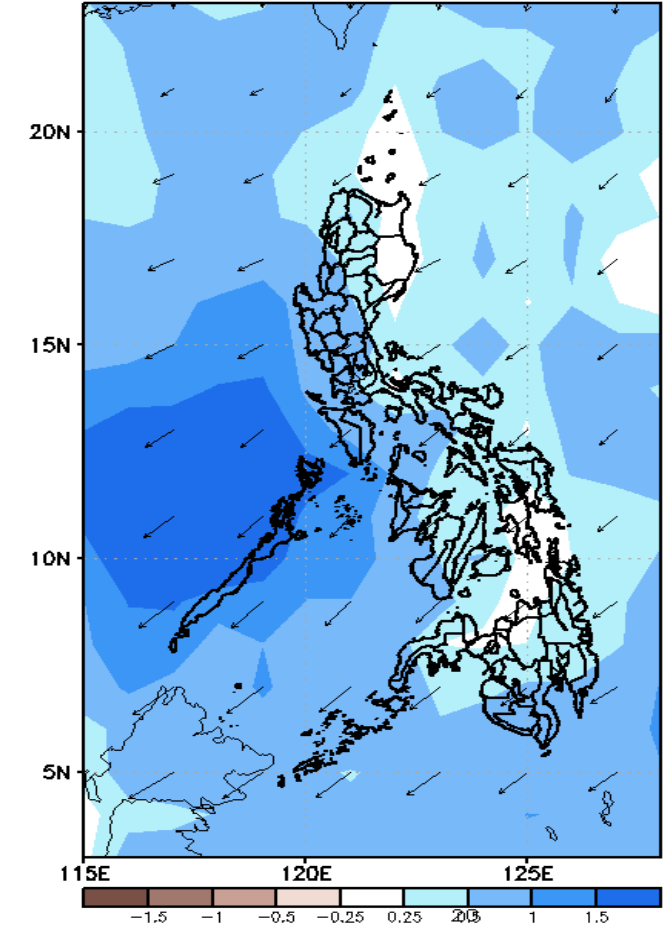
GEFS Week-2 850-hPa Divergence and Wind Anom  
Valid: 20210607 - 20210613



GEFS Week-2 700-hPa Divergence and Wind Anom  
Valid: 20210607 - 20210613



GEFS week-2 200-hPa Divergence and Wind Anom  
Valid: 20210607 - 20210613

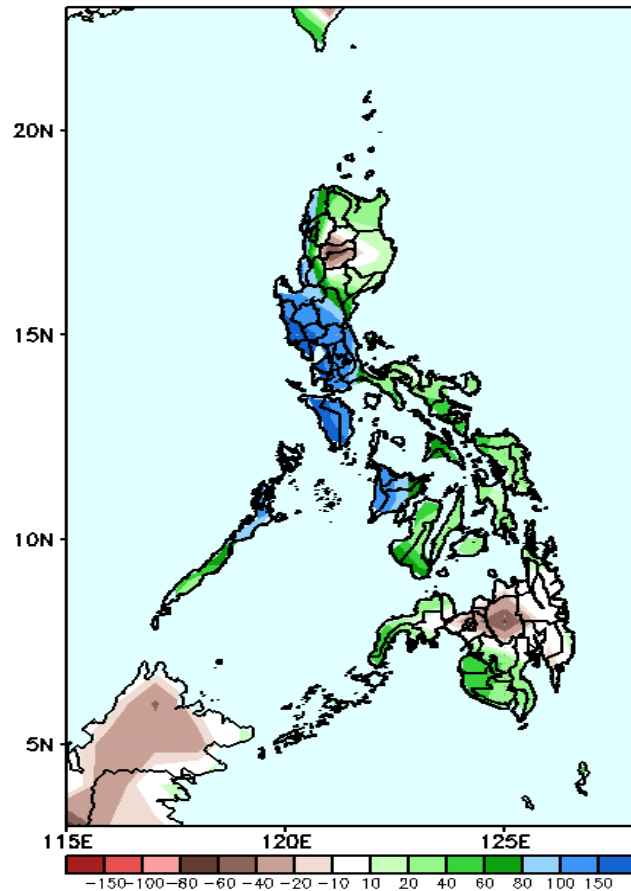


Upper and low level Divergence suggest likelihood of precipitation in most parts of the country. Southwesterly windflow affecting most parts of the country. Attributing to warmer temperature and humid environment during the forecast period.

# Precipitation Anomaly and Exceedance Probability > 25/50 mm

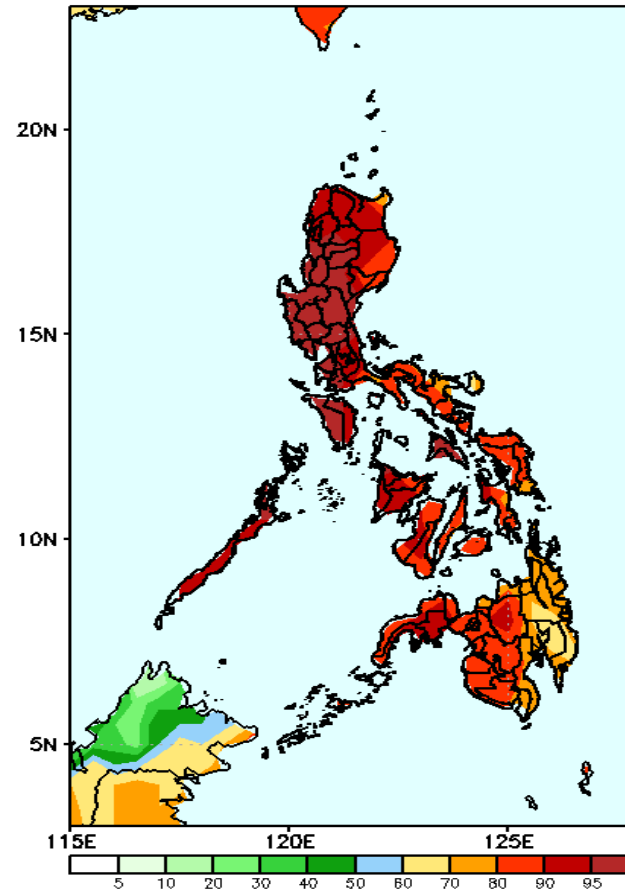
## Week 2: June 07-13, 2021

GEFS Week-2 Precip Anomaly  
Valid: 20210607 - 20210613



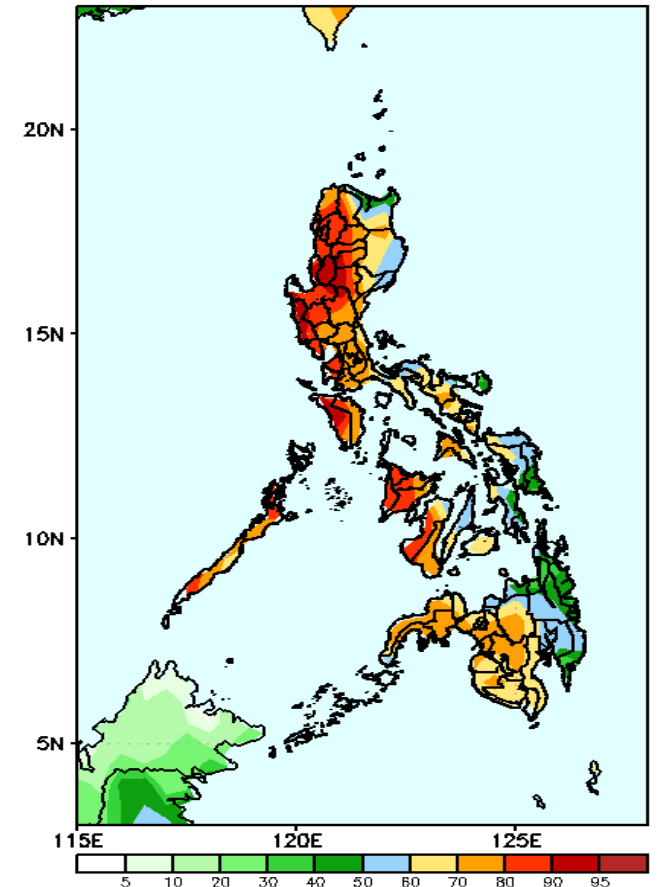
Increase of rainfall of 60-150mm in most parts of the country (up to 150mm in central and western sections of Luzon) while rainfall deficit of up to 80mm is expected in Mt. Province, Ifugao and Bukidnon.

GEFS Week-2 Exceedance Prob. > 25mm  
Valid: 20210607 - 20210613



High probability of rainfall to exceed 25mm in most parts of the country during the forecast period.

GEFS Week-2 Exceedance Prob. > 50mm  
Valid: 20210607 - 20210613



High probability of rainfall to exceed 50mm in most parts of the country except Eastern Samar and CARAGA region during the forecast period.

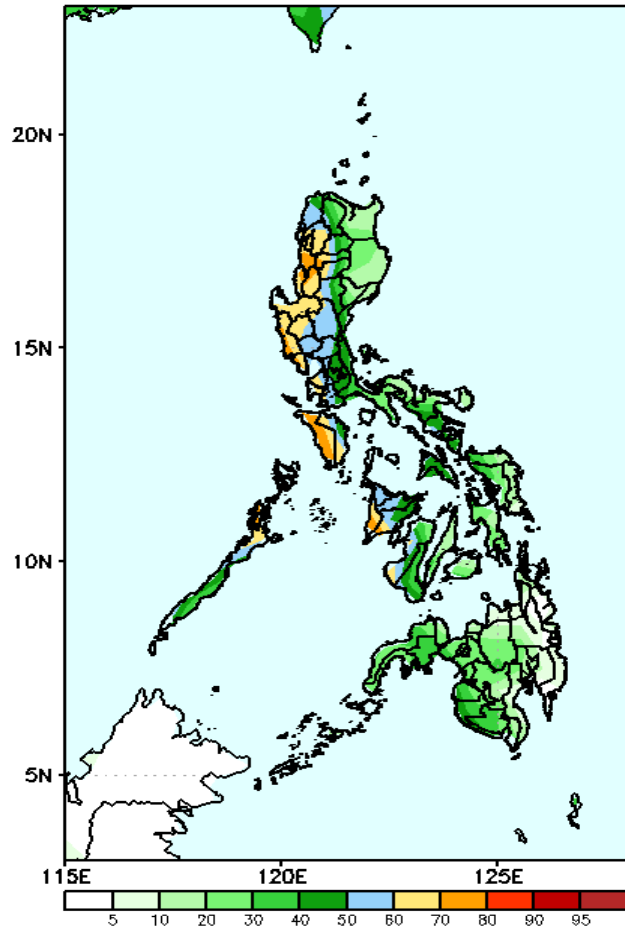




# Exceedance Probability > 100/150/200 mm

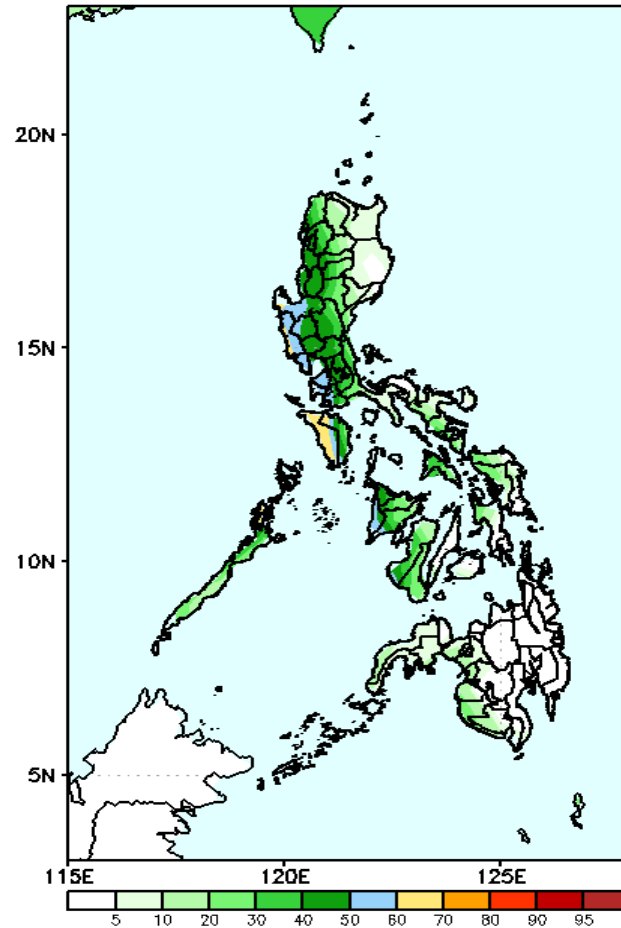
**Week 2: June 07-13, 2021**

GEFS Week-2 Exceedance Prob. > 100mm  
Valid: 20210607 - 20210613



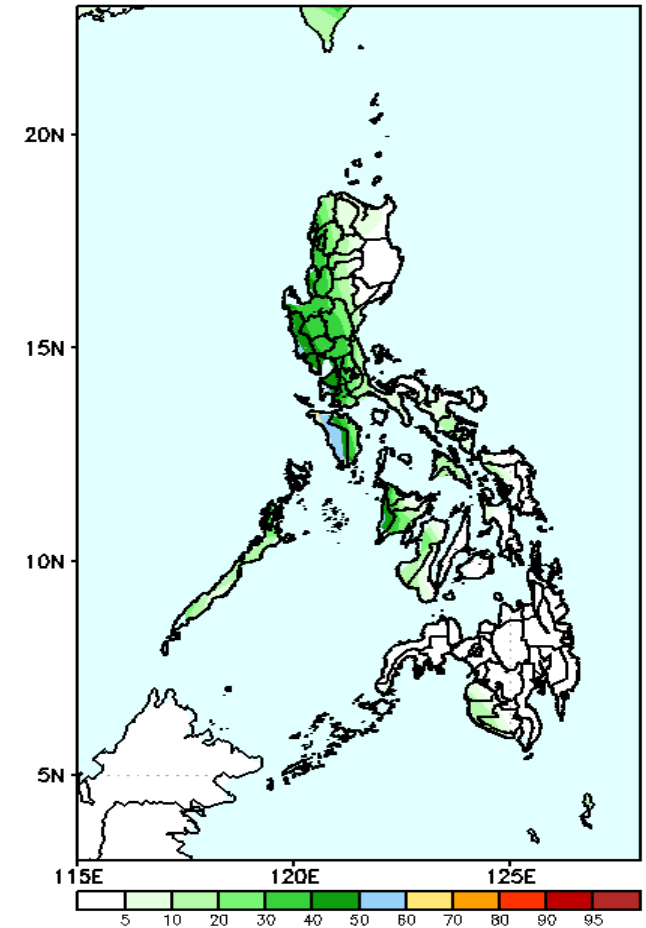
60-80% probability of rainfall to exceed 100mm in most parts of Western Luzon and Western Visayas while less likely for the rest of the country during the forecast period.

GEFS Week-2 Exceedance Prob. > 150mm  
Valid: 20210607 - 20210613



60-80% probability of rainfall to exceed 150mm in Pangasinan, Zambales, Bataan, Cavite and Occidental Mindoro while less likely for the rest of the country during the forecast period.

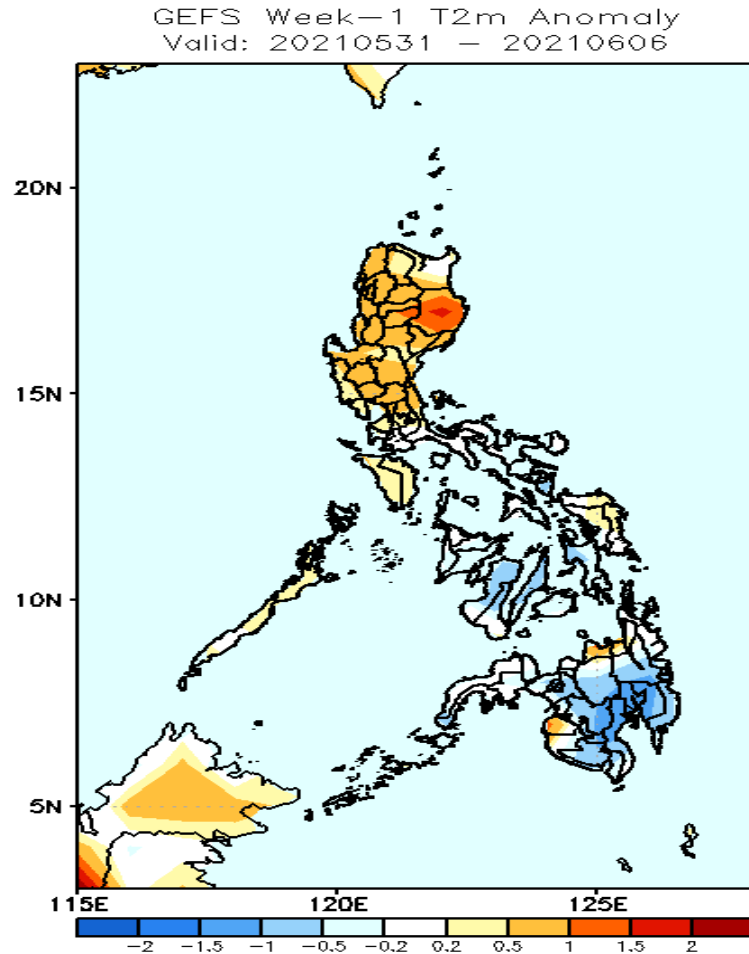
GEFS Week-2 Exceedance Prob. > 200mm  
Valid: 20210607 - 20210613



Less probability of rainfall to exceed 200mm in most parts of the country during the forecast period.

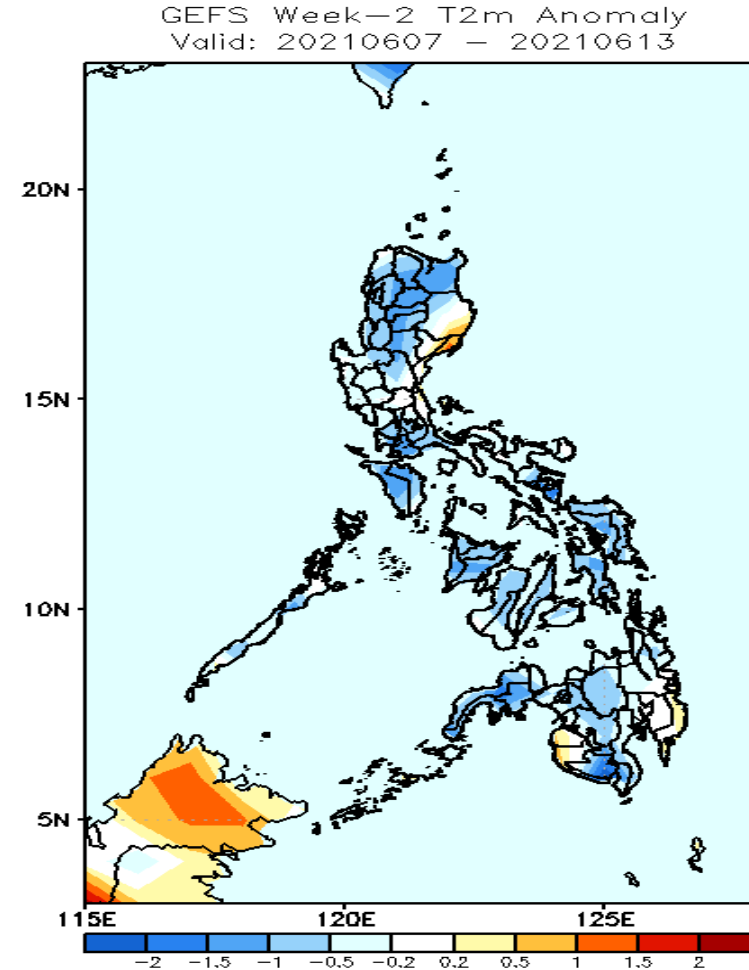


# GEFS Week-1 & 2 Forecasts: T2m Anomaly



## 2m Temperature Week 1: May 31 – June 06, 2021

Warmer than average surface air temperature will likely experience in Isabela and average to slightly warmer than average in most parts of Luzon and Samar provinces while average to slightly cooler than average temperature for the rest of the country during the forecast period.



## 2m Temperature Week 2: June 07-13, 2021

Slightly cooler to cooler than average surface air temperature will likely experience in most parts of country except with patches of slightly warmer than average temperature in eastern Isabela & Aurora during the forecast period.