



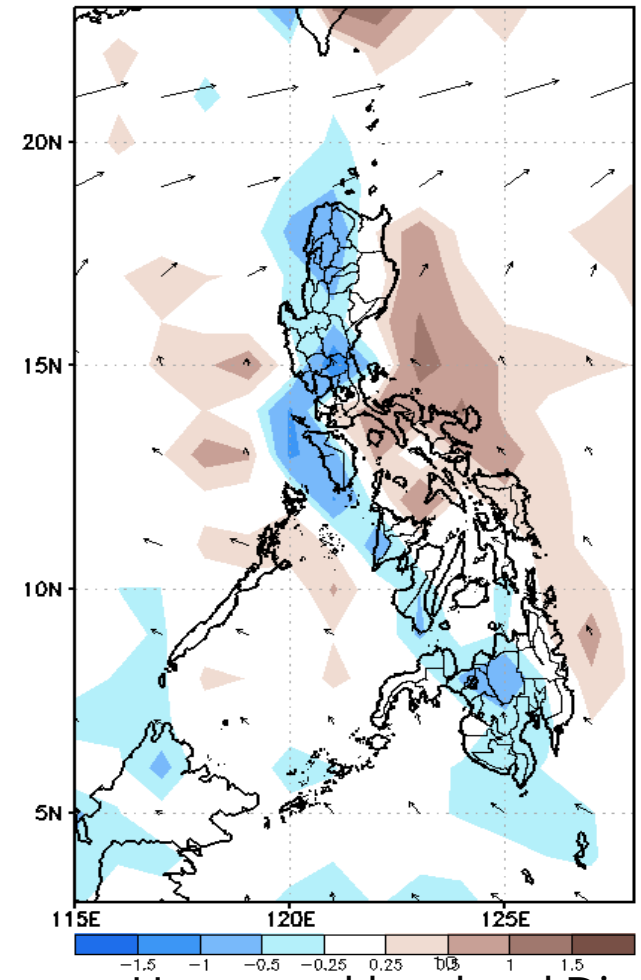
Week 1 & Week 2 Forecast for the Philippines using GEFS Model



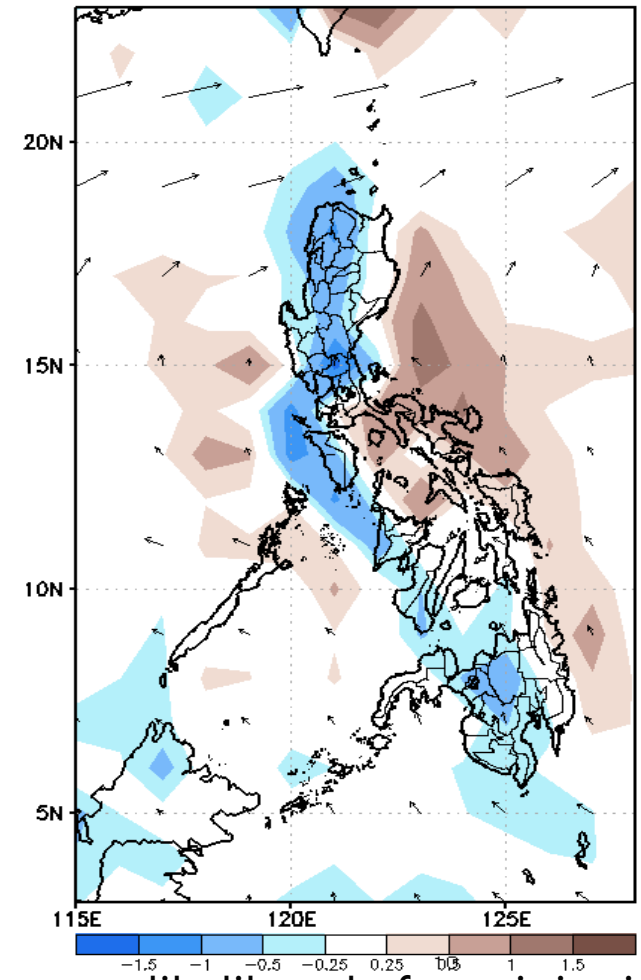
GEFS Week-1 Forecasts: Divergence & Wind Anomaly

Week 1: Dec 31, 2020-Jan 6, 2021

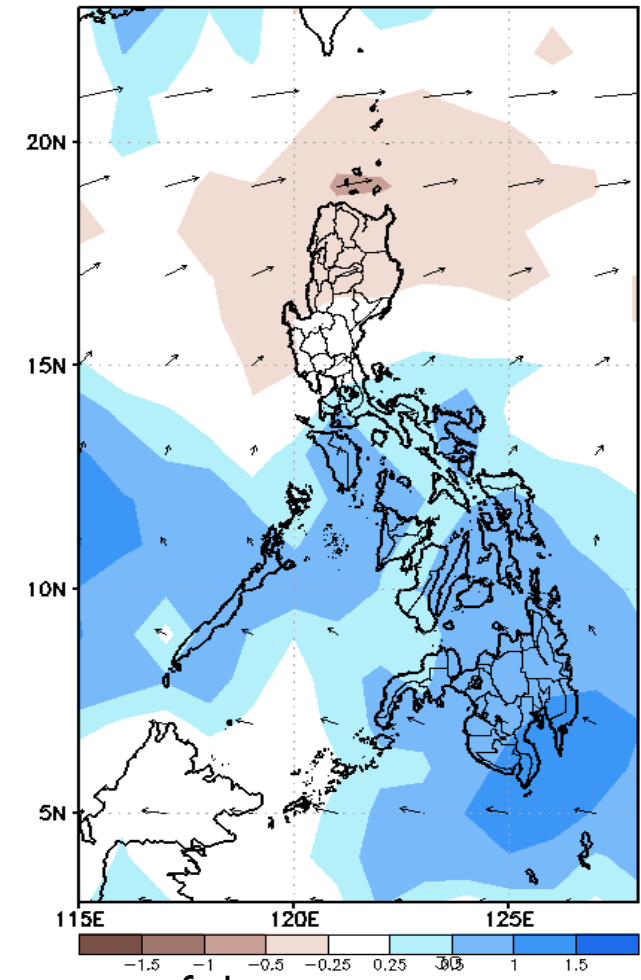
GEFS Week-1 850-hPa Divergence and Wind Anom
Valid: 20201231 - 20210106



GEFS Week-1 700-hPa Divergence and Wind Anom
Valid: 20201231 - 20210106



GEFS Week-1 200-hPa Divergence and Wind Anom
Valid: 20201231 - 20210106

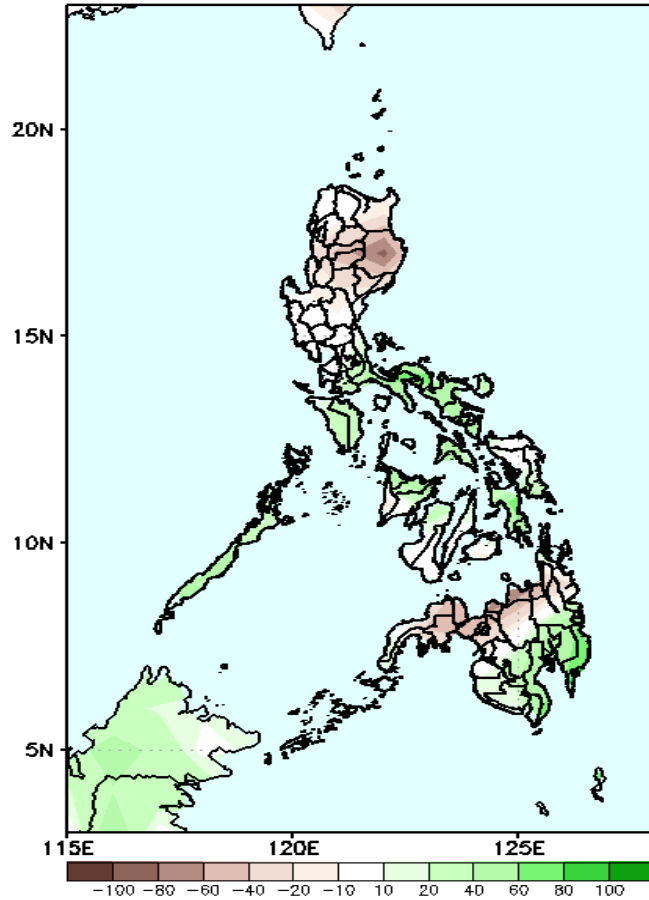


Upper and low level Divergence suggest likelihood of precipitation in most parts of the country. Northeast Monsoon affecting most parts of Luzon and eastern sections of Visayas and Mindanao during the forecast period.

Precipitation Anomaly and Exceedance Probability > 25/50 mm

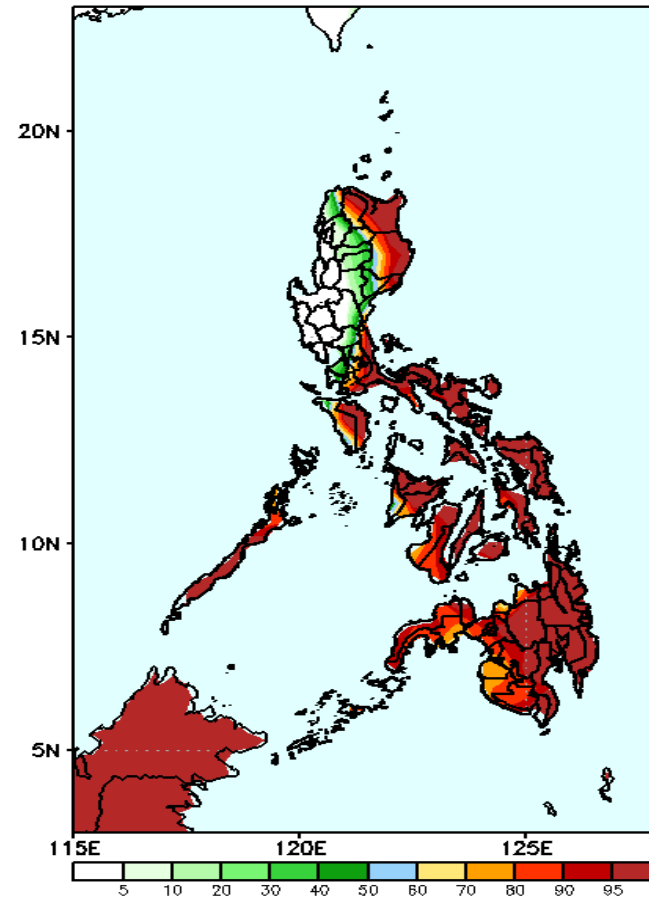
Week 1: Dec 31, 2020-Jan 6, 2021

GEFS Week-1 Precip Anomaly
Valid: 20201231 - 20210106



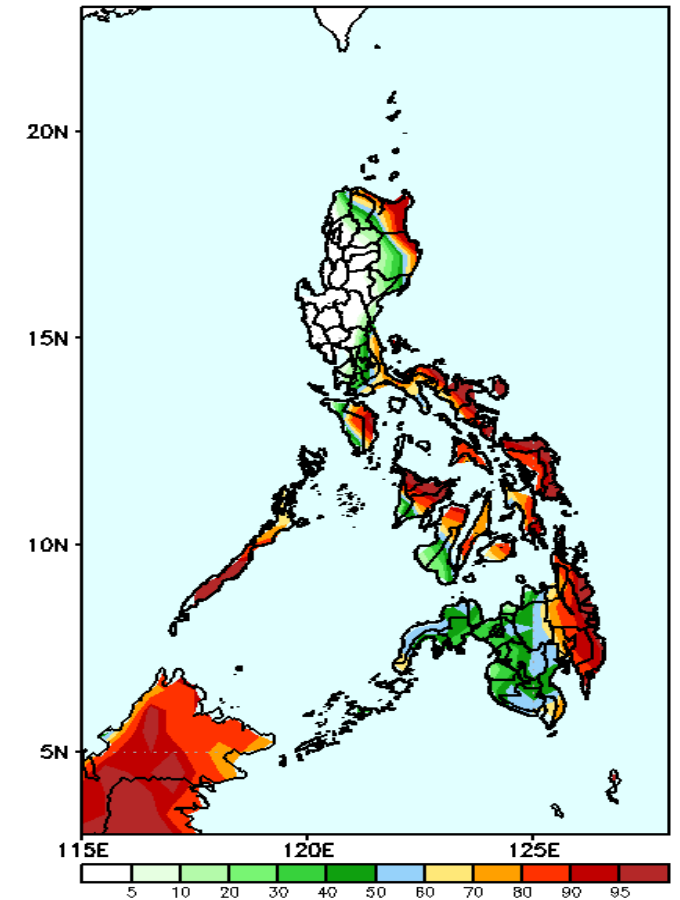
Increase of rainfall of 40-80mm is expected in southern Luzon, Bicol Region, central Visayas and southern Mindanao while rainfall deficit of 40-80mm in Isabela and northern Mindanao.

GEFS Week-1 Exceedance Prob. > 25mm
Valid: 20201231 - 20210106



High probability of rainfall to exceed 25mm in Apayao, Cagayan, Isabela, Southern Luzon, Bicol Region and in most parts of Visayas and Mindanao during the forecast period.

GEFS Week-1 Exceedance Prob. > 50mm
Valid: 20201231 - 20210106

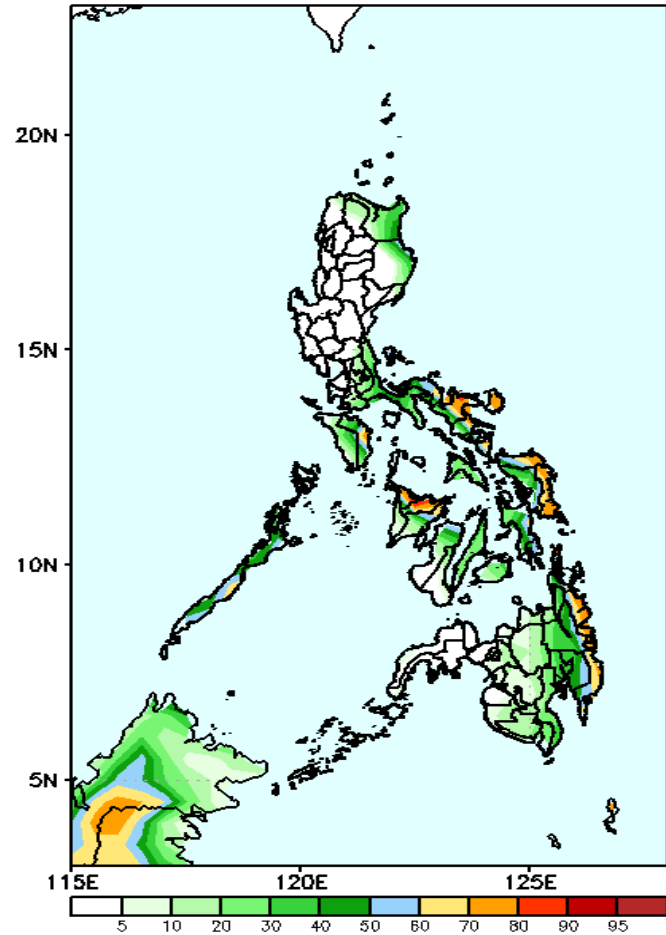


High probability of rainfall to exceed 50mm in Apayao, Cagayan, Isabela, Mindoro, Bicol Region, in most parts of Visayas and eastern Mindanao while less likely for the rest of the country during the forecast period.

Exceedance Probability > 100/150/200 mm

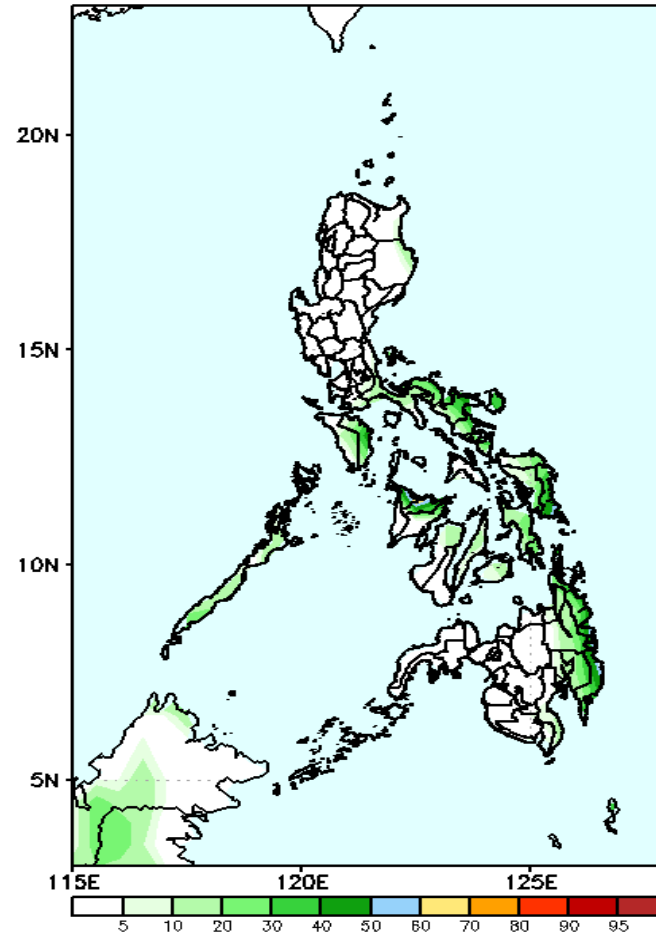
Week 1: Dec 31, 2020-Jan 6, 2021

GEFS Week-1 Exceedance Prob. > 100mm
Valid: 20201231 - 20210106



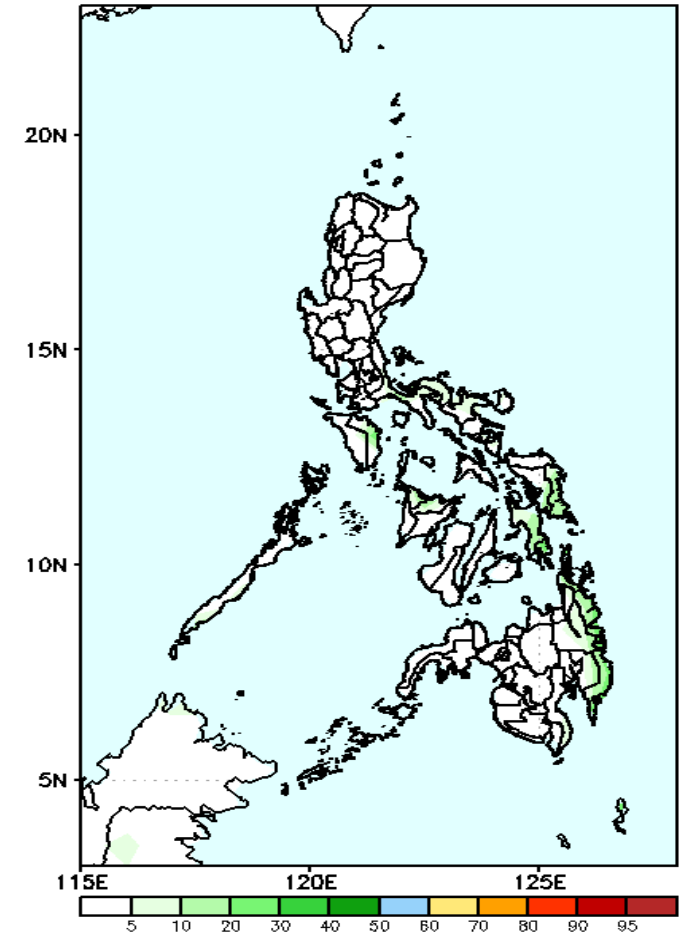
Less probability of rainfall to exceed 100mm in most parts of the country except in Camarines Sur, Catanduanes, eastern Visayas, Capiz & Aklan where there is 60-85% probability during the forecast period.

GEFS Week-1 Exceedance Prob. > 150mm
Valid: 20201231 - 20210106



Less probability of rainfall to exceed 150mm in most parts of the country during the forecast period.

GEFS Week-1 Exceedance Prob. > 200mm
Valid: 20201231 - 20210106



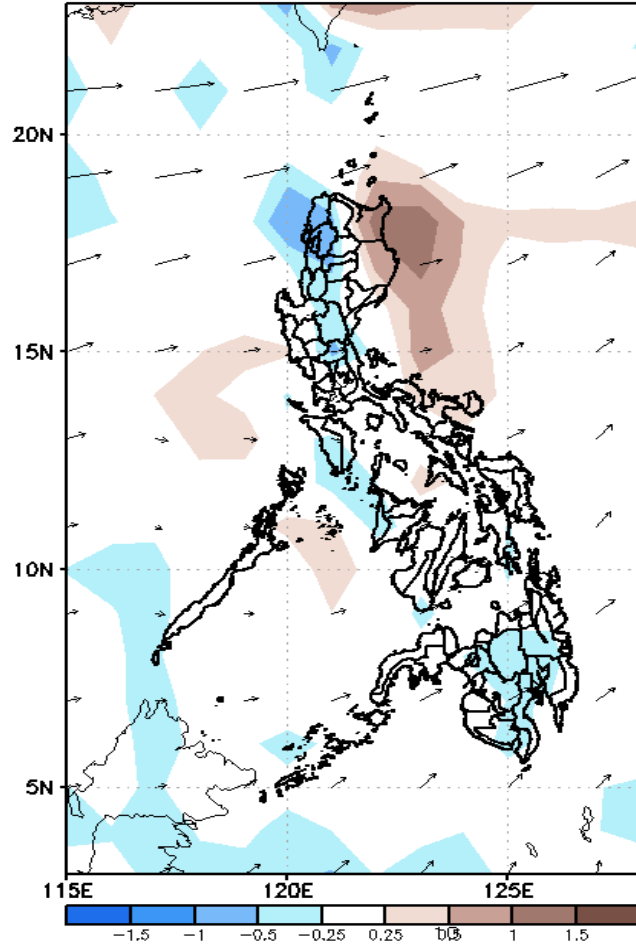
Less probability of rainfall to exceed 200mm in most parts of the country during the forecast period.



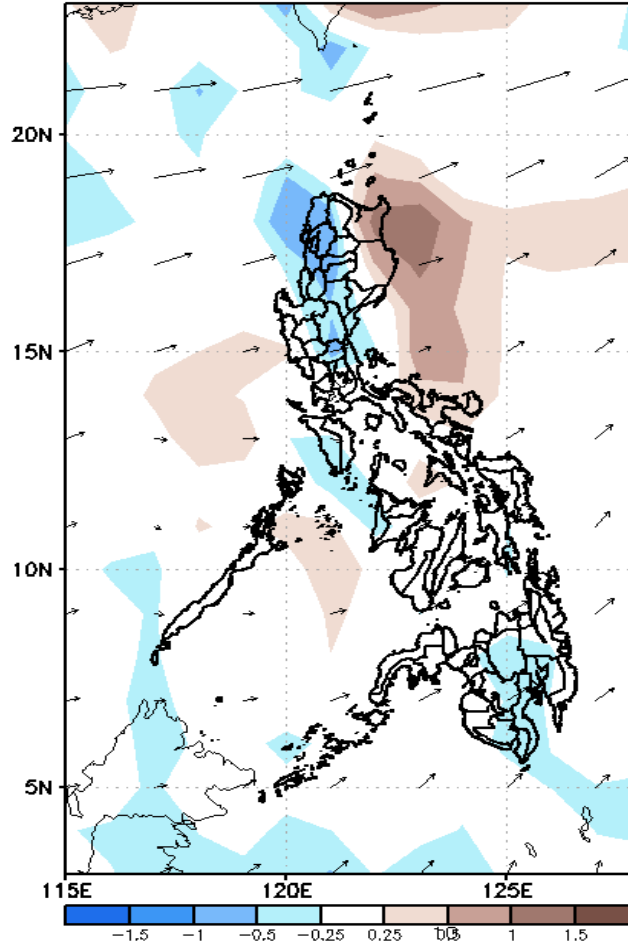
GEFS Week-2 Forecasts: Divergence & Wind Anomaly

Week 2: January 7-13, 2021

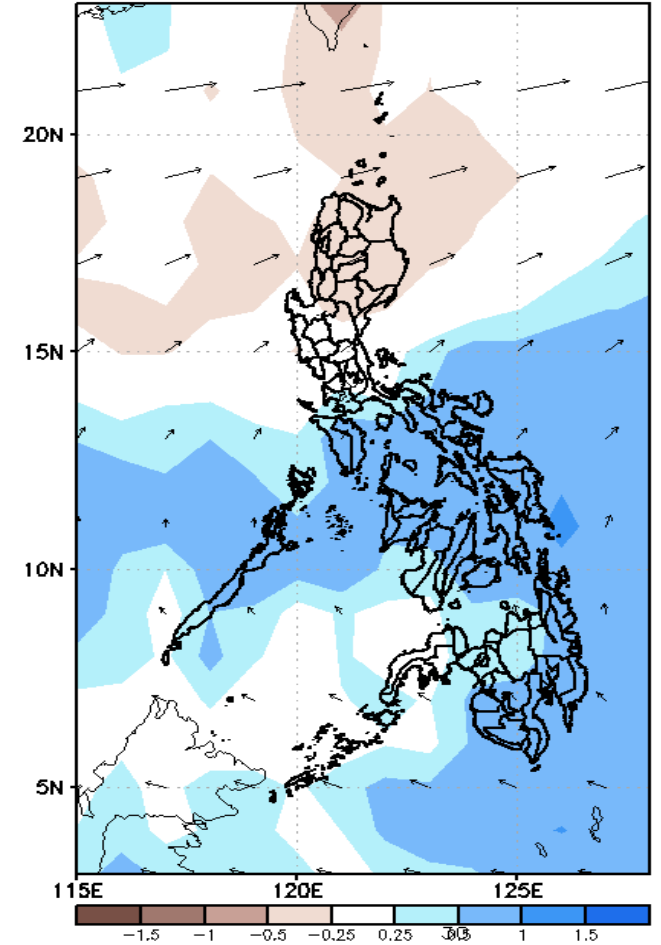
GEFS Week-2 850-hPa Divergence and Wind Anom
Valid: 20210107 - 20210113



GEFS Week-2 700-hPa Divergence and Wind Anom
Valid: 20210107 - 20210113



GEFS week-2 200-hPa Divergence and Wind Anom
Valid: 20210107 - 20210113



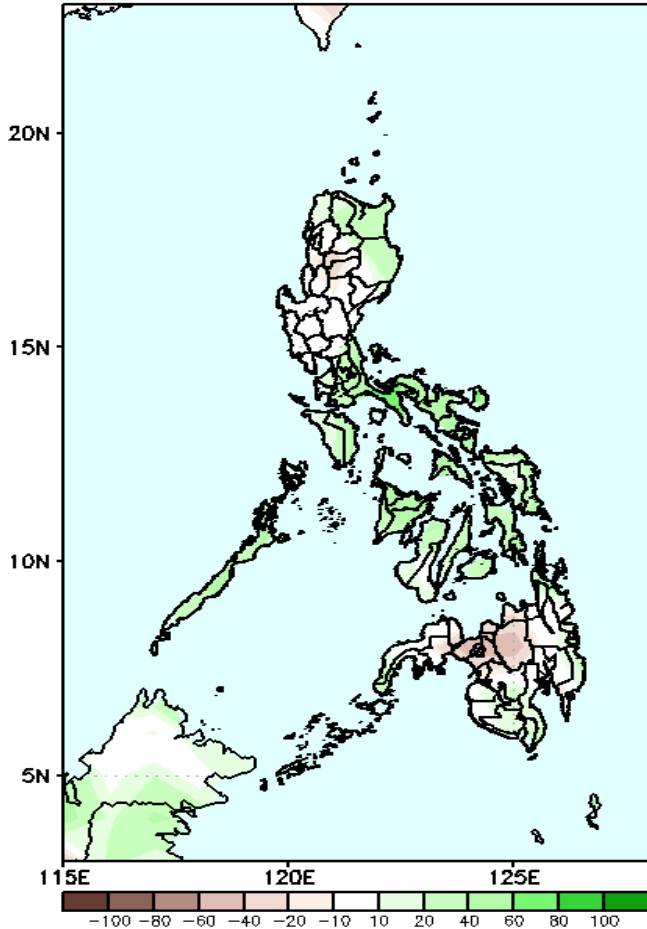
Upper and low level Divergence suggest likelihood of precipitation in most parts of the country. Northeast Monsoon affecting most parts of Luzon while easterlies affecting Visayas and Mindanao during the forecast period.



Precipitation Anomaly and Exceedance Probability > 25/50 mm

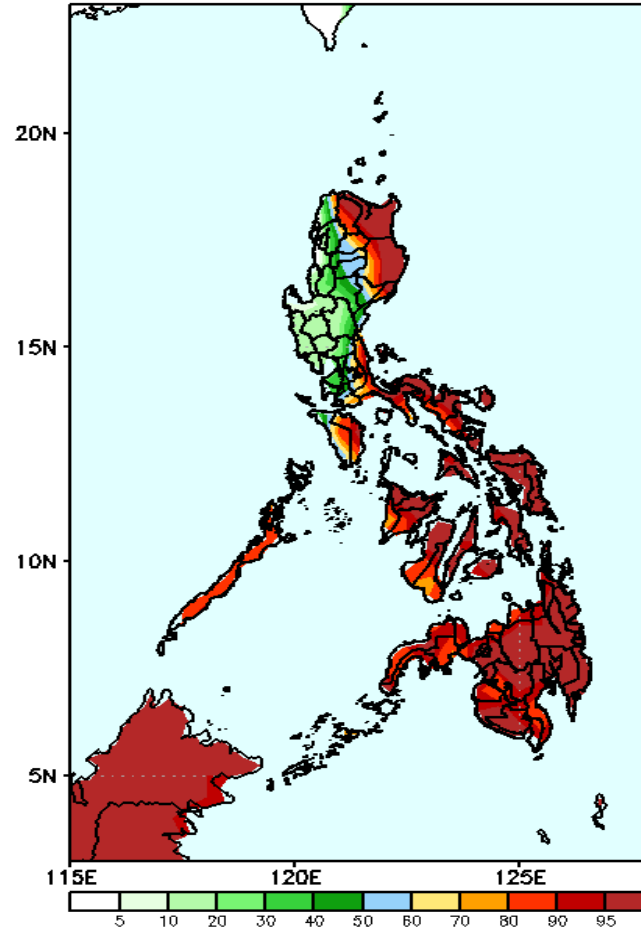
Week 2: January 7-13, 2021

GEFS Week-2 Precip Anomaly
Valid: 20210107 - 20210113



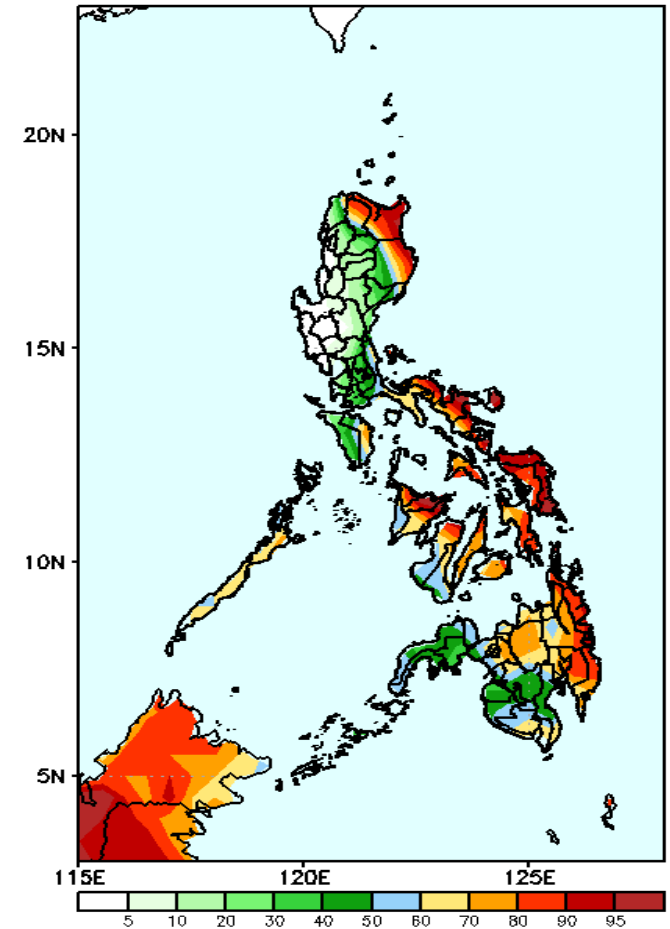
Increase of rainfall of 40-80mm is expected in Apayao, Cagayan, Isabela, and in most parts of Visayas during the forecast period.

GEFS Week-2 Exceedance Prob. > 25mm
Valid: 20210107 - 20210113



High probability of rainfall to exceed 25mm in Apayao, Cagayan, Isabela, Southern Luzon, Bicol Region and in most parts of Visayas and Mindanao during the forecast period.

GEFS Week-2 Exceedance Prob. > 50mm
Valid: 20210107 - 20210113

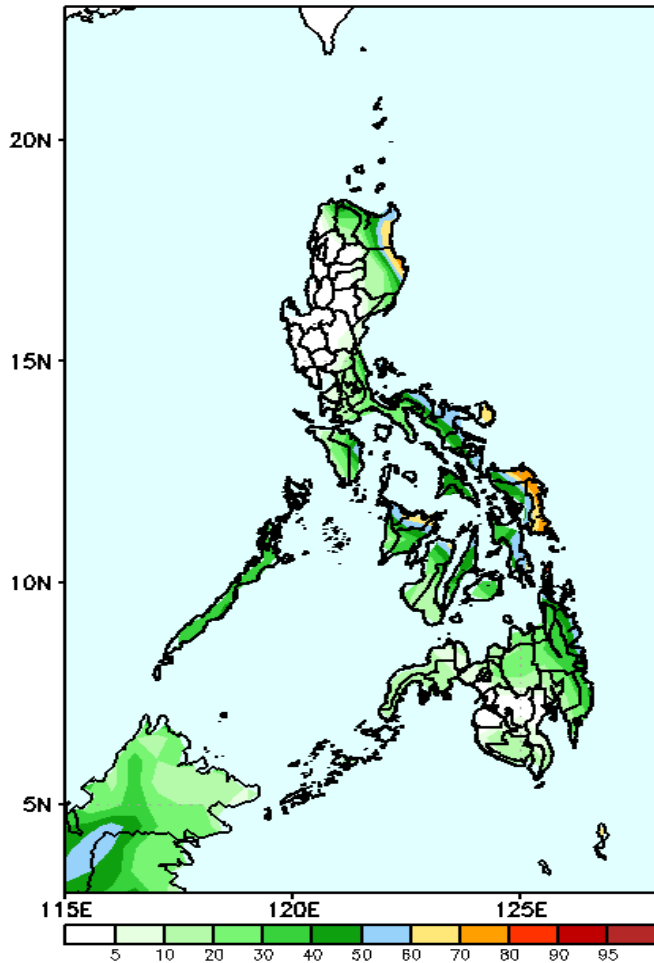


High probability of rainfall to exceed 50mm in Apayao, Cagayan, Isabela, Bicol Region, in most parts of Visayas and northern & eastern Mindanao while less likely for the rest of the country during the forecast period.

Exceedance Probability > 100/150/200 mm

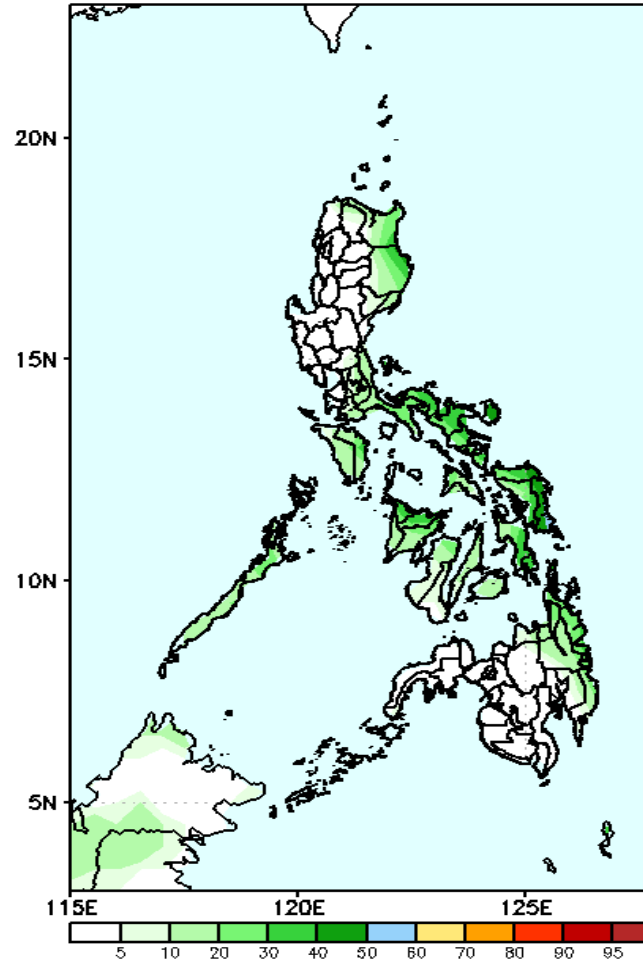
Week 2: January 7-13, 2021

GEFS Week-2 Exceedance Prob. > 100mm
Valid: 20210107 - 20210113



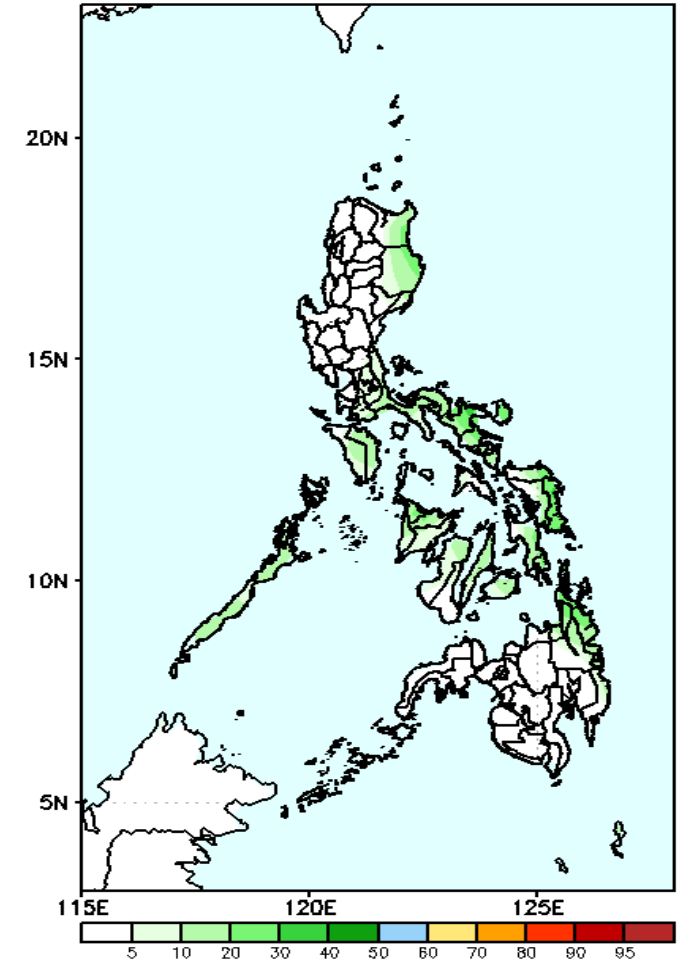
Less probability of rainfall to exceed 100mm in most parts of the country during the forecast period.

GEFS Week-2 Exceedance Prob. > 150mm
Valid: 20210107 - 20210113



Less probability of rainfall to exceed 150mm in most parts of the country during the forecast period.

GEFS Week-2 Exceedance Prob. > 200mm
Valid: 20210107 - 20210113

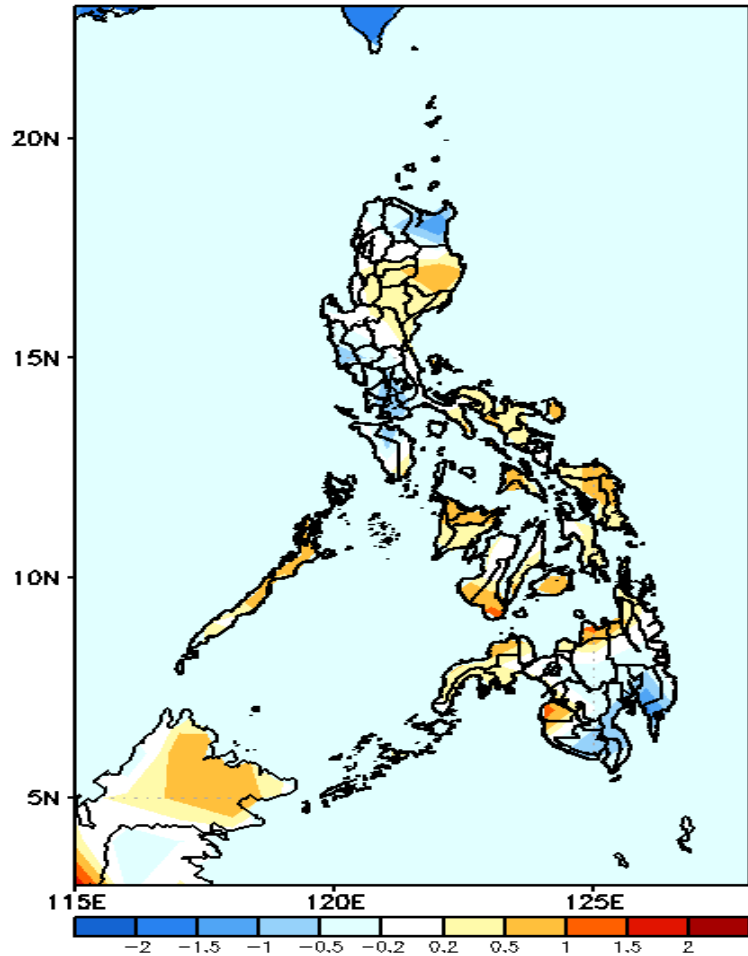


Less probability of rainfall to exceed 200mm in most parts of the country during the forecast period.



GEFS Week-1 & 2 Forecasts: T2m Anomaly

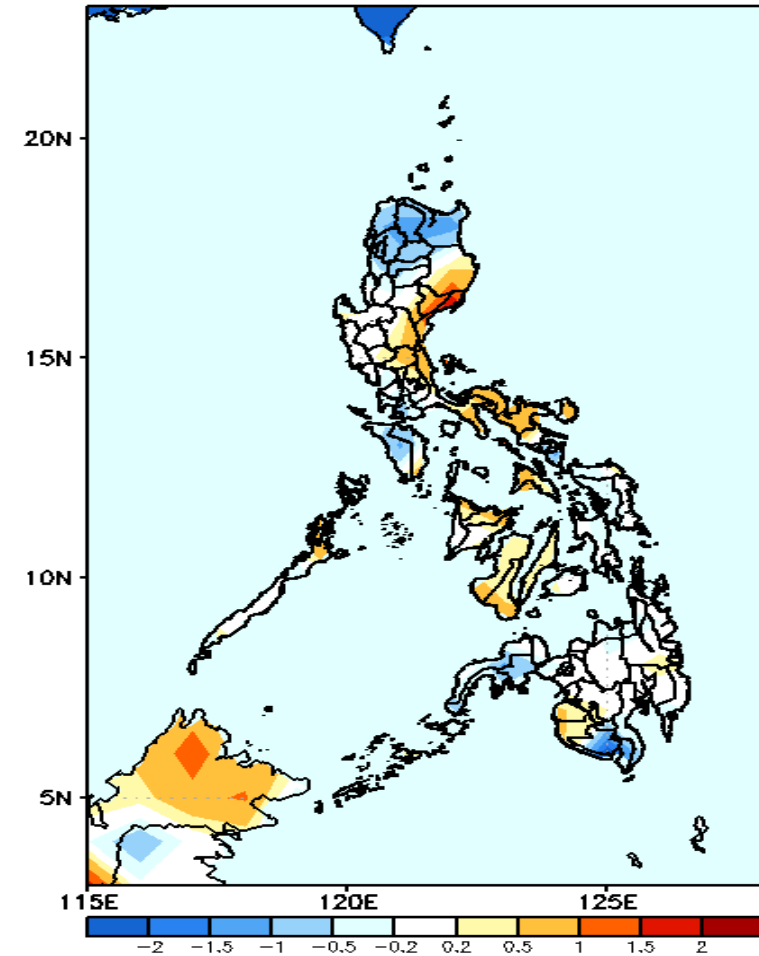
GEFS Week-1 T2m Anomaly
Valid: 20201231 - 20210106



2m Temperature Week 1: Dec 31, 2020-Jan 6, 2021

Average to slightly warmer than average surface air temperature is expected in Isabela and in most parts of Visayas and northern Mindanao while slightly cooler in Cagayan, southwestern Luzon and southern Mindanao.

GEFS Week-2 T2m Anomaly
Valid: 20210107 - 20210113



2m Temperature Week 2: January 7-13, 2021

Cooler than average surface air temperature is expected in northern Luzon, Mindoro, Zamboanga Peninsula South Cotabato and Sarangani while slightly warmer to warmer than average temperature in eastern Luzon, Bicol Region and western Visayas.