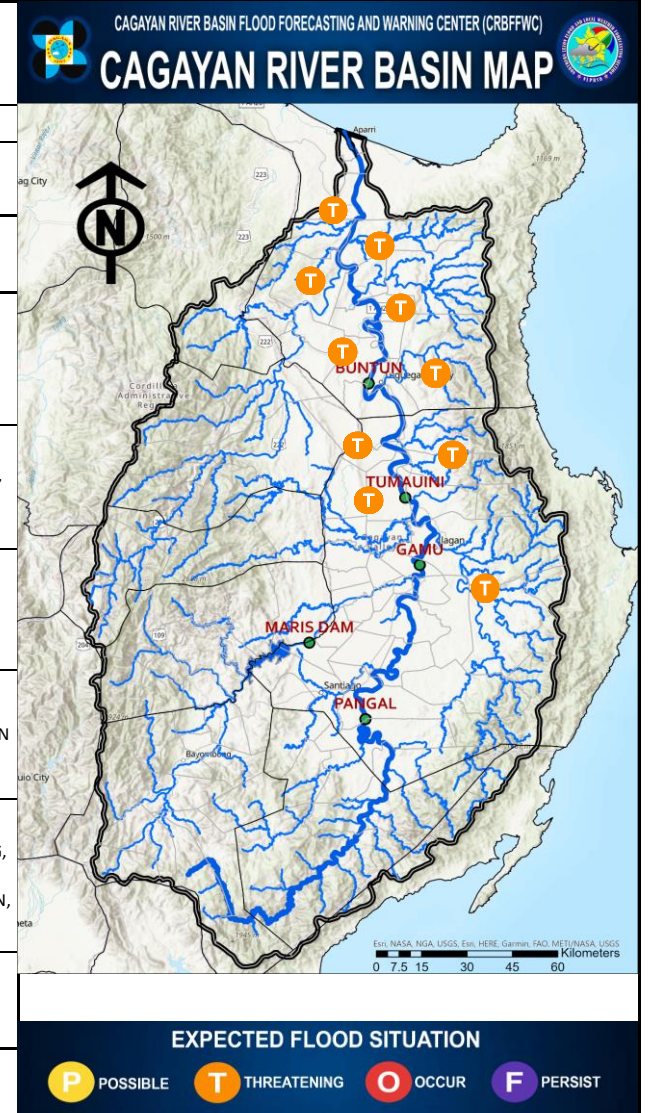




FLOOD BULLETIN NO.4 CAGAYAN RIVER BASIN				
ISSUED AT: 5:00 PM 05 December, 2024 VALID UNTIL: 5:00:00 AM TOMORROW				
WEATHER SYSTEM AFFECTING THE BASIN : Shearline				
AVERAGE BASIN RAINFALL (mm) PAST 24 HOURS ENDING AT 4:00 PM TODAY = 16.7 mm FORECAST FOR THE NEXT 12 HOURS = Light to Moderate rains				
EXPECTED HYDROLOGICAL RESPONSE			FLOOD SITUATION MESSAGE	LOW-LYING AREAS LIKELY TO BE AFFECTED
MAIN RIVER and ITS TRIBUTARIES	WATER LEVEL STATION / LOCATION	RIVER TREND AT THE STATION		
UPPER CAGAYAN INCLUDING TRIBUTARIES: GANANO and MAGAT	PANGAL STATION ECHAGUE, ISABELA	CONTINUOUS RECESSION IN WATER LEVEL Likely to recede further until tomorrow <i>(Patuloy ang pagbaba ng tubig sa kailugan)</i>	FLOODING IS NO LONGER POSSIBLE <i>(Hindi na posible ang pagbaha)</i>	SAN AGUSTIN, JONES, ECHAGUE, ALICIA, ANGADANAN, CAUAYAN, NAGUILIAN, REINA MERCEDES
	MARIS STATION RAMON, ISABELA	CONTINUOUS RECESSION IN WATER LEVEL Likely to recede further until tomorrow <i>(Patuloy ang pagbaba ng tubig sa kailugan)</i>	FLOODING IS NO LONGER POSSIBLE <i>(Hindi na posible ang pagbaha)</i>	SAN MATEO, CABATUAN, AURORA, LUNA
MIDDLE CAGAYAN INCLUDING TRIBUTARIES: SIFFU-MALLIG and PINACANAUAN RIVERS OF ILAGAN, TUMAUNI, and SAN PABLO	GAMU STATION GAMU, ISABELA	CONTINUOUS RECESSION IN WATER LEVEL Likely to recede further until tomorrow <i>(Patuloy ang pagbaba ng tubig sa kailugan)</i>	FLOODING IS NO LONGER POSSIBLE <i>(Hindi na posible ang pagbaha)</i>	GAMU, ILAGAN, SAN MARIANO
	TUMAUNI STATION TUMAUNI, ISABELA	CONTINUOUS RECESSION IN WATER LEVEL Likely to recede further until tomorrow <i>(Patuloy ang pagbaba ng tubig sa kailugan)</i>	FLOODING IS STILL THREATENING <i>(Nagbabanta parin ang pagbaha)</i>	TUMAUNI, DELFIN ALBANO, STO. TOMAS, CABAGAN, STA. MARIA, SAN PABLO
LOWER CAGAYAN INCLUDING TRIBUTARIES: PINACANAUAN DE TUGUEGARAO, CHICO, PARED, and DUMMUN	BUNTUN STATION TUGUEGARAO, CAGAYAN	SLOW RECESSION IN WATER LEVEL Now at 8.73 m, still above alarm WL ; likely to subside further and may reach below alarm WL early tomorrow <i>(Mabagal ang pagbaba ng tubig sa kailugan)</i>	FLOODING IS STILL THREATENING <i>(Nagbabanta parin ang pagbaha)</i>	PEÑABLANCA, TUGUEGARAO CITY, ENRILE, SOLANA, IGUIG, AMULUNG, ALCALA, BAGGAAO, LASAM, GATTARAN, LALLO, CAMALANIUGAN, APARRI
	NINOY AQUINO BRIDGE TUAO, CAGAYAN	CONTINUOUS RECESSION IN WATER LEVEL <i>(Patuloy ang pagbaba ng tubig sa kailugan)</i>	FLOODING IS NO LONGER POSSIBLE <i>(Hindi na posible ang pagbaha)</i>	TUAO, PIAT, STO. NIÑO
PEOPLE LIVING NEAR THE LOW-LYING AREAS PARTICULARLY THOSE ADJACENT TO AND ALONG THE ABOVE-MENTIONED RIVERS ARE ALERTED AGAINST POSSIBLE LANDSLIDES AND FLASHFLOODS AND THE DISASTER RISK REDUCTION AND MANAGEMENT COUNCILS (DRRMC) CONCERNED ARE ADVISED TO TAKE APPROPRIATE ACTIONS.				



Prepared By:

 ACP/ AEB/ JBL
 (Duty Hydrologists)