




Republic of the Philippines

DEPARTMENT OF SCIENCE AND TECHNOLOGY

Philippine Atmospheric, Geophysical and Astronomical Services

Administration (PAGASA)

PAMPANGA RIVER BASIN FLOOD FORECASTING & WARNING CENTER (PRFFWC) 
DMGC, Bgy. Maimpis, City of San Fernando, Pampanga 2000, Tel. (045) 652-5175; CP: 0999 336 6416

FLOOD BULLETIN NO. 2

**PAMPANGA RIVER BASIN & ALLIED RIVERS
 ISSUED AT 5:00 PM, 25 SEPTEMBER 2022
 (VALID UNTIL THE NEXT BULLETIN AT 5:00 AM TOMORROW)**

Average Basin Rainfall as of 4:00 PM today	Past 24-hr observed Less than 15 millimeters	Forecast 12-hr basin rainfall Between 30 to 60 millimeters
BASIN'S LIKELY RESPONSE / RELATED IMPACTS		
WATER LEVEL STATION	RIVER / SWAMP WATER LEVEL (WL) TREND AT STATION	FLOOD SITUATION MESSAGE (POSSIBLE IMPACTS) & AREAS LIKELY TO BE AFFECTED
Pampanga River at Sapang Buho station , Palayan City	Now at 0.39m, still below 3.70m Alert WL; slow to gradual rise to occur starting tonight and likely to remain below Alert WL until early tomorrow morning	Pluvial floods (submerged roads, croplands, possible riverside erosion) – Gabaldon, Rizal, Laur, Bongabon, Palayan City, Cabanatuan City, Sta. Rosa
Peñaranda River at Peñaranda Station , Nueva Ecija	Still below the 0 of the staff gage at the station (2.50m Alert WL). Possible slow to gradual rise is likely to occur beginning tonight.	Possible Pluvial floods (submerged roads, croplands, possible riverside erosion) – Gen. Tinio, Peñaranda, San Leonardo, Gapan City
Pampanga River at San Isidro station	Now at 1.26m still below 5.0m Alert WL. Slow rise to continue and to remain below Alert WL until tomorrow morning.	Pluvial floods (submerged roads, croplands, possible riverside erosion) – San Isidro, Jaen, Cabiao
Tributary Rio Chico River at Zaragoza Station	Now at 3.14 m (above 3.00m Alert WL); slow rise to continue and to stay w/in Alert WL limits until early tomorrow morning.	Pluvial floods (submerged roads, croplands, possible riverside erosion) - La Paz, Licab, Aliaga, Quezon, Zaragoza, San Antonio
Candaba Swamp Area at Candaba station	Now at 3.49m which is now close to 3.5m Alert WL . Slow filling-up of swamp WL & to exceed Alert WL in a few hours. To remain w/in Alert WL limits until early tomorrow morning.	Pluvial floods (submerged roads, croplands, possible riverside erosion) – San Miguel, San Ildefonso, Candaba, San Luis, San Simon, Apalit
Pampanga River at Arayat Station	Now at 4.97m (still below 5.0m Alert WL) very slow rise to continue & likely to reach Alert WL w/in the next several hours. To remain w/in Alert WL limits until early tomorrow morning.	Pluvial floods (submerged roads, croplands, possible riverside erosion) - Arayat, San Simon, San Luis, Apalit, Calumpit
Pampanga River at Sulipan Station ; Tributary Angat River & Pampanga Delta areas	Now at 2.37m (below 2.60 Alert WL); very slow fluctuating rise within & close to Alert WL (tide-influenced); Angat River is likely to rise slowly beginning late tonight.	Possible Coastal / Riverine or Fluvial floods due to tides (possible riverside erosion); Pluvial floods (submerged roads, croplands) - Apalit, Masantol, Macabebe, Hagonoy, Calumpit, Paombong, Malolos City; Areas along Angat River – Norzagaray, Angat, Bustos, San Ildefonso, Baliuag, Plaridel, Pulilan

"tracking the sky...helping the country"

Science Garden Compound, BIR Road, Brgy. Central, Quezon City, Metro Manila, Philippines 1100

Tel. No. (02) 8284-08-00
 Website: <http://bagong.pagasa.dost.gov.ph>



Republic of the Philippines

DEPARTMENT OF SCIENCE AND TECHNOLOGY

Philippine Atmospheric, Geophysical and Astronomical Services

Administration (PAGASA)

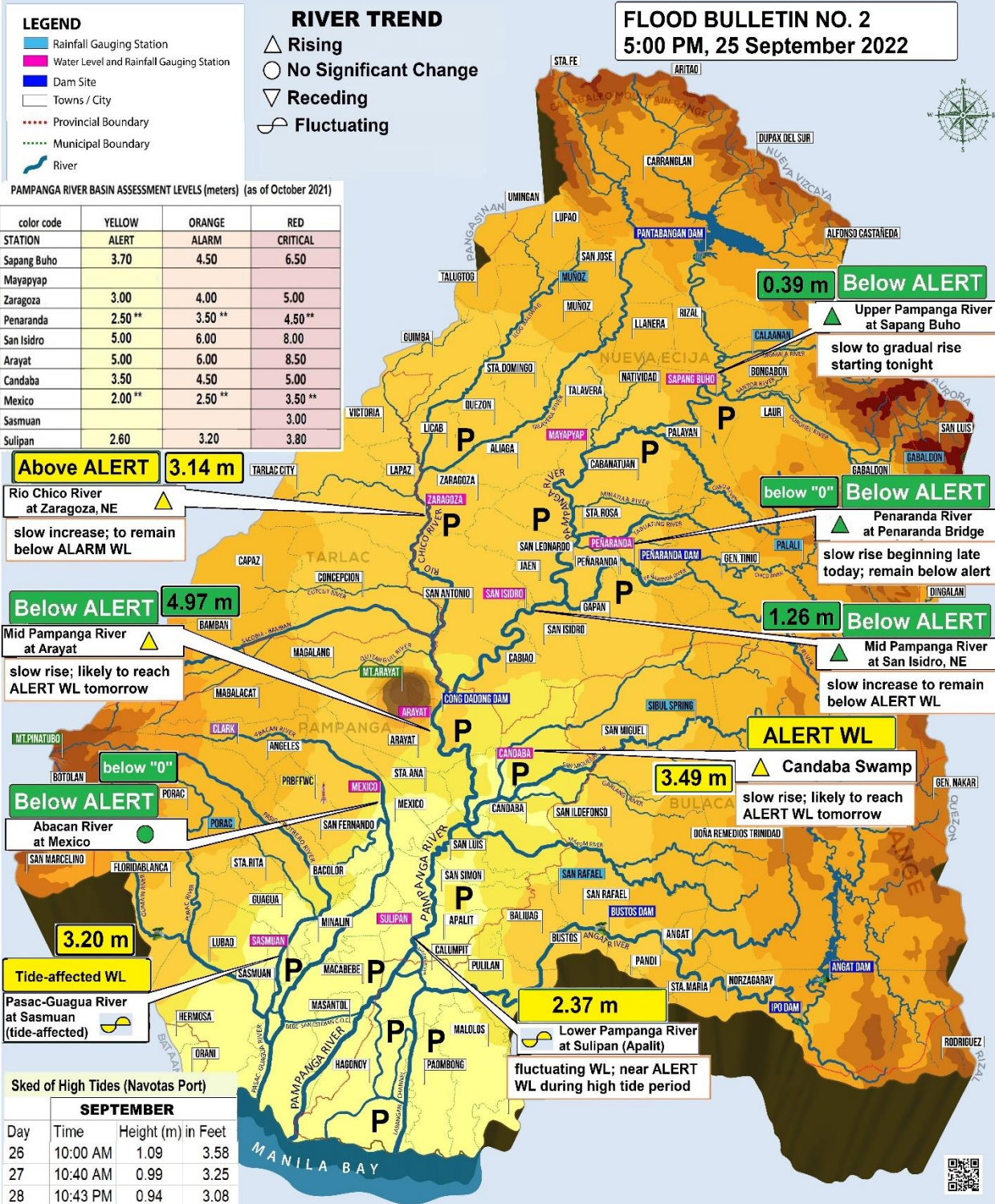
Pasac-Guagua River Sub Basin: Abacan, Porac-Gumain, Pasig-Potrero Rivers (Sasmuan Station)	Sasmuan WL at 3.20m above 3.0m Critical WL ; fluctuating WL within & close to Critical WL (tide-influenced)	Possible Riverine / Fluvial floods due to tides (possible riverside erosion) - Sasmuan, Guagua, Lubao, Minalin, Mexico, Sto.Tomas, Sta. Ana, City of San Fernando, Bacolor, Sta. Rita, Macabebe, Masantol, Floridablanca
For preparedness and mitigation purposes and considering the forecasted track of Tropical Cyclone “KARDING” which is likely to affect the Pampanga River Basin later today , the public and the Local Disaster Risk Reduction and Management Councils (LDRRMOs) within the said Basin are strongly advised to take the necessary precautionary measures to mitigate the adverse immediate impacts of the possible hazards associated with said tropical disturbance particularly in the above mentioned areas; to continue monitoring for heavy rainfall warnings, thunderstorm / rainfall advisories, and other severe weather information specific to your area , other related products issued by local PAGASA Regional Services Division.		

Prepared by: RPY

Checked by: HTH



Pampanga River Basin HYDROLOGICAL SCENARIO MAP



Flood Situation: P – Possible; T – Threatening; O – to Occur; F - Persist