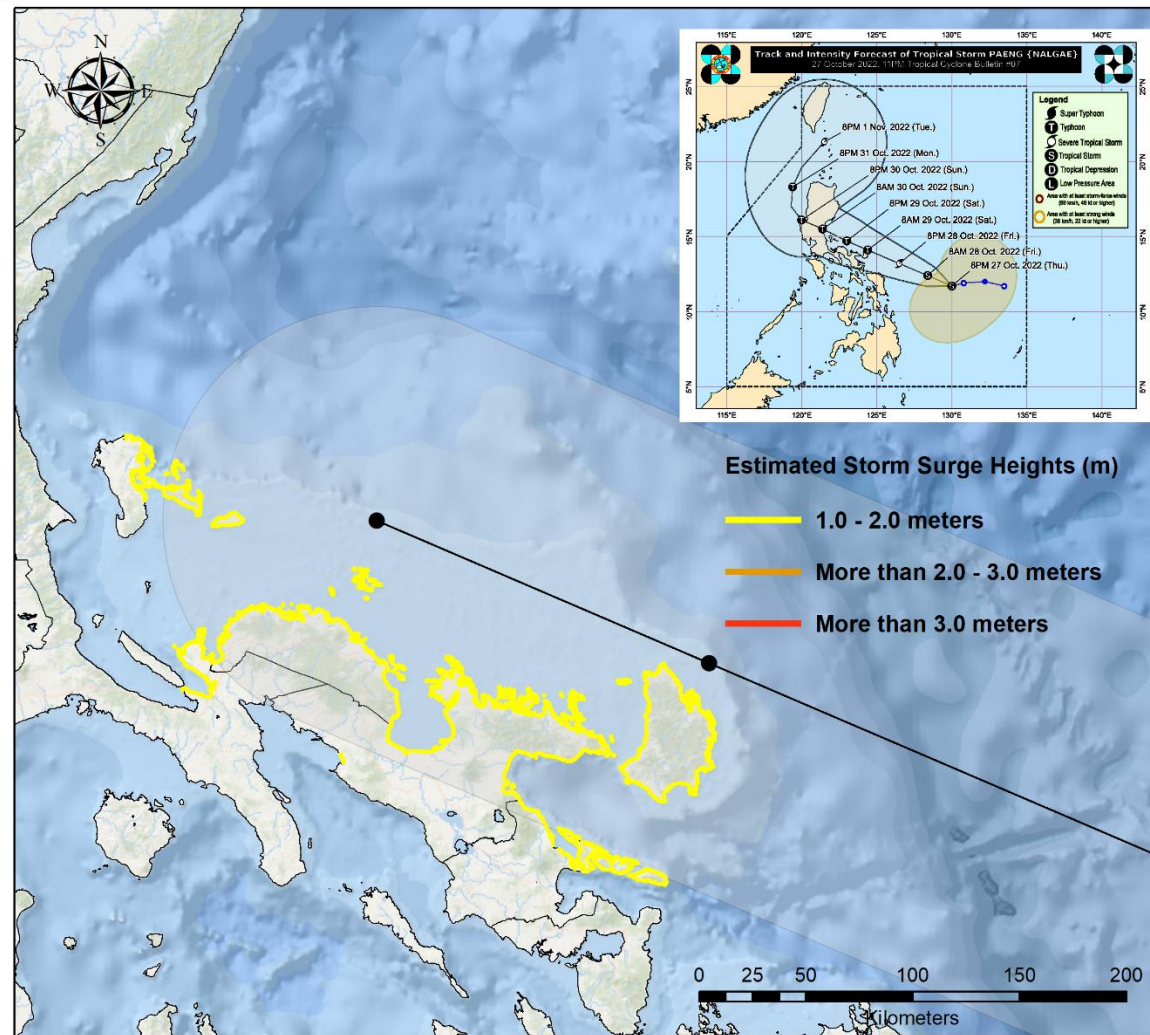


Tropical Storm Paeng {Nalgae} 48 Hour Forecast

Storm Surge Watch #03

Philippine Atmospheric Geophysical
and Astronomical Services
Administration



Tropical Storm Paeng
Issued: 02:00 AM, Friday
October 28, 2022
(Based on PAGASA forecast track
as of 11 PM October 27, 2022)

Storm Surge Watch #03

A MINIMAL to MODERATE risk of storm surge may occur in the next 48-hours. However, residents along the coast are advised to take extra precautions due to high waves in the municipalities of:

See Attached List

Recommended Action

Residents living in the low-lying coastal communities are still advised to:

- > Stay away from the coast or beach;
- > Cancel all marine activities;
- > Be aware and follow the latest updates from PAGASA;

NOTE: Inundation / flood depth due to storm surge depends on the topography of the area.

“tracking the sky... helping the country”

Postal Address: P.O. Box 3278 Manila

Tel No. (63-2) 929-4865, 922-1992 (w/Fax) & 434-9040



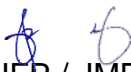
REPUBLIC OF THE PHILIPPINES
Department of Science and Technology
Philippine Atmospheric, Geophysical and
Astronomical Services Administration (PAGASA)
 Science Garden, Agham Road, Diliman, Quezon City 1100


STORM SURGE INFORMATION STORM SURGE WATCH #03 FOR: TROPICAL STORM PAENG (NALGAE) ISSUED AT 2 AM, 28 October 2022 (Valid until the next storm surge information to be issued at 8 AM today)				
Estimated Storm Surge Heights	Provinces	Low Lying Coastal Areas in the Municipalities of:	IMPACTS	ADVICE/Actions to Take
1.0 – 2.0 meters	Albay	BACACAY CITY OF TABACO MALINAO RAPU-RAPU TIWI	Moderate damage to communities, coastal/marine infrastructures and disruptions to all marine-related activities.	All marine activities must be cancelled. Public is advised to follow the latest updates on Tropical Cyclone Bulletins and Storm Surge Warnings from PAGASA.
	Camarines Norte	BASUD CAPALONGA DAET (Capital) JOSE PANGANIBAN MERCEDES PARACALE SANTA ELENA TALISAY VINZONS		
	Camarines Sur	CABUSAO CALABANGA CARAMOAN GARCHITORENA LAGONROY PRESENTACION (PARUBCAN) SAGÑAY SAN JOSE SIPOCOT SIRUMA TIGAON TINAMBAC		
	Catanduanes	BAGAMANOC BARAS BATO CARAMORAN GIGMOTO PANDAN PANGANIBAN (PAYO) SAN ANDRES (CALOLBON) VIGA VIRAC (Capital)		

“tracking the sky... helping the country”

<p>1.0 – 2.0 meters</p>	<p>Quezon</p>	<p>BURDEOS CALAUAG JOMALIG PATNANUNGAN</p>	<p>Moderate damage to communities, coastal/ marine infrastructures and disruptions to all marine-related activities.</p>	<p>All marine activities must be cancelled.</p> <p>Public is advised to follow the latest updates on Tropical Cyclone Bulletins and Storm Surge Warnings from PAGASA.</p>
--------------------------------	----------------------	---	--	---

- *The public and the disaster risk reduction and management council concerned are advised to take appropriate actions and precautionary measures, and watch for the next storm surge information to be issued at 08PM today.*
- *Inundation/flood depth due to storm surge will depend on the topography of the area(s).*

Prepared by:  JFP / JMD

Checked by:  MCCU