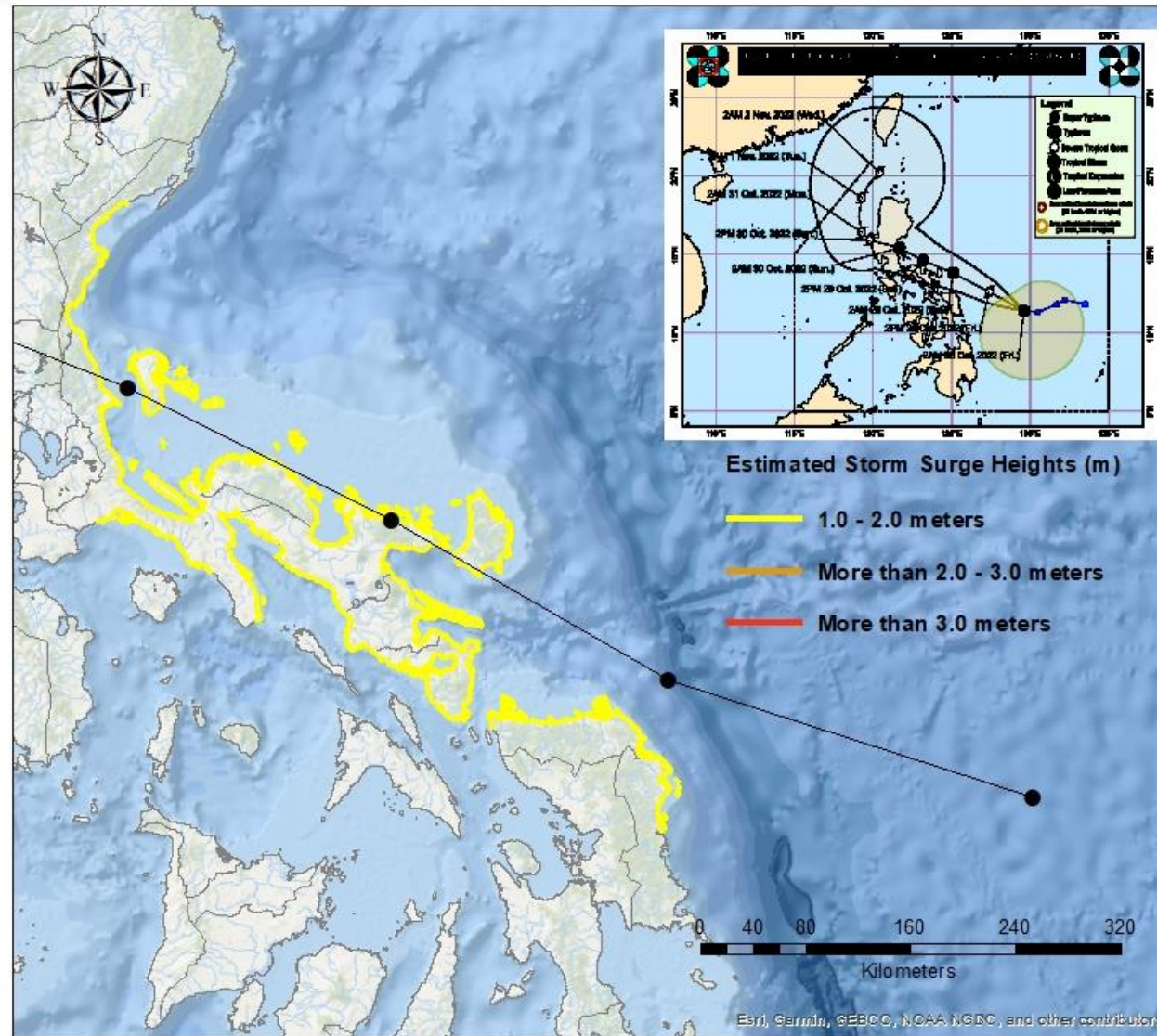


Tropical Storm Paeng {Nalgae} 24 Hour Forecast

Storm Surge Warning #02

Philippine Atmospheric Geophysical
and Astronomical Services
Administration



Tropical Storm Paeng
Issued: 2:00 PM, Friday
October 28, 2022

Storm Surge Warning #02

A MINIMAL to MODERATE risk of storm surge may occur in the next 24-hours. However, residents along the coast are advised to take extra precautions due to high waves in the municipalities of:

See Attached List

Recommended Action

Residents living in the low-lying coastal communities are still advised to:

- > Stay away from the coast or beach;
- > Cancel all marine activities;
- > Be aware and follow the latest updates from PAGASA;

NOTE: Inundation / flood depth due to storm surge depends on the topography of the area.

"tracking the sky... helping the country"

Postal Address: P.O. Box 3278 Manila

Tel No. (63-2) 929-4865, 922-1992 (w/Fax) & 434-9040



REPUBLIC OF THE PHILIPPINES
Department of Science and Technology
Philippine Atmospheric, Geophysical and
Astronomical Services Administration (PAGASA)
 Science Garden, Agham Road, Diliman, Quezon City 1100

STORM SURGE INFORMATION STORM SURGE: WARNING #02 FOR: TROPICAL STORM PAENG (NALGAE) ISSUED AT 2PM, 28 October 2022 (Valid until the next storm surge information to be issued at 8 PM today)				
Estimated Storm Surge Heights	Provinces	Low Lying Coastal Areas in the Municipalities of:	IMPACTS	ADVICE/Actions to Take
1.0 – 2.0 meters	ALBAY	BACACAY CITY OF LIGAO CITY OF TABACO LEGAZPI CITY (Capital) LIBON MALILIPOT MALINAO MANITO OAS PIO DURAN RAPU-RAPU STO. DOMINGO (LIBOG) TIWI	<ul style="list-style-type: none"> • Minimal to Moderate damage to communities, coastal/ marine infrastructures and disruptions to all marine-related activities. • Minimal to Moderate damage to communities, coastal/ marine infrastructures and disruptions to all marine-related activities. 	<ul style="list-style-type: none"> • All marine activities must be cancelled. • Public is advised to follow the latest updates on Tropical Cyclone Bulletins and Storm Surge Warnings from PAGASA. • All marine activities must be cancelled. • Public is advised to follow the latest updates on Tropical Cyclone Bulletins and Storm Surge Warnings from PAGASA.
	AURORA	BALER (Capital) DINGALAN DIPACULAO SAN LUIS		
	CAMARINES NORTE	BALATAN BASUD BATO BULA CABUSAO CALABANGA CAPALONGA CARAMOAN DAET (Capital) DEL GALLEGO GARCHITORENA JOSE PANGANIBAN LAGONoy LIBMANAN MERCEDES MINALABAC PARACALE PASACAO PRESENTACION (PARUBCAN) RAGAY		

“tracking the sky... helping the country”

1.0 – 2.0 meters		SAGÁ'AY SAN FERNANDO SAN JOSE SANTA ELENA SANTA ELENA SIPOCOT SIRUMA TALISAY TIGAON TINAMBAC VINZONS		
	CATANDUANES	BAGAMANOC BARAS BATO CARAMORAN GIGMOTO PANDAN PANGANIBAN (PAYO) SAN ANDRES (CALOLBON) VIGA VIRAC (Capital)	<ul style="list-style-type: none"> • Minimal to Moderate damage to communities, coastal/ marine infrastructures and disruptions to all marine-related activities. 	<ul style="list-style-type: none"> • All marine activities must be cancelled. • Public is advised to follow the latest updates on Tropical Cyclone Bulletins and Storm Surge Warnings from PAGASA.
	EASTERN SAMAR	CAN-AVID DOLORES ORAS SAN POLICARPO SULAT TAFT		
	NORTHERN SAMAR	ALLEN BIRI BOBON CATARMAN (Capital) GAMAY LAOANG LAPINIG LAVEZARES MAPANAS MONDRAGON PALAPAG PAMBUJAN ROSARIO SAN JOSE SAN ROQUE		

1.0 – 2.0 meters	QUEZON	AGDANGAN ALABAT ATIMONAN BUENAVISTA BURDEOS CALAUAG CATANAUAN GENERAL LUNA GENERAL NAKAR GUINAYANGAN GUMACA INFANTA JOMALIG LOPEZ LUCENA CITY (Capital) MACALELON MAUBAN PADRE BURGOS PAGBILAO PANUKULAN PATNANUNGAN PEREZ PITOGO PLARIDEL POLILLO QUEZON REAL SAN ANDRES SAN NARCISO TAGKAWAYAN UNISAN	<ul style="list-style-type: none"> • Minimal to Moderate damage to communities, coastal/ marine infrastructures and disruptions to all marine-related activities. • All marine activities must be cancelled. • Public is advised to follow the latest updates on Tropical Cyclone Bulletins and Storm Surge Warnings from PAGASA.
	SORSOGON	BARCELONA BULAN BULUSAN CASIGURAN CASTILLA CITY OF SORSOGON (Capital) DONSOL GUBAT JUBAN MAGALLANES MATNOG PILAR PRIETO DIAZ SANTA MAGDALENA	
<ul style="list-style-type: none"> • The public and the disaster risk reduction and management council concerned are advised to take appropriate actions and precautionary measures, and watch for the next storm surge information to be issued at 8 PM today. • Inundation/flood depth due to storm surge will depend on the topography of the area(s). 			


Prepared by: ENLN / VGCA / GS


Checked by: MCCU

“tracking the sky... helping the country”