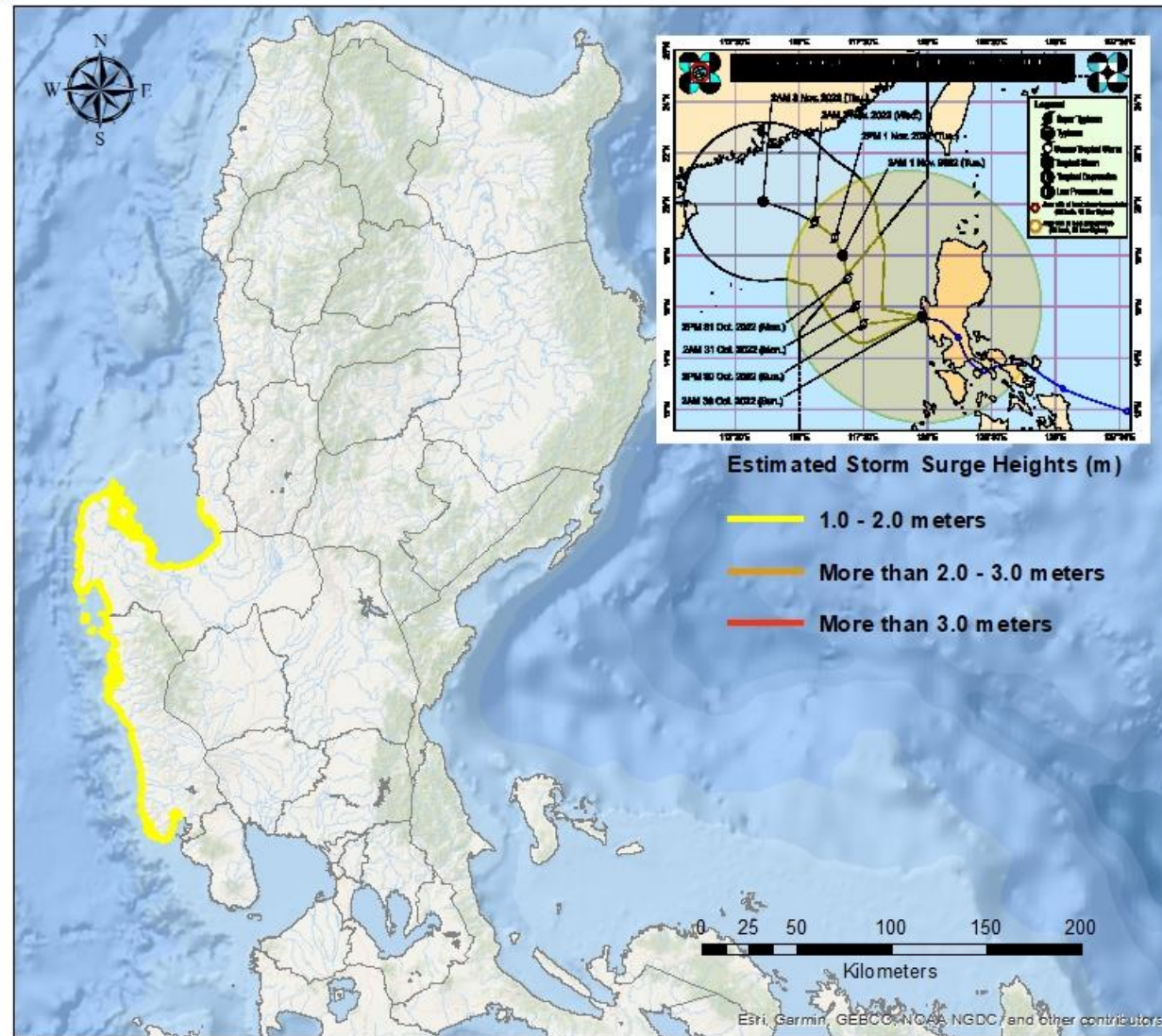


Tropical Storm Paeng {Nalgae} 24 Hour Forecast

Storm Surge Warning #09

Philippine Atmospheric Geophysical
and Astronomical Services
Administration



Tropical Storm Paeng
Issued: 8:00 AM, Saturday
October 30, 2022

Storm Surge Warning #09

MINIMAL risk of storm surge
may occur in the next 24-hours.
However, residents along the coast
are advised to take extra
precautions due to high waves
in the municipalities of:

See Attached List

Recommended Action

Residents living in the low-lying
coastal communities are still
advised to:

- > Stay away from the coast or beach;
- > Cancel all marine activities;
- > Be aware and follow the latest updates from PAGASA;

NOTE: Inundation / flood depth due to storm surge depends on the topography of the area.

"tracking the sky... helping the country"

Postal Address: P.O. Box 3278 Manila

Tel No. (63-2) 929-4865, 922-1992 (w/Fax) & 434-9040



REPUBLIC OF THE PHILIPPINES
Department of Science and Technology
Philippine Atmospheric, Geophysical and
Astronomical Services Administration (PAGASA)
Science Garden, Agham Road, Diliman, Quezon City 1100

STORM SURGE INFORMATION STORM SURGE: WARNING #09 FOR: TROPICAL STORM PAENG (NALGAE) ISSUED AT 8AM, 30 October 2022 (Valid until the next storm surge information to be issued at 2 PM today)				
Estimated Storm Surge Heights	Provinces	Low Lying Coastal Areas in the Municipalities of:	IMPACTS	ADVICE/Actions to Take
1.0 – 2.0 meters	LA UNION	AGOO ROSARIO SANTO TOMAS	• Minimal to Moderate damage to communities, coastal/marine infrastructures and disruptions to all marine-related activities.	• All marine activities must be cancelled. • Public is advised to follow the latest updates on Tropical Cyclone Bulletins and Storm Surge Warnings from PAGASA.
	PANGASINAN	AGNO ANDA BANI BINMALEY BOLINAO BURGOS ALAMINOS DAGUPAN CITY DASOL INFANTA LABRADOR LINGAYEN SAN FABIAN SUAL		
	ZAMBALES	BOTOLAN CABANGAN CANDELARIA IBA MASINLOC		
<ul style="list-style-type: none">• The public and the disaster risk reduction and management council concerned are advised to take appropriate actions and precautionary measures, and watch for the next storm surge information to be issued at 2 PM today.• Inundation/flood depth due to storm surge will depend on the topography of the area(s).				

Prepared by: MDPC / GS

Checked by: MCCU

“tracking the sky... helping the country”