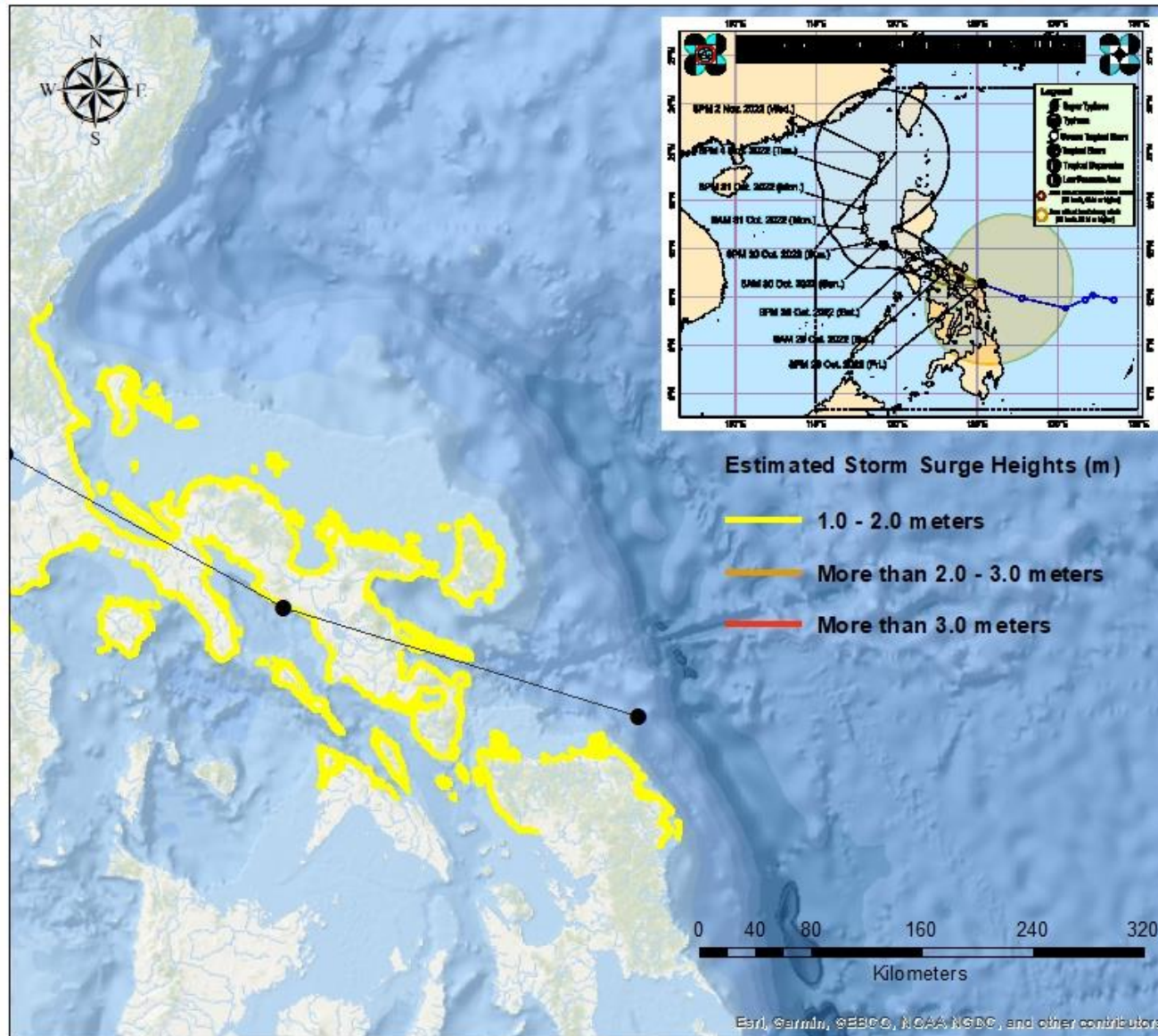


Tropical Storm Paeng {Nalgae} 24 Hour Forecast

Storm Surge Warning #04

Philippine Atmospheric Geophysical
and Astronomical Services
Administration



Tropical Storm Paeng
Issued: 2:00 AM, Saturday
October 29, 2022

Storm Surge Warning #04

A MINIMAL to MODERATE risk of storm surge may occur in the next 24-hours. However, residents along the coast are advised to take extra precautions due to high waves in the municipalities of:

See Attached List

Recommended Action

Residents living in the low-lying coastal communities are still advised to:

- > Stay away from the coast or beach;
- > Cancel all marine activities;
- > Be aware and follow the latest updates from PAGASA;

NOTE: Inundation / flood depth due to storm surge depends on the topography of the area.

"tracking the sky."

Postal Address: P.O. Box 3278 Manila

Tel No. (63-2) 929-4865, 922-1992 (w/Fax) & 434-9040



REPUBLIC OF THE PHILIPPINES
Department of Science and Technology
Philippine Atmospheric, Geophysical and
Astronomical Services Administration (PAGASA)
 Science Garden, Agham Road, Diliman, Quezon City 1100

STORM SURGE INFORMATION STORM SURGE: WARNING #04 FOR: TROPICAL STORM PAENG (NALGAE) ISSUED AT 2AM, 29 October 2022 (Valid until the next storm surge information to be issued at 8 AM today)				
Estimated Storm Surge Heights	Provinces	Low Lying Coastal Areas in the Municipalities of:	IMPACTS	ADVICE/Actions to Take
1.0 – 2.0 meters	ALBAY	BACACAY CITY OF LIGAO CITY OF TABACO LEGAZPI CITY (Capital) LIBON MALILIPOT MALINAO MANITO OAS PIO DURAN RAPU-RAPU STO. DOMINGO (LIBOG) TIWI	<ul style="list-style-type: none"> • Minimal to Moderate damage to communities, coastal/ marine infrastructures and disruptions to all marine-related activities. • Minimal to Moderate damage to communities, coastal/ marine infrastructures and disruptions to all marine-related activities. 	<ul style="list-style-type: none"> • All marine activities must be cancelled. • Public is advised to follow the latest updates on Tropical Cyclone Bulletins and Storm Surge Warnings from PAGASA. • All marine activities must be cancelled. • Public is advised to follow the latest updates on Tropical Cyclone Bulletins and Storm Surge Warnings from PAGASA.
	AURORA	DINGALAN SAN LUIS		
	BATANGAS	BALAYAN BATANGAS CITY (Capital) BAUAN CALACA CALATAGAN LEMERY LIAN LOBO MABINI NASUGBU SAN JUAN SAN LUIS SAN PASCUAL TINGLOY		
	CAMARINES NORTE	BASUD CAPALONGA JOSE PANGANIBAN MERCEDES PARACALE SANTA ELENA TALISAY		

“tracking the sky... helping the country”

		VINZONS		
	CAMARINES SUR	BALATAN BULA CABUSAO CALABANGA CARAMOAN DEL GALLEGO GARCHITORENA LAGONoy LIBMANAN LUPI MINALABAC PASACAO PRESENTACION (PARUBCAN) RAGAY SAGĀ'AY SAN FERNANDO SAN JOSE SIPOCOT SIRUMA TIGAON TINAMBAC		
1.0 – 2.0 meters	CATANDUANES	BAGAMANOC BARAS BATO CARAMORAN GIGMOTO PANDAN PANGANIBAN (PAYO) SAN ANDRES (CALOLBON) VIGA VIRAC (Capital)	<ul style="list-style-type: none"> • Minimal to Moderate damage to communities, coastal/ marine infrastructures and disruptions to all marine-related activities. 	<ul style="list-style-type: none"> • All marine activities must be cancelled. • Public is advised to follow the latest updates on Tropical Cyclone Bulletins and Storm Surge Warnings from PAGASA.
	EASTERN SAMAR	ARTECHE CAN-AVID DOLORES ORAS SAN JULIAN SAN POLICARPO SULAT TAFT		
	MARINDUQUE	BOAC (Capital) GASAN BUENAVISTA MOGPOG SANTA CRUZ TORRIJOS		
	MASBATE	AROROY BALENO BATUAN CITY OF MASBATE (Capital) CLAVERIA MOBO MONREAL SAN FERNANDO SAN JACINTO		

"tracking the sky... helping the country"

		SAN PASCUAL		
	NORTHERN SAMAR	ALLEN BIRI CAPUL GAMAY LAOANG LAPINIG LAVEZARES MAPANAS MONDRAGON PALAPAG PAMBUJAN ROSARIO SAN ANTONIO SAN ISIDRO SAN JOSE SAN ROQUE SAN VICENTE VICTORIA		
1.0 – 2.0 meters	QUEZON	AGDANGAN ALABAT ATIMONAN BUENAVISTA BURDEOS CALAUAG CATANAUAN GENERAL LUNA GENERAL NAKAR GUINAYANGAN GUMACA INFANTA JOMALIG LOPEZ LUCENA CITY (Capital) MACALELON MAUBAN MULANAY PAGBILAO PANUKULAN PATNANUNGAN PEREZ PITOGO PLARIDEL POLILLO QUEZON REAL SAN ANDRES SAN FRANCISCO (AURORA) SAN NARCISO SARIAYA TAGKAWAYAN	<ul style="list-style-type: none"> • Minimal to Moderate damage to communities, coastal/ marine infrastructures and disruptions to all marine-related activities. 	<ul style="list-style-type: none"> • All marine activities must be cancelled. • Public is advised to follow the latest updates on Tropical Cyclone Bulletins and Storm Surge Warnings from PAGASA.
	SAMAR (WESTERN SAMAR)	CALBAYOG CITY STA. MARGARITA		

"tracking the sky... helping the country"

	SORSOGON	BARCELONA BULAN BULUSAN CASIGURAN CASTILLA CITY OF SORSOGON (Capital) DONSOL GUBAT JUBAN MAGALLANES MATNOG PILAR PRIETO DIAZ SANTA MAGDALENA		
<ul style="list-style-type: none"> • <i>The public and the disaster risk reduction and management council concerned are advised to take appropriate actions and precautionary measures, and watch for the next storm surge information to be issued at 8 AM today..</i> • <i>Inundation/flood depth due to storm surge will depend on the topography of the area(s).</i> 				



Prepared by: MDPC



Checked by: ENLN