



TROPICAL CYCLONE PRELIMINARY SUMMARY

Tropical Depression GARDO

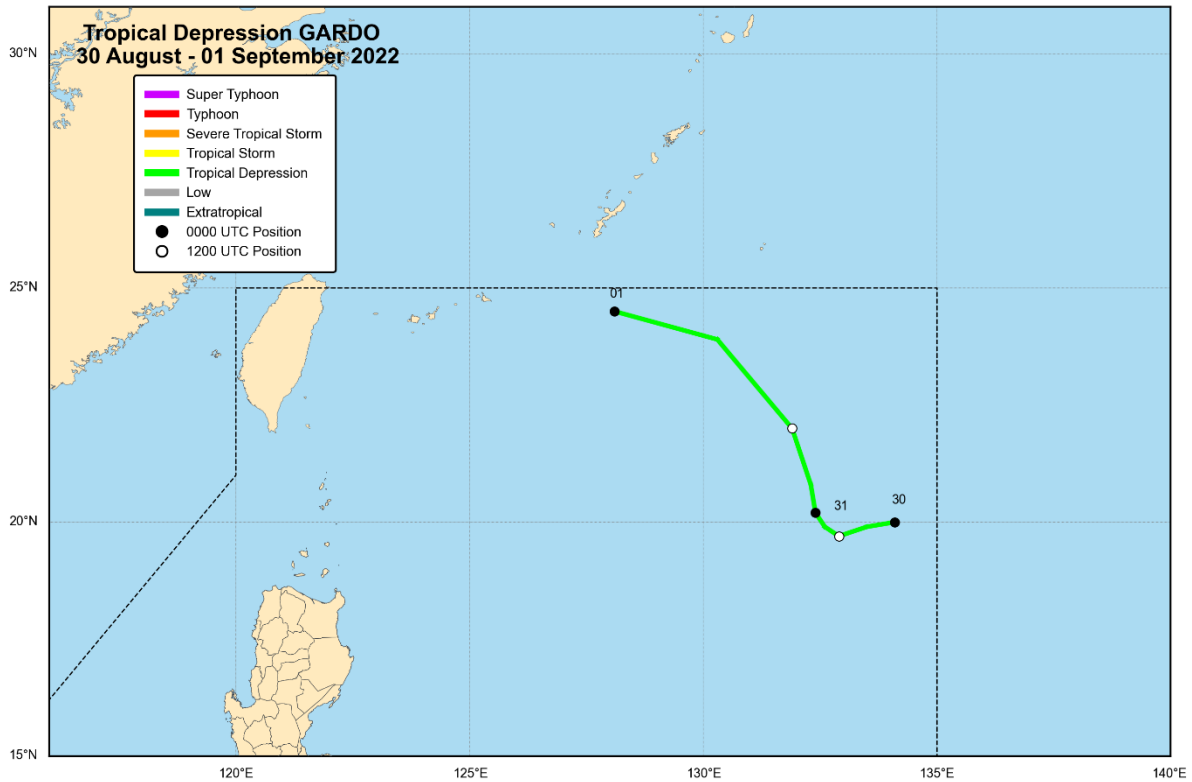


Fig. 1. Preliminary best track positions and intensities of Tropical Depression GARDO. Line color indicates the category of tropical cyclone. Shaded circles with date labels indicated 00 UTC positions while open circles indicate 12 UTC positions.

Meteorological Summary

- First tracked as a disturbance: 1200 UTC, 29 August 2022
- Developed into a tropical depression: 0000 UTC, 30 August 2022
- Weakened into a remnant low: 0000 UTC, 01 September 2022
- Entered the Philippine Area of Responsibility: 0000 UTC, 30 August 2022
- Exited the PAR: 0000 UTC, 01 September 2022
- Duration
 - Within the PAR: 2 days
 - Lifetime¹: 2 days
- Peak intensity and category:
 - Within the PAR: 30 kt (55 km/h), Tropical Depression
 - Lifetime: 30 kt (55 km/h), Tropical Depression
- Reported landfalls²: None

¹ Lifetime is the period from the development into a tropical depression to its weakening into a remnant low or its transitioning into an extratropical low.

² Reported landfalls in the Philippines

Disclaimer: This summary is based on both warning-related information and near-real time post-analysis of the tropical cyclone in question. As such, the information provided herein are considered **preliminary only** and will be superseded by the information that will become available once the **Annual Report on Philippine Tropical Cyclones (2022 Edition)** is released.



Extremes of Surface Meteorological Observations in the Philippines

Highest peak gust over land³: None

Lowest sea level pressure over land: None

Highest 24-hour rainfall:

- Laoag City, Ilocos Norte: 91.8 mm, 01 September 2022
- Basco, Batanes: 85.4 mm, 01 September 2022
- Itbayat, Batanes: 76.0 mm, 01 September 2022

Highest cumulative rainfall while the tropical cyclone was in the PAR:

- Basco, Batanes: 120.0 mm
- Laoag City, Ilocos Norte: 91.8 mm
- Iba, Zambales: 87.8 mm

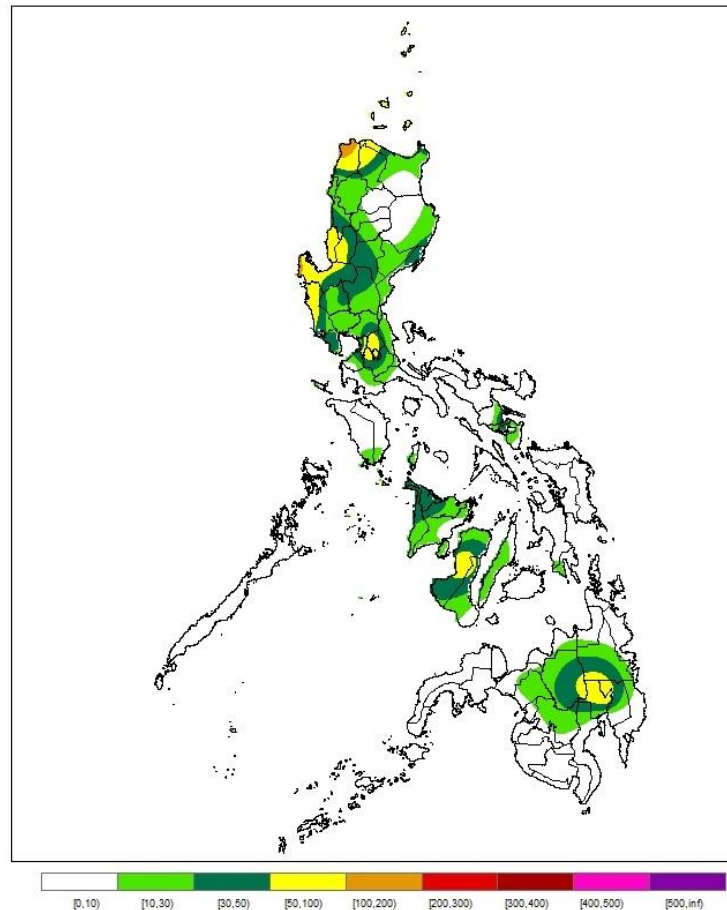


Fig. 2. Spatial interpolation of accumulated rainfall (mm) for the period of 30 August to 01 September 2022 from reports of PAGASA synoptic and agromet stations.

³ Over land extremes are extremes of observation reported by a land-based weather station.

Disclaimer: This summary is based on both warning-related information and near-real time post-analysis of the tropical cyclone in question. As such, the information provided herein are considered **preliminary only** and will be superseded by the information that will become available once the **Annual Report on Philippine Tropical Cyclones (2022 Edition)** is released.



Warning Summary

Number of Public and Marine Tropical Cyclone Products Issued:

- Tropical Cyclone Updates:
 - First Issuance: 4:00 PM, 30 August 2022
 - Last Issuance: 4:00 AM, 01 September 2022
- Tropical Cyclone Advisories:
 - First Issuance: None
 - Last Issuance: None
- Tropical Cyclone Bulletins:
 - First Issuance: 5:00 PM, 30 August 2022
 - Last Issuance: 11:00 AM, 01 September 2022
- Tropical Cyclone Warnings for Shipping:
 - First Issuance: 5:00 PM, 30 August 2022
 - Last Issuance: 11:00 AM, 01 September 2022

Hoisting of Tropical Cyclone Wind Signals: None

Other Pertinent Information:

Due to the sheer distance of GARDO from the landmass, the tropical depression did not directly affect the country. However, throughout the occurrence of GARDO, the Southwest Monsoon and the outer rainbands of HENRY brought rains over the Northern Luzon.

Prepared by:

S. F. Duran, R. P. Gile, and S. M. R. Reyes

Tropical Cyclone Group, Marine Meteorological Services Section
Weather Division, PAGASA

Disclaimer: This summary is based on both warning-related information and near-real time post-analysis of the tropical cyclone in question. As such, the information provided herein are considered **preliminary only** and will be superseded by the information that will become available once the **Annual Report on Philippine Tropical Cyclones (2022 Edition)** is released.

"The Weather and Climate Authority"