



TROPICAL CYCLONE PRELIMINARY SUMMARY Typhoon LUIS (2218 ROKE)

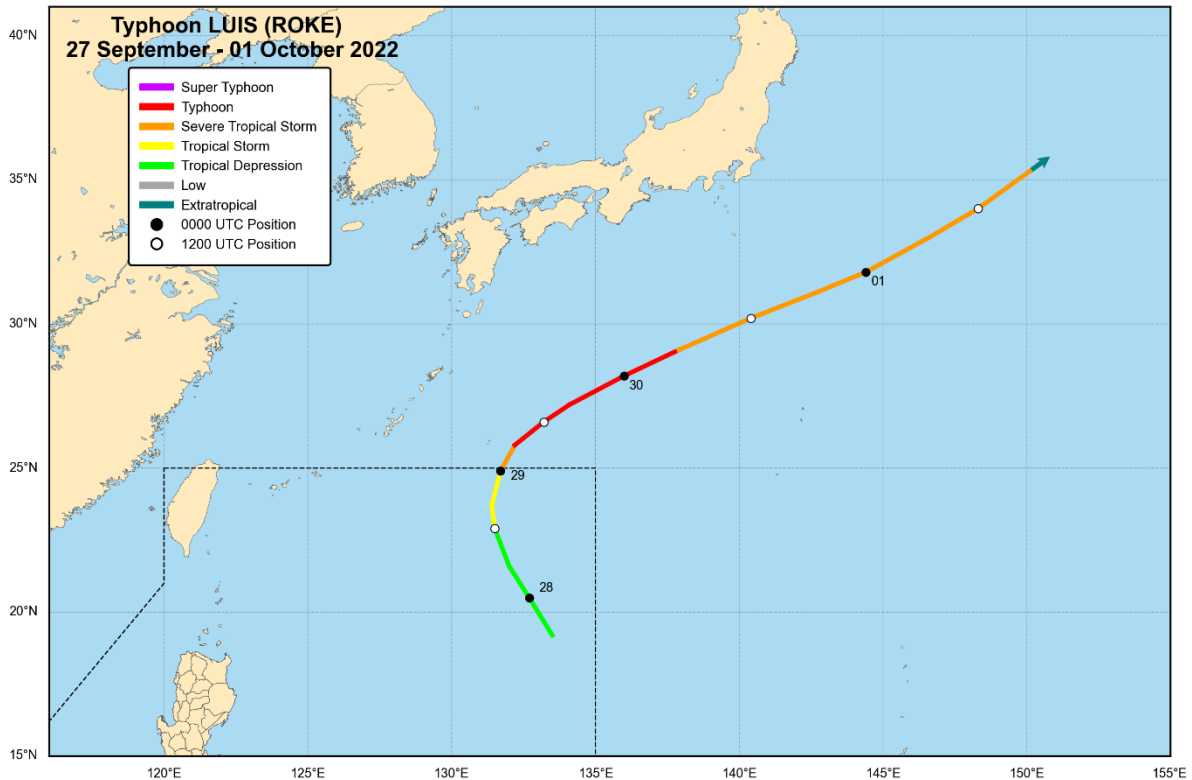


Fig. 1. Preliminary best track positions and intensities of Typhoon LUIS. Line color indicates the category of tropical cyclone. Shaded circles with date labels indicated 00 UTC positions while open circles indicate 12 UTC positions.

Meteorological Summary

- First tracked as a disturbance: 0000 UTC, 26 September 2022
- Developed into a tropical depression: 1800 UTC, 27 September 2022
- Weakened into an extratropical low: 1800 UTC, 01 October 2022
- Entered the Philippine Area of Responsibility: 1800 UTC, 27 September 2022
- Exited the PAR: 0100 UTC, 29 September 2022
- Duration
 - Within the PAR: 1 day and 7 hours
 - Lifetime¹: 4 days
- Peak intensity and category:
 - Within the PAR: 55 kt (100 km/h), Severe Tropical Storm
 - Lifetime: 75 kt (140 km/h), Typhoon
- Reported landfalls²: None

¹ Lifetime is the period from the development into a tropical depression to its weakening into a remnant low or its transitioning into an extratropical low.

² Reported landfalls in the Philippines

Disclaimer: This summary is based on both warning-related information and near-real time post-analysis of the tropical cyclone in question. As such, the information provided herein are considered **preliminary only** and will be superseded by the information that will become available once the **Annual Report on Philippine Tropical Cyclones (2022 Edition)** is released.

“The Weather and Climate Authority”



Extremes of Surface Meteorological Observations in the Philippines

Highest peak gust over land³: None

Lowest sea level pressure over land: None

Highest 24-hour rainfall:

- Tayabas, Quezon: 85.0 mm, 27 September 2022
- La Carlota, Negros Occidental: 71.6 mm, 29 September 2022
- Mactan International Airport, Cebu: 62.6 mm, 29 September 2022

Highest cumulative rainfall while the tropical cyclone was in the PAR:

- La Carlota, Negros Occidental: 110.9 mm
- Tayabas, Quezon: 91.1 mm
- Indang, Cavite: 87.6 mm

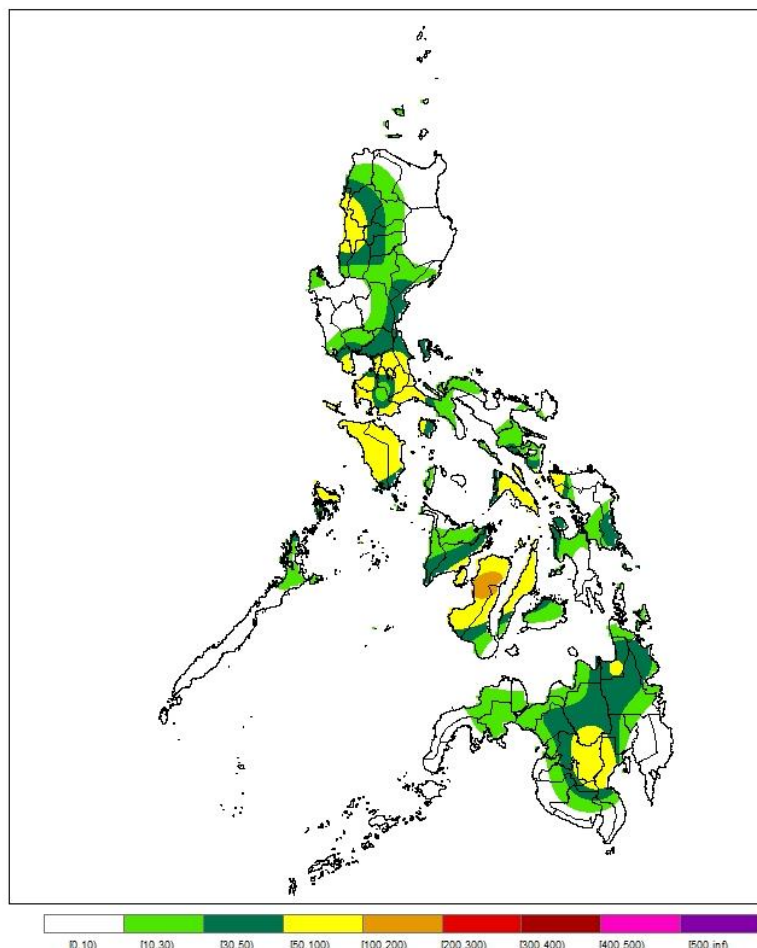


Fig. 2. Spatial interpolation of accumulated rainfall (mm) for the period of 27 to 29 September 2022 from reports of PAGASA synoptic and agromet stations.

³ Over land extremes are extremes of observation reported by a land-based weather station.

Disclaimer: This summary is based on both warning-related information and near-real time post-analysis of the tropical cyclone in question. As such, the information provided herein are considered **preliminary only** and will be superseded by the information that will become available once the **Annual Report on Philippine Tropical Cyclones (2022 Edition)** is released.



Warning Summary

Number of Public and Marine Tropical Cyclone Products Issued:

- Tropical Cyclone Updates:
 - First Issuance: 4:00 PM, 28 September 2022
 - Last Issuance: 4:00 PM, 29 September 2022
- Tropical Cyclone Advisories:
 - First Issuance: None
 - Last Issuance: None
- Tropical Cyclone Bulletins:
 - First Issuance: 11:00 AM, 28 September 2022
 - Last Issuance: 11:00 AM, 29 September 2022
- Tropical Cyclone Warnings for Shipping:
 - First Issuance: 11:00 AM, 28 September 2022
 - Last Issuance: 11:00 AM, 29 September 2022

Hoisting of Tropical Cyclone Wind Signals: None

Other Pertinent Information:

- The international name ROKE (meaning: Chamorro man's name) was contributed by the United States of America.
- Throughout the passage of LUIS in the Philippine Area of Responsibility, it did not directly affect any parts of the country.

Prepared by:

S. F. Duran, R. P. Gile, and S. M. R. Reyes

Tropical Cyclone Group, Marine Meteorological Services Section
Weather Division, PAGASA

Disclaimer: This summary is based on both warning-related information and near-real time post-analysis of the tropical cyclone in question. As such, the information provided herein are considered **preliminary only** and will be superseded by the information that will become available once the **Annual Report on Philippine Tropical Cyclones (2022 Edition)** is released.

"The Weather and Climate Authority"