



DOST-ICTO



DOST-ASTI

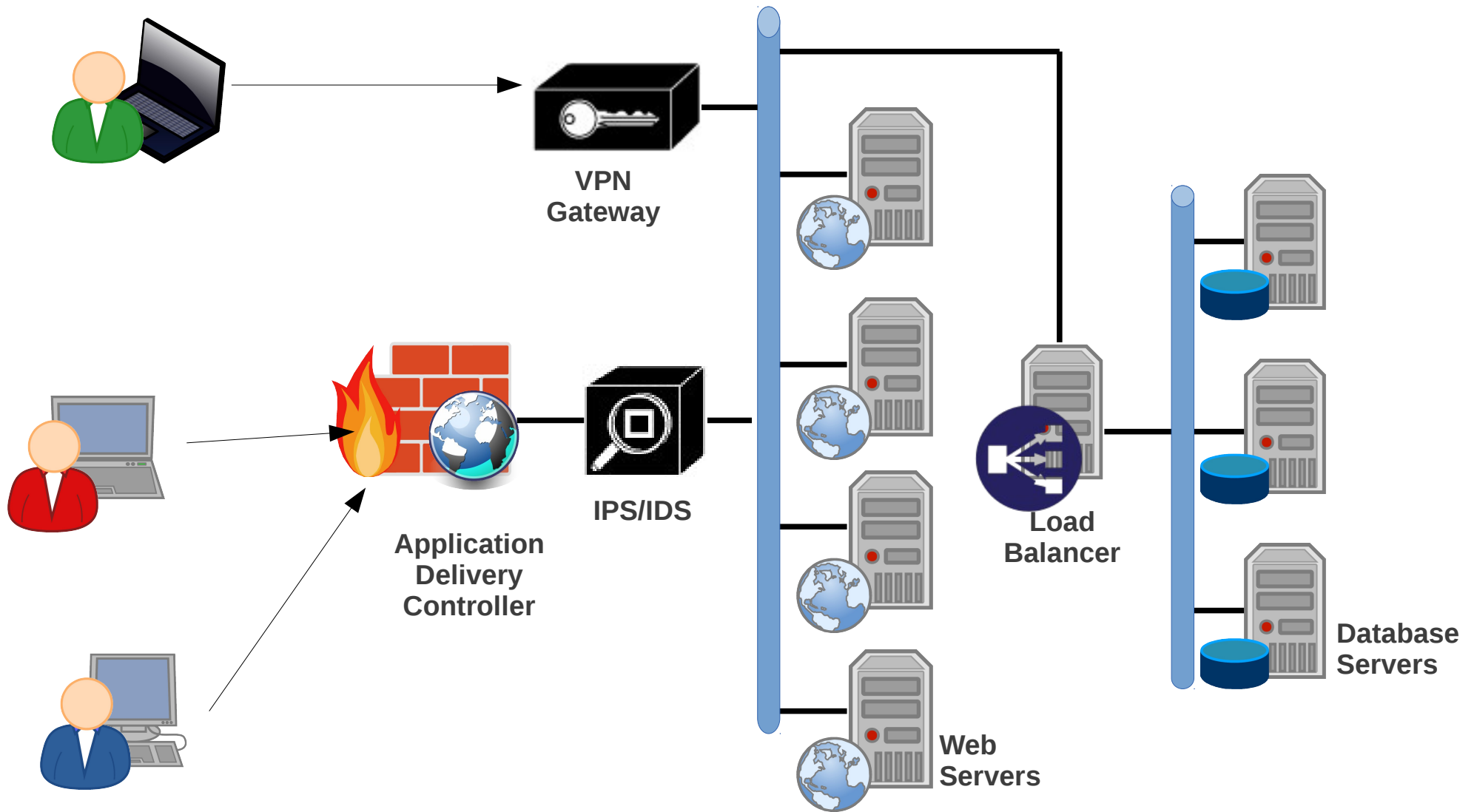


iGovPH WebHosting Services

Agenda

- Administrative Order 39, s 2013
- iGovPH Web Hosting Core Architecture
- Web Hosting Specifications
- Backup and Resiliency
- Incident Reporting and Help Desk
- UWCP
- Recommendations

Core Architecture



Web Hosting Services Components

- Application Delivery Controller
 - Provides the following functionalities:
 - Compression
 - Caching
 - Connection Pooling
 - Traffic Shaping
 - Web Application Firewall (also provides DDOS mitigation)
 - SSL offload
 - Content-based switching

Web Hosting Services Components

- Web Servers
 - LAMP Stack
 - Linux
 - Apache
 - PHP (5.3, 5.4, and 5.5)
 - MySQL 5.5
 - Isolated environment for each tenant
 - Resource limiting per tenant (resource spikes)
 - CPU
 - Memory
 - Storage
 - Provides an administration portal with facilities like PhpMyAdmin and File Uploader
 - Built-in antivirus scanner which scans uploaded files
 - Only UWCP certified CMS' are hosted on the shared platform
 - The shared platform is only applicable to Stage 1 and Stage 2 Websites as per UN-ASPA's Five Stages of e-Government

Web Hosting Services Components

- Database Servers
 - Still running on top of the iGovPH cloud. :)
 - Forked MySQL 5.5 variant (MariaDB)
 - Synchronous replication
 - Active-active multi-master topology
 - Read and write to any cluster node
 - True parallel replication, on row level
 - Direct client connections, native MySQL look & feel
 - Database instances of tenants can be administered through the administration portal

Web Hosting Services Components

- Intrusion Prevention System
 - Detects and prevents anomalous traffic up to the packet level
 - Correlates and analyzes network traffic to positively identify anomalous and malicious payloads
 - Sends alerts and notifications to the administrators in the event there are offending IP addresses sending these kind of traffic

Web Hosting Services Components

- Intrusion Prevention System
 - Detects and prevents anomalous traffic up to the packet level
 - Correlates and analyzes network traffic to positively identify anomalous and malicious payloads
 - Sends alerts and notifications to the administrators in the event there are offending IP addresses sending these kind of traffic

Web Hosting Services Components

- Load Balancer
 - Acts as a reverse proxy and distributes network or application traffic across a number of servers
 - Used to increase capacity (accommodating more concurrent connections)
 - ensures reliability and availability by monitoring the "health" of applications

Web Hosting Services Components

- VPN Gateway
 - Authorizes remote users to gain access to the back-end administrator portal of each website (/administrator/, /wp-admin/, and /user/)
 - This mitigates brute force attack logins to the back-end login portal and unauthorized access
 - Puts remote clients in a contained network

Web Hosting Specifications

- For the shared environment
 - 1 database per domain
 - 2 GB of storage capacity
 - Unlimited bandwidth transfers
- For the cloud/dedicated environment (per agency)
 - Ten (10) cores maximum (can be distributed to a number of VMs)
 - 40 GB RAM
 - 100 GB Storage Capacity
 - 1 Public IP and 1 Private /24 Network

Self Service Portal

- The iGovPH will require per agency to register at least three (3) technical contact persons that we will be issuing iGovPH user credentials to (possibly these should be the CIO/IT Manager, DevOps, and a content manager).
- The user credentials issued to these persons will be used to create the web/server space for the agency's website.

Backup and Resiliency

- The iGovPH web hosting server sits atop iGovPH's cloud infrastructure.
- The cloud infrastructure is equipped with redundant hardware components which should eliminate single-point-of-failure (SPOF) domains and ensure availability.
- We're running our backup processes daily to facilitate in recovering unexpected failures and interruption.
- We're in the course of drafting our business continuity plan and DR plan to identify and streamline recovery and restoration processes to our secondary data center
- The project will be operating two (2) data centers. Each having a cloud infrastructure. We can design your application to take advantage of these multi-site configuration. Same with our web hosting platform.

Issue Reporting and Help Desk

- Agencies can send their inquiries and report issues through our issue tracking system that will be available at:

<http://support.i.gov.ph/>

- This website shall enable users to create tickets according to what component they are inquiring about or have any issues with.
- This shall also have a live chat facility where users can easily talk with our support staff immediately.

UWCP

- We will be putting up a portal from where users can download pre-packaged CMS distributions with the UWCP template embedded:
 - Joomla
 - Wordpress
 - Drupal

Recommendations

- For websites that do not fall under Stage 1 and Stage 2, we can dedicate a separate server with application and database components.
- Better if you will talk to us and we'll find the best architecture for your existing/new web application.