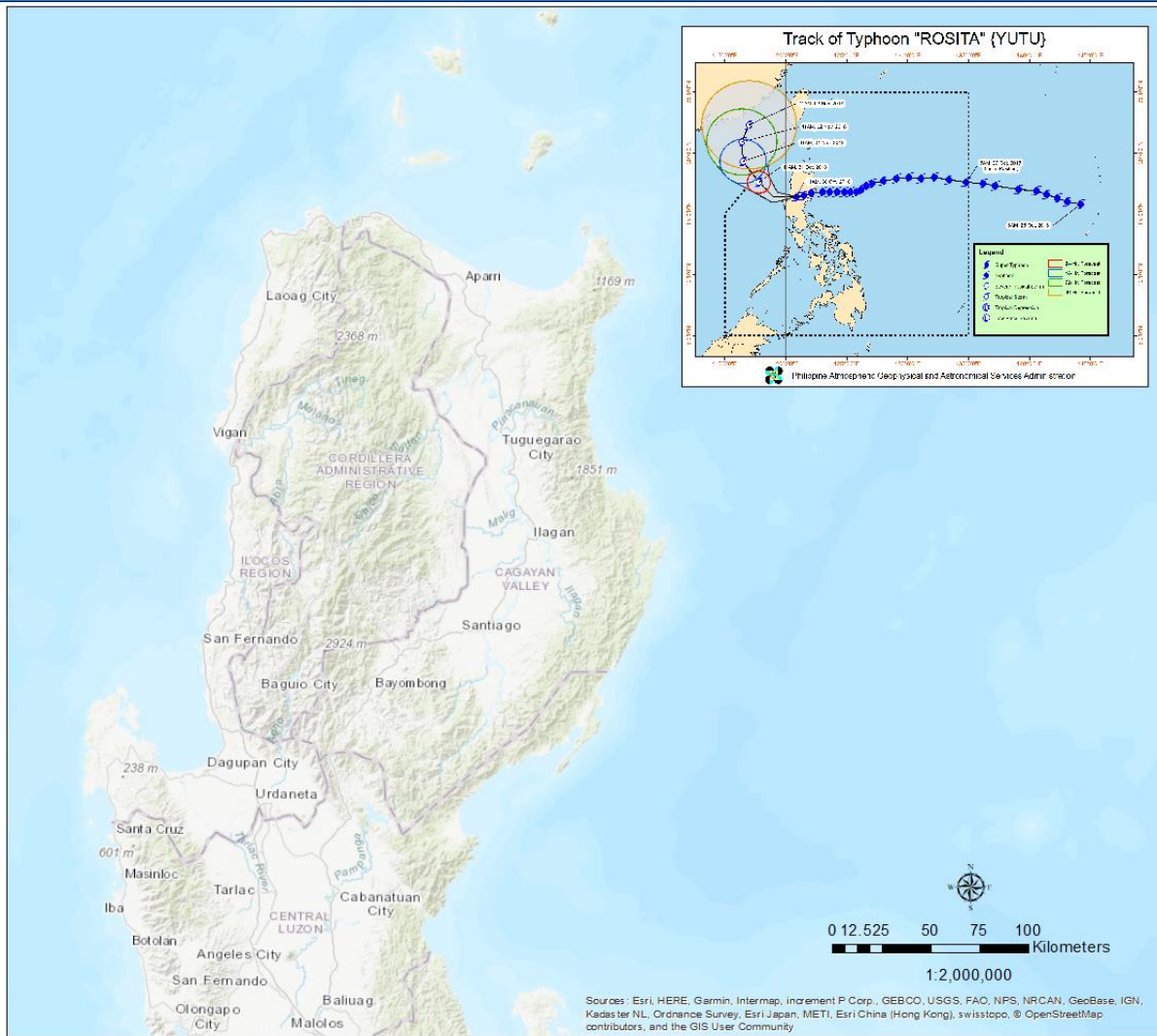


**Typhoon Rosita (Yutu)**  
**Storm Surge Warning #07**  
**24 Hour Forecast**

**Storm Surge Warning #07**

Philippine Atmospheric Geophysical  
and Astronomical Services  
Administration



**Typhoon Rosita**  
**08:00 PM, Tuesday**  
**October 30, 2018**

**Storm Surge Warning #07**  
**(FINAL)**

Storm surge heights have reached to insignificant level due to the weakening of the Typhoon. However, significant wind-driven waves can still affect low-lying coastal communities. Latest model output shows no serious threat on storm surge unless re-intensification occurs.

**Recommended Action**

The public are still advised to continue monitor for weather and storm surge updates from PAGASA particularly those provinces with Tropical Cyclone Warning Signals (TCWS).

Residents living in the low-lying coastal communities are still advised to stay away from the coast or beaches and cancel all marine activities.

Prepared by: MCCU / RF

Checked by: MCAM

*"tracking the sky... helping the country"*

Postal Address: P.O. Box 3278 Manila

Tel No. (63-2) 929-4865, 922-1992 (w/Fax) & 434-9040



REPUBLIC OF THE PHILIPPINES  
**Department of Science and Technology**  
**Philippine Atmospheric, Geophysical and**  
**Astronomical Services Administration (PAGASA)**  
Science Garden, Agham Road, Diliman, Quezon City 1100

*"tracking the sky... helping the country"*



Postal Address: P.O. Box 3278 Manila



Tel No. (63-2) 929-4865, 922-1992 (w/Fax) & 434-9040