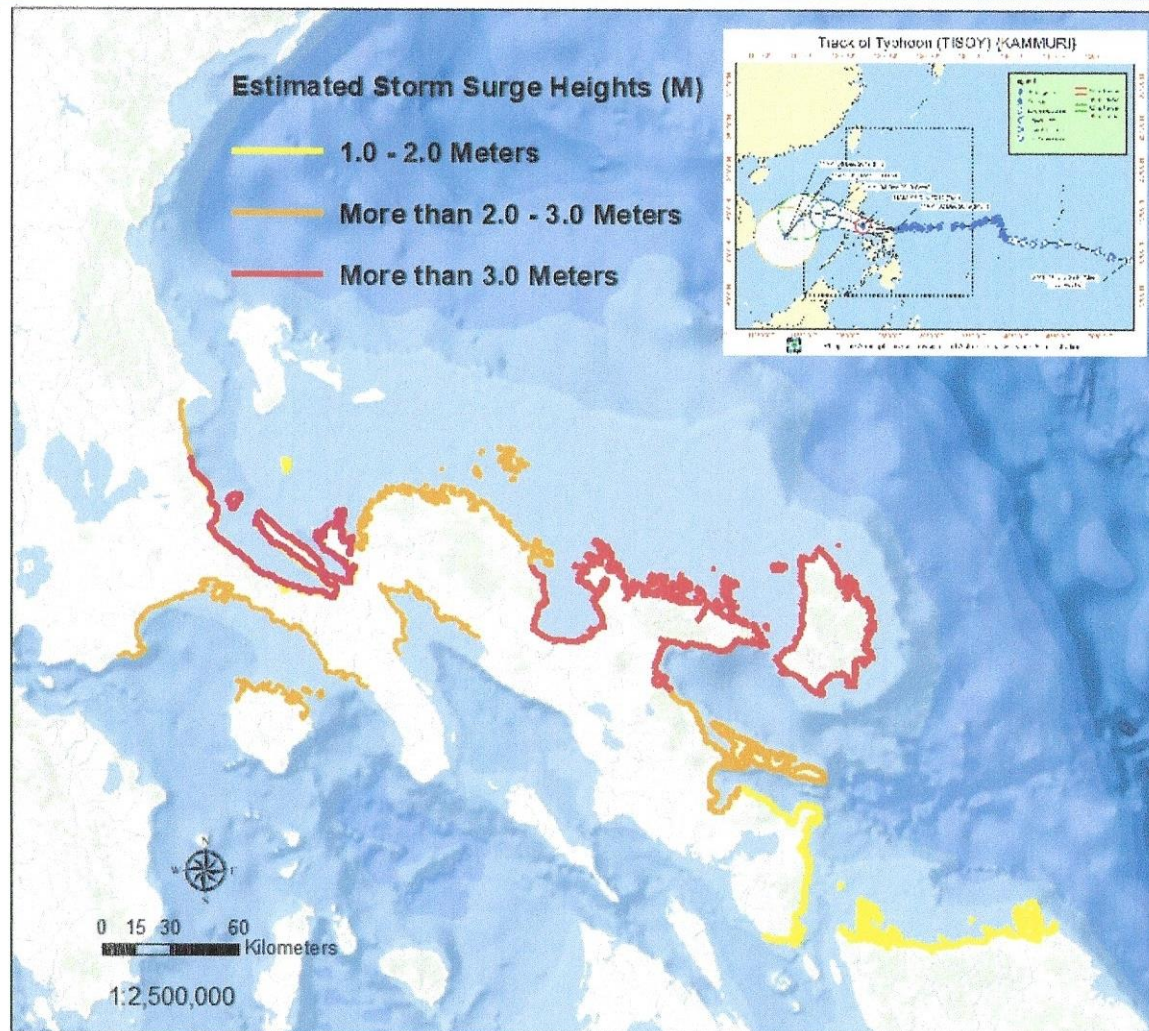


Typhoon Tisoy (Kammuri)
24 Hour Forecast

Storm Surge Warning #04

Philippine Atmospheric Geophysical
and Astronomical Services
Administration



Typhoon Tisoy
5:00 PM, Monday
December 2, 2019

Storm Surge Warning #04

Moderate to high risk of storm surge may occur in the next 24-hours. The possibility of life-threatening inundation from rising sea water along with high waves from the shoreline moving inland in the low lying coastal communities in the municipalities of:

Attached List

Recommended Action

Residents living in the low-lying coastal communities in the municipalities as mentioned in the list are advised to:

- > Stay away from the coast or beach;
- > Cancel all marine activities;
- > Evacuate to high areas or designated safe evacuation areas

NOTE: Inundation / flood depth due to storm surge depends on the topography of the area.



REPUBLIC OF THE PHILIPPINES
Department of Science and Technology
 Philippine Atmospheric, Geophysical and
 Astronomical Services Administration (PAGASA)
 Science Garden, Agham Road, Diliman, Quezon City 1100

STORM SURGE INFORMATION
STORM SURGE WARNING #04
FOR: TYPHOON "Tisoy" (KAMMURI)
Issued at 5PM, 02 December 2019
 (Valid until 5PM tomorrow)

SS Height	Provinces	Low Lying Coastal Areas in the Municipalities of:	IMPACTS	ADVICE/Actions to Take
More than 3 meters	Catanduanes	Pandan Bagamanoc Panganiban Viga Gigmoto Baras Bato Virac San Andres Caramoan Palumbanes Island	<ul style="list-style-type: none"> Storm Surge is catastrophic. Life-threatening and extensive inundation from rising sea water moving inland from the shoreline. Extreme damage to communities and coastal/marine infrastructures. River flooding is aggravated due to storm surge. 	<ul style="list-style-type: none"> Evacuation is enforced in low-lying coastal communities. All marine activities must be cancelled.
	Camarines Norte	Mercedes		
	Camarines Sur	Sipocot Cabusao Calabanga Tinambac Siruma Lagonoy Garchitorena Caramoan Presentacion San Jose Tigaon Sagnay		
	Quezon	Mauban Atimonan Plaridel Gumaca Lopez Alabat Island Calauag		

"Tracking the sky...helping the country"

Science Garden Compound, BIR Road, Brgy. Central, Quezon City,
 Metro Manila, Philippines 1100
 Postal Address: P.O. Box 3278 Manila

Tel. Nos. (02) 284-0800

Website: <http://bagong.pagasa.dost.gov.ph>



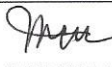

REPUBLIC OF THE PHILIPPINES
Department of Science and Technology
 Philippine Atmospheric, Geophysical and
 Astronomical Services Administration (PAGASA)
 Science Garden, Agham Road, Diliman, Quezon City 1100

more than 2 to 3 meters	Batangas	San Juan	<ul style="list-style-type: none"> • Severe damage to communities, coastal/marine infrastructures and disruptions to all marine-related activities. • Significant erosion to beaches. • Possible River flooding due to storm surge. 	<ul style="list-style-type: none"> • Evacuation is advised. • All marine activities should be cancelled. • Public is advised to follow the latest Tropical Cyclone Bulletins and Storm Surge Warnings from PAGASA.
	Quezon	Real Sariyaya Lucena Pagdilao Padre Burgos Agdangan Unisan Pitogo Macalelon General Luna Catanauan Buenvista Gunayangan Tagkawayan Calauag		
	Camarines Norte	Santa Elena Capalonga Jose Panganiban Paracale Vinzons Talisay Daet Basud		
	Camarines Sur	Del Gallego Ragay Lupi Sipocot		
	Albay	Tiwi Malinao Tabaco City Malilipot Bacacay Santo Domingo Legazpi City Manito Rapu-Rapu		
	Marinduque	Mogpog Santa Cruz		



REPUBLIC OF THE PHILIPPINES
Department of Science and Technology
 Philippine Atmospheric, Geophysical and
Astronomical Services Administration (PAGASA)
 Science Garden, Agham Road, Diliman, Quezon City 1100

1-2 meters	Sorsogon	Sorsogon City Prieto Diaz Gubat Barcelona Bulusan Santa Magdalena Matnog	<ul style="list-style-type: none"> • Moderate to significant damage to communities, coastal/ marine infrastructures and disruptions to all marine-related activities. • Evacuation is advised. • All marine activities should be cancelled. • Public is advised to follow the latest Tropical Cyclone Bulletins and Storm Surge Warnings from PAGASA.
	Albay	Manito	
	Northern Samar	Lavezares Biri Rosario San Jose Bobon Catarman Mondragon San Roque Pambujan Laoang Palapag	
<ul style="list-style-type: none"> • The public and the disaster risk reduction and management council concerned are advised to take appropriate actions and precautionary measures, and watch for the next storm surge information to be issued at 11PM tonight. • Inundation/flood depth due to storm surge will depend on the topography of the area(s). 			



 Prepared by: MCCU/VGCA/LJRR